

LENNOX[®]

INSTALLATION OPERATING & MAINTENANCE MANUAL



PROVIDING **GLOBAL SYSTEM** SOLUTIONS

**CLIMALINK
CLIMALOOK**

05-02

OPERATING INSTRUCTIONS

CLIMALOOK, CLIMALINK

CLIMALINK

This product consists of a central unit and a KP14 communication interface.

This unit is designed to be connected to a maximum of eight Climatic boards, reference

KP 01, installed in FLEXY or LINEA units.

A connection diagram is provided in the box.

The central unit must be installed in a dry, secured location.

Once the unit is connected and powered up, it is entirely automatic and does not require a screen, keyboard or mouse.

After a power failure, the central unit must be restarted using the on/off button.

To avoid this disadvantage, Lennox recommends that either the central unit should be connected to a pulsating current power outlet or a UPS should be installed.

LENNOX cannot be held liable in the event this recommendation is not acted upon.

CLIMALOOK

This product is identical to Climalink. It is equipped with a TFT screen, a mouse and a numeric keypad to have a local display of the installation.

ClimaLook uses the Internet Explorer interface for local operation. The local operating mode is completely automatic, and does not require configuration.

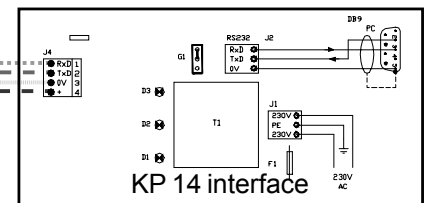
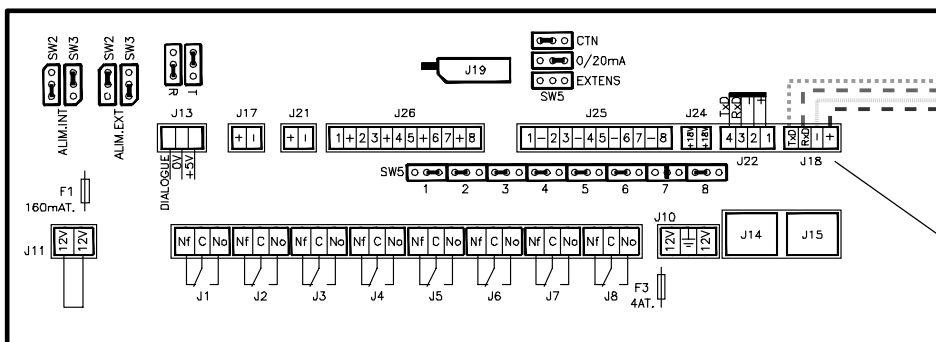
Like ClimaLink, ClimaLook can receive remote queries thanks to its internal modem and an analogue telephone line.

ClimaLook and ClimaLink do not work with an ISDN telephone line.

NOTE : LF20 only if a unit has an earlier version of s/w it must be upgraded to LF20.

PROCEDURE FOR CONNECTING THE CLIMATIC KP01 BOARD AND THE KP14 INTERFACE

KP 01 board



Led flashing during dialogue with the PC



NOTE : To function correctly each RTU requires an address to be set using a KP02 (setpoint 91). To register in the climatic the power to the climatic must be switched off **twice** after entering the value.

Whenever the power is switched on it is necessary to wait 5 minutes after the welcome page is displayed to allow the software to fully update.

It is possible to connect up to 8 Climatic boards in **parallel**. The cable used must be shielded and flexible, with external metal braiding. The cable must have two pairs, with a minimum area of 0.5 mm² and a maximum of 1 mm². The cable will be connected to each Climatic KP1 board on the **B PORT** keeping to the connection orders. After the procedures to start the PC, the LED next to the **B PORT**

on the Climatic KP1 board will start to flash. The PC queries the boards one after the other, and so it is normal for the LED to stop flashing occasionally.

After making all the connections, press the unit's on/off button. The programs are launched automatically, and the LED to the right of Com B on the Climatic should flash. Note the site's phone number in order to make the remote query.



KP 14 interface

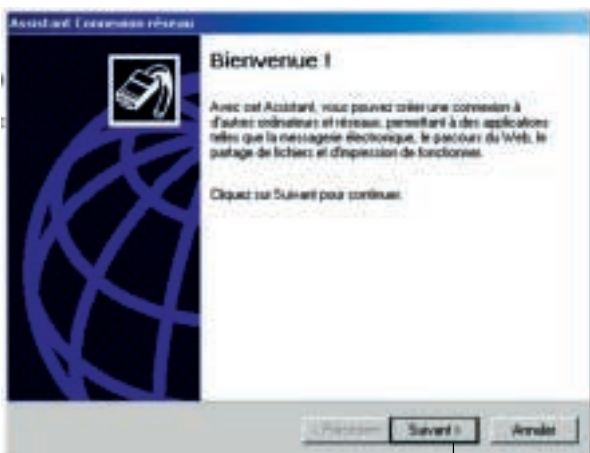
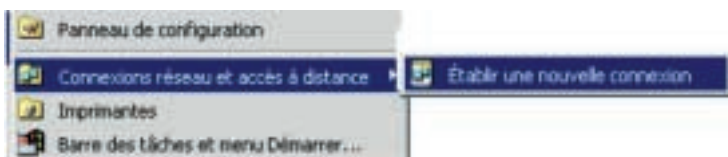
The cable coming from the KP14 interface with a DB9 socket at its termination will be connected to the computer's serial port.

Cable for the RJ11 telephone line supplied with the unit

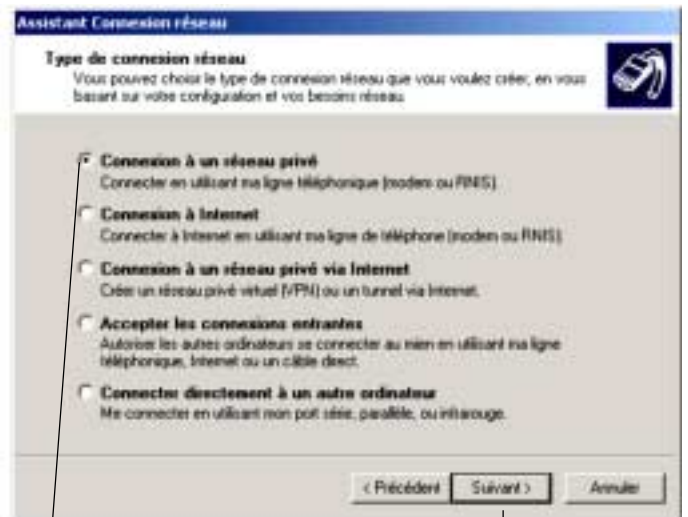


SETTINGS FOR THE CONNECTIONS

Depending on the version of Windows you are running, access the « Make new connection » function.

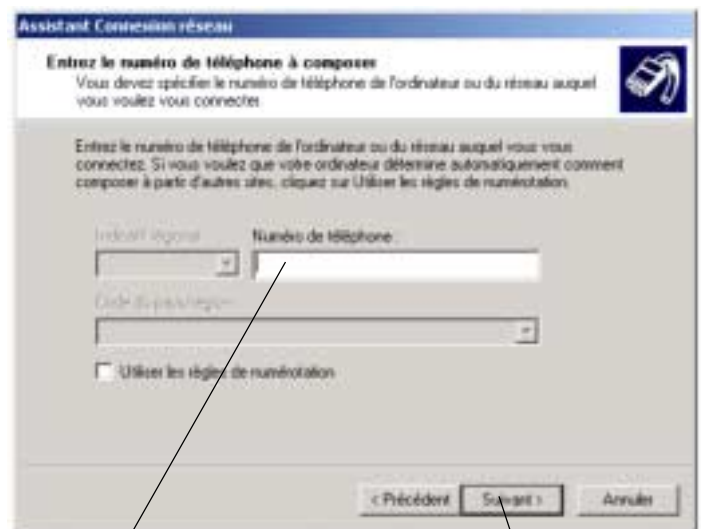


Click on next



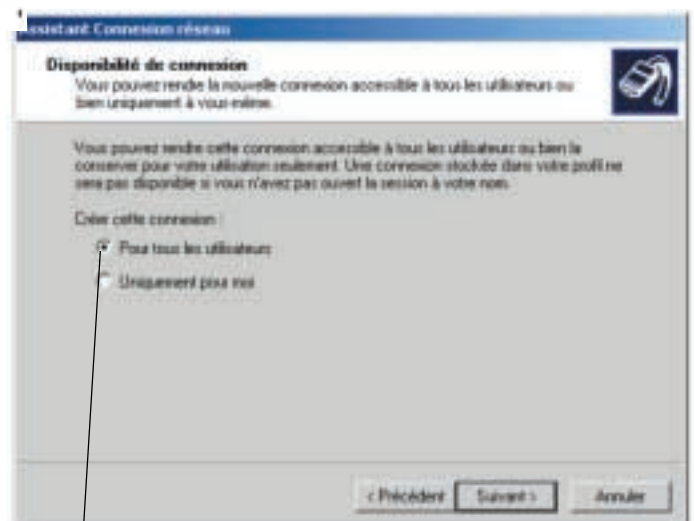
Click

Click on next

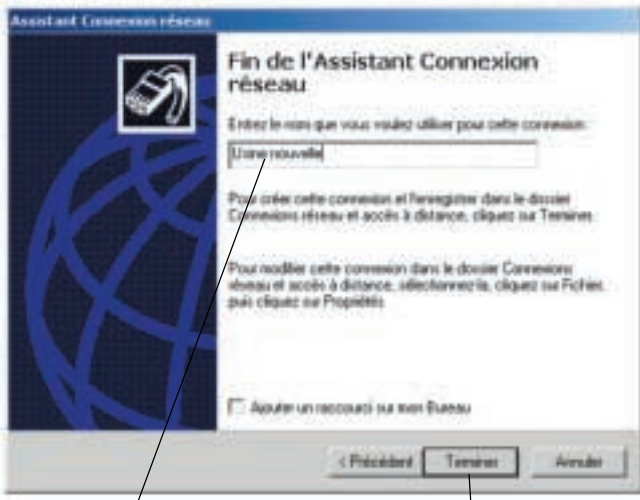


Enter the telephone number to which your ClimaLook's modem is connected.

Click



Click



Enter the site name

Click on Finish

Type "Administrateur"

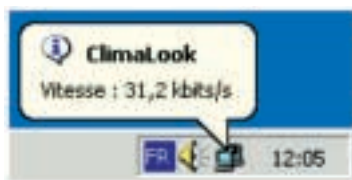


Click

Type "VISION"

The modem dials the number, and then the two modems hook up.

In the task bar next to the time display you should see the symbol indicating connection with the remote computer.



On some versions of Windows, a dialogue box may ask you to enter the password again. In this case:

- for User enter Administrateur
- for password enter VISION
- leave the workgroup field empty.

You can now start Internet Explorer.



Type "http:// Lennox" in the Address field

The first time you log in, Windows asks you to confirm your login identifiers:

- for User enter **Administrateur**
- for password enter **VISION**
- leave the workgroup field **empty**.

After this formality, you gain access to:

THE WELCOME PAGE

First of all you must lower the virtual keyboard window, before choosing the language.

NOTE : To operate the program it is necessary to minimise the virtual keyboard.

Then click on the flag corresponding to the language you want to use.



Enter your access code and confirm. The access code **999** serves as a temporary code until you have configured your own security code.

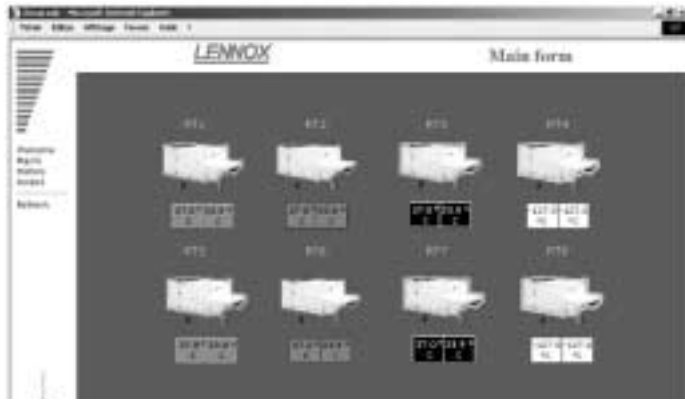
If your code is valid you will access the next menu. Otherwise you remain on the same page.

There are three access levels:

- 1st level: use of the User, Schedule, Macro and History pages.
- 2nd level: ditto, plus the Service page.
- 3rd level: ditto, plus the Access page.

If the local application is not functioning, it is possible you may remain on the same page, even if your access code is valid. In this case, it is necessary to first restart the local central unit before continuing.

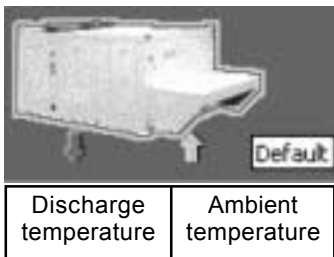
THE MAIN PAGE



The colour outline around the roof-top unit and the operating temperatures indicate the unit's status:

- Green: Operating mode,
- White: Stop mode,
- Orange: Night mode,
- Red: Fault mode,

This page gives you the basic information about how your installation functions. The roof-top unit's number corresponds to its EPROM number.



Position the mouse on one of the units to obtain information indicating this unit's status.

If the unit does not exist, is not powered up, or if communication with it is impossible, its icon disappears from the screen. The program attempts to communicate with absent units every ten minutes.

To access a unit's operating details, just click on it once. 20 seconds automatic refresh on this screen.

THE USER PAGE

This is the page used most frequently. It enables you to display and modify a number of settings on your unit.

Use the refresh function to update the values read.

Some settings are read-only, others can be modified. Read-only setting:



Modifiable setting:



Unit's day and time

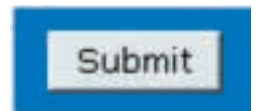


The bottom of the page displays the unit currently being queried, and can also be used to change the unit by clicking. This takes you to the user page for the new machine.

If the unit does not exist, is not powered up, or if communication with it is impossible, its icon disappears from the screen. The program attempts to communicate with absent units every ten minutes.

It is possible to modify several settings at the same time.

The settings will only be modified if the «submit» function is confirmed.



If your unit has - or had - a fault, it is outlined in red on the main page. You can use the fault module to trouble-shoot:

If the fault is still present, it is displayed here:



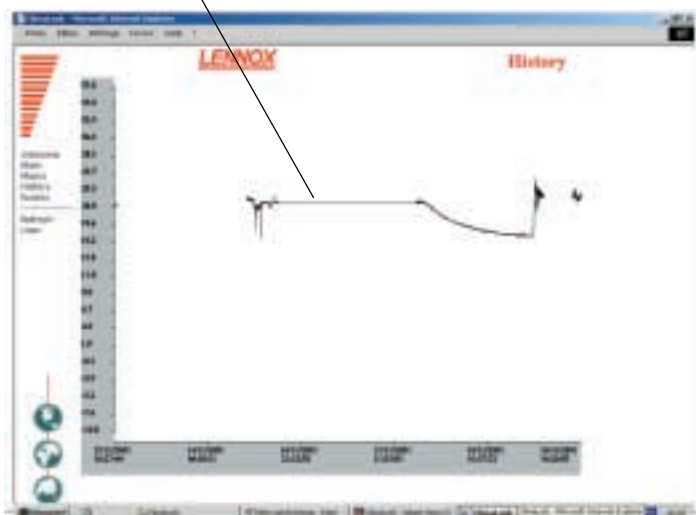
The fault reset function is used to clear the unit's errors if this is possible. If the error persists, the fault returns.

The clear default function is used to reset the software memory of defaults. It does not erase the unit's faults.

For some settings, a small icon is displayed at the end of the line
Click on it to get a history of this setting.



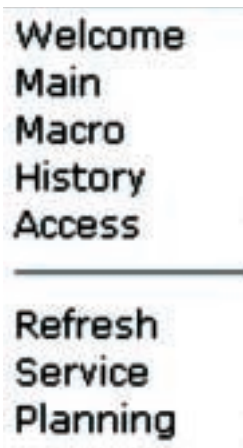
The empty fields correspond to occasions when the CLIMALOOK / CLIMALINK unit has stopped



+ Supply temperature / Room temperature / Outdoor air temperature + Faults (last 10 days)

The menus

- Welcome page
- Main page
- Macro page
- General History page
- Access codes page



To refresh the values
Service page or experienced user
Schedule page which shows all the set points for the different modes.

THE SERVICE PAGE

The Service page is for technical users who know exactly how to adjust air-conditioning units. It is protected by a second level password.

The units are presented in groups, and it is possible to display and modify several settings, as in the User page.
The settings will only be modified if the «submit» function is confirmed.

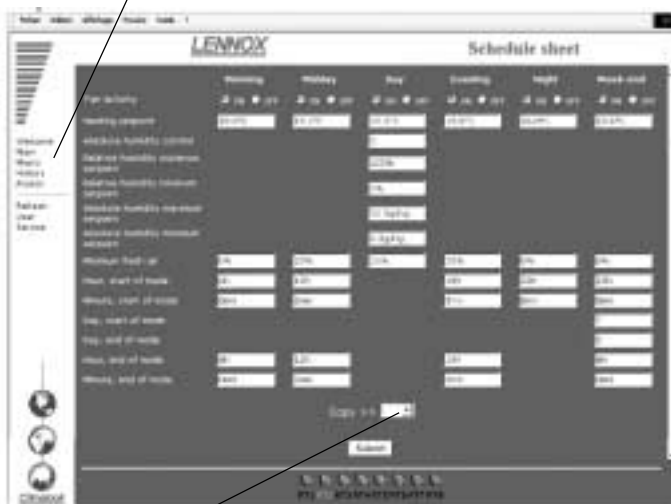
Use the refresh function to update the values read



- To access the Service page for another unit, simply click on this unit.
- To return to the User page, click on the User menu.
- To access the Schedule page, click on the Schedule menu.

THE SCHEDULE PAGE

This page is used to display and modify all the configuration settings for each zone of a unit's operating schedule.
Use the refresh function to update the values read.



In addition it is possible to copy all the displayed settings and then paste them in another unit you have chosen.

The settings will only be modified if the «submit» function is confirmed.

THE MACRO PAGE

This page enables you to modify all the units on your site in one action.

You can choose to perform one or more actions.

Modify the value or values you want to submit.



Click on "Submit"

Select "Entire site"

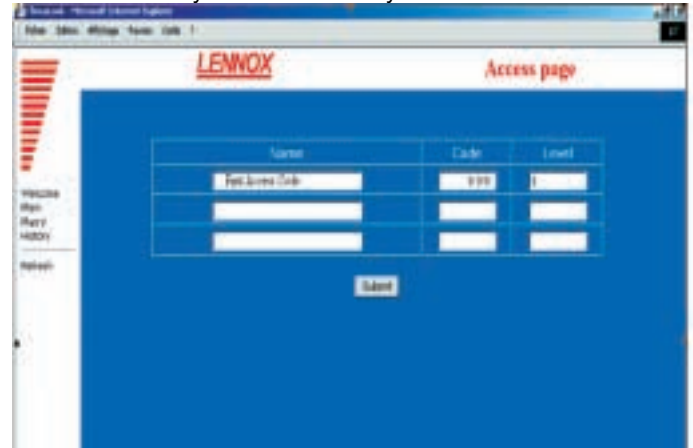
The standard Macros are:

- Adjust the Comfort thermostat
- Set to Night mode
- Set fresh air to the minimum
- Set the time on the Climatic boards.

THE ACCESS PAGE

This page enables users who have a third level access code to attribute access codes to other users.

The access code 999 is your first access code. Remember to delete it once you have created your own access codes.



To create a new user:

Click on name

THE HISTORY PAGE

This page is provided in addition to the individual history you've already seen in the User page. It tells you when local communication starts and stops, and gives you the users' access codes.



Use the virtual keyboard on the task bar

Use the keyboard to enter the name, password (maximum of 4 digits) and the access level.

1 = use of the User, Schedule, Macro and History pages.

2 = same level, plus the Service page.

3 = same level, plus the Access page.

This is a read-only page. The history is automatically cleared to ensure refreshment doesn't take too long.

This page will also show units faults.

Reposition the keyboard in the task bar by clicking on the minus sign in the top right-hand part of the keyboard.



Confirm by clicking on «Submit»

PROBLEM SOLVING

Impossible to enter your access code, you remain on the welcome page.

Local communication has been interrupted. You must restart the local unit.

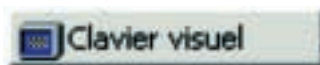
After restarting, you must wait for 5 to 10 minutes until the unit is ready to be queried once more.

The values read do not seem to move.

The values are not in fact refreshed automatically, and for all the pages you must use the Refresh function to be sure you are reading the latest values.

The keyboard has disappeared from the task bar.

Click on Start / Programs / StartUp



The local unit is not answering the phone

The local unit is - or was - powered down, and you must press the On/off button. See recommendations at the beginning of the document.

The unit is not connected to a direct analogue phone line.

How to check the ClimaLink is functioning correctly after installation:

Connect up the unit and the KP14

Connect the cables to the J18 inputs on the Climatic boards. After a few minutes, the central unit should start its dialogue. The LED on the Climatic board to the right of the J18 input should flash.

If this does not happen, check the wiring.

The only way to examine the problem in more detail is to obtain a monitor and a mouse and contact the Lennox services.

After installing a ClimaLook or ClimaLink central unit, it is vital to perform the telephone communication tests.

Take a test telephone set and make sure you have a connection.

Note the telephone number to which the central unit is connected.

Connect the central unit and ask a person on the remote site to test communication.

Obviously the central unit must be the only device installed on the phone line. It cannot share the line with a fax or another modem.

**GREAT BRITAIN ,
IRELAND :**

LENNOX INDUSTRIES LTD
tél. : + 44 1604 599400
fax : + 44 1604 594200
e-mail : ukmarketing@lennoxind.com

BELGIUM :

LENNOX BENELUX N.V./S.A.
tel. : + 32 3 633 30 45
fax : + 32 3 633 00 89
e-mail : info.be@lennoxbenelux.com

CZECH REPUBLIC :

LENNOX JANKA
tel. : + 420 2 510 88 111
fax : + 420 2 579 10 393
e-mail : janka@janka.cz

FRANCE :

LENNOX FRANCE
tel. : + 33 4 72 23 20 20
fax : + 33 4 78 20 07 76
e-mail : accueil@lennoxfrance.com

GERMANY :

LENNOX DEUTSCHLAND GmbH
tel. : + 49 69 42 09 79 0
fax : + 49 69 42 09 79 40
e-mail : info.de@lennoxdeutschland.com

NETHERLANDS :

LENNOX BENELUX B.V.
tel. : + 31 33 2471 800
fax : + 31 33 2459 220
e-mail : info@lennoxbenelux.com

POLAND :

LENNOX POLSKA Sp. z o. o.
tel. : + 48 22 832 26 61
fax : + 48 22 832 26 62
e-mail : lennoxpolska@inetia.pl

PORTUGAL :

LENNOX CLIMATIZAÇÃO LDA.
tel. : +351 22 999 84 60
fax : +351 22 999 84 68
e-mail : info@lennoxportugal.com

RUSSIA :

LENNOX DISTRIBUTION MOSCOW
tel. : + 7 095 246 07 46
fax : + 7 502 933 29 55
e-mail : lennox.dist.moscow@mtu-net.ru

SLOVAKIA :

LENNOX SLOVAKIA
tel. : + 421 7 44 87 19 27
fax : + 421 7 44 88 64 72

SPAIN :

LENNOX REFAC S.A.
tel. : + 34 902 400 405
fax : + 34 91 542 84 04
e-mail : marketing@lennox-refac.com

UKRAINE :

LENNOX DISTRIBUTION KIEV
tel. : + 380 44 213 14 21
fax : + 380 44 213 14 21
e-mail : jankauk@uct.kiev.ua

**OTHER EUROPEAN COUNTRIES,
AFRICA,
MIDDLE-EAST :**

LENNOX DISTRIBUTION
tel. : + 33 4 72 23 20 14
fax : + 33 4 72 23 20 28
e-mail : marketing@lennoxdist.com

LENNOX®