

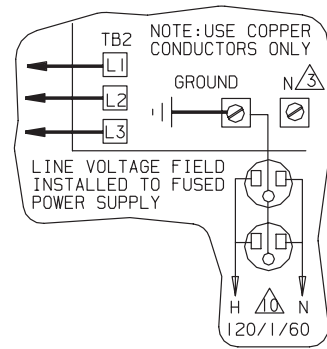
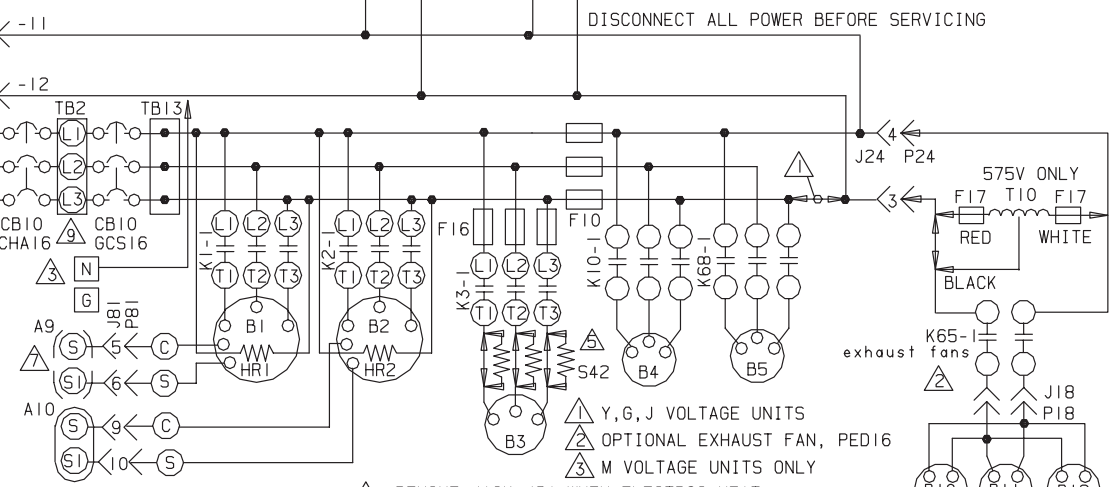
LETTER DESIGNATION	VOLTAGE
Y	208-230/60/3
G	460/60/3
J	575/60/3
M	380-420/50/3

KEY	DESCRIPTION
K3,-1	CONTACTOR-BLOWER
K10,-1	CONTACTOR-COND FAN 1
K28,-1	RELAY-CURRENT SENSING KIT(OPT)
K29,-1	RELAY-NO HEAT KIT (OPTIONAL)
K46,-1	RELAY-BLOWER
K49,-1	RELAY-HEAT 2
K65,-1	RELAY-EXHAUST FAN
K66,-1	RELAY-STAGE 1, COOL
K67,-1	RELAY-STAGE 2, COOL
K68,-1	CONTACTOR-COND FAN 2
K77,-1	RELAY-HEAT 1
K127,-1,2	RELAY-COND FAN START
K128,-1,2	RELAY-LOW AMBIENT BYPASS
P2	PLUG-HEAT
P18	PLUG-PED16 (OPTIONAL)
P24	PLUG-EXHAUST FAN, PED (OPT)
P25	PLUG-SPII (OPTIONAL)
P34	PLUG-3 STAGE (OPTIONAL)

ADJUSTABLE HEAT ANTICIPATION TB17
 1ST STAGE HEAT 0.1 AMP
 2ND STAGE HEAT 0.4 AMP
 DISCONNECT ALL POWER BEFORE SERVICING

KEY	DESCRIPTION
A9	PROTECTOR-COMPRESSOR 1
A10	PROTECTOR-COMPRESSOR 2
A11	PANEL-RELAY (SEE NOTE 6)
B1	COMPRESSOR 1
B2	COMPRESSOR 2
B3	MOTOR-BLOWER
B4	MOTOR-COND FAN 1
B5	MOTOR-COND FAN 2
B10	MOTOR-EXHAUST FAN 1
B11	MOTOR-EXHAUST FAN 2
B12	MOTOR-EXHAUST FAN 3
C6	CAPACITOR-EXHAUST FAN 1
C8	CAPACITOR-EXHAUST FAN 2
C9	CAPACITOR-EXHAUST FAN 3
CB10	CIRCUIT BREAKER-DISCONN
DL6	DELAY-READOUT KIT(OPT)
F1	FUSE-TRANSFORMER T1
F10	FUSE OUTDOOR FAN MOTOR
F16	FUSE-BLOWER MOTOR, FANS
F17	FUSE-TRANSFORMER T10
F18	FUSE-TRANSFORMER T18
HR1	HEATER-COMPRESSOR 1
HR2	HEATER-COMPRESSOR 2
J18	JACK-PED16
J24	JACK-EXHAUST FAN, PED16
J25	JACK-SPII
J33	JACK
J36	JACK-TEST, COOL
J57	JACK-FILTER SWITCH
J81	JACK-MOTOR PROTECTOR
K1,-1	CONTACTOR-COMPRESSOR 1
K2,-1,2	CONTACTOR-COMPRESSOR 2

KEY	DESCRIPTION
P36	PLUG-TEST, COOL
P57	PLUG-FILTER SWITCH (OPTIONAL)
P66	PLUG-NOVAR ETM
P81	PLUG-MOTOR PROTECTOR
S3	SWITCH-LIMIT, LOW COMP 1 /COMPRESSOR MONITOR
S4	SWITCH-LIMIT, HI PRESS COMP 1
S7	SWITCH-LIMIT, HI PRESS COMP 2
S11	SWITCH-LOW PRESS, LOW AMB KIT
S24	SWITCH-LOSS OF CHARGE COMP 1
S25	SWITCH-LOSS OF CHARGE COMP 2
S27	SWITCH-FILTER (OPTIONAL)
S39	SWITCH-EXHAUST FAN, MERCURY
S41	THERMOSTAT-LOW AMBIENT KIT
S42	SWITCH-OVERLOAD RELAY
S49	SWITCH-FREEZESTAT COMP 1
S50	SWITCH-FREEZESTAT COMP 2
S74	SWITCH-FIRESTAT 1
S75	SWITCH-FIRESTAT 2
S84	SWITCH-LOW PRESS, LOW AMB KIT, COMP 2
T1	TRANSFORMER-CONTROL
T10	TRANSFORMER-EXHAUST FAN
T18	TRANSFORMER-CONTACTOR
TB2	TERMINAL STRIP-UNIT
TB12	TERMINAL STRIP-SPII(OPTIONAL)
TB13	TERMINAL STRIP-POWER DISTB
TB17	TERMINAL STRIP-MULTI COLOR
TB29	TERMINAL STRIP-24VAC POWER
TB30	TERMINAL STRIP-24VAC COMMON
W3	CONTROL-TEMPERATURE (OPTIONAL)



- ▲ REMOVE JACK J34 WHEN ELECTRIC HEAT IS USED (CHA UNITS ONLY)
 - ▲ Y, G, J 7.5 & 10 HP MOTORS ONLY; M ALL MOTORS
 - ▲ CONNECTIONS FOR REMOTE MOUNTED SMOKE DETECTOR A17, MAX LOAD 0.1VA 24VAC CLASS II
 - ▲ A9, A10, J81 & P81 USED ON -3J UNITS ONLY
 - ▲ LOW AMBIENT KIT USING S11 & S84 SWITCHES ON BOTH COMPRESSORS
 - ▲ CIRCUIT BREAKERS ARE OPTIONAL
 - ▲ OPTIONAL
- IF ANY WIRE IN THIS APPLIANCE IS REPLACED, IT MUST BE REPLACED WITH WIRE OF LIKE SIZE, RATING AND INSULATION THICKNESS.
- REFER TO UNIT RATING PLATE FOR MINIMUM CIRCUIT AMPACITY AND MAXIMUM OVERCURRENT PROTECTION SIZE
- WARNING-ELECTRIC SHOCK HAZARD, CAN CAUSE INJURY OR DEATH. UNIT MUST BE GROUNDED IN ACCORDANCE WITH NATIONAL AND LOCAL CODES

LENNOX Industries Inc. WIRING DIAGRAM 1/95
 COMBINATION-PACKAGED/ROOFTOP
 GCS16, CHA16-2553, 2753-3, 4-Y, G, J, M
 CHA16-3003-3-Y, G, J, M
 GCS16-3003-3-Y, G, J
 (WITH SPII INTERFACE)
 COOLING SECTION-B41
 Supersedes Form No. 529, 907W
 New Form No. 531, 311W
 © 1995 Lennox Industries Inc. Litho U.S.A.