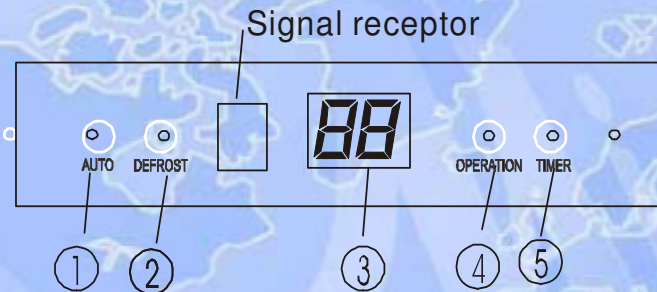


# Troubleshooting

## 1. Display board



① **AUTO indicator**

This indicator illuminates when the air conditioner is in AUTO operation.

② **DEFROST indicator (For Cooling & Heating models only)**

This indicator illuminates when the air conditioner starts defrosting automatically or when the warm air control feature is activated in heating operation.

③ **TEMPERATURE indicator**

Displays the temperature settings when the air conditioner is operational.

④ **OPERATION indicator**

This indicator flashes after power is on and illuminates when the unit is in operation.

⑤ **TIMER indicator**

This indicator illuminates when TIMER is set ON/OFF.

# Troubleshooting

## 1. Indoor unit

Operation	Timer	De-frost	Alarm	State
<input type="checkbox"/>	X	X	X	Indoor room temp. sensor open or short-circuit
X	X	<input type="checkbox"/>	X	Indoor pipe temp. sensor open or short-circuit
X	<input type="checkbox"/>	X	X	Indoor and outdoor communication error
X	X	X	<input type="checkbox"/>	Water level alarm
<input type="checkbox"/>	<input type="checkbox"/>	X	X	EEPROM error
<input type="checkbox"/>	X	X	●	Inverter module protection
<input type="checkbox"/>	●	X	X	Outdoor sensor open or short circuit
<input type="checkbox"/>	●	X	●	Outdoor voltage protection
<input type="checkbox"/>	X	●	X	Compressor top temp. protection
<input type="checkbox"/>	X	●	●	Mode conflict
<input type="checkbox"/>	X	<input type="checkbox"/>	<input type="checkbox"/>	Outdoor current protection

# Troubleshooting

## 2. Troubleshooting for outdoor unit

Display	LED STATUS
E0	EEPROM error
E1	No 1 Indoor units pipe temp. sensor or connector of pipe temp. sensor is defective
E2	No 2 Indoor units pipe temp. sensor or connector of pipe temp. sensor is defective
E3	No 3 Indoor units pipe temp. sensor or connector of pipe temp. sensor is defective
E4	Outdoor units temp. sensor or connector of temp. sensor is defective
E5	Compressor voltage protection
E7	Indoor and outdoor communication error
P0	Compressor top protection against temperature
P3	Compressor current protection
P4	Inverter module protection
P5	Outdoor low temp. protection
P6	Condenser high-temperature protection

# Troubleshooting

## Solution

Display	LED STATUS
E0	EEPROM error

Temporarily turn off the power supply and turn it on again after 1 minutes

Does the trouble occur again?

Yes

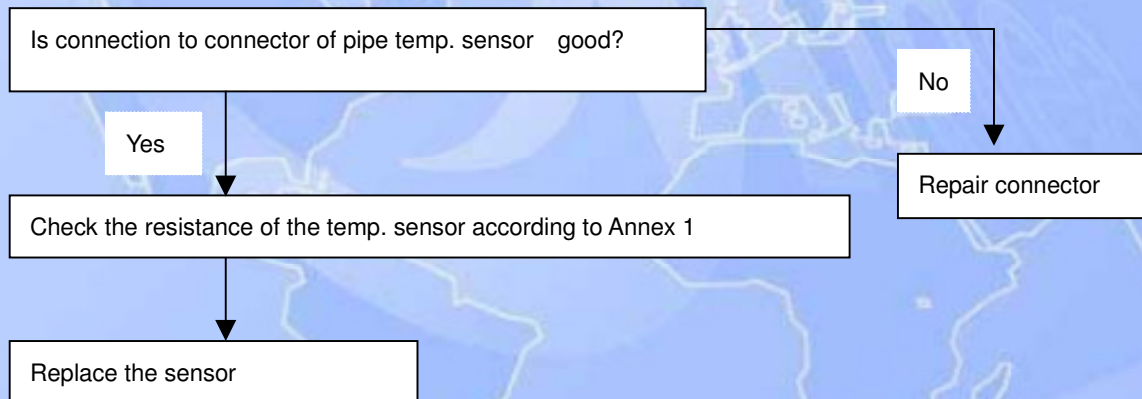
Replace the indoor PCB



# Troubleshooting

## Solution

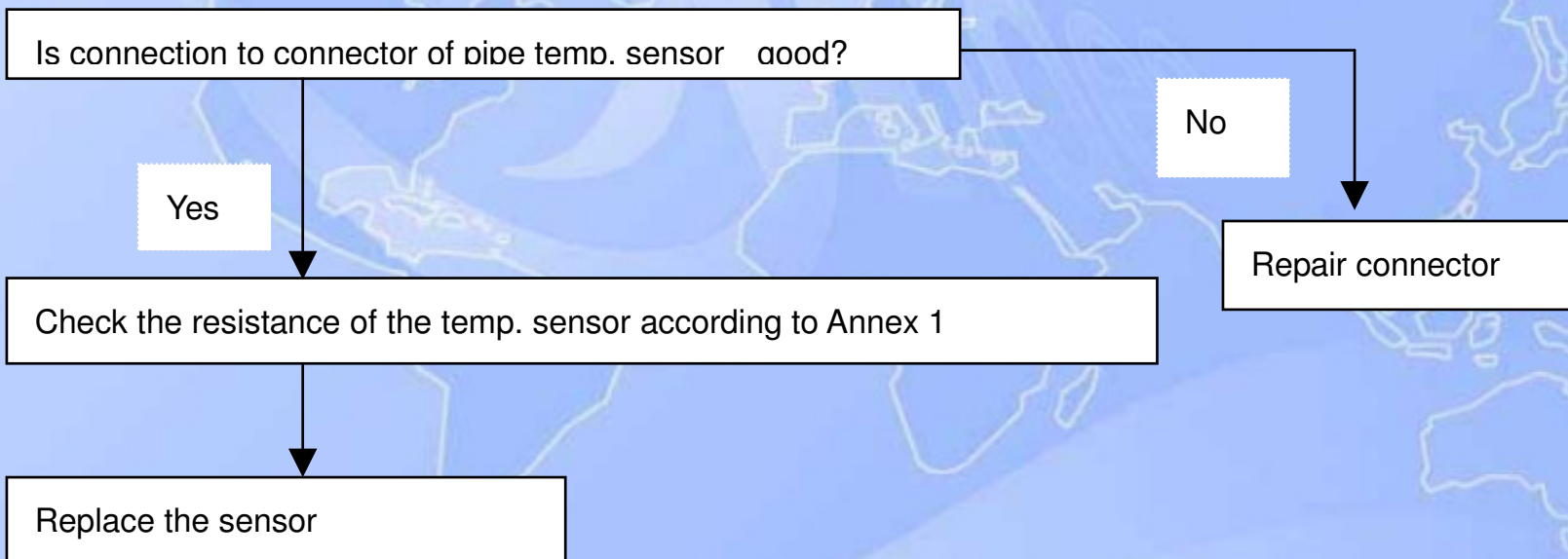
Display	LED STATUS
E1	No 1 Indoor units pipe temp. sensor or connector of pipe temp. sensor is defective



# Troubleshooting

## Solution

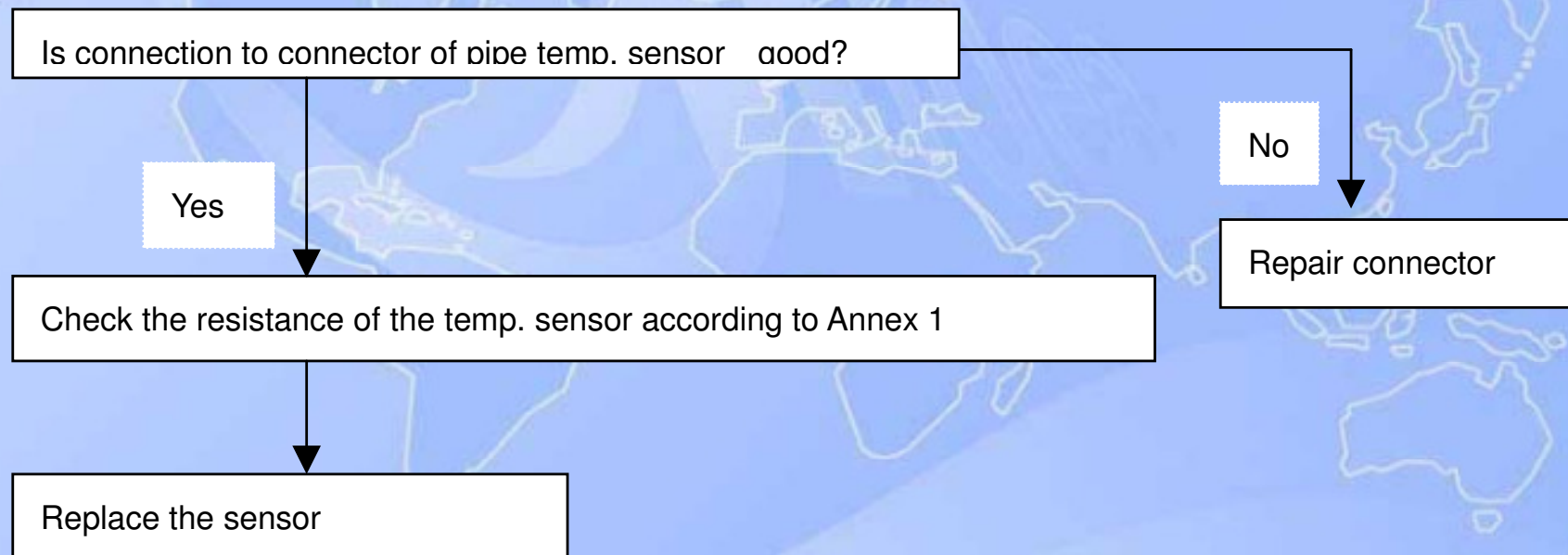
Display	LED STATUS
E2	No 2 Indoor units pipe temp. sensor or connector of pipe temp. sensor is defective



# Troubleshooting

## Solution

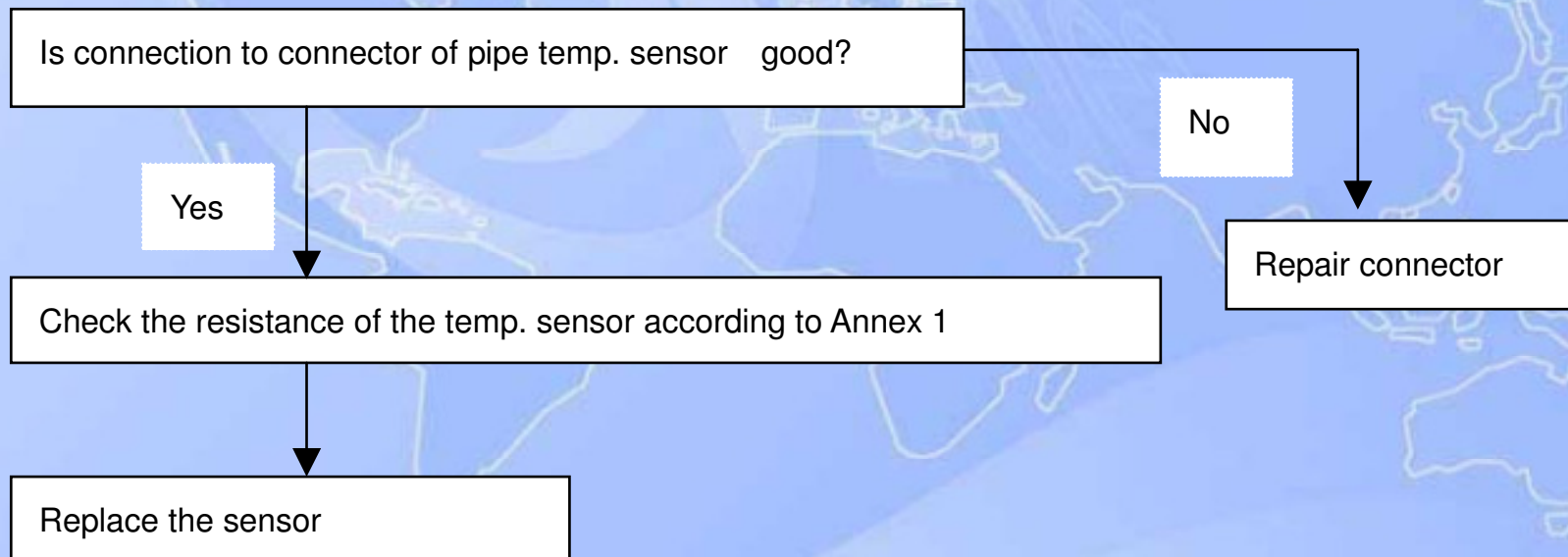
Display	LED STATUS
E3	No 3 Indoor units pipe temp. sensor or connector of pipe temp. sensor is defective



# Troubleshooting

## Solution

Display	LED STATUS
E4	Outdoor units temp. sensor or connector of temp. sensor is defective





# Troubleshooting

## Solution

Display	LED STATUS
E5	Compressor voltage protection

Check the voltage of power supply, if the voltage is about 220V, turn off the power supply to indoor unit and turn it on again after 1 minute

Does the trouble occur again?

Yes

Check the voltage of secondary of T3 transformer in outdoor power board, is this voltage 12-14V(AC)

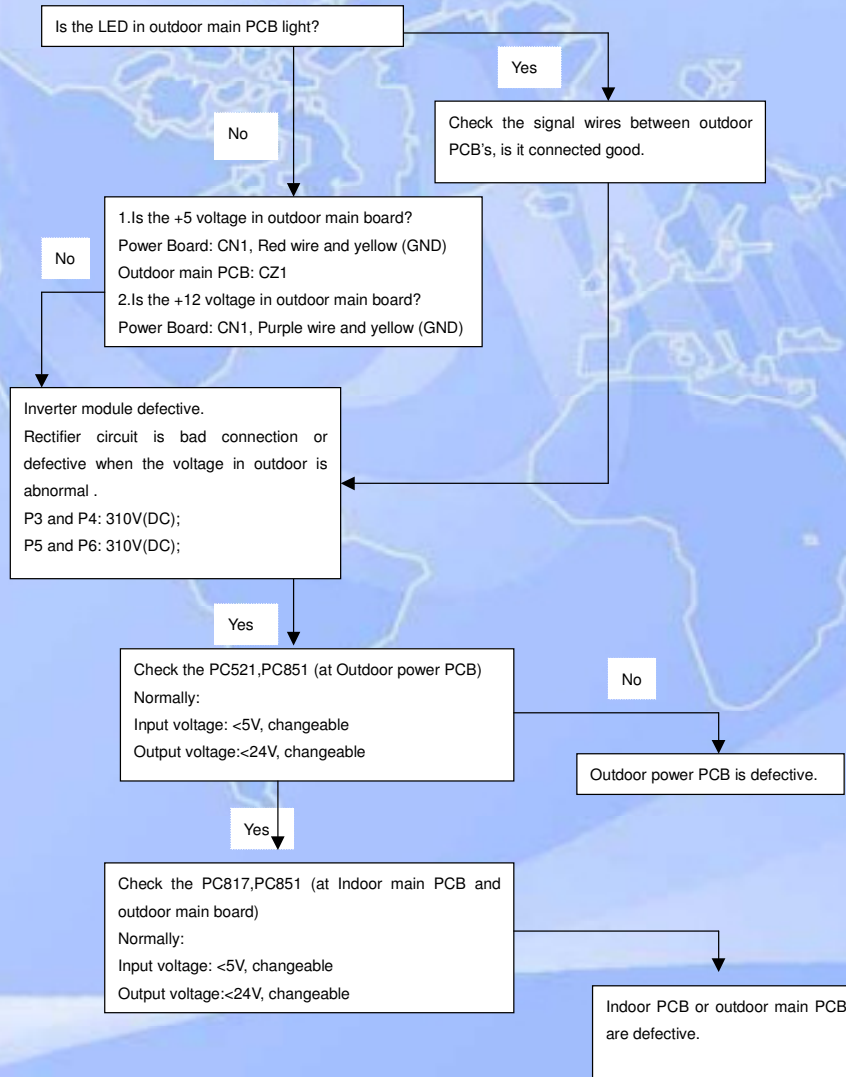
No

Replace the outdoor power board

# Troubleshooting

## Solution

Display	LED STATUS
E7	Indoor / outdoor units communication protection

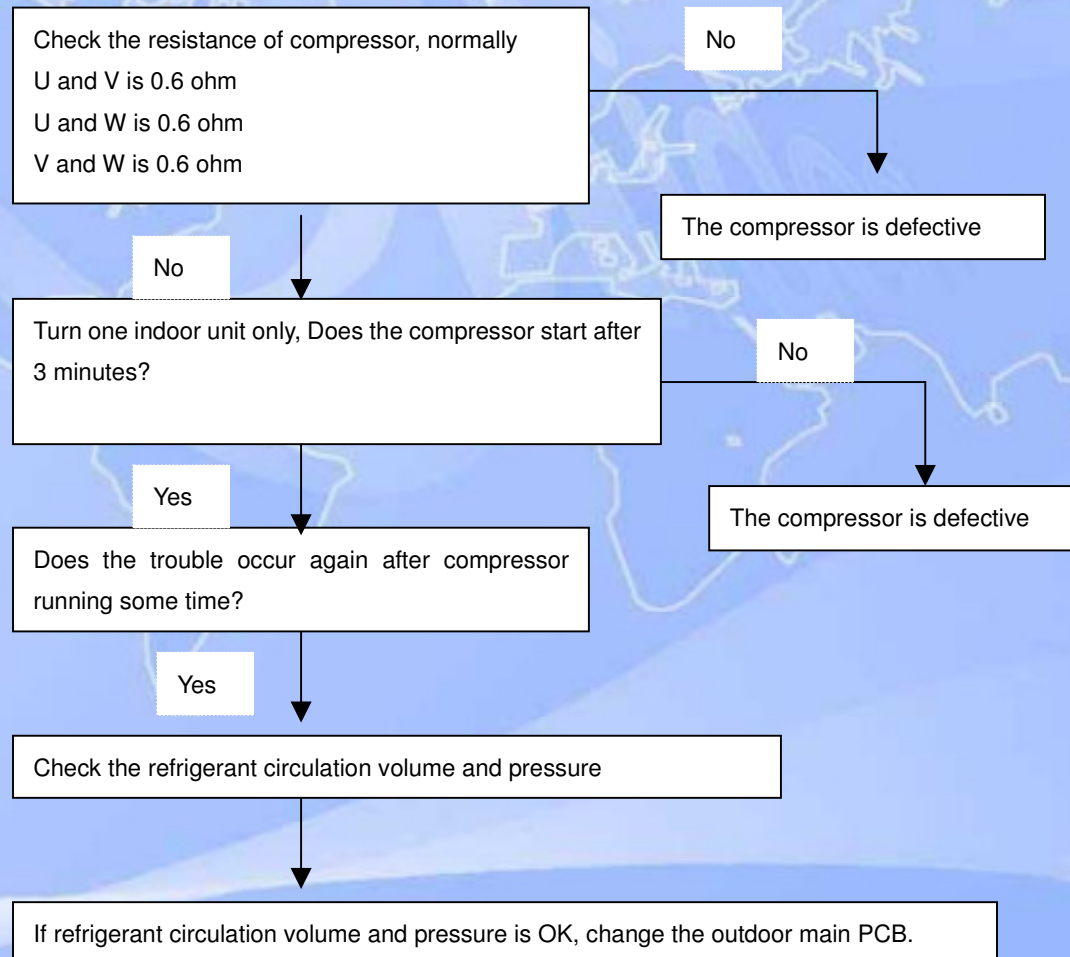




# Troubleshooting

## Solution

Display	LED STATUS
P3	Compressor current protection

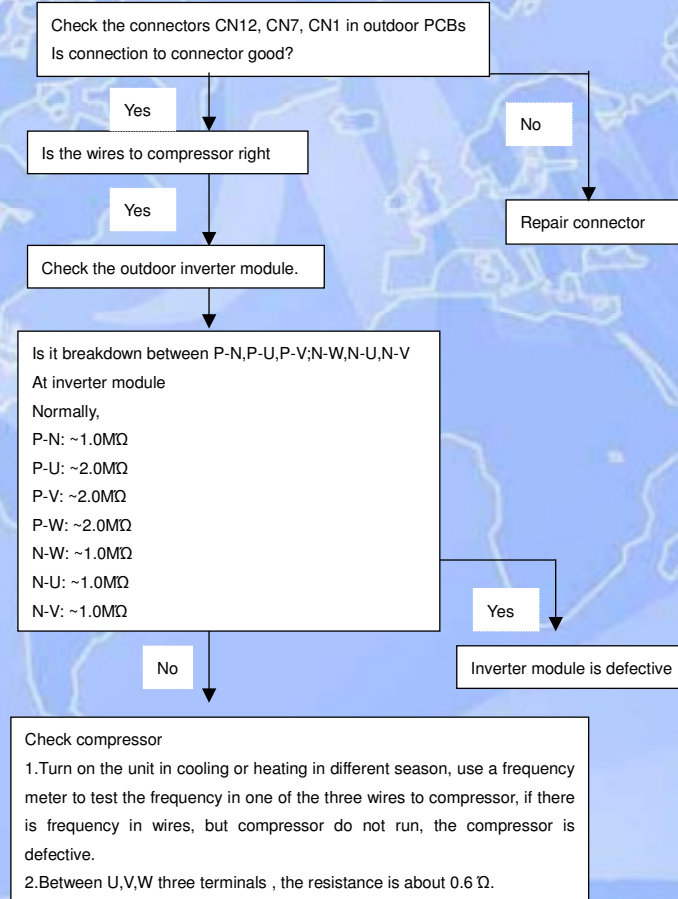




# Troubleshooting

## Solution

Display	LED STATUS
P4	Inverter module protection



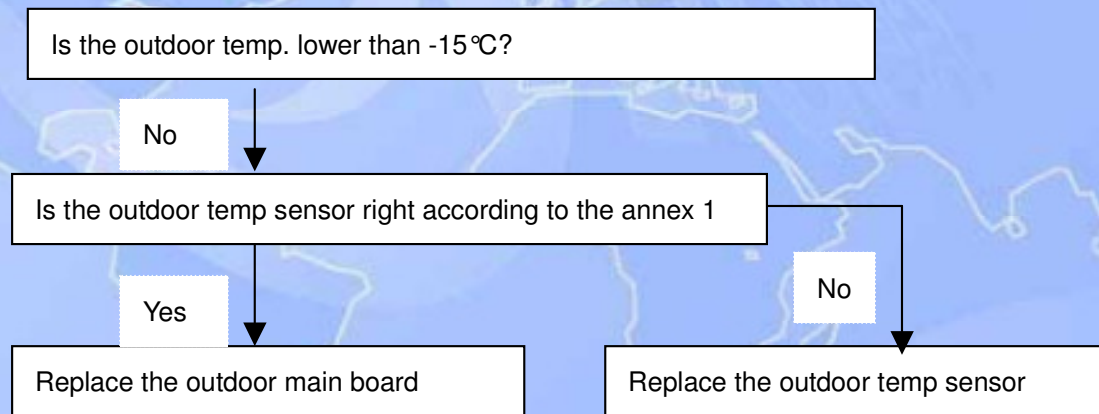
# Troubleshooting

## Solution

Display	LED STATUS
P5	Outdoor low temp. protection

This is optional, factory standard unit does not have this function.

Unit stops when outdoor temp. is lower than  $-15^{\circ}\text{C}$  and lasting time more than 60 minutes, and unit runs again when outdoor temp. more than  $-12^{\circ}\text{C}$ .



# Troubleshooting

## Solution

Display	LED STATUS
P6	Condenser high-temperature protection

When outdoor pipe temp. is more than 65°C, the unit will stop, and unit runs again when outdoor pipe temp. is less than 52°C.

