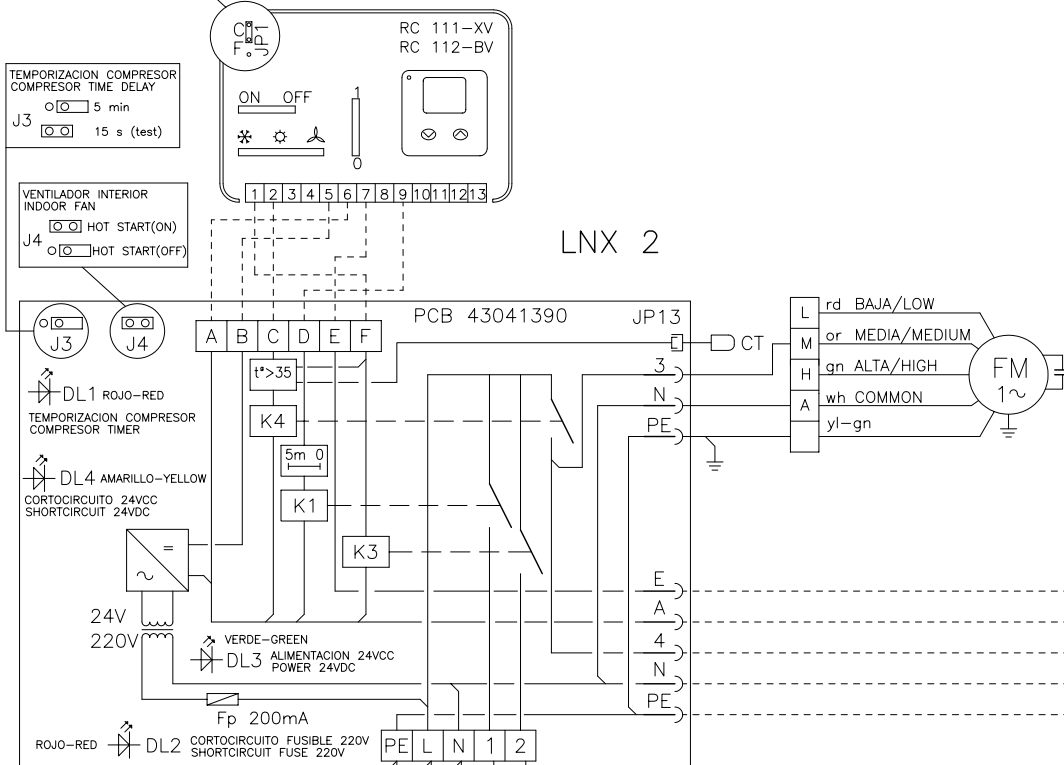


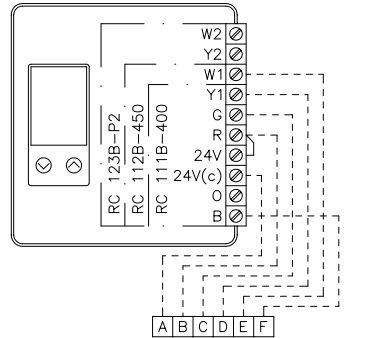
DUCTAIR – BOMBA DE CALOR / HEAT PUMP

PRECAUCION: JUMPER INTERNO JP1 SELECCIONA EL CICLO DE ACTIVACION DE LA VALVULA INVERSORA. C=CALENTAMIENTO / F=FRIO. JP1 DEBE ESTAR EN LA POSICION INDICADA EN ESQUEMA ELECTRICO.  
 CAUTION: JUMPER JP1 SELECTS THE ACTIVATION CYCLE OF REVERSING VALVE. C=HEATING / F=COOLING. JP1 MUST BE POSITIONED AS INDICATED ON ELECTRICAL DIAGRAM.

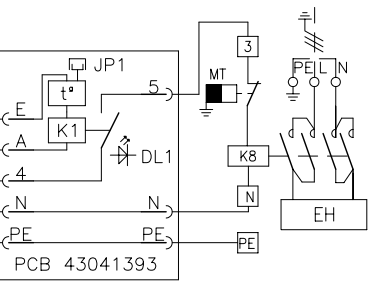


LNx 2

OPCIONALES/OPTIONAL

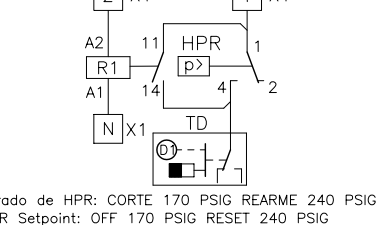


BATERIA ELECTRICA/ELECTRICAL HEATER

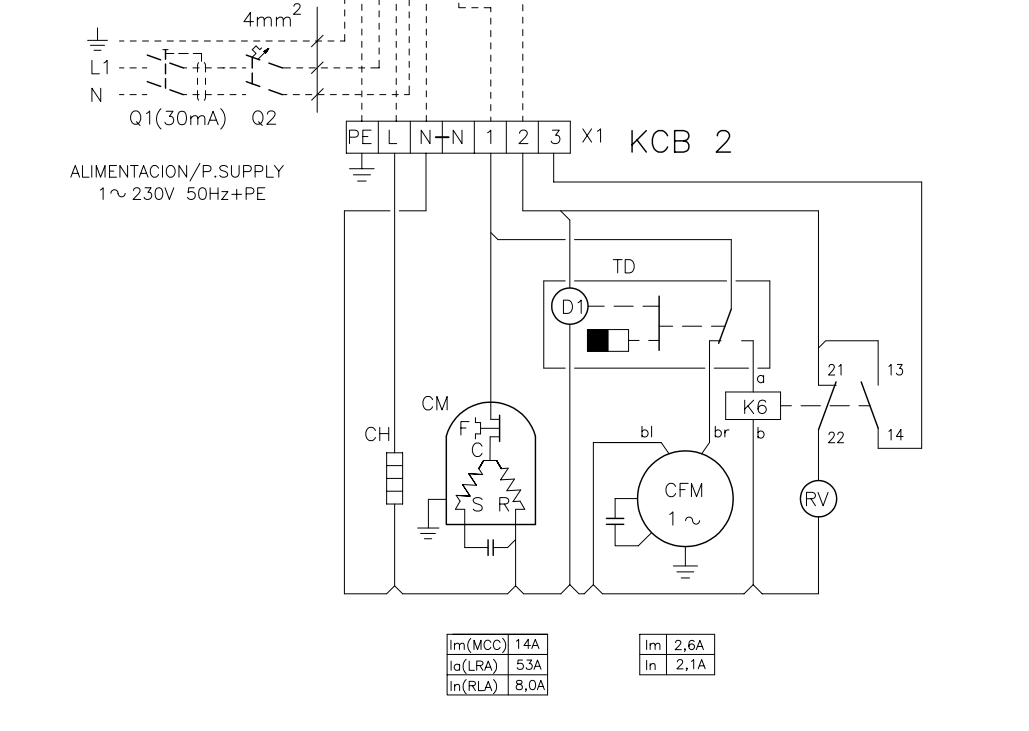
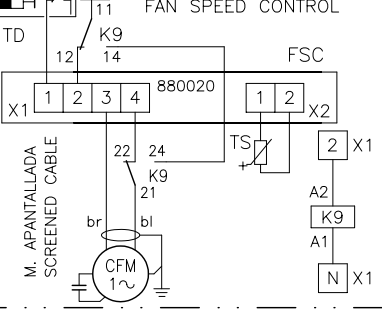


ALIMENTACION ELECTRICA INDEPENDIENTE / INDEPENDENT POWER SUPPLY

CONTROL CONDENSACION ON/OFF / WINTER CONTROL ON/OFF



CONTROL CONDENSACION / FAN SPEED CONTROL



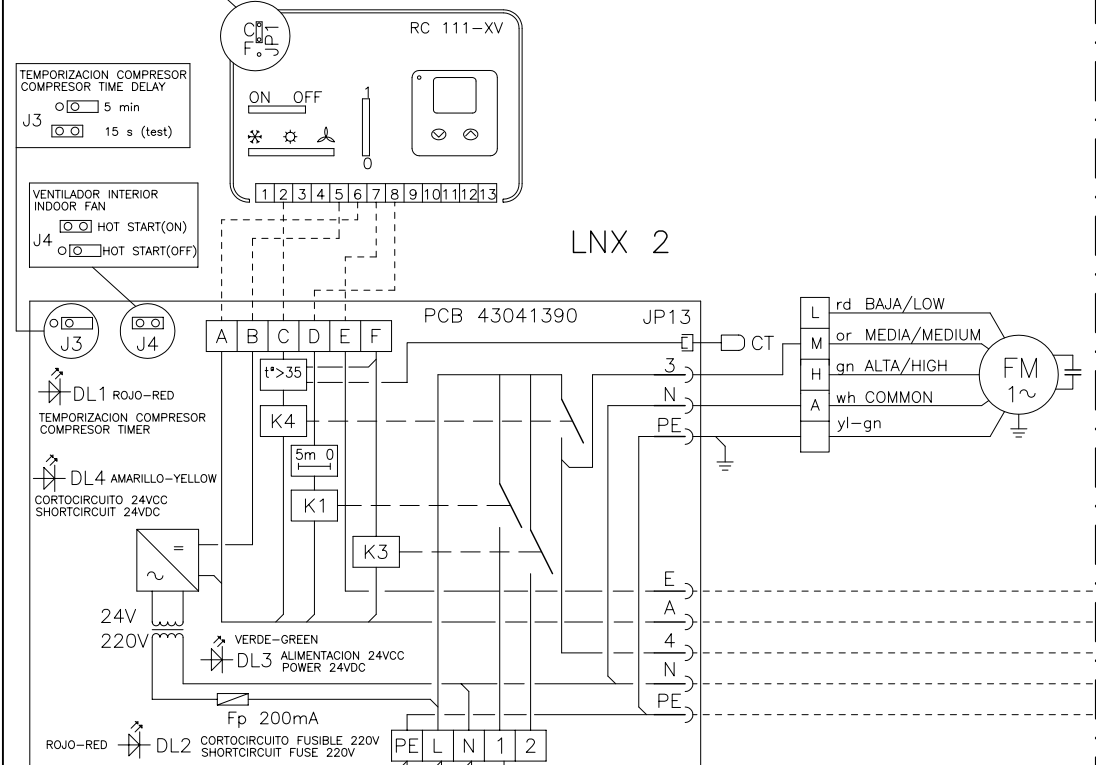
LNx	Unidad interior	Indoor unit	la(LRA)	Intensidad de arranque	Starting current
KCB	Unidad exterior	Outdoor unit	Im(MCC)	Intensidad máxima	Maximum current
CFM	Motor ventilador	Condenser fan motor	In(RLA)	Intensidad nominal (ARI)	Rated current (ARI)
CH	Calentador de carter	Crank case heater	K	Contacto	Contacto
CM	Motor compresor	Compressor motor	MT	Termostato de seguridad	Security Thermostat
CT	Temperatura batería interior	Indoor coil temperature	PCB	Placa de circuito impreso	Electronic control board
EH	Batería eléctrica OPCIONAL	Electric Heater OPTIONAL	Q1	Interruptor diferencial	Ground safety switch
F	Protección térmica	Thermal protection	Q2	Interruptor magnetotérmico	Circuit Breaker
FM	Motor ventilador interior	Internal fan motor	RC	Control remoto	Remote control
FSC	Control de condensación	Fan speed control	RV	Válvula inversora (ON bomba)	Reverse valve (ON heat pump)
Fp	Fusible del primario (200mA)	Primary fuse (200mA)	TS	temp. Termost. Desescarche	Temperature Sensor
HPR	Control Condensación ON/OFF	ON/OFF winter control			

wh	blanco	bk	negro	black
gn	verde	bl	azul	blue
or	naranja	br	marrón	brown
rd	rojo	yl	amarillo	yellow

Elemento Opcional	-----
Optional Element	-----
A Realizar por el Instalador	-----
Field wiring	-----

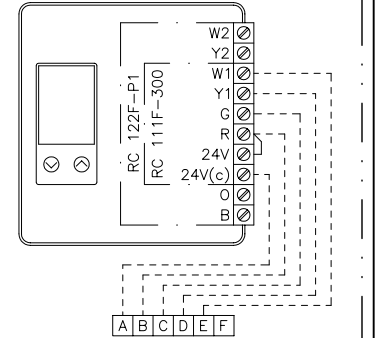
DUCTAIR – SOLO FRIO / COOLING ONLY

PRECAUCION: JUMPER INTERNO JP1 SELECCIONA EL CICLO DE ACTIVACION DE LA VALVULA INVERSORA. C=CALENTAMIENTO / F=FRIO. JP1 DEBE ESTAR EN LA POSICION INDICADA EN ESQUEMA ELECTRICO.  
 CAUTION: JUMPER JP1 SELECTS THE ACTIVATION CYCLE OF REVERSING VALVE. C=HEATING / F=COOLING. JP1 MUST BE POSITIONED AS INDICATED ON ELECTRICAL DIAGRAM.

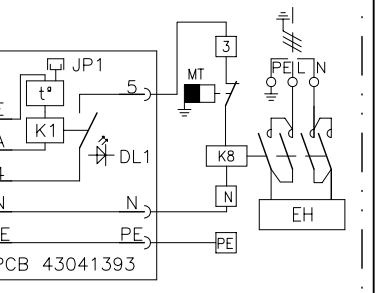


LNx 2

OPCIONALES/OPTIONAL

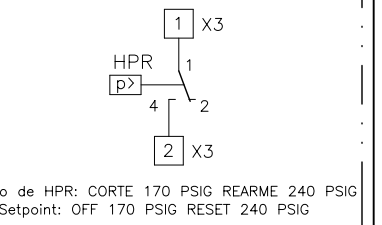


BATERIA ELECTRICA/ELECTRICAL HEATER

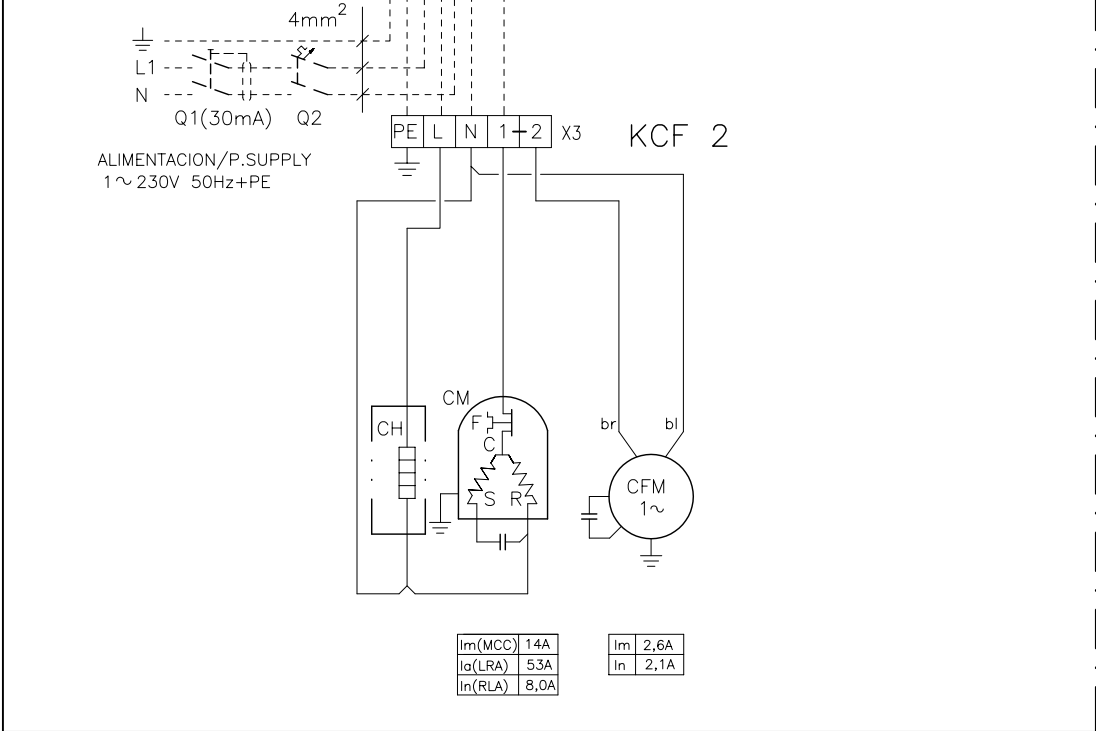
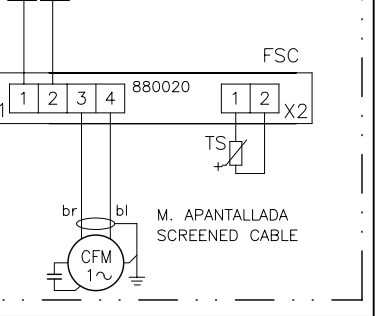


ALIMENTACION ELECTRICA INDEPENDIENTE / INDEPENDENT POWER SUPPLY

CONTROL CONDENSACION ON/OFF / WINTER CONTROL ON/OFF



CONTROL CONDENSACION / FAN SPEED CONTROL



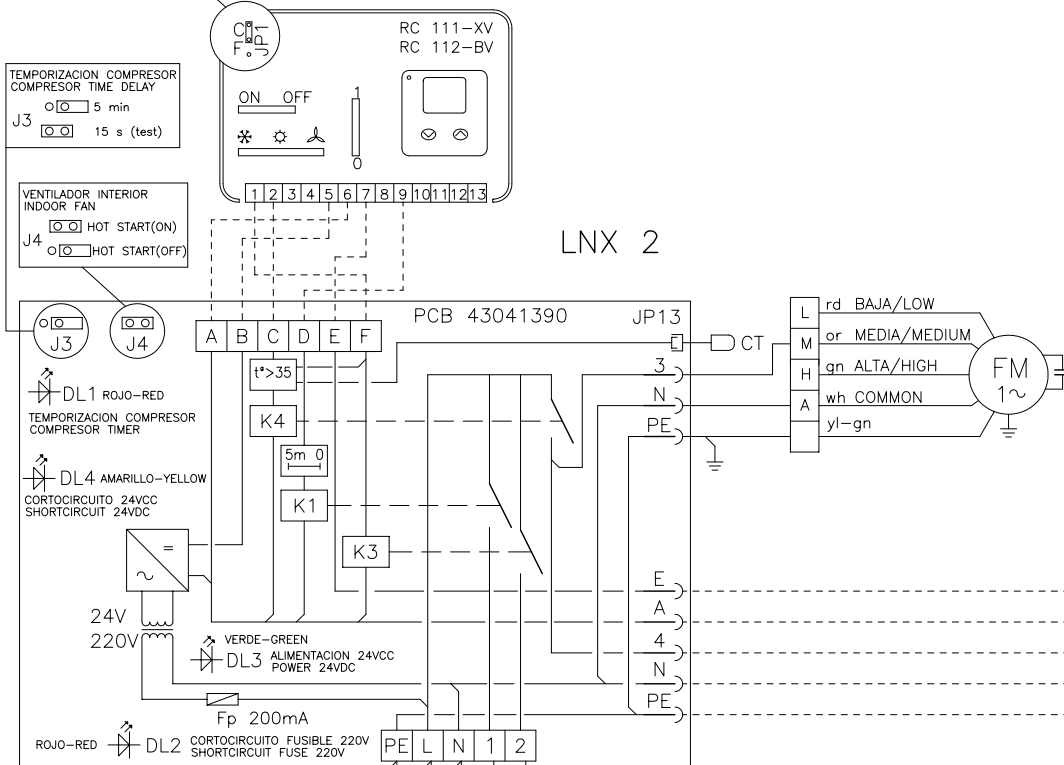
LNx	Unidad interior	Indoor unit	la(LRA)	Intensidad de arranque	Starting current
KCF	Unidad exterior	Outdoor unit	Im(MCC)	Intensidad máxima	Maximum current
CFM	Motor ventilador	Condenser fan motor	In(RLA)	Intensidad nominal (ARI)	Rated current (ARI)
CH	Calentador de carter	Crank case heater	K	Contacto	Contacto
CM	Motor compresor	Compressor motor	MT	Termostato de seguridad	Security Thermostat
CT	Temperatura batería interior	Indoor coil temperature	PCB	Placa de circuito impreso	Electronic control board
EH	Batería eléctrica OPCIONAL	Electric Heater OPTIONAL	Q1	Interruptor diferencial	Ground safety switch
F	Protección térmica	Thermal protection	Q2	Interruptor magnetotérmico	Circuit Breaker
FM	Motor ventilador interior	Internal fan motor	RC	Control remoto	Remote control
FSC	Control de condensación	Fan speed control	TS	Sensor de Temperatura	Temperature Sensor
Fp	Fusible del primario (200mA)	Primary fuse (200mA)			
HPR	Control Condensación ON/OFF	ON/OFF winter control			

wh	blanco	bk	negro	black
gn	verde	bl	azul	blue
or	naranja	br	marrón	brown
rd	rojo	yl	amarillo	yellow

Elemento Opcional	-----
Optional Element	-----
A Realizar por el Instalador	-----
Field wiring	-----

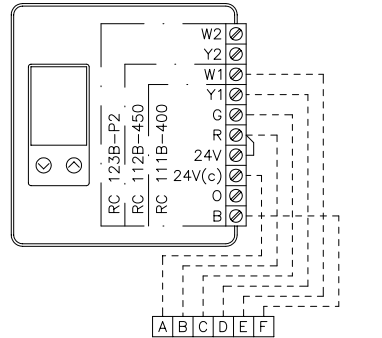
DUCTAIR – BOMBA DE CALOR / HEAT PUMP

PRECAUCION: JUMPER INTERNO JP1 SELECCIONA EL CICLO DE ACTIVACION DE LA VALVULA INVERSORA. C=CALOR / F=FRIO. JP1 DEBE ESTAR EN LA POSICION INDICADA EN ESQUEMA ELECTRICO.  
 CAUTION: JUMPER JP1 SELECTS THE ACTIVATION CYCLE OF REVERSING VALVE. C=HEATING / F=COOLING. JP1 MUST BE POSITIONED AS INDICATED ON ELECTRICAL DIAGRAM.

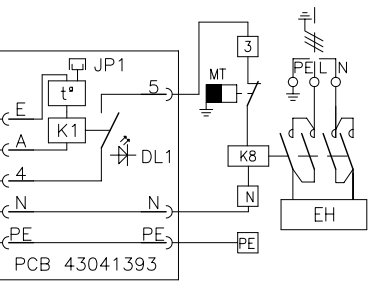


LNX 2

OPCIONALES/OPTIONAL

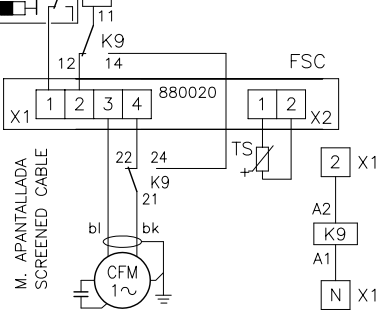


BATERIA ELECTRICA/ELECTRICAL HEATER



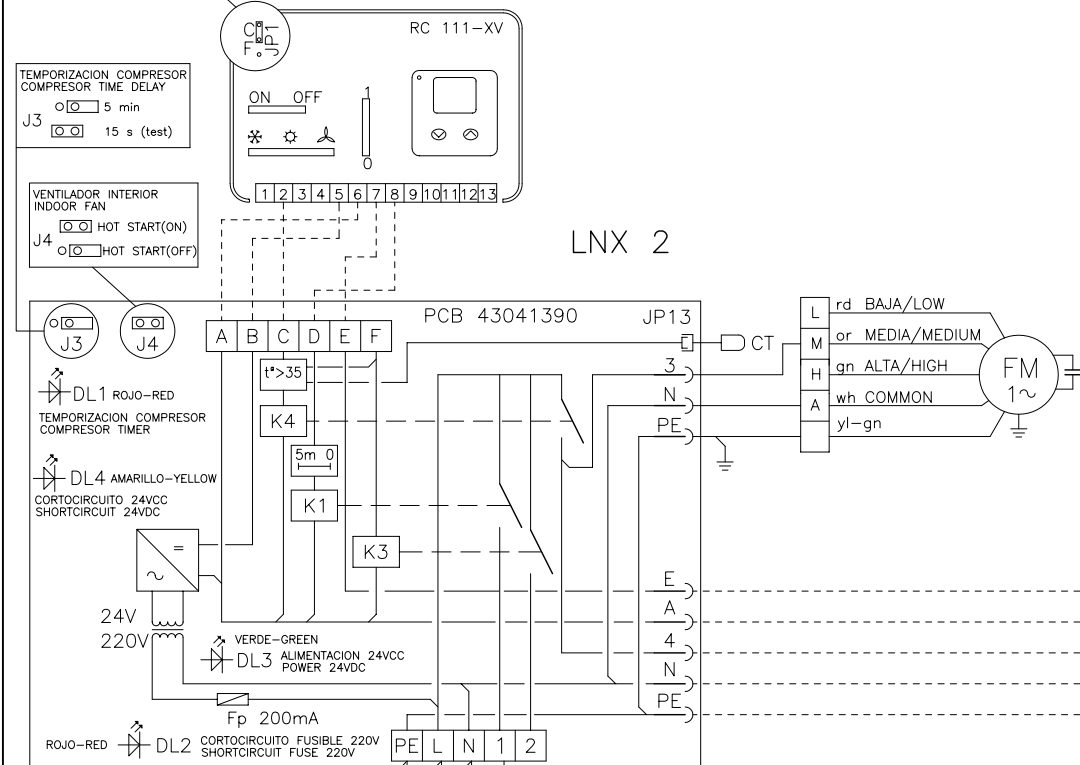
ALIMENTACION ELECTRICA INDEPENDIENTE INDEPENDENT POWER SUPPLY

CONTROL CONDENSACION FAN SPEED CONTROL



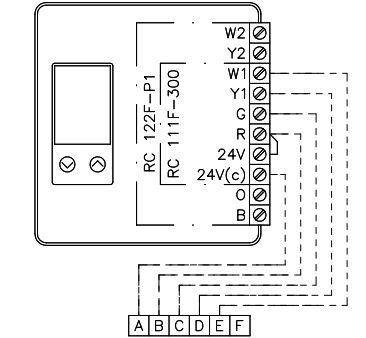
DUCTAIR – SOLO FRIO / COOLING ONLY

PRECAUCION: JUMPER INTERNO JP1 SELECCIONA EL CICLO DE ACTIVACION DE LA VALVULA INVERSORA. C=CALOR / F=FRIO. JP1 DEBE ESTAR EN LA POSICION INDICADA EN ESQUEMA ELECTRICO.  
 CAUTION: JUMPER JP1 SELECTS THE ACTIVATION CYCLE OF REVERSING VALVE. C=HEATING / F=COOLING. JP1 MUST BE POSITIONED AS INDICATED ON ELECTRICAL DIAGRAM.

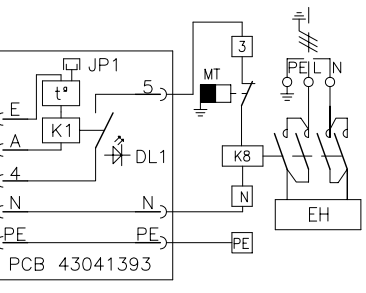


LNX 2

OPCIONALES/OPTIONAL

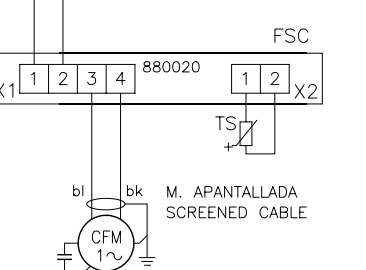


BATERIA ELECTRICA/ELECTRICAL HEATER



ALIMENTACION ELECTRICA INDEPENDIENTE INDEPENDENT POWER SUPPLY

CONTROL CONDENSACION FAN SPEED CONTROL



- |     |                              |                          |         |                              |                              |
|-----|------------------------------|--------------------------|---------|------------------------------|------------------------------|
| LNX | Unidad interior              | Indoor unit              | la(LRA) | Intensidad de arranque       | Starting current             |
| KRB | Unidad exterior              | Outdoor unit             | Im(MCC) | Intensidad máxima            | Maximum current              |
| CFM | Motor ventilador             | Condenser fan motor      | In(RLA) | Intensidad nominal (ARI)     | Rated current (ARI)          |
| CH  | Calentador de carter         | Crank case heater        | K       | Contacto                     | Contact                      |
| CM  | Motor compresor              | Compressor motor         | MT      | Termostato de seguridad      | Security Thermostat          |
| CT  | Temperatura batería interior | Indoor coil temperature  | PCB     | Placa de circuito impreso    | Electronic control board     |
| EH  | Batería eléctrica OPCIONAL   | Electric Heater OPTIONAL | Q1      | Interruptor diferencial      | Ground safety switch         |
| F   | Protección térmica           | Thermal protection       | Q2      | Interruptor magnetotérmico   | Circuit Breaker              |
| FM  | Motor ventilador interior    | Indoor fan motor         | RC      | Control remoto               | Remote control               |
| FSC | Control de condensación      | Fan speed control        | RV      | Válvula inversora (ON bomba) | Reverse valve (ON heat pump) |
| Fp  | Fusible del primario (200mA) | Primary fuse (200mA)     | TD      | temp. Termost. Desescarche   | Timer Defrost                |
|     |                              |                          | TS      | Sensor de Temperatura        | Temperature Sensor           |

- |    |         |        |    |          |        |
|----|---------|--------|----|----------|--------|
| wh | blanco  | white  | bk | negro    | black  |
| gn | verde   | green  | bl | azul     | blue   |
| or | naranja | orange | br | marrón   | brown  |
| rd | rojo    | red    | yl | amarillo | yellow |

- |     |                              |                          |         |                              |                              |
|-----|------------------------------|--------------------------|---------|------------------------------|------------------------------|
| LNX | Unidad interior              | Indoor unit              | la(LRA) | Intensidad de arranque       | Starting current             |
| KJF | Unidad exterior              | Outdoor unit             | Im(MCC) | Intensidad máxima            | Maximum current              |
| CFM | Motor ventilador             | Condenser fan motor      | In(RLA) | Intensidad nominal (ARI)     | Rated current (ARI)          |
| CH  | Calentador de carter         | Crank case heater        | K       | Contacto                     | Contact                      |
| CM  | Motor compresor              | Compressor motor         | MT      | Termostato de seguridad      | Security Thermostat          |
| CT  | Temperatura batería interior | Indoor coil temperature  | PCB     | Placa de circuito impreso    | Electronic control board     |
| EH  | Batería eléctrica OPCIONAL   | Electric Heater OPTIONAL | Q1      | Interruptor diferencial      | Ground safety switch         |
| F   | Protección térmica           | Thermal protection       | Q2      | Interruptor magnetotérmico   | Circuit Breaker              |
| FM  | Motor ventilador interior    | Indoor fan motor         | RC      | Control remoto               | Remote control               |
| FSC | Control de condensación      | Fan speed control        | RV      | Válvula inversora (ON bomba) | Reverse valve (ON heat pump) |
| Fp  | Fusible del primario (200mA) | Primary fuse (200mA)     | TD      | temp. Termost. Desescarche   | Timer Defrost                |
|     |                              |                          | TS      | Sensor de Temperatura        | Temperature Sensor           |

- |    |         |        |    |          |        |
|----|---------|--------|----|----------|--------|
| wh | blanco  | white  | bk | negro    | black  |
| gn | verde   | green  | bl | azul     | blue   |
| or | naranja | orange | br | marrón   | brown  |
| rd | rojo    | red    | yl | amarillo | yellow |