

# PRODUCT CATALOGUE



PROVIDING **GLOBAL SYSTEM** SOLUTIONS

FAN COIL UNIT  
HC - HT - HH - HD



## INTRODUCTION TO THE RANGE

The Comfair HC is a floor-standing centrifugal fan coil available in 12 sizes in 7 different configurations:

- Vertical, enclosed (2 versions)
- Horizontal, enclosed (2 versions)
- Non-enclosed versions, vertical and horizontal

## CONSTRUCTION

- Galvanized sheet steel cabinet, painted with 0.8 mm thickness
- ABS diffusers
- Copper-aluminium heat exchanger, test pressure 30 bars, left- or right-hand connection (specify when ordering)
- Centrifugal double intake fan system (1, 2 or 3 fans) with aluminium blades
- Control panel on opposite side
- Class EU1 side air filter

## OPTIONS (factory fitted)

- Isolation and control valve
- 4-way solenoid valve (different models available)
- Integrated controls

## ACCESSORIES (delivered unassembled)

- Bulb thermostat for heated environment (TA)
- Minimum water temperature thermostat (TC)
- Remote controls (CD1, CD2/X1, etc.)
- Auxiliary condensate collection tray (also available in horizontal version)
- Auxiliary coils, one set
- Electrical resistance heater
- Distribution and intake plenum
- Fresh air dampers (also available in motorized version)
- Intake grille with filter
- Various panels
- Feet
- Adjustable distribution outlets, etc.



HC 1 → 11 kW

## GENERAL DATA

COMFAIR		HC	10	20	30	40	50	60	70	80	90	100	110	120
<b>2 pipes system - 3 rows coil</b>														
Cooling capacity <sup>(1)</sup>	Sensible	kW	0,74	1,02	1,51	2,17	2,18	2,66	3,11	3,96	4,81	6,06	7,91	8,48
	Total	kW	0,87	1,28	2,07	2,53	3,11	3,85	4,69	5,59	6,88	7,98	10,02	11,01
Heating capacity <sup>(2)</sup>		kW	1,25	1,87	2,59	3,28	3,66	4,48	5,13	6,69	8,11	10,06	13,08	14,15
Water flow		l/h	149	220	357	436	536	664	808	964	1186	1045	1364	1462
Water pressure drop	Cooling	kPa	0,8	2	6	8,8	16,2	26	56	28	43,1	26,6	17,1	26,8
	Heating	kPa	0,7	1,7	5,1	7,5	13,8	22,1	47,6	23,8	36,6	23,3	11,4	21,8
Heating capacity <sup>(3)</sup>		kW	2,12	3,19	4,33	5,51	6,08	7,44	8,47	11,14	13,49	16,87	22,02	23,77
Electrical Heater		kW	/	1	1	1	2	2	2	3	3	TBA	TBA	TBA
Heater		A	/	4,55	4,55	4,55	9,1	9,1	9,1	13,65	13,65	TBA	TBA	TBA
Airflow		m <sup>3</sup> /h	227	289	404	453	575	685	708	1058	1242	1356	2012	2003
Sound power level <sup>(5)</sup>		dB(A)		46	44	44	47	47	52	52	58	64	62	66
Sound pressure level at 2,5 m <sup>(6)</sup>		dB(A)	30	28	28	31	31	36	36	42	48	46	50	50
<b>4 pipes system - 3 + 1 rows coil</b>														
Cooling capacity <sup>(1)</sup>	Sensible	kW	0,81	1,12	1,69	1,93	2,49	2,91	3,35	4,32	5,26	5,86	6,41	8,21
	Total	kW	0,84	1,23	2,08	2,38	2,96	3,68	4,47	5,33	6,57	7,71	8,22	10,66
Heating capacity		kW <sup>(3)</sup>	1,26	1,89	2,73	2,89	3,49	4,13	5,04	6,19	7,67	8,39	8,84	11,43
water flow		kW <sup>(4)</sup>	1,4	2,09	3,02	3,2	3,9	4,59	5,64	6,92	8,37	9,29	11,36	12,85
Water pressure drop	Cooling	l/h <sup>(1)</sup>	144	213	358	410	511	635	771	919	1133	1330	1418	1837
	Heating	l/h <sup>(3)</sup>	109	163	235	249	301	356	435	534	661	739	79	1008
Water pressure drop	Cooling	kPa	0,8	2	5,7	8,2	14,5	23	50	24	38	24,9	10,7	25,1
	Heating	kPa	0,3	0,7	1,7	2	3,4	4,2	7,5	13,9	21,7	17,2	21,2	34
Airflow		m <sup>3</sup> /h	216	275	384	430	546	651	673	1005	1180	1291	1502	1908
Sound power level <sup>(5)</sup>		dB(A)		47	47	44	48	46	53	53	59	65	63	61
Sound pressure level at 2,5 m <sup>(6)</sup>		dB(A)	31	31	28	32	30	37	37	43	49	47	45	50
<b>Available static pressure (high speed)</b>														
2 pipes system		Pa	25	25	19	27	32	36	44	55	53	75	76	84
4 pipes system		Pa	19	19	15	22	25	28	36	42	44	74	75	85

Nominal measurement conditions: Maximum speed - Unit not connected (ESP = 0 Pa)

(1) Cooling: Water inlet temperature: 7°C; water outlet temperature: 12°C; air inlet temperature: 27°C D.B - 19°C W.B

(2) Heating: Water inlet temperature: 50°C; water flow rate as in cooling mode; air inlet temperature: 20°C

(3) Heating: Water inlet temperature: 70°C; water outlet temperature: 60°C; air inlet temperature: 20°C

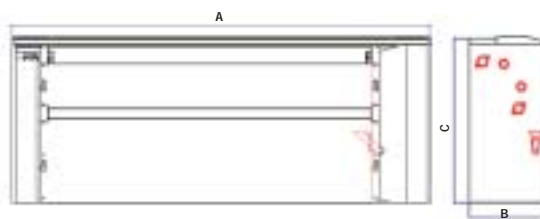
(4) Heating: Water inlet temperature: 80°C; water outlet temperature: 60°C; air inlet temperature: 20°C

(5) Sound power level: according to ISO 23741

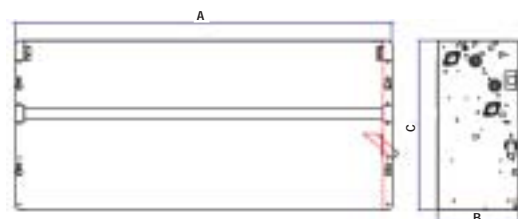
(6) Sound pressure level: in semi-reflecting field

## PHYSICAL DATA

1



2



COMFAIR		HC	10	20	30	40	50	60	70	80	90	100	110	120
Standard coil	Rows	Nb	3	3	3	3	3	3	3	3	3	3	3	3
	Connections	Φ mm	3/4"	3/4"	3/4"	3/4"	3/4"	3/4"	3/4"	3/4"	3/4"	3/4"	3/4"	3/4"
Auxiliary coil	Rows	Nb	1	1	1	1	1	1	1	1	1	1	1	1
	Connections	Φ mm	1/2"	1/2"	1/2"	1/2"	1/2"	1/2"	1/2"	1/2"	1/2"	1/2"	1/2"	1/2"
Drain connection (out)		Φ mm	20	20	20	20	20	20	20	20	20	20	20	20
<b>Cased units</b>														
View			<b>1</b>	<b>1</b>	<b>1</b>	<b>1</b>	<b>1</b>	<b>1</b>	<b>1</b>	<b>1</b>	<b>1</b>	<b>1</b>	<b>1</b>	<b>1</b>
A	mm		660	860	1060	1060	1260	1260	1260	1460	1460	1660	1960	1960
B	mm		220	220	220	220	220	220	220	220	220	256	256	256
C	mm		480	480	480	480	480	480	585	585	585	602	602	602
Net weight	kg		14	17	22	23	27	28	30	35	36	46	55	57
<b>Chassis units</b>														
View			<b>2</b>	<b>2</b>	<b>2</b>	<b>2</b>	<b>2</b>	<b>2</b>	<b>2</b>	<b>2</b>	<b>2</b>	<b>2</b>	<b>2</b>	<b>2</b>
A	mm		420	420	820	820	1020	1020	1020	1220	1220	1380	1680	1680
B	mm		220	220	220	220	220	220	220	220	220	256	256	256
C	mm		460	460	460	460	460	460	565	565	565	585	585	585
Net weight	kg		8	11	16	17	19	20	20	25	26	36	45	47





## INTRODUCTION TO THE RANGE

The Comfair HT is a tangential fan coil, very similar to the Comfair HC. The HT model is available in 5 sizes, in 5 different configurations.

## CONSTRUCTION

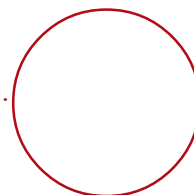
- Galvanized sheet steel cabinet, painted with 0.8 mm thickness
- ABS diffusers
- Copper-aluminium heat exchanger, test pressure 30 bars, left-hand connection only
- Tangential fan
- Control panel on opposite side
- Class EU1 side air filter

## OPTIONS (factory fitted)

- Isolation and control valve
- 4-way solenoid valve (different models available)
- Integrated controls

## ACCESSORIES (delivered unassembled)

- Bulb thermostat for heated environment (TA)
- Minimum water temperature thermostat (TC)
- Remote controls (CD1, CD2/X1, etc.)
- Auxiliary condensate collection tray (also available in horizontal version)
- Auxiliary coils, one set
- Electrical resistance heater
- Distribution and intake plenum
- Fresh air dampers (also available in motorized version)
- Intake grille with filter
- Various panels
- Feet
- Adjustable distribution outlets, etc.



HT 1 → 3 kW

## GENERAL DATA

COMFAIR		HT	100	200	300	400	600
<b>2 pipes system - 3 rows coil</b>							
Cooling capacity <sup>(1)</sup>	Sensible	kW	0,75	0,92	1,54	2,02	2,59
	Total	kW	0,78	1,04	1,95	2,66	3,36
Heating capacity <sup>(2)</sup>		kW	1,19	1,51	2,42	3,07	3,94
Water flow		l/h	135	179	337	458	579
Water pressure drop	Cooling	kPa	4	3	10	22	18
	Heating	kPa	4	3	9	19	16
Heating capacity <sup>(3)</sup>		kW	2,05	2,57	4,05	5,10	6,56
Electrical heater		kW	1	1	1	2	3
Airflow		m <sup>3</sup> /h	233	267	405	494	645
Sound power level <sup>(5)</sup>		dB(A)	47	47	48	50	51
Sound pressure level at 2,5 m <sup>(6)</sup>		dB(A)	31	31	32	34	35
<b>4 pipes system - 3 + 1 rows coil</b>							
Cooling capacity <sup>(1)</sup>	Sensible	kW	0,69	0,81	1,25	1,74	2,23
	Total	kW	0,72	0,92	1,59	2,33	2,94
Heating capacity		kW <sup>(3)</sup>	1,5	1,62	2,48	3,15	4,06
		kW <sup>(4)</sup>	1,69	1,8	2,73	3,49	4,54
Water flow	Cooling	l/h <sup>(1)</sup>	125	158	273	401	506
	Heating	l/h <sup>(3)</sup>	129	140	213	272	350
Water pressure drop	Cooling	kPa	3	2	7	16	13
	Heating	kPa	3	4	9	18	36
Airflow		m <sup>3</sup> /h	221	253	384	469	612
Sound power level <sup>(5)</sup>		dB(A)	49	49	50	52	53
Sound pressure level at 2,5 m <sup>(6)</sup>		dB(A)	33	33	34	36	37

Nominal measurement conditions: Maximum speed - Unit not connected (ESP = 0 Pa)

(1) Cooling: Water inlet temperature: 7°C; water outlet temperature: 12°C; air inlet temperature: 27°C D.B - 19°C W.B

(2) Heating: Water inlet temperature: 50°C; water flow rate as in cooling mode; air inlet temperature: 20°C

(3) Heating: Water inlet temperature: 70°C; water outlet temperature: 60°C; air inlet temperature: 20°C

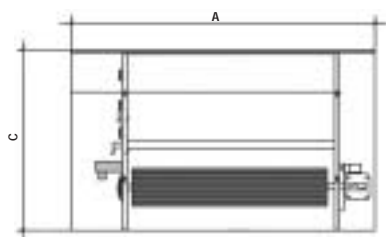
(4) Heating: Water inlet temperature: 80°C; water outlet temperature: 60°C; air inlet temperature: 20°C

(5) Sound power level : according to ISO 23741

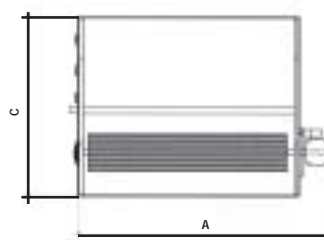
(6) Sound pressure level : in semi-reflecting field

## PHYSICAL DATA

1



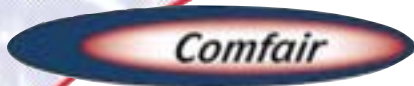
2



COMFAIR		HT	100	200	300	400	600
Standard coil	Rows	Nb	2	3	3	3	3
	Connections	Φ mm	1/2"	1/2"	1/2"	1/2"	1/2"
Auxiliary coil	Rows	Nb	1	1	1	1	1
	Connections	Φ mm	1/2"	1/2"	1/2"	1/2"	1/2"
<b>Cased units</b>							
<b>View</b>			<b>1</b>	<b>1</b>	<b>1</b>	<b>1</b>	<b>1</b>
A	mm		760	760	960	1160	1360
B	mm		200	200	200	200	200
C	mm		480	480	480	480	480
Net weight	kg		15	16	21	26	30
<b>Chassis units</b>							
<b>View</b>			<b>2</b>	<b>2</b>	<b>2</b>	<b>2</b>	<b>2</b>
A	mm		635	635	835	1035	1235
B	mm		200	200	200	200	200
C	mm		460	460	460	460	460
Net weight	kg		9	10	15	18	20







## INTRODUCTION TO THE RANGE

The Comfair HH fan coil features a high available pressure (105 to 260 Pa) and is offered in 7 sizes.

## CONSTRUCTION

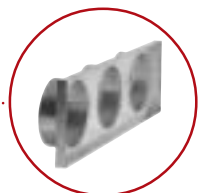
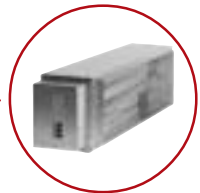
- **Fan unit:** This consists of one or two centrifugal twin-intake fans with horizontally extending aluminium blades, with static and dynamic balancing. The overload-protected electric motor has three operating speeds. It is directly coupled to the fans and is mounted on elastic mountings. The whole assembly is particularly quiet-running..
- **Frame:** Made from very thick galvanized sheet (1 mm).
- **Exchanger:** The exchangers are made from copper tube with aluminium fins crimped by mechanical expansion of the tubes. The connection is of the twist-proof female type; the collectors are fitted with easily accessible air bleed valves.
- **Control panel:** Comfair HH fan convectors must be controlled by a remote control module, to be ordered separately. There is a wide range of models to meet all requirements.

## OPTIONS (factory fitted)

- Two- or three-way valves
- Stop valves
- Condensate drain pump

## ACCESSORIES (delivered unassembled)

- Bulb thermostat for heated environment (TA)
- Minimum water temperature thermostat (TC)
- Remote controls (CD1, CD2/X1, etc.)
- Interface card for controlling 4 units (SDI)
- Air filter (SFA)
- Auxiliary condensate tray (UTC)
- Auxiliary coils, one set
- Electrical resistance heater (SRE)
- Section with manual fresh air damper (SSP)
- Intake or discharge plenum (PAM)
- 90° intake or discharge plenum (RAM)
- Intake or distribution section with circular connections (BAM)



HH 4 → 51 kW

## GENERAL DATA

COMFAIR		HH	10	20	30	40	50	60	70
<b>2 pipes system - 3 rows coil</b>									
Cooling capacity <sup>(1)</sup>	Sensible	kW	3,25	5,64	7,36	8,63	11,02	21,13	39,50
	Total	kW	4,01	7,05	9,20	10,60	13,09	27,81	50,64
Heating capacity <sup>(2)</sup>		kW	1,97	8,51	11,21	12,80	16,82	32,43	60,11
Water flow		l/h	691	1215	1586	1827	2257	4795	8731
Water pressure drop	Cooling	kPa	20	31	34	32	36	34	40
	Heating	kPa	17	27	29	28	31	29	34
Heating capacity <sup>(3)</sup>		kW	8,32	14,20	18,72	21,35	28,25	53,88	100,07
Electrical heater	Standard	kW	3,00	6,00	6,00	9,00	9,00	12,00	18,00
	Haute	kW	4,50	9,00	9,00	12,00	12,00	18,00	24,00
Airflow		m <sup>3</sup> /h	837	1423	1951	2131	3002	4678	9250
Sound power level <sup>(5)</sup>		dB(A)	68	69	70	69	74	78	81
Sound pressure level at 2,5 m <sup>(6)</sup>		dB(A)	52	53	54	53	58	62	65
<b>4 pipes system - 3 + 1 rows coil</b>									
Cooling capacity <sup>(1)</sup>	Sensible	kW	3,11	5,33	7,05	8,02	10,56	20,19	37,79
	Total	kW	3,60	6,35	8,29	9,55	12,26	24,99	45,56
Heating capacity		kW <sup>(3)</sup>	4,18	7,00	9,15	10,54	13,99	38,83	70,20
		kW <sup>(4)</sup>	4,65	7,79	10,17	11,74	15,58	43,26	78,2
Water flow	Cooling	l/h <sup>(1)</sup>	621	1095	1429	1646	2114	4308	7856
	Heating	l/h <sup>(3)</sup>	361	603	789	909	1206	3348	6051
Water pressure drop	Cooling	kPa	16	24	28	25	31	27	32
	Heating	kPa	27	23	36	21	34	33	36
Airflow		m <sup>3</sup> /h	795	1352	1853	2024	2852	4444	8788
Sound power level <sup>(5)</sup>		dB(A)	68	69	70	70	73	78	81
Sound pressure level at 2,5 m <sup>(6)</sup>		dB(A)	52	53	54	54	57	62	65
<b>Available static pressure</b>									
2 pipes system	Pa	Min speed	90	80	115	105	135	220	220
		Med speed	95	95	130	130	180	240	240
		Max speed	105	105	135	135	205	260	260
4 pipes system	Pa	Min speed	75	70	95	90	110	180	180
		Med speed	85	80	115	115	155	210	210
		Max speed	95	90	120	120	180	220	220

Nominal measurement conditions: Maximum speed - Unit not connected (ESP = 0 Pa)

(1) Cooling: Water inlet temperature: 7°C; water outlet temperature: 12°C; air inlet temperature: 27°C D.B - 19°C W.B

(2) Heating: Water inlet temperature: 50°C; water flow rate as in cooling mode; air inlet temperature: 20°C

(3) Heating: Water inlet temperature: 70°C; water outlet temperature: 60°C; air inlet temperature: 20°C

(4) Heating: Water inlet temperature: 80°C; water outlet temperature: 60°C; air inlet temperature: 20°C

(5) Sound power level: according to ISO 23741

(6) Sound pressure level: in semi-reverberating field

## PHYSICAL DATA



COMFAIR		HH	10	20	30	40	50	60	70
Standard coil	Rows	Nb	3	3	3	3	3	4	4
	Connections	Φ mm	1/2"	1/2"	3/4"	3/4"	1"	1" 1/4	1" 1/2
Auxiliary coil	Rows	Nb	1	1	1	1	1	2	2
	Connections	Φ mm	1/2"	1/2"	1/2"	1/2"	3/4"	1"	1" 1/4
Drain connection (out)		Φ mm	20	20	20	20	20	20	20
A		mm	650	1000	1100	1339	1339	1341	2028
B		mm	533	533	533	533	533	853	853
C		mm	299	299	324	324	374	674	674
Net weight		kg	28	36	41	46	57	117	192





## INTRODUCTION TO THE RANGE

The Comfair HD is a wall-mounted fan coil with the same design as the wall-mounted split systems, available in 3 sizes.

## CONSTRUCTION

- ABS outer cabinet
- Galvanized steel wall support
- Tangential fan for quieter running
- Automatic horizontal deflection system (35° for cooling and 10° for heating)
- Air filtration and ionization
- Copper-aluminium coils
- Infrared remote controller with LCD screen

## GENERAL DATA

COMFAIR		HD	1	2	3
Cooling capacity <sup>(1)</sup>	Sensible	W	1 700	1 990	3 440
	Total	W	2 040	2 460	4 420
Heating capacity <sup>(2)</sup>		W	2 750	3 320	5 640
Water flow		l/h	351	423	760
Water pressure drop	Cooling	kPa	18	20	50
	Heating	kPa	16	17	43
Heating capacity <sup>(3)</sup>		W	4 650	5 610	9 470
Airflow		m <sup>3</sup> /h	440	433	860
Sound power level <sup>(4)</sup>		dB(A)	54	54	61
Sound pressure level at 2,5 m <sup>(5)</sup>		dB(A)	38	38	45

Nominal measurement conditions: Maximum speed - Unit not connected (ESP = 0 Pa)

(1) Cooling: Water inlet temperature: 7°C; water outlet temperature: 12°C; air inlet temperature: 27°C D.B - 19°C W.B

(2) Heating: Water inlet temperature: 50°C; water flow rate as in cooling mode; air inlet temperature: 20°C

(3) Heating: Water inlet temperature: 70°C; water outlet temperature: 60°C; air inlet temperature: 20°C

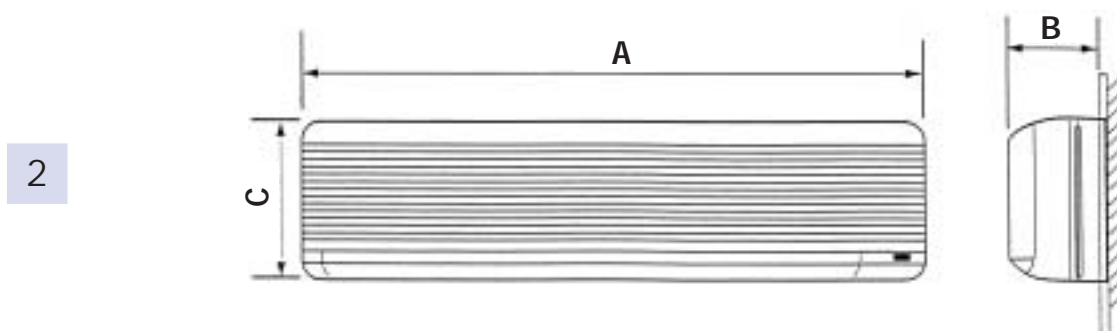
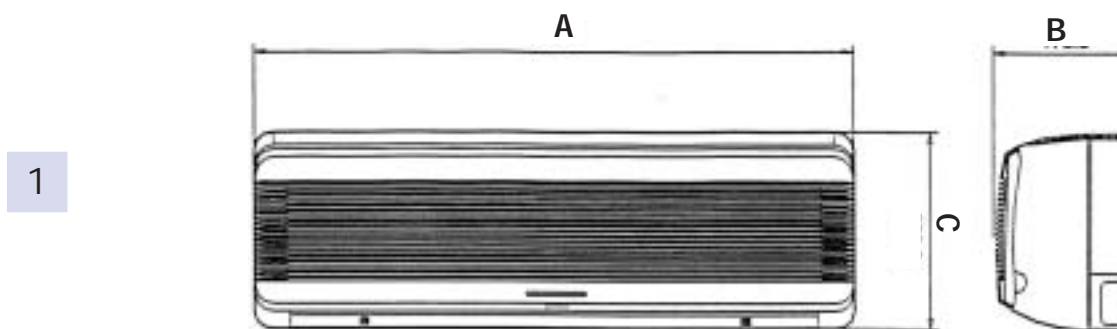
(4) Sound power level: according to ISO 23741

(5) Sound pressure level: in semi-reverberating field

HD 2 → 4 kW



▣ PHYSICAL DATA



COMFAIR	HD	1	2	3
<b>View</b>		<b>1</b>	<b>1</b>	<b>2</b>
A	mm	795	795	1 200
B	mm	178	178	210
C	mm	270	270	320
Net weight	kg	8	9	13





## ■ OTHER FAN COIL UNITS AVAILABLE IN OUR RANGE (PLEASE CONSULT US):

### ■ QUANTUM LC (3 to 9 kW)



The Quantum LC is a "high-pressure fan coil" for conditioning, filtering and fresh air supply. It can be fitted in a false ceiling or in a raised floor. It can therefore be maintained outside the conditioned areas, by means of hinged panels which facilitate access to the filter and fan. Its distinctive feature is the small overall size and the presence of an electrical control system allowing up to 27 different fan speeds.

The Quantum LC is available in the following versions:

- **LC xx 3C** with three-sets of cooling coils (resistance heater optional)
- **LC xx 4C** with four-sets of cooling coils (resistance heater optional)
- **LC xx 3C/1H** with three-sets of cooling coils and one set of heating coils
- **LC xx 4C/1H** with four-sets of cooling coils and one set of heating coils

### ■ QUANTUM ZL (3 to 7 kW)



The standard unit is made in one piece, without a cabinet, and consists of a removable filter, a fan, cooling and/or heating coils, a condensate tray and an electrical terminal board.

The casing is made from galvanized sheet steel, minimum sheet thickness 0.8 mm, thickness of supporting structure 1.0 mm.

- QUANTUM U (3 to 7 kW)



The Quantum U is a "high-pressure fan coil" for conditioning, filtering and fresh air supply for offices from 25 to 50 m<sup>2</sup>. It can be fitted in a false ceiling or in a raised floor in the circulation areas of rooms. It can therefore be maintained outside the conditioned areas, by means of hinged panels which facilitate access to the filter and fan.



**BELGIUM,  
LUXEMBOURG :** LENNOX BENELUX N.V./S.A.  
tel. : + 32 3 633 30 45  
fax : + 32 3 633 00 89  
e-mail : info.be@lennoxbenelux.com

**CZECH REPUBLIC :** JANKA LENNOX a.s.  
tel. : + 420 2 510 88 111  
fax : + 420 2 579 10 393  
e-mail : janka@janka.cz

**FRANCE :** LENNOX FRANCE  
tel. : + 33 1 64 76 23 23  
fax : + 33 1 64 76 35 75  
e-mail : marketing.france@lennoxfrance.com

**GERMANY :** LENNOX DEUTSCHLAND GmbH  
tel. : + 49 69 42 09790  
fax : + 49 69 42 09 79 40  
e-mail : info.de@lennoxdeutschland.com

**NETHERLANDS :** LENNOX BENELUX B.V.  
tel. : + 31 33 2471 800  
fax : + 31 33 2459 220  
e-mail : info@lennoxbenelux.com

**POLAND :** LENNOX POLSKA Sp. z o.o.  
tel. : + 48 22 832 26 61  
fax : + 48 22 832 26 62  
e-mail : info@lennoxpolska.pl

**PORTUGAL :** LENNOX PORTUGAL LDA.  
tel. : +351 22 998 33 70  
fax : +351 22 998 33 79  
e-mail : info@lennoxportugal.com

**RUSSIA :** LENNOX DISTRIBUTION MOSCOW  
tel. : + 7 095 246 07 46  
fax : + 7 502 933 29 55  
e-mail : lennox.dist.moscow@netmaster.ru

**SLOVAKIA :** LENNOX SLOVENSKO s.r.o.  
tel. : + 421 2 44 87 19 27  
fax : + 421 2 44 88 64 72  
e-mail : lennox.slovensko@lennox.sk

**SPAIN :** LENNOX REFAC S.A.  
tel. : + 34 915 40 18 10  
fax : + 34 915 42 84 04  
e-mail : marketing@lennox-refac.com

**UKRAINE :** LENNOX DISTRIBUTION KIEV  
tel. : + 380 44 213 14 21  
fax : + 380 44 213 14 21  
e-mail : jankauk@uct.kiev.ua

**UNITED KINGDOM ,  
IRELAND :** LENNOX INDUSTRIES LTD  
tél. : + 44 1604 599400  
fax : + 44 1604 594200  
e-mail : ukmarketing@lennoxind.com

**OTHER EUROPEAN COUNTRIES,  
AFRICA,  
MIDDLE-EAST :** LENNOX DISTRIBUTION  
tel. : + 33 4 72 23 20 14  
fax : + 33 4 72 23 20 28  
e-mail : marketing@lennoxdist.com



**LENNOX®**

[www.lennox europe.com](http://www.lennox europe.com)

**COMFAIR-PCA-0903-E**

Due to Lennox's ongoing commitment to quality, Specifications, Ratings and Dimensions subject to change without notice and without incurring liability. Improper installation, adjustment, alteration, service or maintenance can cause property damage or personal injury. Installation and service must be performed by a qualified installer and servicing agency.