

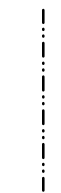
0 5 10 15 20 25 30 35 40 45 50 55 60 65 70 75 80 85 90 95

INDICE	
REGLETERO CONEXIONES ELECTRICAS TERMINAL STRIP BORNIER DE CONNEXION ELECTRIQUE KLEMMLEISTE	HOJA 1/5
CIRCUITO POTENCIA POWER CIRCUIT CIRCUIT DE PUISSANCE STROMKREIS	HOJA 2/5
CIRCUITO MANIOBRA CONTROL CIRCUIT CIRCUIT DE CONTROL STUEERKREIS	HOJA 3/5
CONEXION OPCIONALES OPTIONS CONNEXIONS OPTIONNELS OPTIONEN / ZUBEHÖR	HOJA 4/5
LEYENDA REFERENCIAS REFERENCES LEGEND REFERENCE DE LEGENDE LEGENDE	HOJA 5/5



ESQUEMA ELECTRICO
WIRING DIAGRAM
SCHEMA ELECTRIQUE
SCHALTPLAN

Elemento Opcional
Optional Element
Element optionnel
Optionales bauteil



A realizar por el instalador
To wire by the installer
A câbler par l'installateur
Verdrahtung durch den installateur



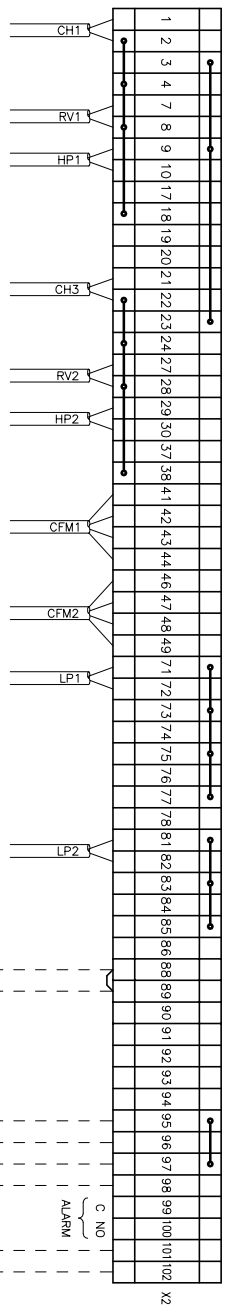
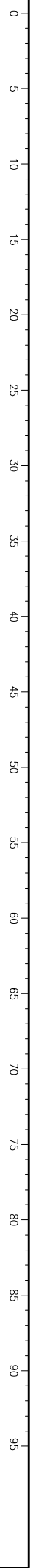
5%

Lemnox Refrac S.A.

ESQUEMA ELECTRICO
ELECTRIC DIAGRAM

KSHM 52D-64D-76D-86D

4Z-33-415-317 10J
3N ~ 400V 50Hz + PE



ON/OFF REMOTO
REMOTE ON/OFF

ETAPA 1
STAGE 1

FRIO/CALOR
COOL/HEAT

ETAPA 2
STAGE 2

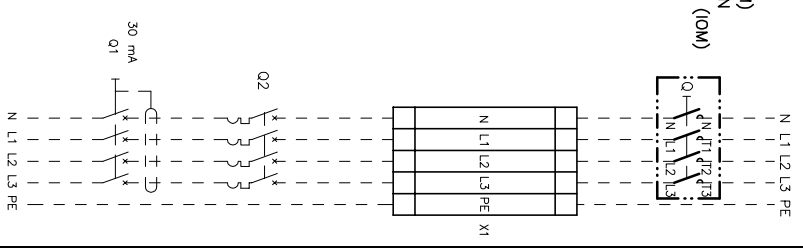
C NO

ALARM

⚠ RETIRAR PUNTE SI SE MONTA ON/OFF REMOTO
REMOVED LINK FOR REMOTE ON/OFF OPERATION
RETIRER LE PONT EN CAS DE MARCHE/ARRÊT A DISTANCE
ENTFERNE DIE VERBINDUNG ZUM EIN/AUS FERNSCHALTER

⚠ ESTAS BORNAS SOLAMENTE SE INCLUYEN CON SU OPCIONAL
THESE TERMINALS ARE ONLY INCLUDED WITH ITS OPTIONAL
CES CONTACTS SONT INSTALLEES SEULEMENT SI ON DEMANDE CHOISIT L'OPTIONAL
DIESE ANSCHLUSSKLEMMEN SIND NUR MIT ZUBEHÖR VERFÜGBAR IHREM OPTIONAL

VER MANUAL INSTALACION
SEE INSTALLATION MANUAL (IOM)
VOIR LE MANUEL D'INSTALLATION
SIEHE INSTALLATIONSHANDBUCH (IOM)



Elemento Opcional
Optional Element
Element optionnel
Optionales bauteil

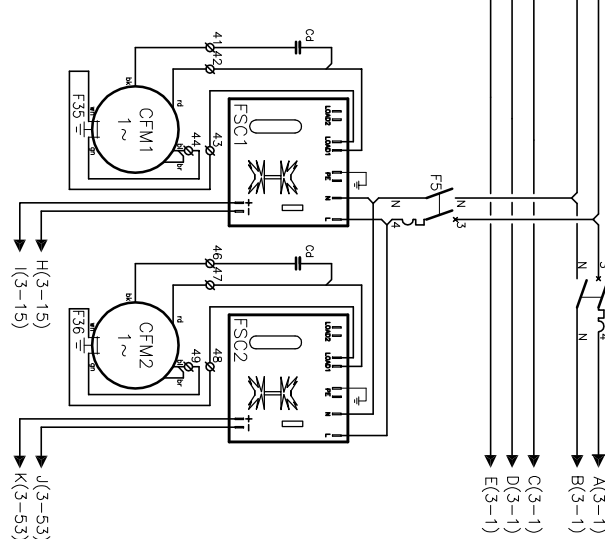
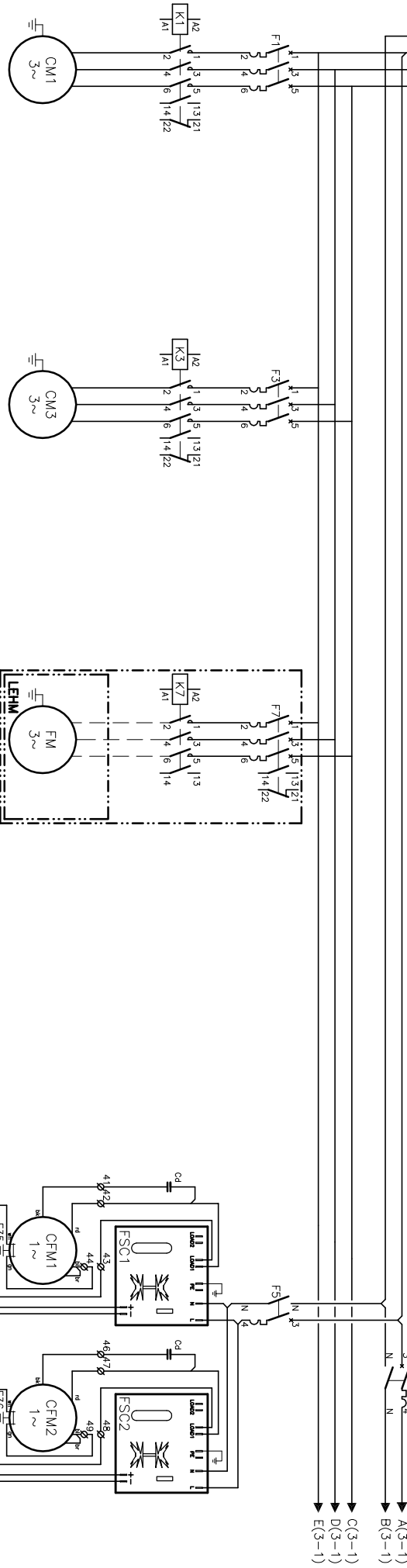
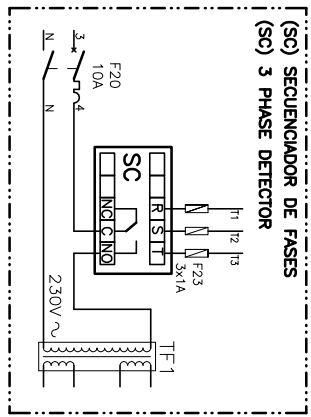
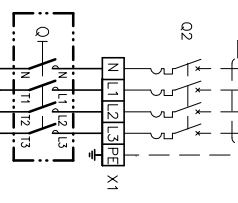
A realizar por el instalador
To wire by the installer
A câbler par l'installateur
Verdrahtung durch den installateur

1/5	Lemnox Refrac S.A.	ESQUEMA ELECTRICO ELECTRIC DIAGRAM	KSHM 52D-64D-76D-86D	4Z-33-415-317 10J 3N ~ 400V 50Hz + PE
------------	--------------------	---------------------------------------	-----------------------------	--

ALIMENTACION
POWER SUPPLY
ELECTRIQUE
STROMZULEITUNG

0 5 10 15 20 25 30 35 40 45 50 55 60 65 70 75 80 85 90 95

3N~400V 50Hz+PE
 N L1 L2 L3 PE
 VER MANUAL INSTALACION
 SEE INSTALLATION MANUAL (OM)
 VOIR LE MANUEL D'INSTALLATION
 SIEHE INSTALLATIONSHANDBUCH (OM)



- CIRCUITO MANIOBRA
- CONTROL CIRCUIT
- CIRCUIT DE CONTROL
- STEUERKREIS

KSHM	ln(Icc)	21A	6,48A	3A	3A
52D	Iq(LRA)	111A	35,6A	12A	12A
	F	25A	6,10A	10A	10A
KSCM	ln(Icc)	22A	6,48A	3,4A	3,4A
64D	Iq(LRA)	118A	35,6A	13,2A	13,2A
	F	25A	6,10A	10A	10A
KSCM	ln(Icc)	25,6A	8,6A	3,4A	3,4A
76D	Iq(LRA)	158A	60,2A	13,2A	13,2A
	F	32A	6,10A	10A	10A
KSCM	ln(Icc)	31A	11,1A	3,4A	3,4A
86D	Iq(LRA)	198A	81A	13,2A	13,2A
	F	32A	9,14A	10A	10A

Elemento Opcional
 Optional Element
 Element optionnel
 Opcionales bauteil

A realizar por el instalador
 To wire by the installer
 A câbler par l'installateur
 Verdrahtung durch den Installateur

2/5
 Lemnox Refrac S.A.

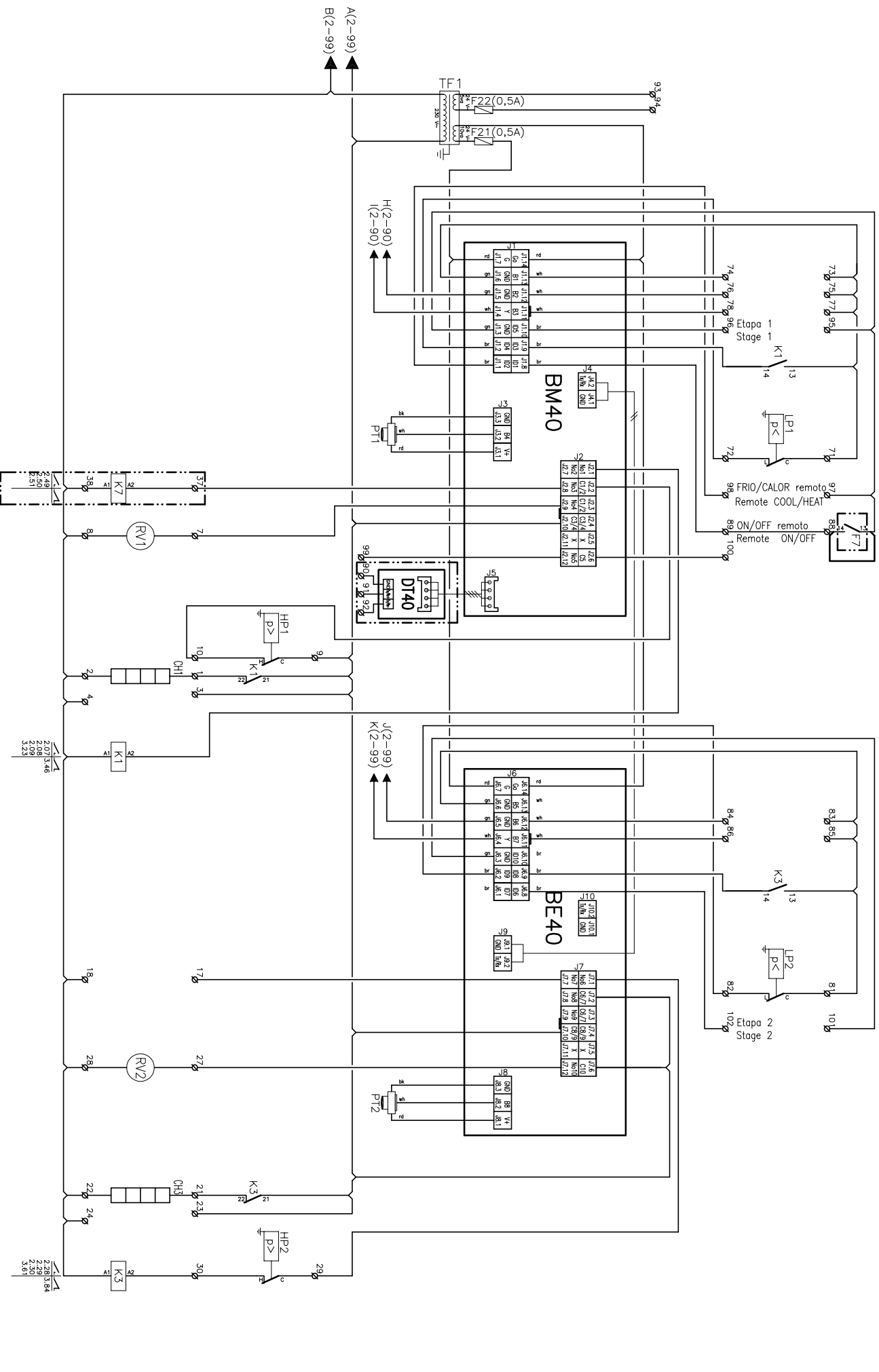
ESQUEMA ELECTRICO
 ELECTRIC DIAGRAM

KSHM 52D-64D-76D-86D

4Z-33-415-317 10U
 3N ~ 400V 50Hz + PE

0 5 10 15 20 25 30 35 40 45 50 55 60 65 70 75 80 85 90 95

RETIRAR PUENTE CON OPCIONAL
REMOVE LINK WITH OPTIONAL



Elemento Opcional
Optional Element
Element optionel
Optionales bauteil

A realizar por el instalador
To wire by the installer
A cobrir por l'instalador
Verdrahtung durch den installateur

3/5
Lemnox Refrac S.A.

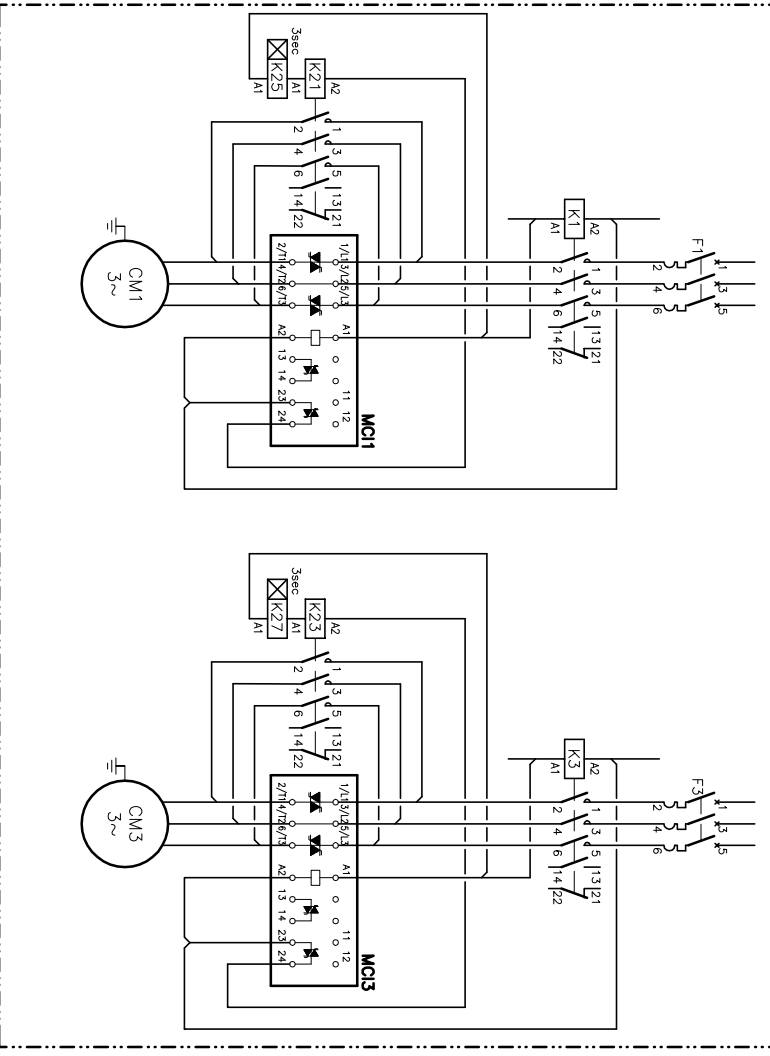
ESQUEMA ELECTRICO
ELECTRIC DIAGRAM

KSHM 52D-64D-76D-86D

4Z-33-415-317 10U
3N ~ 400V 50Hz + PE

0 5 10 15 20 25 30 35 40 45 50 55 60 65 70 75 80 85 90 95

(SFS) SOFT STARTED



Elemento Opcional
 Optional Element
 Element optionnel
 Optionales bauteil

A realitzar por el instalador
 To wire by the installer
 A câbler par l'installateur
 Verdrahtung durch den installateur

4/5

Lemnox Refrac S.A.

ESQUEMA ELECTRICO
 ELECTRIC DIAGRAM

KSHM 52D-64D-76D-86D

4Z-33-415-317 10J
 3N ~ 400V 50Hz + PE

