

Document list

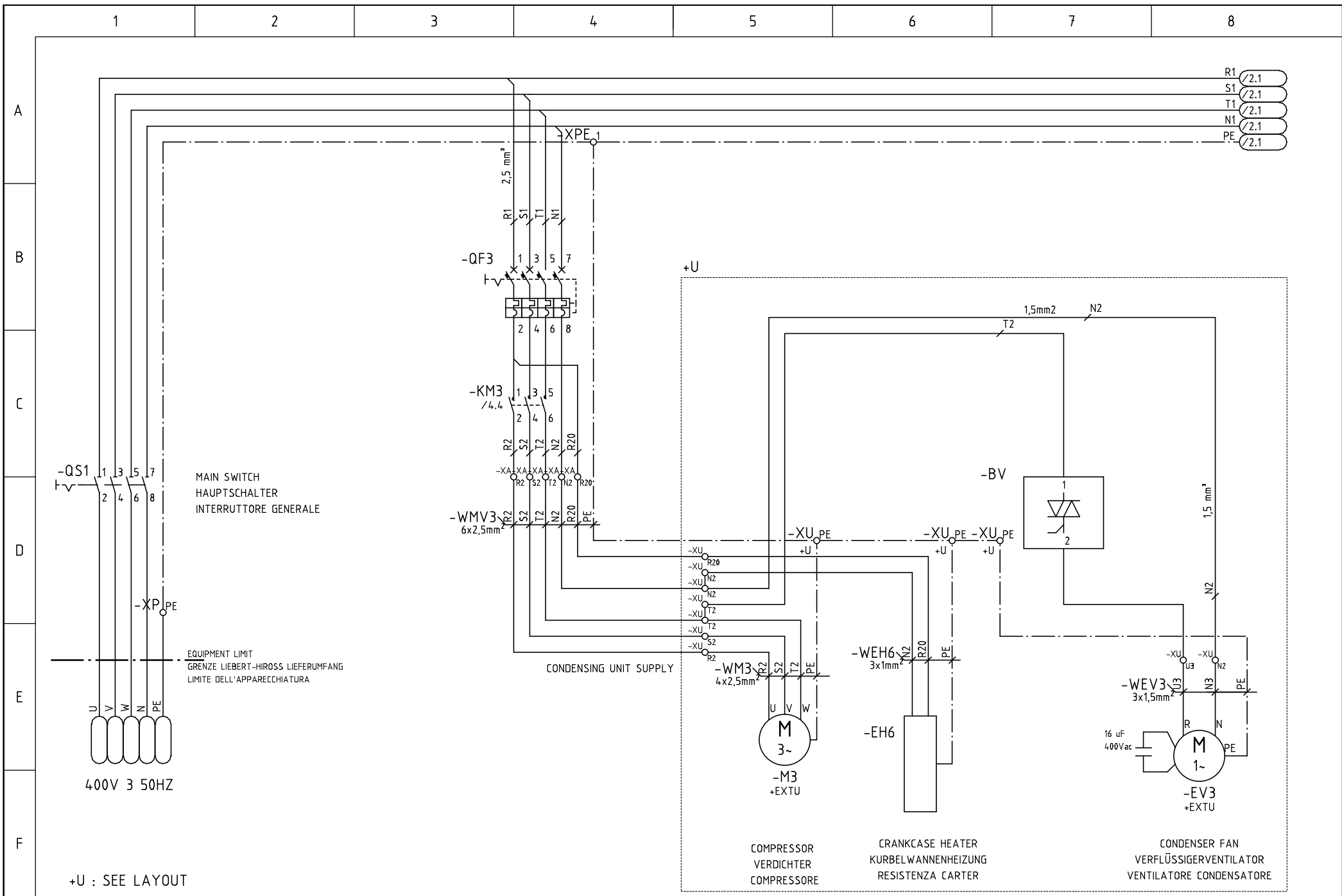
	Document type	Sheet	Description	Rev.
A	0 COVER	1	Document list	
	1 WIRING DIAGRAM	1	WIRING DIAGRAM	
	1 WIRING DIAGRAM	2	WIRING DIAGRAM	
	1 WIRING DIAGRAM	3	WIRING DIAGRAM	
	1 WIRING DIAGRAM	4	WIRING DIAGRAM	
	1 WIRING DIAGRAM	5	WIRING DIAGRAM	
	1 WIRING DIAGRAM	6	WIRING DIAGRAM	
	1 WIRING DIAGRAM	7	WIRING DIAGRAM	
	1 WIRING DIAGRAM	8	WIRING DIAGRAM	
B	1 WIRING DIAGRAM	9	WIRING DIAGRAM	
	1 WIRING DIAGRAM	10	WIRING DIAGRAM	
	1 WIRING DIAGRAM	11	WIRING DIAGRAM	
	2 LAYOUT	1	WIRING DIAGRAM	
	2 LAYOUT	2	WIRING DIAGRAM	
	2 LAYOUT	3	WIRING DIAGRAM	
	3 COMPONENT LIST	1	COMPONENT LIST	
	3 COMPONENT LIST	2	COMPONENT LIST	
	3 COMPONENT LIST	3	COMPONENT LIST	
C	4 TERMINAL BLOCK	1	TERMINAL BLOCK	
	4 TERMINAL BLOCK	2	TERMINAL BLOCK	
	4 TERMINAL BLOCK	3	TERMINAL BLOCK	
	4 TERMINAL BLOCK	4	TERMINAL BLOCK	
	5 TERMINAL LIST	1	TERMINAL LIST	
	6 CABLE LIST	1	CABLE LIST	
	7 REVISION INDEX	1	REVISION INDEX	
D				
E				
F				

Wire Colour Code		WIRE SECTION NOT MENTIONED
BLACK	Power	1,5mm ²
RED	AUXILIARY 24VAC	1mm ²
BLUE	AUXILIARY 48VDC	1mm ²
GREY	AUXILIARY 230VAC	1,5mm ²
YELLOW/GREEN	Earth	USERCOMPLIANT

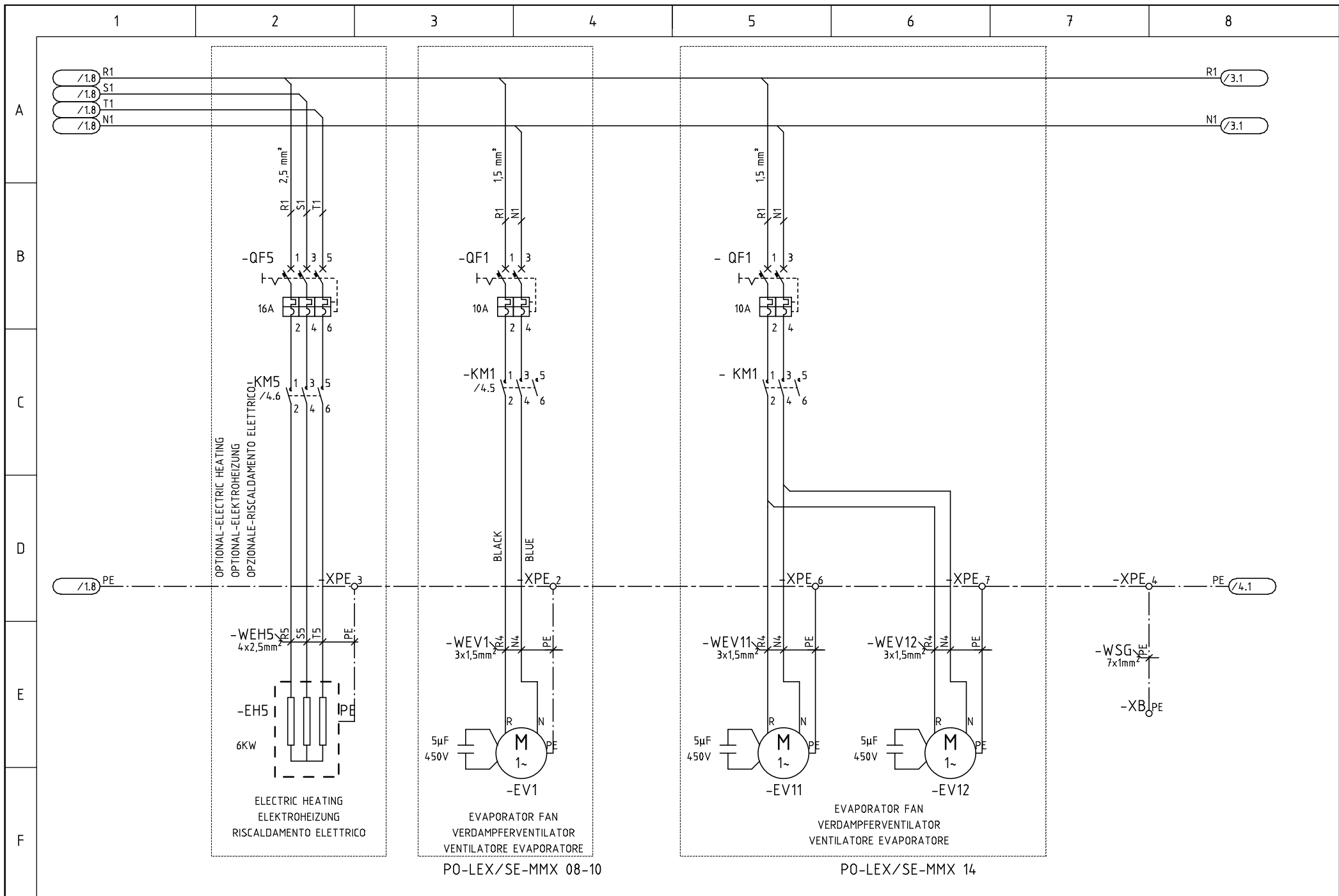
Reference code: /3 .6

Sheet ←
→ Column

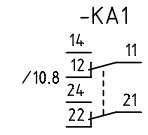
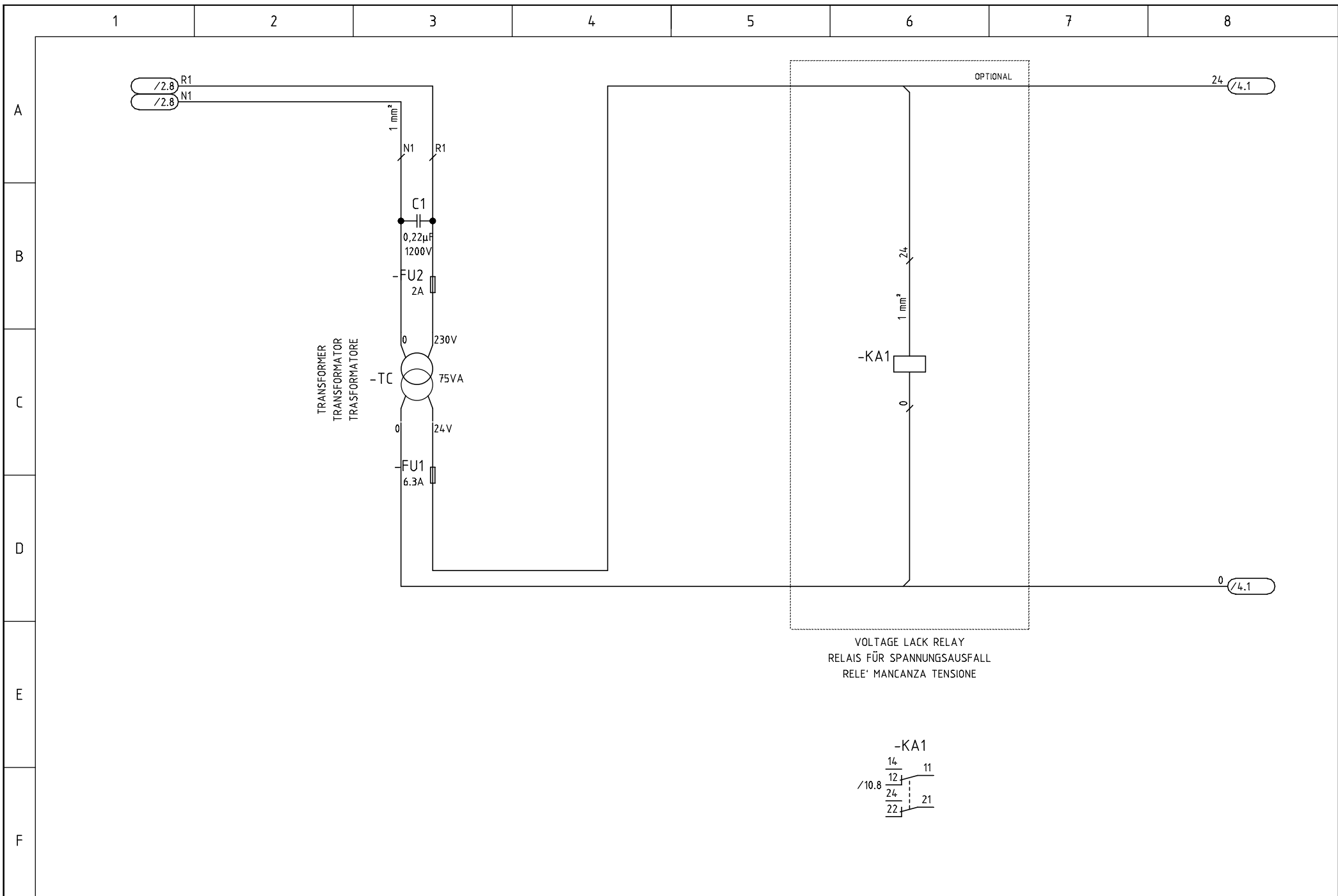
Customer:
Order:
Supply: 400 V 50 Hz
Auxiliary circuits: 24 V
NOTE 1:
NOTE 2
NOTE 3



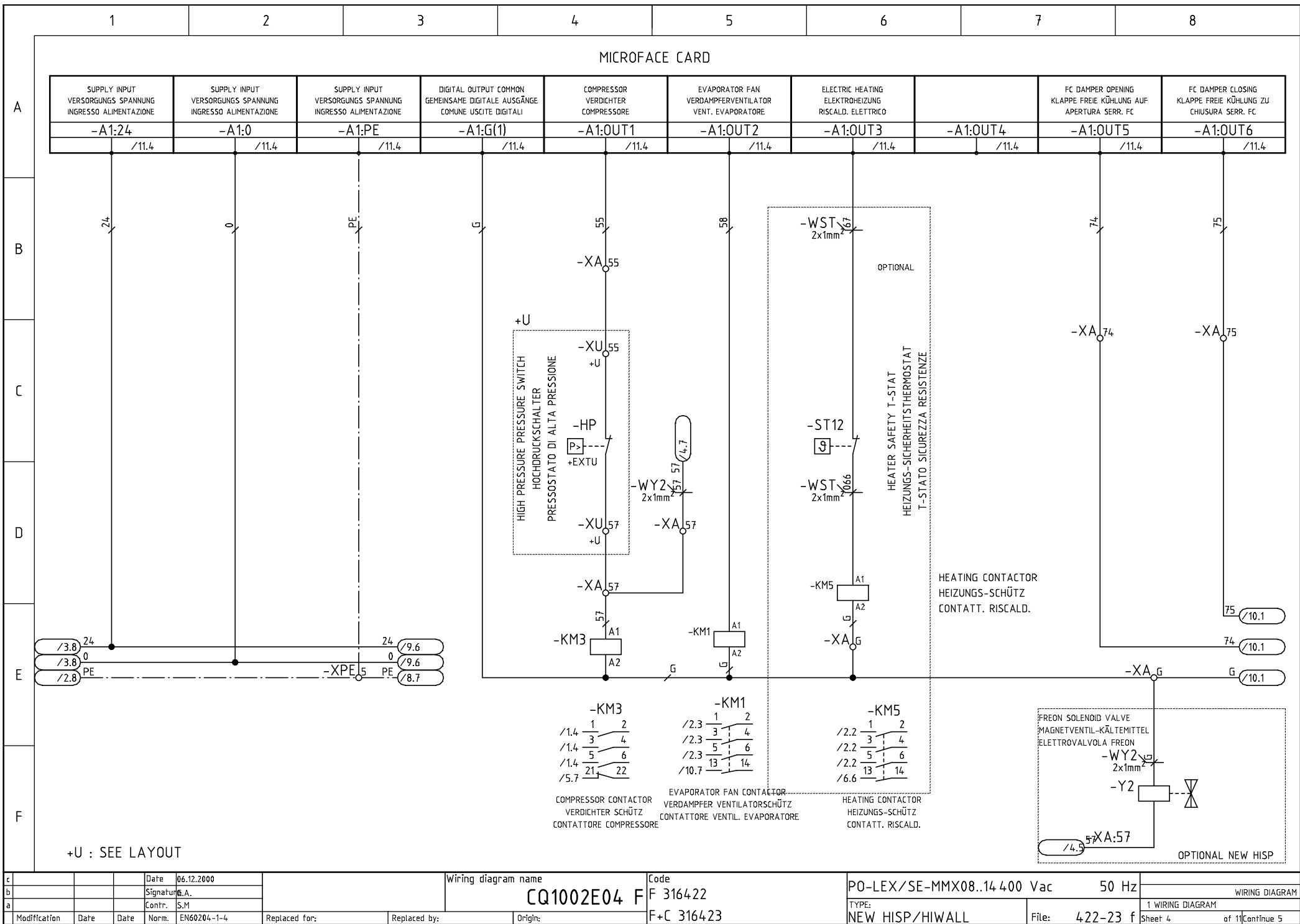
c	Date	06.12.2000	Wiring diagram name	Code	PO-LEX/SE-MMX08..14 400 Vac	50 Hz	WIRING DIAGRAM
b	Signature	G.A.	CQ1002E04 F	F 316422	TYPE:	NEW HISP/HIWALL	1 WIRING DIAGRAM
a	Contr.	S.M		F+C 316423	File:	4.22-23 f	Sheet 1 of 11 Continue 2
	Modification	Date	Norm.	EN60204-1-4	Replaced for:	Replaced by:	Origin:



c	Date	06.12.2000	Wiring diagram name	Code	PO-LEX/SE-MMX08..14 400 Vac	50 Hz	WIRING DIAGRAM
b	Signature	G.A.	CQ1002E04 F	F 316422	TYPE:	NEW HISP/HIWALL	1 WIRING DIAGRAM
a	Contr.	S.M	F+C 316423	F+ C 316423	File:	4.22-23 f	Sheet 2 of 11 Continue 3
Modification	Date	Date	Norm.	EN60204-1-4	Replaced for:	Replaced by:	Origin:



c		Date	06.12.2000	Wiring diagram name	CQ1002E04 F	Code	F 316422	PO-LEX/SE-MMX08..14 400 Vac	50 Hz	
b		Signature	G.A.							WIRING DIAGRAM
a		Contr.	S.M							1 WIRING DIAGRAM
Modification	Date	Date	Norm.	EN60204-1-4	Replaced for:	Replaced by:	Origin:	F+C 316423	TYPE:	NEW HISP/HIWALL
									File:	4.22-23 f
										Sheet 3 of 11 Continue 4

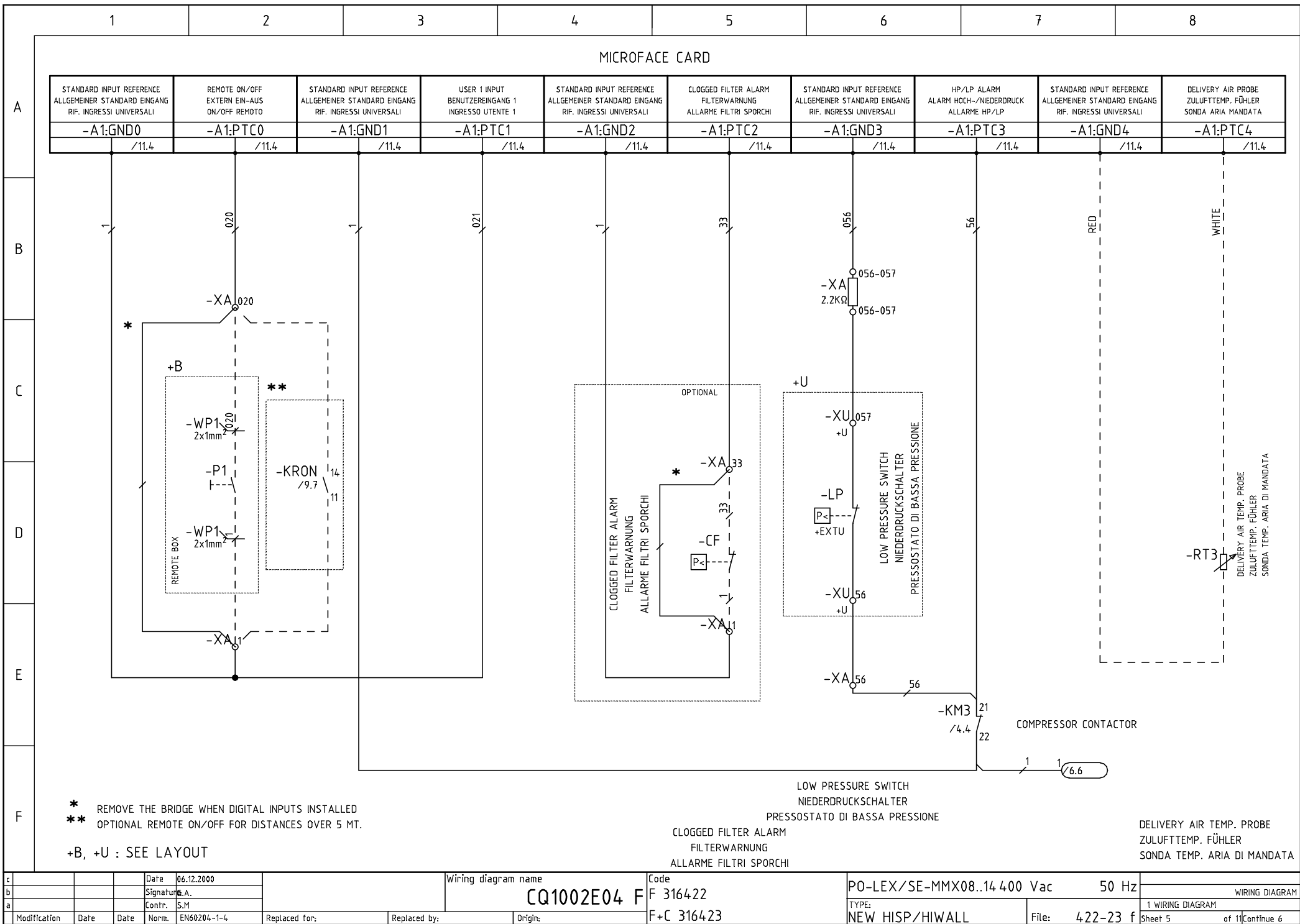


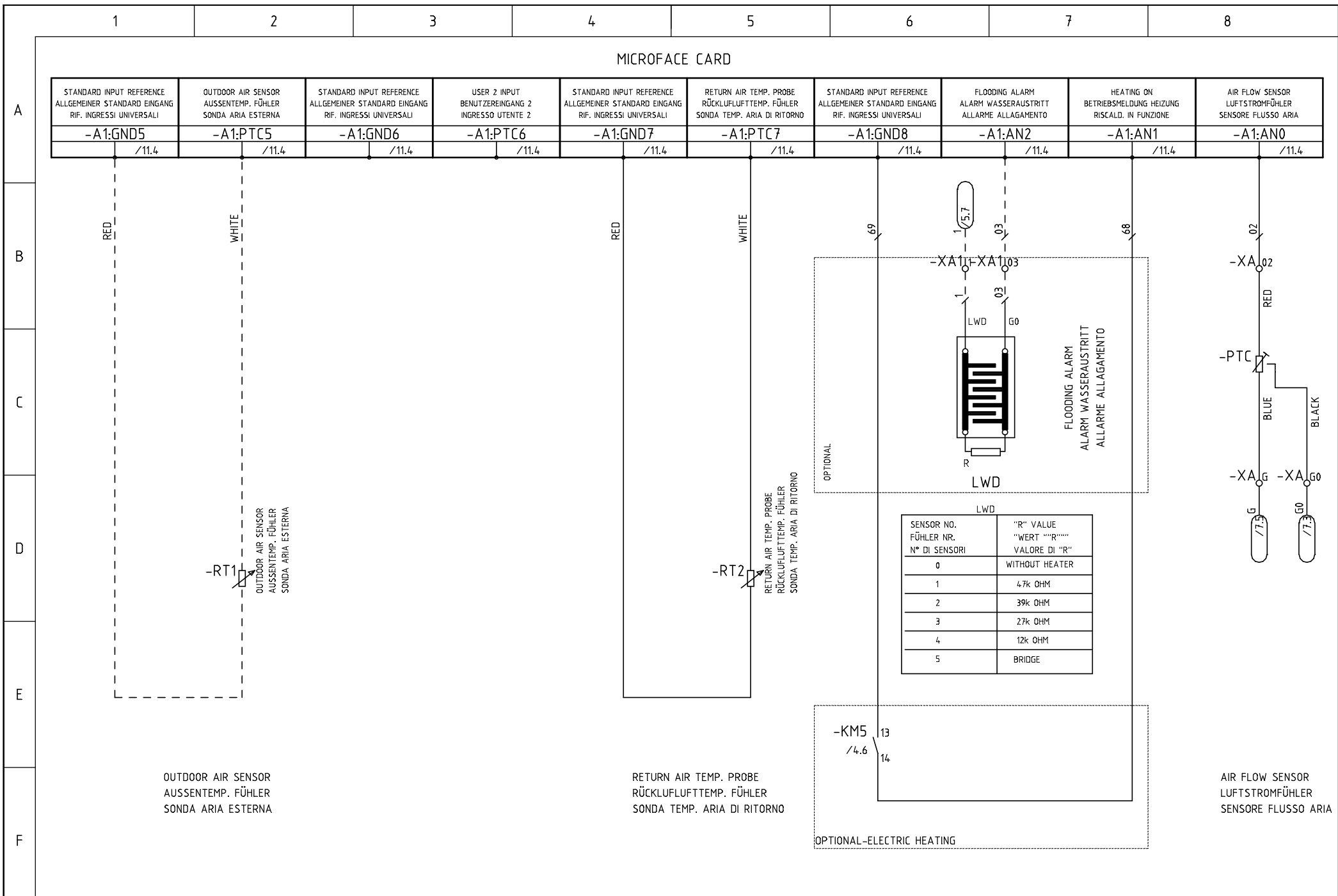
c	Date	06.12.2000
b	Signature	G.A.
a	Contr.	S.M

Wiring diagram name		Code
CQ1002E04 F		F 316422
Replaced for:		F+C 316423

PO-LEX/SE-MMX08..14 400 Vac		50 Hz
TYPE:		NEW HISP/HIWALL
File:	4.22-23 f	Sheet 4 of 11

WIRING DIAGRAM
1 WIRING DIAGRAM





MICROFACE CARD

A

	STANDARD INPUT REFERENCE ALLGEMEINER STANDARD EINGANG RIF. INGRESSI UNIVERSALI	ANALOG OUTPUT REFERENCE ALLGEMEINER ANALOGAUSGANG RIF. USCITE ANALOGICHE	ALARM CARD ALARM-KARTE SCHEDE ALLARMI	EVAP. FAN ADJUST. VENTILATOR DRENZAHLEINSTELLUNG REGOLAZ. VENTIL. EVAP.	ANALOG OUTPUT REFERENCE ALLGEMEINER ANALOGAUSGANG RIF. USCITE ANALOGICHE	GENERAL WARNING SAMMEL WARNUNG AVVISO GENERALE	GENERAL WARNING SAMMEL WARNUNG AVVISO GENERALE	GENERAL WARNING SAMMEL WARNUNG AVVISO GENERALE
-A1:CLOCK	-A1:GND9	-A1:G0(2)	-A1:PWM1	-A1:PWM0	-A1:G(2)	-A1:ONA	-A1:OC	-A1:ONC
/11.4	/11.4	/11.4	/11.4	/11.4	/11.4	/11.4	/11.4	/11.4

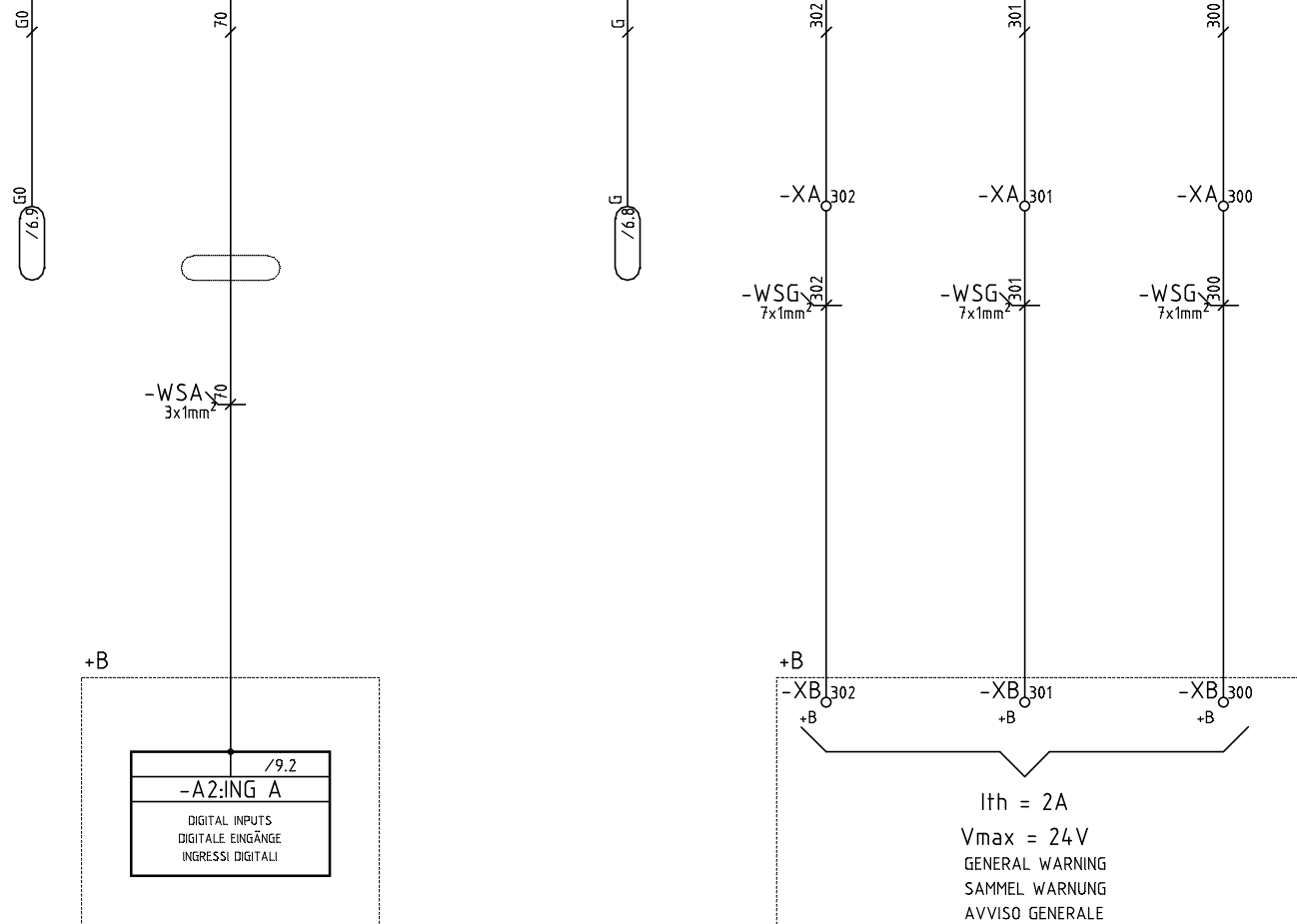
B

C

D

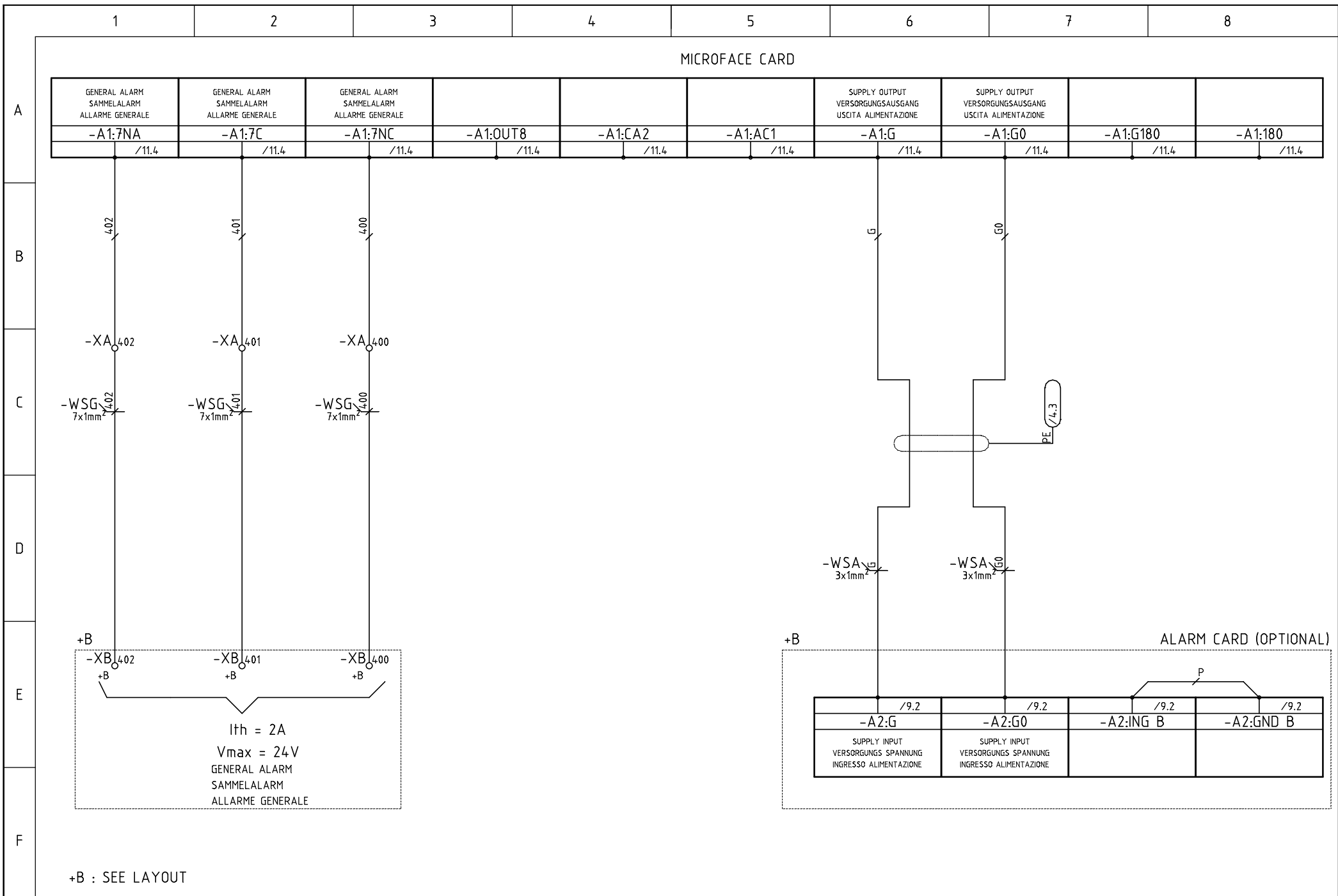
E

F



ALARM CARD (OPTIONAL)

+B : SEE LAYOUT



c	Date	Date	06.12.2000
b	Signature	G.A.	
a	Contr.	S.M	
Modification	Date	Norm.	EN60204-1-4
Replaced for:	Replaced by:	Origin:	
Wiring diagram name			
CQ1002E04 F			
Code		F 316422	
Code		F+C 316423	
PO-LEX/SE-MMX08..14 400 Vac		50 Hz	
TYPE:		NEW HISP/HIWALL	
File:		4.22-23 f	
Sheet 8		of 11	
Continue 9			

1

2

3

4

5

6

7

8

A

B

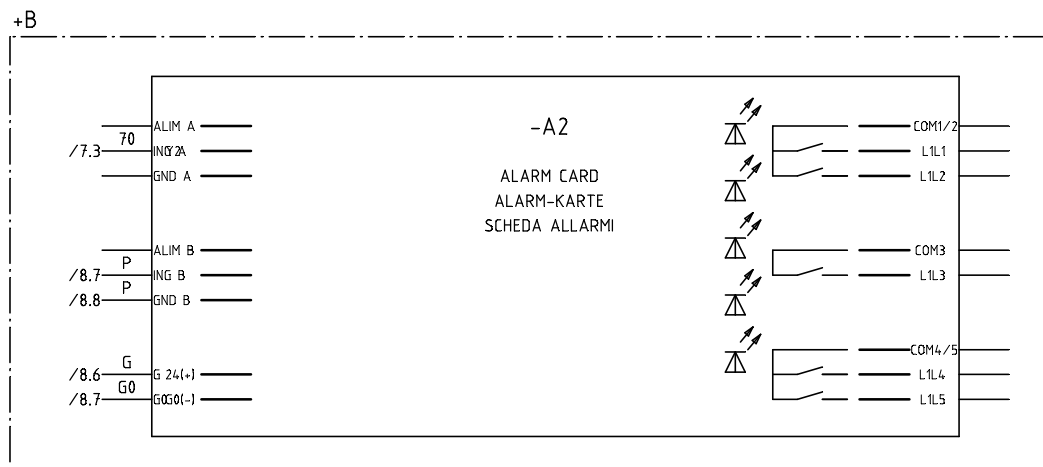
C

D

E

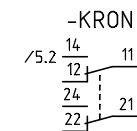
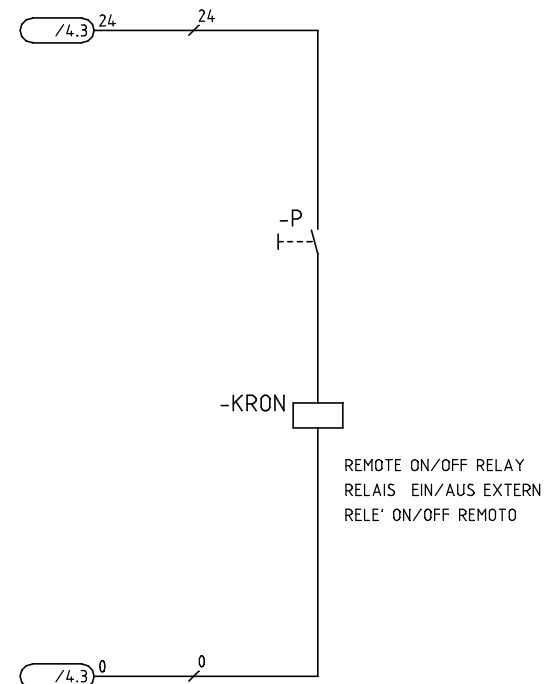
F

ALARM CARD OPTIONAL
ALARM-KARTE OPTIONAL
SCHEDA ALLARMI OPTIONAL



N° 5 ALARM SIGNAL OUTPUTS
THE CONNECTIONS MUST BE MADE DIRECTLY ON THE ALARM CARD

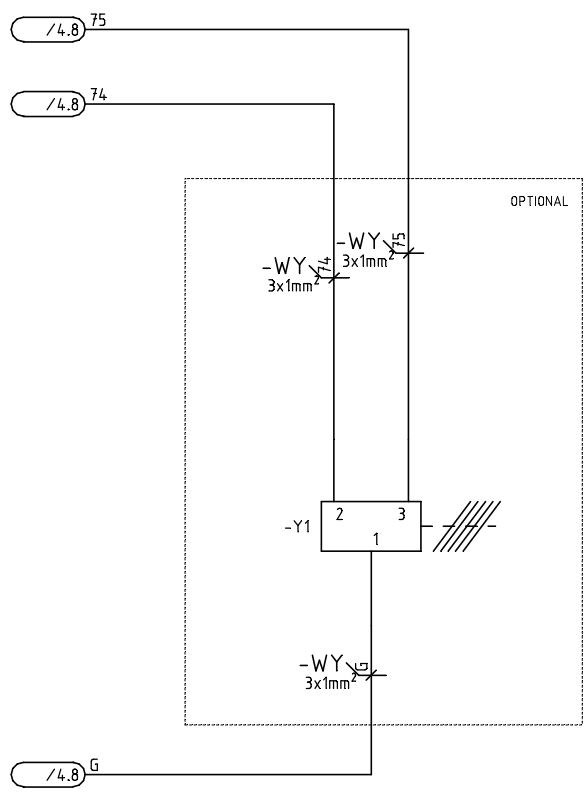
OPTIONAL REMOTE ON/OFF FOR DISTANCES OVER 5 MT.
(TO BE ARRANGED BY THE INSTALLER
SEE FEATURES IN THE COMPONENT LIST)



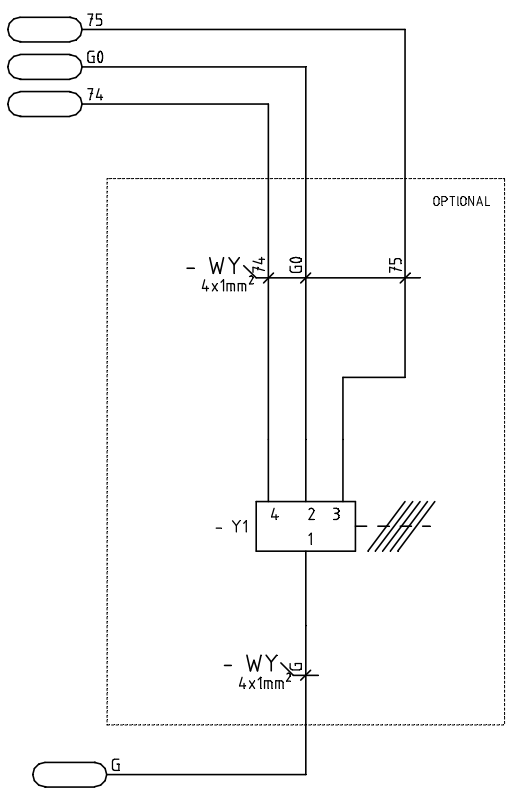
c		Date	06.12.2000	Wiring diagram name	Code	PO-LEX/SE-MMX08..14 400 Vac	50 Hz	
b		Signature	G.A.	CQ1002E04 F	F 316422			WIRING DIAGRAM
a		Contr.	S.M		F+C 316423	TYPE:	NEW HISP/HIWALL	File: 4.22-23 f
Modification	Date	Date	Norm.	EN60204-1-4	Replaced for:	Replaced by:	Origin:	1 WIRING DIAGRAM
								Sheet 9 of 11 Continue 10

FREECOOLING SERVOMOTOR

FREECOOLING SERVOMOTOR



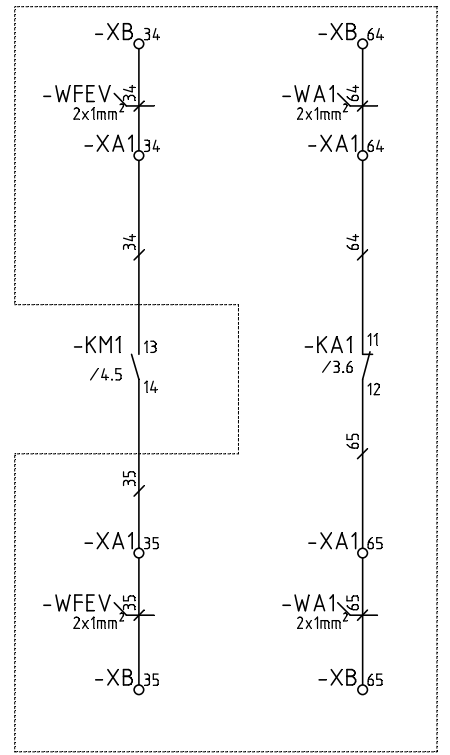
FREECOOLING SERVOMOTOR
"KLAPPEN-STELLMOTOR ""FREIE KÜHLUNG""
SERVOMOTORE FREECOOLING



FREECOOLING SERVOMOTOR
"KLAPPEN-STELLMOTOR ""FREIE KÜHLUNG""
SERVOMOTORE FREECOOLING

SPRING RETURN
RITORNO A MOLLA

TERMINALS INSTALLED AS OPTION BY HIROSS



FAN ON
VENTILATOR BETRIEBSMELDUNG
VENTILATORE IN FUNZIONE

VOLTAGE LACK RELAY
RELAIS FÜR SPANNUNGSAusFALL
RELE' MANCANZA TENSIONE

1

2

3

4

5

6

7

8

A

B

C

D

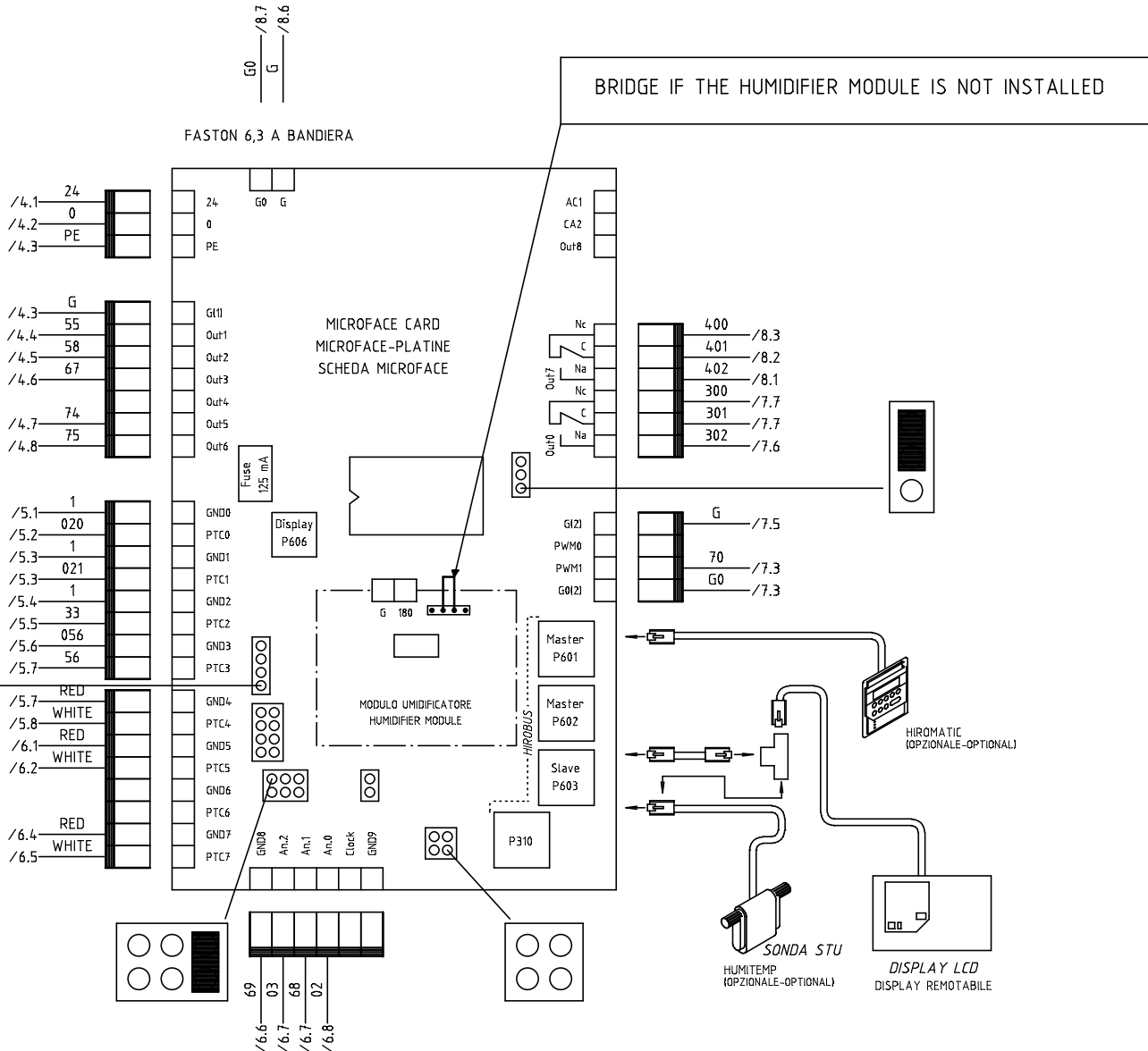
E

F

MICROFACE PART NUMBER 275297

N.B.
 N° 1 CONNETTORE 3 VIE RICAVATO DA
 ZETRONIC COD. 94535/9104
 N° 1 CONNETTORE 4 VIE
 ZETRONIC COD. 94535/9104
 N° 2 CONNETTORI 8 VIE
 ZETRONIC COD. 94535/9108
 N° 2 CONNETTORI 6 VIE E
 N° 1 A 7 VIE RICAVATI DA
 ZETRONIC COD. 94535/9108
 CON I FUSIBILI ALLEGARE 10 FASTON
 94518/0201 E N° 1 CONNETTORE 8 VIE
 94535/9108

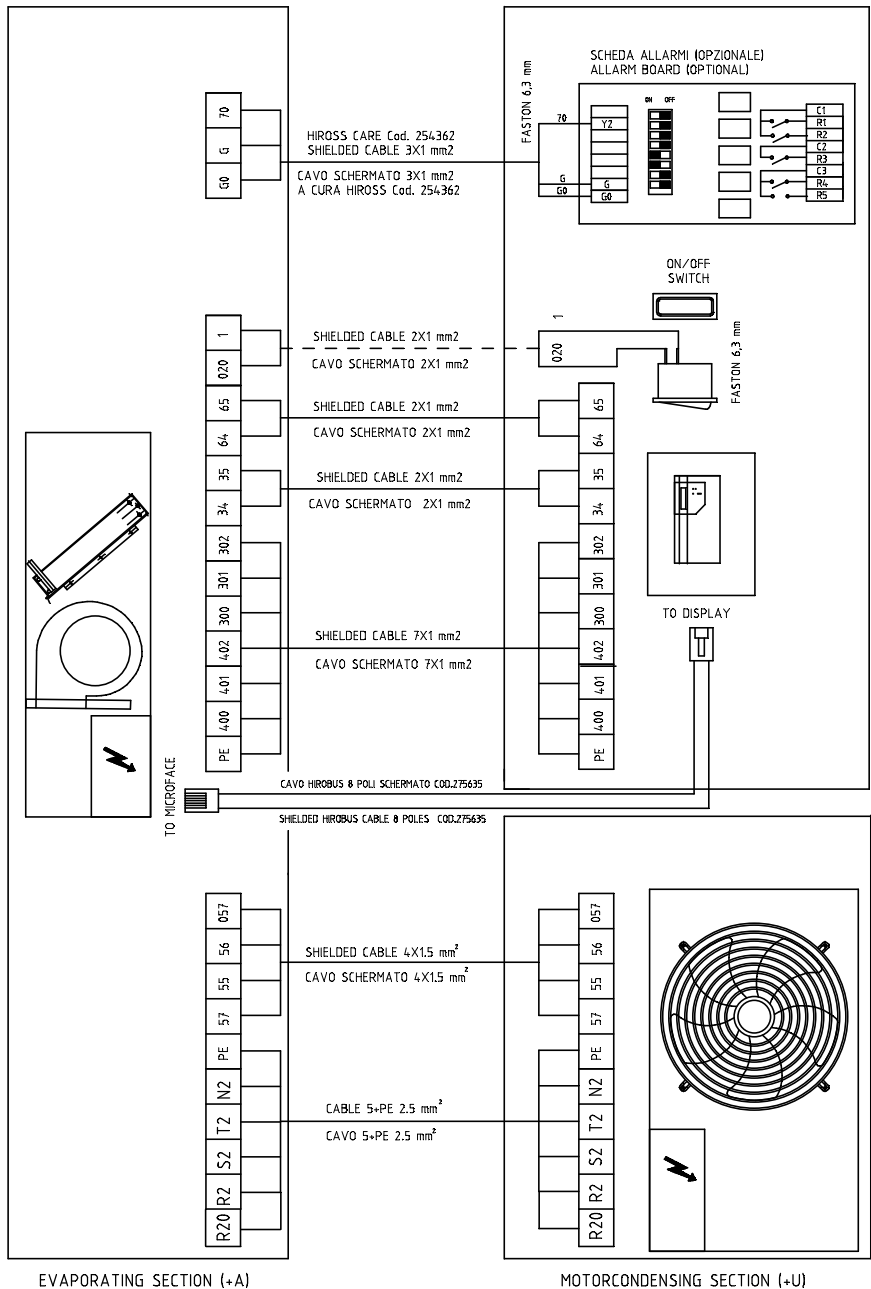
CONFIGURARE I PONTICELLI
 COME INDICATO



c	Date	06.12.2000	Wiring diagram name	Code	PO-LEX/SE-MMX08..14 400 Vac	50 Hz	WIRING DIAGRAM
b	Signature	G.A.	CQ1002E04 F	F 316422	TYPE:	NEW HISP/HIWALL	1 WIRING DIAGRAM
a	Contr.	S.M.	Origin:	F+C 316423	File:	4.22-23 f	Sheet 11 of 11 Continue
Modification	Date	Date	Norm.	EN60204-1-4	Replaced for:	Replaced by:	

SPLIT UNIT - SE.. + SC.. ELECTRICAL CONNECTIONS REMOTE BOX (+B)

A
B
C
D
E
F



c		Date	06.12.2000	Wiring diagram name	Code	PO-LEX/SE-MMX08..14 400 Vac	50 Hz	
b		Signature	G.A.	CQ1002E04 F	F 316422			WIRING DIAGRAM
a		Contr.	S.M.		F+C 316423	TYPE:	NEW HISP/HIWALL	File: 4.22-23 f
Modification	Date	Date	Norm.	EN60204-1-4	Replaced for:	Replaced by:	Origin:	Sheet 2 of 11

1		2		3		4		5		6		7		8	
QUANTITY	ARTICLE CODE	DESCRIPTION				TECHNICAL DATA		CATALOGUE NO.	IDENTIFIER	RE.	MANUFACTURER	HIROSS CODE			
A	9	COMPRESSOR VERDICHTER COMPRESSORE							-M3	/1.5					
		CRANKCASE HEATER KURBELWANNENHEIZUNG RESISTENZA CARTER							-EH6	/1.6					
		EVAPORATOR FAN VERDAMPFERVENTILATOR VENTILATORE EVAPORATORE							-EV1	/2.3					
B		EVAPORATOR FAN VERDAMPFERVENTILATOR VENTILATORE EVAPORATORE							-EV11	/2.5					
		EVAPORATOR FAN VERDAMPFERVENTILATOR VENTILATORE EVAPORATORE							-EV12	/2.6					
		FREON SOLENOID VALVE MAGNETVENTIL-KÄLTEMITTEL ELETTROVALVOLA FREON							-Y2	/4.8					
C		ON/OFF SWITCH EIN/AUS-SCHALTER INTERRUTTORE ON/OFF							-P	/9.7					
		FREECOOLING SERVOMOTOR "KLAPPEN-STELLMOTOR ""FREIE KÜHLUNG"" SERVOMOTORE FREECOOLING							-Y1	/10.2					
D		FREECOOLING SERVOMOTOR "KLAPPEN-STELLMOTOR ""FREIE KÜHLUNG"" SERVOMOTORE FREECOOLING							- Y1	/10.4					
	1	B84.112-B-B110 10A	ANTI-NOISE FILTER ENTSTÖRFILTER FILTRO ANTIDISTURBO		B84.112-B-B110			B84.112-B-B110 10A	-LF1	/1.8	Siemens	254657			
E	1	FE 050-4EA.41NV	CONDENSER FAN VERFLÜSSIGERVERTILATOR VENTILATORE CONDENSATORE						-EV3	/1.8					
	1	FV31S225S 4A	FAN SPEED ADJUSTER DREHZAHLSREGLER VENTILATOR REGOLATORE DI VELOCITA' VENTILATORE		FV31S225S 4A R22A			FV31S225S 4A R22	-BV	/1.7	ALCO	3544.13			
	1	LAD4VE	COMPRESSOR CONTACTOR VERDICHTER SCHÜTZ CONTATTORE COMPRESSORE		LAD4VE			LAD4VE	-KM3	/4.4	TELEMECANIQUE				
F	1	LC1D18B7	COMPRESSOR CONTACTOR VERDICHTER SCHÜTZ CONTATTORE COMPRESSORE		24V AC, 1NA+1NC			LC1D18B7 LS17.10 24	-KM3	/4.4	TELEMECANIQUE AEG				
	2	LC1K0610B72	EVAPORATOR FAN CONTACTOR VERDAMPFER VENTILATORSCHÜTZ CONTATTORE VENTIL. EVAPORATORE		24V AC 50/60Hz, 1NA			LC1K0610B72 LS07.10 24	-KM1	/4.5	TELEMECANIQUE AEG				
c		Date	19.01.2001		Wiring diagram name		Code	F 316422		PO-LEX/SE-MMX08..14 400 Vac 50 Hz		COMPONENT LIST			
b		Signature	G.A.		CQ1002E04 F			F+C 316423		TYPE: NEW HISP/HIWALL		3 COMPONENT LIST			
a		Contr.	S.M							File: 4.22-23 f		Sheet 1 of XX Continue 2			
Modification	Date	Date	Norm.	EN60204-1-4		Replaced for:	Replaced by:	Origin:							

1		2		3		4		5		6		7		8	
QUANTITY	ARTICLE CODE	DESCRIPTION				TECHNICAL DATA		CATALOGUE NO.	IDENTIFIER	RE.	MANUFACTURER	HIROSS CODE			
A		HEATING CONTACTOR HEIZUNGS-SCHÜTZ CONTATT. RISCALD.				24V AC 50/60Hz, 1NA		LC1K0610B72 LS07.10 24	-KM5	/4.6	TELEMECANIQUE AEG				
	1	LWD	FLOODING ALARM ALARM WASSERAUSTRITT ALLARME ALLAGAMENTO				LWD		-LWD	/6.6	HIROSS	275180			
	1	MKPC44/2	CONDENSATORE DI FILTRO FILTER CO				MKPC44/2		-C1	/3.3	ARCOTRONICS	254324			
B	1	OHY8	MAIN KNIFE SWITCH HAUPTSCHALTER INTERRUTTORE SEZIONATORE GENERALE				OHY8		-QS1	/1.1	ABB				
	1	OT32E4+OXY8 TK 40A 4P MD	MAIN KNIFE SWITCH HAUPTSCHALTER INTERRUTTORE SEZIONATORE GENERALE				OT32E4		-QS1	/1.1	ABB TECHNOELECTRIC				
C	1	P33AB-9204	CLOGGED FILTER ALARM FILTERWARNUNG ALLARME FILTRI SPORCHI				P33AB-9204 0.8-6mBar		-CF	/5.5	JOHNSON	354102			
	1	RE/MOS	ELECTRIC HEATING ELEKTROHEIZUNG RISCALDAMENTO ELETTRICO						-EH5	/2.2					
D	1	SF520220	TRANSFORMER PRIMARY FUSE PRIMÄRSICHERUNG TRANSFORMATOR FUSIBILE PRIMARIO TRASFORMATORE				2A F		-FU2	/3.3	OMEGA	254729			
	1	SF520263	AUXILIARY FUSE 24 V SICHERUNG STEUERSTROMKREIS 24 V FUSIBILE AUSILIARI 24V				6.3A F		-FU1	/3.3	OMEGA	254731			
	1	SL0241831000X	ON/OFF SWITCH EIN/AUS-SCHALTER INTERRUTTORE ON/OFF				SL0241831000X		-P1	/5.2	Comelux	255042			
E	1	SN7P4Y2003	AIR FLOW SENSOR LUFTSTROMFÜHLER SENSORE FLUSSO ARIA						-PTC	/6.8					
	3	SN650359	DELIVERY AIR TEMP. PROBE ZULUFTTEMP. FÜHLER SONDA TEMP. ARIA DI MANDATA						-RT3	/5.8					
			OUTDOOR AIR SENSOR AUSSENTEMP. FÜHLER SONDA ARIA ESTERNA						-RT1	/6.2					
F			RETURN AIR TEMP. PROBE RÜCKLUFLUFTTEMP. FÜHLER SONDA TEMP. ARIA DI RITORNO						-RT2	/6.5					
	1	X3 PORTA FASTOM					94535/9104		-X	/11.3	ZETRONIC				

c	Date	19.01.2001	Wiring diagram name		Code	F 316422	PO-LEX/SE-MMX08..14 400 Vac 50 Hz		COMPONENT LIST	
b	Signature	G.A.	CQ1002E04 F		F+C	316423	TYPE:		3 COMPONENT LIST	
a	Contr.	S.M	Origin:		NEW HISP/HIWALL		File: 422-23 f		Sheet 2 of XX Continue 3	
Modification	Date	Date	Norm.	EN60204-1-4	Replaced for:	Replaced by:				

1		2		3		4		5		6		7		8	
QUANTITY	ARTICLE CODE	DESCRIPTION				TECHNICAL DATA		CATALOGUE NO.	IDENTIFIER	RE.	MANUFACTURER	HIROSS CODE			
A	1	X4 PORTA FASTOM	PORTA FASTON		94535/9104			94535/9104	-XCON6	/11.6	ZETRONIC				
	2	X6 PORTA FASTOM	PORTA FASTON		94535/9108			94535/9108	-XCON5	/11.4	ZETRONIC				
			PORTA FASTON		94535/9108			94535/9108	-XCON7	/11.6	ZETRONIC				
B	3	X8 PORTA FASTOM			94535/9108			94535/9108	-XCON2	/11.3	ZETRONIC				
			PORTA FASTON		94535/9108			94535/9108	-XCON3	/11.3	ZETRONIC				
			PORTA FASTON		94535/9108			94535/9108	-XCON4	/11.3	ZETRONIC				
C	2	ZOCOLO X 40.52	VOLTAGE LACK RELAY RELAIS FÜR SPANNUNGS AUSFALL RELE' MANCANZA TENSIONE		95.85.1			95.85.1	-KA1	/3.6	FINDER	000000			
			REMOTE ON/OFF RELAY RELAIS EIN/AUS EXTERN RELE' ON/OFF REMOTO		95.85.1			95.85.1	-KRON	/9.7	FINDER	000000			
	1	40.52 24Vac	VOLTAGE LACK RELAY RELAIS FÜR SPANNUNGS AUSFALL RELE' MANCANZA TENSIONE		40.52 24Vac			40.52 24Vac	-KA1	/3.6	FINDER	256152			
D	1	40.52 24Vdc	REMOTE ON/OFF RELAY RELAIS EIN/AUS EXTERN RELE' ON/OFF REMOTO		40.52 24Vdc			40.52 24Vdc	-KRON	/9.7	FINDER	256159			
	1	51TM3FA	TRANSFORMER TRANSFORMATOR TRASFORMATORE		75VA			17TM3FA	-TC	/3.3	MARINI	255883			
E	1	60F5064	HIGH PRESSURE PRESSURE SWITCH HOCHDRUCKSCHALTER PRESSOSTATO DI ALTA PRESSIONE		60F5064 20-26 Bar			CC 29B 26B	-HP	/4.4	DANFOSS	354179			
	1	60R085B01/02451	HEATER SAFETY T-STAT HEIZUNGS-SICHERHEITSTHERMOSTAT T-STATO SICUREZZA RESISTENZE						-ST12	/4.6					
	1	060F1166	LOW PRESSURE SWITCH NIEDERDRUCKSCHALTER PRESSOSTATO DI BASSA PRESSIONE						-LP	/5.6					
F	2	24268	AUTOMATIC SWITCH EVAPORATOR FAN SICHERUNGSAUTOMAT VERDAMPFERVENTILATOR INTERRUTTORE AUTOMATICO VENTILATORE EVAPORATORE		10A 6KA			24268	-QF1	/2.3	MERLIN GERIN				
c			Date	19.01.2001		Wiring diagram name		Code	F 316422		PO-LEX/SE-MMX08..14 400 Vac 50 Hz		COMPONENT LIST		
b			Signature	G.A.		CQ1002E04 F			F+C 316423		TYPE:		3 COMPONENT LIST		
a			Contr.	S.M					NEW HISP/HIWALL		File: 422-23 f		Sheet 3 of XX Continue 4		
	Modification	Date	Date	Norm.	EN60204-1-4	Replaced for:	Replaced by:	Origin:							

1		2		3		4		5		6		7		8	
QUANTITY	ARTICLE CODE	DESCRIPTION				TECHNICAL DATA		CATALOGUE NO.	IDENTIFIER	RE.	MANUFACTURER	HIROSS CODE			
A		AUTOMATIC SWITCH EVAPORATOR FAN SICHERUNGSAUTOMAT VERDAMPFERVENTILATOR INTERRUTTORE AUTOMATICO VENTILATORE EVAPORATORE				10A 6KA		24268	- QF1	/2.5	MERLIN GERIN				
	1	24284	AUTOMATIC SWITCH ELECTRIC HEATING SICHERUNGSAUTOMAT ELEKTROHEIZUNG INTERRUTTORE AUTOMATICO RISCALDAMENTO ELETTRICO				16A 6KA		24284	-QF5	/2.2	MERLIN GERIN			
	1	24298	AUTOMATIC SWITCH CONDENS. UNIT SUPPLY SICHERUNGSAUTOMAT STROMVERSORGUNG VERFLÜSSIGEREINHEIT INTERRUTTORE AUTOMATICO ALIMENTAZ. UNITA' CONDENS.				16A 6KA		24298	-QF3	/1.4	MERLIN GERIN			
B	1	275148	ALARM CARD ALARM-KARTE SCHEDA ALLARMI							-A2	/9.2				
	1	275297	MICROFACE CARD MICROFACE-PLATINE SCHEDA MICROFACE							-A1	/11.4				
C															
D															
E															
F															

c			Date	19.01.2001			Wiring diagram name	Code	F 316422	PO-LEX/SE-MMX08..14 400 Vac 50 Hz				
b			Signature	G.A.			CQ1002E04 F		F+C 316423			COMPONENT LIST		
a			Contr.	S.M						TYPE: NEW HISP/HIWALL		File: 422-23 f	3 COMPONENT LIST	
Modification	Date	Date	Norm.	EN60204-1-4	Replaced for:	Replaced by:	Origin:					Sheet 4	of XX	Continue

1

2

3

4

5

6

7

8

A

REVISION INDEX

B

C

D

E

F

Revision date	REVISION INDEX	Description	Signature
09/10/00	E	AGGIUNTO COMPONENTI ABB/SCHNEIDER	T.A.
19/12/00	F	CAMBIATO CABLAGGIO ST12	E.V.

c	Date	14.04.1999	Wiring diagram name	Code	PO-LEX/SE-MMX08..14	400 Vac	50 Hz	
b	Signature	G.A.	CQ1002E04 F	F 316422				CQ1002E04 F
a	Contr.	S.M		F+C 316423	TYPE:	NEW HISP/HIWALL	File: 4.22-23 f	7 REVISION INDEX
Modification	Date	Date	Norm.	EN60204-1	Replaced for:	Replaced by:	Origin:	Sheet 1 of 1

Continue