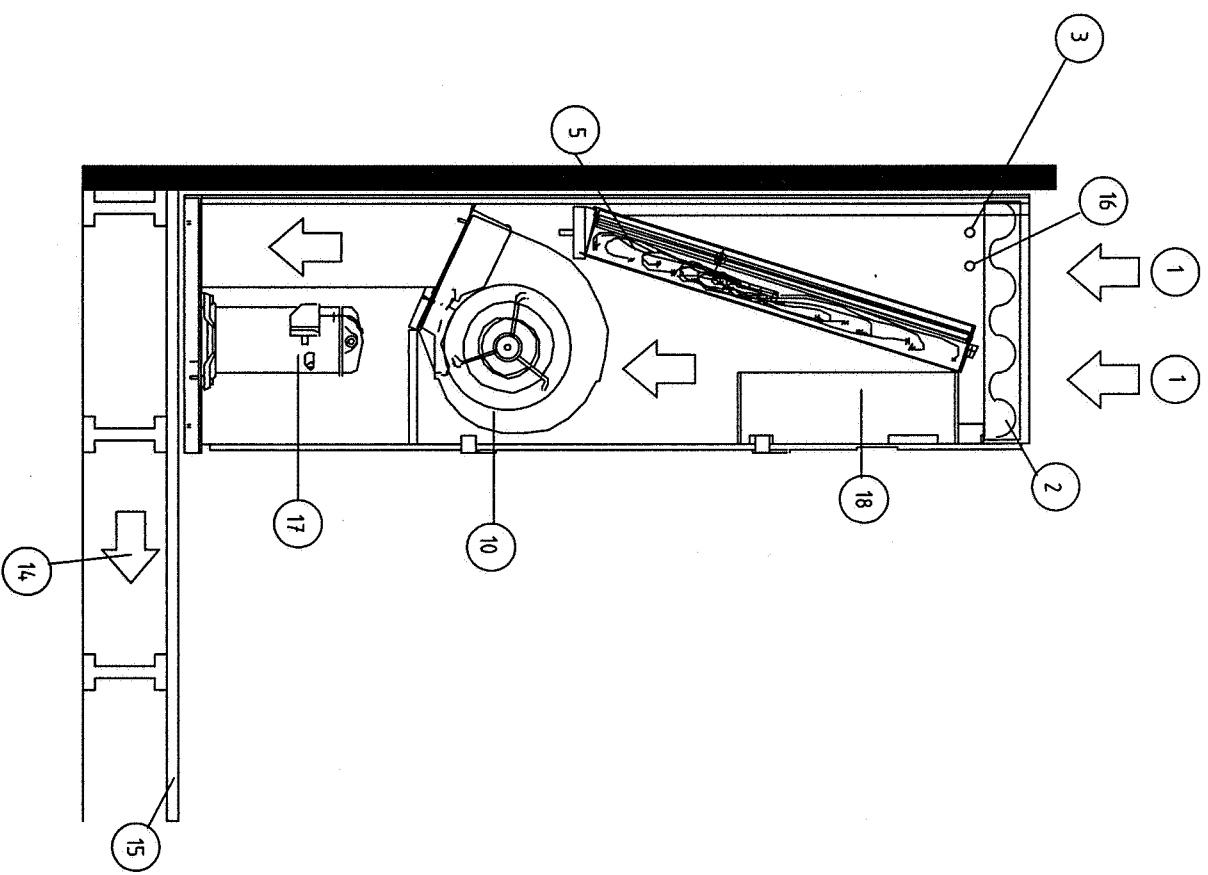


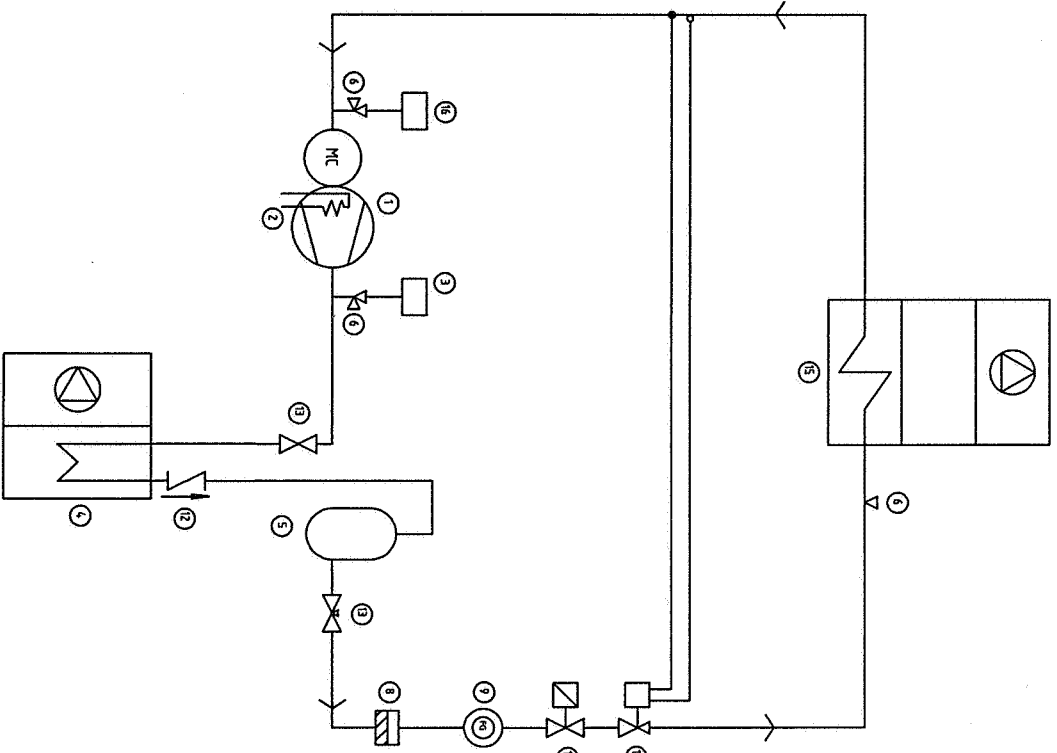
LUCHTSTROOMSCHEMA HIFLEX 6GUA



- VERKLARING
- 1 : RETOURLUCHT
 - 2 : FILTER
 - 3 : RUIMTETEMPERATUURSENSOR
 - 5 : WARMTEWISSELAAR
 - 10 : VENTILATOR
 - 14 : UITBLAAS-LUCHT
 - 15 : VERHOOGDE VLOER MET LUCHTROOSTERS
 - 16 : LUCHTSTROMINGSSENSOR
 - 17 : COMPRESSOR
 - 18 : E-PANEEEL

| | | | | | | | | | |
|---|--|-----------------|--|------------|--|---------------------------------|--|---------------|--|
| C | | Datum | | 06.06.2000 | | Code | | 320480 | |
| B | | Handtekening | | | | TYPE: | | 0-1 | |
| A | | Confr. S.G. | | | | HIFLEX 6GUA (10KW KOELVERMOGEN) | | 400 Vac 50 Hz | |
| M | | Voorschrift | | 650204-1 | | File: | | 320480 | |
| M | | Vervangen voor: | | SSA | | Blad 2 van 19 | | Vervolg 3 | |
| M | | Oorsprong: | | | | Naam elektrisch schema | | BS0106ER5A | |
| M | | Hirooss | | | | Luchstroomschema HIFLEX 6GUA | | | |

KOELKRING HIFLEX 6GUA



VERKLARING

- 1 : COMPRESSOR
- 2 : KRUKKAST VERWARMING
- 3 : HOGEDRUK PRESSOSTAAT
- 4 : LUCHTGEKOELDE CONDENSOR
- 5 : VLOEISTOF RESERVOIR
- 6 : VENTIEL
- 8 : FILTER DROGER
- 9 : KUKGLAS
- 10 : THERMOSTATISCH EXPANSIEVENTIEL
- 12 : TERUGSLAGLEP (INSTALLATEUR)
- 13 : AFSLUTER
- 15 : VERDAMPER
- 16 : LAGEDRUK PRESSOSTAAT
- 17 : MAGNEETVENTIEL

| | | | | | |
|----------------------------------------------------|--|--------------|--|------------------------|--|
| C | | Datum | | 06.04.2000 | |
| B | | Handtekening | | | |
| A | | Confr. S.G. | | | |
| Wijziging | | Datum | | Voorsteknummer | |
| | | | | K000004-1 | |
| HIROSS | | | | | |
| Vervangen voor: s.p.a. | | | | | |
| Vervangen door: Naam elektrisch schema | | | | | |
| BS0106ER5A | | | | | |
| code 320480 | | | | | |
| 0-1 | | 400 Vac | | 50 Hz | |
| TYPE: HIFLEX 6GUA (10KW KOELVERMOGEN) File: 320480 | | | | | |
| Blad 3 | | van 19 | | KOEELKRING HIFLEX 6GUA | |
| | | | | Documentatienummer | |
| | | | | Vervolg | |

1 2 3 4 5 6 7 8

ELEKTRISCHE SPECIFICATIES

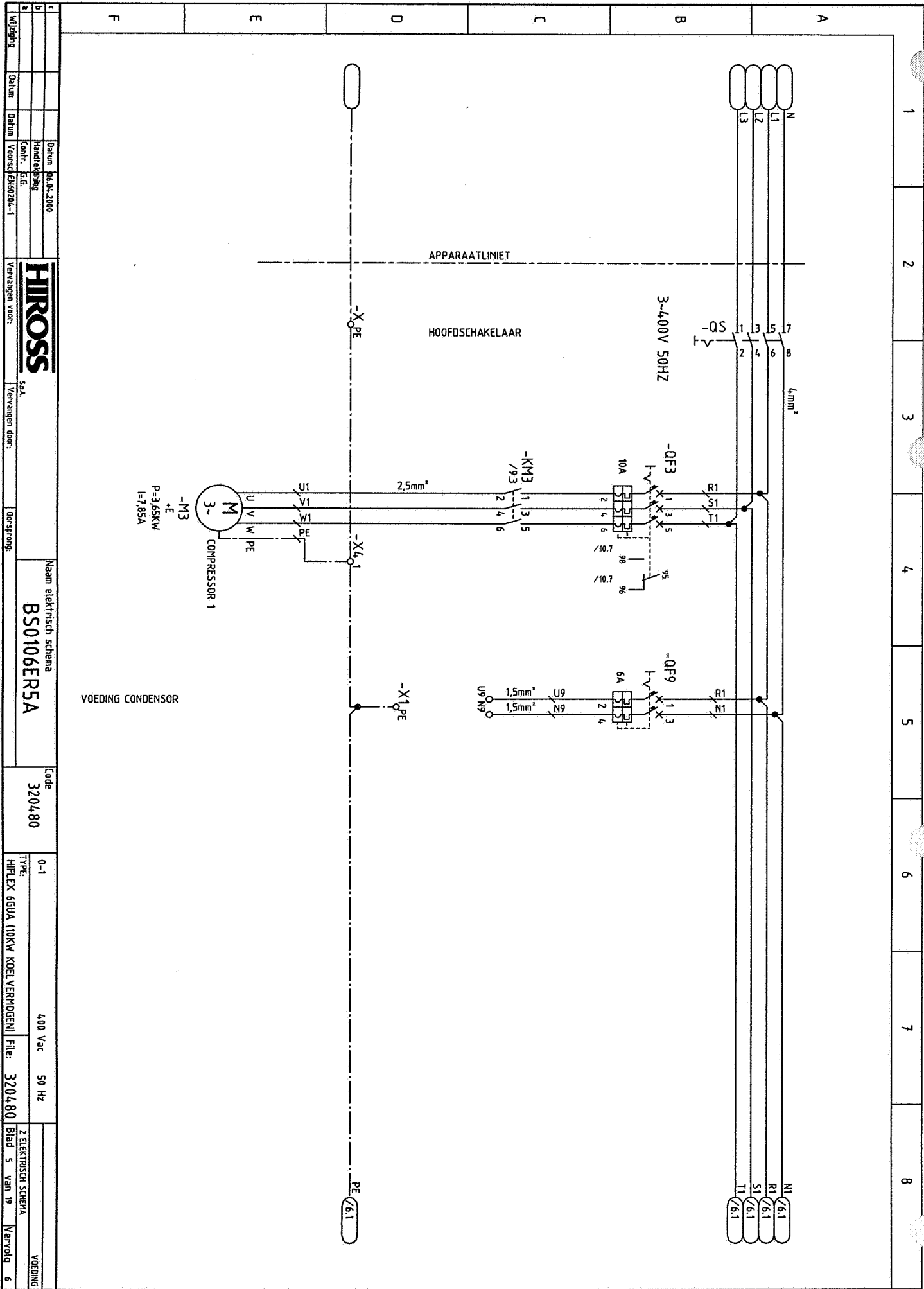
A) VENTILATOR 1
6GU : No.1 Pa 0.6kW 4P
Ia 6.6A

B) COMPRESSOR 1
Vn 400V 3-50Hz
6GU : Pa= 3.65kW Ia =7.85A

ELECTRISCHE VOEDING VANAF: KAST.... GROEP....
DRIE FASEN + NULLEIDER + AARDING (PE) 400V 50Hz (A+B) 4x4mm² + PE 4mm²

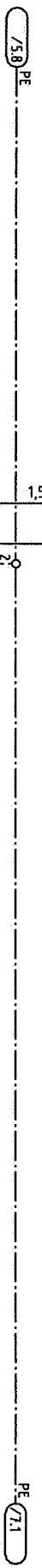
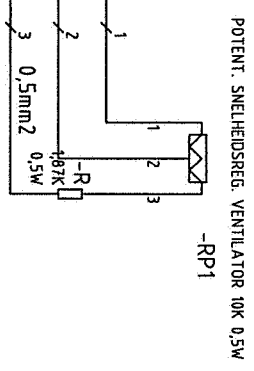
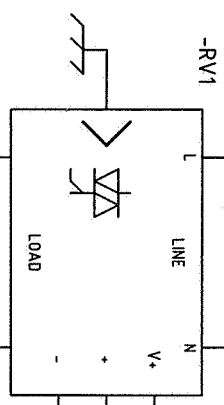
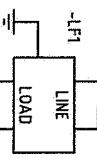
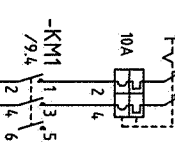
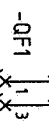
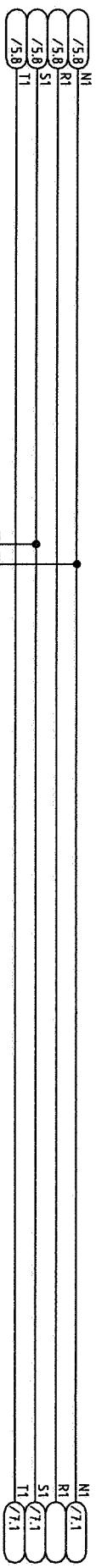
DIT SCHEMA IS UITGEVOERD VOLGENS DE EUROPESE STD EN60204-1

| | | | | | | | | |
|---|-------------------|------------|------------------------|--------|---------------------------------|---------|--------|---------------------------------------------------------|
| C | Datum | 06.04.2000 | Naam elektrisch schema | Code | 0-1 | 400 Vac | 50 Hz | ELEKTRISCHE SPECIFICATIES |
| D | Handtekening | | BS0106ERSA | 320480 | TYPE: | | | |
| E | Contr. S.G. | | | | HIFLEX 6GUA (10KW KOELVERMOGEN) | File: | 320480 | |
| F | Voorst. EN60204-1 | | | | | | | 1 ELEKTRISCHE SPECIFICATIES Blad 4 van 19 Vervolg |



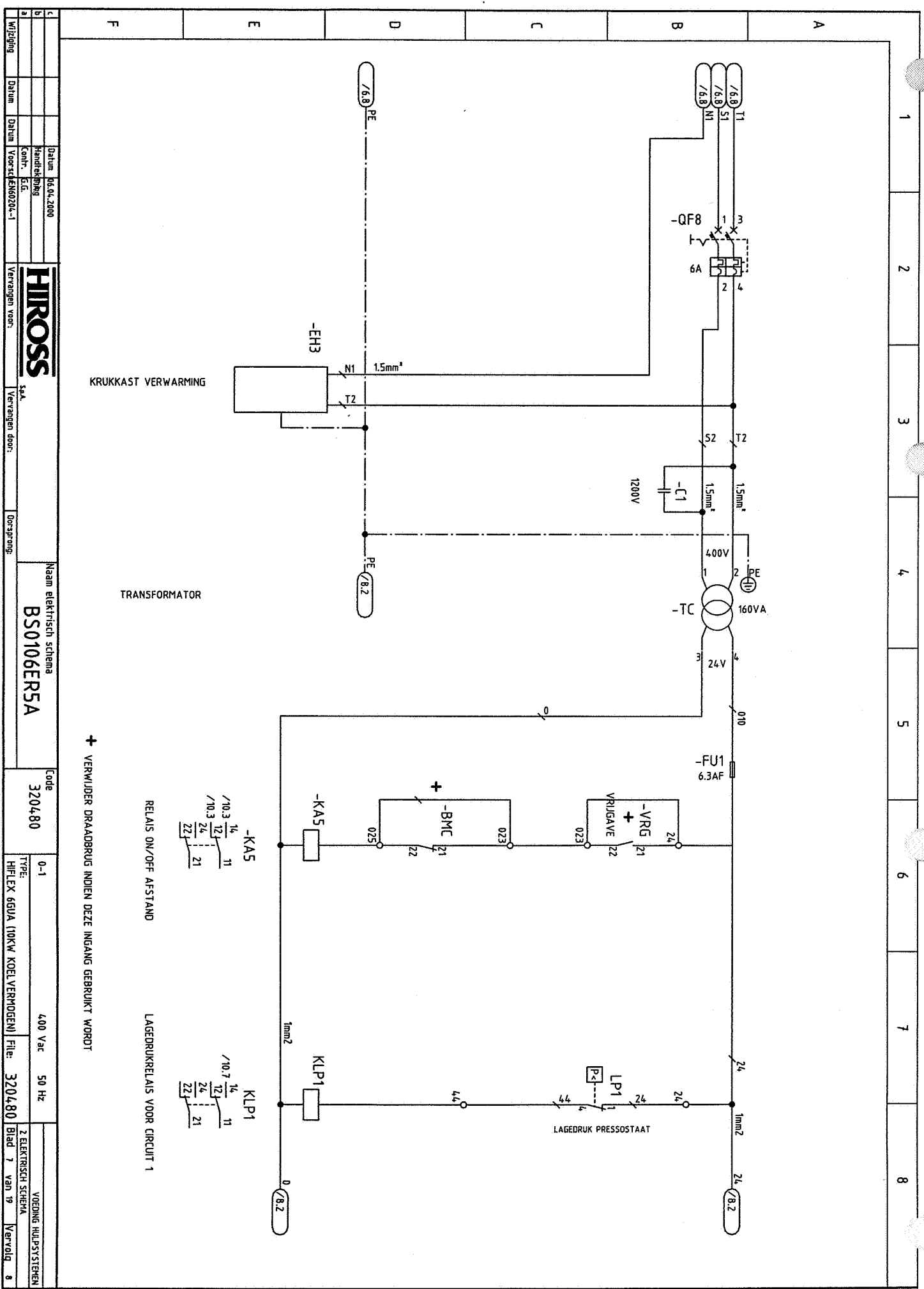
| | | | | | |
|---|--|---------------------------------|--|------------------------|--|
| a | | Datum | | 06.04.2008 | |
| b | | Handtekening | | | |
| c | | Contr. S.G. | | | |
| d | | Wijziging | | | |
| e | | Datum | | | |
| f | | Voorsteeknummer | | HS0204-1 | |
| g | | Vervangen voor: | | HIROSS | |
| h | | S.N. | | SA | |
| i | | Vervangen door: | | Naam elektrisch schema | |
| j | | Oorsprong: | | BS0106ERSA | |
| k | | Code | | 320480 | |
| l | | TYPE: | | 0-1 | |
| m | | HIFLEX 6GUA (10KW KOELVERMOGEN) | | 400 Vac 50 Hz | |
| n | | File: | | 320480 | |
| o | | Blad | | 2 ELEKTRISCH SCHEMA | |
| p | | van | | 5 van 19 | |
| q | | Periode | | Vervolg | |
| r | | Code | | VOEDING | |

1 2 3 4 5 6 7 8



P=0.6kW
I=6.6A
n=1400

| | | | | | | | | | | | | | | | | | |
|-------------------|--|-------------------------|--|------------------------------------|--|--------------|--|-------------------------------------|--|--------------|--|--------------|--|---------------------|--|----------|--|
| Datum: 06.04.2000 | | Handtekening: | | Naam elektrisch schema: BS0106ER5A | | Code: 320480 | | TYPE: 0-1 | | 400 Vac | | 50 Hz | | 2 ELEKTRISCH SCHEMA | | VOEGING: | |
| Wijziging: | | Datum: | | Vervangen voor: HIROSS 53A | | Code: | | TYPE: HIFLEX 66UA 10KW KOELVERMOGEN | | File: 320480 | | Blad 6 van 9 | | Vervolg: 7 | | | |
| Datum: | | Voorstelnummer: 60204-1 | | Vervangen door: | | Code: | | | | | | | | | | | |



+ VERWIJDER DRAADBRUG INDIEN DEZE INGAANG GEBRUIKT WORDT

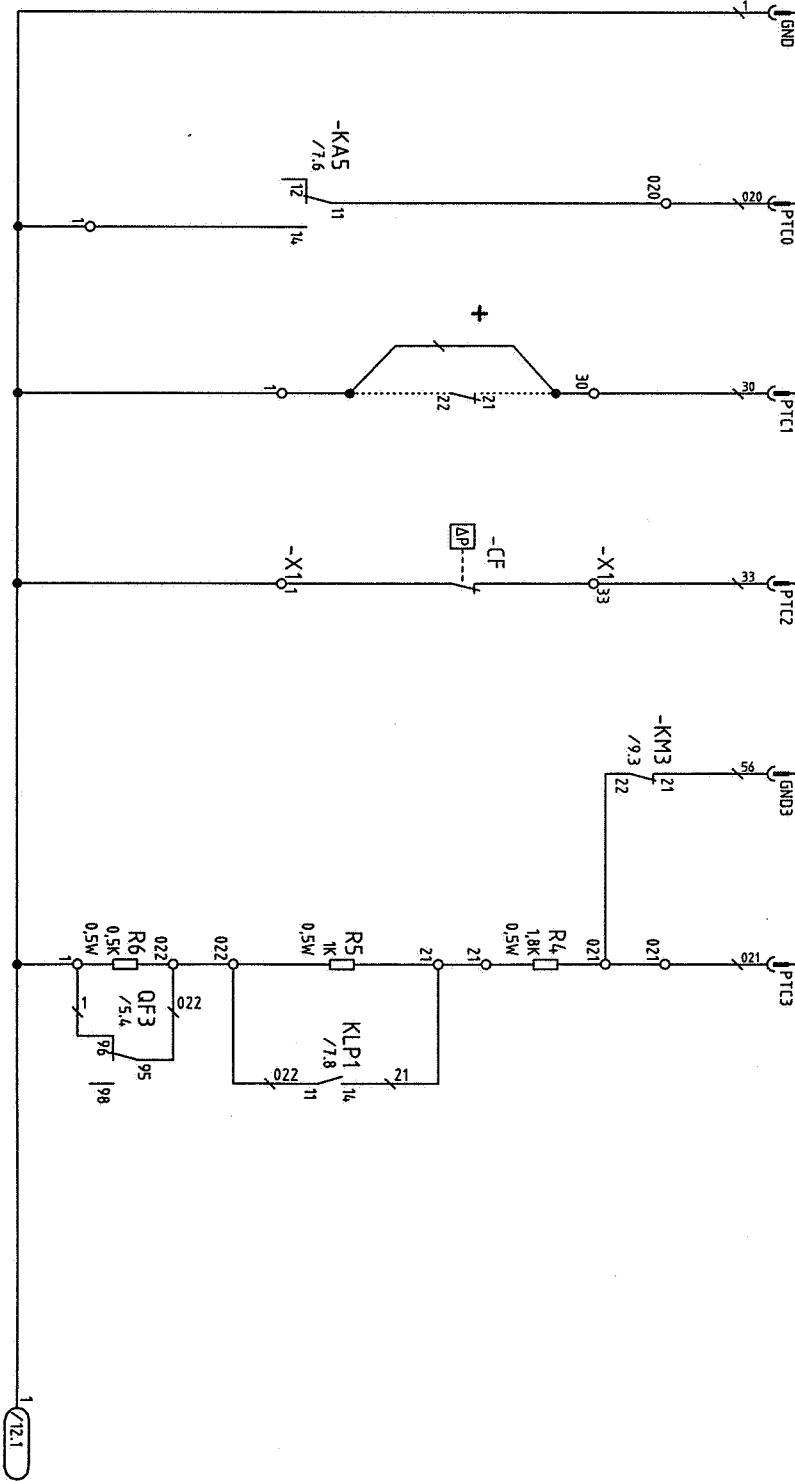
RELAIS ON/OFF AESTAND LAGEDRUKRELAIS VOOR CIRCUIT 1



| | | | | | | | | | | | |
|-----------|--|-------|--|---------------|--|------------|--|---------------------------------|--|---------------------|--|
| a | | b | | c | | d | | e | | f | |
| Wijziging | | Datum | | Handtekening | | Datum | | Naam | | Code | |
| | | | | Confr. E.L.G. | | 06.04.2000 | | elektrisch schema | | 320480 | |
| Wijziging | | Datum | | Handtekening | | 06.04.2000 | | BS0106ER5A | | 0-1 | |
| | | | | Confr. E.L.G. | | | | | | 400 Vac 50 Hz | |
| Wijziging | | Datum | | Handtekening | | 06.04.2000 | | HIFLEX 60UA (10KW KOELVERMOGEN) | | 2 ELEKTRISCH SCHEMA | |
| | | | | Confr. E.L.G. | | | | File: 320480 | | Blad 7 van 19 | |
| Wijziging | | Datum | | Handtekening | | 06.04.2000 | | VOEDING HULPSTYSTEREN | | Vervolg 8 | |
| | | | | Confr. E.L.G. | | | | | | | |

CONNECTOR 3

| | | | | | |
|----------|----------|----------|----------|----------|----------|
| -A1:GND0 | -A1:PTC0 | -A1:PTC1 | -A1:PTC2 | -A1:GND3 | -A1:PTC3 |
| /16.3 | /16.3 | /16.3 | /16.3 | /16.3 | /16.3 |



+ VERWIJDER DRAADBRUG INDIEN DEZE INGANG GEBRUIKT WORDT

ON/OFF AFSTAND

INGANG GEBRUIKER 1 (NVT)

ALARM VERONTR. FILTERS

LAGEBRUK SCHAKELAAR EN THERMISCHE BEVEILIGING COMP.

| | | | | | | | | |
|--------|-------|-------------|--------------|--------------|--------------|--------------|--------------|--------------|
| Meting | Datum | Voorschrift | Handtekening | Cont. S.G. | Handtekening | Cont. S.G. | Handtekening | Cont. S.G. |
| | | | | | | | | |
| Meting | | Datum | Voorschrift | Handtekening | Cont. S.G. | Handtekening | Cont. S.G. | Handtekening |
| | | | | | | | | |
| Meting | | Datum | Voorschrift | Handtekening | Cont. S.G. | Handtekening | Cont. S.G. | Handtekening |
| | | | | | | | | |
| Meting | | Datum | Voorschrift | Handtekening | Cont. S.G. | Handtekening | Cont. S.G. | Handtekening |
| | | | | | | | | |

HIROSS

Naam elektrisch schema
BS0106ERSA

Code
320480

0-1
TYPE: HI-FLEX 68UA 10KW KOELVERMOGEN

400 Vac 50 Hz
2 ELEKTRISCH SCHEMA
Blad 10 van 19

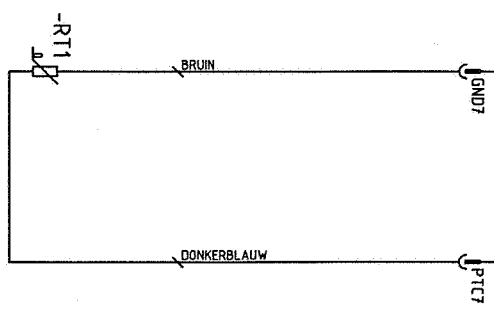
CIRCUIT'S HULPSYSTEMEN
Vervolg 11

1 2 3 4 5 6 7 8

INGANG DIGITAAL

| | | | | | | | | | | | | | | | |
|----------|-------|----------|-------|----------|-------|----------|-------|----------|-------|----------|-------|----------|-------|----------|-------|
| -A1:GND4 | /16.3 | -A1:PTC4 | /16.3 | -A1:GND5 | /16.3 | -A1:PTC5 | /16.3 | -A1:GND6 | /16.3 | -A1:PTC6 | /16.3 | -A1:GND7 | /16.3 | -A1:PTC7 | /16.3 |
|----------|-------|----------|-------|----------|-------|----------|-------|----------|-------|----------|-------|----------|-------|----------|-------|

CONNECTOR 4



RUIMTETEMPERATUURSENSOR

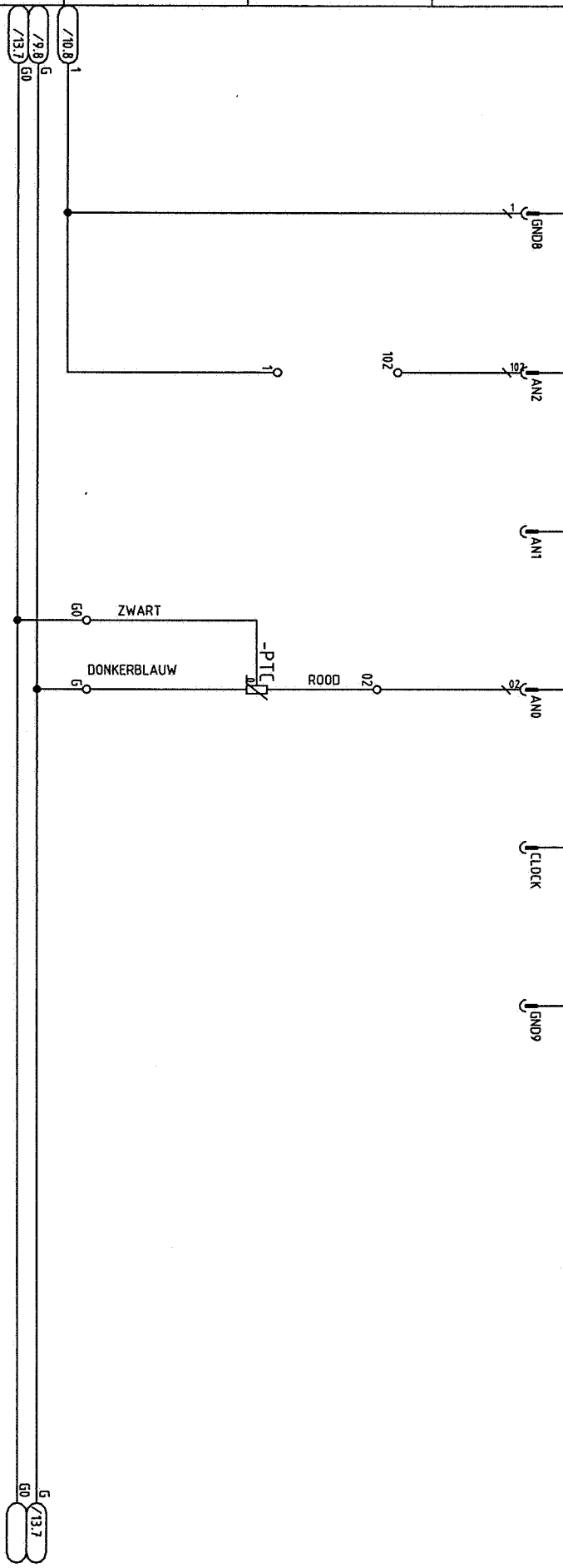
| | | | | | | | | | | | | | | | | | | | |
|---|--|--------------|--|-------------|--|------------------------|--|-----------------|--|------------|--|----------------------------------|--|--------------|--|---------------------|--|-------------------------|--|
| a | | Datum | | 06.04.2000 | | Naam elektrisch schema | | 320480 | | 0-1 | | 400 Vac | | 50 Hz | | 2 ELEKTRISCH SCHEMA | | GIRCUIT'S HULPSTYSTEREN | |
| b | | Handtekening | | Confr. S.G. | | BS0106ER5A | | 320480 | | TYPE: | | HIFLEX 68UA (10KW KOEL VERHOGEN) | | File: 320480 | | Blad 11 van 19 | | Vervolg 12 | |
| c | | Wijziging | | Datum | | Voorsteeknummer | | Vervangen voor: | | Dorsprong: | | Vervangen door: | | SZA | | HROSS | | Vervangen voor: | |

1 2 3 4 5 6 7 8

CONNECTOR 5

| | | | | | |
|-------------------|------------------|------------------|------------------|--------------------|-------------------|
| -A1:GND8 /16.3 | -A1:AN2 /16.3 | -A1:AN1 /16.3 | -A1:AN0 /16.3 | -A1:CLOCK /16.3 | -A1:GND9 /16.3 |
|-------------------|------------------|------------------|------------------|--------------------|-------------------|

INGANG DIGITAAL



WATEROVERLAST DETECTIE (NVT)

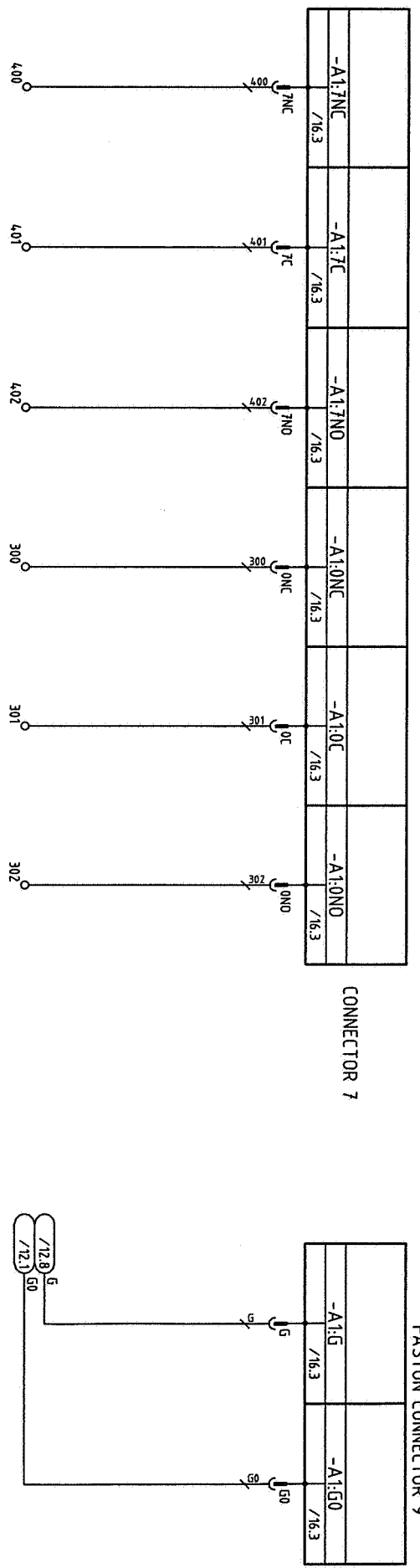
LUCHTSTROMINGSSENSOR

| | | | | | |
|--------------------------------|--|--------------------------------|--|------------------------|--|
| Handtekening | | Datum | | 06.04.2000 | |
| Wijziging | | Datum | | 06.04.2000 | |
| Confr. S.G. | | Datum | | 06.04.2000 | |
| Voorstelnummer | | Datum | | 06.04.2000 | |
| Vervangen voor: | | Vervangen door: | | Naam elektrisch schema | |
| HIROSS | | HIROSS | | BS0106ERSA | |
| S&A | | S&A | | Code | |
| Oorsprong: | | Oorsprong: | | 320480 | |
| TYPE: | | TYPE: | | 0-1 | |
| HFLEX 650A (10KW KOELVERMOGEN) | | HFLEX 650A (10KW KOELVERMOGEN) | | 400 Vac 50 Hz | |
| File: | | File: | | 320480 | |
| Blad | | Blad | | 2 ELEKTRISCH SCHEMA | |
| 12 van 19 | | 12 van 19 | | CIRCUIT'S HULPSYSTEMEN | |
| Vervolg | | Vervolg | | 13 | |

1 2 3 4 5 6 7 8

UITGANG DIGITAAL

Voeding : Circuits hulpsysteem:
FASTON CONNECTOR 9



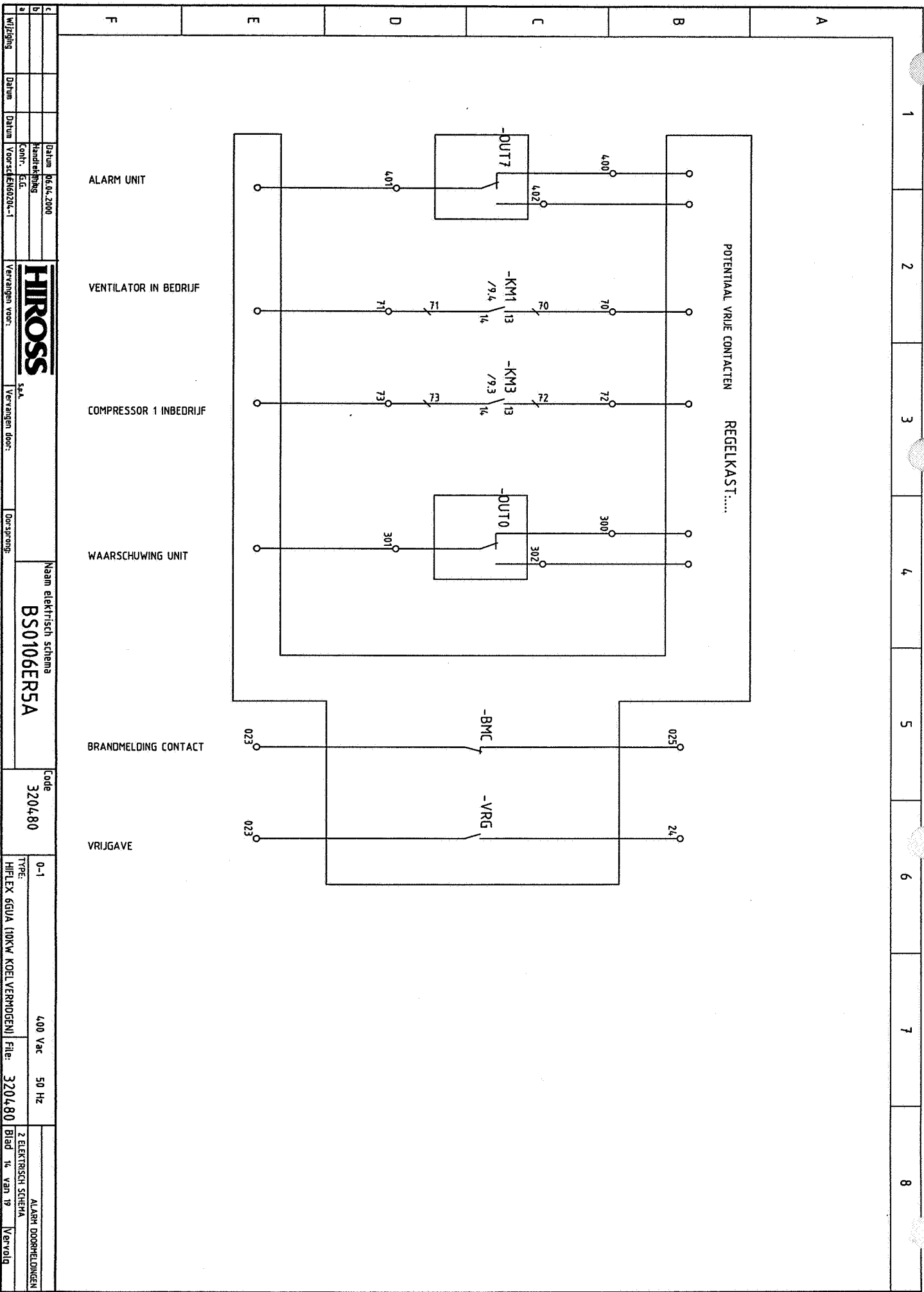
400-401 DOORVERBODDEN IS ALARM
BLAD 14-1

300-301 DOORVERBODDEN IS ALARM
BLAD 14-4

ALGEMEEN ALARM

WAARSCHUWINGSALARM

| | | | | | | | | | | | |
|-----------|--|-------|--|-------|--|-------|--|---------------------------------------|--|------------------------|--|
| a | | b | | c | | d | | e | | f | |
| Wijziging | | Datum | | Datum | | Datum | | Handtekening | | Handtekening | |
| | | | | | | | | Contr. S.G. | | Date: 06.04.2000 | |
| | | | | | | | | Voorst: EN60204-1 | | Vervangen voor: | |
| | | | | | | | | S.S.A. | | Vervangen door: | |
| | | | | | | | | Naam elektrisch schema | | Doorsprong: | |
| | | | | | | | | BS0106ER5A | | Code | |
| | | | | | | | | 320480 | | 0-1 | |
| | | | | | | | | TYPE: HIFLEX 6GUA (10KW KOELVERMOGEN) | | 400 Vac 50 Hz | |
| | | | | | | | | File: 320480 | | 2 ELEKTRISCH SCHEMA | |
| | | | | | | | | Blad 13 van 19 | | CIRCUIT'S HULPSYSTEMEN | |
| | | | | | | | | Vervolg 14 | | | |



1 2 3 4 5 6 7 8

| | | | | | |
|---------------------------------|--|---------------------|----------------|------------|--|
| C | | Datum | | 06.04.2000 | |
| B | | Handtekening | | | |
| A | | Contr. S.G. | | | |
| Wijziging | | Datum | Voorstelnummer | EHS0204-1 | |
| Naam elektrisch schema | | BS0106ERSA | | | |
| Code | | 320480 | | | |
| TYPE | | 0-1 | | | |
| HIFLEX 65UA (10KW KOELVERMOGEN) | | File | | 320480 | |
| Blad | | 16 | | van 19 | |
| Vervolg | | ALARM DOORMELDINGEN | | | |

HIROSS

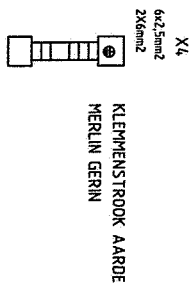
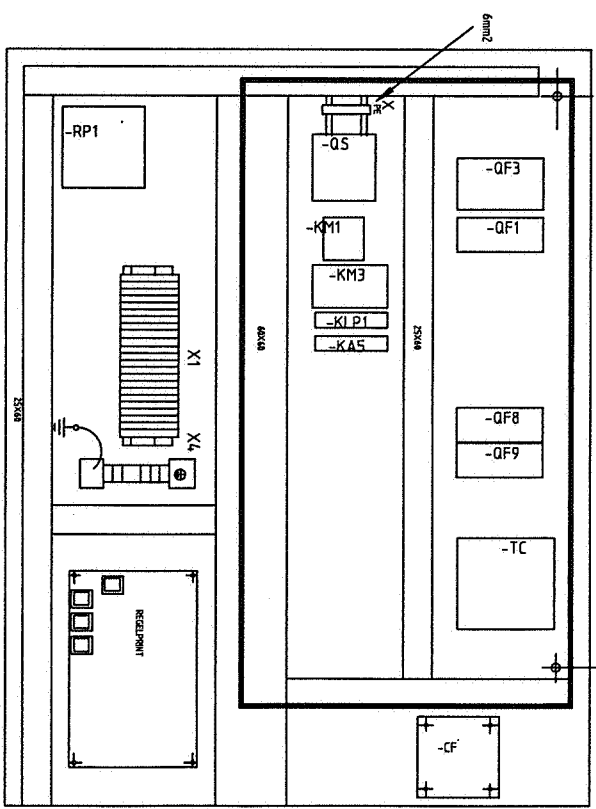
SEK

320480

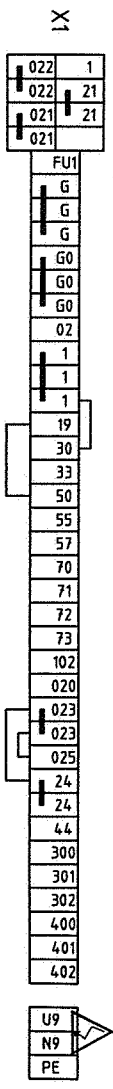
400 Vac 50 Hz

2 ELEKTRISCH SCHEMA

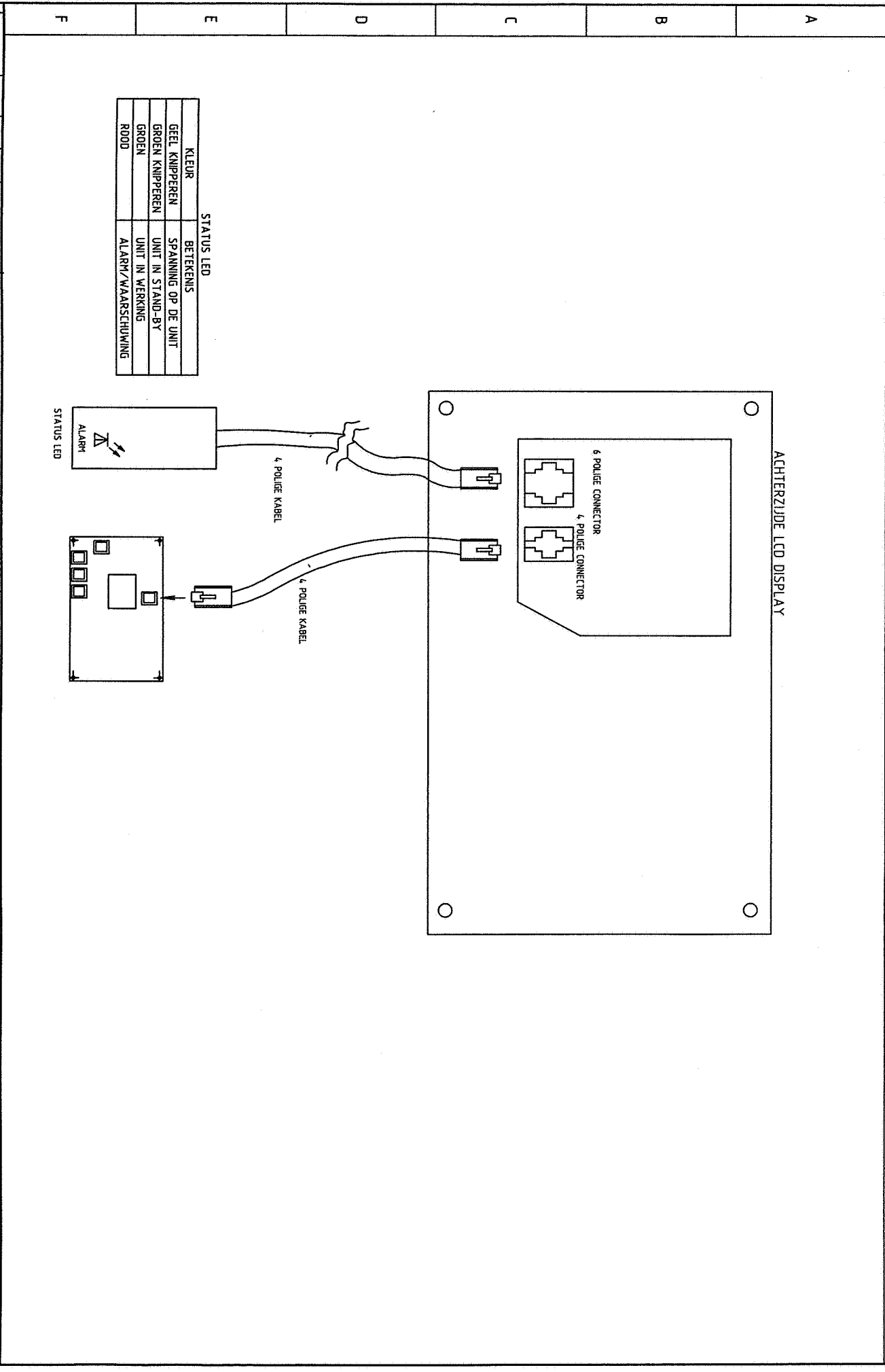
Kastindeling



Aansluitblok:



| | | | | | |
|-------------------------------------------------------------------------------------------------------------------------------------------------------------------------------------------------------------------------------------------------------------------------------------------------------------------------------------------|--|--------------|-------|------------|--------------|
| c | | Datum | | 16.04.2000 | |
| b | | Handtekening | | | |
| a | | Contr. S.G. | | | |
| Wijziging | | Datum | Datum | Voorst. | Handtekening |
| | | | | 000000-1 | |
| <p>HIROSS</p> <p>Vervangen voor: BSA</p> <p>Vervangen door: BSA</p> <p>Naam elektrisch schema: BS0106ERSA</p> <p>Code: 320480</p> <p>TYPE: 0-1</p> <p>400 Vac 50 Hz</p> <p>HI-FLEX 6BUA (10KW KOELVERMOGEN) File: 320480</p> <p>Blad 15 van 19</p> <p>Kastindeling</p> <p>Vervolg 16</p> | | | | | |



| | | | | | |
|-----------|--|---------------------------------|--|-------------------------|--|
| a | | b | | c | |
| Wijziging | | Datum | | Datum | |
| | | 06.04.2000 | | | |
| | | handtekening | | | |
| | | Contr. S.G. | | | |
| | | Voorstelefnr: 60204-1 | | | |
| | | Handtekening | | | |
| | | Vervangen voor: | | | |
| | | S.A. | | | |
| | | Vervangen door: | | | |
| | | Oorsprong: | | | |
| | | Naam elektrisch schema | | Code | |
| | | BS0106ER5A | | 320480 | |
| | | TYPE: | | 0-1 | |
| | | HIFLEX 68UA (10KW KOELVERMOGEN) | | 400 Vac 50 Hz | |
| | | File: 320480 | | 3 kaatdeling | |
| | | Blad 17 van 19 | | Achterzijde LED DISPLAY | |
| | | Vervolg | | | |

| 1 | 2 | 3 | 4 | 5 | 6 | 7 | 8 | |
|--------|--------------------|-------------------------------------------|----------------------------|--------------------|---------------|-------|----------------|--------|
| AANTAL | ARTIKELCODE | OMSCHRIJVING | TECHNISCHE GEGEVENS | Catalogusnr. | IDENTIFICATIE | REF. | FABRIKANT | Code |
| 1 | B84-112-B-8110 10A | ANTI-STORINGSFILTER | B84-112-B-8110 | B84-112-B-8110 10A | -LF1 | /6.3 | Siemens | 254657 |
| 1 | DD10/710 | VENTILATOR 1 | DD10/710 600W IP44 CL F | DD10/710 | -EV1 | /6.3 | NICOITA | 381149 |
| 1 | G60-H1076-400 | DRUKSCHAKELAAR LAAG DRUK 1 | G60-H1076-400 2-2,88bar | | -LP1 | /7.8 | RANCO | 354168 |
| 1 | G63-P5055,400 | DRUKSCHAKELAAR HOOG DRUK | G63-P5055,400 17,5-24,8bar | | -HP | /9.2 | RANCO | 354164 |
| 1 | H517-10 | MAGNETISCHAKELAAR COMPRESSOR | INO | H517-10 | -KM3 | /9.3 | AEG | 255628 |
| 1 | MKPC44/2 | CONDENSATOR | MKPC44/2 | MKPC44/2 | -C1 | /7.3 | ARCO TRONICS | 254324 |
| 1 | MKT1-4.3 | ANTI-STORINGSFILTER | MKT1-4.3 | 0,5micrOF 100ohm | -SSF1 | /9.2 | ARCO TRONIC | 254656 |
| 1 | P33AB-9204 | DRUKSCHAKELAAR VERONTR. FILTERS | P33AB-9204 0,8-6mbar | | -CF | /10.5 | JOHNSON | 354102 |
| 1 | RGF3083880 CE 8A | SNELHEIDSBEGEELAAR VENTILATOR | RGF3083880 CE 8A | RGF3083880 CE 8A | -RV1 | /6.3 | SELPRO | 354432 |
| 1 | RGFPB1034,0XXX00 | POTENT. SNELHEIDSBEG. VENTILATOR 10K 0,5W | RGFPB1034,0XXX00 | RGFPB1034,0XXX00 | -RP1 | /6.5 | SELPRO | 275310 |
| 1 | SF520263 | ZEKERING HULPSYSTEMEN 24V | 6.3A F | SF520263 | -FU1 | /7.5 | OMEGA | 254773 |
| 1 | SH/HH | AUTOM. SCHAKELAAR COMPRESSOR | INA+INC | 831-305-443 | -OF3 | /5.4 | AEG | 256089 |
| 1 | TK63 4P | HOOFDSCHAKELAAR | 63A 4 POLI | 19135M1 | -OS | /5.2 | TECHNOELECTRIC | 256403 |
| 1 | ZR48-KC-TFD | COMPRESSOR 1 | Sroll | ZR48-KC-TFD | -M3 | /5.4 | COPELAND | 147393 |
| 1 | 0,5K | WEERSTAND | 0,5K 1% | 0,5K 1% | -R6 | /10.6 | RS | 255210 |
| 2 | 40.52 8 024 50 | RELAIS ON/OFF AFSTAND | 40.52 24V ac | 40.52 8 024 50 | -KA5 | /7.6 | FINDER | 256170 |
| 1 | | LAEDRIJKRELAIS VOOR CIRCUIT 1 | 40.52 24V ac | 40.52 8 024 50 | -KLP1 | /7.8 | FINDER | 256170 |
| 1 | 5TTM2VM | TRANSFORMATOR | 160VA | 5TTM2VM | -TC | /7.4 | MARINI | 255769 |
| 2 | 95.85.1 | RELAIS ON/OFF AFSTAND | 95.85.1 | 95.85.1 | -KA5 | /7.6 | FINDER | 000000 |
| 1 | | LAEDRIJKRELAIS VOOR CIRCUIT 1 | 95.85.1 | 95.85.1 | -KLP1 | /7.8 | FINDER | 000000 |
| 1 | 115 131,06+/-F6,3F | ZEKERING HULPSYSTEMEN 24V | 114/-8,5F GRIGIO | 115 131,06 | -FU1 | /7.5 | ENTRELEC | 255716 |
| 1 | 14,9-694 1K | WEERSTAND | 14,9-694 1K | 14,9-694 | -R5 | /10.6 | RS | 255211 |
| 1 | 14,9-723 18K | WEERSTAND | 14,9-723 | 14,9-723 | -R4 | /10.6 | RS | 255215 |
| 1 | 230-8378 1,87K | WEERSTAND | 230-8378 | 230-8378 | -R | /6.5 | RS | 000000 |
| 2 | 831-820-676 | AUTOM. UITSCHAKELAAR TRANSFORMATOR | 6A 6KA | E82 C 6 | -OF8 | /7.2 | AEG | 255048 |
| | | AUTOM. SCHAKELAAR CONDENSOR | 6A 6KA | E82 C 6 | -OF9 | /5.5 | AEG | 255048 |
| 1 | 831-820-678 | AUTOM. SCHAKELAAR VENTILATOR | 10A 6KA | E82 C 10 | -OF1 | /6.3 | AEG | 255067 |
| 1 | 831-830-678-AUS | AUTOM. SCHAKELAAR COMPRESSOR | 10A 6KA | E83 C10 | -OF3 | /5.4 | AEG | 255073 |
| 1 | 910-302-003-55 | MAGNETISCHAKELAAR VENTILATOR 1 | 24V AC, NNA | LS07,10 | -KM1 | /9.4 | AEG | 256006 |
| 1 | 910-302-510-55+NO | MAGNETISCHAKELAAR COMPRESSOR | 24V AC 50-60, INC+NO | LS7,11 | -KM3 | /9.3 | AEG | 256038 |
| 1 | 19501 | HOOFDSCHAKELAAR | 19501 | 19501 | -OS | /5.2 | TECHNOELECTRIC | 256994 |
| 1 | 19535-100 | HOOFDSCHAKELAAR | 19535-100 | 19535-100 | -OS | /5.2 | TECHNOELECTRIC | 255494 |
| 1 | 183139 | ELEKTROMAGNETISCHE KLEP FREDON | ETV 1078/4,5 1/2" D.12mm | ETV 1078/4,5 | -YV3 | /9.3 | CASTEL | 183139 |
| 8 | 255809 | CONNECTOR/FASTON | 255809 | 255809 | -XC0N1 | /16.3 | ZETRONIC | 255809 |

| | | | | | |
|---------------------------------------|-------|--------------|----------------|-----------------|-----------------|
| Handtekening | Datum | Handtekening | Datum | Handtekening | Datum |
| | | | | | |
| Wijziging | Datum | Voorschrift | EN60204-1 | Verzorgen voor: | Verzorgen door: |
| | | | | | |
| Naam elektrisch schema | | | Oorsprong: | | |
| BS0106ER5A | | | | | |
| Code | | | 320480 | | |
| 0-1 | | | 400 Vac | | |
| TYPE: HIFLEX 6GUA (18KW KOELVERMOGEN) | | | 50 Hz | | |
| File: 320480 | | | Blad 16 van 19 | | |
| 4 ONDERDELENLIST | | | ONDERDELENLIST | | |
| Vervolg 19 | | | | | |



