

	1	2	3	4	5	6	7	8
Document list								
	Document type	Sheet	Description			Rev.		
A	0 Copertina	1	Document list					
	1 SPECIFICHE ELETTRICHE	2	Electrical specification					
	2 Schema	3	Power					
	2 Schema	4	Power					
	2 Schema	5	Power					
	2 Schema	6	Power					
B	2 Schema	7	Auxiliaries 24V					
	2 Schema	8	Auxiliaries 24V					
	2 Schema	9	Auxiliaries 24V					
	2 Schema	10	Auxiliaries 24V					
	2 Schema	11	Auxiliaries 24V					
	2 Schema	12	Auxiliaries 24V					
	2 Schema	13	Auxiliaries 24V					
	2 Schema	14	Auxiliaries 24V					
	2 Schema	15	Auxiliaries 24V					
	2 Schema	16	Auxiliaries 24V					
C	3 Layout	17	LAYOUT					
	3 Layout	18	LAYOUT					
	3 Layout	19	LAYOUT					
	4 Lista componenti	20	COMPONENT LIST					
	4 Lista componenti	21	COMPONENT LIST					
	4 Lista componenti	22	COMPONENT LIST					
	4 Lista componenti	23	COMPONENT LIST					
4 Lista componenti	24	COMPONENT LIST						
D	5 REVISIONI	27	318818B					

Wire Colour Code	
BLACK	Power
RED	AUXILIARY 24V ac
BLUE	AUXILIARY 48V dc
YELLOW/GREEN	Earth

Reference code: /3 .6
 Sheet ← → Column

E	Customer:									
	Order:									
	Supply: 400/380 V 50/60 Hz									
	Auxiliary circuits: 24 V									
	NOTE 1									
	NOTE 2									
F	NOTE 3									

c			Date	08.06.2001	Wiring diagram name			Code	318818		F+C+H		400/380 Vac50/60 Hz		Document list	
b			Signature	T.A.	318818B			318818		TYPE: HIMOD 28-34DX		File: 318818B		0 Copertina Sheet 1 of 27		
a			Contr.	G.G.												
Modificat	Date	Date	Norm.	EN60204-1	Replaced for:	Replaced by:	Origin:					Continue				

1

2

3

4

5

6

7

8

A

Electrical specification-Elektrische Angaben-Specifiche elettriche

A) FAN 1-2
VENTILATOR 1-2
VENTILATORE 1-2

Un 400 3-50Hz
28-34U/O : No.2 Pa 2,3kW
Ia 4,3A 1260rpm cosf=0,85

B

B) COMPRESSOR
VERDICHTER
COMPRESSORE

Un 400 3-50Hz (FLA)
28U/O Pa 6,3kW Ia 18,5A cosf=0,75
34U/O Pa 7,2kW Ia 21,2A cosf=0,75

C

C) ELECTRIC HEATING
ELEKTROHEIZUNG
RISCALDAMENTO ELETTRICO

3 STEPS - 3 GRADINI - 3 STUFEN
28-34U/O Pn 11,7 kW Un 400V 3-

D

D) HUMIDIFIER
BEFEUCHTER
UMIDIFICATORE

HUMIDAIR
Un 400V 3-
1)-STEAM PRODUCTION
PRODUZ. VAPORE 9kg/h Pn 6,8kW
DAMPFMENGE

E

SUPPLY LINE-SPANNUNGSVERSORGUNG-LINEA ALIMENTAZIONE

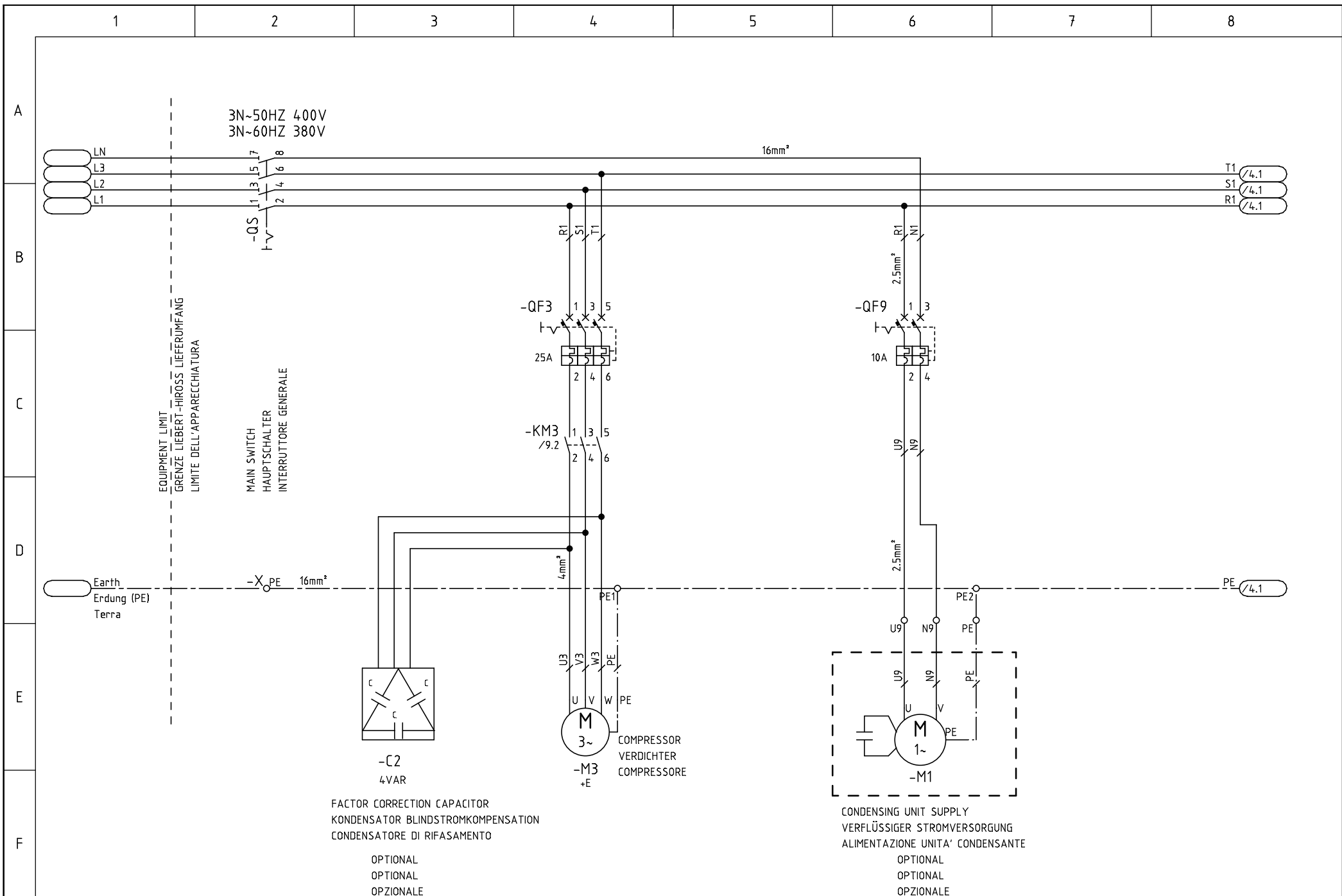
3-PHASE + NEUTRAL + GROUND (PE) 400V +N 50Hz
3-PHASE + NULLEITER + ERDUNG (PE) 380V +N 60Hz
3-FASE + NEUTRO + TERRA (PE)

R2Z	Imax:28U/O	Imax:34U/O
A+B	28A	31,8A
A+B+C	45,5A	48,8A
A+B+D	44A	47,8A

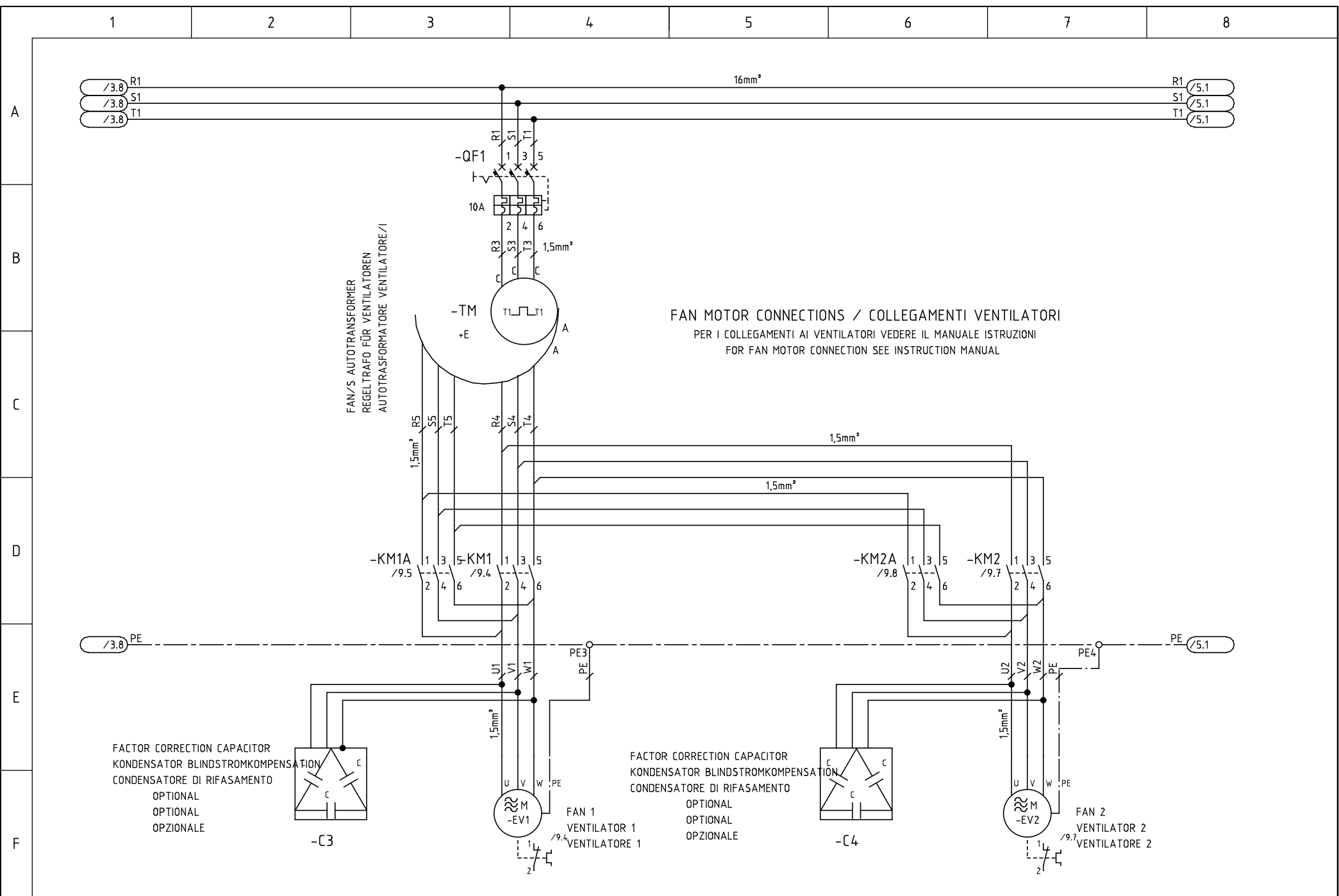
F

THIS DIAGRAM IS CARRIED OUT ACCORDING TO EUROPEAN STD EN60204-1-2

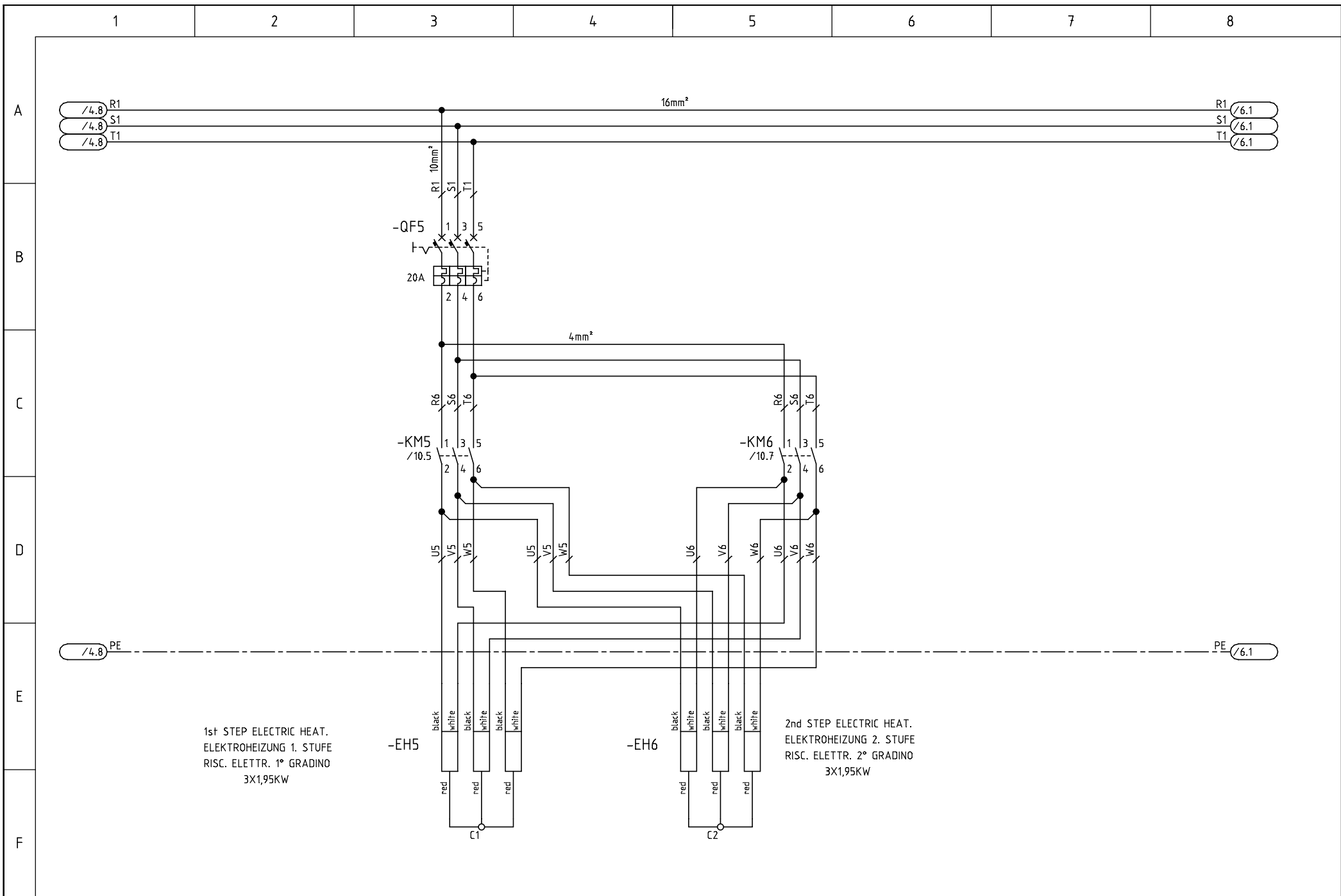
c		Date	07.06.2001	Wiring diagram name	Code	F+C+H	400/380 V $\sqrt{3}$ /60 Hz	Electrical specification
b		Signature	E.A.	318818B	318818			1 SPECIFICHE ELETTRICHE
a		Contr.	G.G.			TYPE: HIMOD 28-34DX	File: 318818B	Sheet 2 of 27 Continue
	Modification	Date	Norm.	Replaced for:	Replaced by:	Origin:		



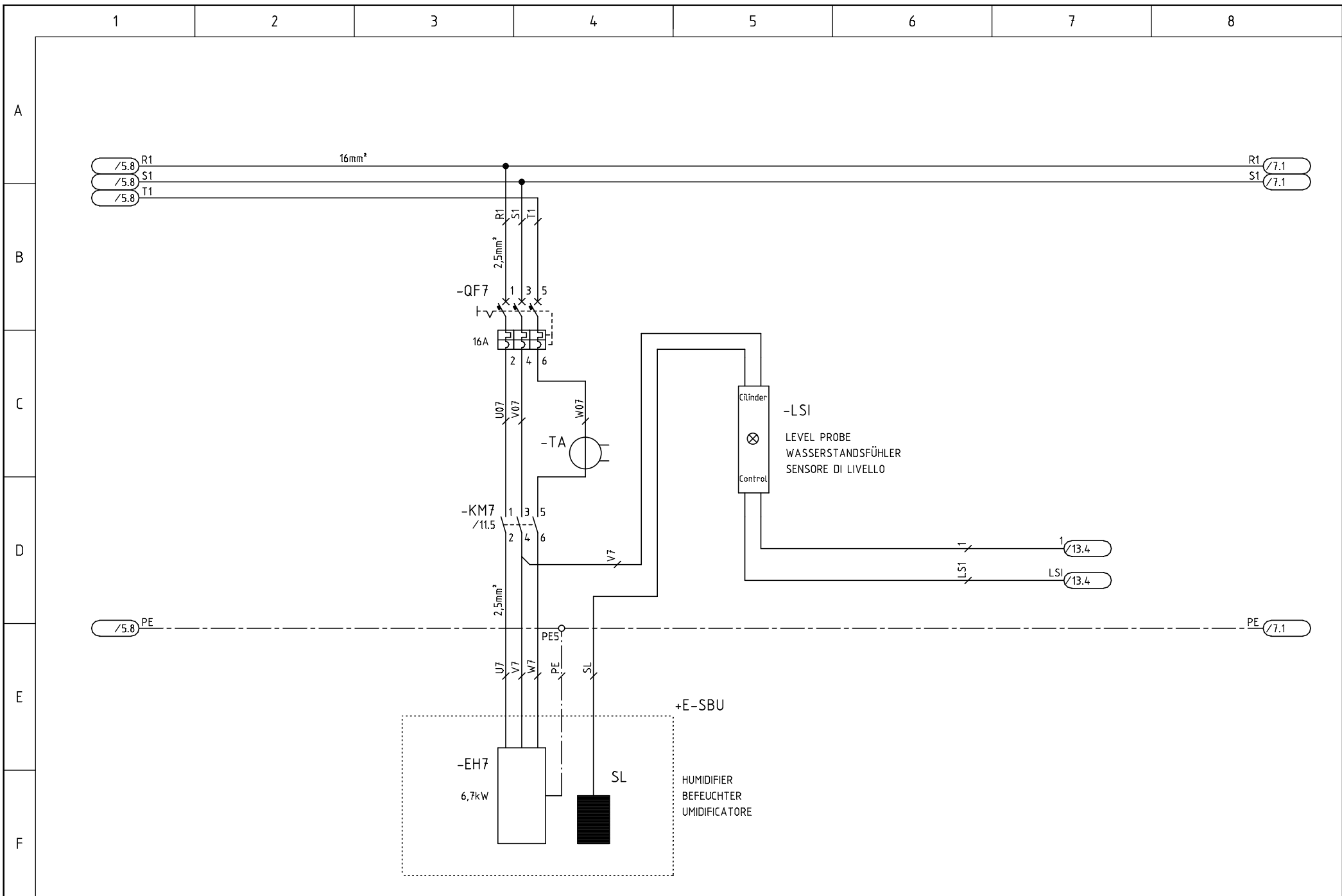
c		Date	07.06.2001	Wiring diagram name	318818B	Code	318818	F+C+H	400/380 V $\sqrt{3}$ /60 Hz	
b		Signature	E.A.							Power
a		Contr.	G.G.							2 Schema
Modification	Date	Date	Norm.	EN60204-1	Replaced for:	Replaced by:	Origin:	TYPE:	HIMOD 28-34DX	File: 318818B
									Sheet 3 of 27	Continue 4



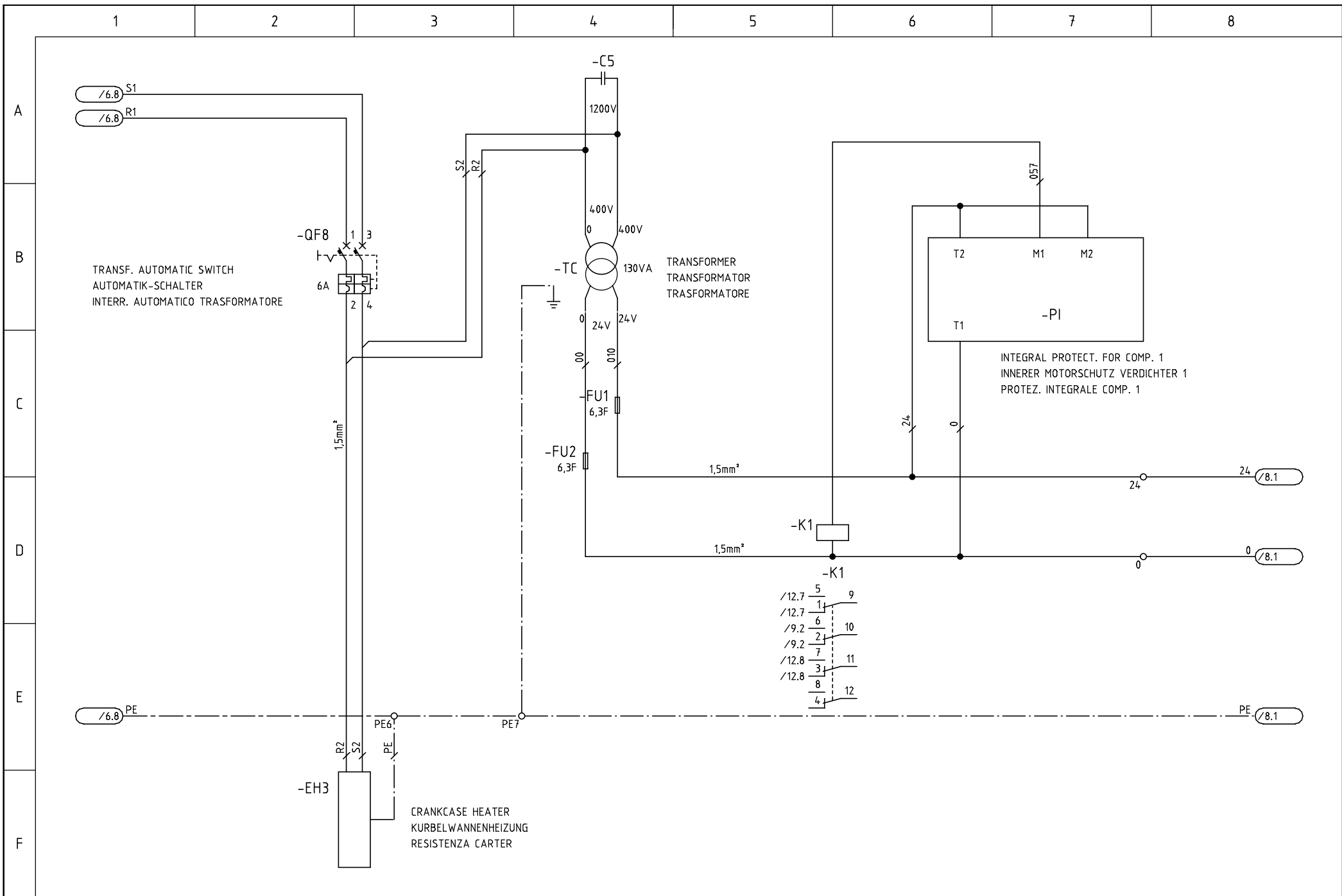
c		Date	07.06.2001	Wiring diagram name	318818B	Code	318818	F+C+H	400/380 V $\sqrt{3}$ / 60 Hz	Power
b		Signature	E.A.							
a		Contr.	G.G.							
Modification	Date	Date	Norm.	EN60204-1	Replaced for:	Replaced by:	Origin:	TYPE:	HIMOD 28-34DX	File: 318818B
									2 Schema	Sheet 4 of 27
									Continue	5



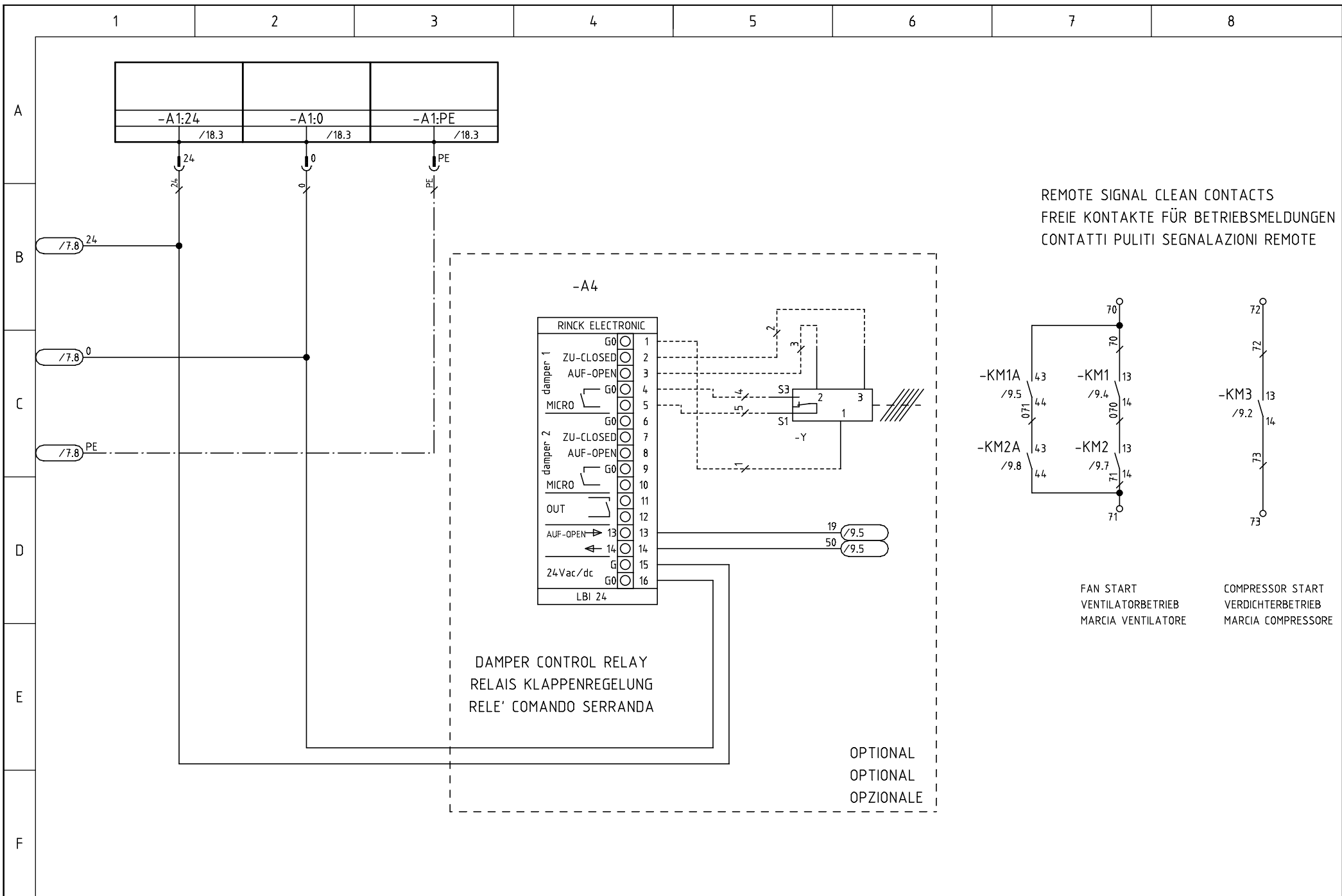
c		Date	07.06.2001	Wiring diagram name			Code	F+C+H	400/380 V $\sqrt{3}$ /60 Hz		
b		Signature	F.A.	318818B			318818			Power	
a		Contr.	G.G.					TYPE:	HIMOD 28-34DX	2 Schema	
Modification	Date	Date	Norm.	EN60204-1	Replaced for:	Replaced by:	Origin:	File:	318818B	Sheet 5 of 27	Continue 6



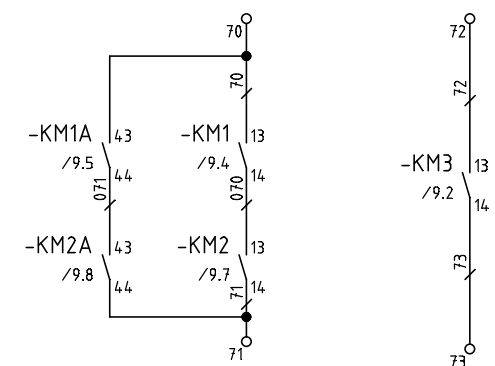
c		Date	07.06.2001	Wiring diagram name	Code	F+C+H	400/380 V $\sqrt{3}$ /60 Hz		
b		Signature	F.A.	318818B	318818			Power	
a		Contr.	G.G.			TYPE:	HIMOD 28-34DX	2 Schema	
Modification	Date	Date	Norm.	EN60204-1	Replaced for:	Replaced by:	Origin:	File: 318818B	
								Sheet 6 of 27	Continue 7



c		Date	07.06.2001	Wiring diagram name	318818B	Code	318818	F+C+H	400/380 V 50/60 Hz	Auxiliaries 24V
b		Signature	E.A.							
a		Contr.	G.G.							
Modification	Date	Date	Norm.	EN60204-1	Replaced for:	Replaced by:	Origin:	HIMOD 28-34DX	File: 318818B	2 Schema Sheet 7 of 27 Continue 8



REMOTE SIGNAL CLEAN CONTACTS
 FREIE KONTAKTE FÜR BETRIEBSMELDUNGEN
 CONTATTI PULITI SEGNALAZIONI REMOTE



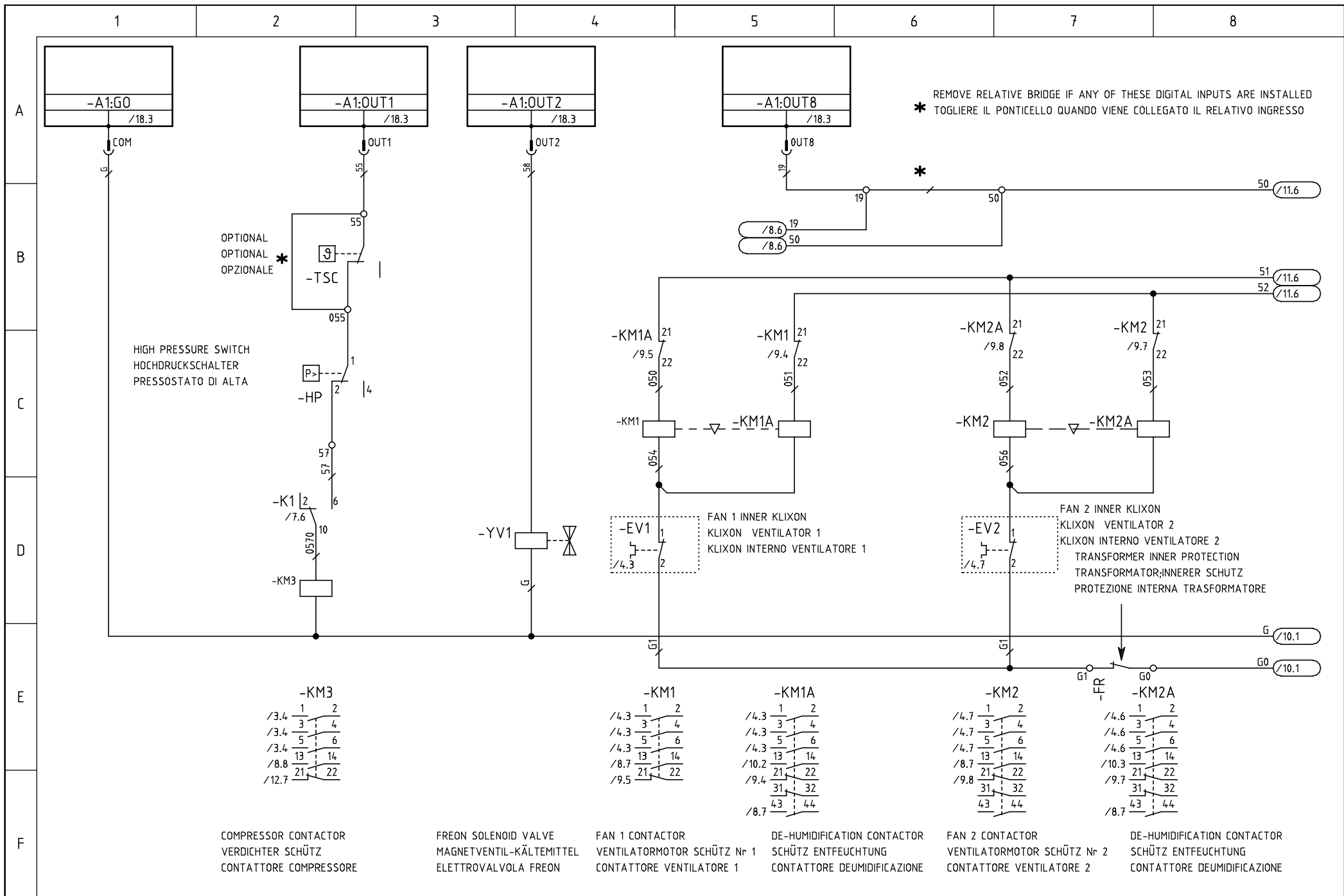
FAN START
 VENTILATORBETRIEB
 MARCIA VENTILATORE

COMPRESSOR START
 VERDICHTERBETRIEB
 MARCIA COMPRESSORE

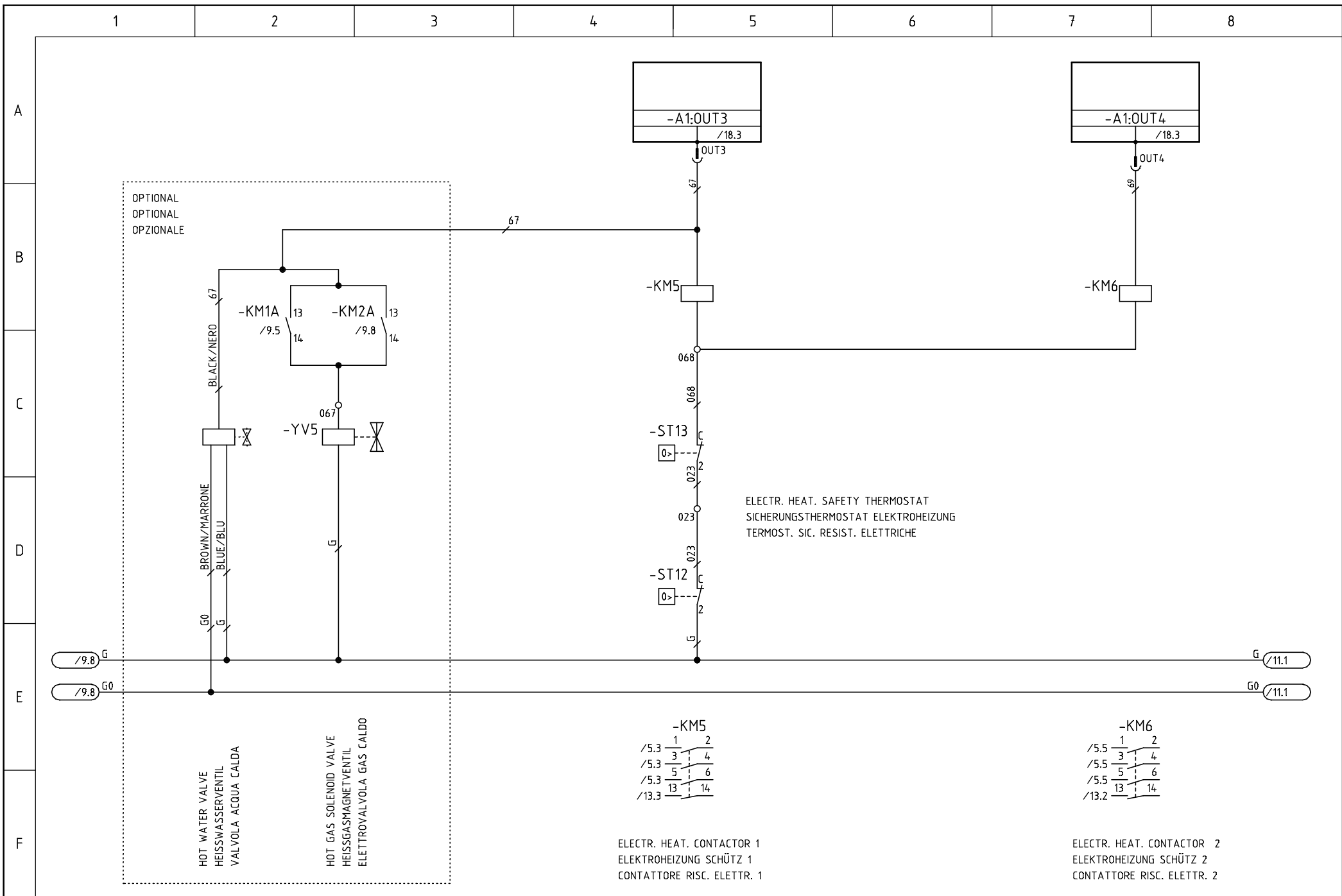
DAMPER CONTROL RELAY
 RELAIS KLAPPENREGELUNG
 RELE' COMANDO SERRANDA

OPTIONAL
 OPTIONAL
 OPZIONALE

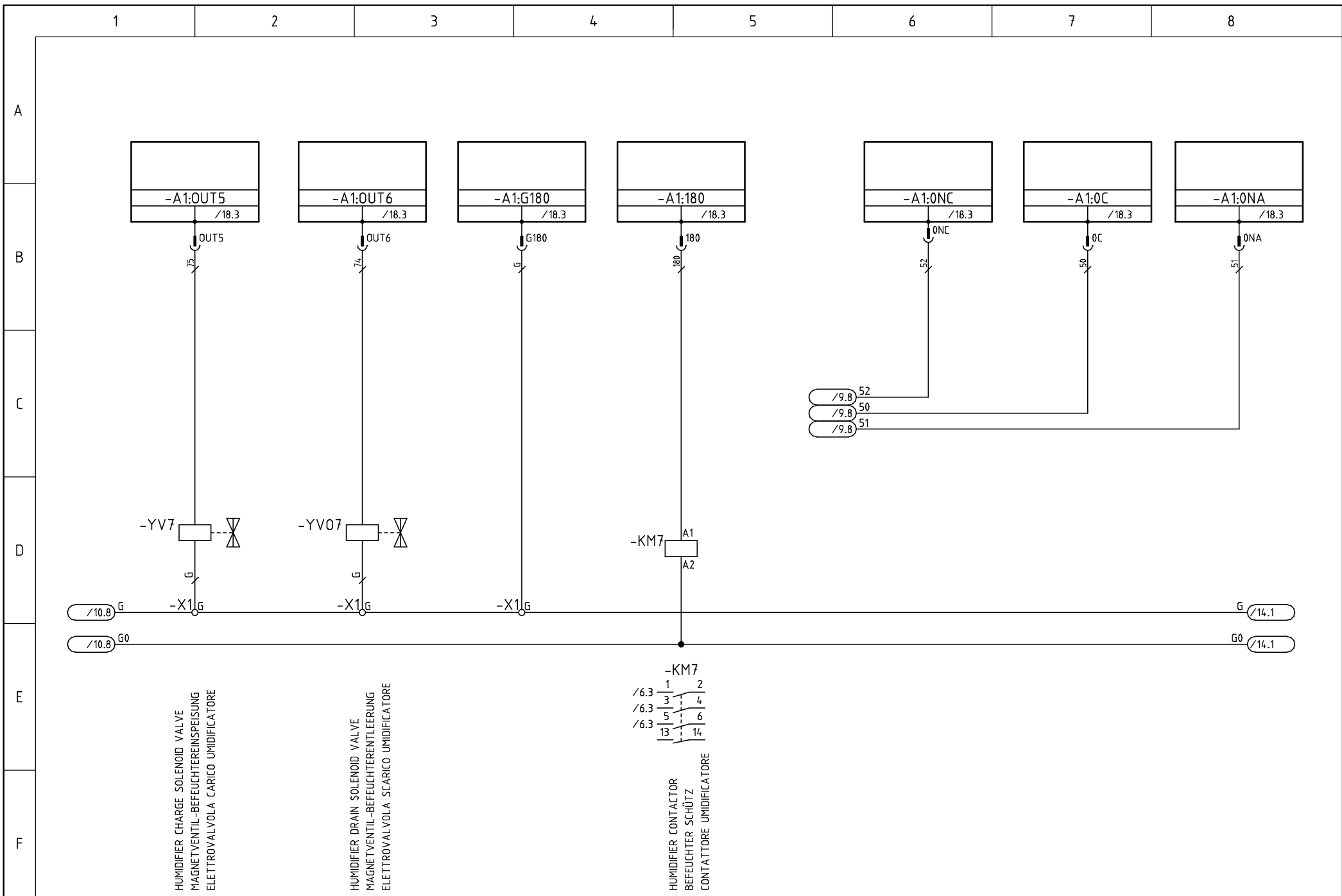
c		Date	07.06.2001	Wiring diagram name			Code	F+C+H	400/380 V $\sqrt{3}$ /60 Hz	Auxiliaries 24V
b		Signature	E.A.	318818B			318818			
a		Contr.	G.G.					TYPE:	HIMOD 28-34DX	2 Schema
Modification	Date	Date	Norm.	EN60204-1	Replaced for:	Replaced by:	Origin:	File:	318818B	Sheet 8 of 27
									Continue	9



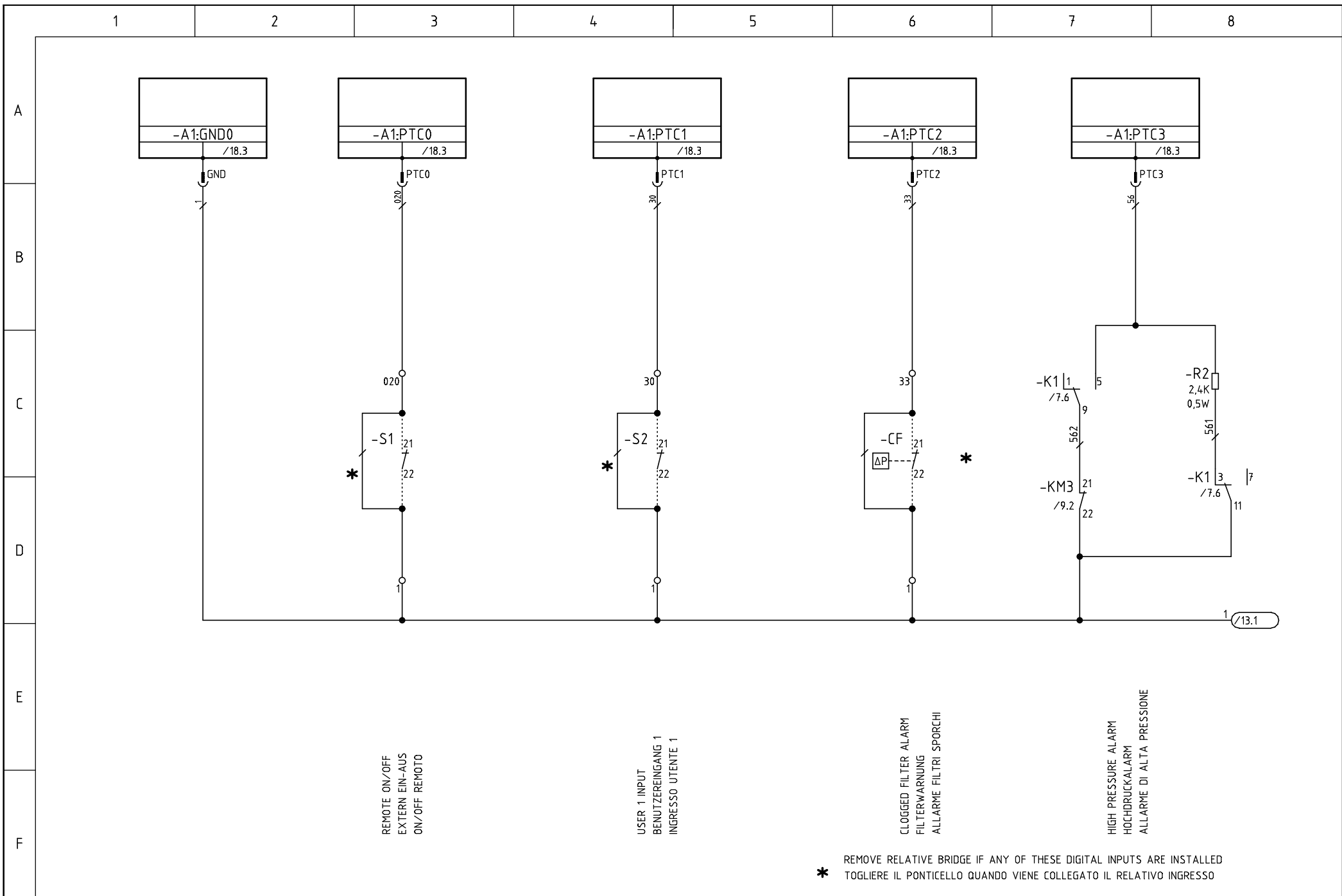
c		Date	07.06.2001	Wiring diagram name	Code	F+C+H	400/380 V $\sqrt{3}$ /60 Hz	Auxiliaries 24V
b		Signature	E.A.	318818B	318818			
a		Contr.	G.G.			TYPE: HIMOD 28-34DX	File: 318818B	2 Schema
Modification	Date	Date	Norm.	EN60204-1	Replaced for:	Replaced by:	Origin:	Sheet 9 of 27



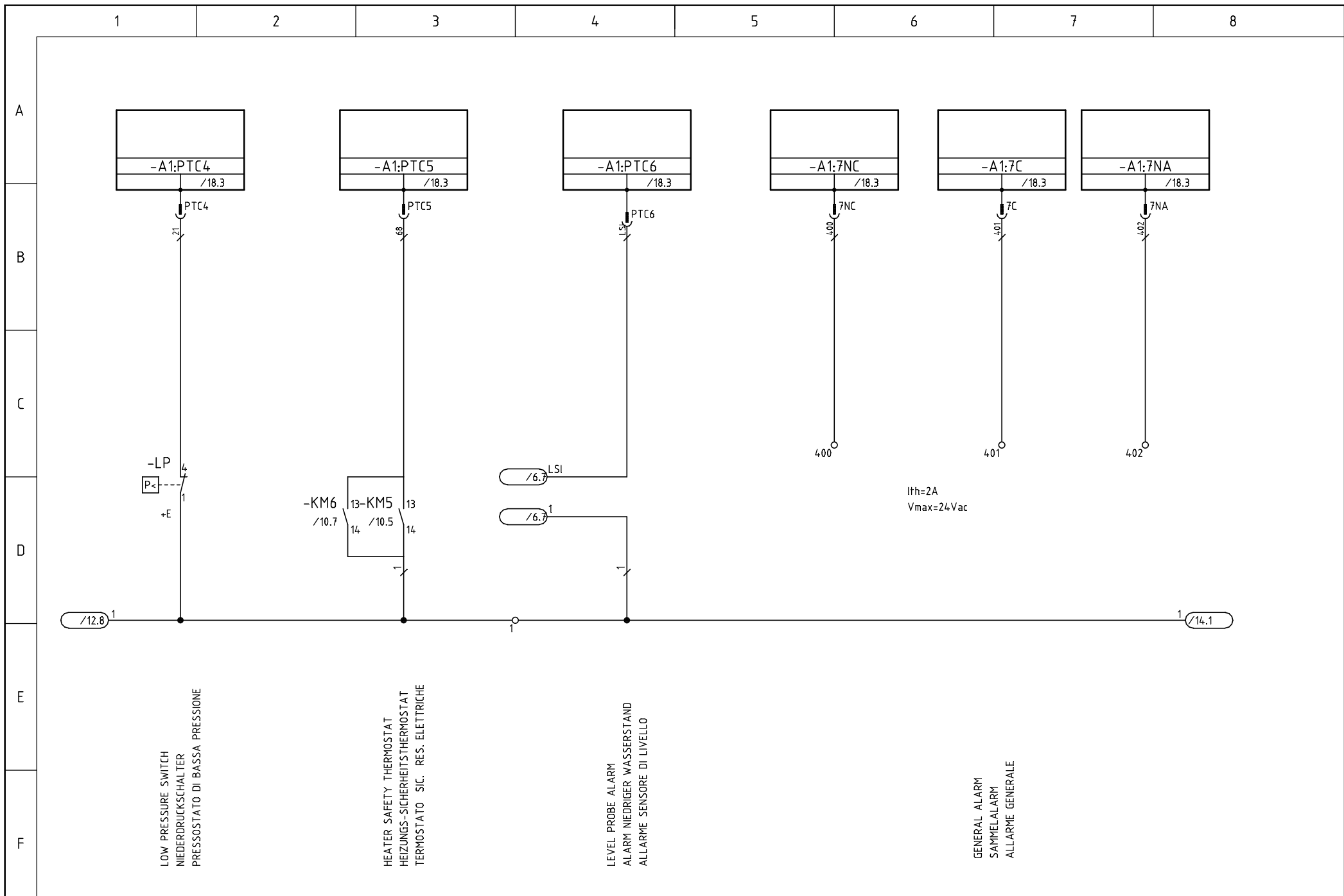
c		Date	07.06.2001	Wiring diagram name	Code	F+C+H	400/380 V $\sqrt{3}$ /60 Hz	Auxiliaries 24V		
b		Signature	E.A.	318818B	318818					
a		Contr.	G.G.			TYPE:	HIMOD 28-34DX	2 Schema		
Modification	Date	Date	Norm.	EN60204-1	Replaced for:	Replaced by:	Origin:	File: 318818B	Sheet 16 of 27	Continue 11



c		Date	07.06.2001	Wiring diagram name			Code	318818	F+C+H	400/380 V $\sqrt{3}$ /60 Hz	
b		Signature	E.A.	318818B			318818	F+C+H	400/380 V $\sqrt{3}$ /60 Hz	Auxiliaries 24V	
a		Contr.	G.G.							2 Schema	
Modification	Date	Date	Norm.	EN60204-1	Replaced for:	Replaced by:	Origin:	HIMOD 28-34DX	File: 318818B	Sheet 11 of 27	Continue 12



c		Date	07.06.2001	Wiring diagram name	Code	F+C+H	400/380 V $\sqrt{3}$ /60 Hz	Auxiliaries 24V	
b		Signature	E.A.	318818B	318818				
a		Contr.	G.G.			TYPE:	HIMOD 28-34DX	2 Schema	
Modification	Date	Date	Norm.	EN60204-1	Replaced for:	Replaced by:	Origin:	File: 318818B	
								Sheet 12 of 27	Continue 13



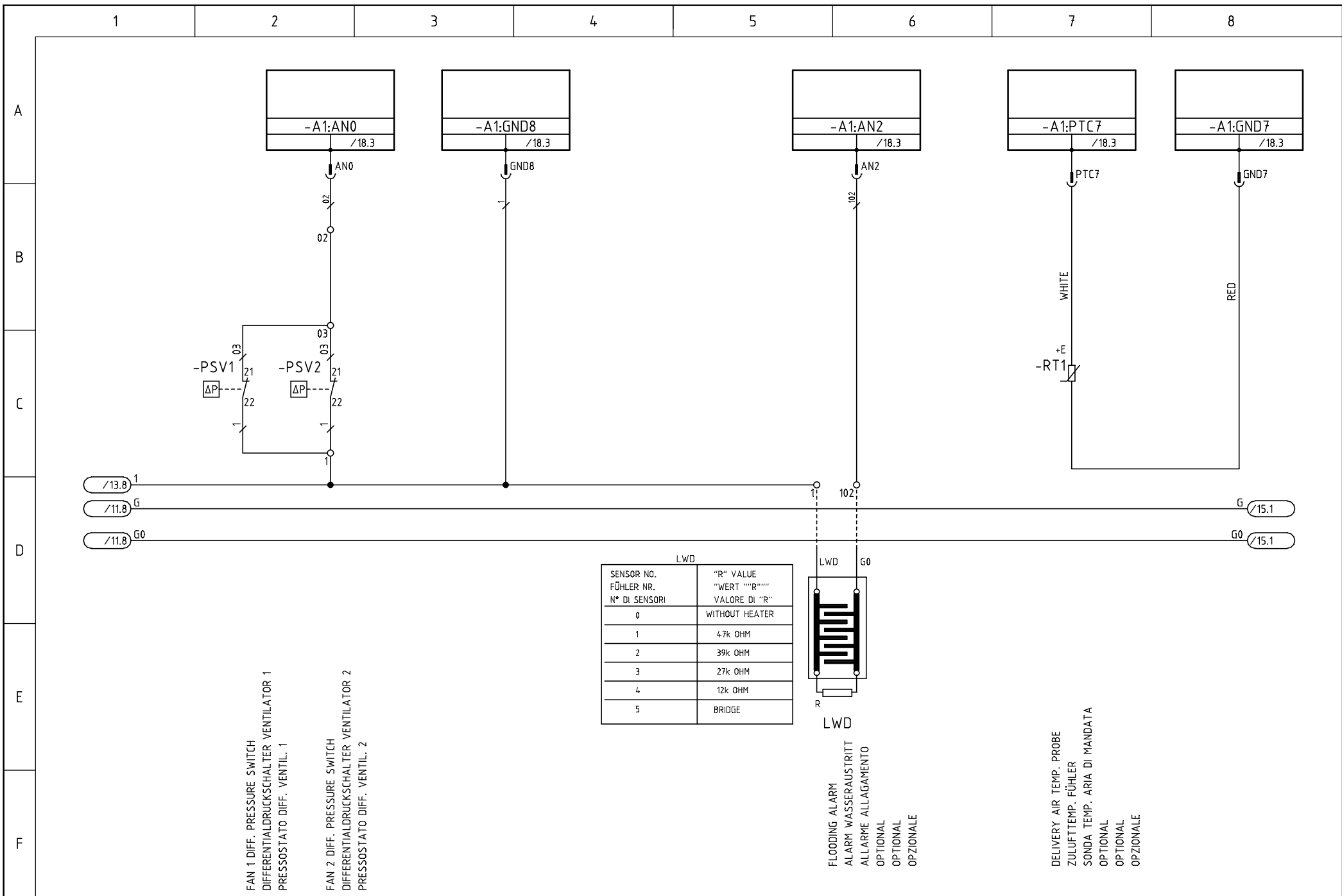
LOW PRESSURE SWITCH
NIEDERDRUCKSCHALTER
PRESSOSTATO DI BASSA PRESSIONE

HEATER SAFETY THERMOSTAT
HEIZUNGS-SICHERHEITSTHERMOSTAT
THERMOSTATO SIC. RES. ELETTTRICHE

LEVEL PROBE ALARM
ALARM NIEDRIGER WASSERSTAND
ALLARME SENSORE DI LIVELLO

GENERAL ALARM
SAMMELALARM
ALLARME GENERALE

c		Date	07.06.2001	Wiring diagram name			Code	318818	F+C+H	400/380 V $\sqrt{3}$ /60 Hz	Auxiliaries 24V
b		Signature	F.A.	318818B							
a		Contr.	G.G.								
Modification	Date	Date	Norm.	EN60204-1	Replaced for:	Replaced by:	Origin:	HIMOD 28-34DX	File:	318818B	2 Schema Sheet 13 of 27 Continue 14



FAN 1 DIFF. PRESSURE SWITCH
DIFFERENTIALDRUCKSCHALTER VENTILATOR 1
PRESSOSTATO DIFF. VENTIL. 1

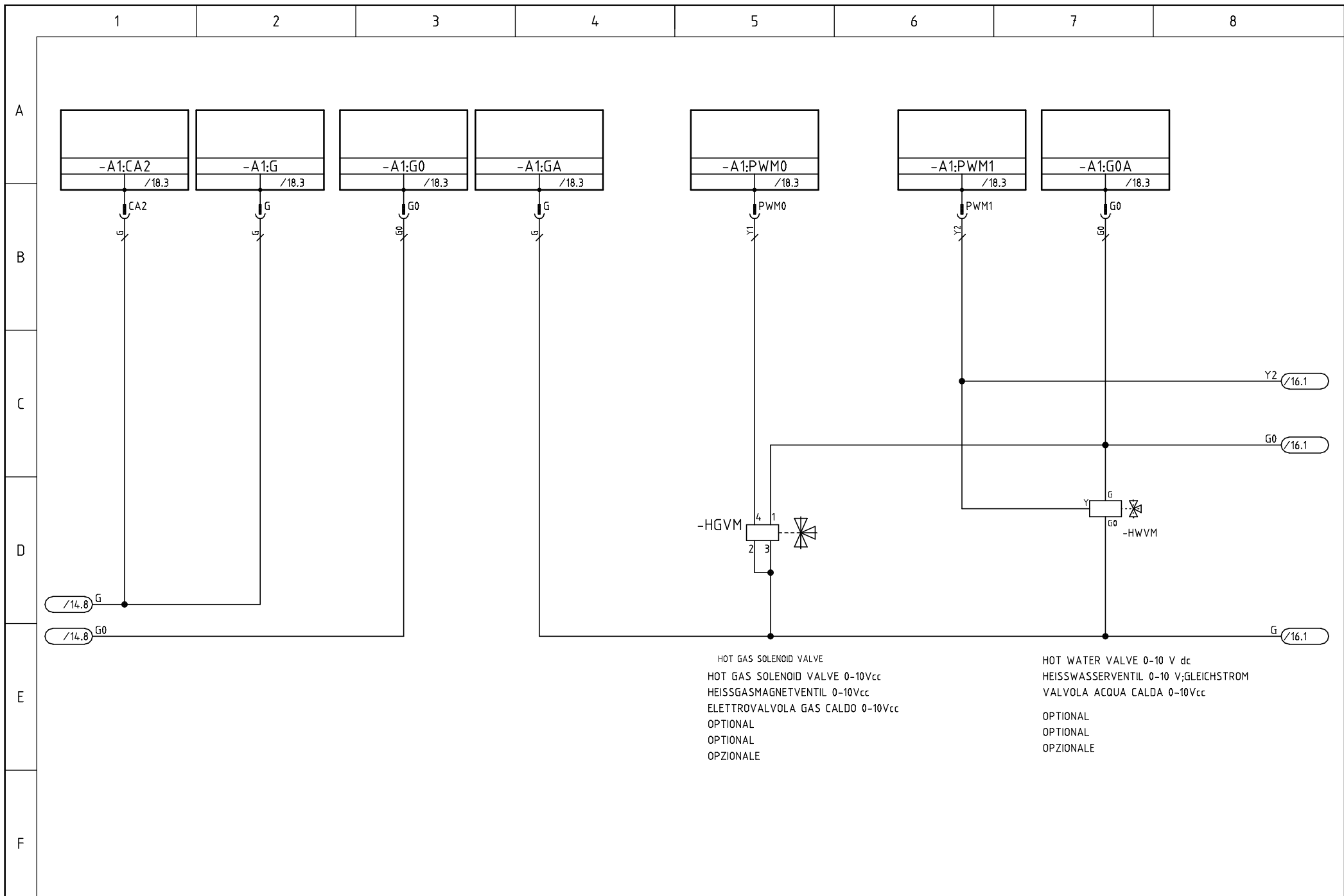
FAN 2 DIFF. PRESSURE SWITCH
DIFFERENTIALDRUCKSCHALTER VENTILATOR 2
PRESSOSTATO DIFF. VENTIL. 2

LWD	
SENSOR NO. FÜHLER NR. N° DI SENSORI	"R" VALUE "WERT" "R" VALORE DI "R"
0	WITHOUT HEATER
1	4.7k OHM
2	39k OHM
3	27k OHM
4	12k OHM
5	BRIDGE



FLOODING ALARM
ALARM WASSERAUSTRITT
ALLARME ALLAGAMENTO
OPTIONAL
OPTIONALE

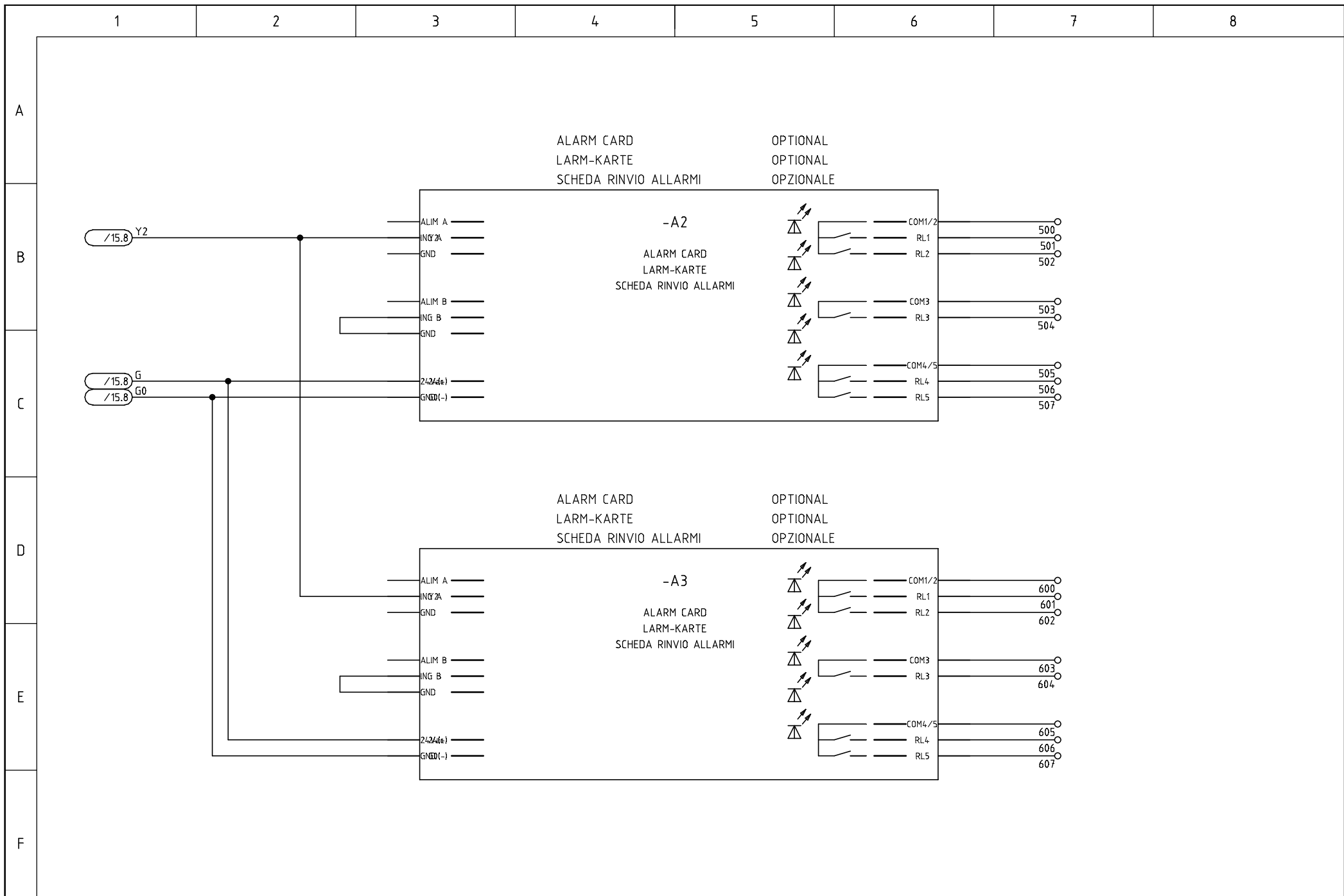
DELIVERY AIR TEMP. PROBE
ZULUFTTEMP. FÜHLER
SONDA TEMP. ARIA DI MANDATA
OPTIONAL
OPZIONALE



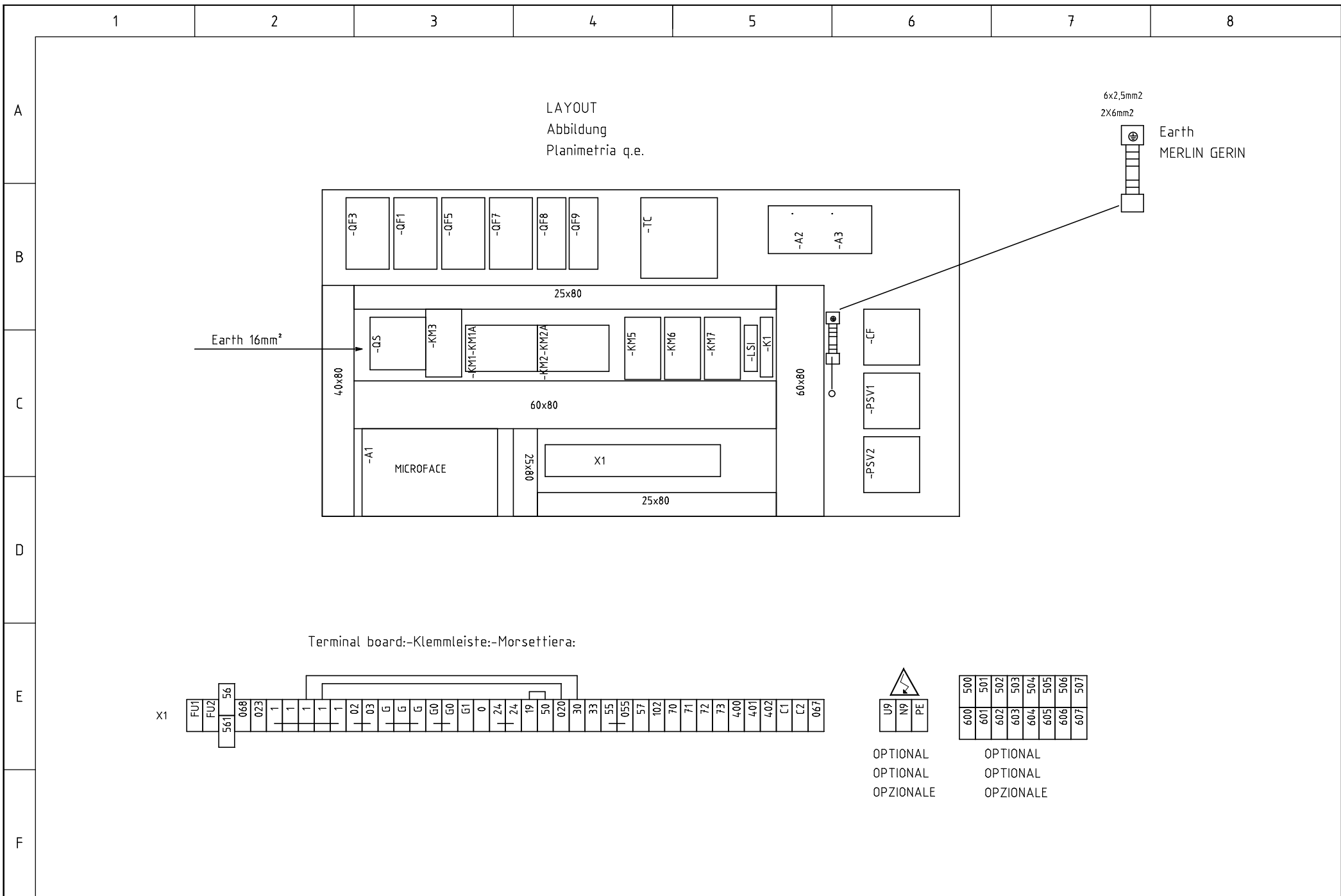
HOT GAS SOLENOID VALVE
HOT GAS SOLENOID VALVE 0-10Vcc
HEISSGASMAGNETVENTIL 0-10Vcc
ELETTRIVALVOLA GAS CALDO 0-10Vcc
OPTIONAL
OPTIONAL
OPZIONALE

HOT WATER VALVE 0-10 V dc
HEISSWASSERVENTIL 0-10 V;GLEICHSTROM
VALVOLA ACQUA CALDA 0-10Vcc
OPTIONAL
OPTIONAL
OPZIONALE

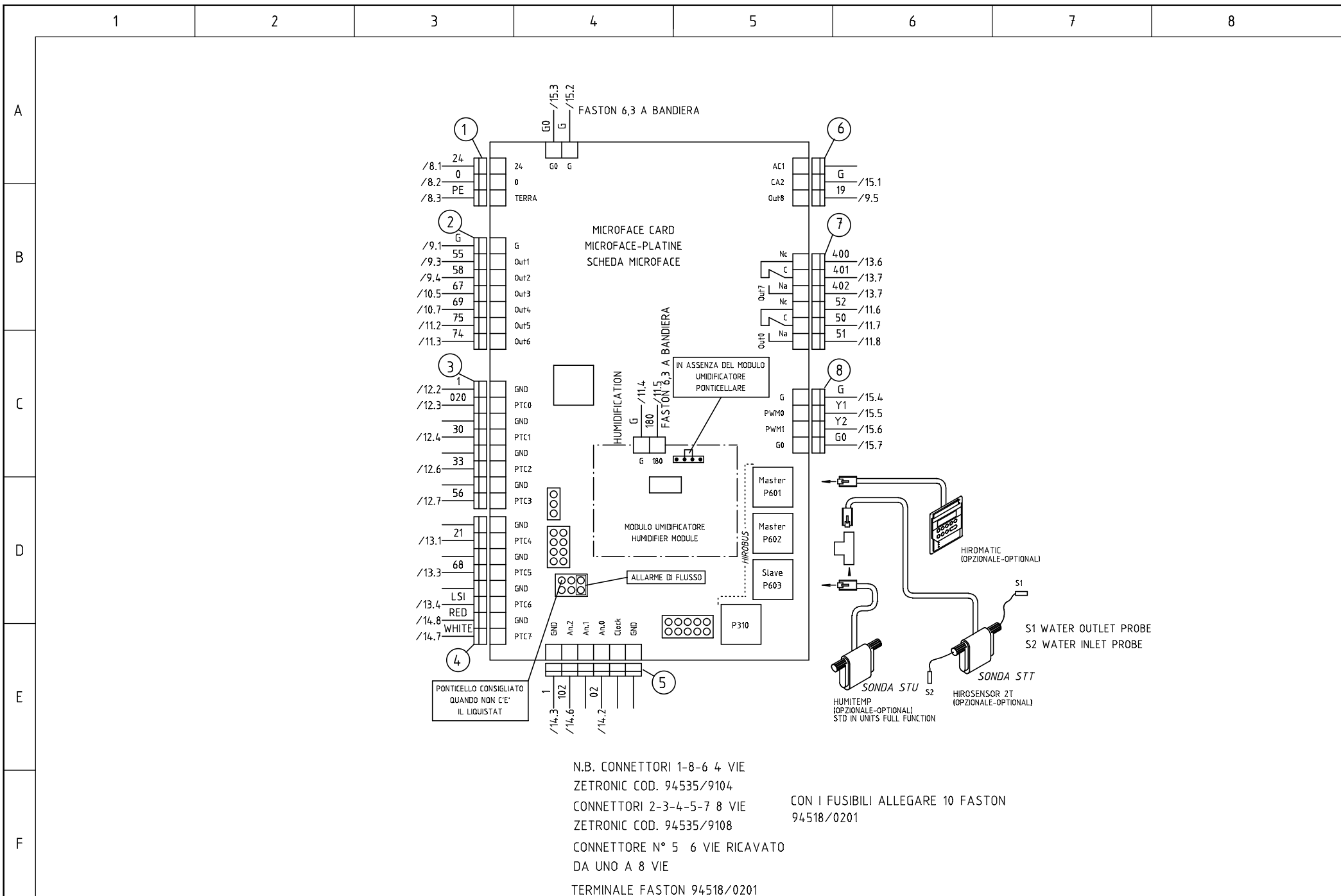
c		Date	07.06.2001	Wiring diagram name			Code	318818	F+C+H	400/380 V $\sqrt{3}$ /60 Hz	Auxiliaries 24V	
b		Signature	F.A.	318818B								
a		Contr.	G.G.									
Modification	Date	Date	Norm.	EN60204-1	Replaced for:	Replaced by:	Origin:	HIMOD 28-34DX	File: 318818B	2 Schema	Sheet 15 of 27	Continue 16



c			Date	07.06.2001	Wiring diagram name			Code	318818	F+C+H	400/380 V $\sqrt{3}$ /60 Hz		
b			Signature	F.A.	318818B						Auxiliaries 24V		
a			Contr.	G.G.						TYPE:	2 Schema		
	Modification	Date	Date	Norm.	EN60204-1	Replaced for:	Replaced by:	Origin:		File:	318818B	Sheet 16 of 27	Continue



c		Date	07.06.2001	Wiring diagram name		Code	318818	F+C+H	400/380 V $\sqrt{3}$ /60 Hz	
b		Signature	E.A.	318818B						LAYOUT
a		Contr.	G.G.							
Modification	Date	Date	Norm.	EN60204-1	Replaced for:	Replaced by:	Origin:	HIMOD 28-34DX	File: 318818B	3 Layout Sheet 17 of 27 Continue 18



N.B. CONNETTORI 1-8-6 4 VIE
ZETRONIC COD. 94535/9104
CONNETTORI 2-3-4-5-7 8 VIE
ZETRONIC COD. 94535/9108

CON I FUSIBILI ALLEGARE 10 FASTON
94518/0201

CONNETTORE N° 5 6 VIE RICAIVATO
DA UNO A 8 VIE
TERMINALE FASTON 94518/0201

c		Date	07.06.2001	Wiring diagram name	Code	F+C+H	400/380 V $\sqrt{3}$ /60 Hz		
b		Signature	E.A.	318818B	318818			LAYOUT	
a		Contr.	G.G.			TYPE:	HIMOD 28-34DX	3 Layout	
Modification	Date	Date	Norm.	EN60204-1	Replaced for:	Replaced by:	Origin:	File: 318818B	
								Sheet 18 of 27	Continue 19

1

2

3

4

5

6

7

8

A

B

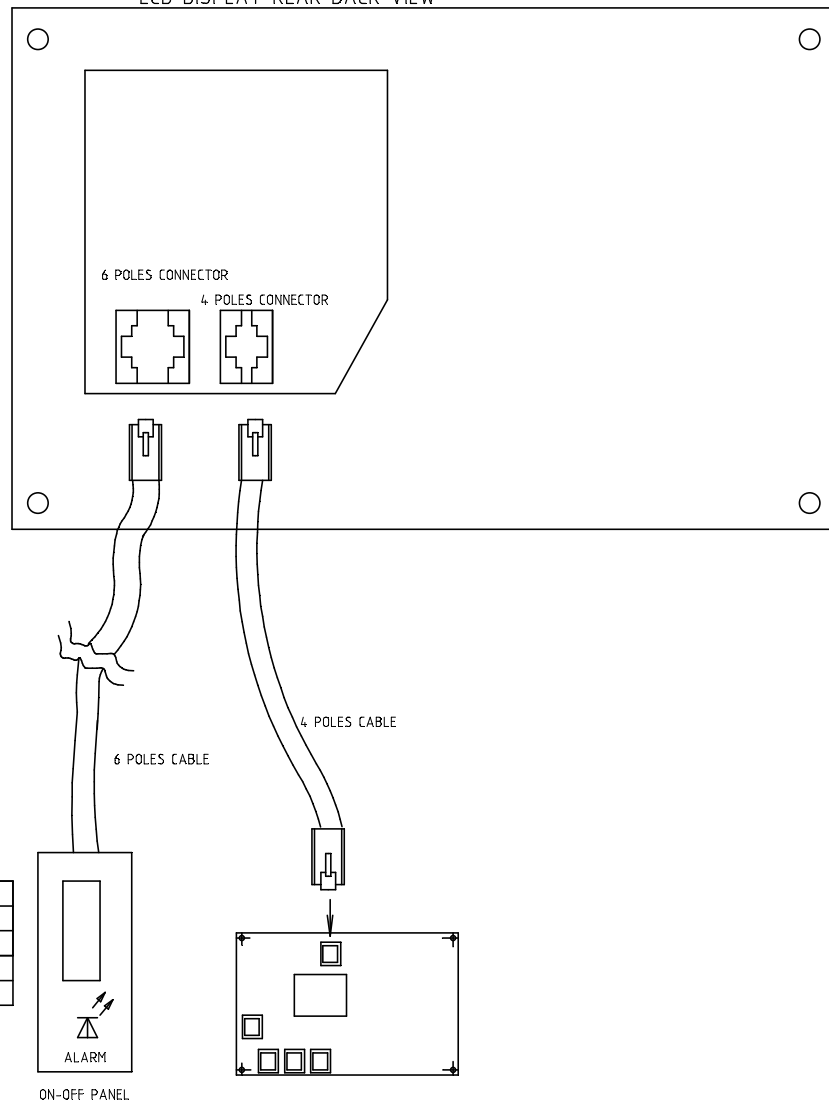
C

D

E

F

LCD DISPLAY REAR BACK VIEW



c			Date	07.06.2001	Wiring diagram name			Code	318818	F+C+H	400/380 V $\sqrt{3}$ /60 Hz		
b			Signature	F.A.	318818B							LAYOUT	
a			Contr.	G.G.						TYPE:	HIMOD 28-34DX	3 Layout	
	Modification	Date	Date	Norm.	EN60204-1	Replaced for:	Replaced by:	Origin:		File:	318818B	Sheet 19 of 27	Continue

1		2		3		4		5		6		7		8	
QUANTITY	ARTICLE CODE	DESCRIPTION				TECHNICAL DATA				CATALOGUE NO.	IDENTIFIER	RE.	MANUFACTURER	Code	
A	36	MICROFACE CARD MICROFACE-PLATINE SCHEMA MICROFACE									-A1	/18.3			
		FACTOR CORRECTION CAPACITOR KONDENSATOR BLINDSTROMKOMPENSATION CONDENSATORE DI RIFASAMENTO									-C2	/3.3			
		FACTOR CORRECTION CAPACITOR KONDENSATOR BLINDSTROMKOMPENSATION CONDENSATORE DI RIFASAMENTO									-C3	/4.2			
B		FACTOR CORRECTION CAPACITOR KONDENSATOR BLINDSTROMKOMPENSATION CONDENSATORE DI RIFASAMENTO									-C4	/4.6			
		CLOGGED FILTER ALARM FILTERWARNUNG ALLARME FILTRI SPORCHI									-CF	/12.6			
C		1st STEP ELECTRIC HEAT. ELEKTROHEIZUNG 1. STUFE RISC. ELETTR. 1° GRADINO									-EH5	/5.3			
		2nd STEP ELECTRIC HEAT. ELEKTROHEIZUNG 2. STUFE RISC. ELETTR. 2° GRADINO									-EH6	/5.5			
		HOT GAS SOLENOID VALVE HEISSGASMAGNETVENTIL ELETTROVALVOLA GAS CALDO									-HGVM	/15.5			
D		HIGH PRESSURE PRESSURE SWITCH HOCHDRUCKSCHALTER PRESSOSTATO DI ALTA PRESSIONE									-HP	/9.2			
		HOT WATER VALVE HEISSWASSERVENTIL VALVOLA ACQUA CALDA									-HWV	/10.2			
		HOT WATER VALVE 0-10 V dc HEISSWASSERVENTIL 0-10 V;GLEICHSTROM VALVOLA ACQUA CALDA 0-10Vcc									-HWVM	/15.7			
E		CONDENSING UNIT SUPPLY VERFLÜSSIGER STROMVERSORGUNG ALIMENTAZIONE UNITA' CONDENSANTE									-M1	/3.6			
		FAN 1 DIFF. PRESSURE SWITCH DIFFERENTIALDRUCKSCHALTER VENTILATOR 1 PRESSOSTATO DIFF. VENTIL. 1									-PSV1	/14.2			
		FAN 2 DIFF. PRESSURE SWITCH DIFFERENTIALDRUCKSCHALTER VENTILATOR 2 PRESSOSTATO DIFF. VENTIL. 2									-PSV2	/14.2			
F		REMOTE ON/OFF EXTERN EIN-AUS ON/OFF REMOTO									-S1	/12.3			
		USER 1 INPUT BENUTZEREINGANG 1 INGRESSO UTENTE 1									-S2	/12.4			
		ELECTR. HEAT. SAFETY THERMOSTAT SICHERUNGSTHERMOSTAT ELEKTROHEIZUNG THERMOST. SIC. RESIST. ELETTRICHE									-ST12	/10.5			

c	Date	08.06.2001	Wiring diagram name		Code	318818	F+C+H	400/380 Vac 50/60 Hz	COMPONENT LIST				
b	Signature	T.A.	318818B										
a	Contr.	G.G.					TYPE:	HIMOD 28-34DX	File:	318818B	4 Lista componenti	Sheet 20 of 27	Continue 21
Modification	Date	Date	Norm.	EN60204-1	Replaced for:	Replaced by:	Origin:						

1		2		3		4		5		6		7		8	
QUANTITY	ARTICLE CODE	DESCRIPTION				TECHNICAL DATA				CATALOGUE NO.	IDENTIFIER	RE.	MANUFACTURER	Code	
A		ELECTR. HEAT. SAFETY THERMOSTAT SICHERUNGSTHERMOSTAT ELEKTROHEIZUNG THERMOST. SIC. RESIST. ELETTRICHE									-ST13	/10.5			
		HUMIDIFIER CURRENT TRANSFORMER STROMWANDLER BEFEUCHTER TRASFORMATORE DI CORRENTE UMIDIFICATORE									-TA	/6.4			
		COMP. DELIVERY SAFETY T-STAT SICHERHEITSTHEMOSTAT AUSTRITT VERDICHTER T-STATO SICUREZZA MANDATA COMP.									-TSC	/9.3			
B		DAMPER MOTOR KLAPPENSTELLMOTOR MOTORE SERRANDA									-Y	/8.5			
		FREON SOLENOID VALVE MAGNETVENTIL-KÄLTEMITTEL ELETTROVALVOLA FREON									-YV1	/9.4			
		HOT GAS SOLENOID VALVE HEISSGASMAGNETVENTIL ELETTROVALVOLA GAS CALDO									-YV5	/10.2			
C		HUMIDIFIER CHARGE SOLENOID VALVE MAGNETVENTIL-BEFEUCHTEREINSPEISUNG ELETTROVALVOLA CARICO UMIDIFICATORE									-YV7	/11.2			
		HUMIDIFIER DRAIN SOLENOID VALVE MAGNETVENTIL-BEFEUCHTERENTLEERUNG ELETTROVALVOLA SCARICO UMIDIFICATORE									-YV07	/11.3			
		CRANKCASE HEATER KURBELWANNENHEIZUNG RESISTENZA CARTER									-EH3	/7.2			
D		HUMIDIFIER BEFEUCHTER UMIDIFICATORE									-EH7	/6.3			
		FAN 1 VENTILATOR 1 VENTILATORE 1									-EV1	/4.3			
		FAN 2 VENTILATOR 2 VENTILATORE 2									-EV2	/4.7			
E		FAN 1 INNER KLIXON KLIXON VENTILATOR 1 KLIXON INTERNO VENTILATORE 1									-FR1	/9.4			
		FAN 2 INNER KLIXON KLIXON VENTILATOR 2 KLIXON INTERNO VENTILATORE 2									-FR2	/9.7			
		LOW PRESSURE SWITCH NIEDERDRUCKSCHALTER PRESSOSTATO DI BASSA PRESSIONE									-LP	/13.1			
F		COMPRESSOR VERDICHTER COMPRESSORE									-M3	/3.4			
		INTEGRAL PROTECT. FOR COMP. 1 INNERER MOTORSCHUTZ VERDICHTER 1 PROTEZ. INTEGRALE COMP. 1									-PI	/7.6			

c		Date	08.06.2001	Wiring diagram name				Code	318818	F+C+H	400/380 Vac 50/60 Hz	COMPONENT LIST			
b		Signature	T.A.	318818B				318818	TYPE:	HIMOD 28-34DX	File: 318818B	4 Lista componenti			
a		Contr.	G.G.									Replaced for:			
Modification		Date	Date	Norm.	EN60204-1	Replaced for:		Replaced by:		Origin:		Sheet 21 of 27			
												Continue 22			

1		2		3		4		5		6		7		8		
QUANTITY	ARTICLE CODE	DESCRIPTION				TECHNICAL DATA				CATALOGUE NO.	IDENTIFIER	RE.	MANUFACTURER	Code		
A		AIR SUCTION TEMP. PROBE TEMPERATURFÜHLER LUFTANSAUG SONDA DI TEMP. ASP. ARIA									-RT1	/14.7				
		LEVEL PROBE WASSERSTANDSFÜHLER SENSORE DI LIVELLO									-SL	/6.4				
B	4	LA1-KN11	FAN 1 CONTACTOR VENTILATORMOTOR SCHÜTZ Nr 1 CONTATTORE VENTILATORE 1				LA1-KN11 PER MINICONTATTORE				LA1-KN11	-KM1-KM1A	/9.4	TELEMECANIQUE		
			FAN 1 CONTACTOR VENTILATORMOTOR SCHÜTZ Nr 1 CONTATTORE VENTILATORE 1				LA1-KN11 PER MINICONTATTORE				LA1-KN11	-KM1-KM1A	/9.4	TELEMECANIQUE		
			FAN 2 CONTACTOR VENTILATORMOTOR SCHÜTZ Nr 2 CONTATTORE VENTILATORE 2				LA1-KN11 PER MINICONTATTORE				LA1-KN11	-KM2-KM2A	/9.6	TELEMECANIQUE		
			FAN 2 CONTACTOR VENTILATORMOTOR SCHÜTZ Nr 2 CONTATTORE VENTILATORE 2				LA1-KN11 PER MINICONTATTORE				LA1-KN11	-KM2-KM2A	/9.6	TELEMECANIQUE		
C	4	LAD4VE	COMPRESSOR CONTACTOR VERDICHTER SCHÜTZ CONTATTORE COMPRESSORE				LAD4VE				LAD4VE	-KM3	/9.2	TELEMECANIQUE	254671	
			ELECTR. HEAT. CONTACTOR 1 ELEKTROHEIZUNG SCHÜTZ 1 CONTATTORE RISC. FLETTR. 1				LAD4VE				LAD4VE	-KM5	/10.5	TELEMECANIQUE	254671	
			ELECTR. HEAT. CONTACTOR 2 ELEKTROHEIZUNG SCHÜTZ 2 CONTATTORE RISC. FLETTR. 2				LAD4VE				LAD4VE	-KM6	/10.7	TELEMECANIQUE	254671	
D			HUMIDIFIER CONTACTOR BEFEUCHTER SCHÜTZ CONTATTORE UMIDIFICATORE				LAD4VE				LAD4VE	-KM7	/11.5	TELEMECANIQUE	254671	
	1	LBI 24	DAMPER CONTROL RELAY RELAIS KLAPPENREGELUNG RELE' COMANDO SERRANDA				LBI 24				LBI 24	-A4	/8.4	RINCK ELECTRONIC	255197	
	1	LC1D09B7	HUMIDIFIER CONTACTOR BEFEUCHTER SCHÜTZ CONTATTORE UMIDIFICATORE				24V AC, 1NA+1NC				LC1D09B7	-KM7	/11.5	TELEMECANIQUE	255816	
E	2	LC1D12B7	ELECTR. HEAT. CONTACTOR 1 ELEKTROHEIZUNG SCHÜTZ 1 CONTATTORE RISC. FLETTR. 1				24V AC, 1NA+1NC				LC1D12B7	-KM5	/10.5	TELEMECANIQUE		
			ELECTR. HEAT. CONTACTOR 2 ELEKTROHEIZUNG SCHÜTZ 2 CONTATTORE RISC. FLETTR. 2				24V AC, 1NA+1NC				LC1D12B7	-KM6	/10.7	TELEMECANIQUE		
	1	LC1D18B7	COMPRESSOR CONTACTOR VERDICHTER SCHÜTZ CONTATTORE COMPRESSORE				24V AC, 1NA+1NC				LC1D18B7	-KM3	/9.2	TELEMECANIQUE	255817	
F	2	LC2K0910B72+LA1-KN11	FAN 1 CONTACTOR VENTILATORMOTOR SCHÜTZ Nr 1 CONTATTORE VENTILATORE 1				24V AC 50/60Hz,2NA+1NC				LC2K0910B72	-KM1-KM1A	/9.4	TELEMECANIQUE		
			FAN 2 CONTACTOR VENTILATORMOTOR SCHÜTZ Nr 2 CONTATTORE VENTILATORE 2				24V AC 50/60Hz,2NA+1NC				LC2K0910B72	-KM2-KM2A	/9.6	TELEMECANIQUE		

c	Date	08.06.2001	Wiring diagram name		Code	318818	F+C+H	400/380 Vac 50/60 Hz	COMPONENT LIST				
b	Signature	T.A.	318818B										
a	Contr.	G.G.					TYPE:	HIMOD 28-34DX	File:	318818B	4 Lista componenti	Sheet 22 of 27	Continue 23
Modification	Date	Date	Norm.	EN60204-1	Replaced for:	Replaced by:	Origin:						

1		2		3		4		5		6		7		8		
QUANTITY	ARTICLE CODE	DESCRIPTION				TECHNICAL DATA				CATALOGUE NO.	IDENTIFIER	RE.	MANUFACTURER	Code		
A	1	LSI	LEVEL PROBE WASSERSTANDSFÜHLER SENSORE DI LIVELLO				LSI				275905	-LSI	/6.5	HIROSS	275905	
	1	LWD	FLOODING ALARM ALARM WASSERAUSTRITT ALLARME ALLAGAMENTO				LWD					-R	/14.5	HIROSS	275180	
	1	MKPC44/2	ANTI-NOISE FILTER ENTSTÖRFILTER FILTRO ANTIDISTURBO				MKPC44/2				MKPC44/2	-C5	/7.4	ARCOTRONICS	254324	
B	1	OHY2AJ	MAIN SWITCH HAUPTSCHALTER INTERRUTTORE GENERALE				OHY2AJ				OHY2AJ	-QS	/3.2	ABB		
	1	OT63E4	MAIN SWITCH HAUPTSCHALTER INTERRUTTORE GENERALE				OT63E4				OT63E4	-QS	/3.2	ABB		
	1	OX55X120	MAIN SWITCH HAUPTSCHALTER INTERRUTTORE GENERALE				OX55X120				OX55X120	-QS	/3.2	ABB		
C	1	RESISTENZA 2,4K	RESISTOR WIDERSTAND RESISTENZA				2,4K Toll. 1%					-R2	/12.8		255994	
	2	SCHEDA CISE ALLARMI	ALARM CARD LARM-KARTE SCHEDA RINVIO ALLARMI				SCHEDA CISE 124 5 RELE'					-A2	/16.3	HIROSS	275148	
			ALARM CARD LARM-KARTE SCHEDA RINVIO ALLARMI				SCHEDA CISE 124 5 RELE'					-A3	/16.3	HIROSS	275148	
D	2	SF520263	AUXILIARY FUSE 24 V SICHERUNG STEUERSTROMKREIS 24 V FUSIBILE AUSILIARI 24V				6.3A F				SF520263	-FU1	/7.4	OMEGA	254731	
			AUXILIARY FUSE 24 V SICHERUNG STEUERSTROMKREIS 24 V FUSIBILE AUSILIARI 24V				6.3A F				SF520263	-FU2	/7.4	OMEGA	254731	
	1	ZOCCOLO X 55,34	C1 THERMAL RELAY ALARM ALARM THERM.ÜBERSTROMRELAIS KREISLAUF 1 ALLARME TERMICA C1				94.44.1				94.44.1	-K1	/7.6	FINDER	000000	
E	1	51AT40K	FAN/S AUTOTRANSFORMER REGELTRAFO FÜR VENTILATOREN AUTOTRASFORMATORE VENTILATORE/1				6,7KVA				51AT40K	-TM	/4.3	MARINI	256299	
	1	51TMA53	TRANSFORMER TRANSFORMATOR TRASFORMATORE				130VA				51TMA53	-TC	/7.4	MARINI		
	1	55.34 8 024 5040	C1 THERMAL RELAY ALARM ALARM THERM.ÜBERSTROMRELAIS KREISLAUF 1 ALLARME TERMICA C1				55.34 24Vac contatti dorati l				55.34 8 024 5040	-K1	/7.6	FINDER	256171	
F	2	115 131.06+F6,3F	AUXILIARY FUSE 24 V SICHERUNG STEUERSTROMKREIS 24 V FUSIBILE AUSILIARI 24V				M4/8.SF GRIGIO				115 131.06	-FU1	/7.4	ENTRELEC	255716	
			AUXILIARY FUSE 24 V SICHERUNG STEUERSTROMKREIS 24 V FUSIBILE AUSILIARI 24V				M4/8.SF GRIGIO				115 131.06	-FU2	/7.4	ENTRELEC	255716	

c	Date	08.06.2001	Wiring diagram name				Code	318818	F+C+H	400/380 Vac 50/60 Hz	COMPONENT LIST				
b	Signature	T.A.	318818B												
a	Contr.	G.G.							TYPE:	HIMOD 28-34DX	File:	318818B	4 Lista componenti		
Modification	Date	Date	Norm.	EN60204-1	Replaced for:	Replaced by:	Origin:					Sheet	23 of 27	Continue	24

1		2		3		4		5		6		7		8		
QUANTITY	ARTICLE CODE	DESCRIPTION				TECHNICAL DATA				CATALOGUE NO.	IDENTIFIER	RE.	MANUFACTURER	Code		
A	1	24267	TRANSF. AUTOMATIC SWITCH AUTOMATIK-SCHALTER INTERR. AUTOMATICO TRASFORMATORE				6A 6KA "C"				24267	-QF8	/7.2	MERLIN GERIN		
	1	24268	CONDENSING UNIT AUTOMATIC SWITCH AUTOMATIKSCHALTER VERFLÜSSIGEREINHEIT INTERRUTTORE AUTOM. UNITA' CONDENSANTE				10A 6KA "C"				24268	-QF9	/3.6	MERLIN GERIN		
	1	24282	FAN AUTOMATIC SWITCH AUTOM. VENTILATORSCHALTER INTERRUTTORE AUTOM. VENTILATORE				10A 6KA "C"				24282	-QF1	/4.3	MERLIN GERIN		
B	1	24284	HUMIDIFIER AUTOM. SWITCH AUTOM. SCHALTER BEFEUCHTER INTERR. AUTOM. UMIDIFICATORE				16A 6KA "C"				24284	-QF7	/6.3	MERLIN GERIN		
	1	24285	HEATER AUTOM. SWITCH AUTOM. SCHALTER HEIZUNG INTERR. AUTOM. RESISTENZE				20A 6KA "C"				24285	-QF5	/5.3	MERLIN GERIN		
	1	25133	COMPRESSOR AUTOMATIC SWITCH AUTOMATIKSCHALTER VERDICHTER INTERRUTTORE AUTOMATICO COMPRESSORE				25A 10KA "D"				25133	-QF3	/3.4	MERLIN GERIN		
C																
D																
E																
F																

c	Date	08.06.2001	Wiring diagram name			Code	318818	F+C+H	400/380 Vac 50/60 Hz	COMPONENT LIST				
b	Signature	T.A.	318818B											
a	Contr.	G.G.												
Modification	Date	Date	Norm.	EN60204-1	Replaced for:	Replaced by:	Origin:	TYPE:	HIMOD 28-34DX	File:	318818B	4 Lista componenti	Sheet 24 of 27	Continue

1

2

3

4

5

6

7

8

A

REVISION INDEX

Revision date

REVISION INDEX

Description

Signature

07/06/01

B

MODIFICATO RELE' K1 E CABLAGGIO PAG. 12
MODIFICATA SEZIONE CAVI G-P-Q-Q1-R VENTILATORI E LUNGHEZZA

T.A.

B

C

D

E

F

c			Date	07.06.2001		Wiring diagram name	Code	F+C+H	400/380 Vac 50/60 Hz		
b			Signature	T.A.		318818B	318818			318818B	
a			Contr.	G.G.							
Modification	Date	Date	Norm.	EN60204-1	Replaced for:	Replaced by:	Origin:	HIMOD 28-34DX	File: 318818B	5 REVISIONI Sheet 25 of 27	Continue

1

2

3

4

5

6

7

8

CERTIFICATO DI COLLAUDO REQUISITI SPECIALI

IN AGGIUNTA AI CONTROLLI /COLLAUDI PRESCRITTI CON CHECK LIST N° 9 REV. CORRENTE

	PAGINA	DESCRIZIONE MODIFICA	DESCRIZIONE TEST/COLLAUDO FUNZIONALE RICHIESTO	RISULTATO TEST/ COLLAUDO	NOTE	COLLAUDATO DA DATA/FIRMA
1		ATTENZIONE CON MATERIALE AEG INSERIRE SU TUTTI I CONTATTORI I FILTRI RC				
2						
3						
4						
5						

NOTE AGGIUNTIVE /ULTERIORI TEST DEFINITI DAL FORNITORE A SEGUITO PROPRIA ANALISI TECNICA

.....

ATTENZIONE IL PRESENTE CERTIFICATO DEVE ESSERE STACCATO DALLO SCHEMA E ALLEGATO ALLA CHECK LIST DI CONTROLLO /COLLAUDO Q.E. PER SUCCESSIVO ARCHIVIO LIEBERT HIROSS

c		Date	07.06.2001	Wiring diagram name	Code	F+C+H	400/380 V 50/60 Hz	
b		Signature	T.A.	318818B	318818			318818B
a		Contr.	G.G.			TYPE:	HIMOD 28-34DX	6 PER QUADRISTA
	Modification	Date	Norm.	Replaced for:	Replaced by:	Origin:	File: 318818B	Sheet 26 of 27 Continue 27

1

2

3

4

5

6

7

8

A

QUESTO FOGLIO NON DEVE COMPARIRE ALL'INTERNO DELLO SCHEMA

B

C

D

E

F

	UTENZA	NUMERO	LUNGHEZZA CAVI	TERMIN.	CAVO TIPO NPI
A	C1	UVW.3+PE	4x4mm ² L=3500mm	OCCHIELLO ⁰⁵ 1 OCCHIELLO ⁰⁶ PER TERRA	3x4mm ² +T CAVO DA COMM.
D	YV1	58-G	2x1 mm ² L=3400mm		CAVO TIPO NPI
E	HP1	055-57	2x1 mm ² L=3700mm		CAVO TIPO NPI
F	ST12	023-G	2x1 mm ² L=1000mm	FASTON 6,3	CAVO TIPO NPI
F1	ST13	068-023	2x1 mm ² L=1500mm	FASTON 6,3	CAVO TIPO NPI
G	TM	R3-R4-R5-R20-PE S3-S4-S5-S20 T3-T4-T5-G0-G1	4x1.5mm ² L=1370mm+PE 4x1.5mm ² L=1230mm 5x1.5mm ² L=1080mm	NUMERARE CON ANELLI	PUNTALI 1 OCCHIELLO ⁰⁵ PER TERRA IN CALZA
G1	SBU	SL UVW.7+PE	5x2.5mm ² L=3700mm	PUNTALI	1 OCCHIELLO ⁰⁵ PER TERRA 4x2.5mm ² +T NPI CAVO DA COMMERCIO
H	YV7	75-G	2x1 mm ² L=3400mm	FASTON 6,3	CAVO TIPO NPI
I	EH3	RS.2+T	2x1.5mm ² +T L=3500mm	PUNTALI	2x1.5mm ² +T NPI CAVO DA COMMERCIO
L	LP	1-21	2x1 mm ² L=3800mm		CAVO TIPO NPI
M	YV07	74-G	2x1 mm ² L=3400mm	FASTON 6,3	CAVO TIPO NPI
P	EV1	UVW.1+PE	3x1.5mm ² L=2700mm+PE	PUNTALI	3x1.5mm ² +T NPI CAVO DA COMMERCIO
Q	EV2	UVW.2+PE	3x1.5mm ² L=2700mm+PE	PUNTALI	3x1.5mm ² +T NPI CAVO DA COMMERCIO
Q1	FR1	054-G1	2 x 1mm ² L=2700mm	PUNTALI	2x1mm ² NPI CAVO DA COMMERCIO
R	FR2	056-G1	2 x 1mm ² L=2700mm	PUNTALI	2x1mm ² NPI CAVO DA COMMERCIO
S	LSI	1-LS1-V7	2 x 1mm ² L= 150mm VEDI POSIZ. QE FORNIRE CABLATO		2 ROSSI+1 NERO
T	PI	057-0-24	3x1.5mm ² L=3500mm	FASTON 6,3 A BANDIERA	
U	PSV1	1-03	2 x 1mm ² L=900mm	FORCINA	2x1mm ² NPI CAVO DA COMMERCIO
V	PSV2	03-1	2 x 1mm ² L=900mm	FORCINA	2x1mm ² NPI CAVO DA COMMERCIO
W	CF	1-33	2x1mm ² L=1000mm	FORCINA	2x1mm ² NPI CAVO DA COMMERCIO

c		Date	07.06.2001	Wiring diagram name			Code	318818B	F+C+H	400/380 V $\sqrt{3}$ /60 Hz	318818B	
b		Signature	E.A.	318818B								
a		Contr.	G.G.						TYPE:	HIMOD 28-34DX	6 PER QUADRISTA	
	Modification	Date	Norm.	EN60204-1	Replaced for:	Replaced by:	Origin:		File:	318818B	Sheet 27 of 27	Continue 28

1

2

3

4

5

6

7

8

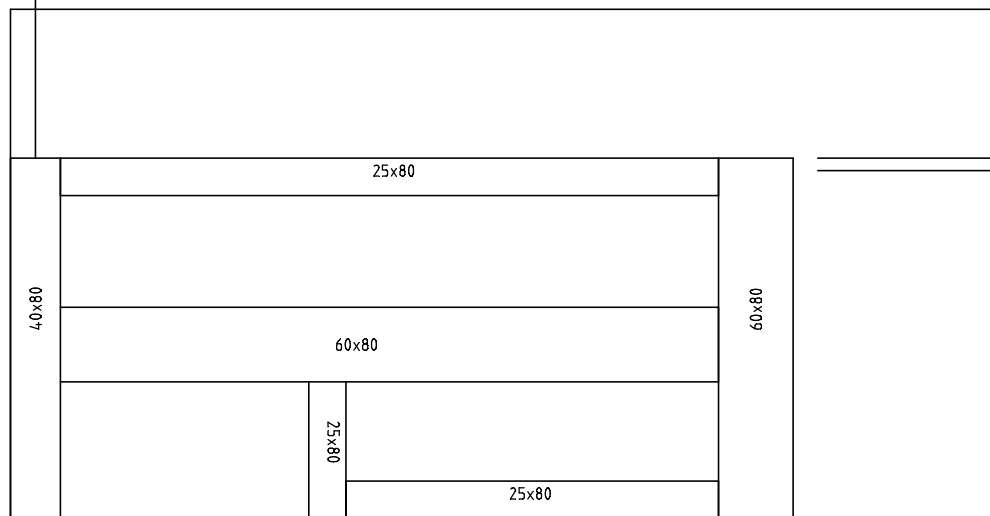
A

QUESTO FOGLIO NON DEVE COMPARIRE ALL'INTERNO DELLO SCHEMA

B

FILO G.V. L=200mm 6mm² CON OCCHIELLO DA 6

C



D

USCITA CAVI A-E-I-L-P-Q-Q1-R-T

E

FILO G.V. 6mm² L=1100mm CON OCCHIELLO D.=6

FILO G.V. 6mm² L=1100mm CON OCCHIELLO D.=6

F

FILO G.V. 6mm² L=600mm CON FASTON 6,3

USCITA CAVI F-F1-G-U-V-D-G1-N-H-W

c		Date	07.06.2001	Wiring diagram name			Code	318818	F+C+H	400/380 V $\sqrt{3}$ /60 Hz	318818B
b		Signature	F.A.	318818B							
a		Contr.	G.G.								
Modification	Date	Date	Norm.	EN60204-1	Replaced for:	Replaced by:	Origin:		HIMOD 28-34DX	File: 318818B	6 PER QUADRISTA Sheet 28 of 27 Continue