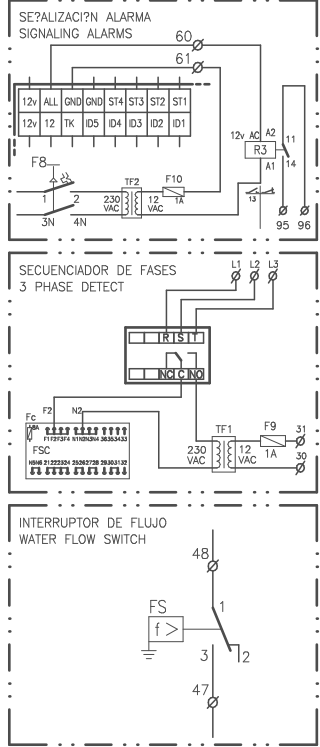


ELEMENTOS OPCIONALES
OPTIONAL ELEMENTS

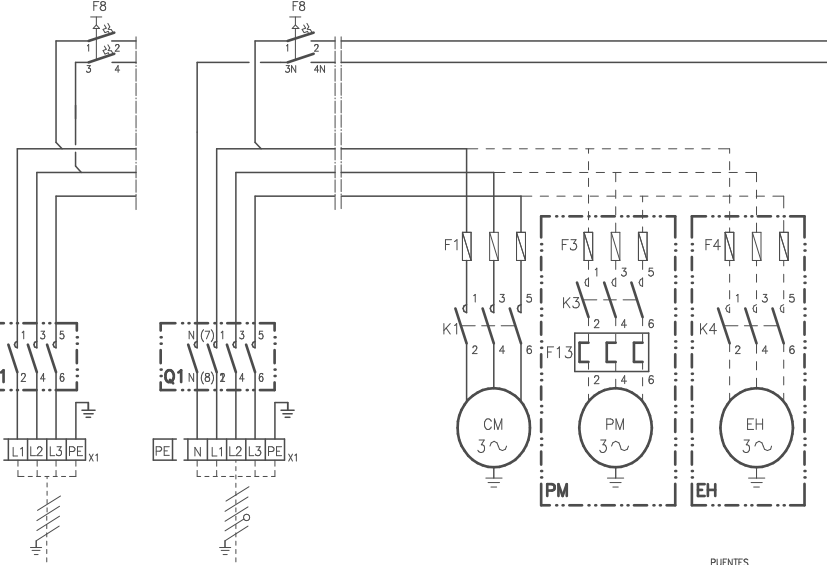


LEYENDA
LEGEND

- Cd Condensador / Capacitor
- CM Motor compresor / Compressor motor
- CFM Motor ventilador exterior / Compressor Fan motor
- CH Resistencia de carter / Crank cases heater
- F* Protecci?n t?rmica / Compressor thermal protection
- F1-4 Fusibles / Fuses
- F6 T?rmico del ventilador / Fan thermal protection
- F8 Magnetot?rmico / Circuitbreaker
- F9-10 Fusible del secundario / Secondary fuse
- F13 Rel? T?rmico / Thermal Relay
- Fc Fusible del FSC / FSC fuse
- Fsc Control de condensaci?n / Fan speed control
- HP Presostato de alta / high pressure
- K1 Contactor compresor / Compressor contactor
- K3 Contactor Bomba Agua / Water Pump Contactor
- K4 Contactor EH / EH Contactor
- LM M?dulo control / Logic modul
- LP Presostato baja / Low pressure
- ST1 Sonda entrada agua / Inlet water sensor
- ST2 Sonda salida agua / Outlet water sensor
- ST3 Sonda tuber?a / Piping sensor
- SV V?lvula solenoide / Solenoid valve
- TF1-2 Transformador / Transformer
- R3 Rel? alarma / Alarm Relay
- R4 Rel? antihielo / De-icing Relay
- WT Temperatura de agua / Water temperature
- WP Presi?n de agua / Water pressure

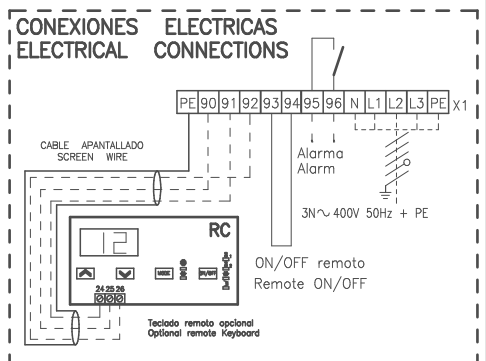
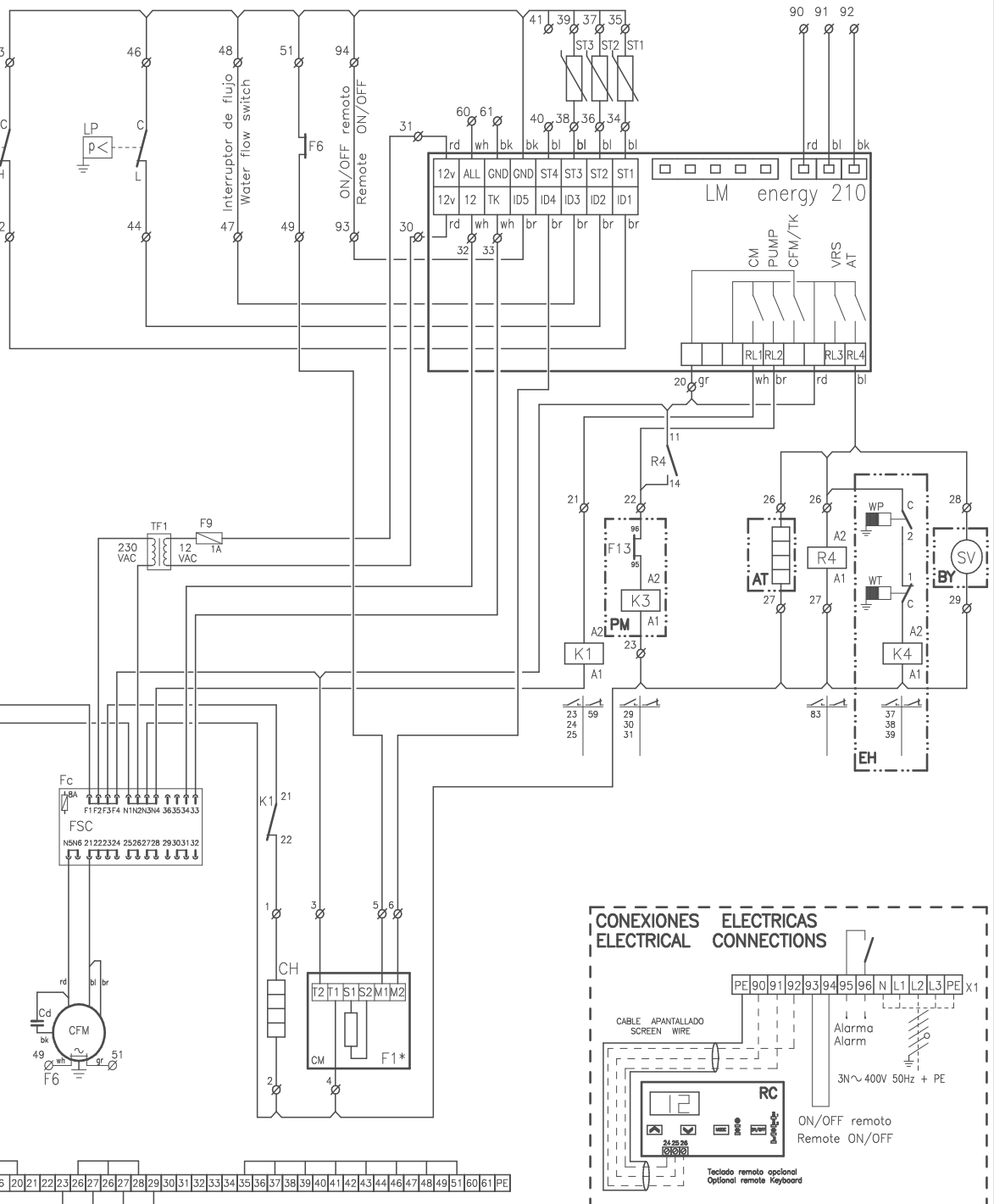
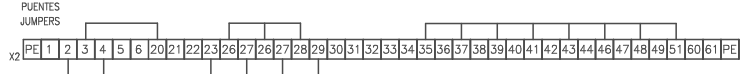
- AT Res. antihielo del evap. / Antifreeze evap. heater
- BY By-Pass gas caliente / Hot gas By-Pass
- EH Bat. el?c. tanque inercia / Elec. heater inertial tank
- FS Interruptor de flujo / Water flow switch
- Q1 Interruptor general / Main switch
- PM Motor bomba agua / Water pump motor
- RC Control remoto / Remote control

- CODIGO DE COLORES / COLOUR CODE
- | | |
|---------------------|----------------------|
| wh blanco / white | bk negro / black |
| gn verde / green | bl azul / blue |
| or naranja / orange | br marr?n / brown |
| rd rojo / red | yl amarillo / yellow |
| vi violeta / violet | gr gris / gray |



3 ~ 230V 50Hz + PE 3N ~ 400V 50Hz + PE

Fusibles	F1				F3
Fuses size	0251	0291	0351	0431	
230/3/50	40A	50A	63A	80A	6A
400/3/50	25A	25A	32A	40A	6A



Elemento Opcional
Optional Element
A Realizar por el Instalador
To Wire by the Installer