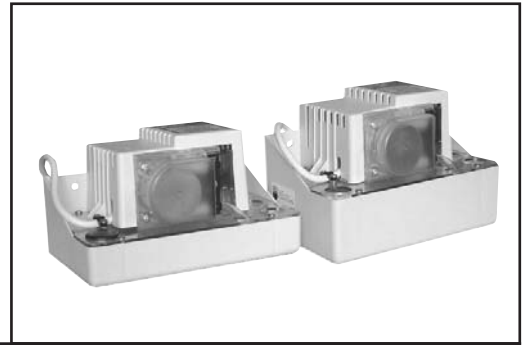


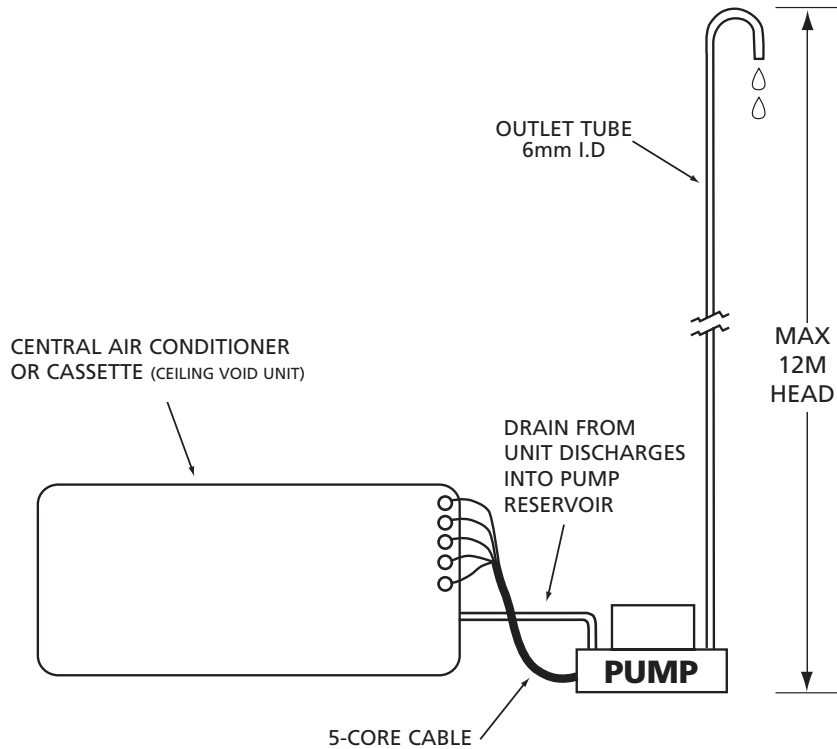
Hi-Lift tank Pump

Installation examples



Example 1:

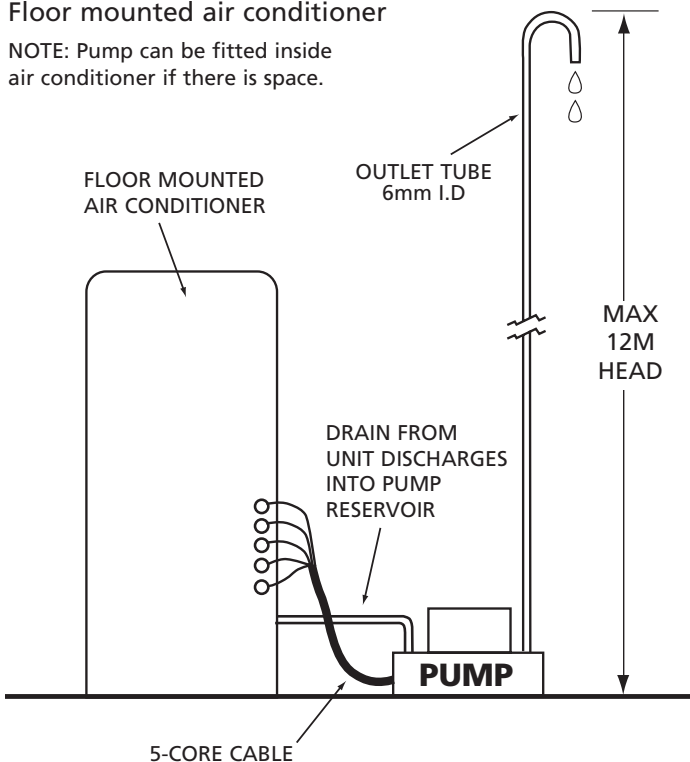
Central air conditioner or cassette (Ceiling void unit)



Example 2:

Floor mounted air conditioner

NOTE: Pump can be fitted inside air conditioner if there is space.



Electrical Connections

to aircon unit power supply:

- Brown**.....Live
- Blue**.....Neutral
- Green/yellow**..... Earth (Ground)

to control circuit:

- Black (2)**.....High Level switch*

*High level float inside pump will open a normally closed switch across the two black wires (max 4 amps). This can be used to switch the air conditioner off or to bring up an alarm to indicate that the pump has failed.

Control Method

Float level inside the pump reservoir will make the pump operate.

NOTE: DIAGRAMS ARE NOT TO SCALE