

0 5 10 15 20 25 30 35 40 45 50 55 60 65 70 75 80 85 90 95

INDICE	
REGLETERO CONEXIONES ELECTRICAS TERMINAL STRIP BORNIER DE CONNEXION ELECTRIQUE KLEMMLEISTE	HOJA 1/8
CIRCUITO POTENCIA POWER CIRCUIT CIRCUIT DE PUISSANCE STROMKREIS	HOJA 2-3/8
CIRCUITO MANIOBRA CONTROL CIRCUIT CIRCUIT DE CONTROL STUEERKREIS	HOJA 4/8
CONEXION OPCIONALES OPTIONS CONNEXIONS OPTIONNELS OPTIONEN / ZUBEHÖR	HOJA 5-6-7/8
LEYENDA REFERENCIAS REFERENCES LEGEND REFERENCE DE LEGENDE LEGENDE	HOJA 8/8

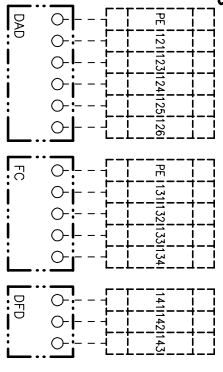


ESQUEMA ELECTRICO
WIRING DIAGRAM
SCHEMA ELECTRIQUE
SCHALTPLAN

Elemento Opcional
Optional Element
Element optionnel
Optionales bauteil

A realizar por el instalador
To wire by the installer
A câbler par l'installateur
Verdrahtung durch den installateur

0/8	Lennox Refrac S.A.	ESQUEMA ELECTRICO ELECTRIC DIAGRAM	ANCM 152D (LECM+KNCM) + KIT -15°C	4Z-33-421-218 10J 3N ~ 400V 50Hz + PE
------------	--------------------	---------------------------------------	--	--

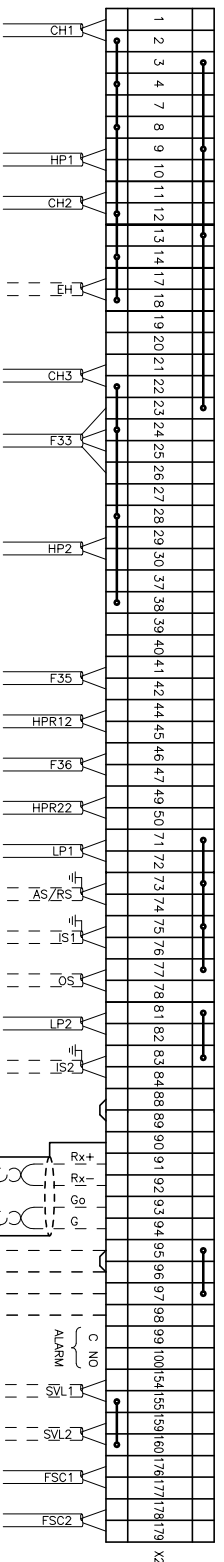
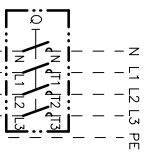


0 5 10 15 20 25 30 35 40 45 50 55 60 65 70 75 80 85 90 95

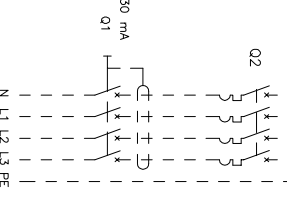
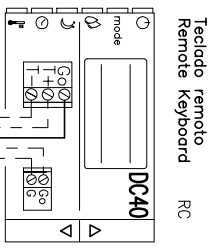
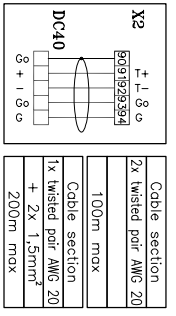
⚠ RETIRAR PUENTE SI SE MONTA ON/OFF REMOTO
 REMOVE LINK FOR REMOTE ON/OFF OPERATION
⚠ RETIRER LE PONT EN CAS DE MARCHÉ/ARRÊT A DISTANCE
 ENFERME DIE VERBINDUNG ZUM EIN/AUS FERNSCHALTER

ESTAS BORNAS SOLAMENTE SE INCLUYEN CON SU OPCIONAL
 THESE TERMINALS ARE ONLY INCLUDED WITH ITS OPTIONAL
 CES CONTACTS SONT INSTALLES SEULEMENT SI ON DEMANDE CHOISIT L'OPTION
 DIESE ANSCHLUSSKLEMMEN SIND NUR MIT ZUBEHÖR VERFÜGBAR IHREM OPTIONAL

VER MANUAL INSTALACION
 SEE INSTALLATION MANUAL (IOM)
 VOIR LE MANUEL D'INSTALLATION
 SIEHE INSTALLATIONSHANDBUCH (IOM)



⚠ ON/OFF REMOTO
 REMOTE ON/OFF
 FRIO/CALOR
 COOL/HEAT



⚠ CABLE APANTALLADO
 SHIELDED WIRE

Elemento Opcional
 Optional Element
 Element optionel
 Optionales bauteil

A realizar por el instalador
 To wire by the installer
 A câbler par l'installateur
 Verdrahtung durch den installateur

1/8
 Lemnox Refrac S.A.

ESQUEMA ELECTRICO
 ELECTRIC DIAGRAM

**ANCM 152D
 (LECM+KNCM) + KIT -15°C**

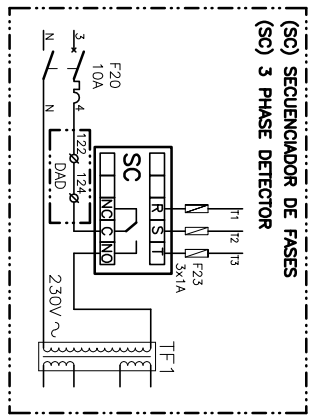
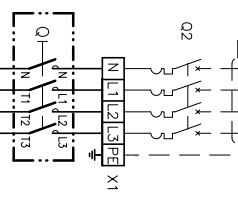
ALIMENTACION
 POWER SUPPLY
 ELECTRIQUE
 STROMZULEITUNG

3N~400V 50Hz+PE

4Z-33-421-218 10J
 3N ~ 400V 50Hz + PE

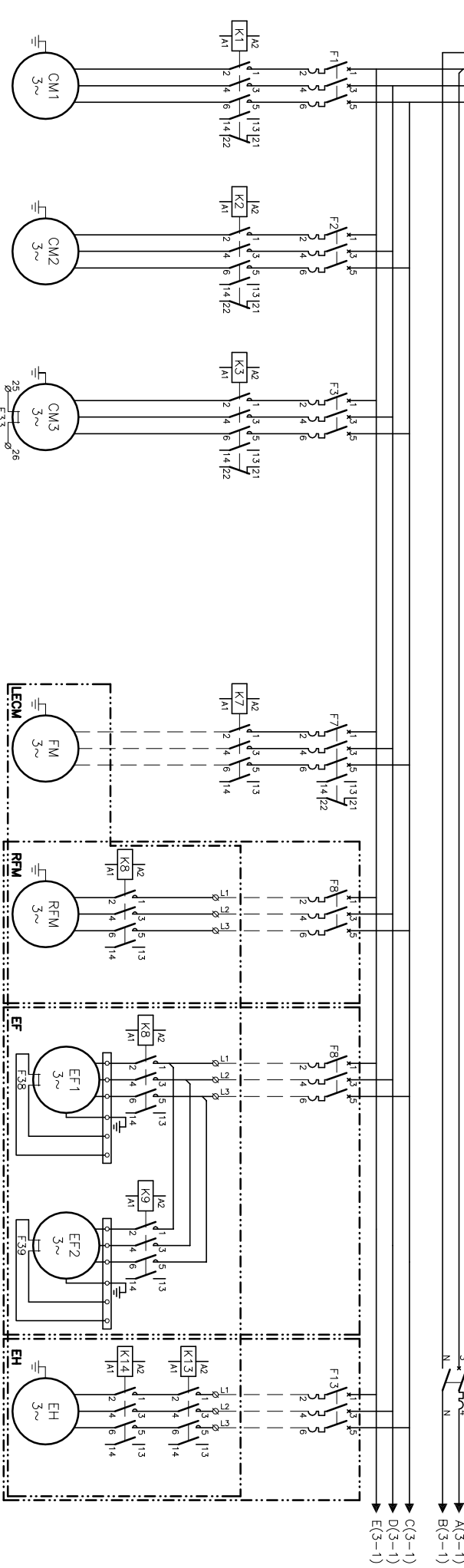
0 5 10 15 20 25 30 35 40 45 50 55 60 65 70 75 80 85 90 95

3N~400V 50Hz+PE
 N L1 L2 L3 PE
 VER MANUAL INSTALACION
 SEE INSTALLATION MANUAL (IOM)
 VOIR LE MANUEL D'INSTALLATION
 SIEHE INSTALLATIONSHANDBUCH (IOM)



30kW	Im(CC)	43.4A
1S	Iq(LRA)	50A
40kW	Im(CC)	57.8A
1S	Iq(LRA)	63A

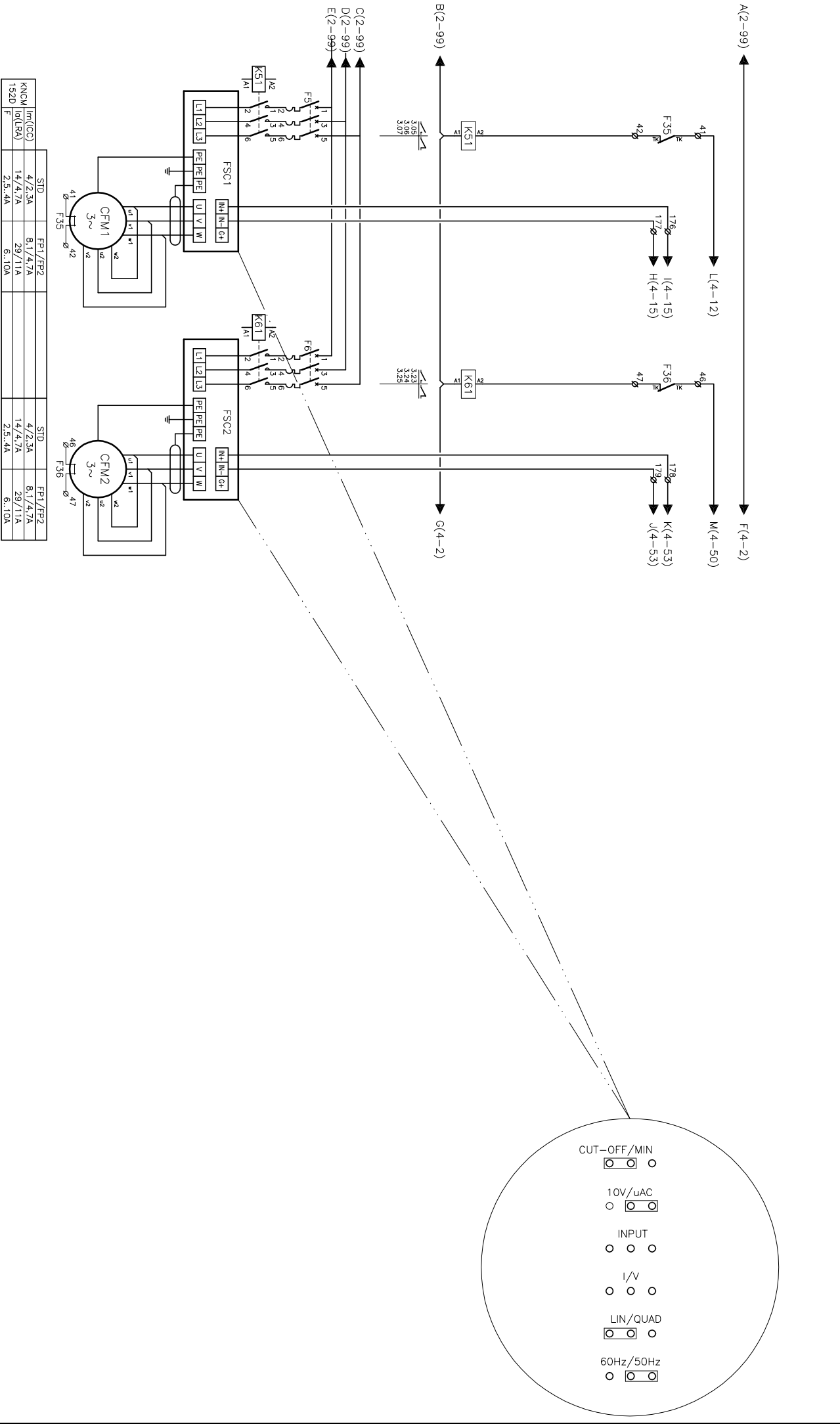
- CIRCUITO MANIOBRA
- CONTROL CIRCUIT
- CIRCUIT DE CONTROL
- STEUERKREIS



ANCM	Im(CC)	31A	22A	48.5A	11.1A	14.8A	4.5A	4.5A
152D	Iq(LRA)	198A	118A	272A	81A	109A	6.10A	
F		32A	32A	50A	9.14A	13.18A		

Elemento Opcional Optional Element Element optionnel Optionales bauteil								
A realizar por el instalador To wire by the installer A cobbler par l'installateur Verdringung durch den installateur	2/8	ESQUEMA ELECTRICO ELECTRIC DIAGRAM	ANCM 152D (LECM+KNCM) + KIT -15°C	4Z-33-421-218 10U 3N ~ 400V 50Hz + PE				

0 5 10 15 20 25 30 35 40 45 50 55 60 65 70 75 80 85 90 95



	STD	FP1/FP2	STD	FP1/FP2
KNCM Im(C)	4/2.3A	8.1/4.7A	4/2.3A	8.1/4.7A
152D Id(RA)	14/4.7A	29/11A	14/4.7A	29/11A
F	2.5..4A	6..10A	2.5..4A	6..10A

Elemento Opcional
 Optional Element
 Element optionnel
 Opcionales bauteil

A realizar por el instalador
 To wire by the installer
 A câbler par l'installateur
 Verdrahtung durch den installateur

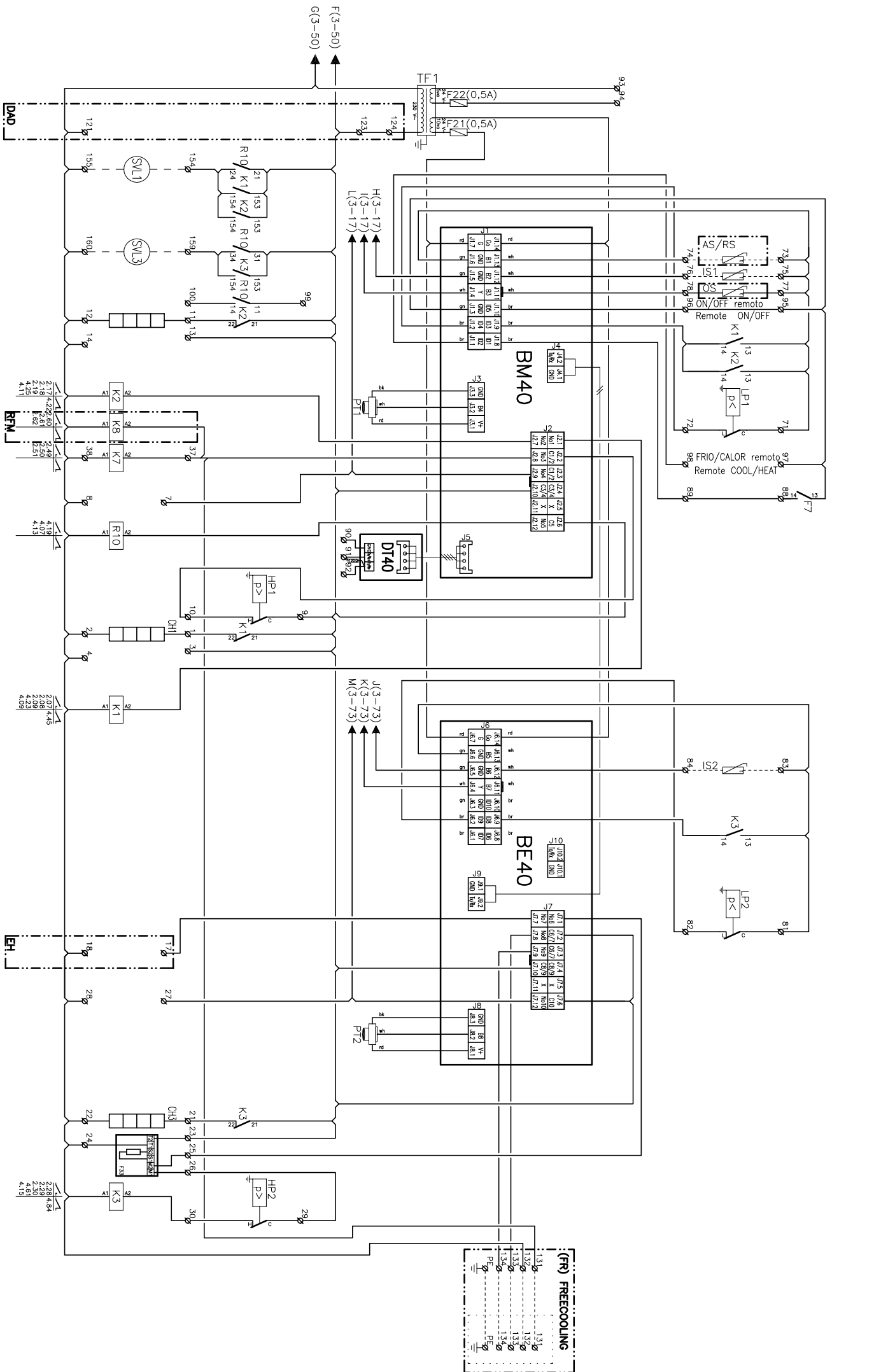
3/8

Lemnox Refrac S.A.

ESQUEMA ELECTRICO
 ELECTRIC DIAGRAM

ANCM 152D
 (LECM+KNCM) + KIT -15°C
 4Z-33-421-218 10J
 3N ~ 400V 50Hz + PE

0 5 10 15 20 25 30 35 40 45 50 55 60 65 70 75 80 85 90 95



Elemento Opcional
Optional Element
Element optionnel
Optionales bauteil

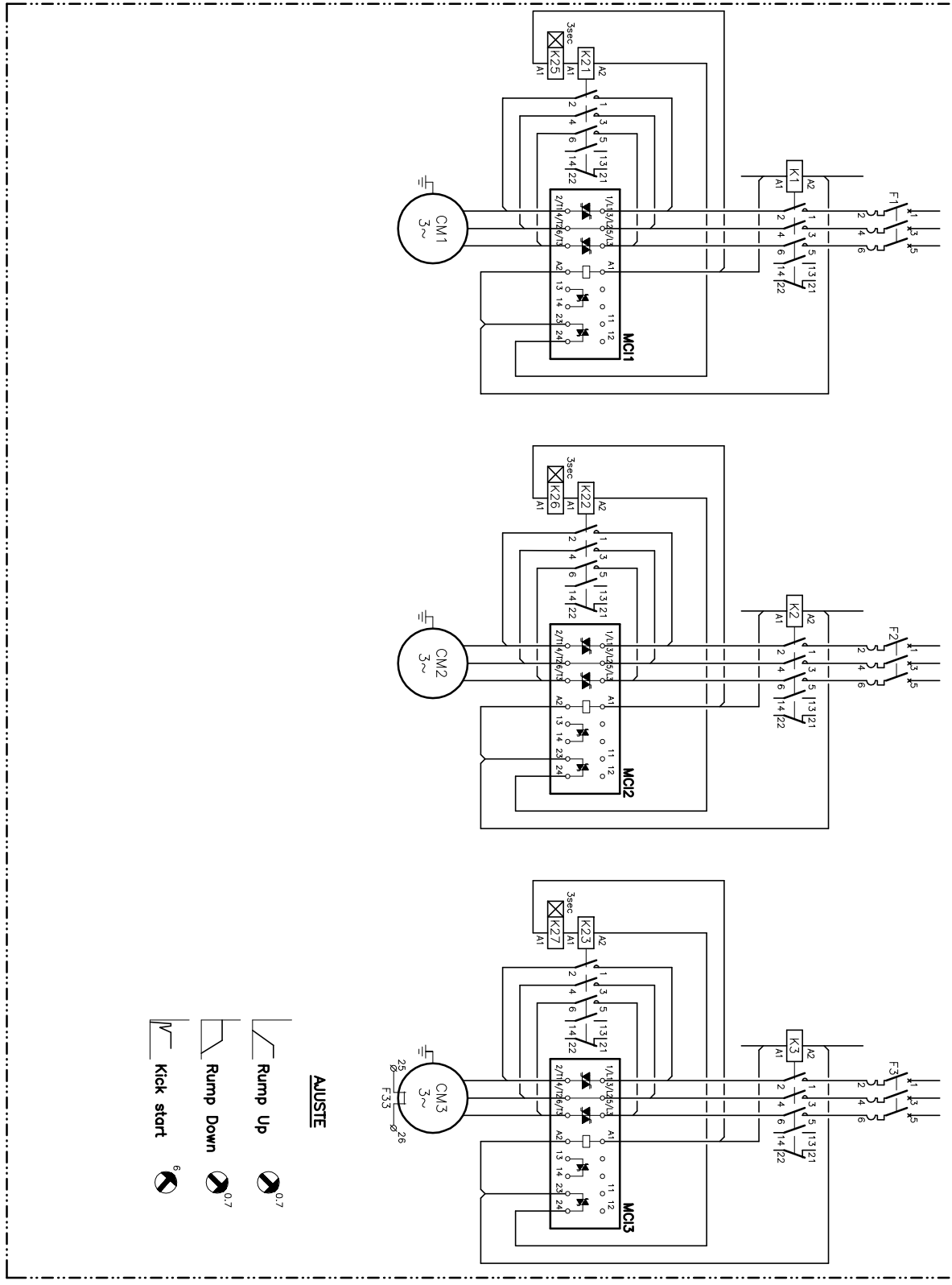
A realitzar por el instalador
To wire by the installer
A câbler por l'instalateur
Verdrahtung durch den installateur

4/8 Lennox Refrac S.A. ESQUEMA ELECTRICO ELECTRIC DIAGRAM ANCM 152D + KIT -15°C

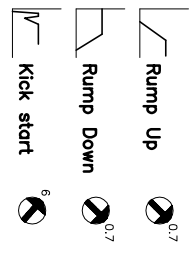
4Z-33-421-218 10J
3N ~ 400V 50Hz + PE

0 5 10 15 20 25 30 35 40 45 50 55 60 65 70 75 80 85 90 95

(SFS) SOFT STARTED



AJUSTE



Elemento Opcional
 Optional Element
 Element optionnel
 Optionales bauteil

A realitzar per el instalador
 To wire by the installer
 A câbler par l'installateur
 Verdrahtung durch den installateur

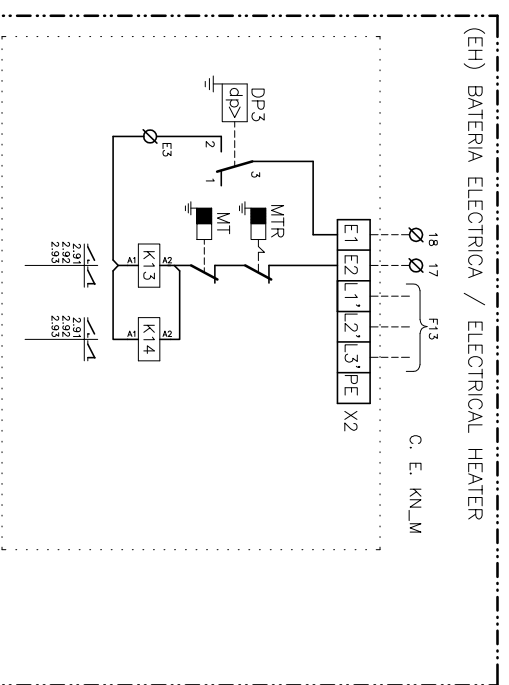
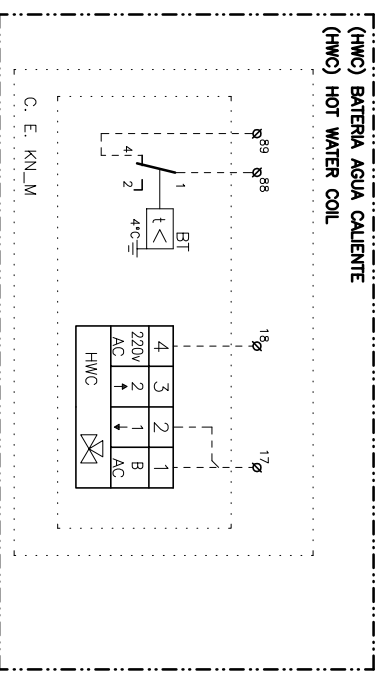
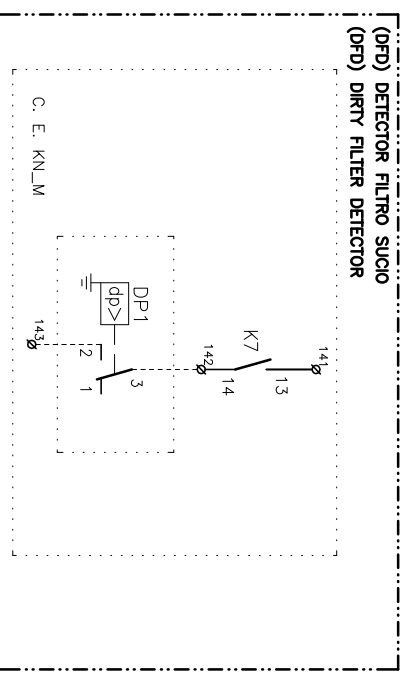
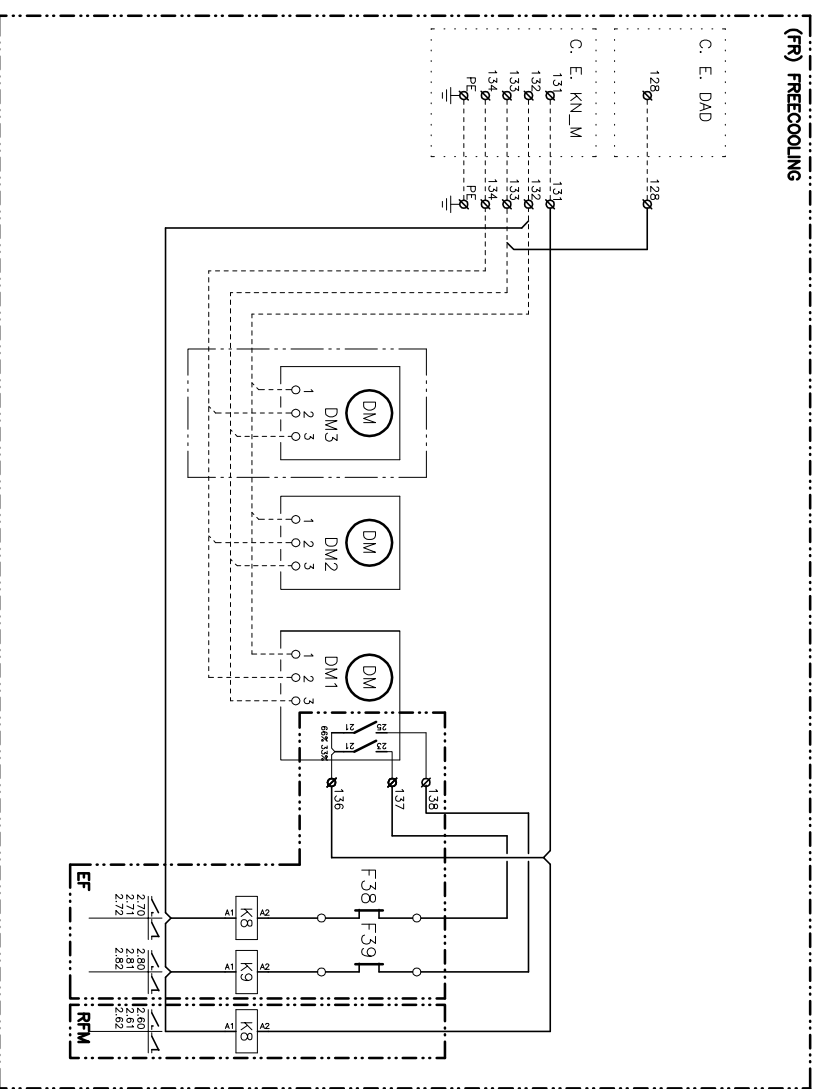
5/8
 Lemnox Refrac S.A.

ESQUEMA ELECTRICO
 ELECTRIC DIAGRAM

**ANCM 152D
 (LECM+KNCM) + KIT -15°C**

4Z-33-421-218 10J
 3N ~ 400V 50Hz + PE

0 5 10 15 20 25 30 35 40 45 50 55 60 65 70 75 80 85 90 95



Elemento Opcional
Optional Element
Element optionnel
Optionales bauteil

A realitzar per el instalador
To wire by the installer
A câbler par l'installateur
Verdrahtung durch den installateur

6/8

Lennox Refrac S.A.

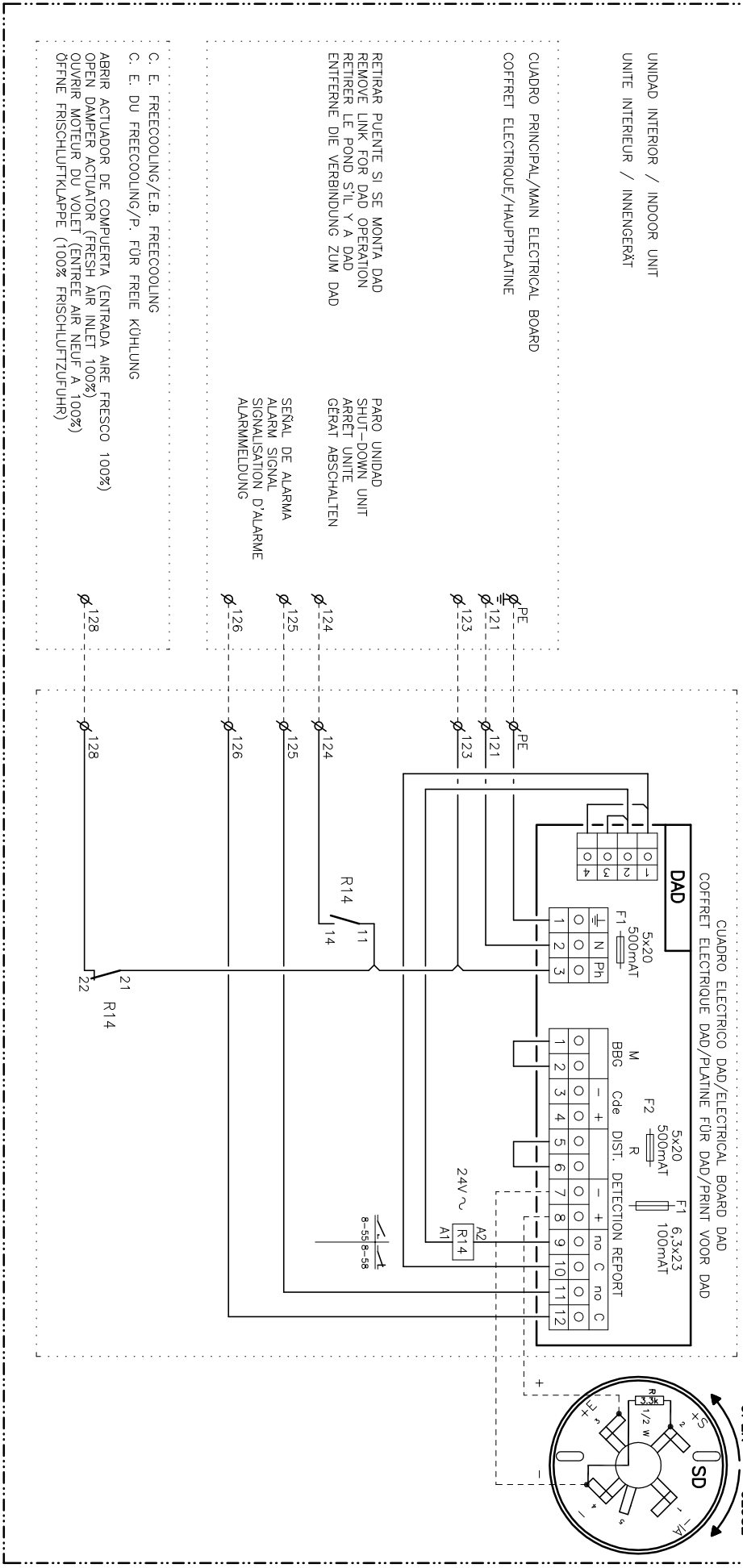
ESQUEMA ELECTRICO
ELECTRIC DIAGRAM

ANCM 152D
(LECM+KNCM) + KIT -15°C

4Z-33-421-218 10J
3N ~ 400V 50Hz + PE

0 5 10 15 20 25 30 35 40 45 50 55 60 65 70 75 80 85 90 95

(DAD) CONTROL DETECCIÓN DE HUMOS
(DAD) SMOKE DETECTION CONTROL



Elemento Opcional
 Optional Element
 Élément optionnel
 Optionales bauteil

A realizar por el instalador
 To wire by the installer
 A câbler par l'installateur
 Verdrahtung durch den installateur

7/8	Lemnox Refrac S.A.	ESQUEMA ELECTRICO ELECTRIC DIAGRAM	ANCM 152D (LECM+KNCM) + KIT -15°C	4Z-33-421-218 10J 3N ~ 400V 50Hz + PE
------------	--------------------	---------------------------------------	--	--

	0	5	10	15	20	25	30	35	40	45	50	55	60	65	70	75	80	85	90	95
AS/RS BM40	Sonda temperatura ambiente remoto	LEYENDA	LEGEND	REFERENCE	LEGENDE															
Cd	Modulo logico	Ambient remote sensor	Module de Control	Module de Control	Umgebungsfertfuehler															
CH	Condensador	Capacitor	Capacitor	Condensateur	Logic Modul															
CM	Resistencia de carter	Crankcase heater	Crankcase heater	Resistance de carter	Kondensator															
DM	Motor ventilador exterior	Compressor fan motor	Compressor fan motor	Motor ventilateur extérieur	Kurbelwammenheizung															
DAD	Motor compresor	Compressor motor	Compressor motor	Compresseur	Kondensatorfuehlermotor															
DPM	Control deteccion de humos	Smoke detection control	Smoke detection control	Détecteur fumées	Kompressor															
DPT	Servomotor compuerta	Damper actuator	Damper actuator	Servomoteur registre	Ausleseinheitraumheider															
DI40	Detector filtros sucios	Dirty filter detector	Dirty filter detector	Détecteur filtres encrassés	Klappenontrieb															
EH	Modulo TTL-485	TTL-485 Module	TTL-485 Module	Module de TTL-485	Differenzdruckwächter															
EH	Ventilador de extraccio	Exhaust fan	Exhaust fan	Ventilateur d'extroction	TTL-485 Modul															
F1-7	Bateria eléctrica	Electrical heater	Electrical heater	Résistance électrique	Abtufflüter															
F20	Magneto térmico	Circuitbreaker	Circuitbreaker	Disjoncteur	Heizstufe															
F21-22-23	Fusible del TF1-SC	FF-1-SC fuse	FF-1-SC fuse	Fusible TF1-SC	Motor/SchutzSchalter															
F31-34	Módulo protección compresor	Compressor protector module	Compressor protector module	Module protection du compresseur	Motor/SchutzSchalter															
F35-36-38-39	Protección térmica	Thermal protection	Thermal protection	Protection thermique	TF1-SC Schutz															
FC	Freecooling	Freecooling	Freecooling	Freecooling	Therm. Relais															
FM	Motor ventilador interior	Indoor fan motor	Indoor fan motor	Motor ventilateur intérieur	Freie-Kühlung															
FSC	Control de condensación	Fan speed control	Fan speed control	Variateur de vitesse du ventilateur	Innenventilatormotor															
HP1-2	Presostato de alta	High pressure pressostat	High pressure pressostat	Pressostat HP	Kondensationsdruckregelung															
HPRL-1-2	Presostato CPC	CPC pressure switch	CPC pressure switch	Pressostat du control de pression condensation	Hochdruckpressostat															
HWC	Bateria agua caliente	Hot Water Coil	Hot Water Coil	la bobine de l'eau chaude	Kondensationsdruckregelungpressostat															
lq(LRA)	Intensidad de arranque	Starting current	Starting current	Intensité de démarrage	---															
lm(MCC)	Intensidad máxima	Maximum current	Maximum current	Intensité maximal	Anlaufstrom															
IS1-2	Sonda temperatura batería interior	Indoor coil temperature sensor	Indoor coil temperature sensor	Sonde temp. batterie interieures	Maximale stromstärke															
K	Contacto	Contact	Contact	Contacteur	Temperaturfühler Verdampfer 1															
LD	Kit larga distancia tubería	Kit piping long distance	Kit piping long distance	Kit longues distances tuyauterie	Schutz															
LP1-2	Presostato baja	Low pressure pressostat	Low pressure pressostat	Pressostat BP	Niederdruckpressostat															
MT	Termostato seguridad (70°C automático)	Safety thermostat (open 70° autom. reser)	Safety thermostat (open 70° autom. reser)	T. securité (70°C automatique)	Sicherheitssther. (70° automatisch)															
MTR	Termostato seguridad (105°C manual)	Safety thermostat (open 105° manu. reser)	Safety thermostat (open 105° manu. reser)	T. securité (105°C manuel)	Sicherheitssther. (105° manuell)															
OS	Sonda temperatura exterior	Outdoor temperature sensor	Outdoor temperature sensor	Sensur extérieure du température	Außertemperaturfühler															
PT1-2	Transductor de presión refrigerante	Refrigerant pressure transducer	Refrigerant pressure transducer	Transducteur de pression	Drucktransmitter															
O	Interruptor general	Main switch	Main switch	Interrupteur général	HauptISchalter															
Q1	Interruptor diferencial	Ground safety switch	Ground safety switch	Interrupteur différentiel	Schalter															
Q2	Interruptor magneto térmico	Circuit breaker	Circuit breaker	Interrupteur magneto thermique	Motor/SchutzSchalter															
R1-20	Relé auxiliar	Auxiliary relay	Auxiliary relay	Relais auxiliaire	Hilfsrelais															
RC	Control Remoto	Remote Control	Remote Control	Contrôleur de Débit	Stromungswächter/SchwimmSchalter															
RFM	Ventilador de retorno	Return Fan Motor	Return Fan Motor	Ventilateur de reprise	Rückluftfuehlermotor															
SC	Relé control de secuencia-fallo de fases	Phase sequence and failure control relay	Phase sequence and failure control relay	Détecteur de phases	Phasenfolgerüberwachung+Störmel															
SD	Sensor detector de humos	Smoke detection sensor	Smoke detection sensor	Tête de détection de fumées	Rauchmelder															
SFS	Arrancador suave	Soft starter	Soft starter	Démoureur progressif	Softstarter/Sanftanlauf															
SV	Válvula solenoide	Solenoid valve	Solenoid valve	Vanne solénoïde	Magneventil															
TF1-2	Transformador	Transformer	Transformer	Transformateur	Transformator															
TS1-2	Sonda temperatura condensacion	Condensing temperature sensor	Condensing temperature sensor	Sonde temp. condensation	Temperaturfühler Kondensator 1															
bk	CODIGO DE COLORES	COLOUR CODE	CODE COLEUR	FARBKENNUNG																
br	negro	black	black	schwarz																
brn	maorrón	brown	brown	brun																
rd	rojo	red	red	rouge																
or	naranja	orange	orange	orange																
yl	amarillo	yellow	yellow	jaune																
gn	verde	green	green	vert																
bl	azul	blue	blue	bleu																
vi	violeta	violet	violet	violet																
gr	gris	gray	gray	gris																
wh	blanco	white	white	blanc																