



**CARATTERISTICHE ELETTRICHE  
ELECTRIC CHARACTERISTIC**

SERIE	DHAU/DR060...190.....pC01
MODEL	060-190 400V+N
ELECTRIC CHARACTERISTIC	

Revisione	Foglio	Oggetto	Data	Responsabile
A	1	PGD3+DAMPER	27/03/2007	FF
B	1	+HOT GAS +HOT WATER VALVE	28/03/2007	FF
C	1	REVISIONE GENERALE	16/04/2007	C.N.
D	1	AGGIUNTA SERRANDA ESTERNA	19/06/2007	C.N.

ELECTRIC CHARACTERISTIC

WITH EC PLUG FAN

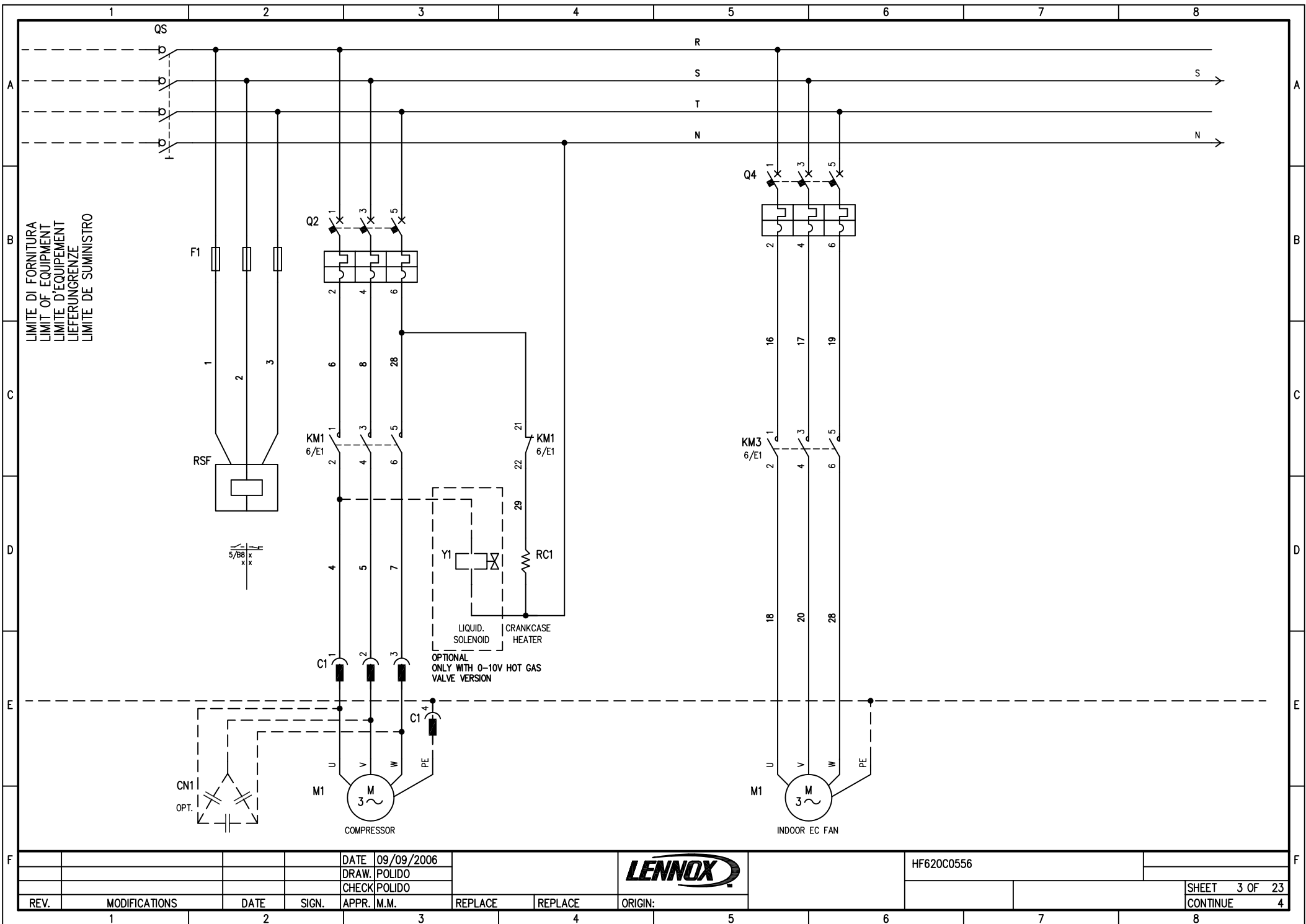
VERS.

"F" = SOLO FREDDO-ONLY COOLING

B	+HOT GAS +HOT WATER VALVE	28/03/2007	FF	DATE	09/09/2006		HF620C0556	SHEET 1 OF 23	
C	REVISIONE GENERALE	16/04/2007	C.N.	DRAW.	POLIDO				CONTINUE 2
D	AGGIUNTA SERRANDA ESTERNA	19/06/2007	C.N.	CHECK	POLIDO				
REV.	MODIFICATIONS	DATE	SIGN.	APPR.	M.M.	REPLACE	REPLACE	ORIGIN:	

1	2		3		4		5		6		7		8		
A	SIGN.	Descriptions	Note		SIGN.	Descriptions	Note		SIGN.	Descriptions	Note				
	AP1	PRESSOSTATO DI ALTA HIGH PRESSURE P-STAT PRESSOSTAT HAUTE PRESSION DRUCKSCHALTER, HOCHDRUCK PRESOSTATO DE ALTA			RSF	RELE' SEQUENZA FASE PHASE SEQUENCE CONTROL RELAY RELAIS DE CONTROLE DE PHASE D'ETAGE STEURRELAIS FUER PHASENFOLGE RELE' CONTROL SECUENCIA FASES			Q1	INTERR. RSF SWITCH RSF INTERR. RSF AUTOMATISCHER RSF INTERR. RSF					
	KA3	RELE' ALTA HI-PRESSURE RELAIS RELAIS HAUTE PRESSION RELAIS HOCHDRUCK RELE DE ALTA			SR1	SERRANDA DAMPER REGISTRE MOTORISIERTA COMPUERTA			Q2	INTERR. COMPRESSORI SWITCH COMPRESSORS INTERR. COMP. AUTOMATISCHER KOMP. INTERR. COMP.					
	KM1	CONTATTORI COMPRESSORE COMPRESSOR CONTACTORS CONTACTEUR COMPRESSEUR SCHUTZ VENDICHTER CONTACTOR DEL VENTILADOR			FS1	PRESSOSTATO FLUSSO ARIA AIR FLOW PRESSURE SWITCH PRESSOST. D'ENCRASSEMENT DE FILTRE DRUCKSCHALTER NIEDERDRUCK PRESOSTATO DE BAJA									
									Q5	INTERR. VENTILATORI SWITCH FANS INTERR. VENT. AUTOMATISCHER VENT. INTERR. VENT.					
	KM4	CONTATORE MOTOVENTILATORE FAN MOTOR CONECTOR CONTACTEUR VENTILATEUR VENTILATOR SCHUETZ CONTACTOR DEL MOTOVENTILADOR			P1	PRESSIONE CONDENSAZIONE CONDENSING PRESSION SENSOR SONDE DU PRESSION DE CONDENSATION KONDENSATIONSDRUCK-FUEHLER SONDA PRESSION CONDENSACION									
					SA	TEMPERATURA AMBIENTE INTERNO SHELTER INTERNAL AIR TEMPERATURE SENSOR SONDE TEMPERATURE D'AIR EINTERIOR AUSSERER LUFTEMP.-FILTER SONDA DE TEMPERATURA DE LA DESCARGA DE AIRE				Q7	INTERR. VENTILATORI COND. SWITCH COND. FANS INTERR. COND. VENT. AUTOMATISCHER VENT. INTERR. VENT. COND.				
	C1 C2	COMPRESSORE COMPRESSOR COMPRESSEUR KOMPRESSOR COMPRESOR			SM	TEMPERATURA ARIA IN MANDATA DISCHARGE AIR TEMPERATURE SONDE DE TEMPERATURE ZULUFTTEMPERATUR TEMP. DE LA DESCARGA DE AIRE				RC1	RESISTENZE CARTER CRANCKCASE HEATERS RESISTANCE DE CARTER KUBELWANNENHEIZUNG RESISTENCIAS DE CARTER				
	TR	TRASFORMATORE TRANSFORMER TRANSFORMATEUR TRANSFORMATOR TRANSFORMADOR			SE	TEMPERATURA ARIA ESTERNA OUTDOOR AIR SENSOR SONDE D'AIR EXTERNE AUSSENLUFTUEHLER SONDA DE AIRE EXTERNA				Y1 Y2	SOLENOIDI LIQUIDO LIQUID SOLENOID VALVE ELECTROVANNE LIQ. MAGNETVENTIL-KAELTEMITTEL ELECTROVALVULA REFRIG.				
	QS	INTERRUTTORE GENERALE MAIN SWITCH INTERRUPTEUR GENERAL HAUPTSCHALTER INTERRUPTOR GENERAL			BP1	PRESSOSTATO DI BASSA LOW PRESSURE P-STAT PRESSOSTAT BASSE PRESSION DRUCKSCHALTER NIEDERDRUCK PRESOSTATO DE BAJA				TP3 TP4 TP5	TERMICHE VENTILATORI THERMAL PROTECTIONS FANS TERMICHE VENTILATORI TERMICHE VENTILATORI TERMICHE VENTILATORI				
M1 M2 M3	MOTOVENTILATORE EVAPORANTE EVAP. FAN MOTOR MOTEUR VENTILATEUR DE EVAP. EVAP.-LUEFTER MOTOVENTILADOR EVAPORADORA			K1	REGOLATORE DI VELOCITA' SPEED CONTROLLER REGULATEUR DE VITESSE VENTILATOR/DREHZAHLEGLER REGULADOR VELOCIDAD										
CN1	COND. DI RIFASAMENTO POWER FACT. CORRECTION COND. CORRECT. COS. PHI KOND. KORR. COS. PHI COND. DE COMP. DE FASES			FS2	PRESSOSTATO FILTRI SPORCHI CLOGGED FILTER PRESSURE SWITCH PRESSOSTAT D'ENCRASSEMENT DE FILTRE DRUCKSCHALTER. FILTERVERSCHMUTZUNG PRESSOSTATO FILTROS SUCIOS										
F				DATE: 09/09/2006						HF620C0556					
				DRAW: POLIDO											
				CHECK: POLIDO											
REV.	MODIFICATIONS	DATE	SIGN.	APPR.	M.M.	REPLACE	REPLACE	ORIGIN:					SHEET 2 OF 23		
1		2				3		4		5			6	7	8
														CONTINUE	3





DATE 09/09/2006  
 DRAW. POLIDO  
 CHECK POLIDO



HF620C0556

SHEET 3 OF 23  
 CONTINUE 4

REV. MODIFICATIONS DATE SIGN. APPR. M.M. REPLACE REPLACE ORIGIN:

1

2

3

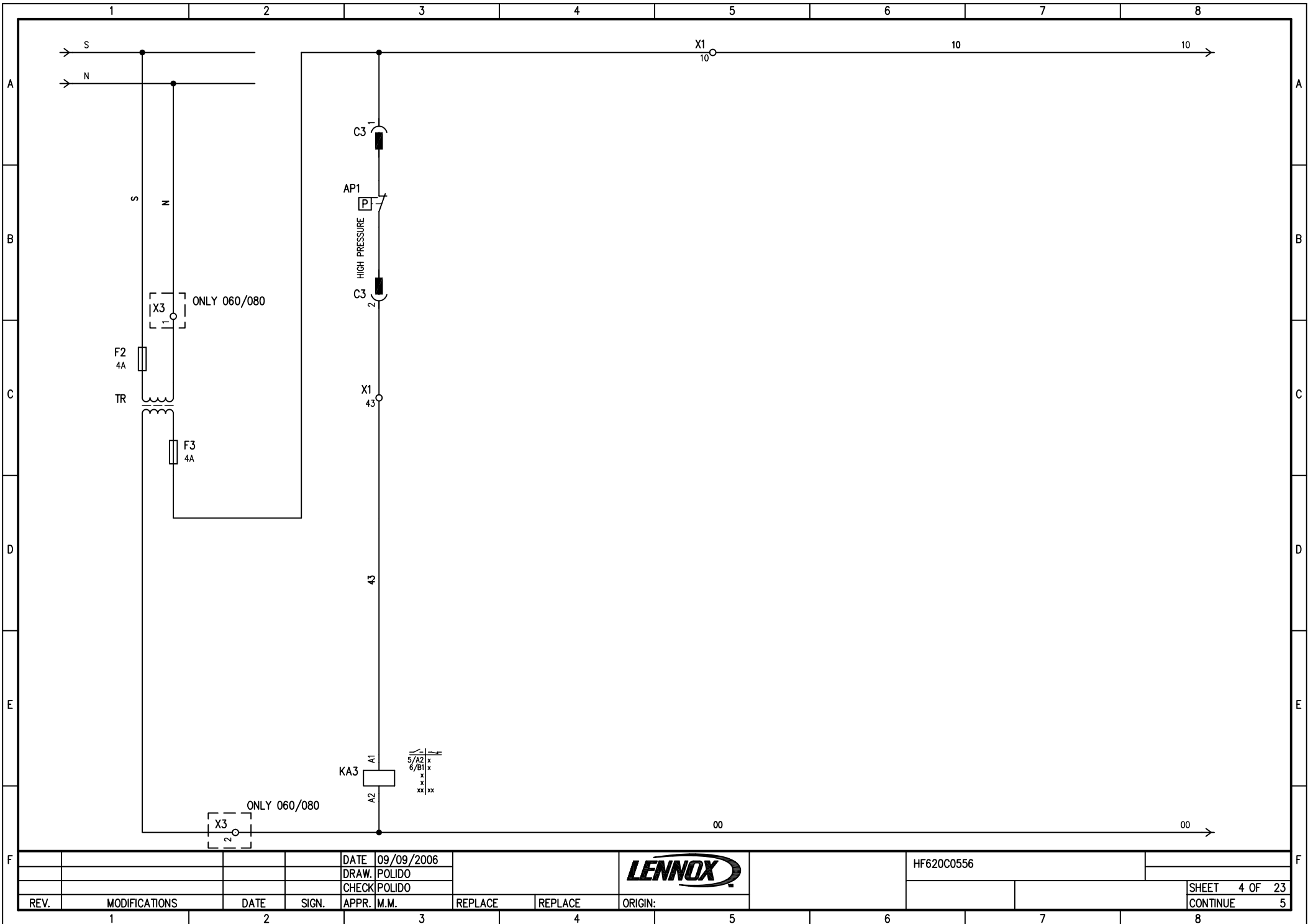
4

5

6

7

8

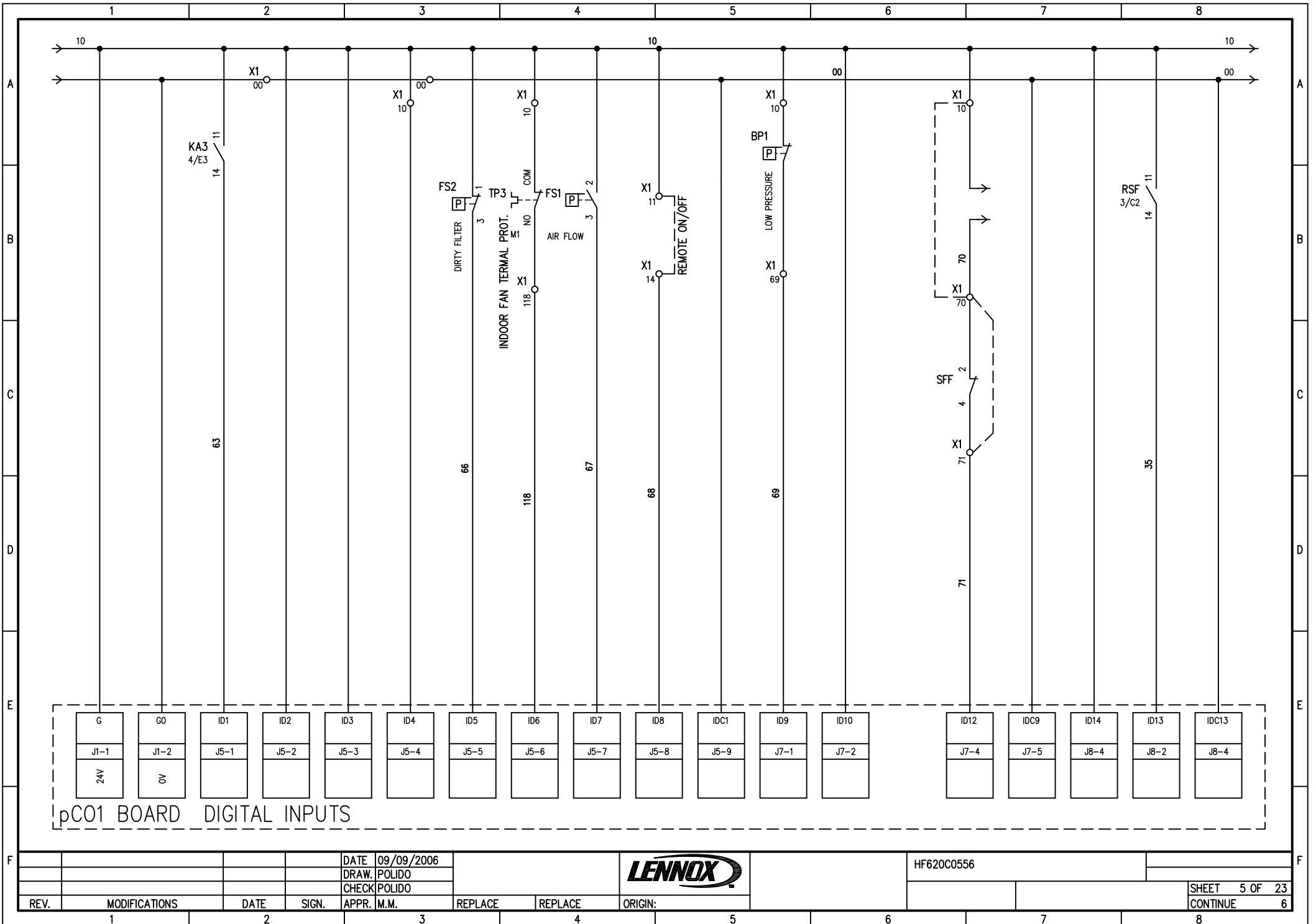


DATE 09/09/2006  
 DRAW. POLIDO  
 CHECK POLIDO



HF620C0556

REV.	MODIFICATIONS	DATE	SIGN.	APPR.	M.M.	REPLACE	REPLACE	ORIGIN:	SHEET 4 OF 23	CONTINUE 5	
1		2			3		4	5	6	7	8



pC01 BOARD DIGITAL INPUTS

G	G0	ID1	ID2	ID3	ID4	ID5	ID6	ID7	ID8	IDC1	ID9	ID10	ID12	IDC9	ID14	ID13	IDC13
J1-1	J1-2	J5-1	J5-2	J5-3	J5-4	J5-5	J5-6	J5-7	J5-8	J5-9	J7-1	J7-2	J7-4	J7-5	J8-4	J8-2	J8-4
24V	0V																

DATE 09/09/2006  
 DRAW. POLIDO  
 CHECK POLIDO  
 APPR. M.M.

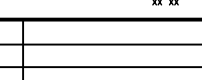
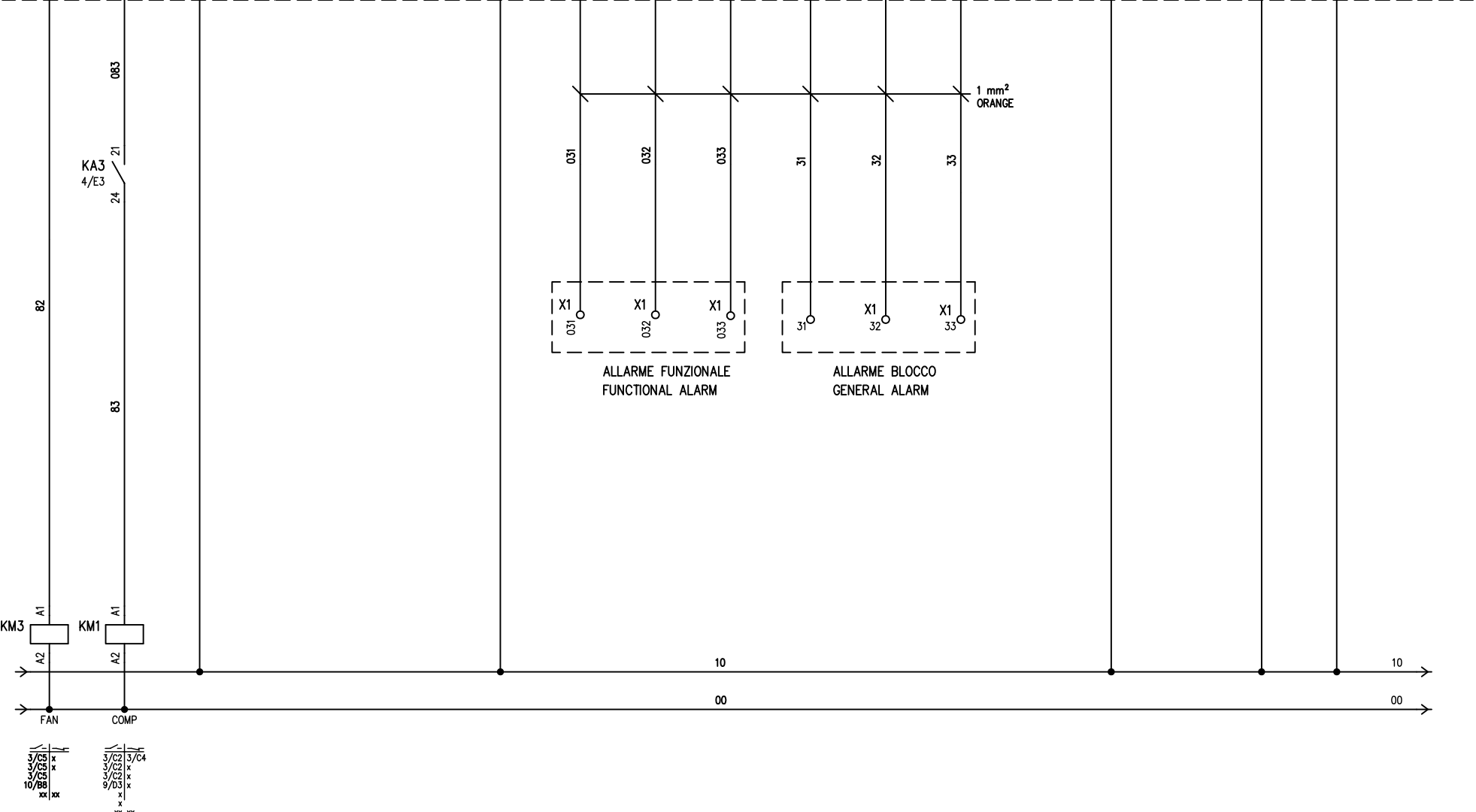
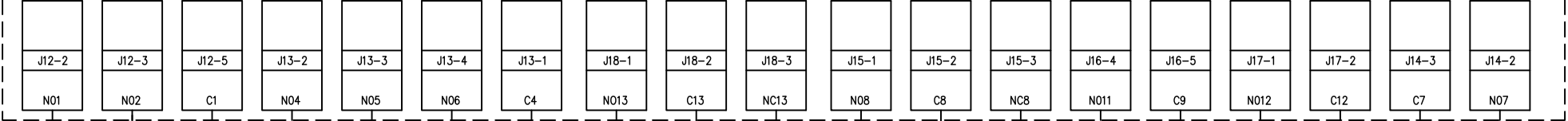


HF620C0556

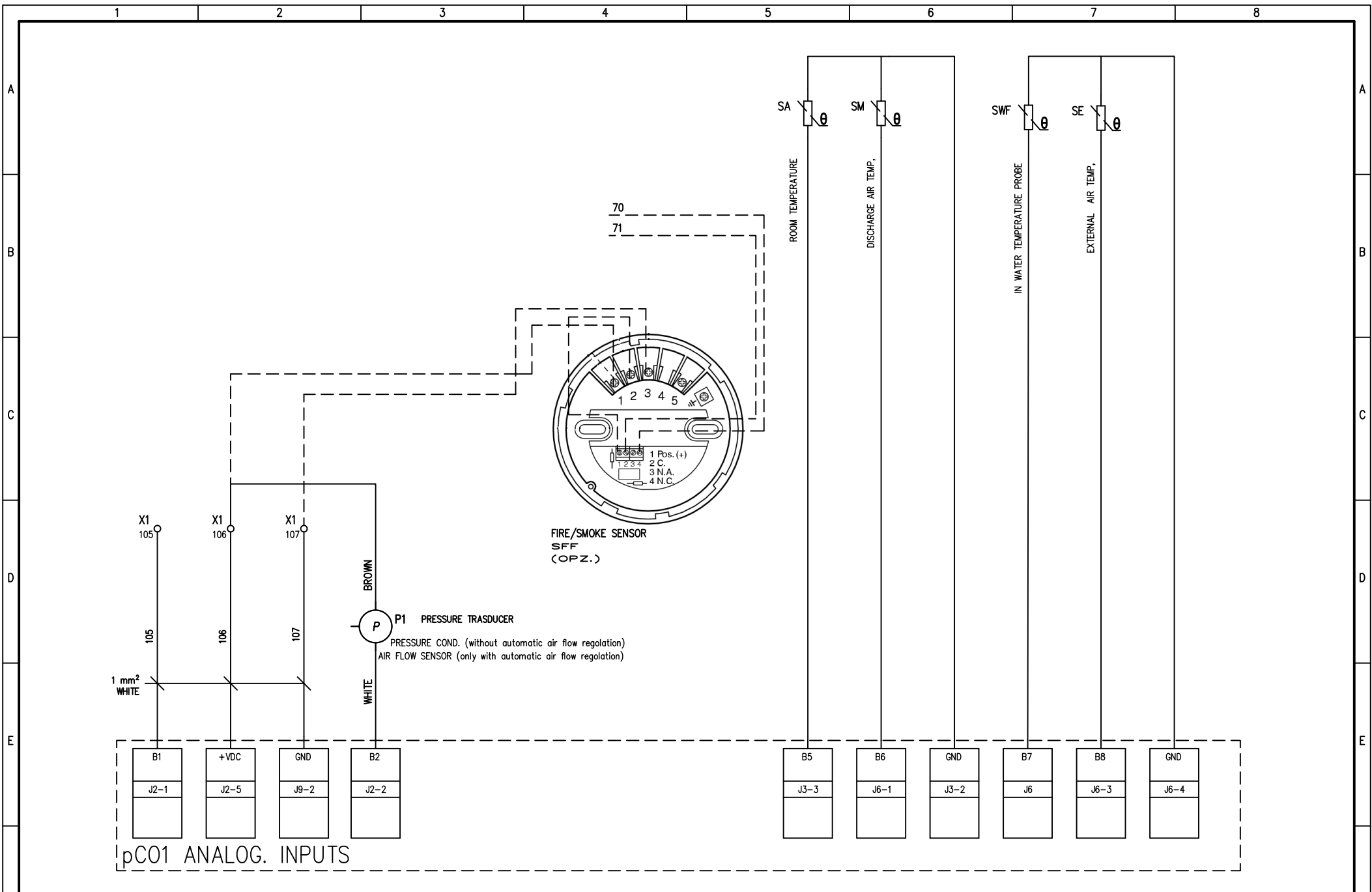
SHEET 5 OF 23  
 CONTINUE 6

REV.	MODIFICATIONS	DATE	SIGN.	APPR.	M.M.	REPLACE	REPLACE	ORIGIN:						
1		2			3			4		5		6	7	8

pC01 DIGITAL OUTPUTS



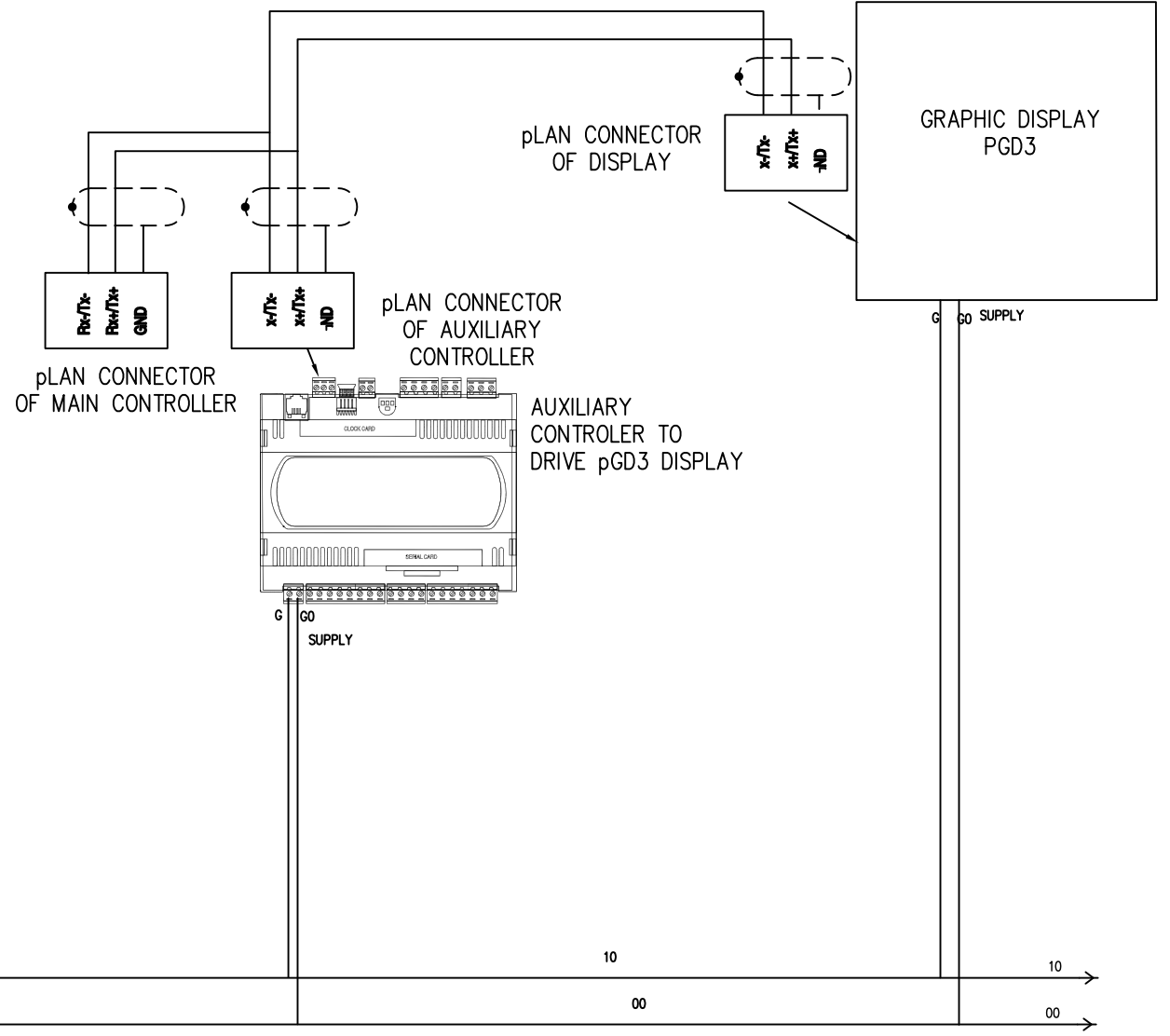
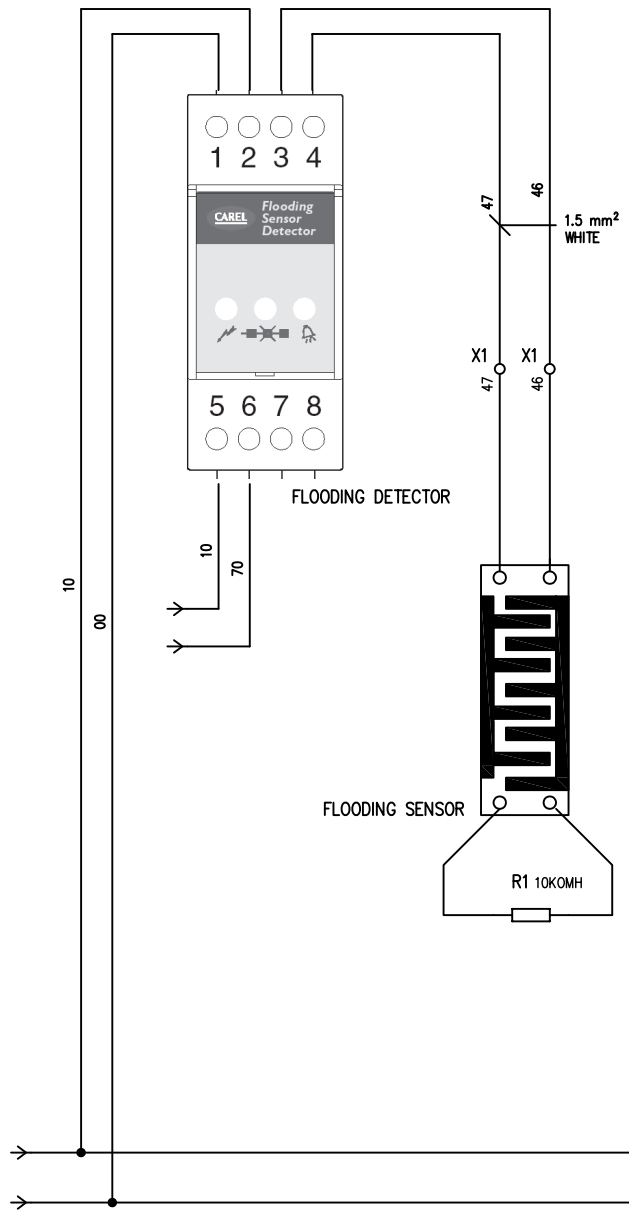
		DATE: 09/09/2006				HF620C0556					
		DRAW: POLIDO									
		CHECK: POLIDO								SHEET 6 OF 23	
REV.	MODIFICATIONS	DATE	SIGN.	APPR.	M.M.	REPLACE	REPLACE	ORIGIN:	CONTINUE		
1		2		3		4		5	7		
									7		



				DATE	09/09/2006			<b>LENNOX</b>	HF620C0556			
				DRAW.	POLIDO							
				CHECK	POLIDO							
REV.	MODIFICATIONS	DATE	SIGN.	APPR.	M.M.	REPLACE	REPLACE	ORIGIN:			SHEET 7 OF 23	
1		2			3		4	5	6	7	8	CONTINUE 8

FLOODING DETECTOR OPTION

pGD3 GRAPHIC DISPLAY OPTION

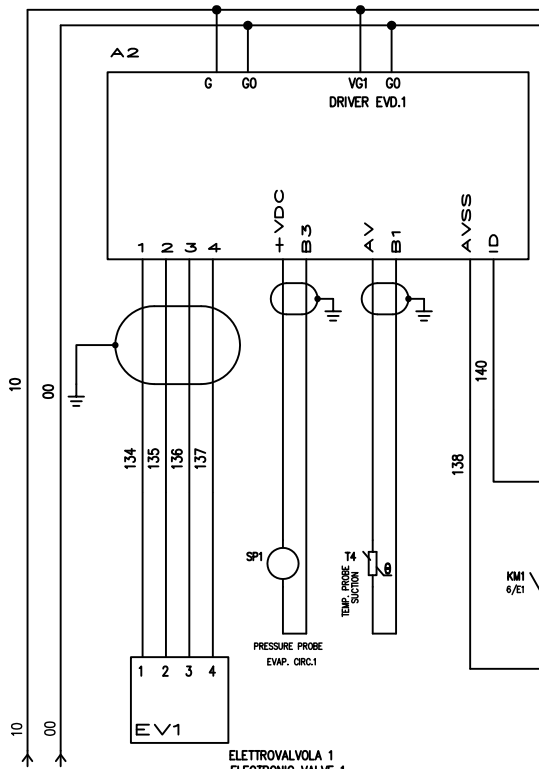


				DATE	09/09/2006			<b>LENNOX</b>	HF620C0556			
				DRAW.	POLIDO							
				CHECK	POLIDO							
REV.	MODIFICATIONS	DATE	SIGN.	APPR.	M.M.	REPLACE	REPLACE	ORIGIN:			SHEET 8 OF 23	
1		2		3		4		5	6	7	8	9
											CONTINUE	

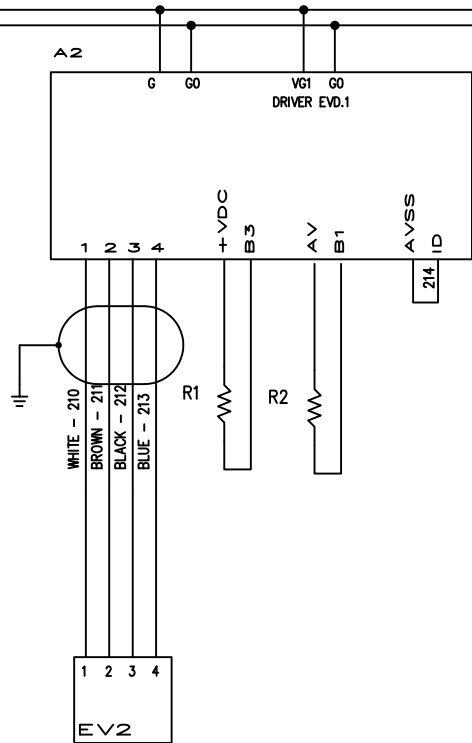


ELECTRONIC EXPANSION VALVE OPTION

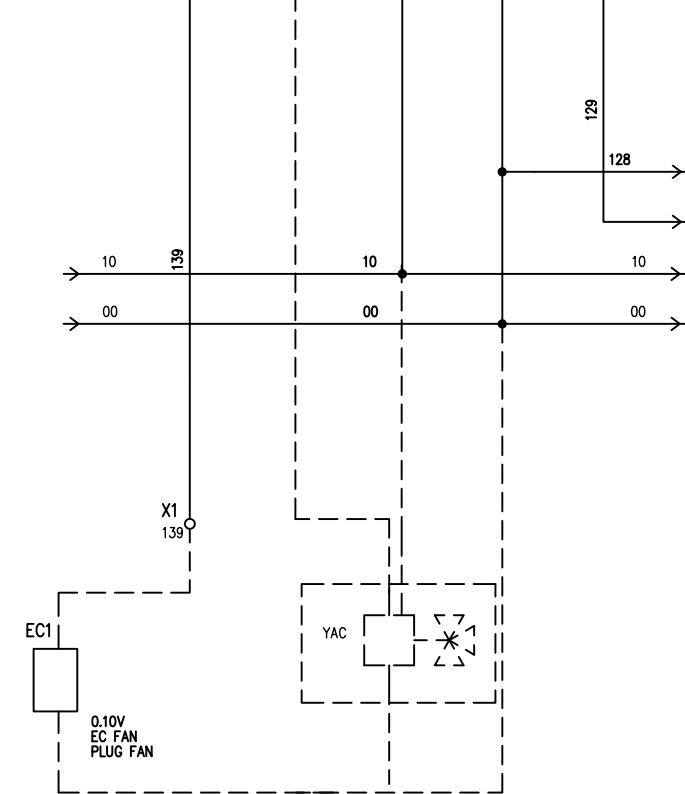
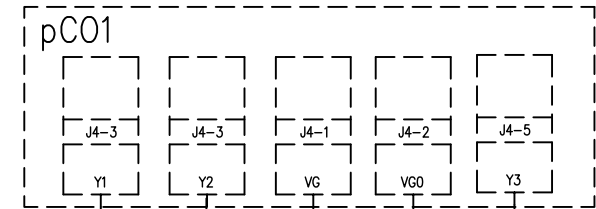
ELECTRONIC HOT-GAS BYPASS VALVE OPTION



ELETTROVALVOLA 1  
ELECTRONIC VALVE 1  
ELECTRO-VANNE 1  
MAGNETVENTIL 1



ELETTROVALVOLA 2  
ELECTRONIC VALVE 2  
ELECTRO-VANNE 2  
MAGNETVENTIL 2



CONTROLLO VENTILATORI  
FANS MOTOR CONTROL  
CONTROL VENTILATEUR

VALVOLA ACQUA CALDA (OPZ.)  
HOT WATER VALVE (OPT.)  
VANNE DE REGUL. EAU CHAUDE (OPT.)  
WEGEWARMWASSERVENTIL (ZUB.)  
VALVILA AGUA CALIENTE (OPC.)

REV.	MODIFICATIONS	DATE	SIGN.	APPR.	M.M.	REPLACE	REPLACE	ORIGIN:
1		2						

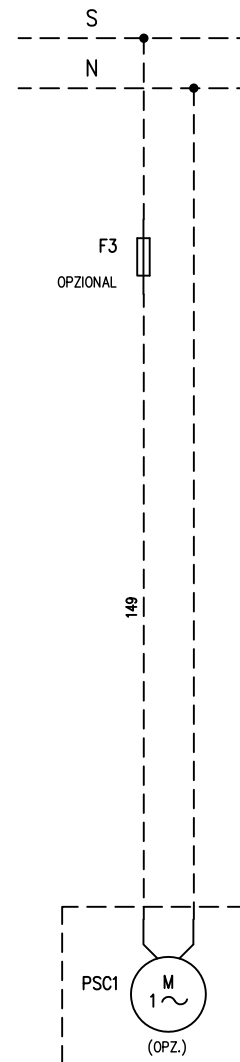
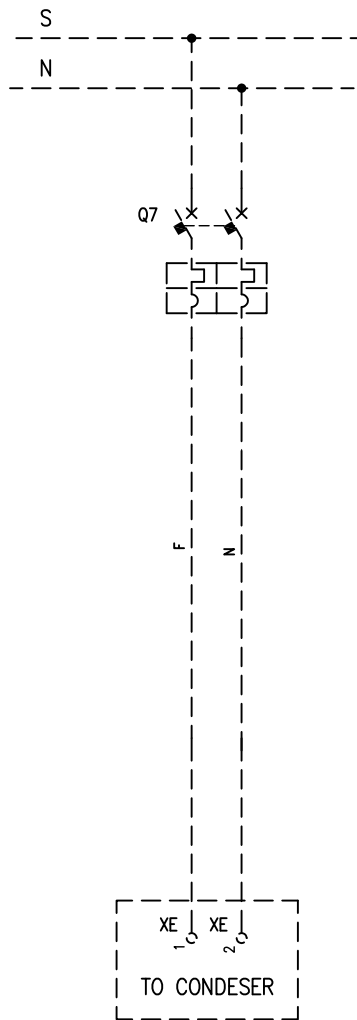
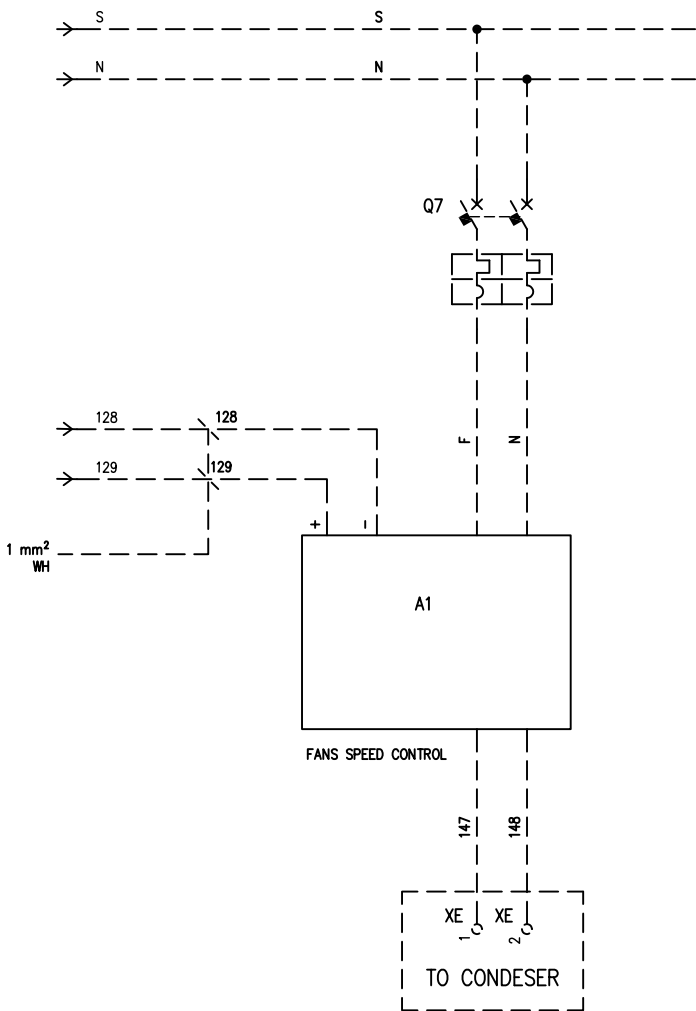
DATE	09/09/2006
DRAW.	POLIDO
CHECK	POLIDO



HF620C0556

C/CONDENSATION OPZ.

MCB OPZ.



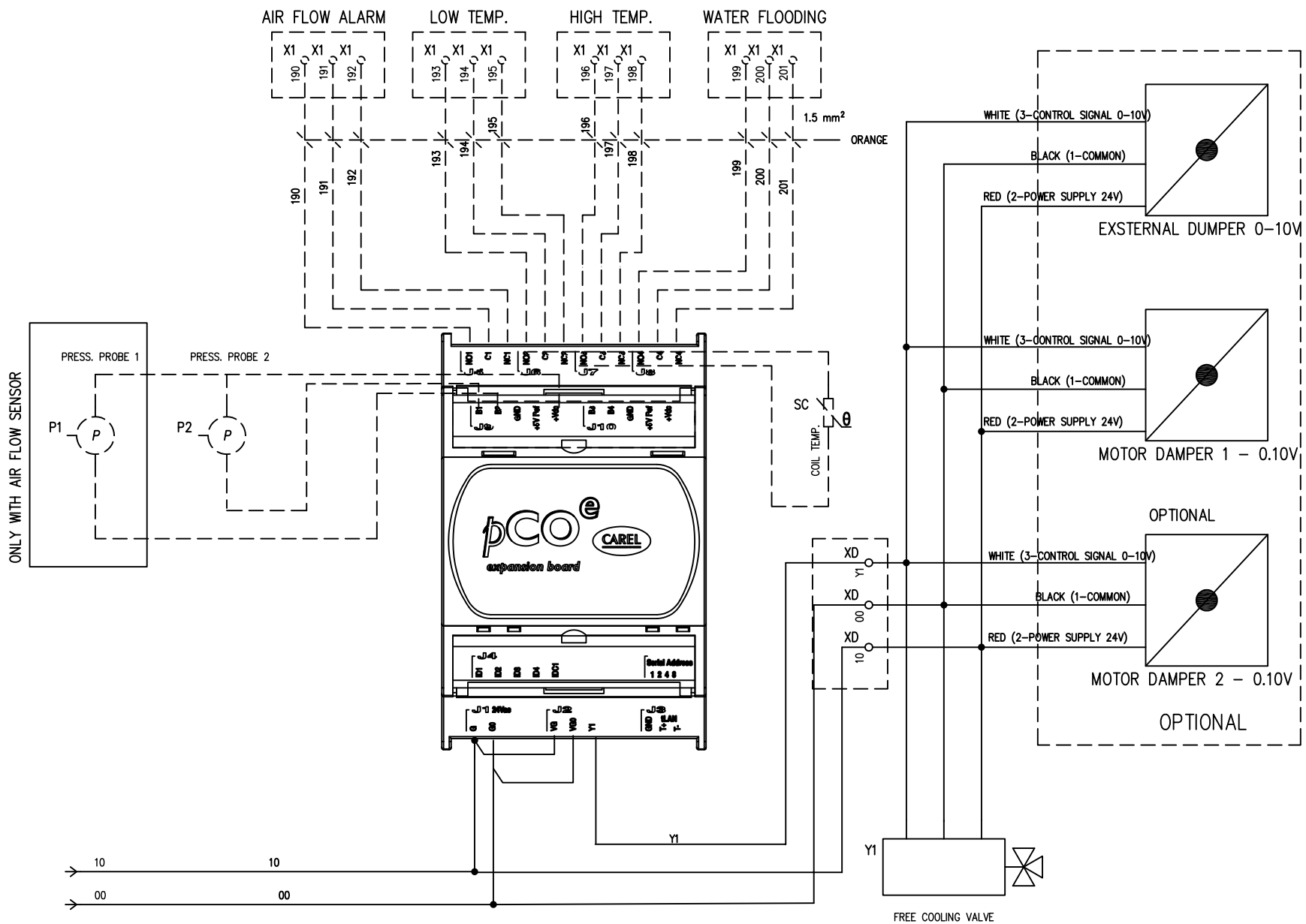
SEGNALAZIONE DELLO STATO DELL'UNITA' (OPZ.)  
 UNIT STATUS SIGNAL (OPT.)  
 ETAT DES SIGNAUX DE L'UNITE' (OPT.)  
 STATUSMELDEKONTAKT (ZUB.)  
 SENALIZACION DEL ESTADO DE LA UNIDAD (OPC.)

DATE	09/09/2006							
DRAW.	POLIDO							
CHECK	POLIDO							
REV.	MODIFICATIONS	DATE	SIGN.	APPR.	M.M.	REPLACE	REPLACE	ORIGIN:
1		2						

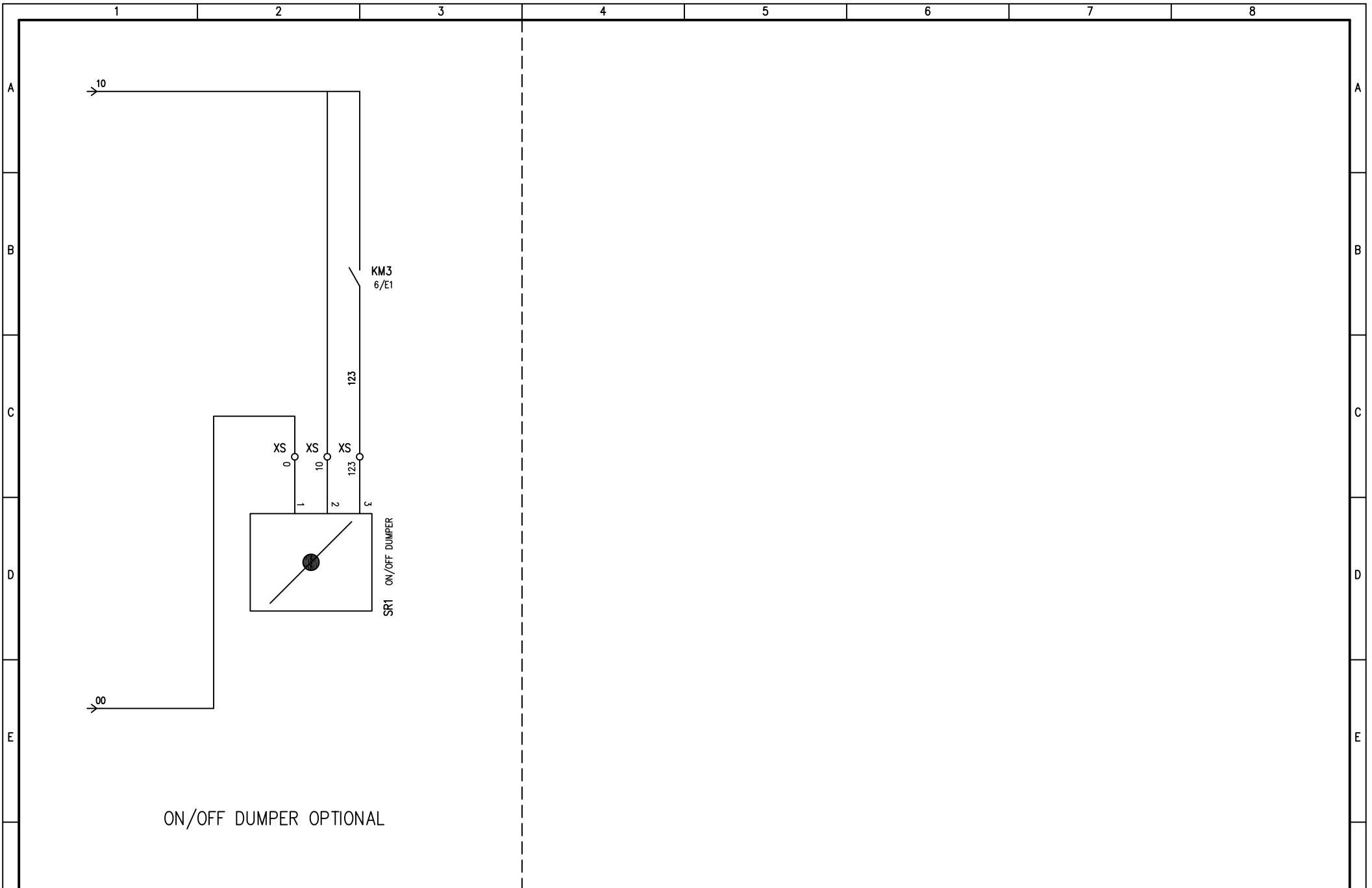


HF620C0556

pCOE BOARD



				DATE 09/09/2006				<b>LENNOX</b>		HF620C0556					
				DRAW. POLIDO											
				CHECK POLIDO											
REV.	MODIFICATIONS	DATE	SIGN.	APPR.	M.M.	REPLACE	REPLACE	ORIGIN:					SHEET 11 OF 23		
1		2											CONTINUE 12		



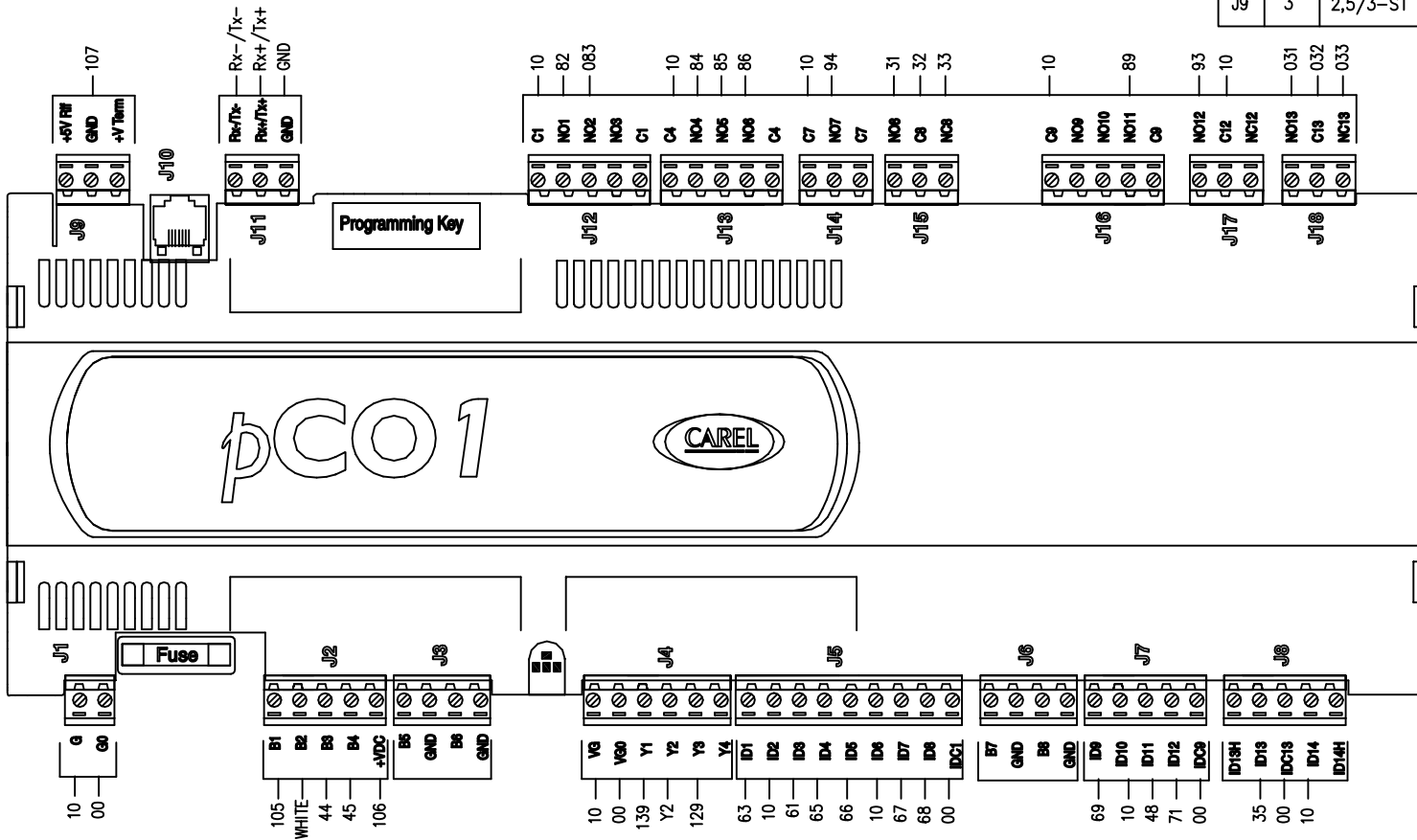
ON/OFF DUMPER OPTIONAL

DATE	09/09/2006			<b>LENNOX</b>	HF620C0556			
DRAW.								
CHECK								
REV.	MODIFICATIONS	DATE	SIGN.	APPR.	REPLACE	REPLACE	ORIGIN:	SHEET 11-1 OF CONTINUE
1		2		3				8

# LAYOUT SCHEDA ELECTRONIC BOARD LAYOUT

CONNETTORI PHOENIX A SPINA COMBICON CON PASSO 5.08 mm. COLORE VERDE TIPO MSTB 2,5 :

SIG.	POLI	TIPO	CODICE	SIG.	POLI	TIPO	CODICE
J1	2	2,5/2-ST	17 57 01 9	J11	3	2,5/3-ST	17 57 02 2
J2	5	2,5/5-ST	17 57 04 8	J12	5	2,5/5-ST	17 57 04 8
J3	4	2,5/4-ST	17 57 03 5	J13	5	2,5/5-ST	17 57 04 8
J4	6	2,5/6-ST	17 57 05 1	J14	3	2,5/3-ST	17 57 02 2
J5	9	2,5/9-ST	17 57 08 0	J15	3	2,5/3-ST	17 57 02 2
J6	4	2,5/4-ST	17 57 03 5	J16	5	2,5/5-ST	17 57 04 8
J7	5	2,5/5-ST	17 57 04 8	J17	3	2,5/3-ST	17 57 02 2
J8	5	2,5/5-ST	17 57 04 8	J18	3	2,5/3-ST	17 57 02 2
J9	3	2,5/3-ST	17 57 02 2				PCOUMID



REV.	MODIFICATIONS	DATE	SIGN.	APPR.	M.M.	REPLACE	REPLACE	ORIGIN:	HF620C0556	SHEET 12 OF 23
1		2								CONTINUE 13



TERMINAL STRIP  
BÖRNIER  
KLEMMLEISTE  
KLEMMLEISTE

CONNETTORI

C1  
CONNETTORE 4 VIE FEMMINA (FCI)



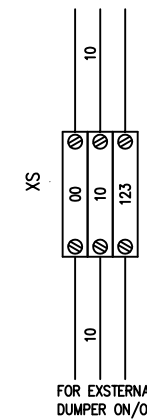
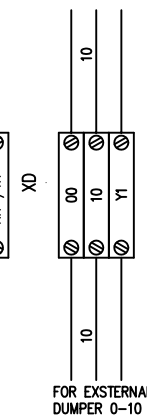
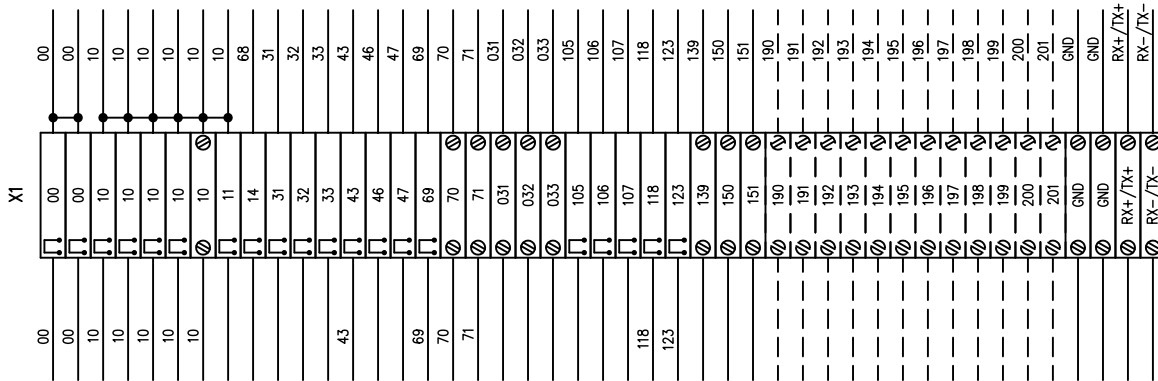
Pin	Filo	Posizione
1	4	3/E2
2	5	3/E2
3	7	3/E2
4		3/E3

C3

CONNETTORE 4 VIE FEMMINA (FCI)



Pin	Filo	Posizione
1	10	4/A3
2	43	4/B3



LOW PRESSURE

REV.	MODIFICATIONS	DATE	SIGN.	APPR.	M.M.	REPLACE	REPLACE	ORIGIN:



HF620C0556



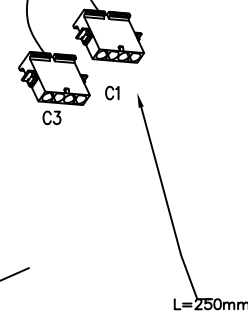
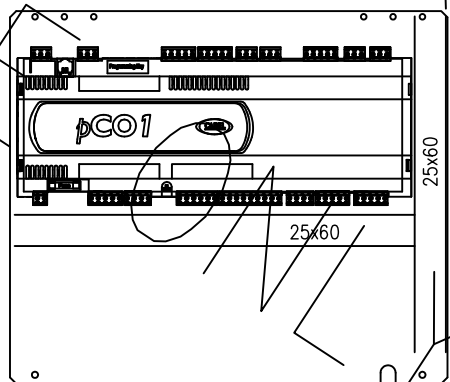
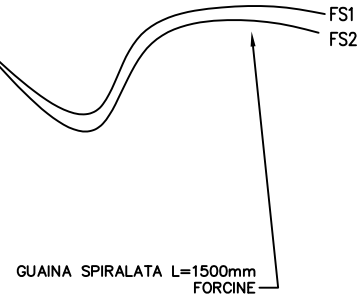
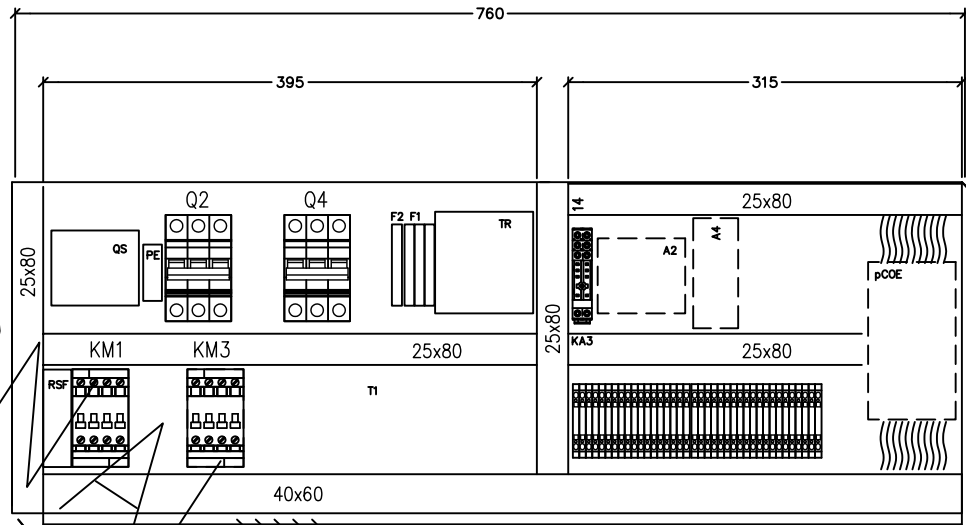
LAYOUT 100-110-130-160-190

PIASTRA DI FONDO NS. COD. HF17000756

F1=USARE MORSETTI PORTAFUBBII PHOENIX  
UK5-HESI  
INTERBLOCATI



LASCARE LATO INFERIORE DEL SEZIONATORE  
LIBERO PER INGRESSO LINEA



CAVO 3X1,5 NPI L=2000mm

CAVO 2X0,5 NPI L=2000mm

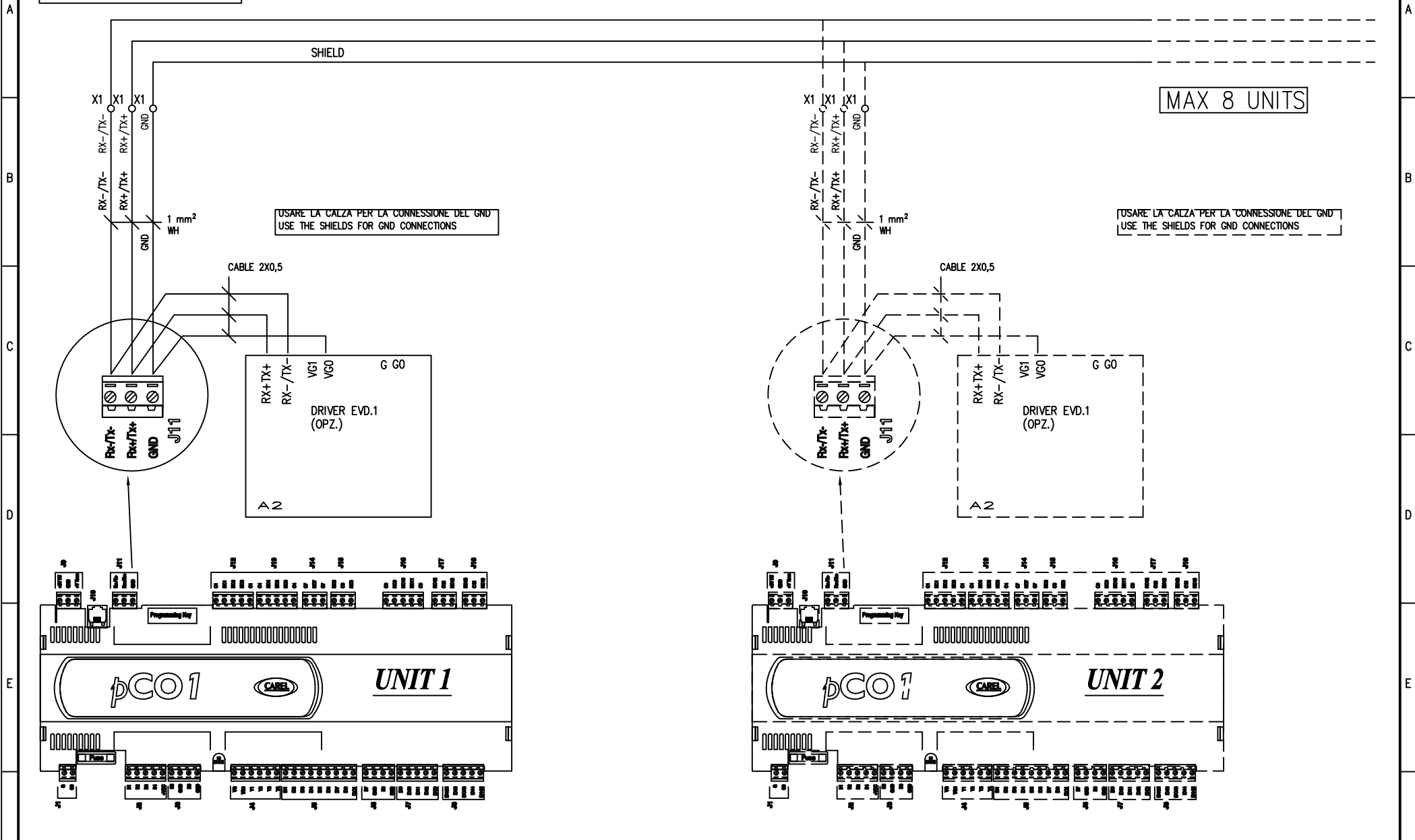
GUAINA SPIRALATA L=150mm

				DATE	09/09/2006			<b>LENNOX</b>	HF620C0556			
				DRAW.	POLIDO							
				CHECK	POLIDO							
REV.	MODIFICATIONS	DATE	SIGN.	APPR.	M.M.	REPLACE	REPLACE	ORIGIN:			SHEET 15 OF 23	
1		2		3		4		5	6	7	8	CONTINUE 16



	1	2	3	4	5	6	7	8	
A									A
B									B
C									C
D									D
E									E
F									F
				DATE	09/09/2006			HF620C0556	
				DRAW.	POLIDO				
				CHECK	POLIDO				
REV.	MODIFICATIONS	DATE	SIGN.	APPR.	M.M.	REPLACE	REPLACE	ORIGIN:	SHEET 16 OF 23 CONTINUE 17
	1	2	3	4	5	6	7	8	

# LAN CONNECTIONS



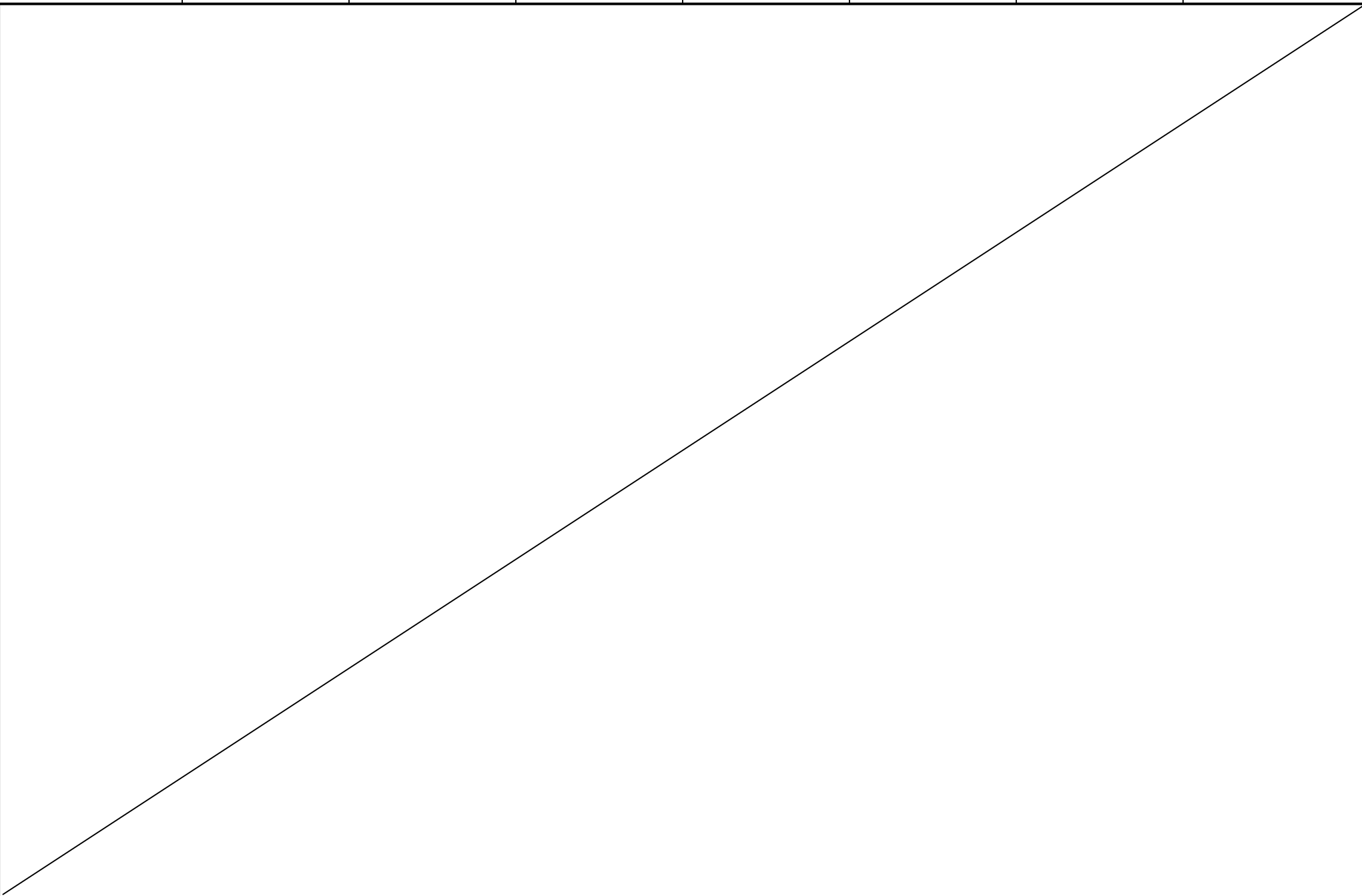

DATE: 09/09/2006  
 DRAW: POLIDO  
 CHECK: POLIDO




HF620C0556

REV. MODIFICATIONS DATE SIGN. APPR. M.M. REPLACE REPLACE ORIGIN:

SHEET 17 OF 23  
 CONTINUE 18

	1	2	3	4	5	6	7	8	
A									A
B									B
C									C
D									D
E									E
F									F
			DATE	09/09/2006			HF620C0556		
			DRAW.	POLIDO					
			CHECK	POLIDO					
REV.	MODIFICATIONS	DATE	SIGN.	APPR.	M.M.	REPLACE	REPLACE	ORIGIN:	
1		2		3		4		5	
								6	
								7	
								8	
								SHEET 18 OF 23	
								CONTINUE 19	

1	2		3		4		5		6		7		8	
060/080	Ref-mark	Function		Technical data		Item code		Description			Amount	M.U.	Position	
	AP	HIGH PRESSURE									1		4/C02	
	BP	LOW PRESSURE									1		5/A06	
	C1	COMPRESSOR									1		3/E02	
	EV1										1		7/B05	
	EV2										1		7/B05	
	F1/2/3			4AF			FUSIBILE 5X20			1	PCE	3/D08		
	KA3	HIGH PRESSURE RELAY		FINDER		40528024					1		4/E02	
	KM1	COMP.		SIEMENS		3RT1016-1AB01 3RH1921-1DA11		TELER. 4KW 400V 3P BOB. 24V AC CONTATTO AUSILIARIO 1NA + 1NC			1	PCE	4/E04	
	KM3	EVAP. FANS		SIEMENS		3RT1016-1AB01		TELER. 4KW 400V 3P BOB. 24V AC			1	PCE	4/E07	
				DATE	09/09/2006				HF620C0556					
				DRAW.	POLIDO									
				CHECK	POLIDO									
REV.	MODIFICATIONS		DATE	SIGN.	APPR.	M.M.	REPLACE	REPLACE	ORIGIN:				SHEET 19 OF 23	CONTINUE 20
1			2			3			4				5	8

1	2		3	4	5	6	7	8	
060-080	Ref-mark	Function	Technical data	Item code	Description	Amount	M.U.	Position	
	M1	EVAP. FANS				1		3/E05	
	Q2	COMPRESSOR	SIEMENS	SY6316-7 3X6A	INT.AUT 3P C 16A 6KA	1	PCE	3/B04	
	Q4	FANS.	SIEMENS	5SY6306-7	INT.AUT 3P C 6A 6KA	1	PCE	3/B06	
	Q7	CONDENSER	SIEMENS	5SY6216-7	INT.AUT 2P C 16A 6KA	1	PCE	3/B07	
	QS		ABB	OT45E4+OHY2AJ+OXS5X85	SEZ. 4P In= 45A+MANIGLIA+ALBERO (TAGLIATO A 75mm)	1		3/A01	
	R1	E. HEATERS				1		3/E04	
	RSF	PHASE SEQUENCE				1		3/C02	
	SA	ROOM TEMP.				1		6/B05	
	TR		100VA		CON FUS. A BORDO	1		3/C07	
				DATE	09/09/2006				
				DRAW.	POLIDO				
				CHECK	POLIDO				
REV.	MODIFICATIONS	DATE	SIGN.	APPR.	M.M.	REPLACE	REPLACE	ORIGIN:	
1		2		3		4		5	
								HF620C0556	
								SHEET 20 OF 23	
								CONTINUE 21	





1	2		3	4	5	6	7	8	
160/190	Ref-mark	Function	Technical data	Item code	Description	Amount	M.U.	Position	
	M1/M2	EVAP. FANS				1		3/E05	
	Q2	COMPRESSORE	SIEMENS	5SY6316-7	INT.AUT 3P C 16A 6KA	1	PCE	3/B04	
	Q4	FANS	SIEMENS	5SY6306-7	INT.AUT 3P C 6A 6KA	1	PCE	3/B06	
	Q7	CONDENSER	SIEMENS	5SY6216-7	INT.AUT 2P C 16A 6KA	1	PCE	3/B07	
	QS		ABB	OT45E4+OHY2AJ+OXS5X85	SEZ. 4P In= 45A+MANIGLIA+ALBERO (TAGLIATO A 75mm)	1		3/A01	
	R1	E.HEATERS				1		3/E04	
	RSF	PHASE SEQUENCE				1		3/C02	
	SA	ROOM TEMPERATURE				1		6/B05	
	TR		100VA		CON FUS. A BORDO	1		3/C07	
				DATE	09/09/2006				
				DRAW.	POLIDO				
				CHECK	POLIDO				
REV.	MODIFICATIONS	DATE	SIGN.	APPR.	M.M.	REPLACE	REPLACE	ORIGIN:	
1		2		3		4		5	
								HF620C0556	
								SHEET 22 OF 23	
								CONTINUE 23	



NOTE INTERNE—INTERNAL NOTE

- 1.
3. PREDISPORRE FILI VALVOLA ELETTRONICA EV1/2
4. LASCIARE LATO POSTERIORE DELLE MORSETTIERE TUTTO LIBERO

1	2	3	4	5	6	7	8	
A								A
B								B
C								C
D								D
E								E
F								F
				DATE	09/09/2006			
				DRAW.				
				CHECK		HF620C0556		
REV.	MODIFICATIONS	DATE	SIGN.	APPR.	REPLACE	REPLACE	ORIGIN:	
1		2		3		4		
							5	
							6	
							7	
							8	
							SHEET 23 OF 23	
							CONTINUE	