



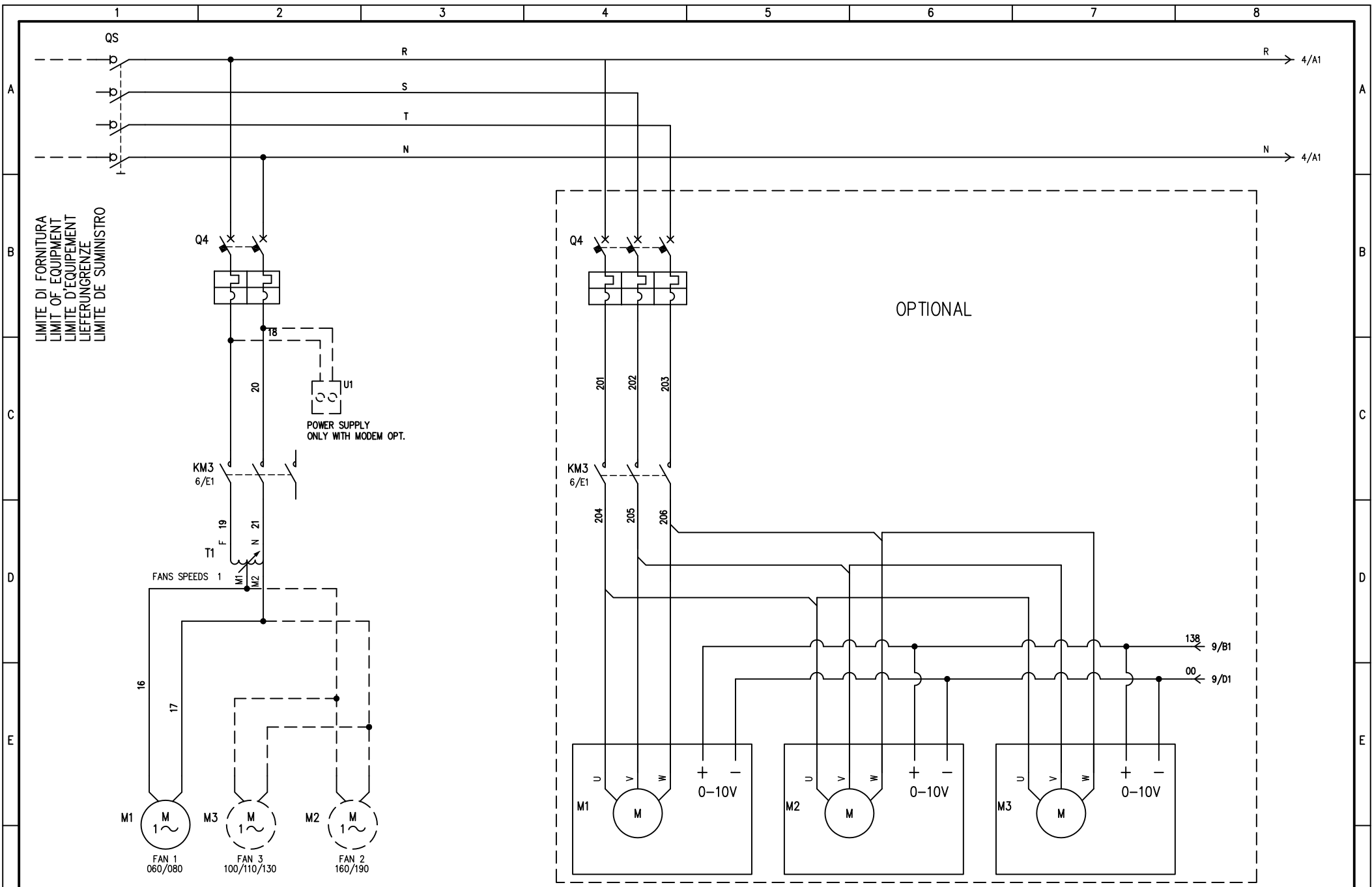
**CARATTERISTICHE ELETTRICHE
ELECTRIC CHARACTERISTIC**

SERIES DHCU/DC080...230.....pC01
MODELL 080-230 230V I _{max} =7A; I _{n-rusch} current=16A
ELECTRIC CHARACTERISTIC

VERS.

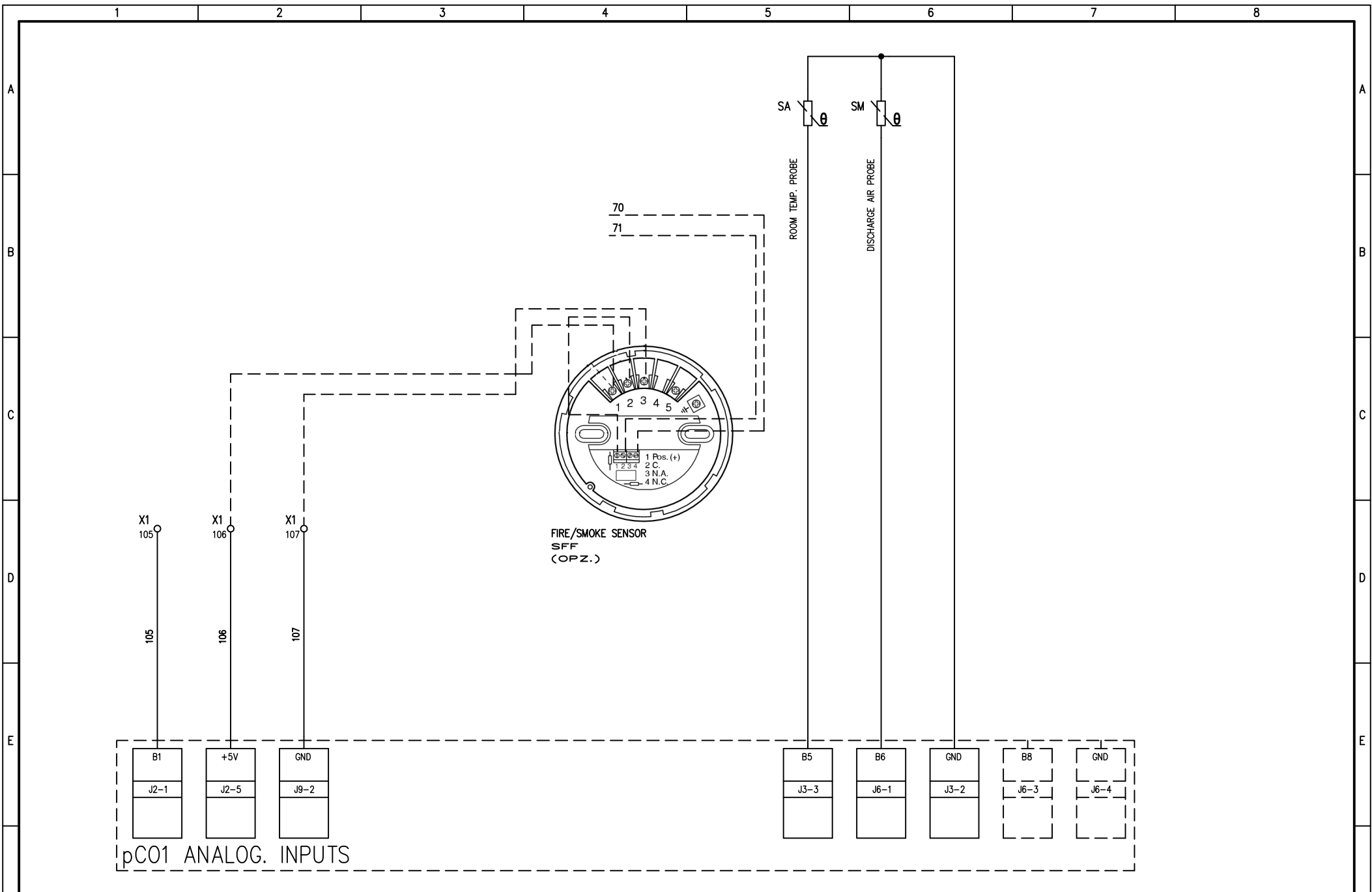
"F"= SOLO FREDDO-ONLY COOLING

A	REVISIONE VENTILATORI	14/06/2007	C.N.	DATE	30/08/2005		HF620C0553		
				DRAW.	POLIDO		HF620D0553		
				CHECK	POLIDO				SHEET 1 OF 24
REV.	MODIFICATIONS	DATE	SIGN.	APPR.	M.M.	REPLACE	REPLACE	ORIGIN:	CONTINUE 2
1	2	3	4	5	6	7	8		

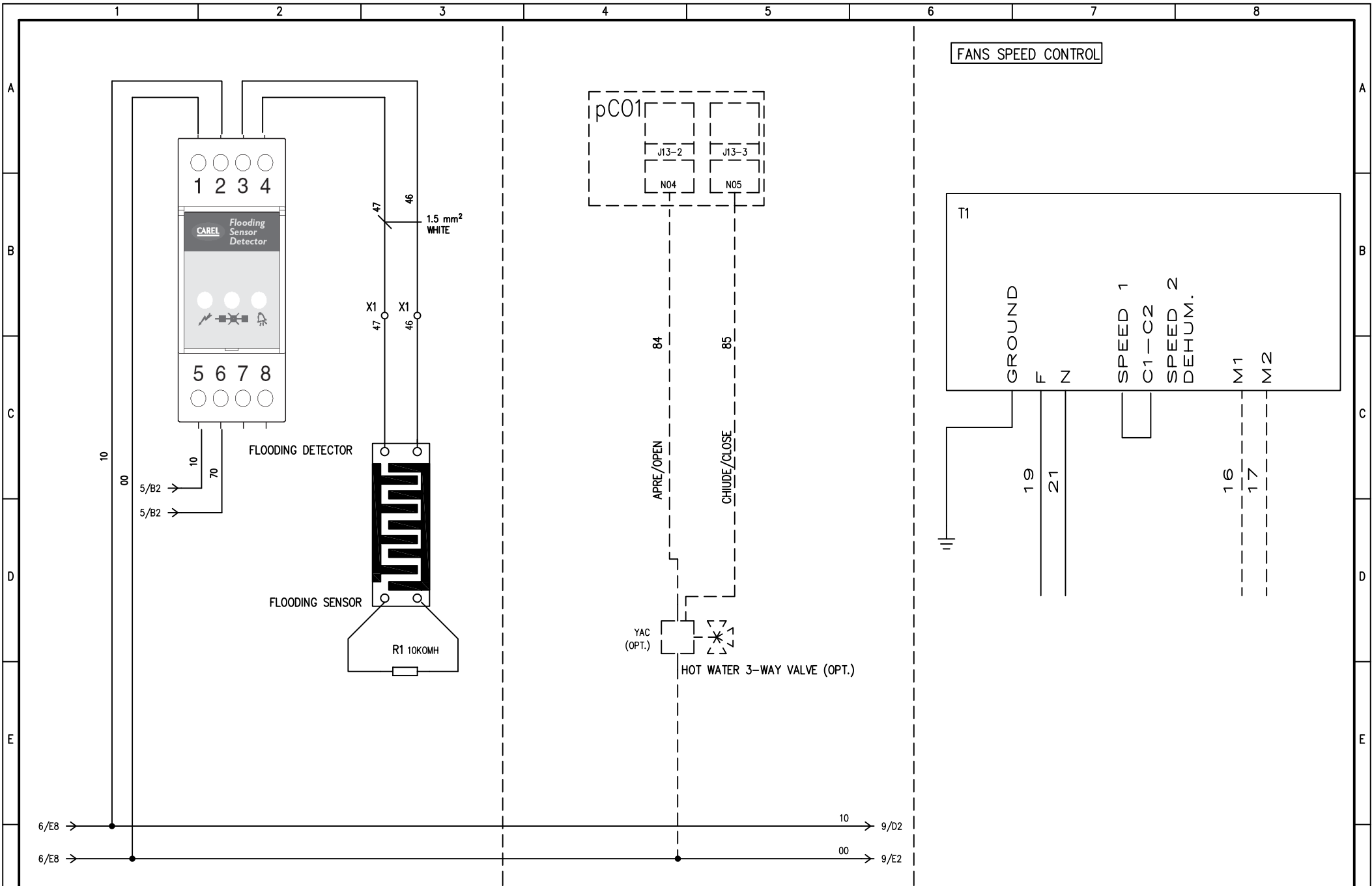


REV.	MODIFICATIONS	DATE	SIGN.	APPR.	M.M.	REPLACE	REPLACE	ORIGIN:	HF620C0553	HF620D0553	SHEET 3 OF 24
1		2									CONTINUE 4





				DATE	30/08/2005				HF620C0553			
				DRAW.	POLIDO		LENNOX					
				CHECK	POLIDO				HF620D0553		SHEET 7 OF 24	
REV.	MODIFICATIONS	DATE	SIGN.	APPR.	M.M.	REPLACE	REPLACE	ORIGIN:			CONTINUE 8	
1		2			3		4	5	6	7	8	

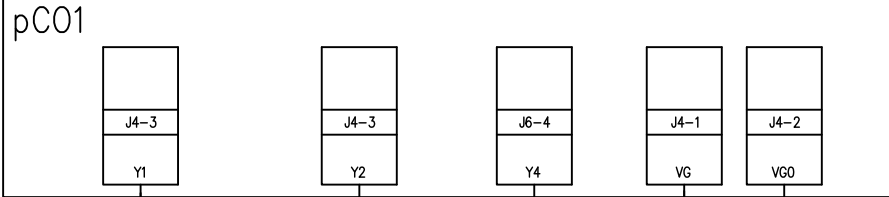


DATE	30/08/2005							
DRAW.	POLIDO							
CHECK	POLIDO							
REV.	MODIFICATIONS	DATE	SIGN.	APPR.	M.M.	REPLACE	REPLACE	ORIGIN:
1		2		3		4		

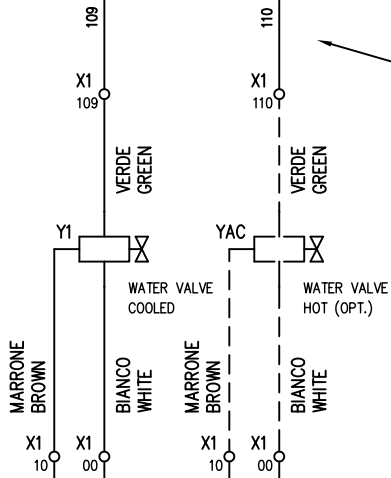


HF620C0553	
HF620D0553	
SHEET 8 OF 24	
CONTINUE	9

CONTROLLO VALVOLE 0-10V
VALVES CONTROL 0-10V



3/D8 138



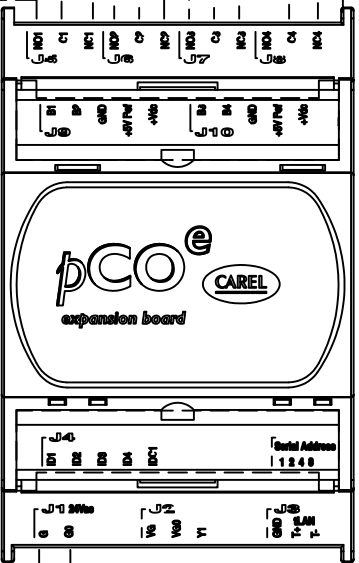
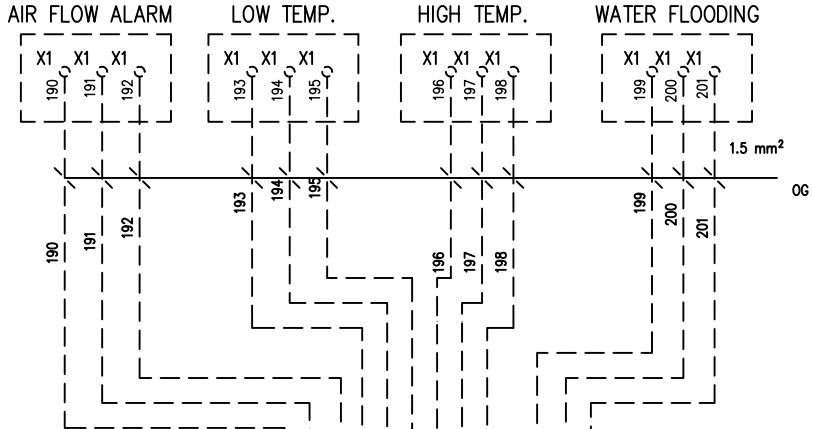
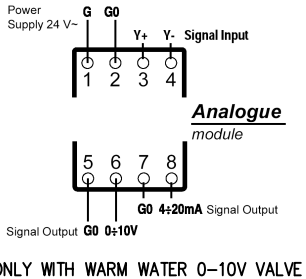
3/D8 00

8/F3 10

8/F3 00

VALVOLA MODULANTE ACQUA FREDDA (OPT.)
CHILLED WATER MODULATOR (OPT.)
VANNE DE REGULATION EAU FRAISSE (OPT.)
WEGEKALTWASSERVENTIL (ZUB.)
VALVULA DE 3 VIAS AGUA REFRIGERADA (OPC.)

VALVOLA ACQUA CALDA (OPT.)
HOT WATER VALVE (OPT.)
VANNE DE REGUL. EAU CHAUDE (OPT.)
WEGEWARMWASSERVENTIL (ZUB.)
VALVULA AGUA CALIENTE (OPC.)



pCOE BOARD

DATE 30/08/2005
DRAW. POLIDO
CHECK POLIDO



HF620C0553

HF620D0553

SHEET 9 OF 24
CONTINUE 10

REV. MODIFICATIONS DATE SIGN. APPR. M.M. REPLACE REPLACE ORIGIN:

1

2

3

4

5

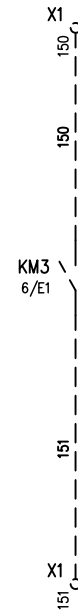
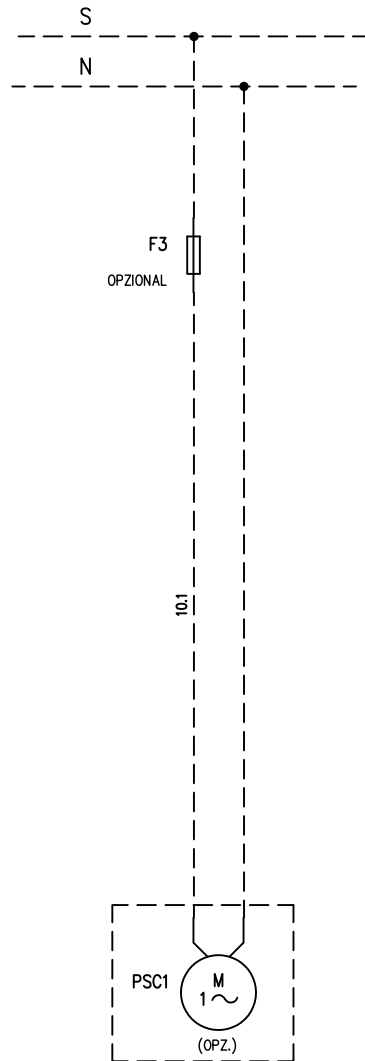
6

7

8

CONDENSATE DRAIN PUMP
 POMPE A EAU CONDENSEUY
 KONDENSATWASS PUMPE
 BOMBA DESEQUE CONDEN.

SEGNALAZIONE DELLO STATO DELL'UNITA' (OPZ.)
 UNIT STATUS SIGNAL (OPT.)
 ETAT DES SIGNAUX DE L'UNITE' (OPT.)
 STATUSMELDEKONTAKT (ZUB.)
 SENALIZACION DEL ESTADO DE LA UNIDAD (OPC.)



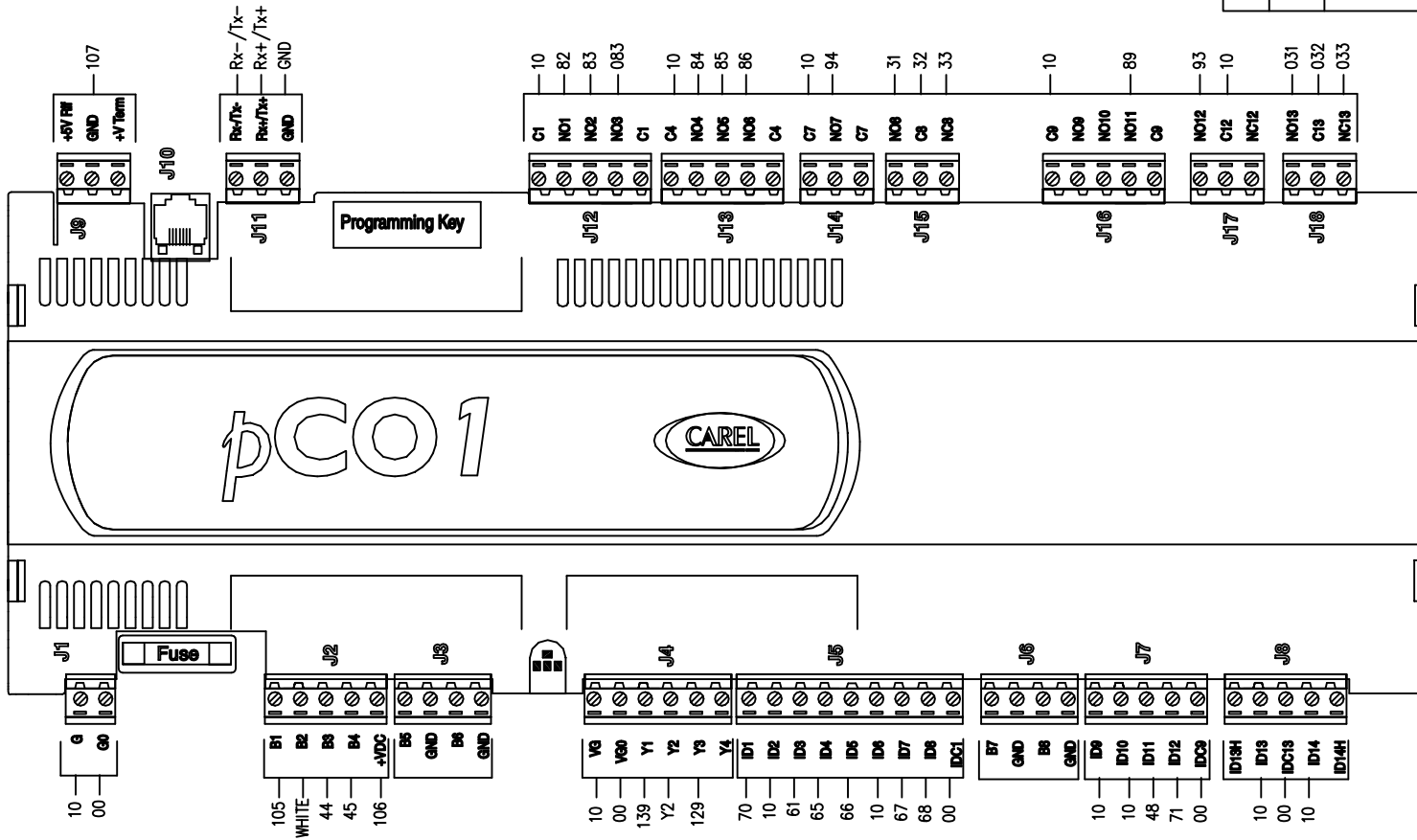
REV.		MODIFICATIONS		DATE	SIGN.	APPR.	M.M.	REPLACE	REPLACE	ORIGIN:	HF620C0553	SHEET 10 OF 24	
1		2									HF620D0553	CONTINUE 11	



LAYOUT SCHEDA ELECTRONIC BOARD LAYOUT

CONNETTORI PHOENIX A SPINA COMBICON CON PASSO 5.08 mm. COLORE VERDE TIPO MSTB 2,5 :

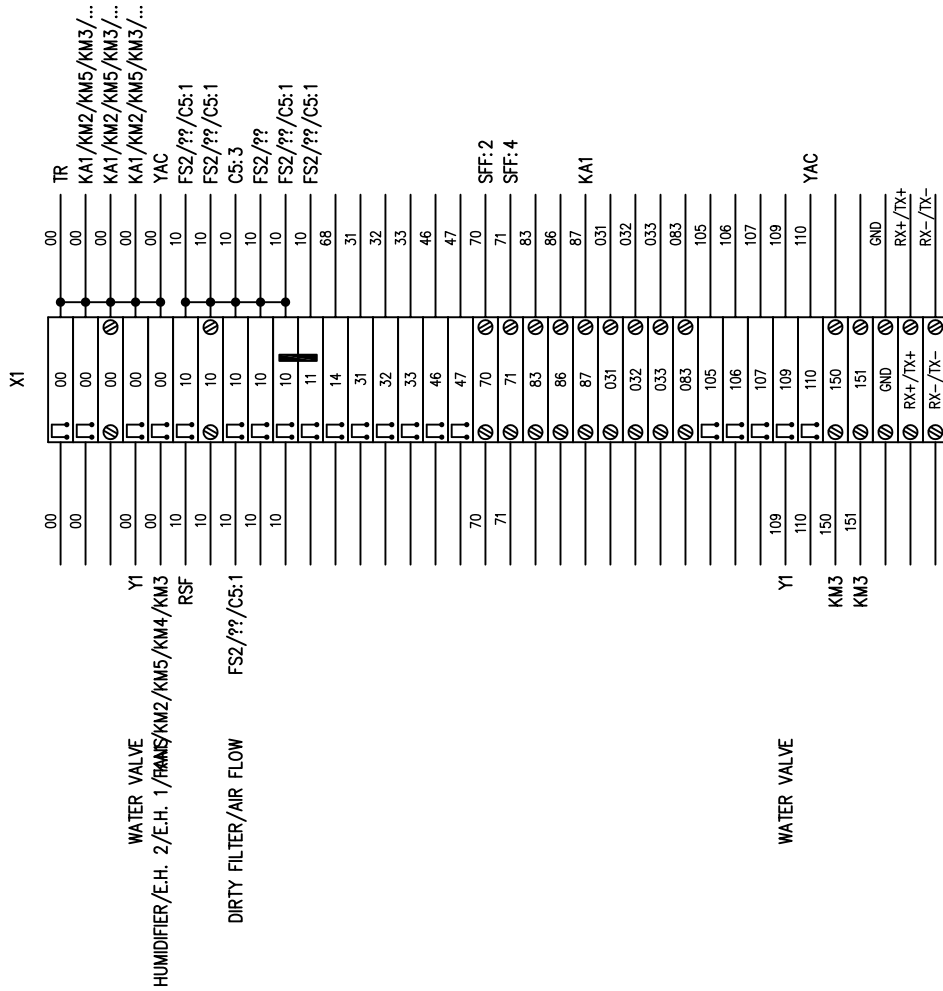
SIG.	POLI	TIPO	CODICE	SIG.	POLI	TIPO	CODICE
J1	2	2,5/2-ST	17 57 01 9	J11	3	2,5/3-ST	17 57 02 2
J2	5	2,5/5-ST	17 57 04 8	J12	5	2,5/5-ST	17 57 04 8
J3	4	2,5/4-ST	17 57 03 5	J13	5	2,5/5-ST	17 57 04 8
J4	6	2,5/6-ST	17 57 05 1	J14	3	2,5/3-ST	17 57 02 2
J5	9	2,5/9-ST	17 57 08 0	J15	3	2,5/3-ST	17 57 02 2
J6	4	2,5/4-ST	17 57 03 5	J16	5	2,5/5-ST	17 57 04 8
J7	5	2,5/5-ST	17 57 04 8	J17	3	2,5/3-ST	17 57 02 2
J8	5	2,5/5-ST	17 57 04 8	J18	3	2,5/3-ST	17 57 02 2
J9	3	2,5/3-ST	17 57 02 2				PCDUMID



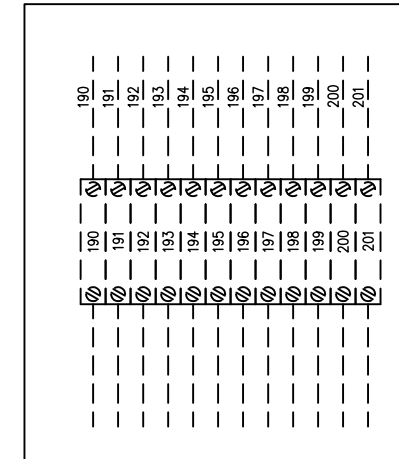
REV.	MODIFICATIONS	DATE	SIGN.	APPR.	M.M.	REPLACE	REPLACE	ORIGIN:	HF620C0553	HF620D0553	SHEET 11 OF 24
1		2									CONTINUE 12



TERMINAL STRIP
BÖRNIER
KLEMMLEISTE
KLEMMLEISTE



ALARM OPTION



REV.	MODIFICATIONS	DATE	SIGN.	APPR.	M.M.	REPLACE	REPLACE	ORIGIN:
1		2		3		4		5



HF620C0553

HF620D0553

SHEET 12 OF 24
CONTINUE 13

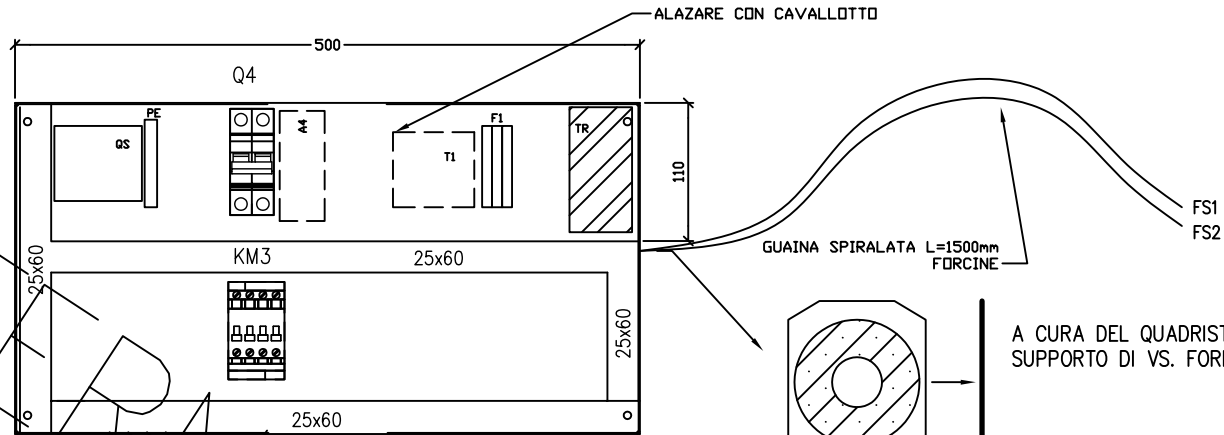
LAYOUT MOD.080/110

PIASTRA DI FONDO NS. COD. HF17000909

F1=USARE MORSETTI PORTAFUBILI PHOENIX UK5-HESI INTERBLOCATI



LASCARE LATO INFERIORE DEL SEZIONATORE LIBERO PER INGRESSO LINEA

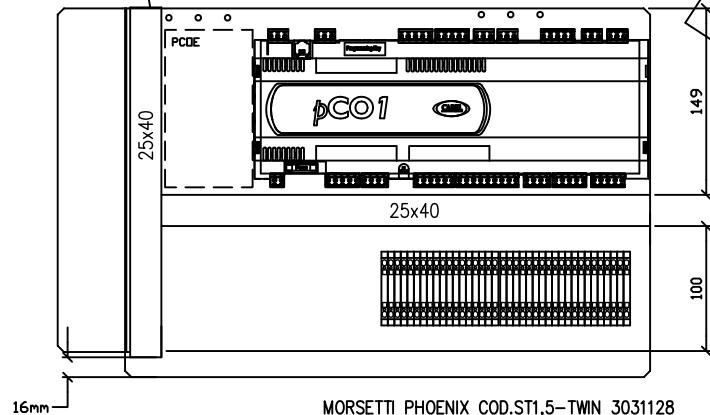


A CURA DEL QUADRISTA: FORNIRE IL TOROIDE SU SUPPORTO DI VS. FORNITURA

ALLEN
US
ONLY

FORNIRE PRECABLATA FILI L=150mm

GUAINA SPIRALATA L=150mm



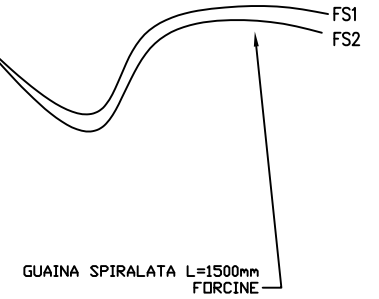
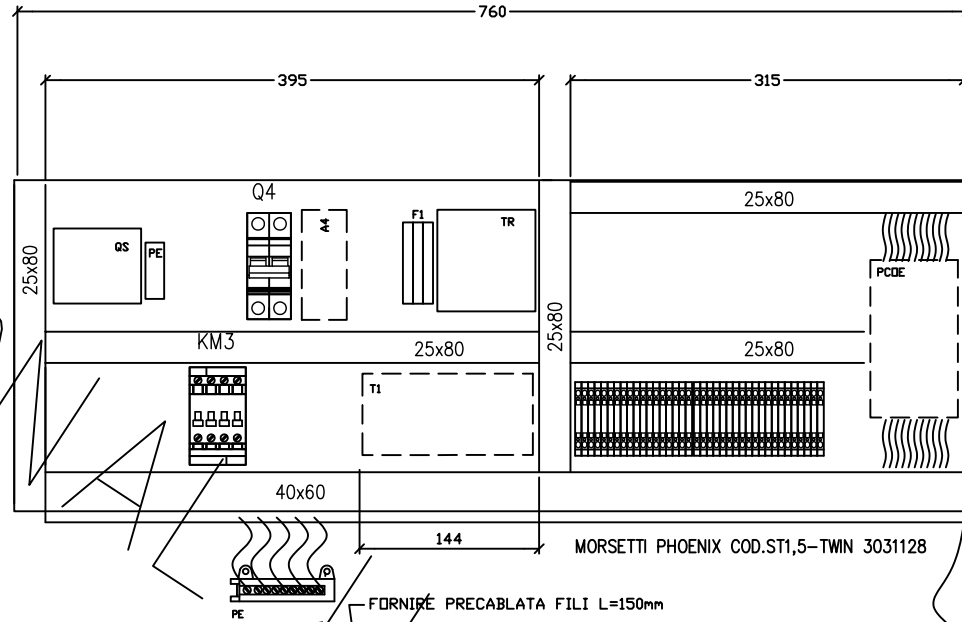
MORSETTI PHOENIX COD.ST1,5-TWIN 3031128 FISSARE SU GUIDA OMEGA CON FORI FATTI

REV.	MODIFICATIONS	DATE	SIGN.	APPR.	M.M.	REPLACE	REPLACE	ORIGIN:	LENNOX	HF620C0553	HF620D0553	SHEET 13 OF 24
1		2				3	4	5	6	7	8	CONTINUE 14

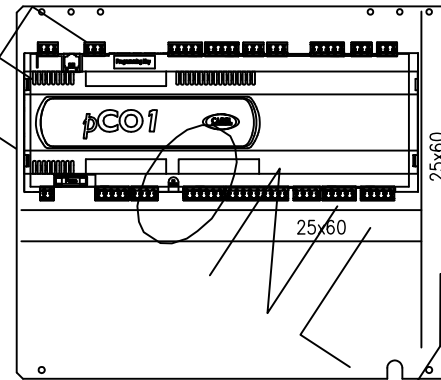
LAYOUT 140/160

PIASTRA DI FONDO NS. COD. HF17000756

F1=USARE MORSETTI PORTAFUBBI PHOENIX
UK5-HESI
INTERBLOCATI



LASCARE LATO INFERIORE DEL SEZIONATORE
LIBERO PER INGRESSO LINEA



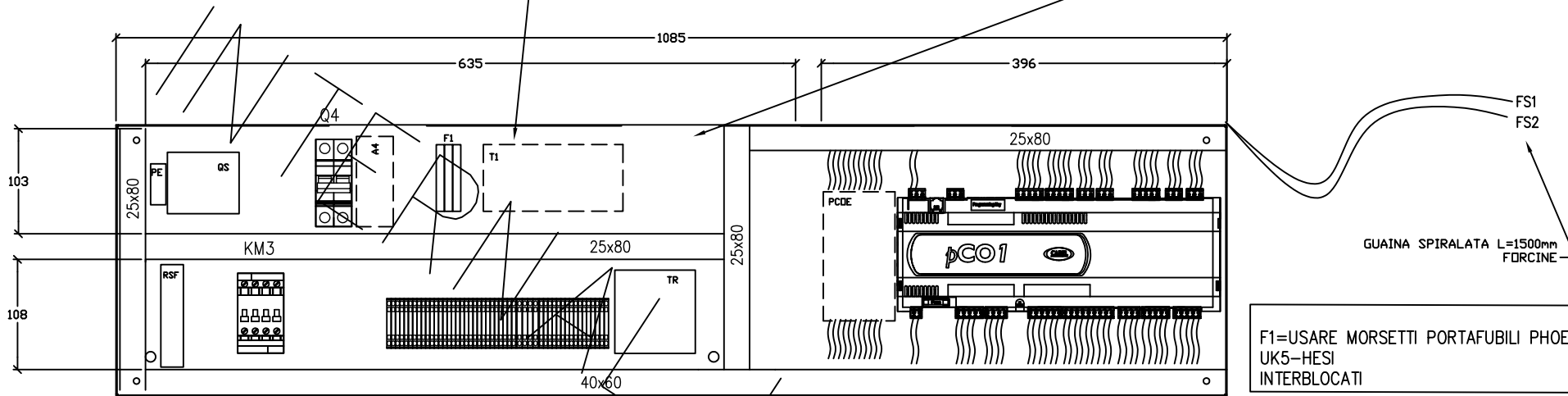
REV.	MODIFICATIONS	DATE	SIGN.	APPR.	M.M.	REPLACE	REPLACE	ORIGIN:	LENNOX	HF620C0553	HF620D0553	SHEET 14 OF 24
1		2			3			5				CONTINUE 15

LAYOUT 200/230

PIASTRA FI FONDO NS. COD. HF17000879

COPRIRE QUESTA PARTE CON LASTRA DI POLICARBONATO
ALATEZZA UTILE FILO MANOVRA B/P H=140max

COPRIRE CON LASTRA DI PLEXIGLASS
NS. COD. HF55000040

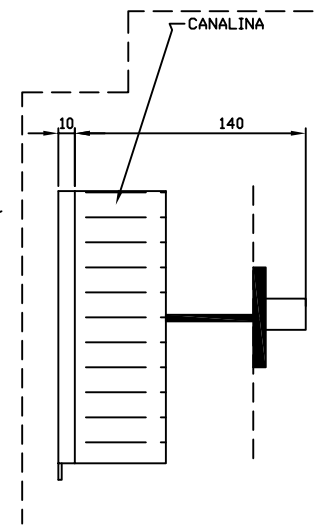


MORSETTI PHOENIX COD.ST1,5-TWIN 3031128

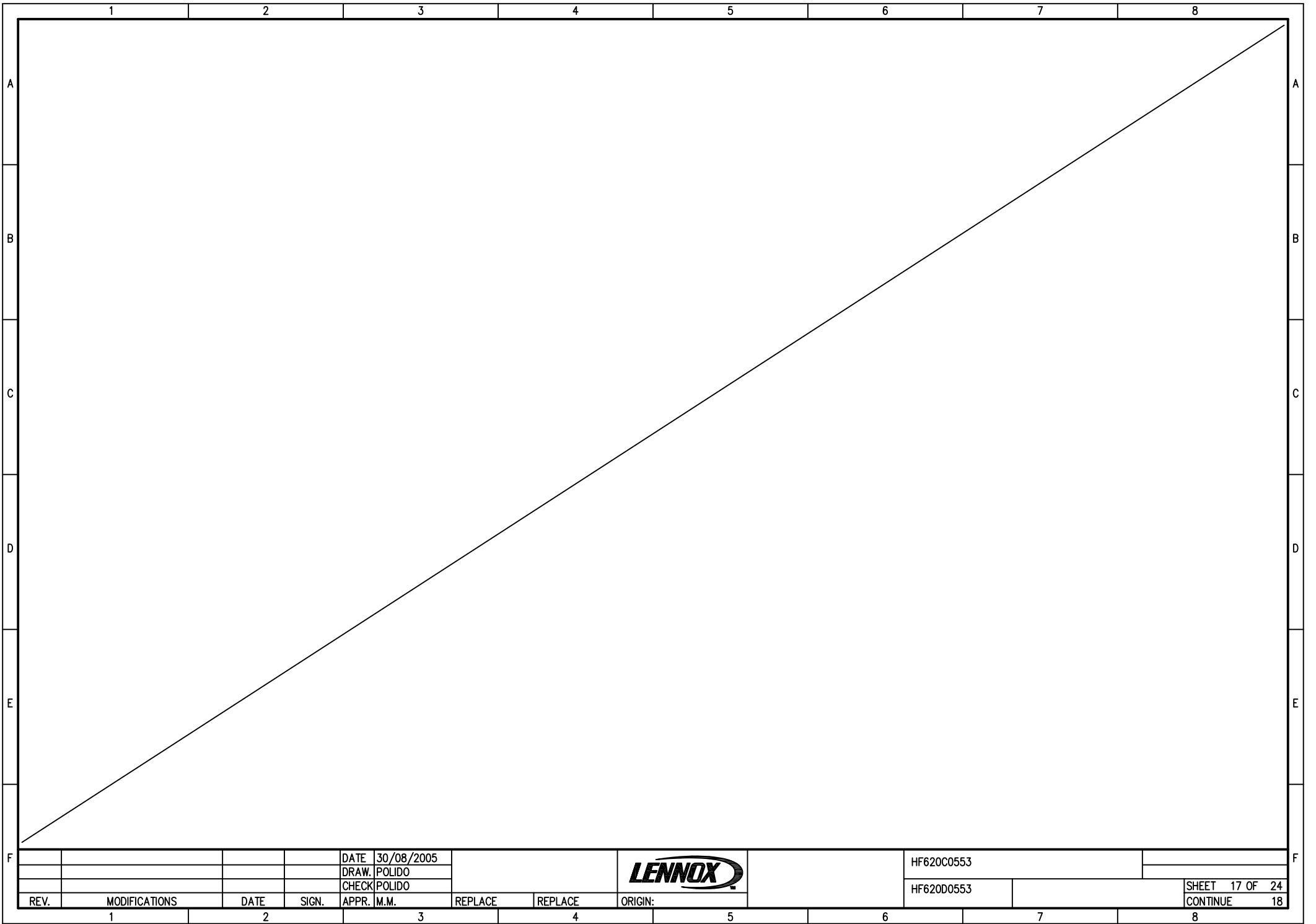


**LASCARE LATO INFERIORE DEL SEZIONATORE
LIBERO PER INGRESSO LINEA**

USE ONLY



				DATE	30/08/2005				HF620C0553			
				DRAW.	POLIDO				HF620D0553			
				CHECK	POLIDO						SHEET 15 OF 24	
REV.	MODIFICATIONS	DATE	SIGN.	APPR.	M.M.	REPLACE	REPLACE	ORIGIN:			CONTINUE 16	
1		2		3		4		5	6	7	8	



REV.	MODIFICATIONS	DATE	SIGN.	APPR.	M.M.	REPLACE	REPLACE	ORIGIN:			HF620C0553	SHEET 17 OF 24	
1		2		3		4		5		6	7	8	18
											HF620D0553	CONTINUE	

	1	2	3	4	5	6	7	8	
A									A
B									B
C									C
D									D
E									E
F									F
				DATE	30/08/2005				
				DRAW.	POLIDO				
				CHECK	POLIDO				
REV.	MODIFICATIONS	DATE	SIGN.	APPR.	M.M.	REPLACE	REPLACE	ORIGIN:	
1		2		3		4		5	
						6		7	
						8			

DATE 30/08/2005

DRAW. POLIDO

CHECK POLIDO



HF620C0553


HF620D0553

SHEET 18 OF 24

CONTINUE 19

1	2		3		4		5		6		7		8	
080/110	Ref-mark	Function		Technical data		Item code		Description			Amount	M.U.	Position	
	EV1										1		7/B05	
	EV2										1		7/B05	
	F1/2/3			4AF				FUSIBILE 5X20			1	PCE	3/D08	
	KM3	EVAP. FANS		SIEMENS/AEG		3RT1016-1AB01		TELER. 4KW 400V 3P BOB. 24V AC			1	PCE	4/E07	
REV.		MODIFICATIONS		DATE	SIGN.	APPR.	M.M.	REPLACE	REPLACE	ORIGIN:	HF620C0553		HF620D0553	
1				30/08/2005							HF620C0553		SHEET 19 OF 24	
											HF620D0553		CONTINUE 20	




1	2		3	4	5	6	7	8	
080-110	Ref-mark	Function	Technical data	Item code	Description	Amount	M.U.	Position	
	M1	EVAP. FANS				1		3/E05	
	Q4	FANS.	SIEMENS/AEG	5SY6220-7	INT.AUT. 2P C 20A 6kA	1	PCE	3/B06	
	QS		ABB	OT25E4+0HY2AJ+0*S5*85	SEZ. 4P 25A (LA LUNGHEZZA DELL'ALBERO DI COMANDO DEVE ESSERE DI 75mm)	1		3/A01	
	RSF	PHASE SEQUENCE				1		3/C02	
	SA	ROOM TEMP.				1		6/B05	
	TR		100VA		CON FUS. A BORDO	1		3/C07	
REV.		MODIFICATIONS	DATE	SIGN.	APPR.	M.M.	REPLACE	REPLACE	ORIGIN:
			30/08/2005						
			POLIDO						
			POLIDO						
							HF620C0553		
							HF620D0553	SHEET 20 OF 24	
							CONTINUE		21

1	2		3		4		5		6		7		8	
140-160	Ref-mark	Function		Technical data		Item code		Description			Amount	M.U.	Position	
	EV1										1		7/B05	
	EV2										1		7/B05	
	F1/2/3			4AF				FUSIBILE 5X20			1	PCE	3/D08	
	KM3	EVAP. FANS		SIEMENS/AEG		3RT1016-1AB01		TELER. 4KW 400V 3P BOB. 24V AC			1	PCE	4/E07	
REV.		MODIFICATIONS		DATE	SIGN.	APPR.	M.M.	REPLACE	REPLACE	ORIGIN:	HF620C0553		HF620D0553	
				30/08/2005										
				POLIDO										
				POLIDO										
												SHEET 21 OF 24		
												CONTINUE 22		



1	2		3		4		5		6		7		8	
140-160	Ref-mark	Function		Technical data		Item code		Description			Amount	M.U.	Position	
	M1/M2	EVAP. FANS									1		3/E05	
	Q4	FANS		SIEMENS/AEG		5SY6220-7		INT. AUT. 2P C 20A 6kA			1	PCE	3/B06	
	Q7	CONDENSER		SIEMENS/AEG		5SY6216-7		INT. AUT. 2P C 16A 6kA			1	PCE	3/B07	
	QS			ABB		OT32E4					1		3/A01	
	RSF	PHASE SEQUENCE									1		3/C02	
	SA	ROOM TEMP									1		6/B05	
	TR			100VA				CON FUS. A BORDO			1		3/C07	
REV.		MODIFICATIONS		DATE	SIGN.	APPR.	M.M.	REPLACE	REPLACE	ORIGIN:	HF620C0553		HF620D0553	
				30/08/2005							SHEET 22 OF 24		CONTINUE 23	



1	2		3	4	5		6	7	8				
200/230	Ref-mark	Function		Technical data	Item code		Description		Amount	M.U.	Position		
A	EV1								1		7/B05		
	EV2								1		7/B05		
	F1/2/3			4AF	PHOENIX	FUSIBILE 5X20			1	PCE	3/D08		
B	KM3	EVAP. FANS		SIEMENS/AEG	3RT1016-1AB01	TELER. 4KW 400V 3P B0B. 24V AC			1	PCE	4/E07		
C													
D													
E													
F													
				DATE	30/08/2005			HF620C0553					
				DRAW.	POLIDO			HF620D0553				SHEET 23 OF 24	
				CHECK	POLIDO							CONTINUE 24	
REV.	MODIFICATIONS		DATE	SIGN.	APPR.	M.M.	REPLACE	REPLACE	ORIGIN:				
1			2			3		4	5	6	7	8	

1	2	3	4	5	6	7	8	
200/230	Ref-mark	Function	Technical data	Item code	Description	Amount	M.U.	Position
A	M1/M2	EVAP. FANS				1		3/E05
	Q4	FANS	SIEMENS/AEG	5SY6210-7	INT.AUT. 2P C 10A 6kA	1	PCE	3/B06
	QS		ABB	OT45E4+OHY2AJ+0*S5*85	SEZ. 4P 45A (LA LUNGHEZZA DELL'ALBERO DI COMANDO DEVE ESSERE DI 75mm)	1		3/A01
B	RSF	PHASE SEQUENCE				1		3/C02
	SA	ROOM TEMPERATURE				1		6/B05
	TR		100VA		CON FUS. A BORDO	1		3/C07
C								C
D								D
E								E
F								F
				DATE	30/08/2005			
				DRAW.	POLIDO			
				CHECK	POLIDO			
REV.	MODIFICATIONS	DATE	SIGN.	APPR.	M.M.	REPLACE	REPLACE	ORIGIN:
1		2		3		4		5
								6
								7
								8
								HF620C0553
								HF620D0553
								SHEET 24 OF 24
								CONTINUE



HF620C0553

HF620D0553