



CARATTERISTICHE ELETTRICHE  
ELECTRIC CHARACTERISTIC

SERIE DHAU/DR201...401-pC01

Revisione	Foglio	Oggetto	Data	Responsabile
A	1	REVISIONE GENERALE	08/09/2005	POLIDO
B	1	AGGIORNATA SERRANDA	12/09/2005	POLIDO
C	1	CAMBIATO CABLAGGIO RSF	31/03/2006	POLIDO
D	1	TOLTO Q1 AGGIUNTO F2	04/05/2006	POLIDO
E	1	LONG DIST.KIT	22/05/2007	FF
F	1	INSERITA CONNESSIONE PGD3	30/05/2007	C.N.
G	1	SOSTITUITO INT. Q5	25/06/2007	C.N.
H	1	AGG. STATO UNITA'	15/10/2007	C.N.
I	1	AGG. LAYOUT CODE Q.E.	25/10/2007	C.N.

T-REF F					T-REF F+U				
	P total [kW]	OA [A]	FLA [A]	LRA [A]		P total [kW]	OA [A]	FLA [A]	LRA [A]
TREF DX 0201	7,3	14,5	20,8	86	TREF DX 0201	13,3	29,5	35,8	86
TREF DX 0251	7,6	15,1	20,8	98	TREF DX 0251	13,6	30,1	35,8	98
TREF DX 0261	8,824	17,4	23,7	130	TREF DX 0261	14,824	32,4	38,7	130
TREF DX 0271	9,816	21,0	27,3	130	TREF DX 0271	15,816	36,0	42,3	130
TREF DX 0301	10,93	23,1	36,3	130	TREF DX 0301	16,93	38,1	51,3	130
TREF DX 0401	13,636	26,4	36,4	135	TREF DX 0401	19,636	41,4	51,4	135
T-REF F+C					T-REF F+C+U				
	P total [kW]	OA [A]	FLA [A]	LRA [A]		P total [kW]	OA [A]	FLA [A]	LRA [A]
TREF DX 0201	13,7	42,4	48,7	86	TREF DX 0201	19,7	57,4	63,7	86
TREF DX 0251	14	43,0	48,7	98	TREF DX 0251	20	58,0	63,7	98
TREF DX 0261	15,224	45,2	51,5	130	TREF DX 0261	21,224	60,2	66,5	130
TREF DX 0271	19,416	62,7	69,0	130	TREF DX 0271	25,416	77,7	84,0	130
TREF DX 0301	20,53	64,8	78,0	130	TREF DX 0301	26,53	79,8	93,0	130
TREF DX 0401	23,236	68,1	78,1	135	TREF DX 0401	29,236	83,1	93,1	135

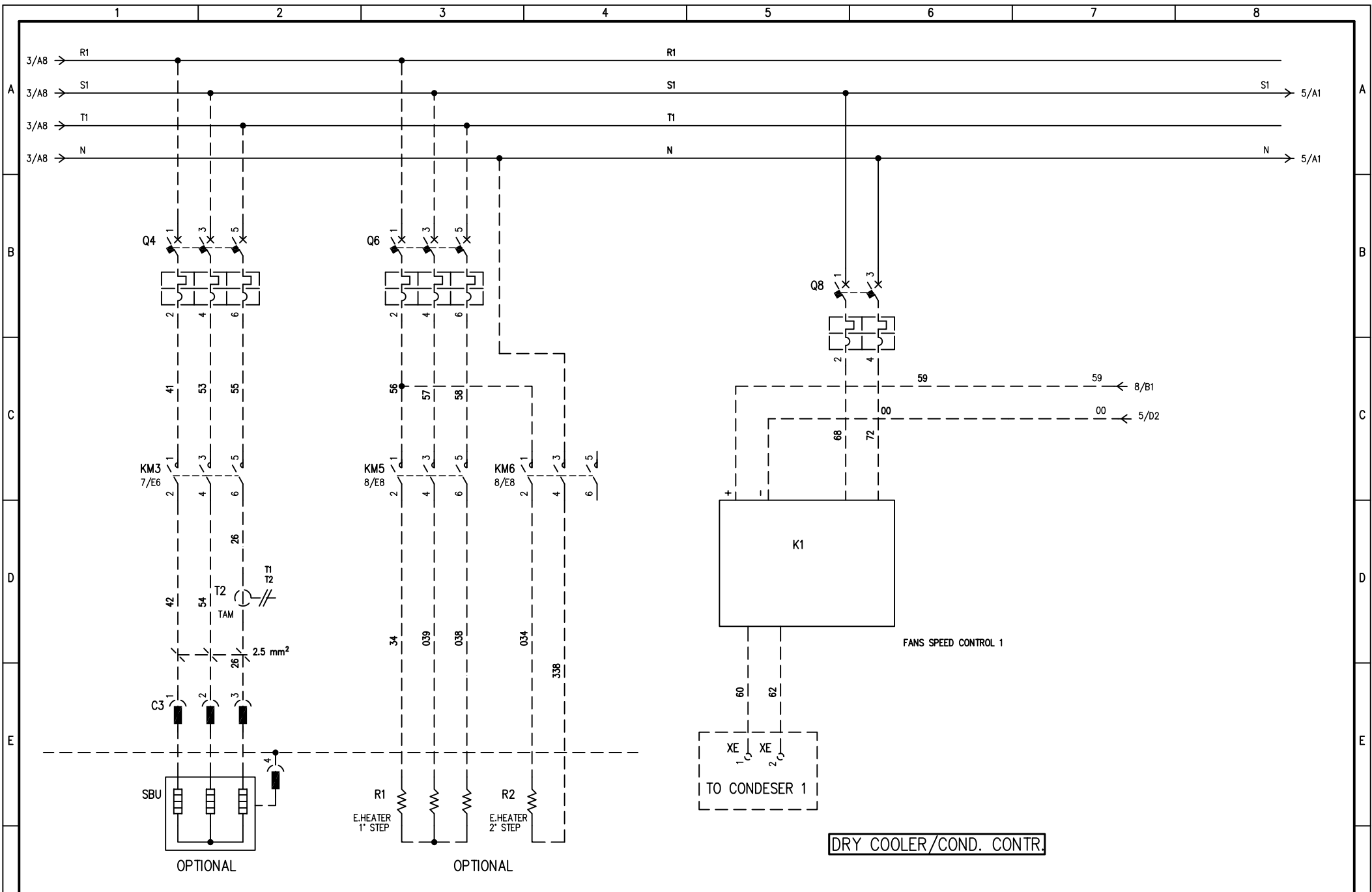
VERS.

"F"= SOLO FREDDO-ONLY COOLING  
 "F+C"= FREDDO/CALDO-ONLY COOLING/HEATING  
 "F+U"= FREDDO/UMIDITA'-COOLING/HUMIDITY  
 "F+C+U"= FREDDO/CALDO/UMIDITA'- COOLING/HEATING/HUMIDITY

DATE	09/09/2005	LENNOX		HF620C0299		SHEET 1 OF 22	
DRAW.	P.M.					CONTINUE 2	
CHECK	P.M.						
REV.	MODIFICATIONS	DATE	SIGN.	APPR.	M.M.	REPLACE	REPLACE
1		2		3		4	

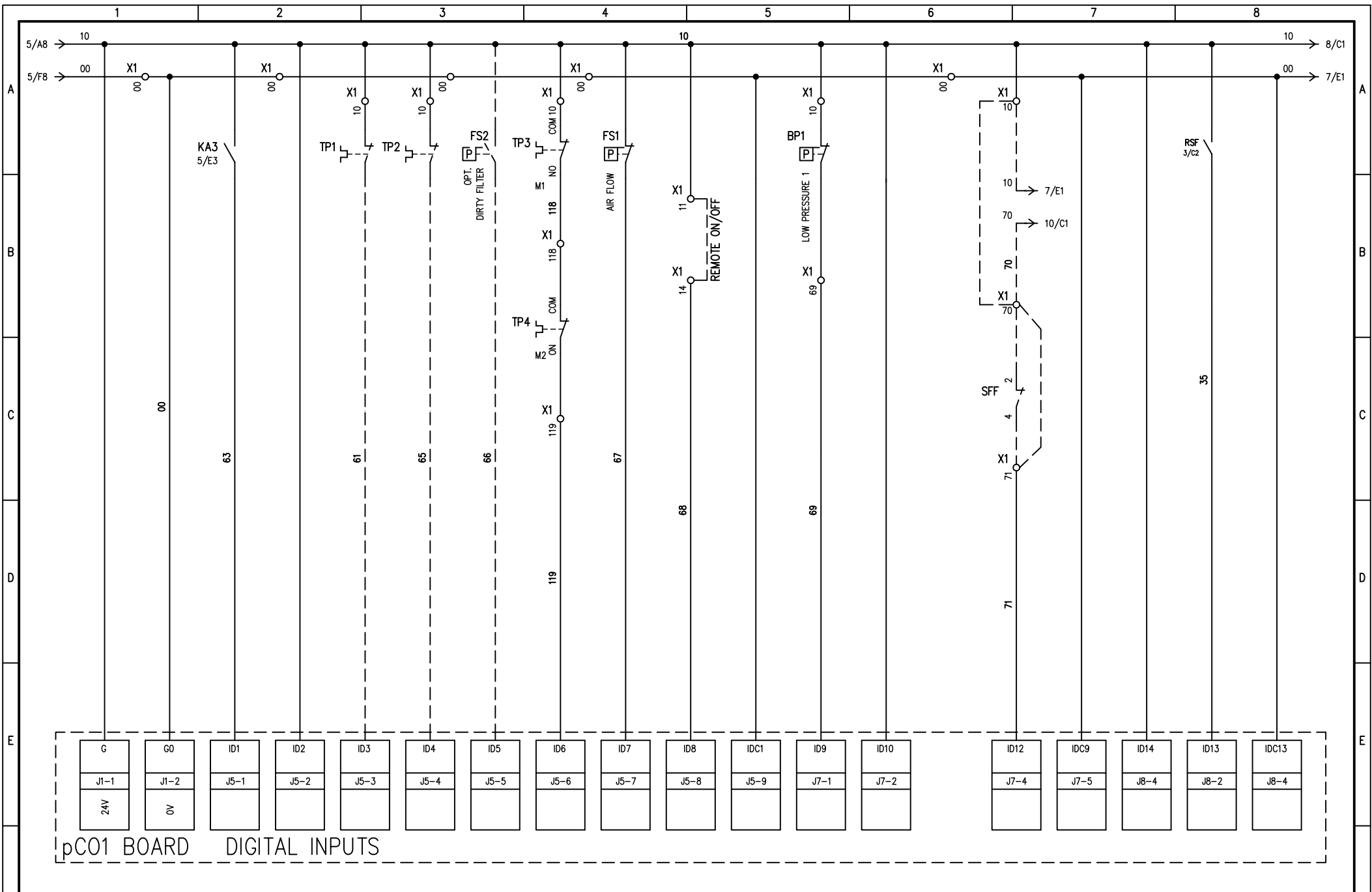






				DATE 09/09/2005				<b>LENNOX</b>							
				DRAW. P.M.											
				CHECK P.M.											
REV.	MODIFICATIONS	DATE	SIGN.	APPR.	M.M.	REPLACE	REPLACE	ORIGIN:			HF620C0299		SHEET 4 OF 22		
1		2		3		4		5	6	7	8	CONTINUE	5		

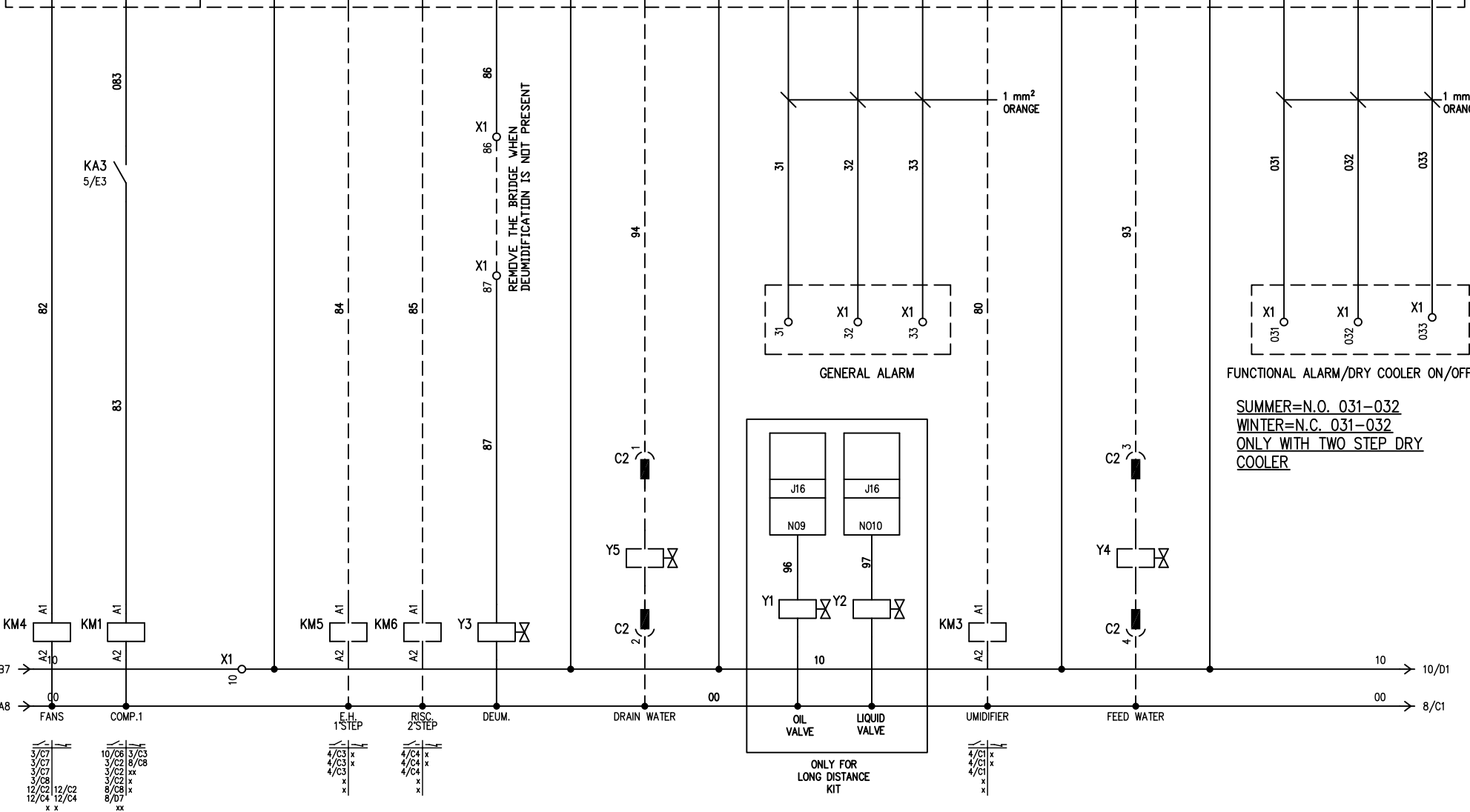
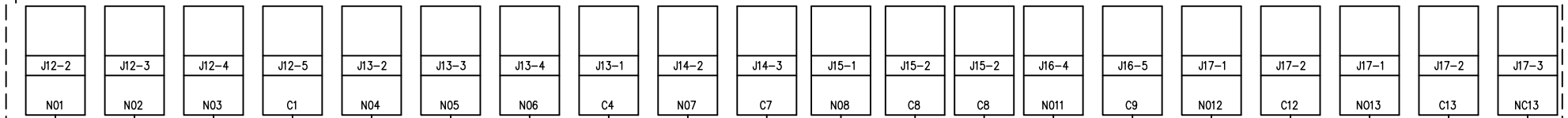




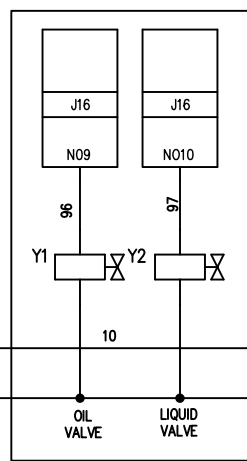
pC01 BOARD DIGITAL INPUTS

				DATE 09/09/2005				<b>LENNOX</b>							
				DRAW. P.M.											
				CHECK P.M.											
REV.	MODIFICATIONS	DATE	SIGN.	APPR.	M.M.	REPLACE	REPLACE	ORIGIN:			HF620C0299		SHEET 6 OF 22		
1		2		3		4		5	6	7	8	CONTINUE	7		

pCO1 DIGITAL OUTPUTS



SUMMER=N.O. 031-032  
 WINTER=N.C. 031-032  
 ONLY WITH TWO STEP DRY COOLER



- 3/C1
- 3/C7
- 3/C7
- 3/C7
- 3/C8
- 12/C2
- 12/C4
- x
- x

- 10/C8
- 3/C3
- 3/C2
- 3/C2
- 8/C3
- 8/D1
- x
- x

- 4/C3
- 4/C3
- 4/C3
- x

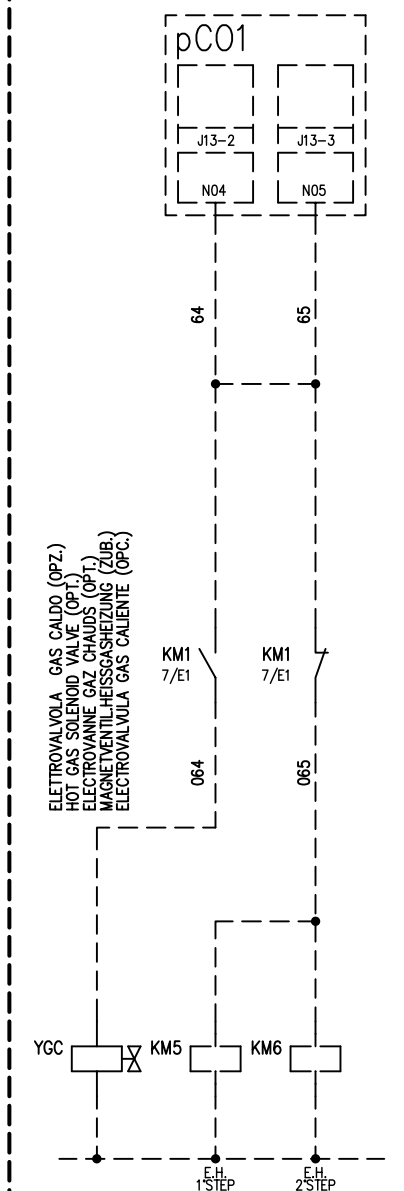
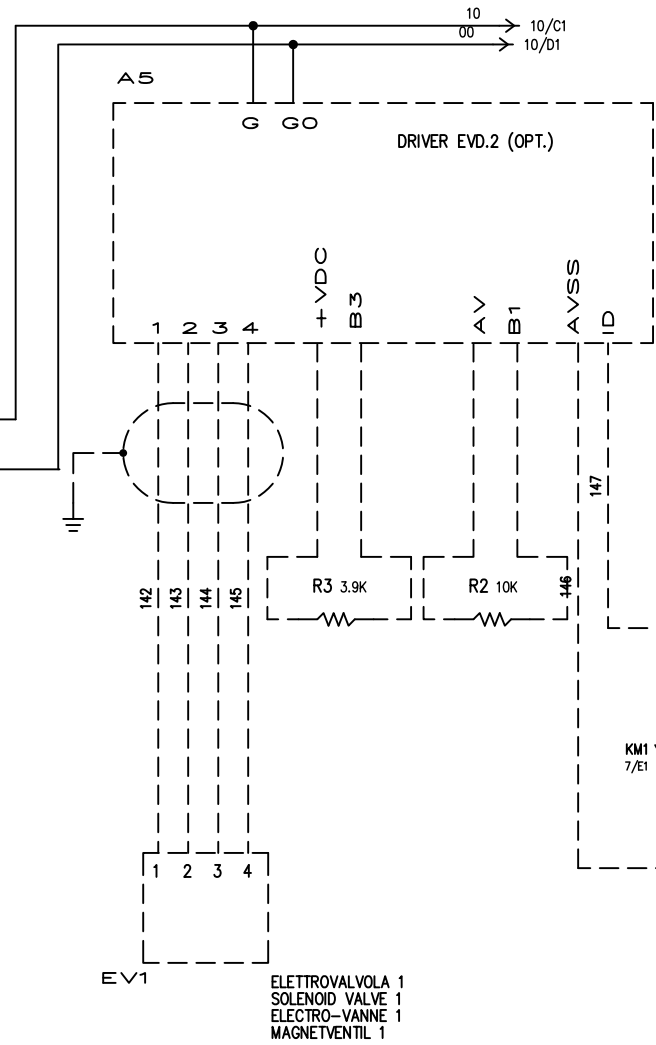
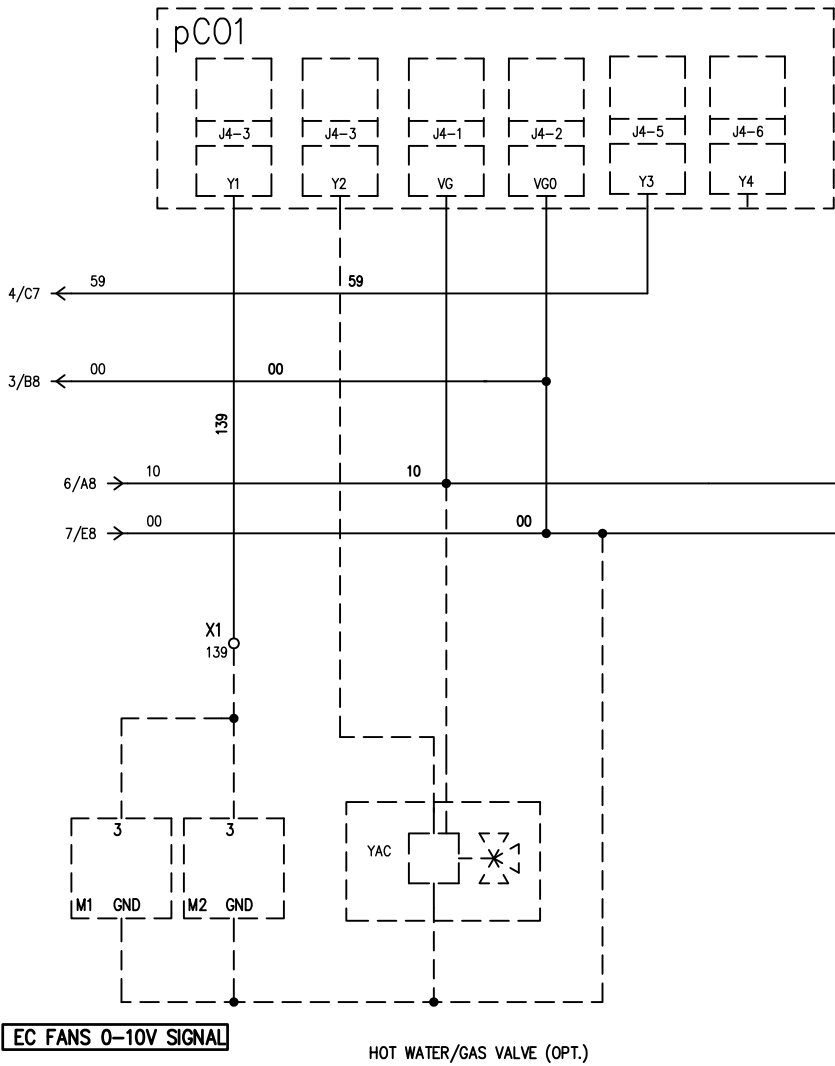
- 4/C4
- 4/C4
- 4/C4
- x

- 4/C1
- 4/C1
- 4/C1
- x

REV.		MODIFICATIONS		DATE	09/09/2005	DRAW. P.M.		<b>LENNOX</b>	HF620C0299		SHEET 7 OF 22	
				DATE		CHECK P.M.					CONTINUE	8
1	2	3	4	5	6	7	8					

CONTROLLO VENTILATORI  
FANS MOTOR CONTROL  
CONTROL VENTILATEUR

ELETTRONIC MOD. VALVE FOR HOR GAS

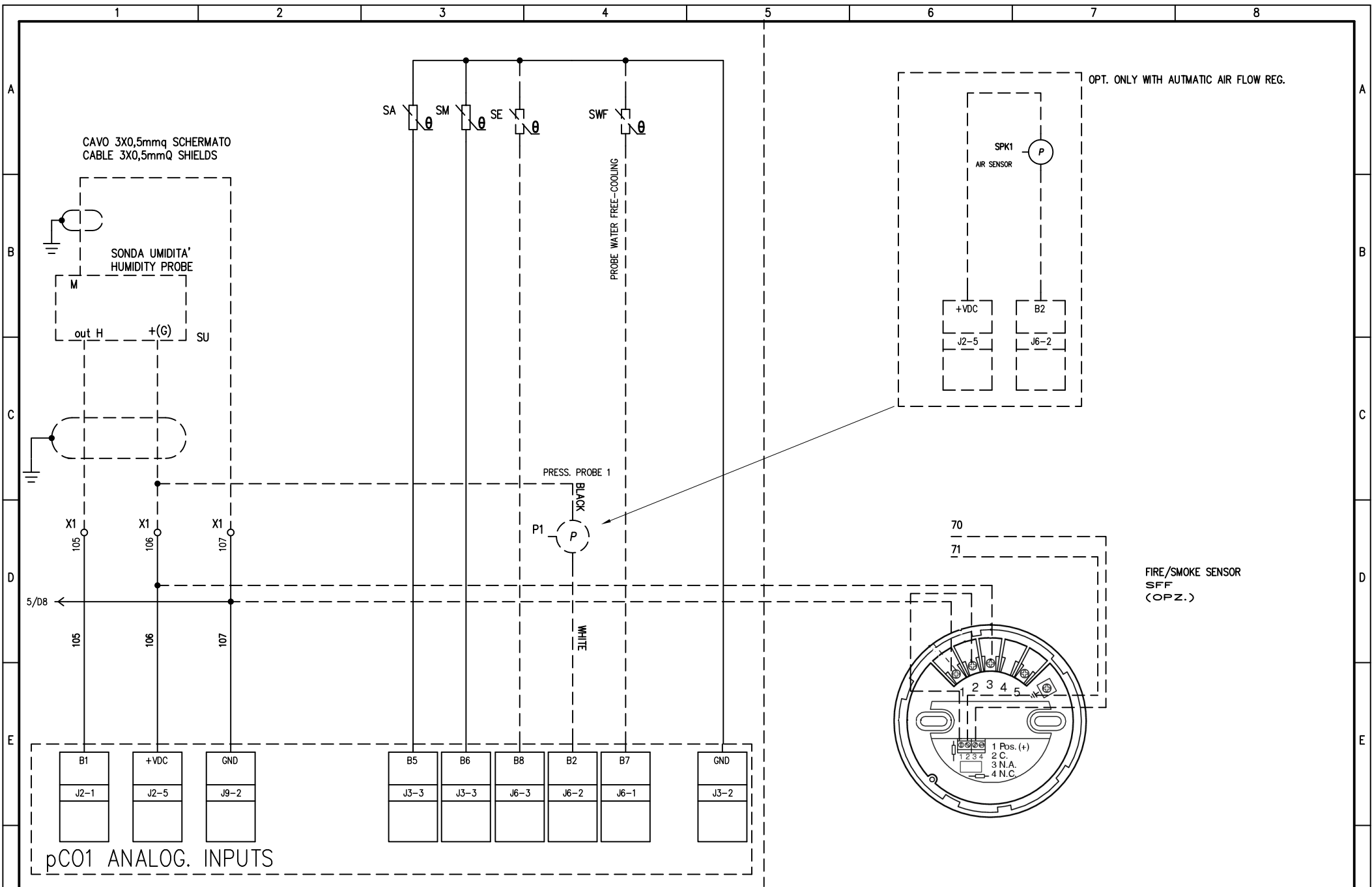


REV.	MODIFICATIONS	DATE	SIGN.	APPR.	M.M.	REPLACE	REPLACE	ORIGIN:
1		2						

DATE 09/09/2005  
DRAW. P.M.  
CHECK P.M.



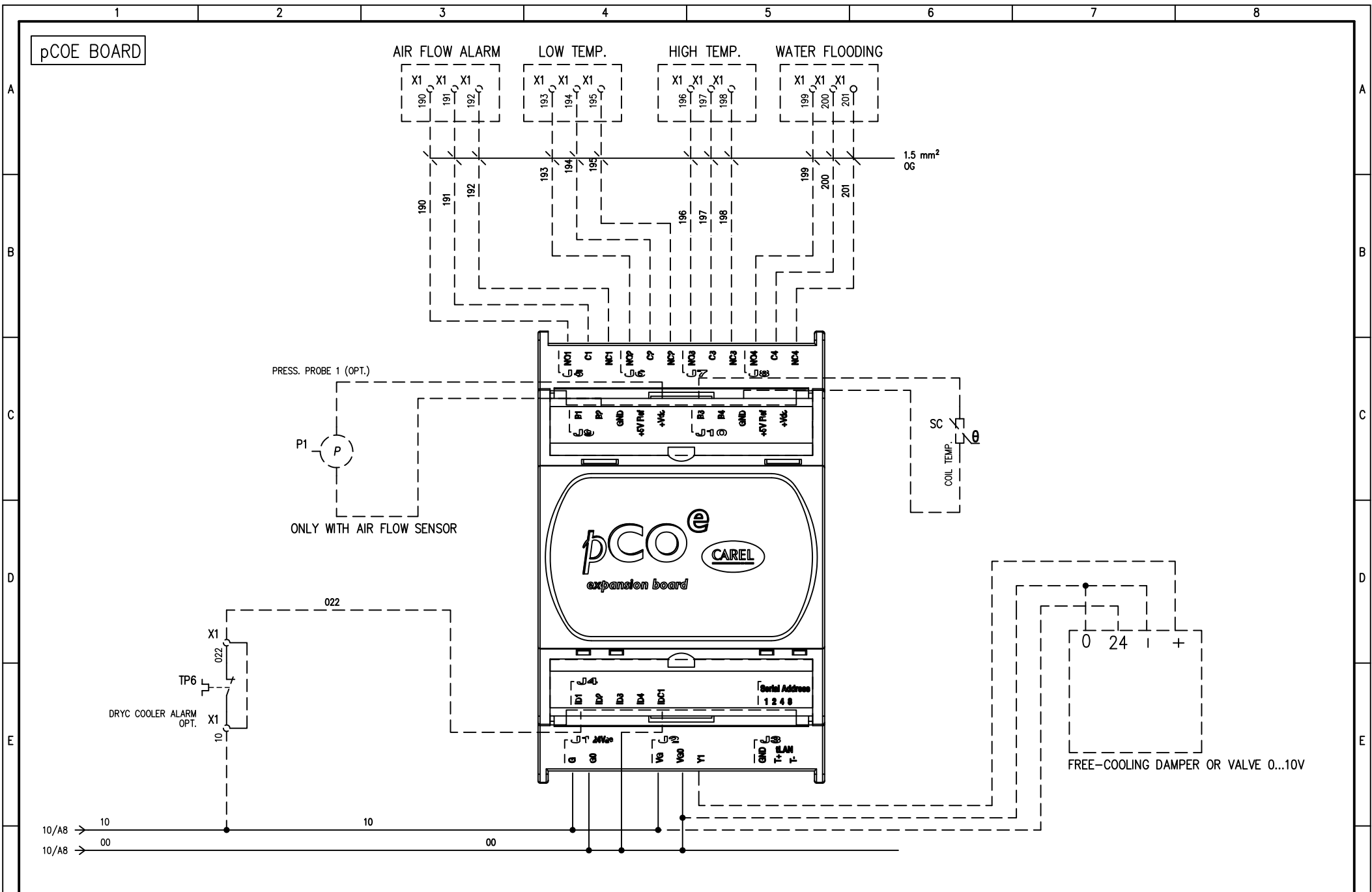




				DATE	09/09/2005							
				DRAW.	P.M.							
				CHECK	P.M.							
REV.	MODIFICATIONS	DATE	SIGN.	APPR.	M.M.	REPLACE	REPLACE	ORIGIN:			HF620C0299	SHEET 9 OF 22
1		2		3		4		5	6	7	8	CONTINUE 10



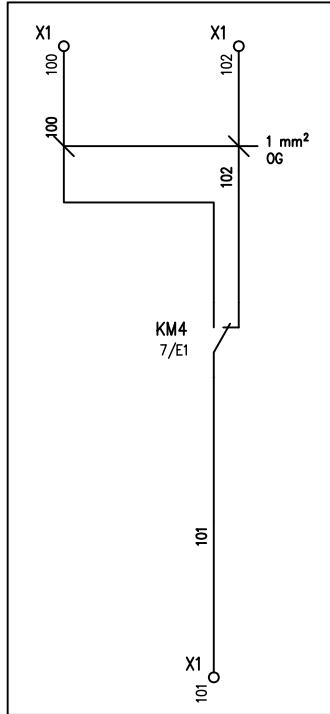




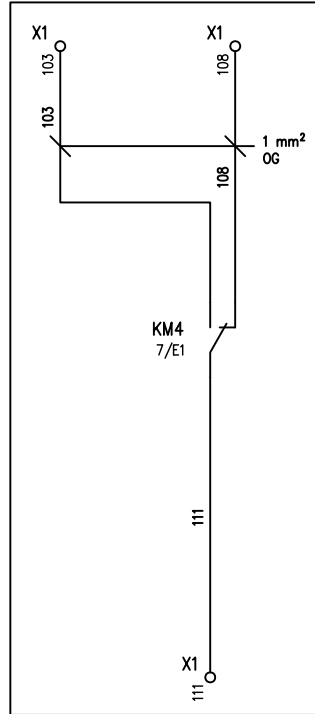
				DATE	09/09/2005		<b>LENNOX</b>							
				DRAW.	P.M.									
				CHECK	P.M.									
REV.	MODIFICATIONS	DATE	SIGN.	APPR.	M.M.	REPLACE	REPLACE	ORIGIN:			HF620C0299			
1		2		3		4		5	6	7	8	SHEET 11 OF 22 CONTINUE 12		

CONTATTI PULITI SEGNALAZIONE REMOTA  
 REMOTE SIGNAL CLEAN CONTACTS  
 CONTACTS PROPRES SIGNALISATIONS A DISTANCE  
 FREIE KONTAKTE FUER BETRIEBSMELDUNGEN  
 CONT. LIMPIOS CON SENGNALIZACIONES REMOTAS

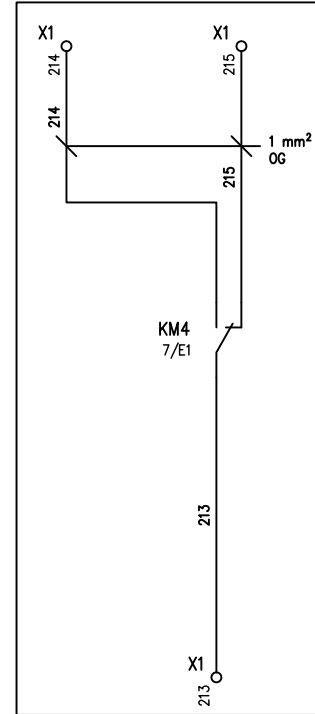
POMPA SCARICO CONDENZA  
 CONDENSATE DRAIN PUMP  
 POMPE A EAU CONDENSEUY  
 KONDENSATWASS PUMPE  
 BOMBA DESEQUE CONDEN.



EXT. DAMPER ON/OFF



EXT. PUMPS ON/OFF



ON/OFF UNIT STATUS

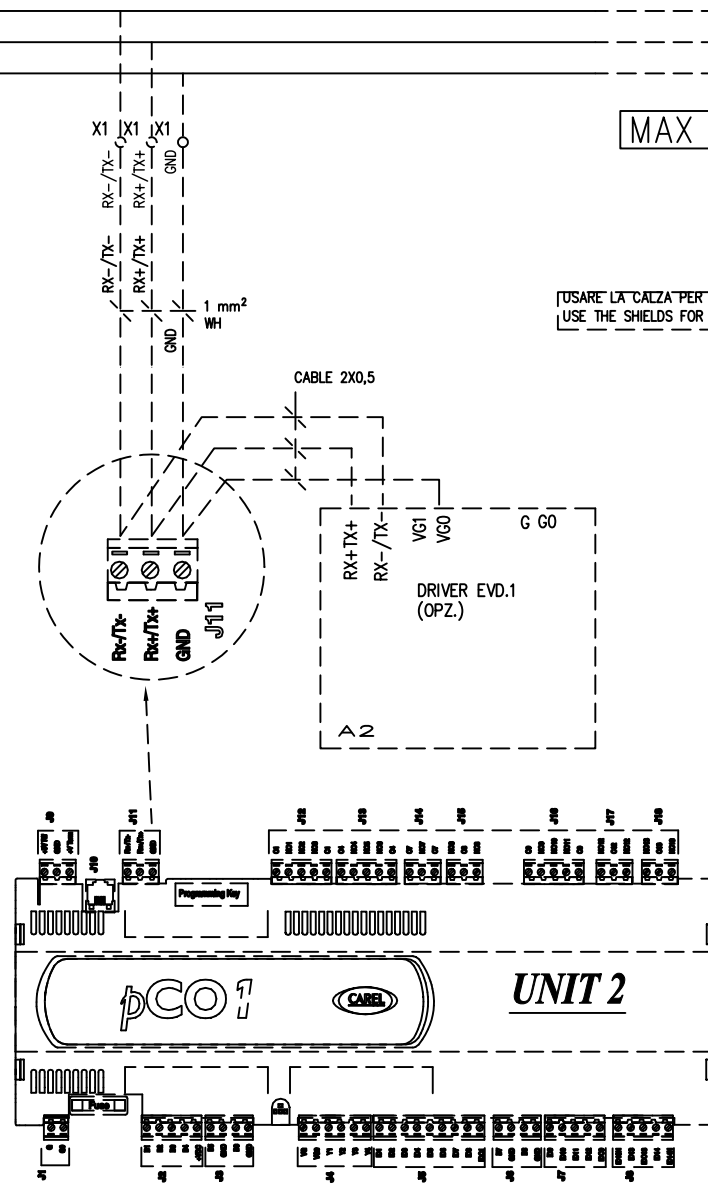
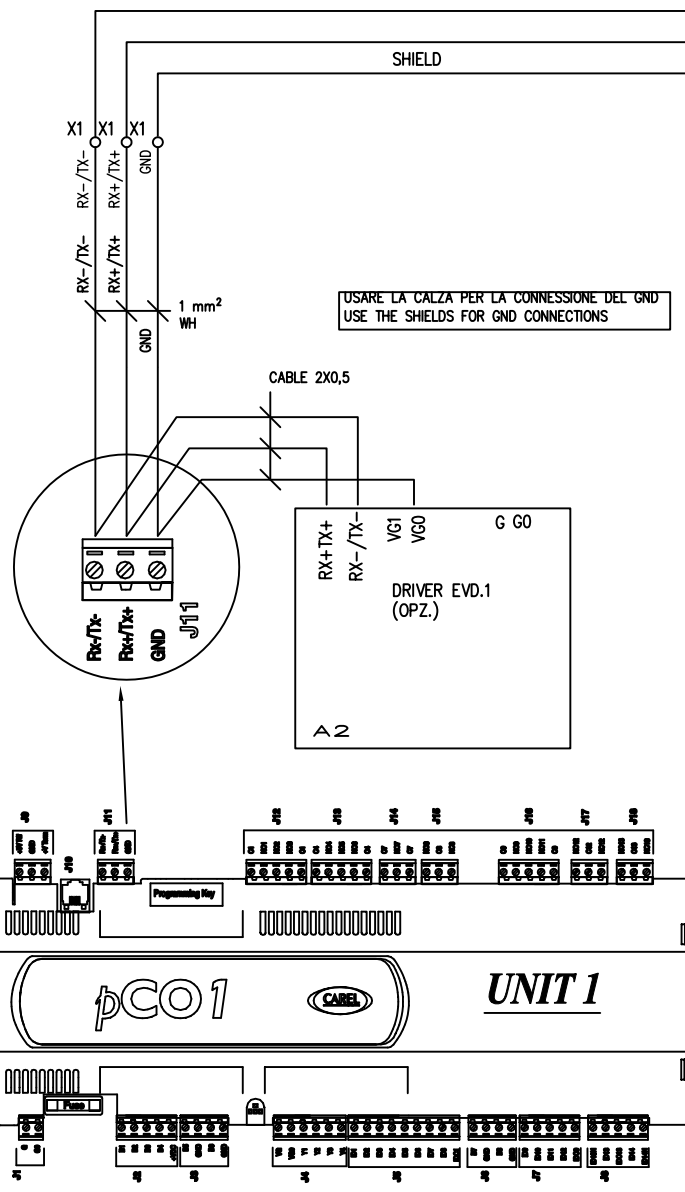
				DATE	09/09/2005			<b>LENNOX</b>				
				DRAW.	P.M.							
				CHECK	P.M.							
REV.	MODIFICATIONS	DATE	SIGN.	APPR.	M.M.	REPLACE	REPLACE	ORIGIN:			HF620C0299	SHEET 12 OF 22
1		2		3		4		5	6	7	8	CONTINUE 13

# LAN CONNECTIONS

MAX 8 UNITS

USARE LA CALZA PER LA CONNESSIONE DEL GND  
USE THE SHIELDS FOR GND CONNECTIONS

USARE LA CALZA PER LA CONNESSIONE DEL GND  
USE THE SHIELDS FOR GND CONNECTIONS



REV.	MODIFICATIONS	DATE	SIGN.	APPR.	M.M.	REPLACE	REPLACE	ORIGIN:	HF620C0299	SHEET 13 OF 22
1		2		3		4		5		CONTINUE 14







HUMID. CONNECTOR

C1

Pin	Filo	Posizione
1	49	5/C6
2	50	5/C6
3	51	5/C6
4	52	5/C6

C2

Pin	Filo	Posizione
1	94	7/D4
2	00	7/E4
3	93	7/D7
4	00	7/E7

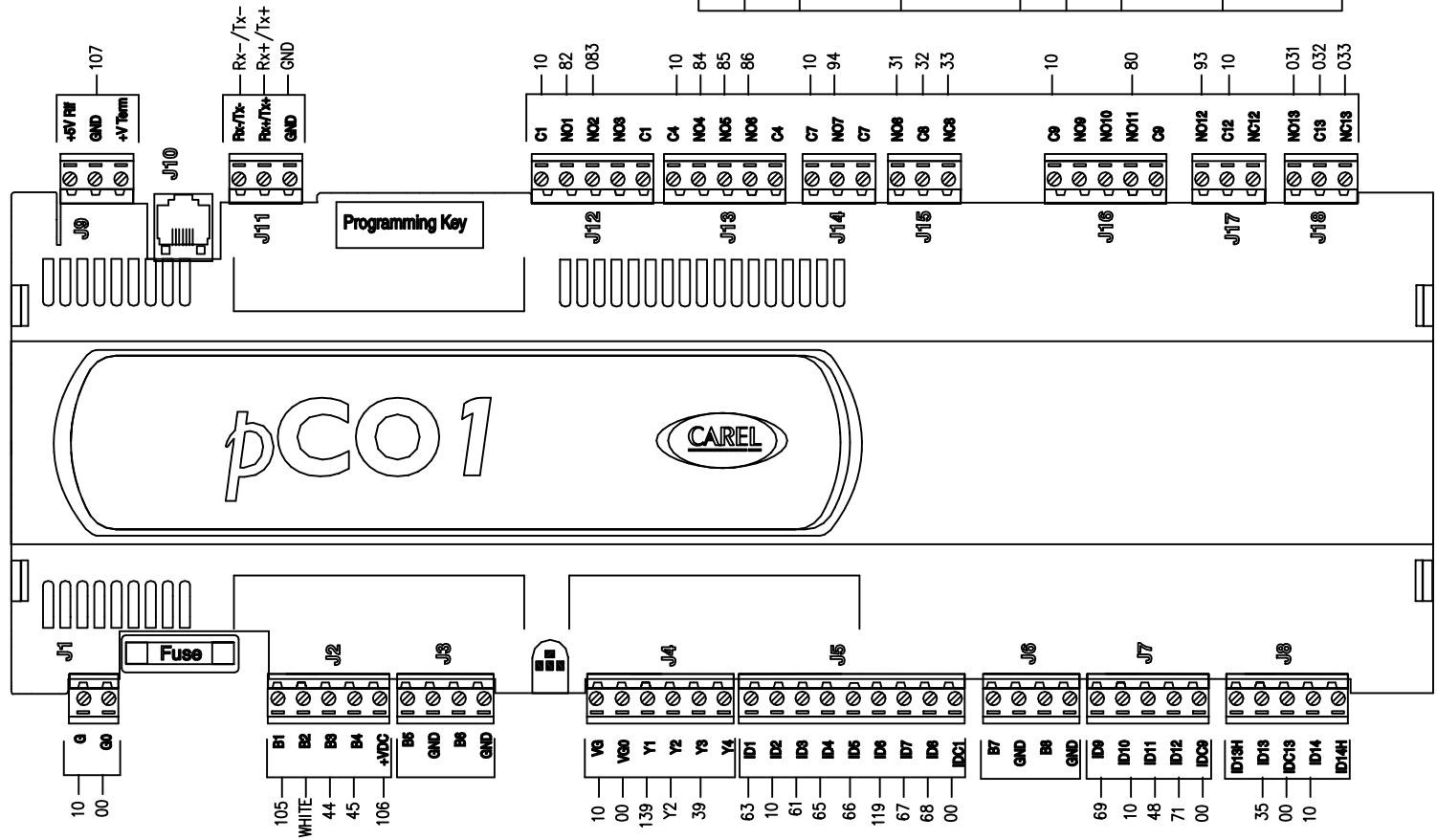
C3

Pin	Filo	Posizione
1	42	4/E1
2	54	4/E2
3	26	4/E2
4		4/E2

LAYOUT SCHEDA  
ELECTRONIC BOARD LAYOUT

CONNETTORI PHOENIX A SPINA COMBICON CON PASSO 5.08 mm. COLORE VERDE TIPO MSTB 2,5 :

SIG.	POLI	TIPO	CODICE	SIG.	POLI	TIPO	CODICE
J1	2	2,5/2-ST	17 57 01 9	J11	3	2,5/3-ST	17 57 02 2
J2	5	2,5/5-ST	17 57 04 8	J12	5	2,5/5-ST	17 57 04 8
J3	4	2,5/4-ST	17 57 03 5	J13	5	2,5/5-ST	17 57 04*8
J4	6	2,5/6-ST	17 57 05 1	J14	3	2,5/3-ST	17 57 02 2
J5	9	2,5/9-ST	17 57 08 0	J15	3	2,5/3-ST	17 57 02 2
J6	4	2,5/4-ST	17 57 03 5	J16	5	2,5/5-ST	17 57 04 8
J7	5	2,5/5-ST	17 57 04 8	J17	3	2,5/3-ST	17 57 02 2
J8	5	2,5/5-ST	17 57 04 8	J18	3	2,5/3-ST	17 57 02 2
J9	3	2,5/3-ST	17 57 02 2				PCDUMID





LAYOUT 201...261

F2=USARE MORSETTI PORTAFUBILI PHOENIX UK5-HESI INTERBLOCATI

CAVO NPI 4X2,5mmq L=1000mm M1

CAVO NPI 2X1mmq L=1000mm TP3

CAVO NPI 2X1mmq L=1000mm TP4

A

B

C

D

E

F

A

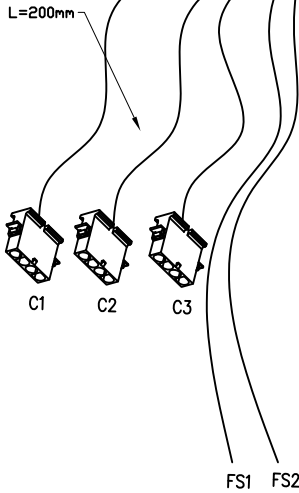
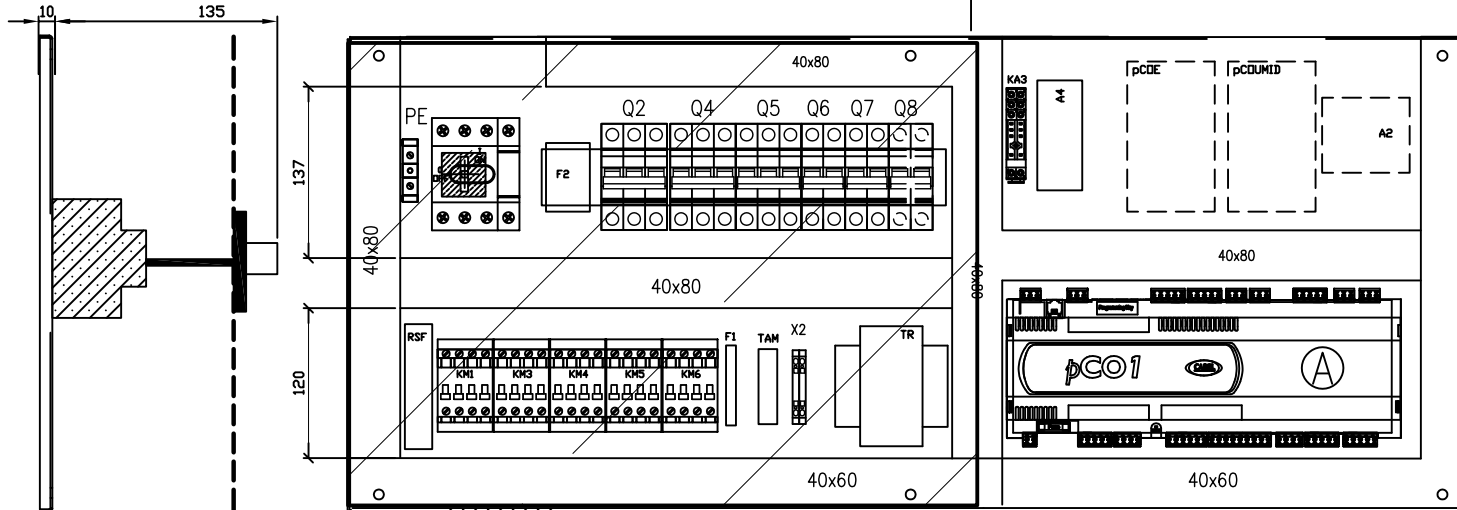
B

C

D

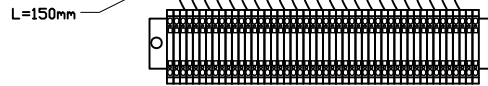
E

F



PIASTRA DI FONDO HF17001071

FORNIRE CON GUIDA OMEGA DI OPPORTUNA LUNGHEZZA CON FORI DI FISSAGGIO



CAVO NPI 3X2,5mmq L=1500mm K1 FASTON ROSSI

CAVO NPI 2X0,5mmq L=1500mm K1 FASTON ROSSI

CAVO NPI L=1500mm C1 OCCHIELLI D.6

CAVO NPI 2X1mmq L=1700mm AP1 FASTON ROSSI

CAVO NPI 2X1mmq L=1800mm Y3 PUNTALINI

CAVO NPI 3X1,5mmq L=1500mm RC1 GIUNTI

CAVO NPI 3X1,5mmq L=3000mm Y1 PUNTALINI

Ⓐ ALZARE SCHEDE CON CAVALLOTTO H=200mm

DATE 09/09/2005

DRAW. P.M.

CHECK P.M.



REV. MODIFICATIONS

DATE SIGN.

APPR. M.M.

REPLACE

REPLACE

ORIGIN:

HF620C0299

SHEET 16 OF 22

CONTINUE 17

1

2

3

4

5

6

7

8

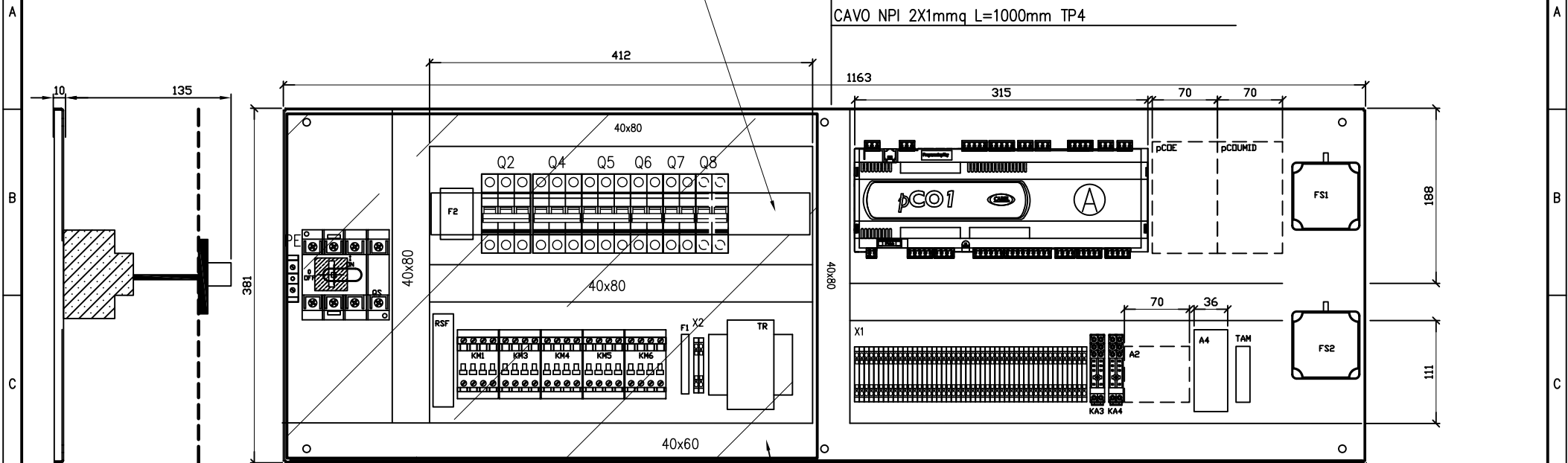
LAYOUT 271...401

COPRIRE CON COPRIFORDO

CAVO NPI 4X2,5mmq L=1000mm M1

CAVO NPI 2X1mmq L=1000mm TP3

CAVO NPI 2X1mmq L=1000mm TP4



PIASTRA DI FONDO HF17000968

CAVO NPI 3X2,5mmq L=1500mm K1 FASTON ROSSI

CAVO NPI 2X0,5mmq L=1500mm K1 FASTON ROSSI

(A) ALZARE SCHEDE CON CAVALLOTTO H=200mm

CAVO NPI L=1500mm C1 OCCHIELLI D.6

CAVO NPI 2X1mmq L=1700mm AP1 FASTON ROSSI

CAVO NPI 2X1mmq L=1800mm Y3 PUNTALINI

CAVO NPI 3X1,5mmq L=1500mm RC1 GIUNTI

CAVO NPI 3X1,5mmq L=3000mm Y1 PUNTALINI

F2=USARE MORSETTI PORTAFUBILI PHOENIX UK5-HESI INTERBLOCATI

				DATE 09/09/2005									
				DRAW. P.M.									
				CHECK P.M.									
REV.	MODIFICATIONS	DATE	SIGN.	APPR.	M.M.	REPLACE	REPLACE	ORIGIN:			HF620C0299		SHEET 17 OF 22
1		2		3		4		5	6	7	8	CONTINUE	18









1	2		3		4	5		6		7		8	
271...401	Ref-mark	Function		Technical data		Item code		Description			Amount	M.U.	Position
	M1/M2	EVAP. FANS									1		3/E05
	Q2	COMPRESSOR		SIEMENS		5SY6 332-7		INT. AUT. 3P C32 6KA			1	PCE	3/B06
	Q4	HUMIDIFIER		SIEMENS		5SY6 316-7		INT. AUT. 3P C16 6KA			1	PCE	3/B07
	Q5	FANS		SIEMENS		5SY6 320-8		INT. AUT. 3P D20 6KA			1	PCE	3/B07
	Q6	E. HEATERS		SIEMENS		5SY6 340-7		INT. AUT. 3P C40 6KA			1	PCE	3/B07
	Q7	AUX		SIEMENS		5SY6 204-7		INT. AUT. 2P C4 6KA			1	PCE	3/B07
	Q8	COND		SIEMENS		5SY6 216-7		INT. AUT. 2P C26 6KA			1	PCE	3/B07
	QS			4X125/4X45 "F"		OT125E4/OT45E4 "F"					1		3/A01
	R1	E. HEATING									1		3/E04
	RSF	PHASE SEQUENCE									1		3/C02
	SA	ROOM PROBE									1		6/B05
	TR2			150VA				CON FUS. A BORDO			1		3/C07
REV.		MODIFICATIONS		DATE		SIGN.		APPR.		M.M.		REPLACE	
				09/09/2005								REPLACE	
				DATE		SIGN.		APPR.		M.M.		REPLACE	
												REPLACE	
				DATE		SIGN.		APPR.		M.M.		REPLACE	
												REPLACE	
				DATE		SIGN.		APPR.		M.M.		REPLACE	
												REPLACE	
				DATE		SIGN.		APPR.		M.M.		REPLACE	
												REPLACE	
				DATE		SIGN.		APPR.		M.M.		REPLACE	
												REPLACE	
				DATE		SIGN.		APPR.		M.M.		REPLACE	
												REPLACE	
				DATE		SIGN.		APPR.		M.M.		REPLACE	
												REPLACE	
				DATE		SIGN.		APPR.		M.M.		REPLACE	
												REPLACE	
				DATE		SIGN.		APPR.		M.M.		REPLACE	
												REPLACE	
				DATE		SIGN.		APPR.		M.M.		REPLACE	
												REPLACE	
				DATE		SIGN.		APPR.		M.M.		REPLACE	
												REPLACE	
				DATE		SIGN.		APPR.		M.M.		REPLACE	
												REPLACE	
				DATE		SIGN.		APPR.		M.M.		REPLACE	
												REPLACE	
				DATE		SIGN.		APPR.		M.M.		REPLACE	
												REPLACE	
				DATE		SIGN.		APPR.		M.M.		REPLACE	
												REPLACE	
				DATE		SIGN.		APPR.		M.M.		REPLACE	
												REPLACE	
				DATE		SIGN.		APPR.		M.M.		REPLACE	
												REPLACE	
				DATE		SIGN.		APPR.		M.M.		REPLACE	
												REPLACE	
				DATE		SIGN.		APPR.		M.M.		REPLACE	
												REPLACE	
				DATE		SIGN.		APPR.		M.M.		REPLACE	
												REPLACE	
				DATE		SIGN.		APPR.		M.M.		REPLACE	
												REPLACE	
				DATE		SIGN.		APPR.		M.M.		REPLACE	
												REPLACE	
				DATE		SIGN.		APPR.		M.M.		REPLACE	
												REPLACE	
				DATE		SIGN.		APPR.		M.M.		REPLACE	
												REPLACE	
				DATE		SIGN.		APPR.		M.M.		REPLACE	
												REPLACE	
				DATE		SIGN.		APPR.		M.M.		REPLACE	
												REPLACE	
				DATE		SIGN.		APPR.		M.M.		REPLACE	
												REPLACE	
				DATE		SIGN.		APPR.		M.M.		REPLACE	
												REPLACE	
				DATE		SIGN.		APPR.		M.M.		REPLACE	
												REPLACE	
				DATE		SIGN.		APPR.		M.M.		REPLACE	
												REPLACE	
				DATE		SIGN.		APPR.		M.M.		REPLACE	
												REPLACE	
				DATE		SIGN.		APPR.		M.M.		REPLACE	
												REPLACE	
				DATE		SIGN.		APPR.		M.M.		REPLACE	
												REPLACE	
				DATE		SIGN.		APPR.		M.M.		REPLACE	
												REPLACE	
				DATE		SIGN.		APPR.		M.M.		REPLACE	
												REPLACE	
				DATE		SIGN.		APPR.		M.M.		REPLACE	
												REPLACE	
				DATE		SIGN.		APPR.		M.M.		REPLACE	
												REPLACE	
				DATE		SIGN.		APPR.		M.M.		REPLACE	
												REPLACE	
				DATE		SIGN.		APPR.		M.M.		REPLACE	
												REPLACE	
				DATE		SIGN.		APPR.		M.M.		REPLACE	
												REPLACE	
				DATE		SIGN.		APPR.		M.M.		REPLACE	
												REPLACE	
				DATE		SIGN.		APPR.		M.M.		REPLACE	
												REPLACE	
				DATE		SIGN.		APPR.		M.M.		REPLACE	
												REPLACE	
				DATE		SIGN.		APPR.		M.M.		REPLACE	
												REPLACE	
				DATE		SIGN.		APPR.		M.M.		REPLACE	
												REPLACE	
				DATE		SIGN.		APPR.		M.M.		REPLACE	
												REPLACE	
				DATE		SIGN.		APPR.		M.M.		REPLACE	
												REPLACE	
				DATE		SIGN.		APPR.		M.M.		REPLACE	
												REPLACE	
				DATE		SIGN.		APPR.		M.M.		REPLACE	
												REPLACE	
				DATE		SIGN.		APPR.		M.M.		REPLACE	
												REPLACE	
				DATE		SIGN.		APPR.		M.M.		REPLACE	
												REPLACE	
				DATE		SIGN.		APPR.		M.M.		REPLACE	
												REPLACE	
				DATE		SIGN.		APPR.		M.M.		REPLACE	
												REPLACE	
				DATE		SIGN.		APPR.		M.M.		REPLACE	
												REPLACE	
				DATE		SIGN.		APPR.		M.M.		REPLACE	
												REPLACE	
				DATE		SIGN.		APPR.		M.M.		REPLACE	
												REPLACE	
				DATE		SIGN.		APPR.		M.M.		REPLACE	
												REPLACE	
				DATE		SIGN.		APPR.		M.M.		REPLACE	
												REPLACE	
				DATE		SIGN.		APPR.		M.M.		REPLACE	
												REPLACE	
				DATE		SIGN.		APPR.		M.M.		REPLACE	
												REPLACE	
				DATE		SIGN.		APPR.		M.M.		REPLACE	
												REPLACE	
				DATE		SIGN.		APPR.		M.M.		REPLACE	
												REPLACE	
				DATE		SIGN.		APPR.		M.M.		REPLACE	
												REPLACE	
				DATE		SIGN.		APPR.		M.M.		REPLACE	
												REPLACE	
				DATE		SIGN.		APPR.		M.M.		REPLACE	
												REPLACE	
				DATE		SIGN.		APPR.		M.M.		REPLACE	
												REPLACE	
				DATE		SIGN.		APPR.		M.M.		REPLACE	
												REPLACE	
				DATE		SIGN.		APPR.		M.M.		REPLACE	
												REPLACE	
				DATE		SIGN.		APPR.		M.M.		REPLACE	
												REPLACE	
				DATE		SIGN.		APPR.		M.M.		REPLACE	
												REPLACE	
				DATE		SIGN.		APPR.		M.M.		REPLACE	
												REPLACE	
				DATE		SIGN.		APPR.		M.M.		REPLACE	
												REPLACE	
				DATE		SIGN.		APPR.		M.M.		REPLACE	
												REPLACE	
				DATE		SIGN.		APPR.		M.M.		REPLACE	
												REPLACE	
				DATE		SIGN.		APPR.		M.M.		REPLACE	
												REPLACE	
				DATE		SIGN.		APPR.		M.M.		REPLACE	
												REPLACE	
				DATE		SIGN							

1

2

3

4

5

6

7

8

**NOTE:**

- 1) CABLARE Q.E. COME SE FOSSE COMPLETO MA ANDRA' INSTALLATO SOLO IL MATERIALE PER VERSIONE SOLO FREDDO
- 2) PREDISPORRE CABLAGGI PER SCHEDE A1..A2..A3...A4...pCOE E TUTTA LA PARTE DELLA LAN CONNECCTION
- 3) REALIZZAREE LASTRA DI PLEXIGLASS A COPERTURA PARTE DI POTENZA (VEDI LAYOUT)
- 4) PREDISPORRE CABALGGIO PER INT. Q8

A

A

B

B

C

C

D

D

E

E

F

F

DATE	09/09/2005
DRAW.	P.M.
CHECK	P.M.



HF620C0299

SHEET 22 OF 22

REV.	MODIFICATIONS	DATE	SIGN.	APPR.	M.M.	REPLACE	REPLACE	ORIGIN:							
------	---------------	------	-------	-------	------	---------	---------	---------	--	--	--	--	--	--	--

1

2

3

4

5

6

7

8

CONTINUE