



Serie	DHCD-U-XC/R
Model	80 - 110


Drawing code	HF620C0994	Controller	PC01
--------------	------------	------------	------


Power supply	400V/3~/50Hz + N	-
Auxiliary supply	24VAC	-

Created by	N.C.1	Revision by	-	Index	-
Date	16/03/2009	On	-		

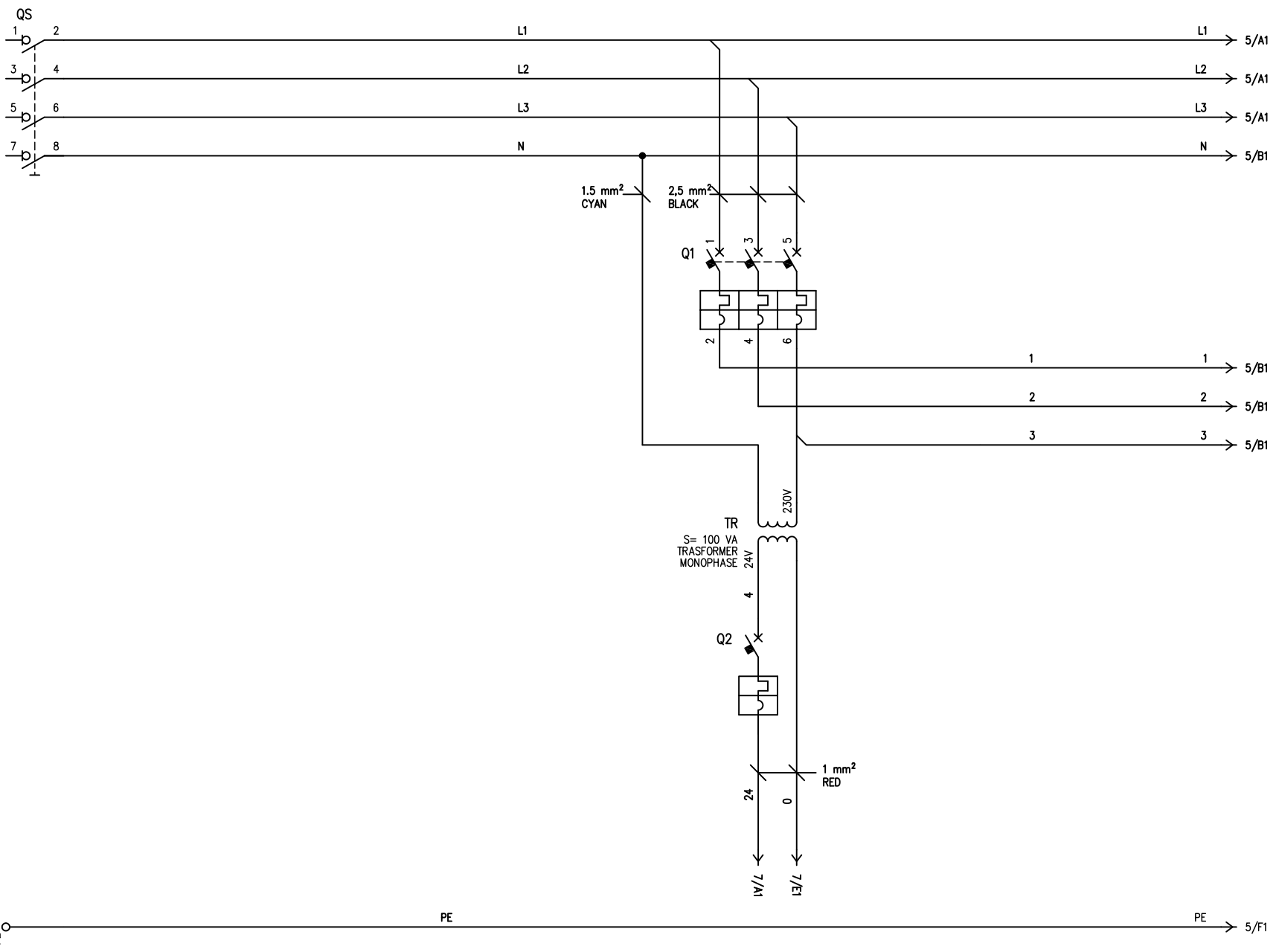
Max power (kW)	SEE TABLE ON PAGE 2-3
FLA (A)	SEE TABLE ON PAGE 2-3
RLA (A)	SEE TABLE ON PAGE 2-3

Main protection	SEE TABLE ON PAGE 2-3
-----------------	-----------------------

	1	2	3	4	5	6	7	8			
	JREF										
A	MODEL	POWER SUPPLY	MAX ABSORBED POWER (kW)	MAX ABSORBED CURENT (A)	RLA (A)	MAIN SUGGEST PROTECTION gG FUSE TYPE	MIN SUGGEST CROSS SECTION LINE (mm ²) VS MAX LENGTH (m) AIR TEMPERATURE 30°C - MULTICORE CABLE - CABLE INSIDE TUBE ON AIR				
							PVC ISULATED		EPR (G7-G10) ISULATED		
							CABLE WORKING TEMPERATURE 70°C	MAX LENGTH VOLTAGE DROP<4%	CABLE WORKING TEMPERATURE 90°C	MAX LENGTH VOLTAGE DROP<4%	
	080	LINE	5,1	13,2	/	16	2,5	95	1,5	57	
	110	LINE	5,1	13,2	/	16	2,5	95	1,5	57	
B											
C											
D											
E											
F											
				DATE	16/03/2009			HF620C0994		SHEET 2 OF 28	
				DRAW.	N.C.1					CONTINUE	3
				CHECK	F.F.1						
REV.	MODIFICATIONS	DATE	SIGN.	APPR.	M.M.						
	1	2	3	4	5	6	7	8			

	1	2	3	4	5	6	7	8			
	JREF-R										
A	MODEL	POWER SUPPLY	MAX ABSORBED POWER (kW)	MAX ABSORBED CURENT (A)	RLA (A)	MAIN SUGGEST PROTECTION gG FUSE TYPE	MIN SUGGEST CROSS SECTION LINE (mm ²) VS MAX LENGTH (m) AIR TEMPERATURE 30°C - MULTICORE CABLE - CABLE INSIDE TUBE ON AIR				
							PVC ISULATED		EPR (G7-G10) ISULATED		
							CABLE WORKING TEMPERATURE 70°C	MAX LENGTH VOLTAGE DROP<4%	CABLE WORKING TEMPERATURE 90°C	MAX LENGTH VOLTAGE DROP<4%	
	080	LINE	5,8	11,9	/	16	2,5	105	1,5	63	
	110	LINE	5,8	11,9	/	16	2,5	105	1,5	63	
B											
C											
D											
E											
F				DATE	16/03/2009			HF620C0994		SHEET	3 OF 28
				DRAW.	N.C.1						
				CHECK	F.F.1						
	REV.	MODIFICATIONS	DATE	SIGN.	APPR.					M.M.	CONTINUE
	1	2	3	4	5	6	7	8			

POWER SUPPLY
400/3~ /50Hz + N



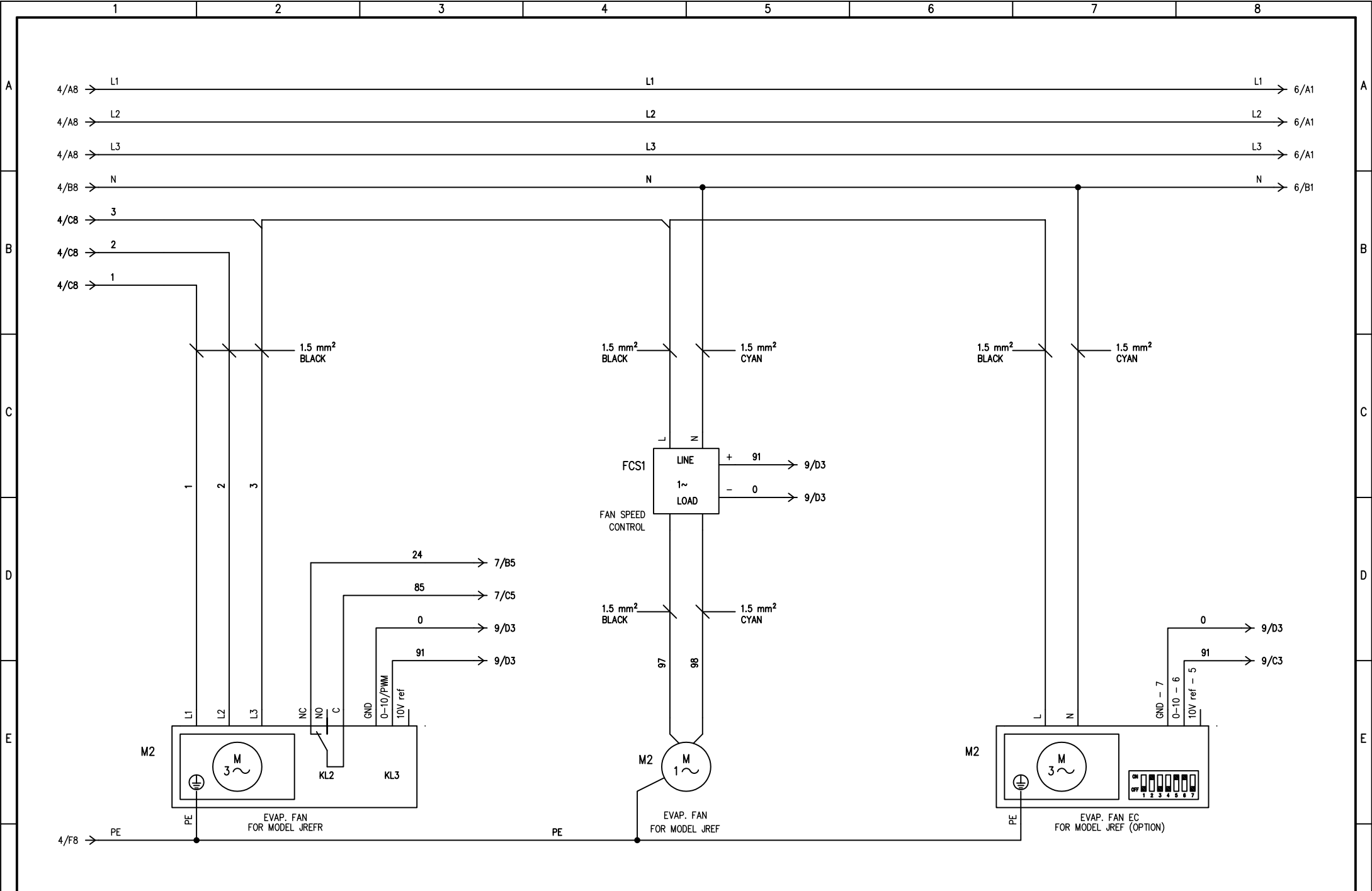
DATE	16/03/2009
DRAW.	N.C.1
CHECK	F.F.1
APPR.	M.M.



HF620C0994

SHEET	4 OF 28
CONTINUE	5

REV.	MODIFICATIONS	DATE	SIGN.	APPR.

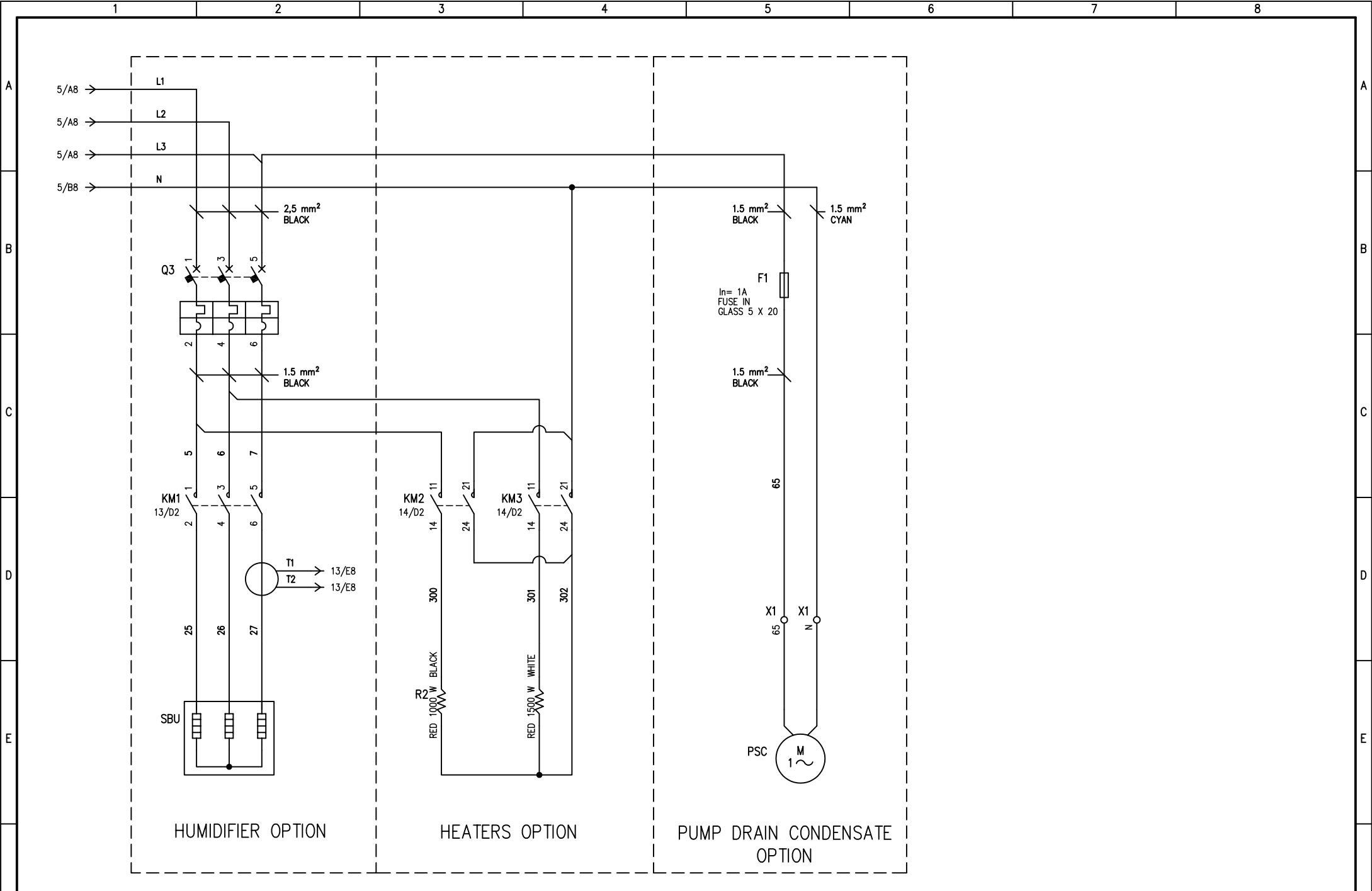


REV.	MODIFICATIONS	DATE	SIGN.	APPR.	M.M.

DATE 16/03/2009
 DRAW. I.N.C.1
 CHECK F.F.1
 APPR. M.M.



HF620C0994

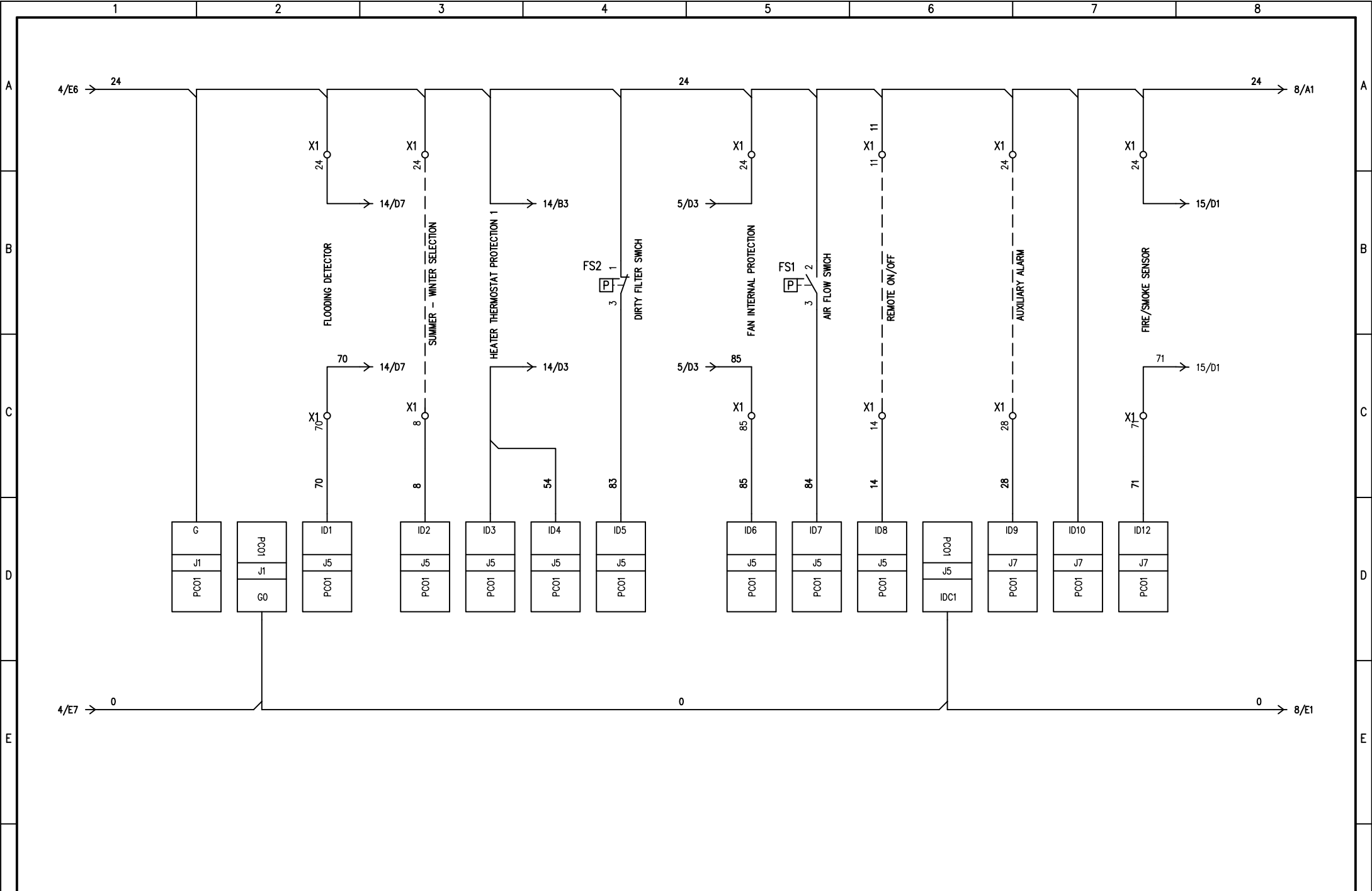


REV.	MODIFICATIONS	DATE	SIGN.	APPR.	M.M.

DATE 16/03/2009
 DRAW. N.C.1
 CHECK F.F.1
 APPR. M.M.



HF620C0994

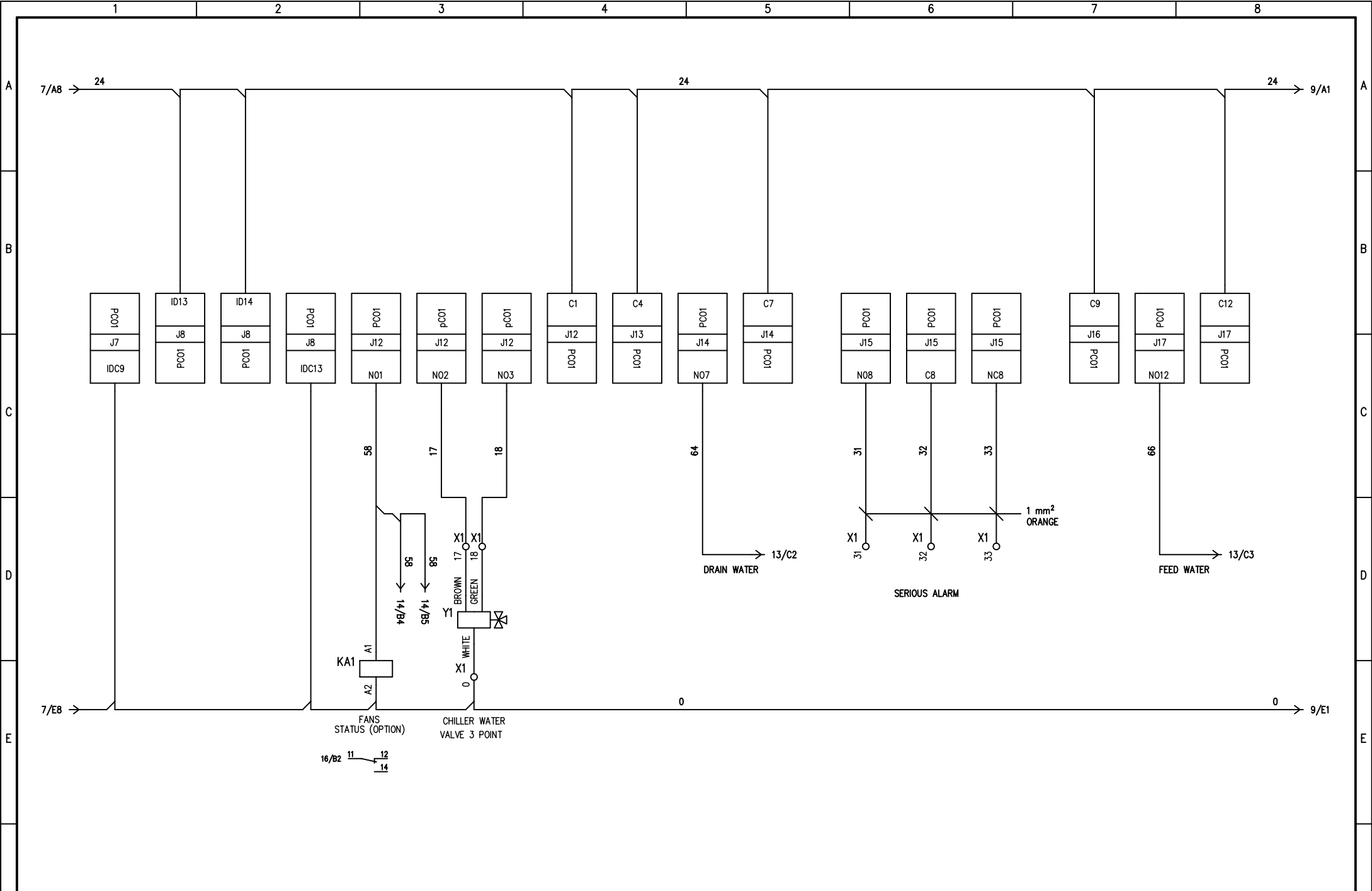


REV.	MODIFICATIONS	DATE	SIGN.	APPR.	M.M.

DATE 16/03/2009
 DRAW. N.C.1
 CHECK F.F.1
 APPR. M.M.



HF620C0994

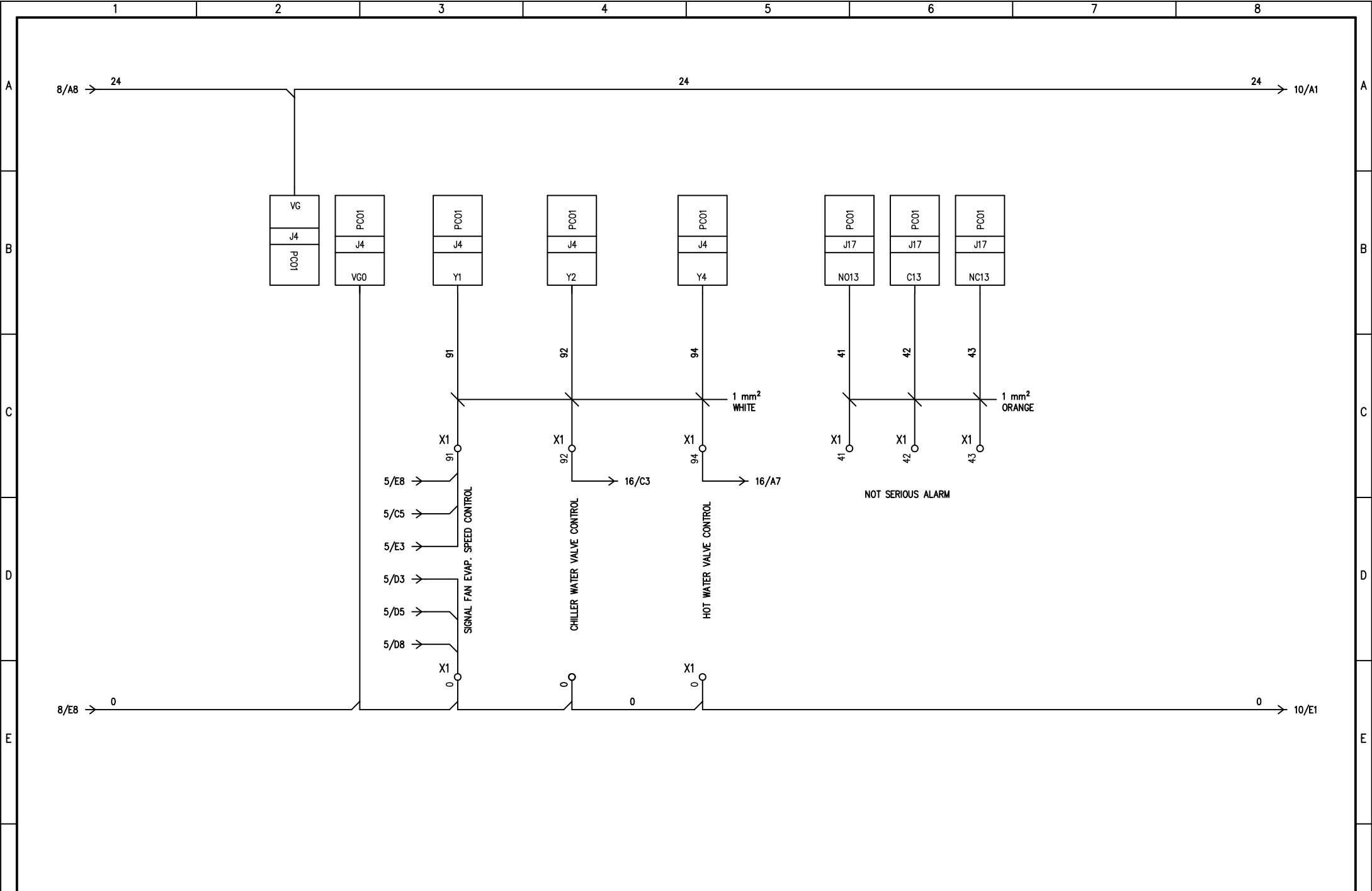


REV.	MODIFICATIONS	DATE	SIGN.	APPR.	M.M.

DATE 16/03/2009
 DRAW. N.C.1
 CHECK F.F.1
 APPR. M.M.



HF620C0994

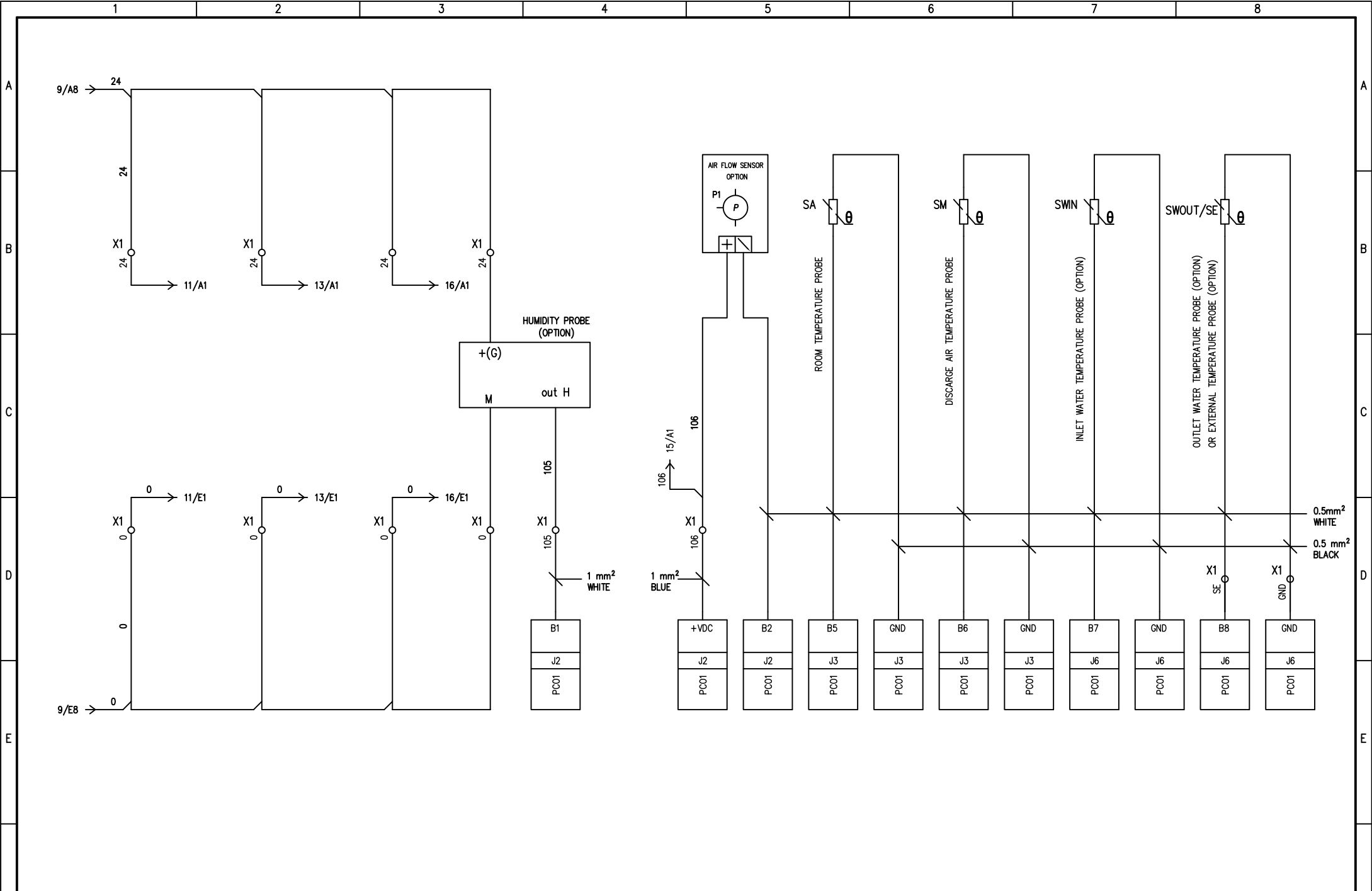


REV.	MODIFICATIONS	DATE	SIGN.	APPR.	M.M.

DATE 16/03/2009
 DRAW. N.C.1
 CHECK F.F.1
 APPR. M.M.



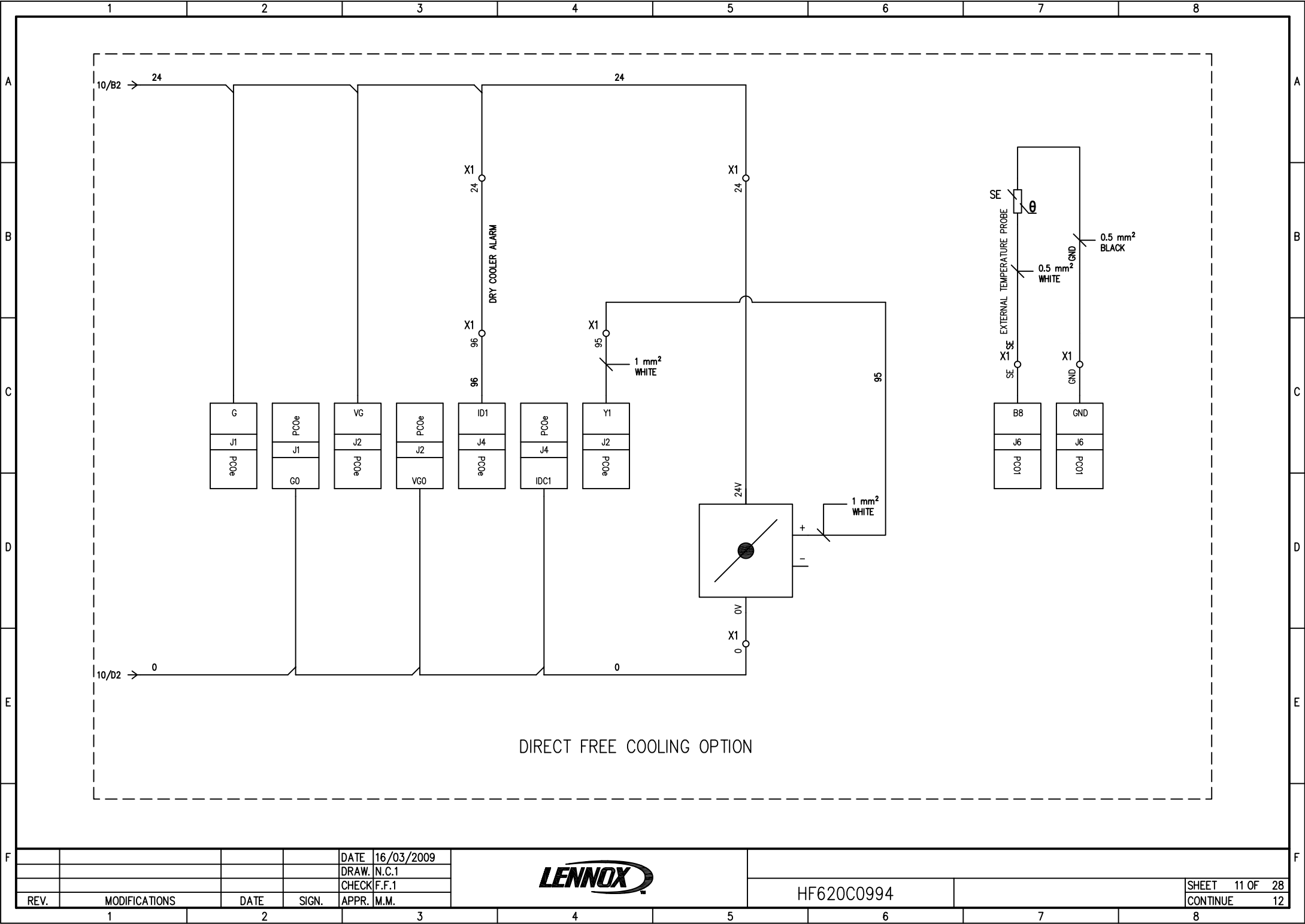
HF620C0994



DATE	16/03/2009
DRAW.	N.C.1
CHECK	F.F.1
REV.	MODIFICATIONS
DATE	SIGN.
APPR.	M.M.



HF620C0994



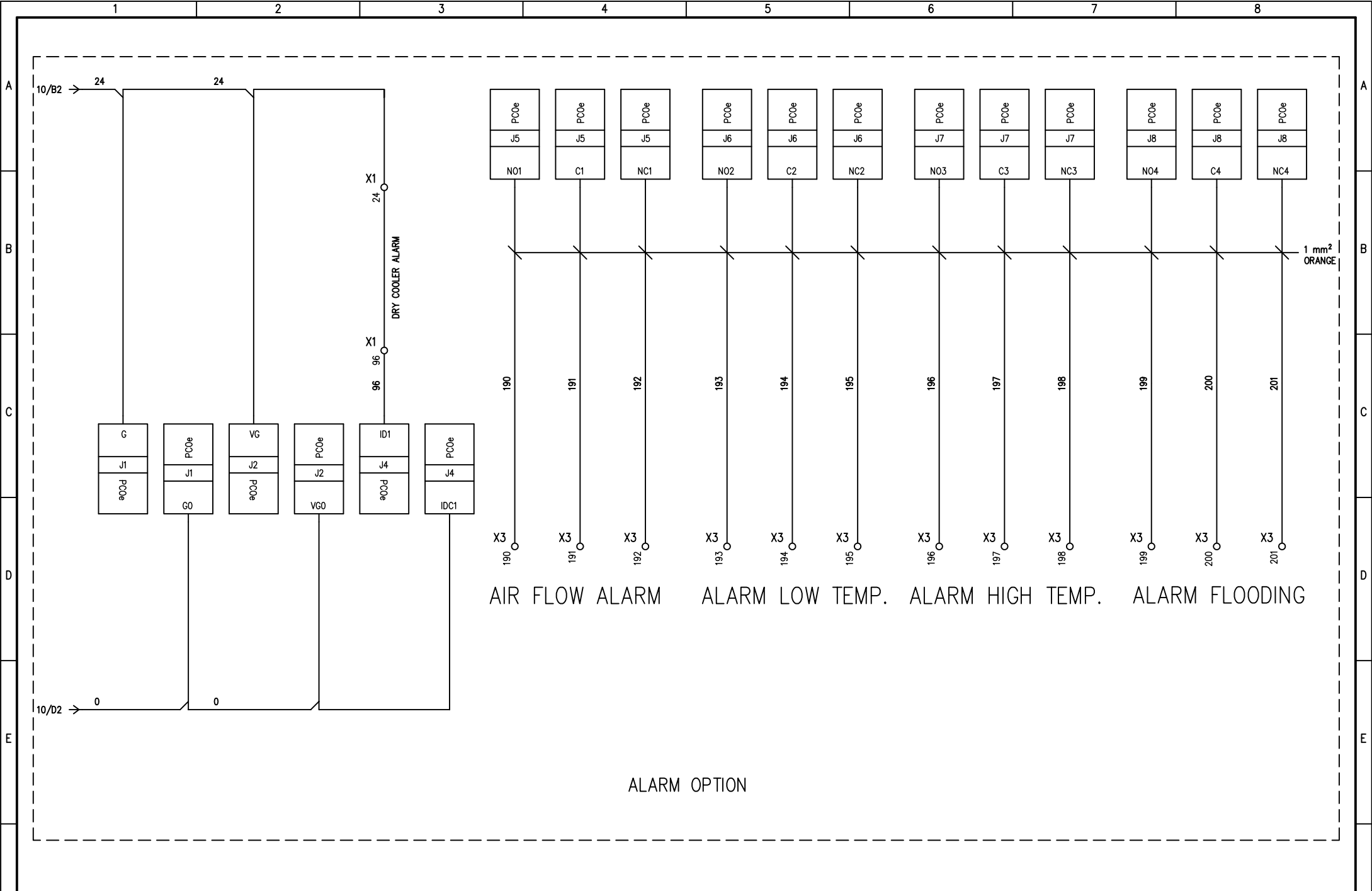
DIRECT FREE COOLING OPTION

REV.	MODIFICATIONS	DATE	SIGN.	APPR.	M.M.

DATE 16/03/2009
 DRAW. N.C.1
 CHECK F.F.1
 APPR. M.M.



HF620C0994

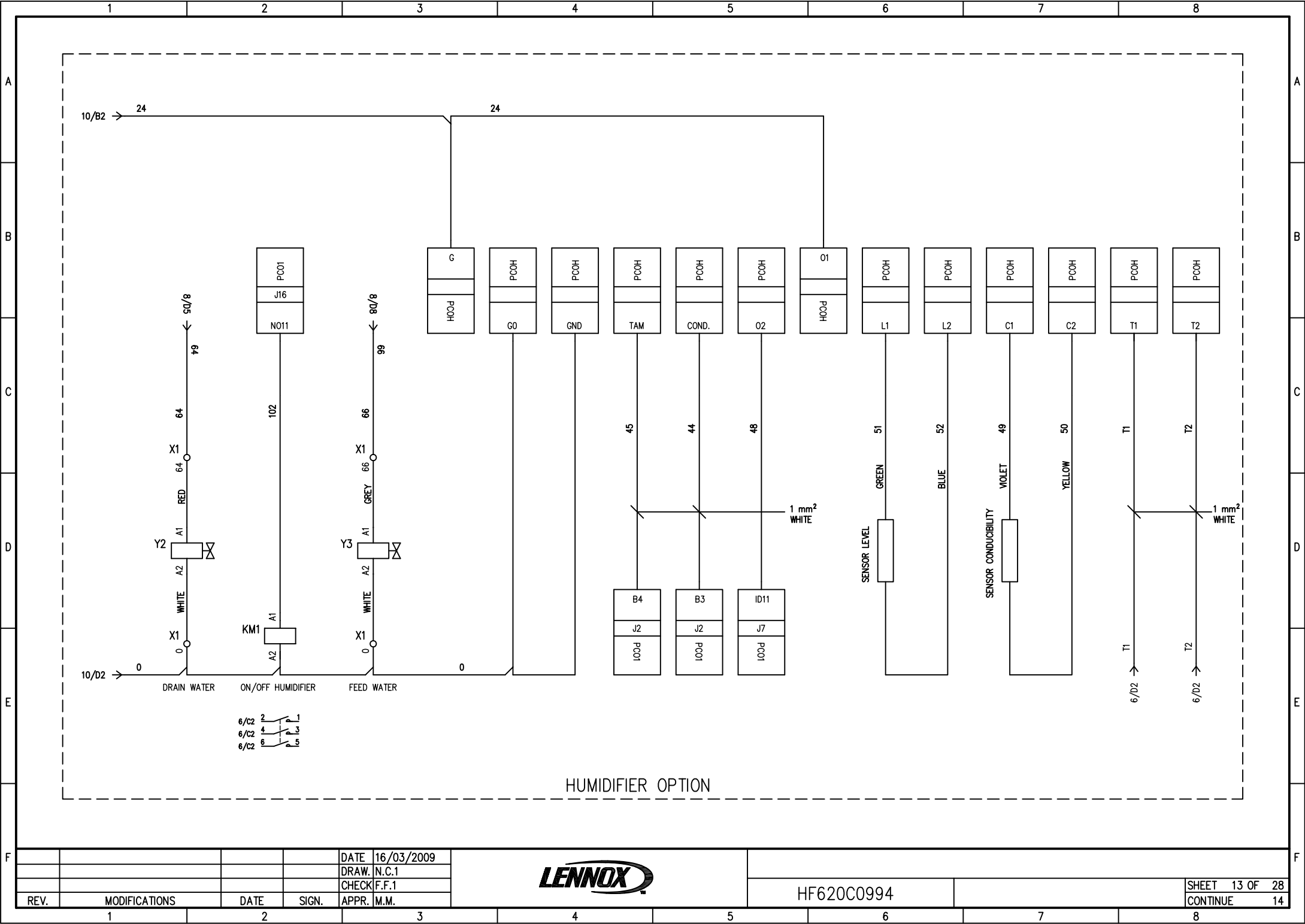


REV.	MODIFICATIONS	DATE	SIGN.	APPR.	M.M.
1					
2					

DATE 16/03/2009
 DRAW. N.C.1
 CHECK F.F.1
 APPR. M.M.



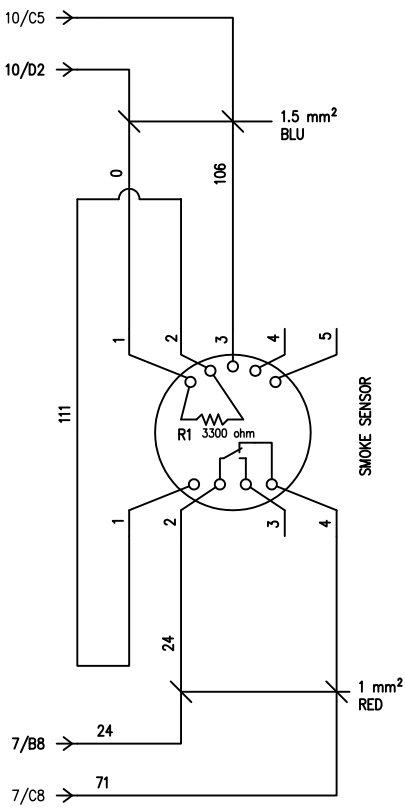
HF620C0994



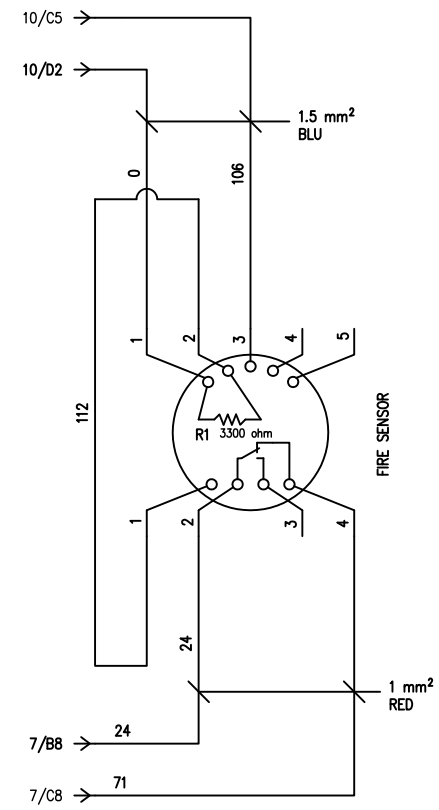
DATE	16/03/2009
DRAW.	N.C.1
CHECK	F.F.1
REV.	MODIFICATIONS
DATE	SIGN.
APPR.	M.M.



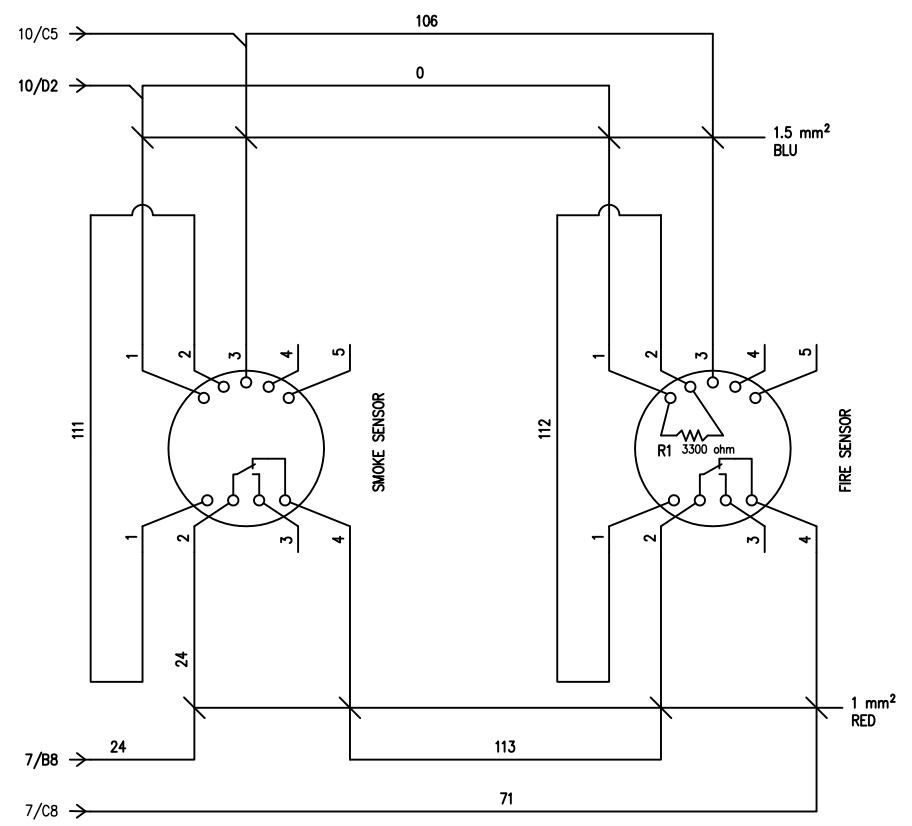
HF620C0994



SMOKE SENSOR OPTION



FIRE SENSOR OPTION

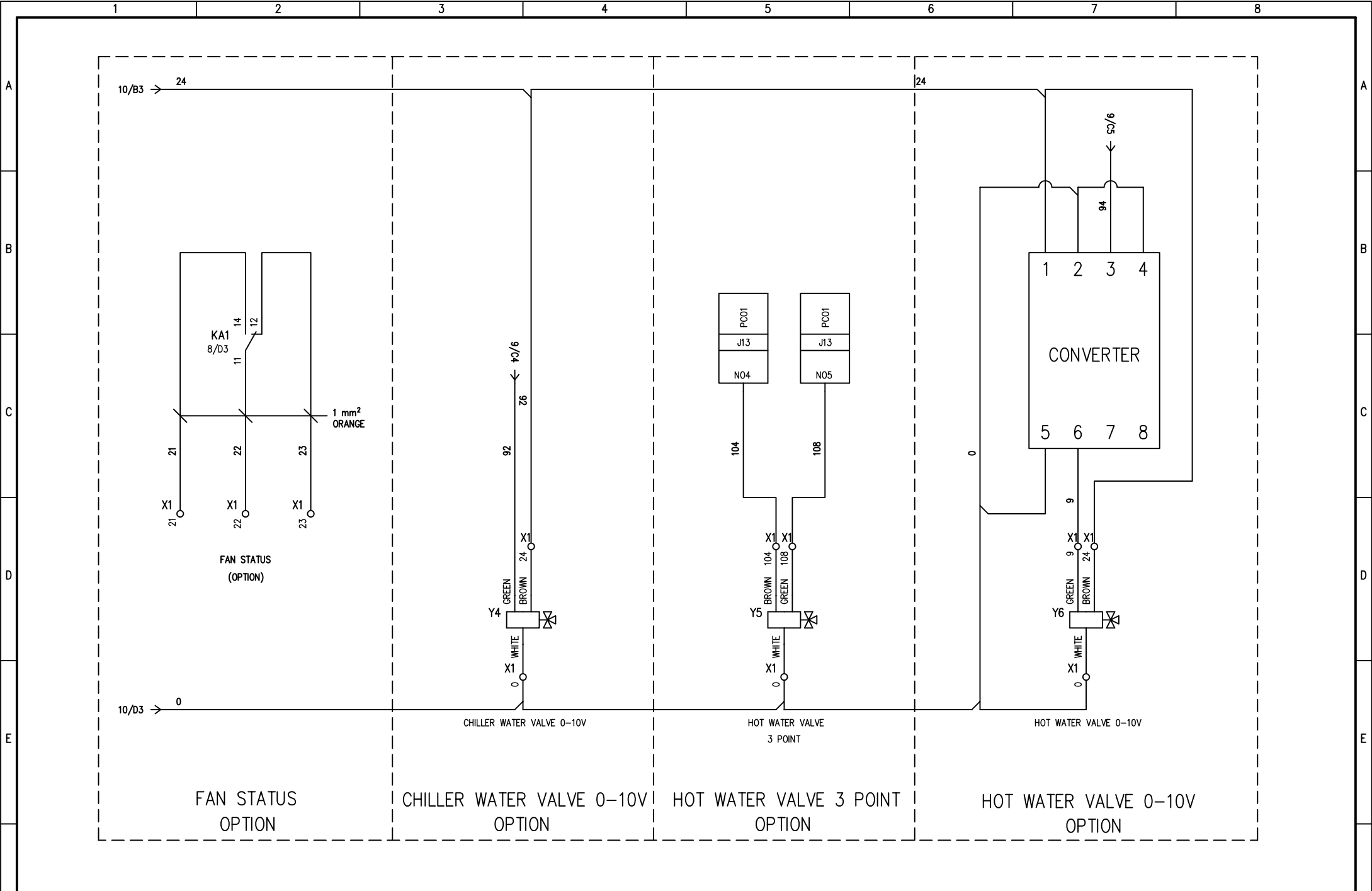


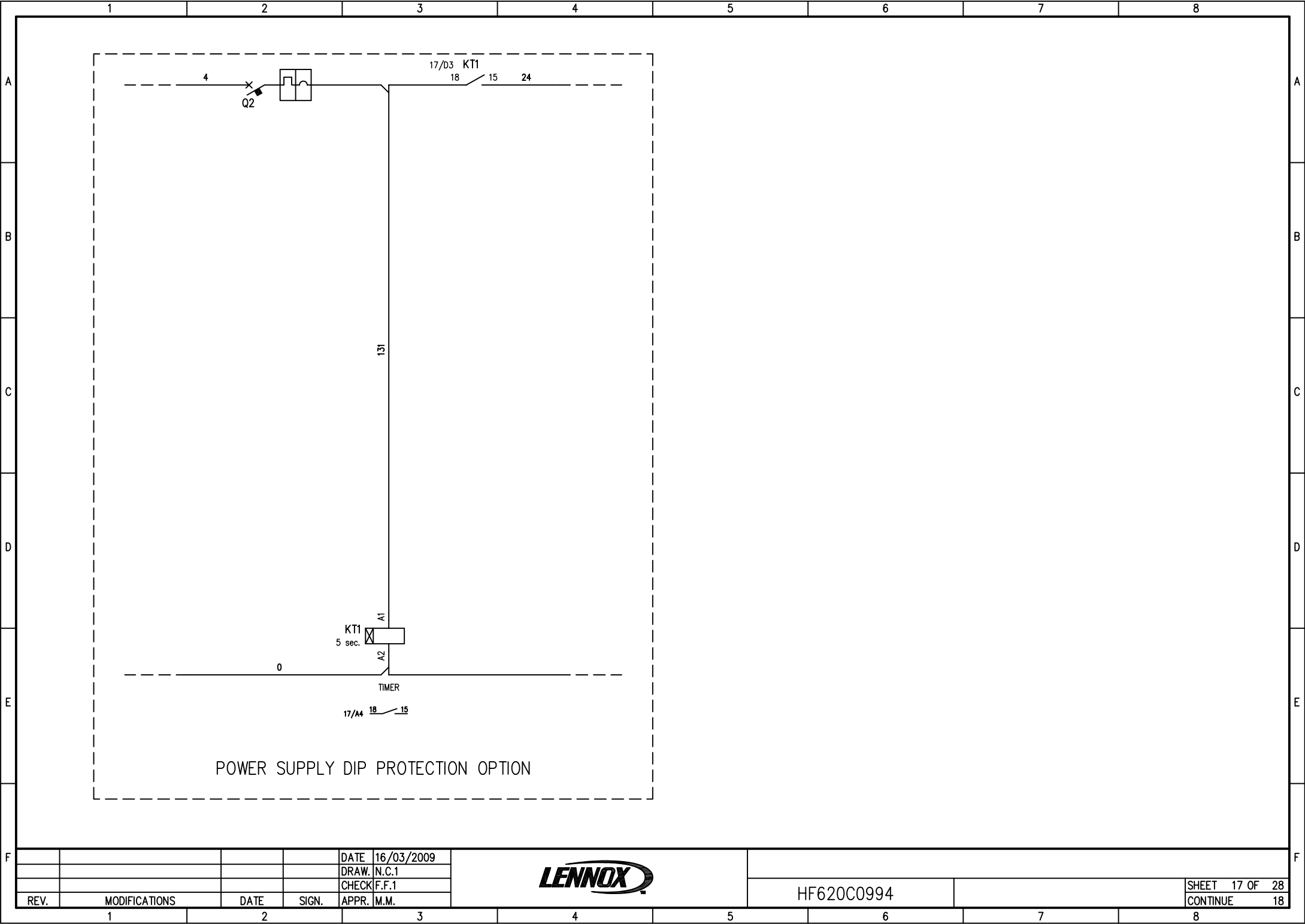
SMOKE/FIRE SENSOR OPTION

DATE	16/03/2009
DRAW.	N.C.1
CHECK	F.F.1
REV.	MODIFICATIONS
DATE	SIGN.
APPR.	M.M.



HF620C0994





POWER SUPPLY DIP PROTECTION OPTION

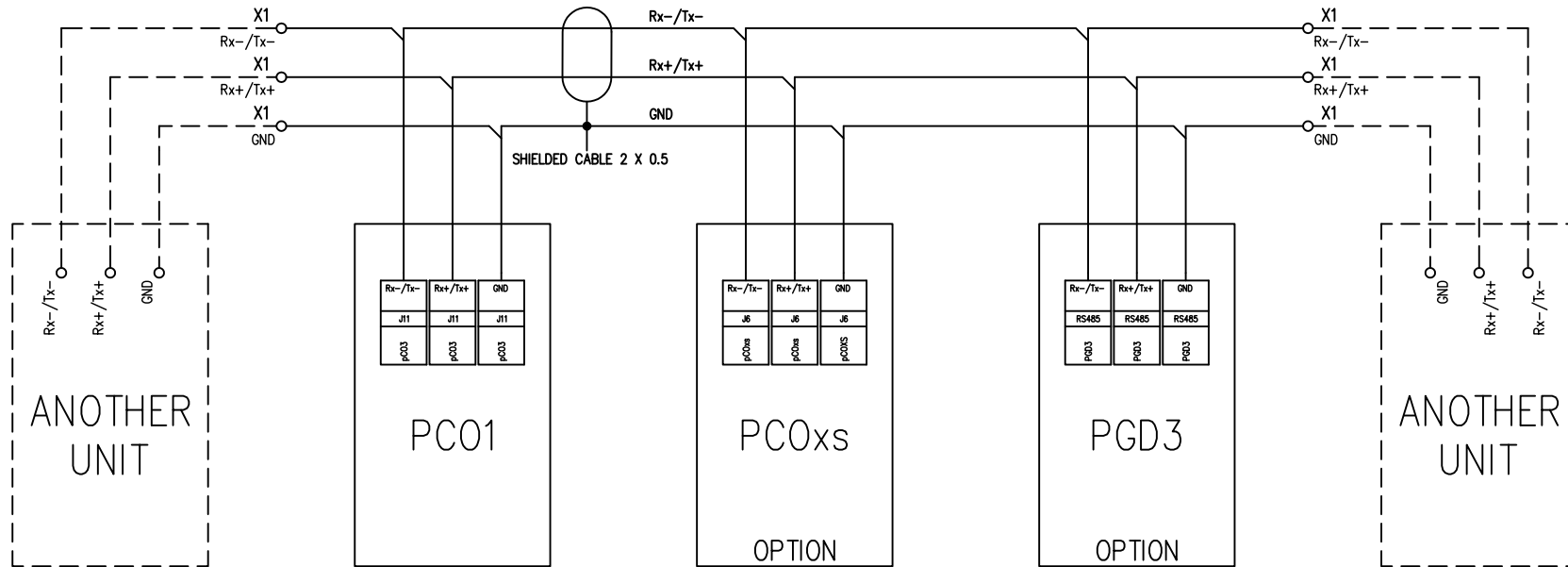
REV.	MODIFICATIONS	DATE	SIGN.	APPR.	M.M.

DATE	16/03/2009
DRAW.	N.C.1
CHECK	F.F.1
APPR.	M.M.



HF620C0994

pLAN CONNECTION

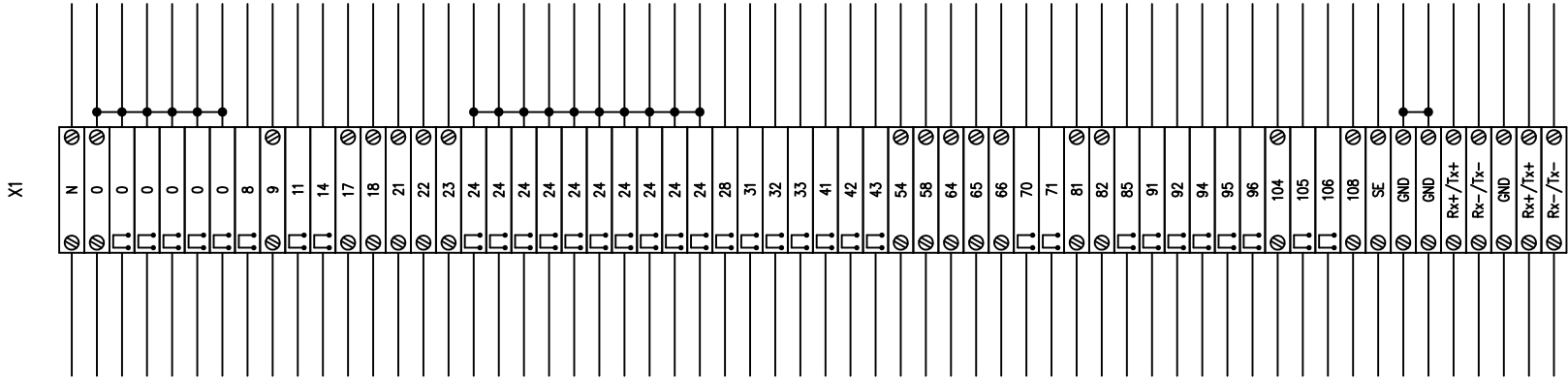


DATE	16/03/2009
DRAW.	N.C.1
CHECK	F.F.1
REV.	MODIFICATIONS
DATE	SIGN.
APPR.	M.M.



HF620C0994

TERMINAL STRIP

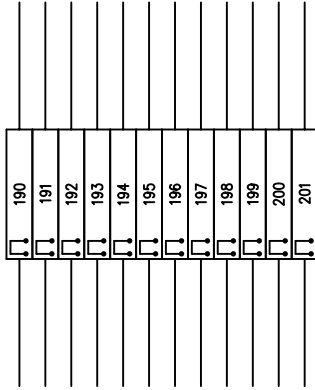


X1

XPE



X3



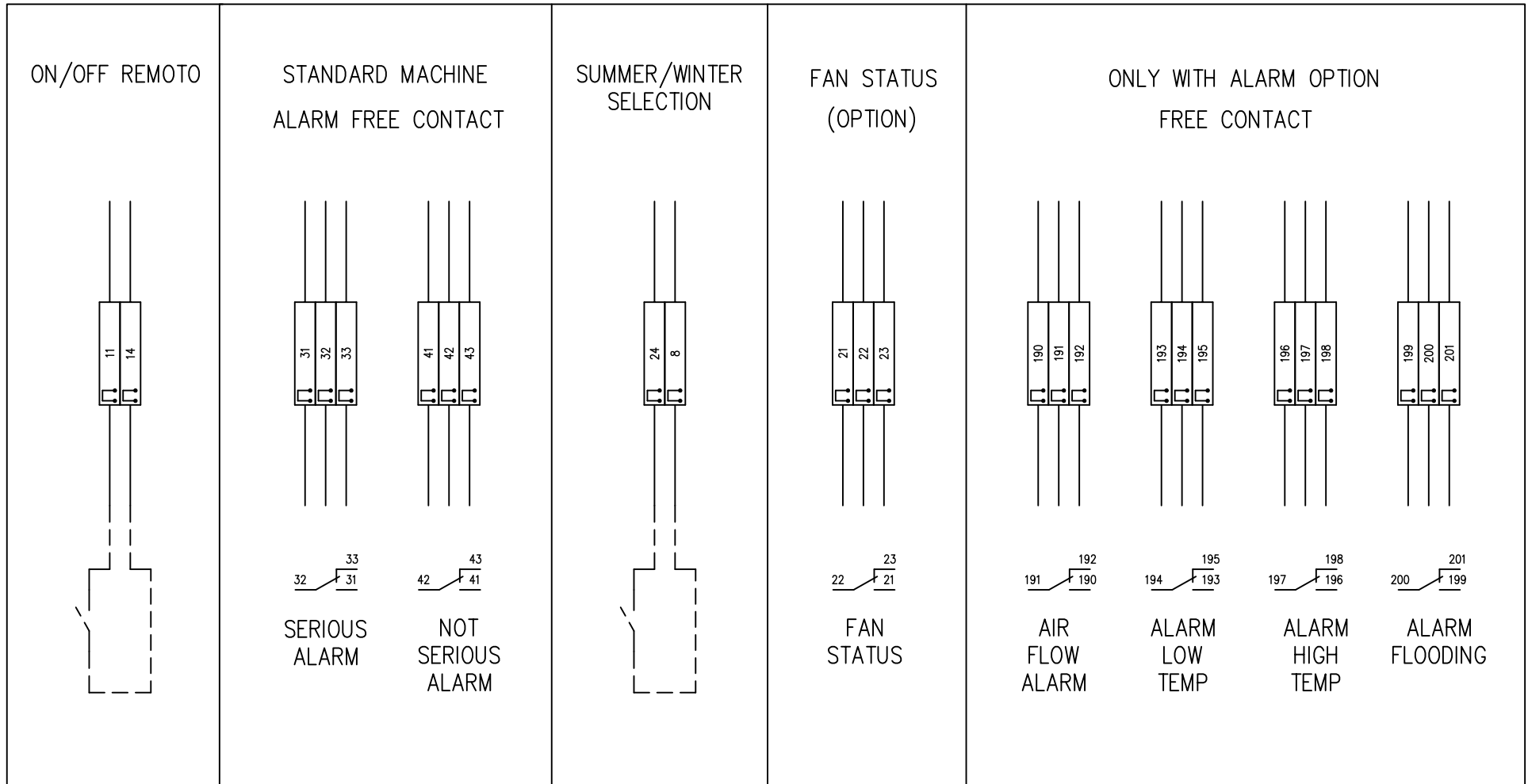
DATE 16/03/2009
 DRAW. N.C.1
 CHECK F.F.1
 APPR. M.M.



HF620C0994

REV.	MODIFICATIONS	DATE	SIGN.	APPR.
1				
2				
3				
4				
5				
6				
7				
8				

USER CONNECTION



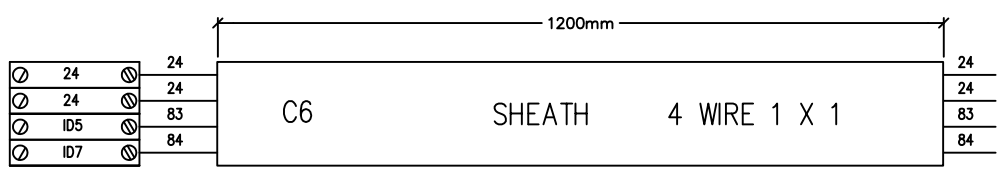
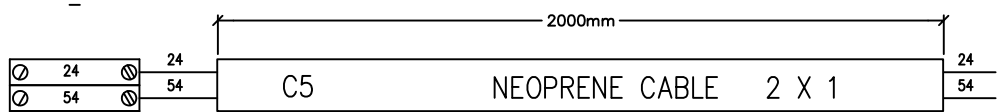
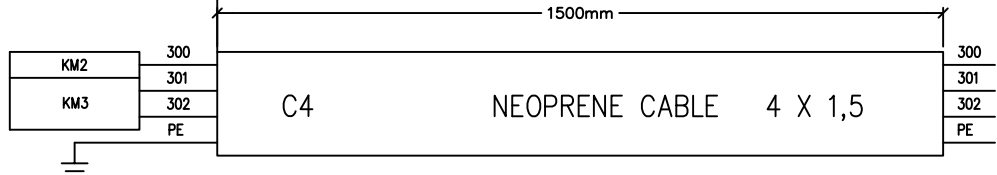
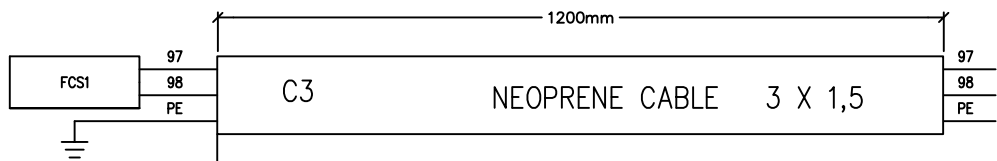
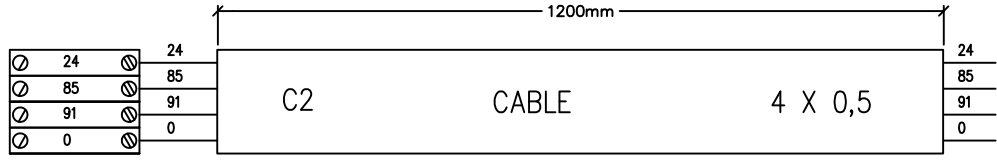
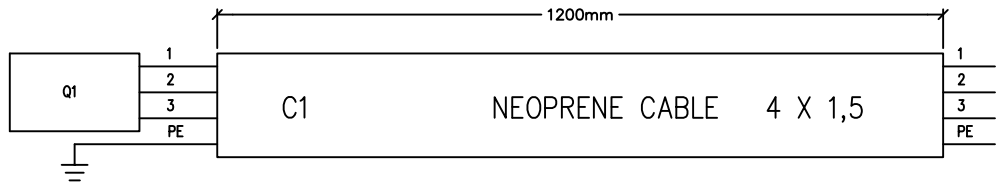
REV.	MODIFICATIONS	DATE	SIGN.	APPR.	M.M.

DATE 16/03/2009
 DRAW. N.C.1
 CHECK F.F.1
 APPR. M.M.



HF620C0994

THE LENGTH OF THE CABLES IS REFERRED TO EXTERNAL SIDE OF THE ELECTRICAL PANEL



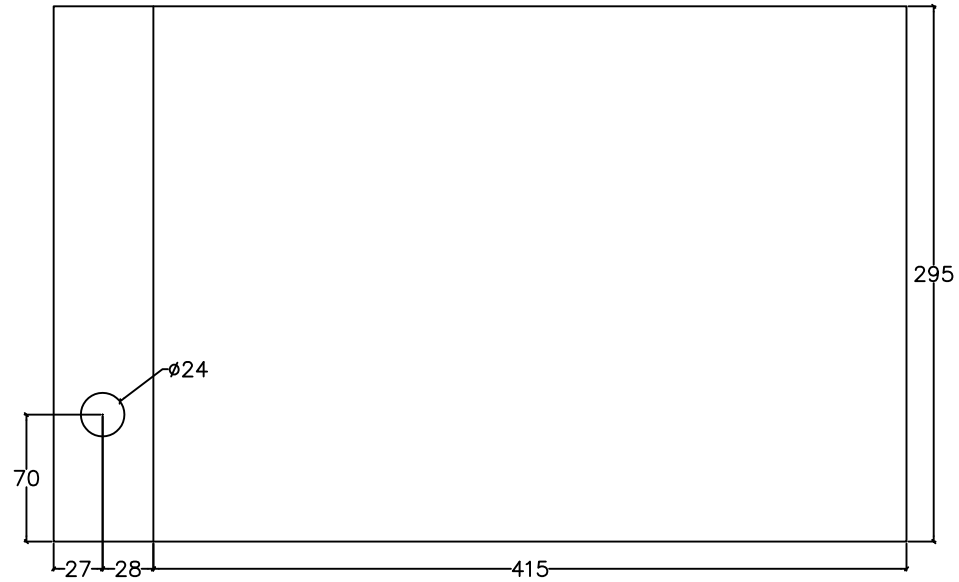
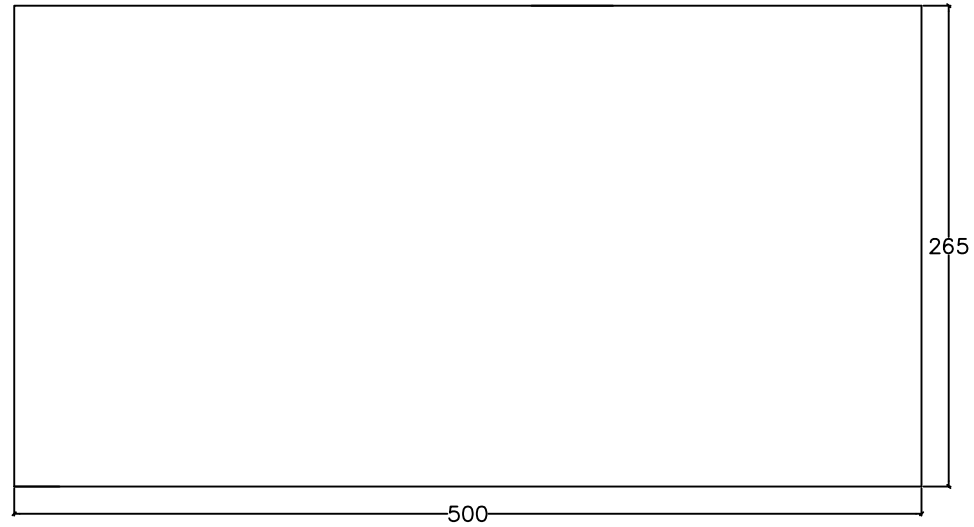
REV.	MODIFICATIONS	DATE	SIGN.	APPR.	M.M.
------	---------------	------	-------	-------	------

DATE 16/03/2009
 DRAW. N.C.1
 CHECK F.F.1



HF620C0994

GROUND PLATE LAYOUT



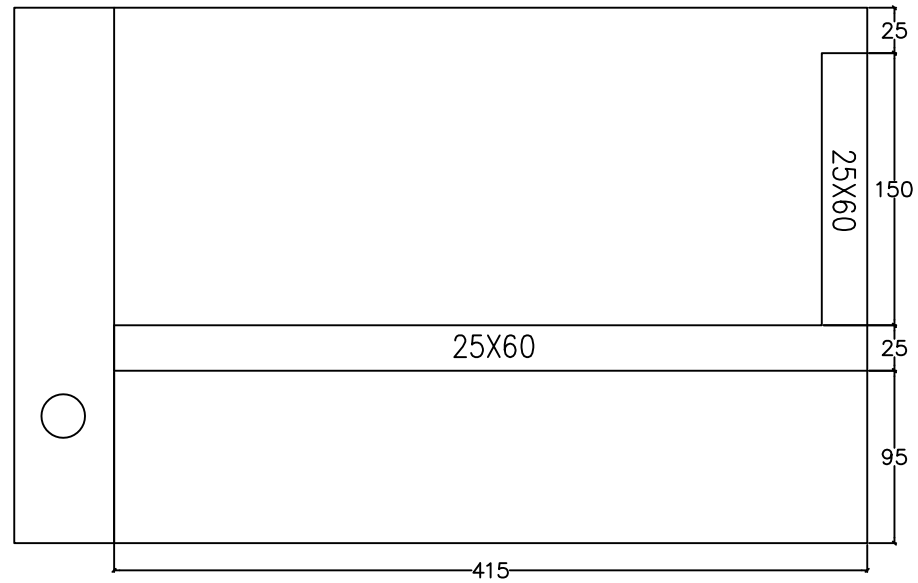
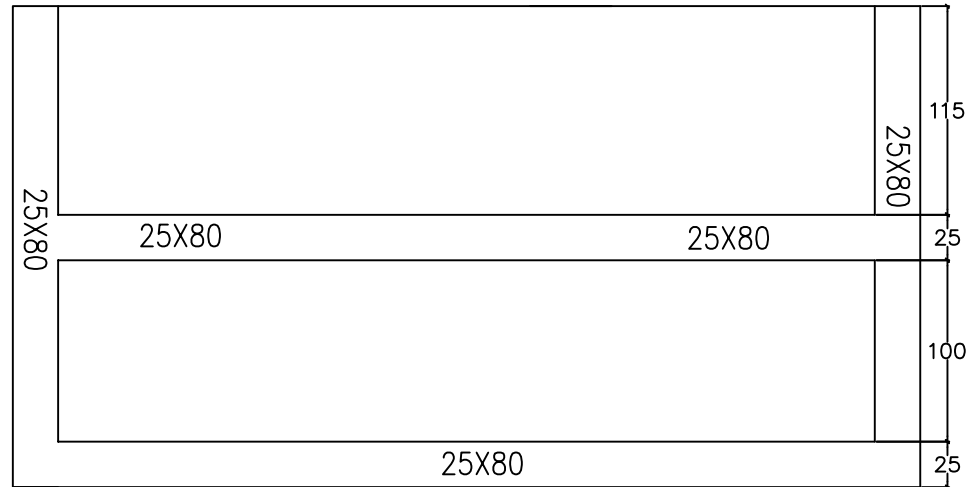
REV.	MODIFICATIONS	DATE	SIGN.	APPR.	M.M.

DATE 16/03/2009
 DRAW. N.C.1
 CHECK F.F.1



HF620C0994

CANAL DISTRIBUTION LAYOUT



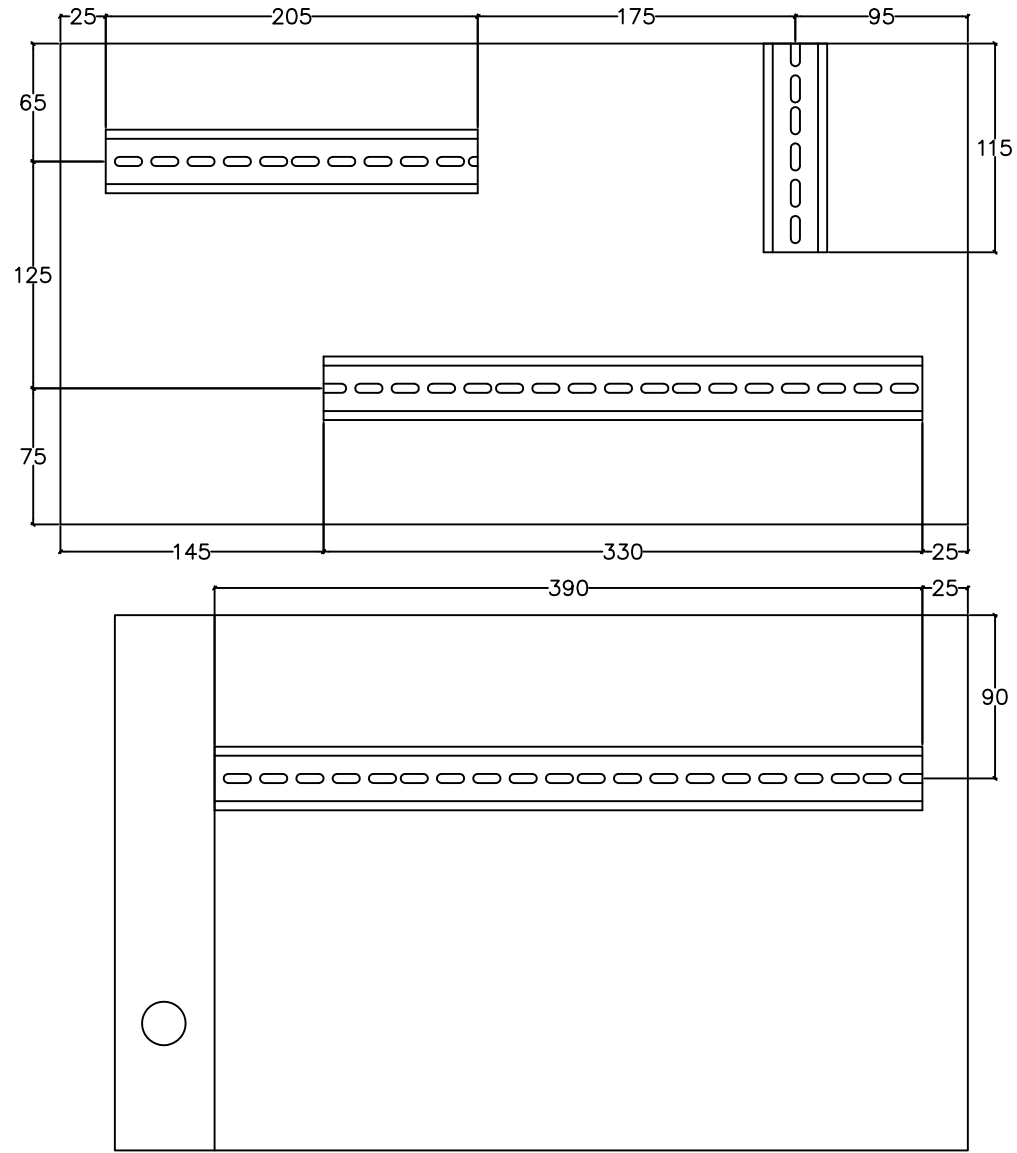
REV.	MODIFICATIONS	DATE	SIGN.	APPR.	M.M.

DATE	16/03/2009
DRAW.	N.C.1
CHECK	F.F.1



HF620C0994

GUIDE DIN DISTRIBUTION LAYOUT



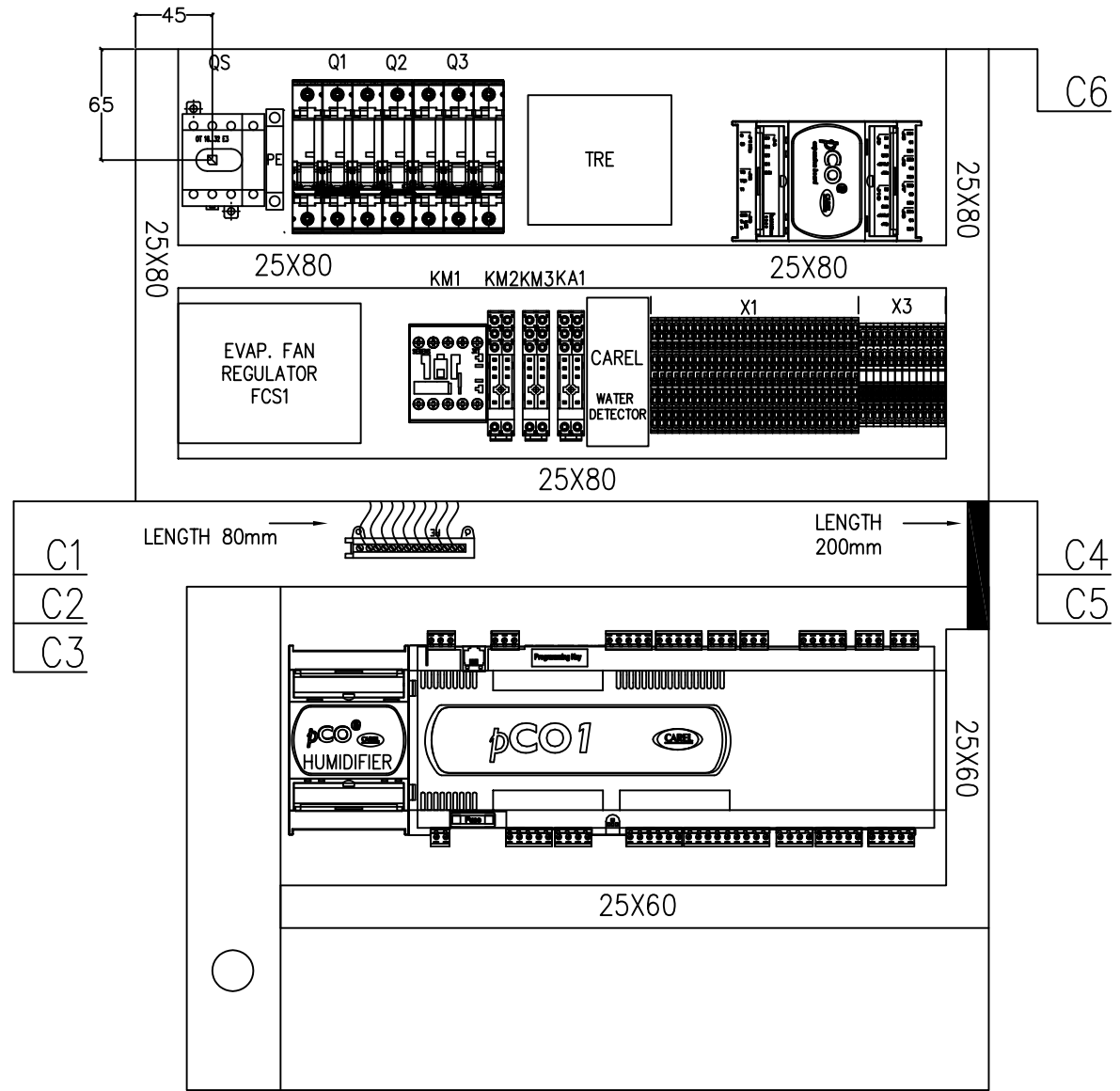
REV.	MODIFICATIONS	DATE	SIGN.	APPR.	M.M.

DATE 16/03/2009
 DRAW. N.C.1
 CHECK F.F.1



HF620C0994

DISTRIBUTION OF THE COMPONENTS IN ELECTRICAL PANEL LAYOUT



REV.	MODIFICATIONS	DATE	SIGN.	APPR.	M.M.

DATE 16/03/2009
 DRAW. N.C.1
 CHECK F.F.1
 APPR. M.M.



HF620C0994

STANDARD BILL OF MATERIALS

1	2	3	4	5	6	7	8
SYMBOL	FUNCTION	BRAND	CODE	DESCRIPTION	QUANTITY	M.U.	
QS	MAIN SWITCH	ABB	OT40F4N2+OHY3AJ+OXS5X85	MAIN SWITCH 4P In= 40A	1	PCE	
Q1	FAN + TR PROTECTION	SIEMENS	5SY6 310-7	INT. AUT. 3P C 10A 6kA	1	PCE	
Q2	AUXILIARY CIRCUIT PROTECTION	SIEMENS	5SY6 104-7	INT. AUT. 1P C 4A 6KA	1	PCE	
XPE	TERMINAL SRIP	PHOENIX	3044212	CLAMP UT 16-PE	1	PCE	
X1	TERMINAL SRIP	PHOENIX	3031157	CLAMP STTB 1,5	30	PCE	
TR	TRANSFORMER	MARINI		TRANSFORMER Vin=230V / Vout=24V S=100VA	1	PCE	
	GROUND PLATE	HIREF	HF17000909 HF17001097	GROUND PLATE	1	PCE	
	GROUND BAR			GROUND BAR	1	PCE	

DATE 16/03/2009
 DRAW. N.C.1
 CHECK F.F.1
 APPR. M.M.



HF620C0994

HUMIDIFIER OPTION

	SYMBOL	FUNCTION	BRAND	CODE	DESCRIPTION	QUANTITY	M.U.
A	Q3	HUMIDIFIER / HEATER PROTECTION	SIEMENS	5SY6316-7/HF40000730	INT. AUT. 3P C16A 6KA	1	PCE
	KM1	ON/OFF HUMIDIFIER	SIEMENS	HF40000742 3RT1015-1AB01	CONTACTOR 3 KW 3P 400V BOB. 24V AC	1	PCE

HEATERS OPTION

	SYMBOL	FUNCTION	BRAND	CODE	DESCRIPTION	QUANTITY	M.U.
B	Q3	HUMIDIFIER / HEATER PROTECTION	SIEMENS	5SY6316-7/HF40000730	INT. AUT. 3P C16A 6KA	1	PCE
	KM2	ON/OFF HEATER 1* STEP	FINDER	HF40000253+HF40000251 40528024+9505+09571	RELAY	1	PCE
C	KM3	ON/OFF HEATER 2* STEP	FINDER	HF40000372+HF40000246 40528024+9505+09571	RELAY	1	PCE

UNIT STATUS RELAY OPTION

	SYMBOL	FUNCTION	BRAND	CODE	DESCRIPTION	QUANTITY	M.U.
D	KA1	RELAY	FINDER	HF40000253 + HF40000251 40528024+9505+09571	RELAY	1	PCE

POWER DIP PROTECTION OPTION

	SYMBOL	FUNCTION	BRAND	CODE	DESCRIPTION	QUANTITY	M.U.
E	KT1	TIMER	FINDER	HF40000876 801102400000	TIMER	1	PCE

CONDENSATE DRAIN PUMP OPTION

SYMBOL	FUNCTION	BRAND	CODE	DESCRIPTION	QUANTITY	M.U.
F1	CONDENSATE DRAIN PUMP PROTECTION	ITALWEBER	0101001	FUSE IN GLASS 5 X 20 In= 1A	1	PCE
F	FUSE BOX	PHOENIX	3004100	FUSE BOX TIPO G 5 X 20	1	PCE

REV.	MODIFICATIONS	DATE	SIGN.	APPR.	M.M.
------	---------------	------	-------	-------	------

DATE	16/03/2009
DRAW.	N.C.1
CHECK	F.F.1



HF620C0994