



Serie
Model

DHAD/UR
132 - 212

Drawing code

HF620C1169S

Controller

PC01

Power supply
Auxiliary supply

400V/3~/50Hz + N
24VAC

-
-

Created by
Date

N.C.1
12/01/2010

Revision by
On

-
-

Index

/

Max power (kW)
FLA (A)
RLA (A)

SEE TABLE ON PAGE 2
SEE TABLE ON PAGE 2
SEE TABLE ON PAGE 2

Main protection

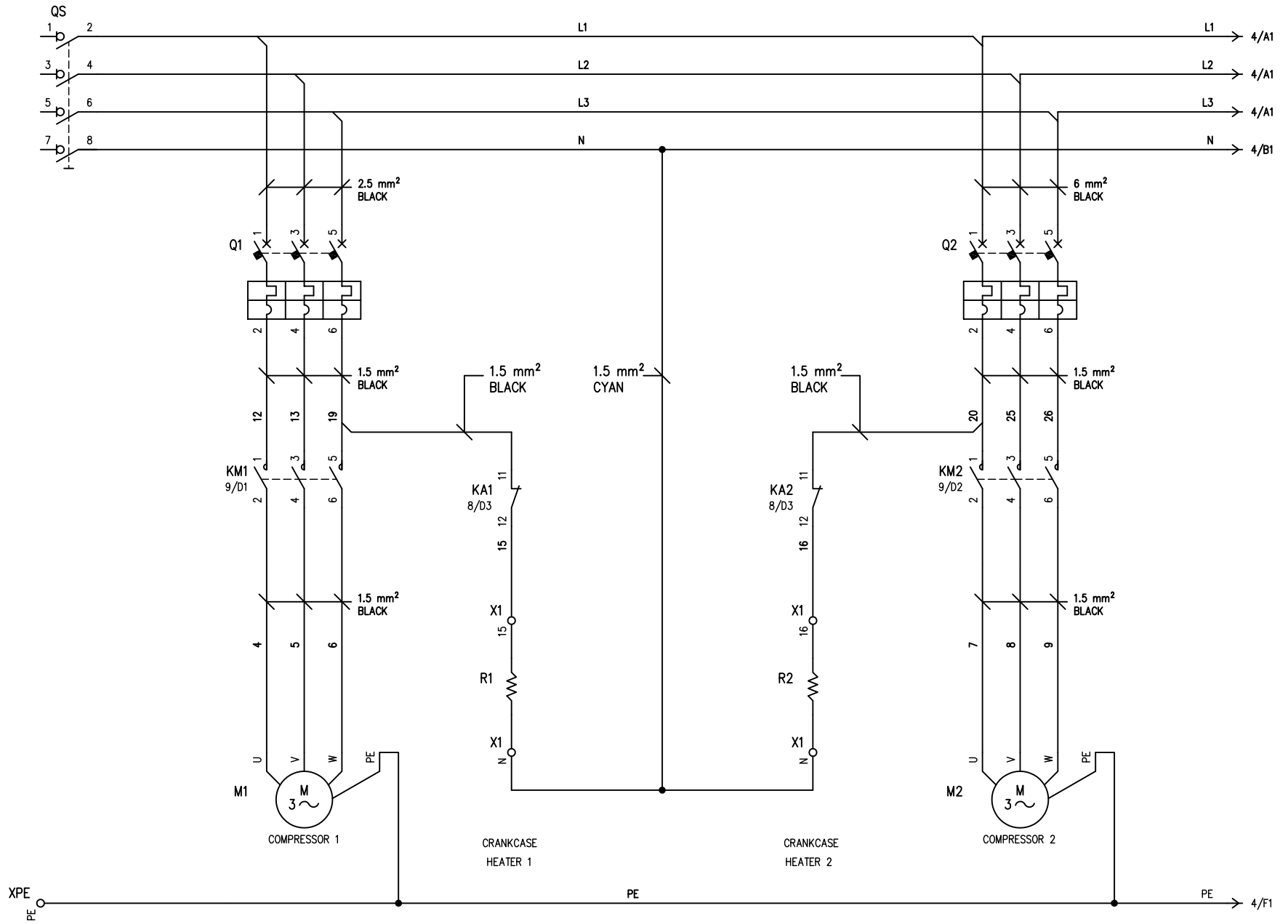
SEE TABLE ON PAGE 2

JREF

A	MODEL	POWER SUPPLY	MAX ABSORBED POWER (kW)	MAX ABSORBED CURENT (A)	RLA (A)	MAIN SUGGEST PROTECTION gG FUSE TYPE	MIN SUGGEST CROSS SECTION LINE (mm ²) VS MAX LENGTH (m) AIR TEMPERATURE 30°C – MULTICORE CABLE – CABLE INSIDE TUBE ON AIR			
							PVC ISULATED		EPR (G7-G10) ISULATED	
							CABLE WORKING TEMPERATURE 70°C	MAX LENGTH VOLTAGE DROP<4%	CABLE WORKING TEMPERATURE 90°C	MAX LENGTH VOLTAGE DROP<4%
	132 COOLING ONLY	LINE	6,9	13,9	41	20	2,5	90	2,5	90
	132 COOLING + HEATING	LINE	12,5	27,1	54	32	6	110	6	110
	212 COOLING ONLY	LINE	9,1	17,4	57	25	4	115	4	115
	212 COOLING + HEATING	LINE	14,7	30,7	70	40	10	161	6	97



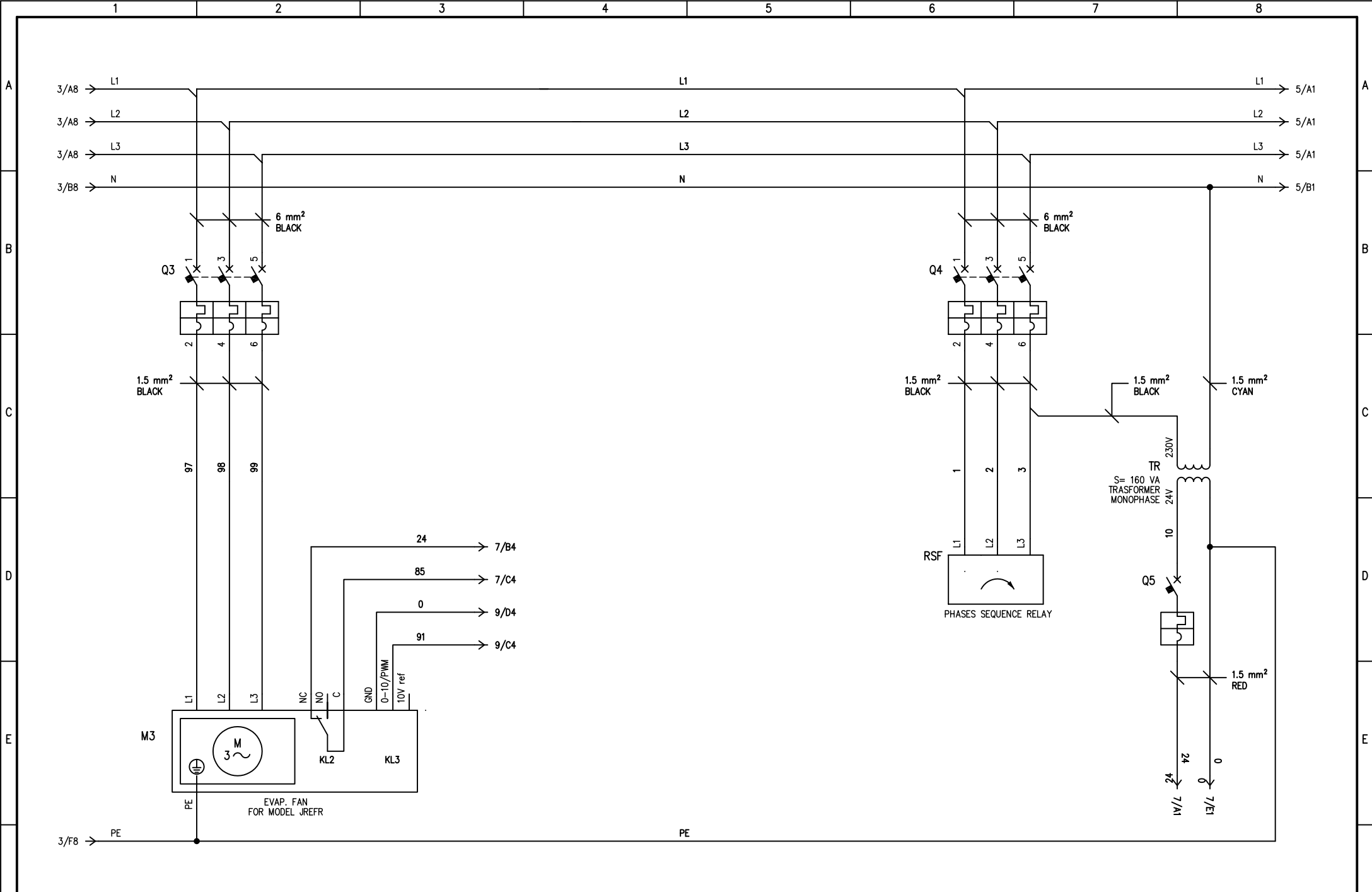
POWER SUPPLY
400/3~/50Hz + N



DATE	12/01/2010
DRAW.	N.C.1
CHECK	F.F.1
REV.	MODIFICATIONS
DATE	SIGN.
APPR.	M.M.



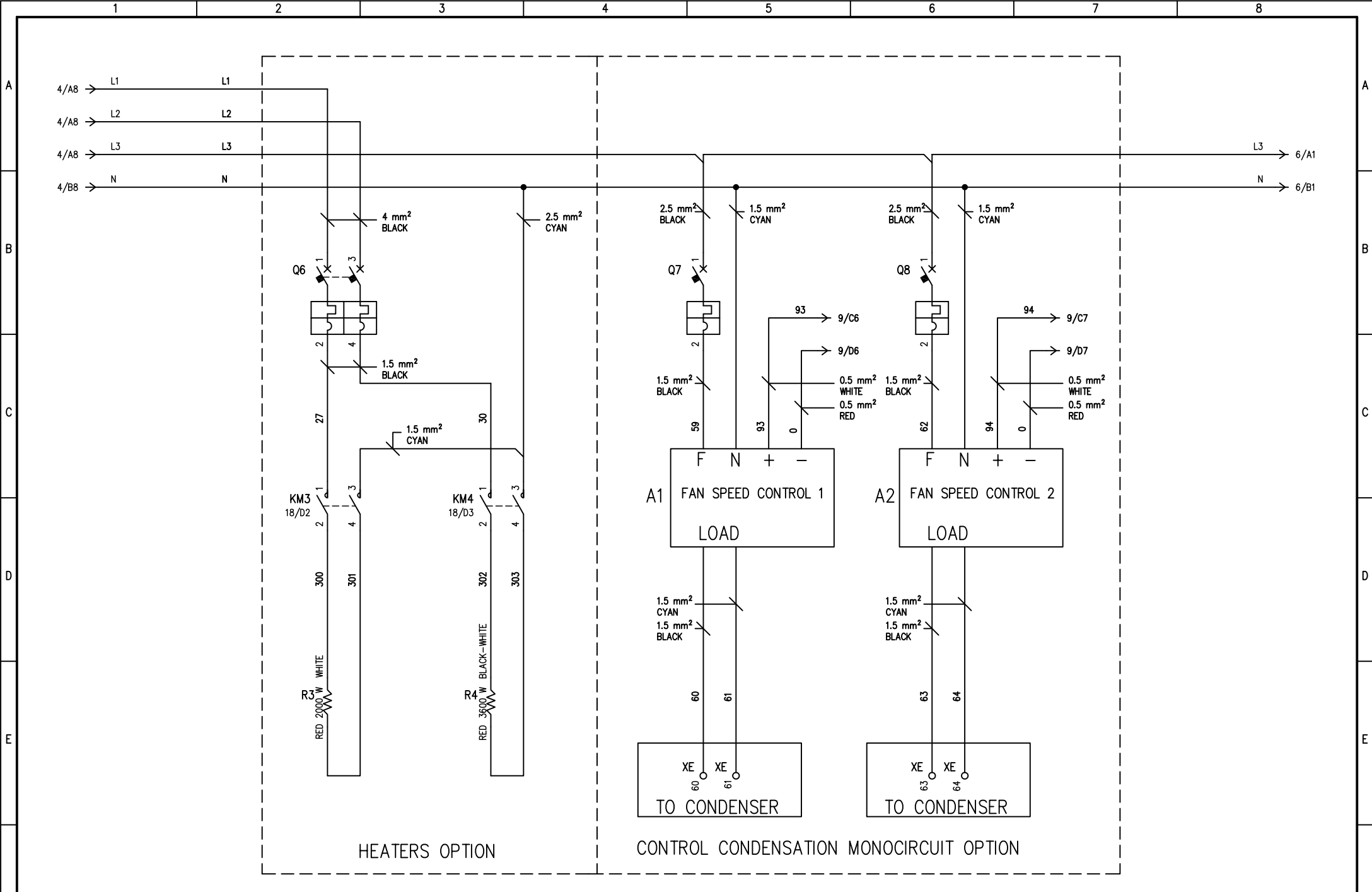
HF620C1169S



DATE	12/01/2010
DRAW.	N.C.1
CHECK	F.F.1
REV.	MODIFICATIONS
DATE	SIGN.
APPR.	M.M.



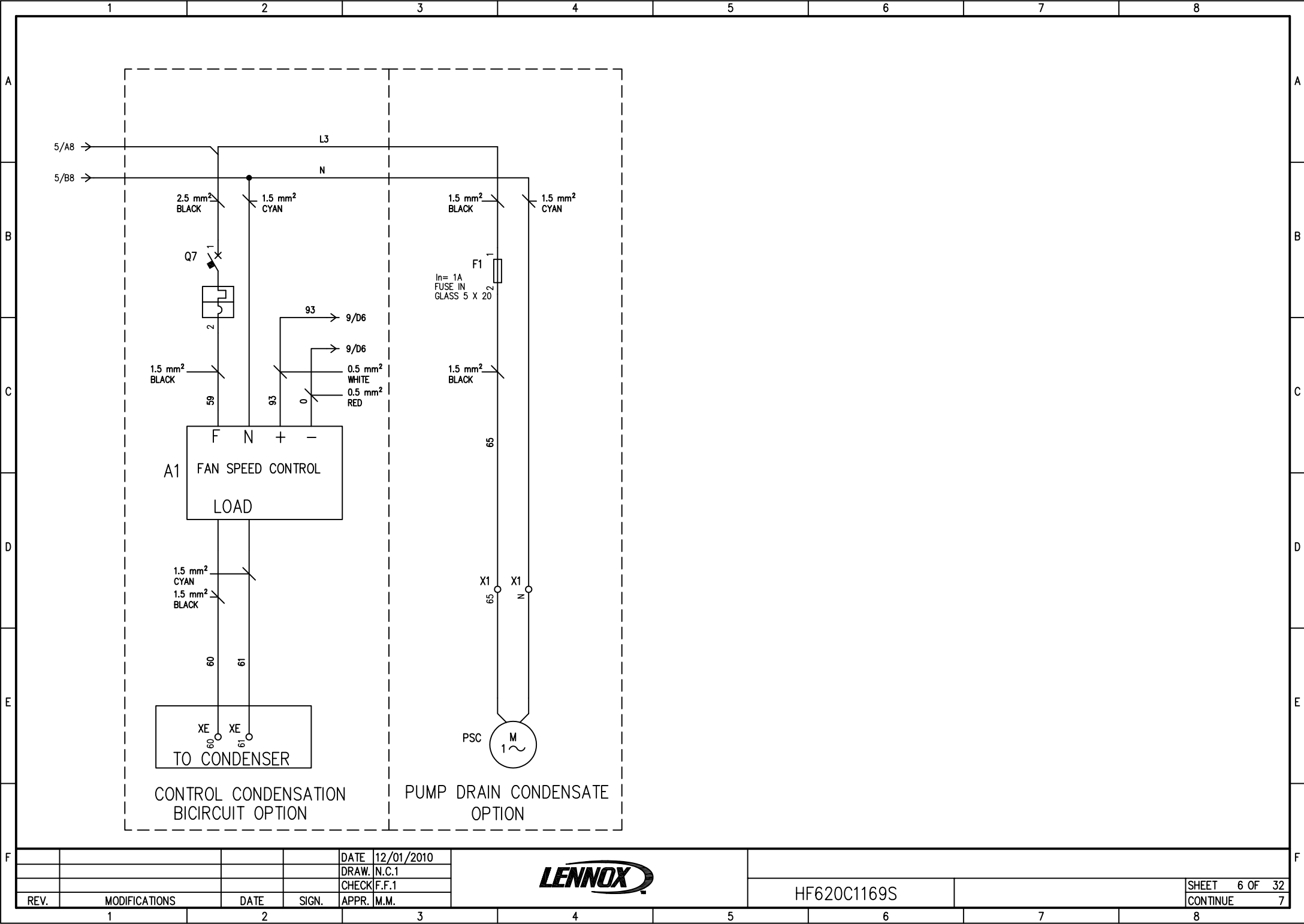
HF620C1169S



DATE	12/01/2010
DRAW.	N.C.1
CHECK	F.F.1
REV.	MODIFICATIONS
DATE	SIGN.
APPR.	M.M.



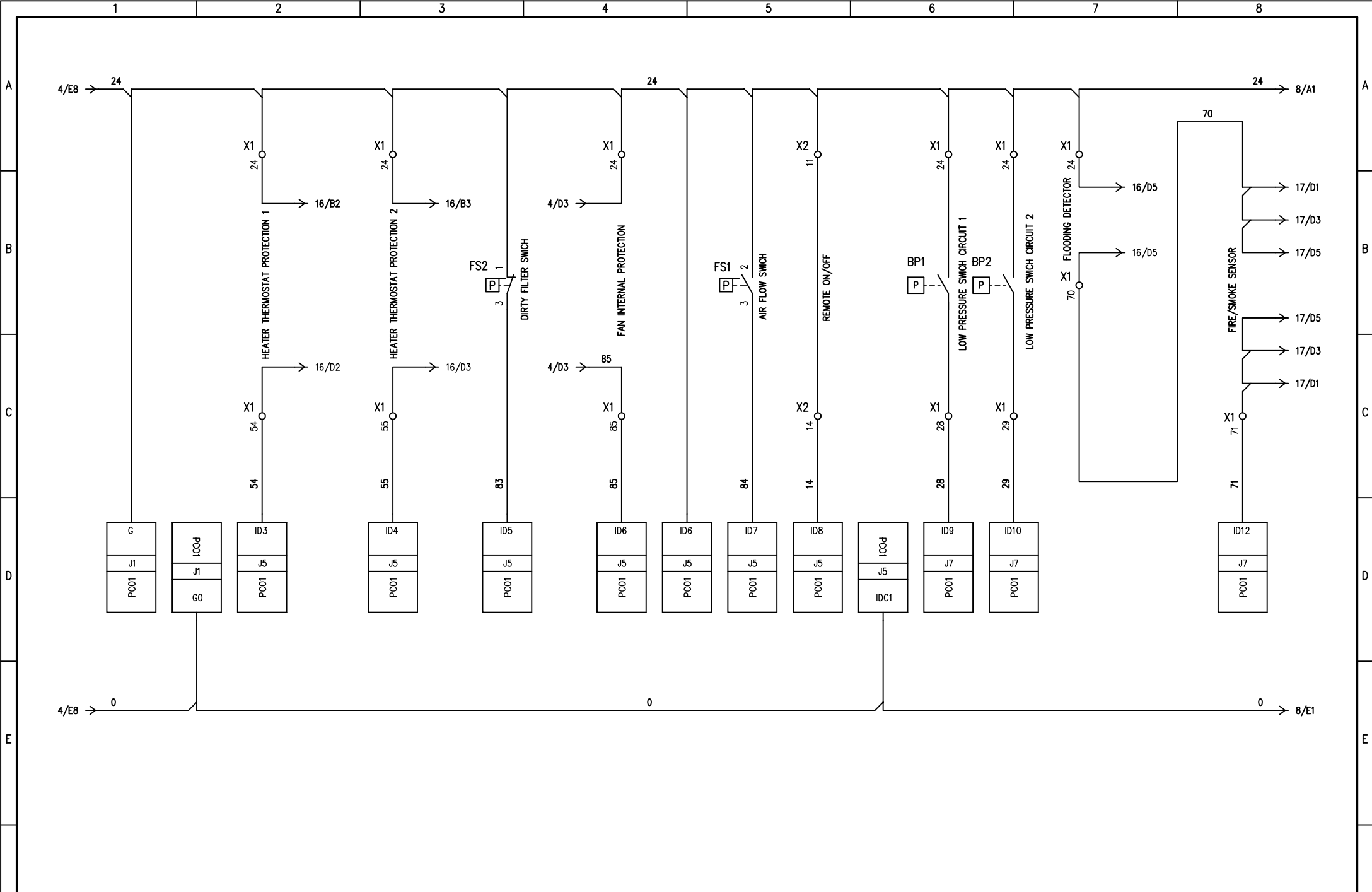
HF620C1169S



DATE	12/01/2010
DRAW.	N.C.1
CHECK	F.F.1
REV.	MODIFICATIONS
DATE	SIGN.
APPR.	M.M.



HF620C1169S

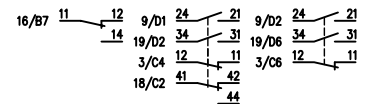
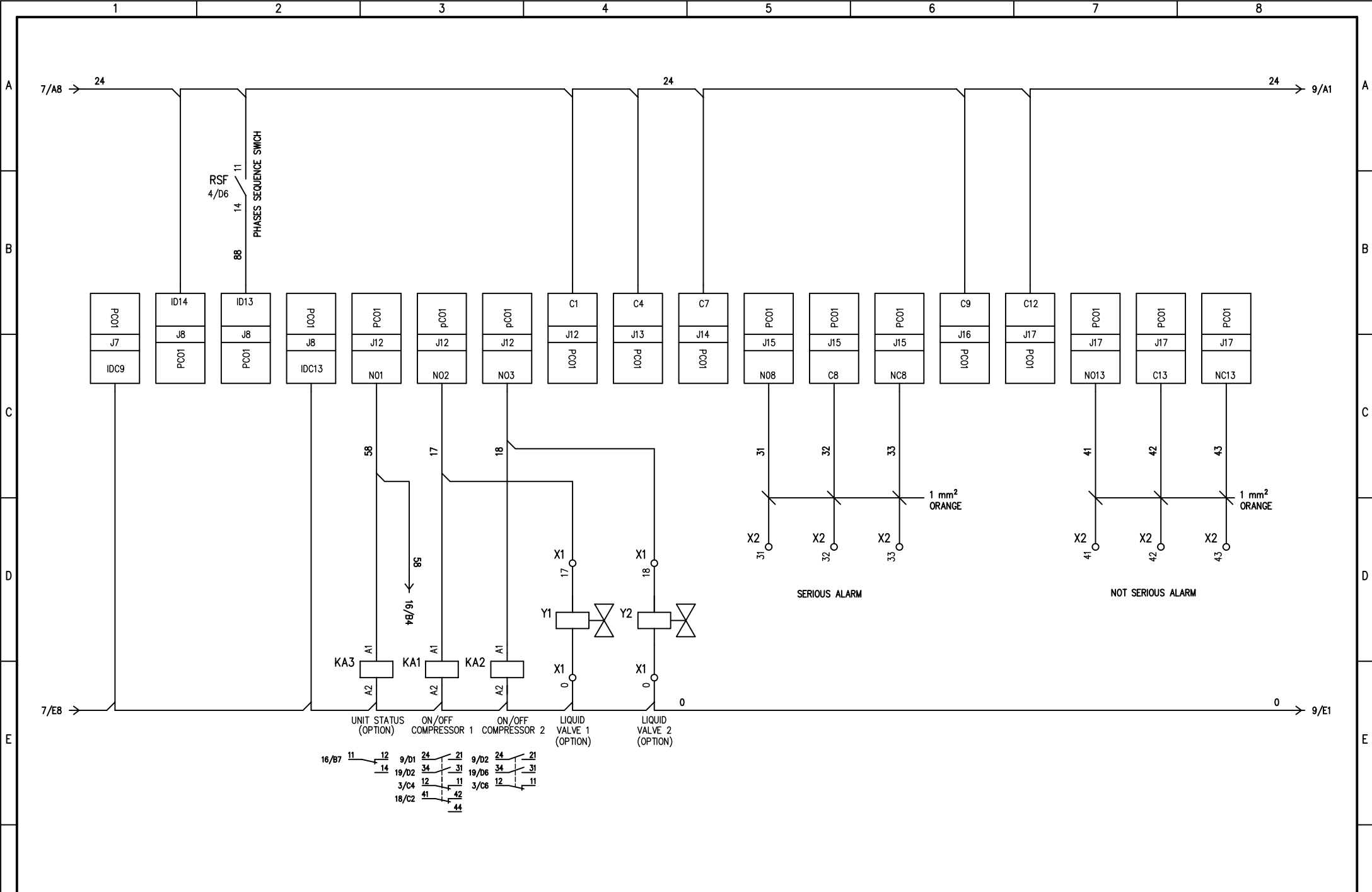


REV.	MODIFICATIONS	DATE	SIGN.	APPR.	M.M.

DATE 12/01/2010
 DRAW. N.C.1
 CHECK F.F.1
 APPR. M.M.



HF620C1169S

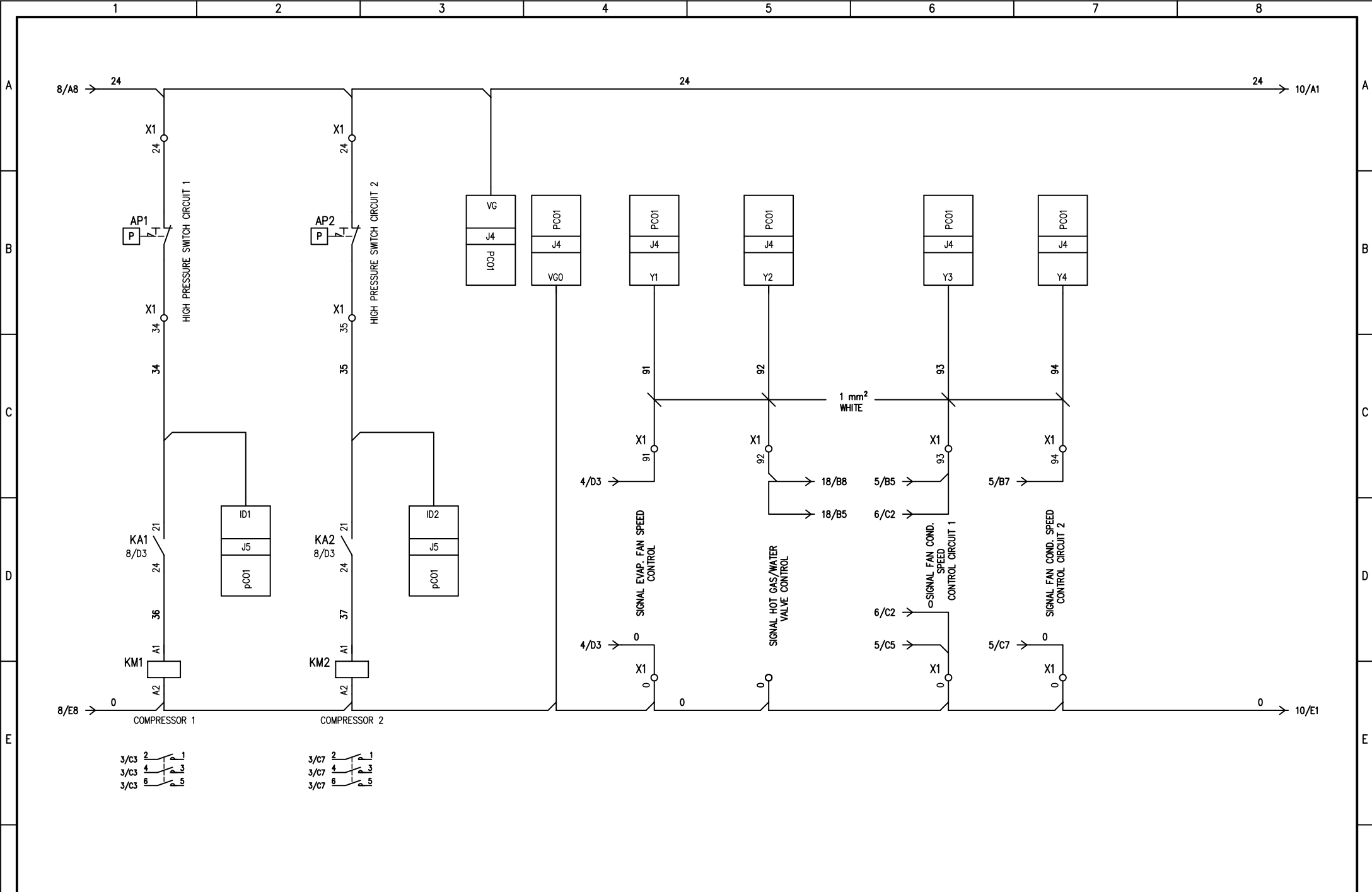


REV.	MODIFICATIONS	DATE	SIGN.	APPR.	M.M.

DATE 12/01/2010
 DRAW. N.C.1
 CHECK F.F.1



HF620C1169S

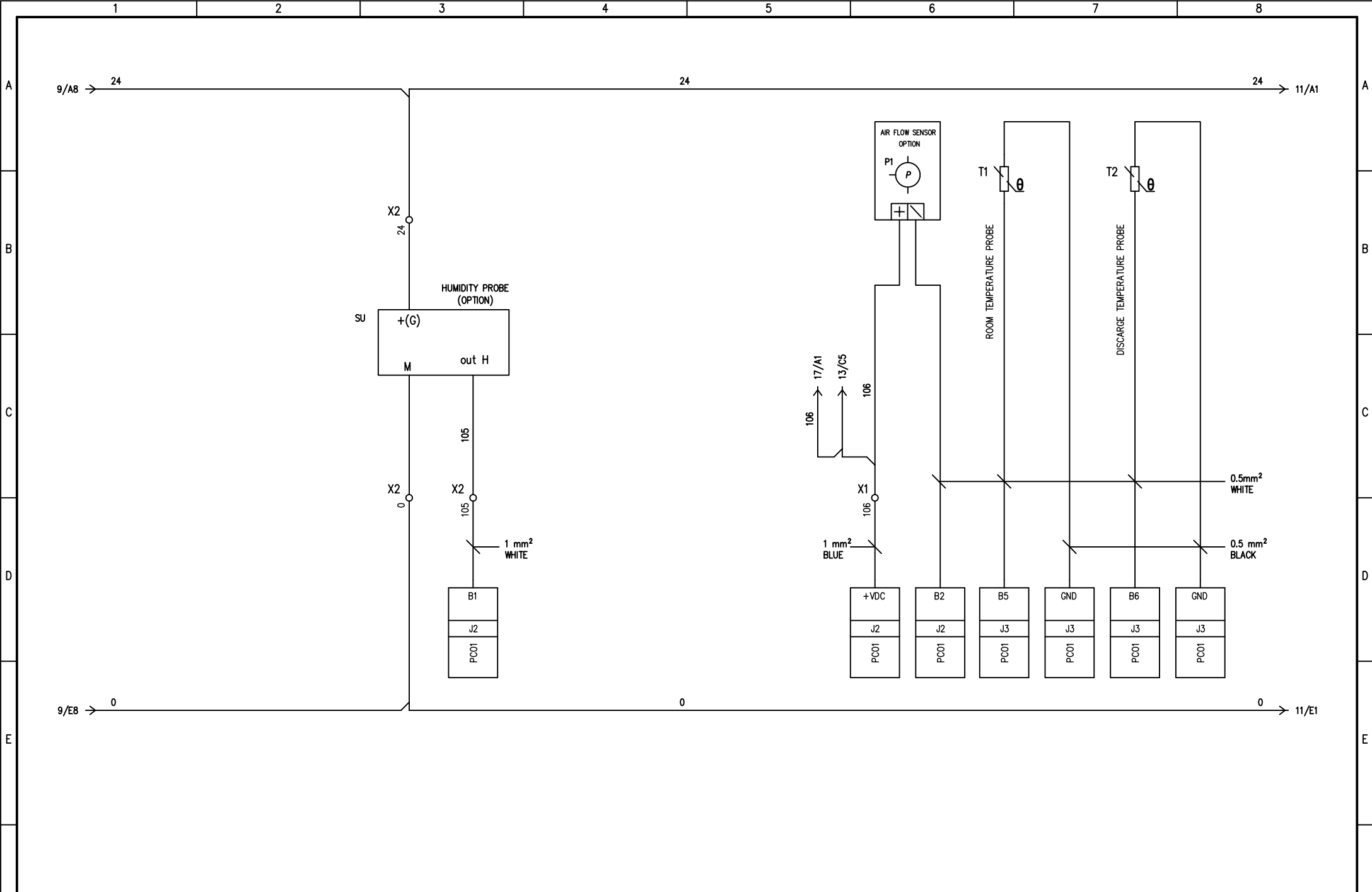


REV.	MODIFICATIONS	DATE	SIGN.	APPR.	M.M.

DATE 12/01/2010
 DRAW. N.C.1
 CHECK F.F.1
 APPR. M.M.



HF620C1169S

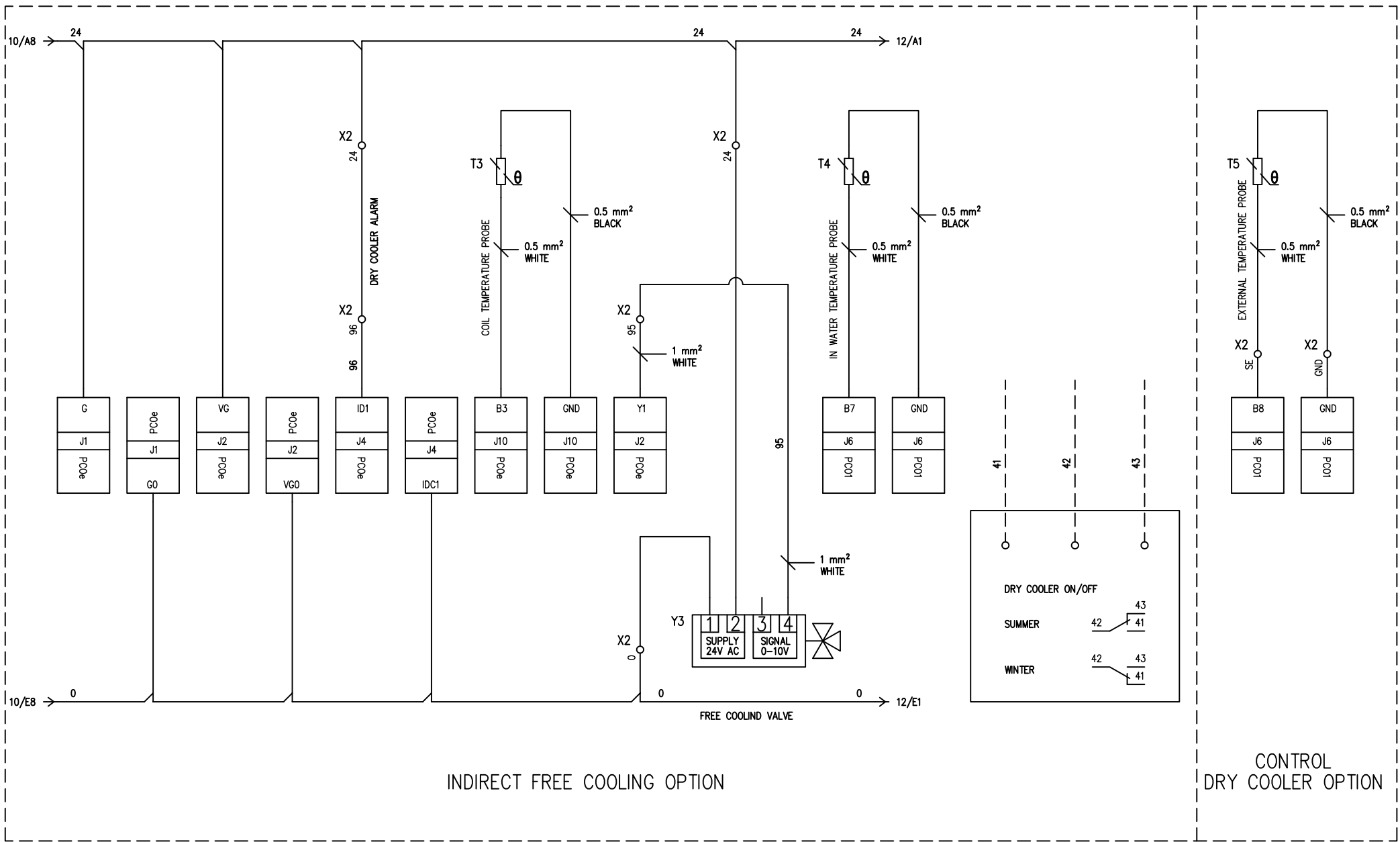


REV.	MODIFICATIONS	DATE	SIGN.	APPR.	M.M.

DATE 12/01/2010
 DRAW. N.C.1
 CHECK F.F.1



HF620C1169S



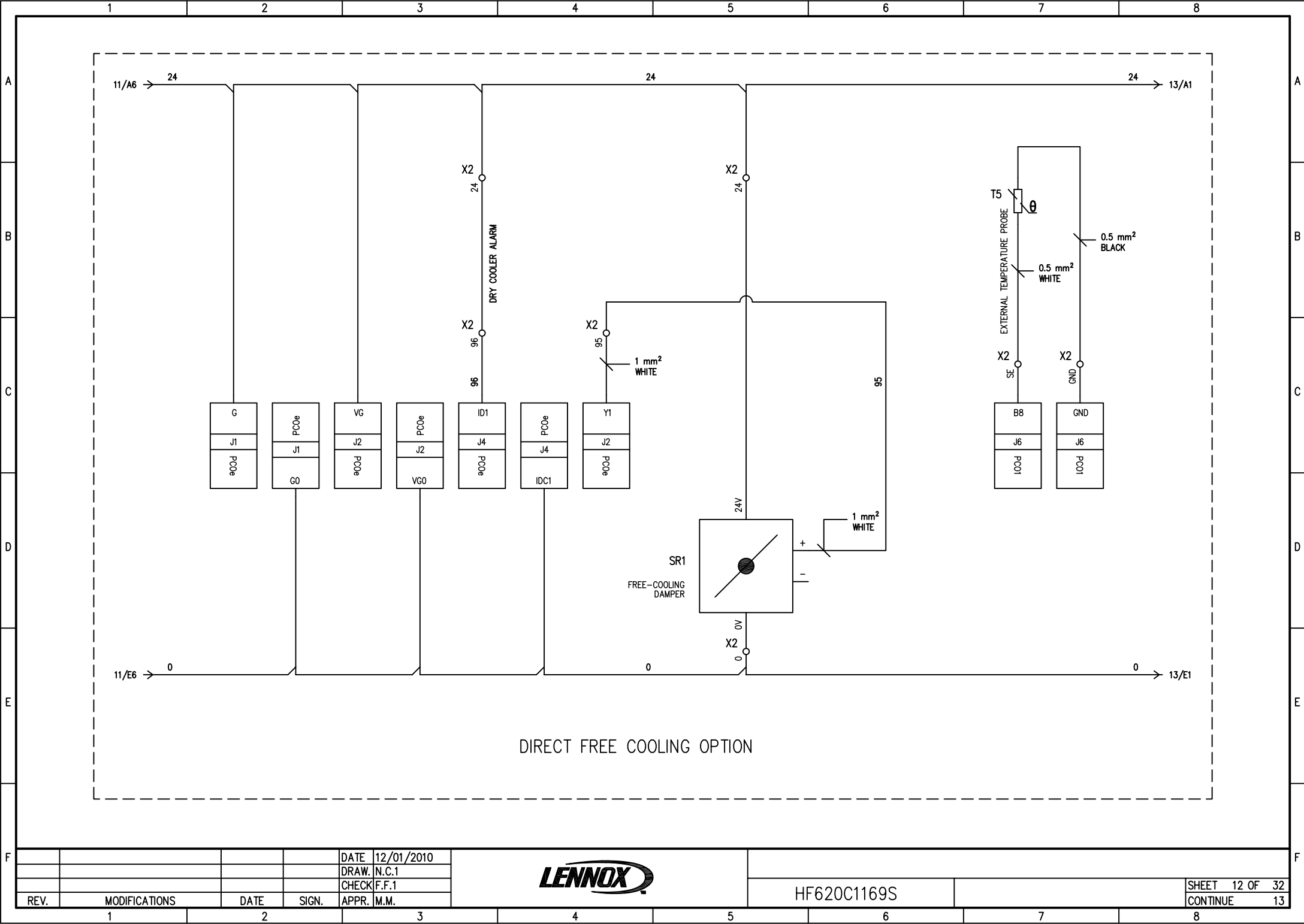
INDIRECT FREE COOLING OPTION

CONTROL DRY COOLER OPTION

DATE	12/01/2010
DRAW.	N.C.1
CHECK	F.F.1
REV.	MODIFICATIONS
DATE	SIGN.
APPR.	M.M.



HF620C1169S

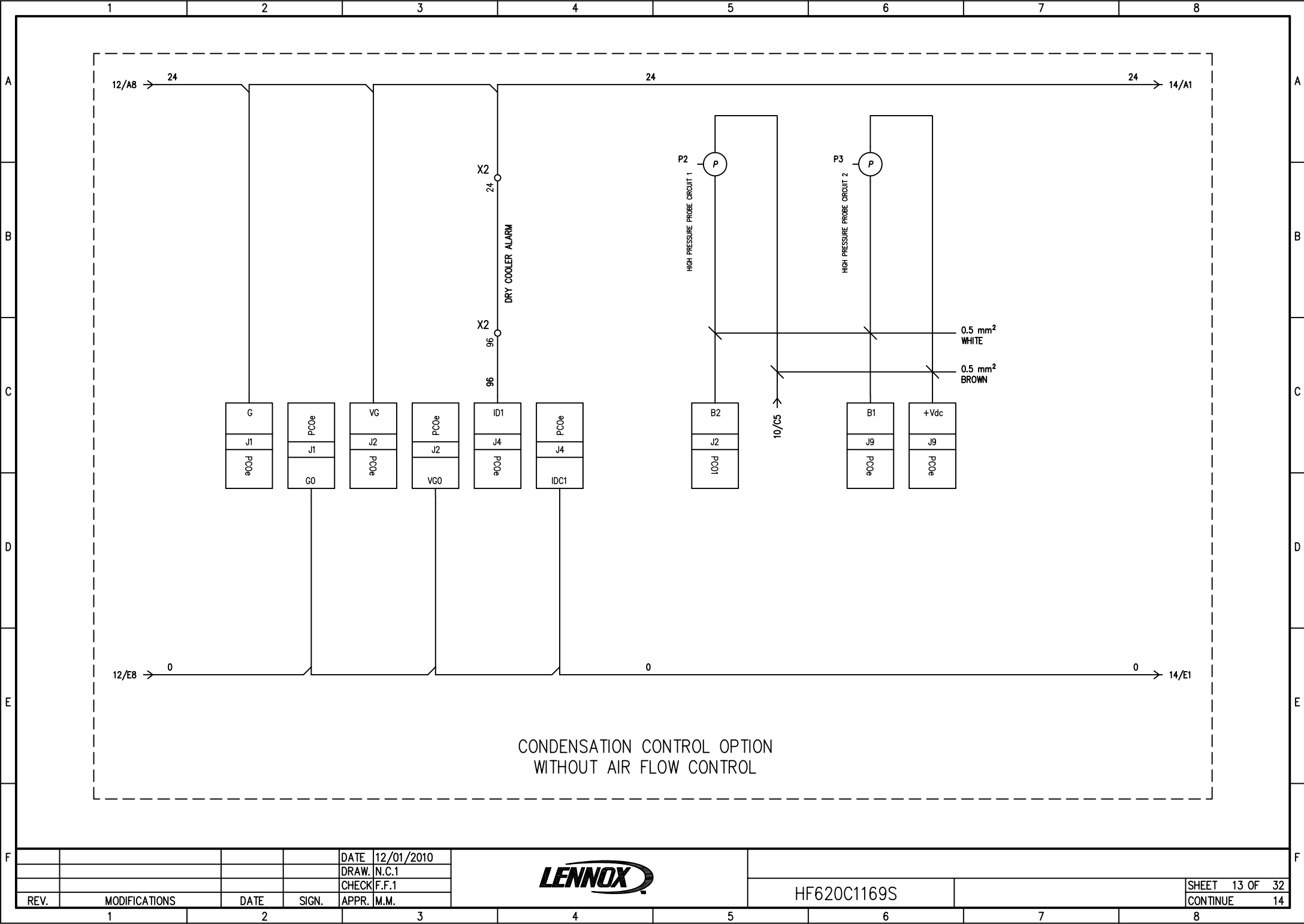


REV.	MODIFICATIONS	DATE	SIGN.	APPR.	M.M.

DATE 12/01/2010
 DRAW. N.C.1
 CHECK F.F.1
 APPR. M.M.



HF620C1169S

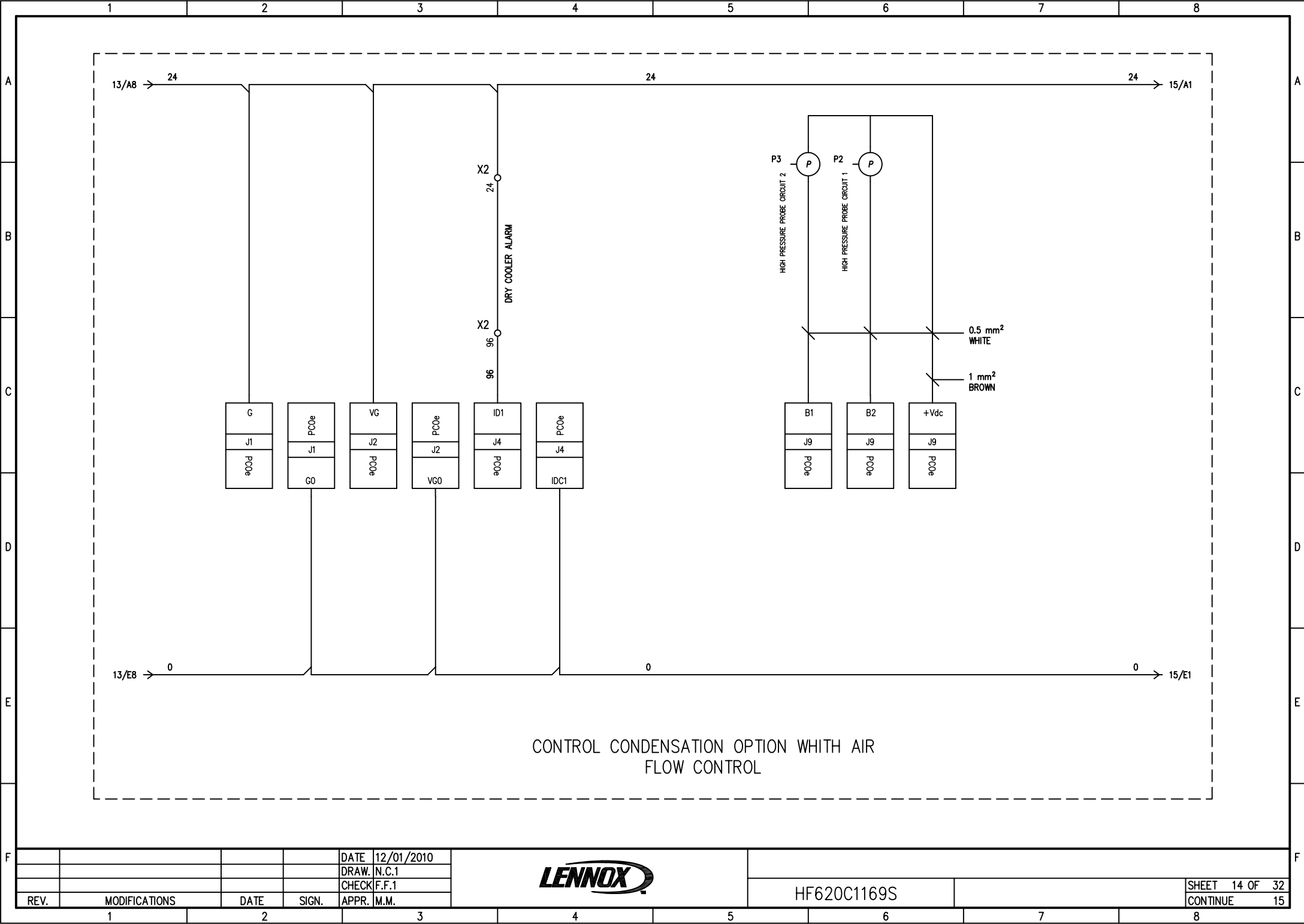


CONDENSATION CONTROL OPTION
WITHOUT AIR FLOW CONTROL

DATE	12/01/2010
DRAW.	N.C.1
CHECK	F.F.1
REV.	MODIFICATIONS
DATE	SIGN.
APPR.	M.M.



HF620C1169S

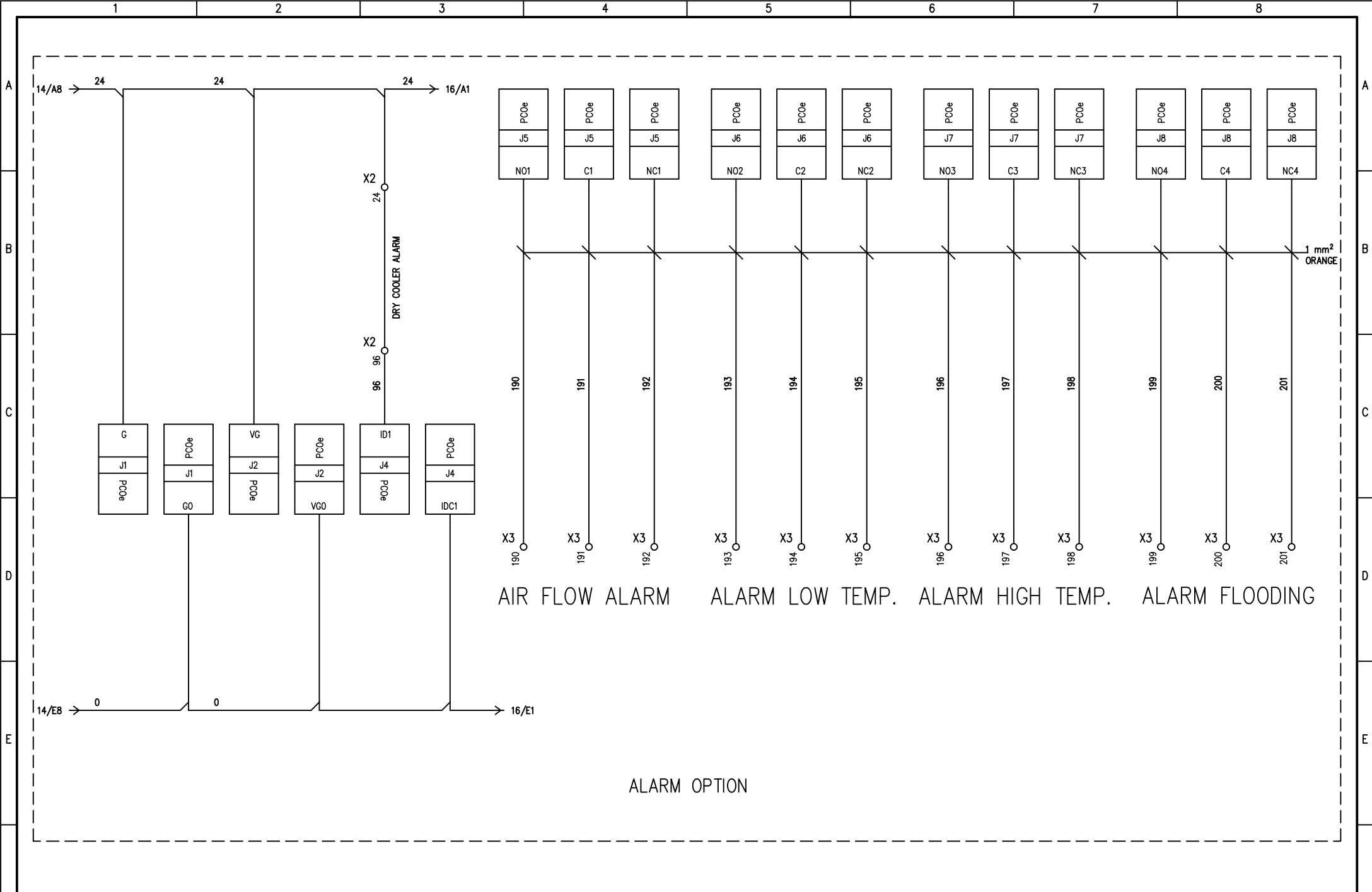


CONTROL CONDENSATION OPTION WITH AIR
FLOW CONTROL

DATE	12/01/2010
DRAW.	N.C.1
CHECK	F.F.1
REV.	MODIFICATIONS
DATE	SIGN.
APPR.	M.M.



HF620C1169S

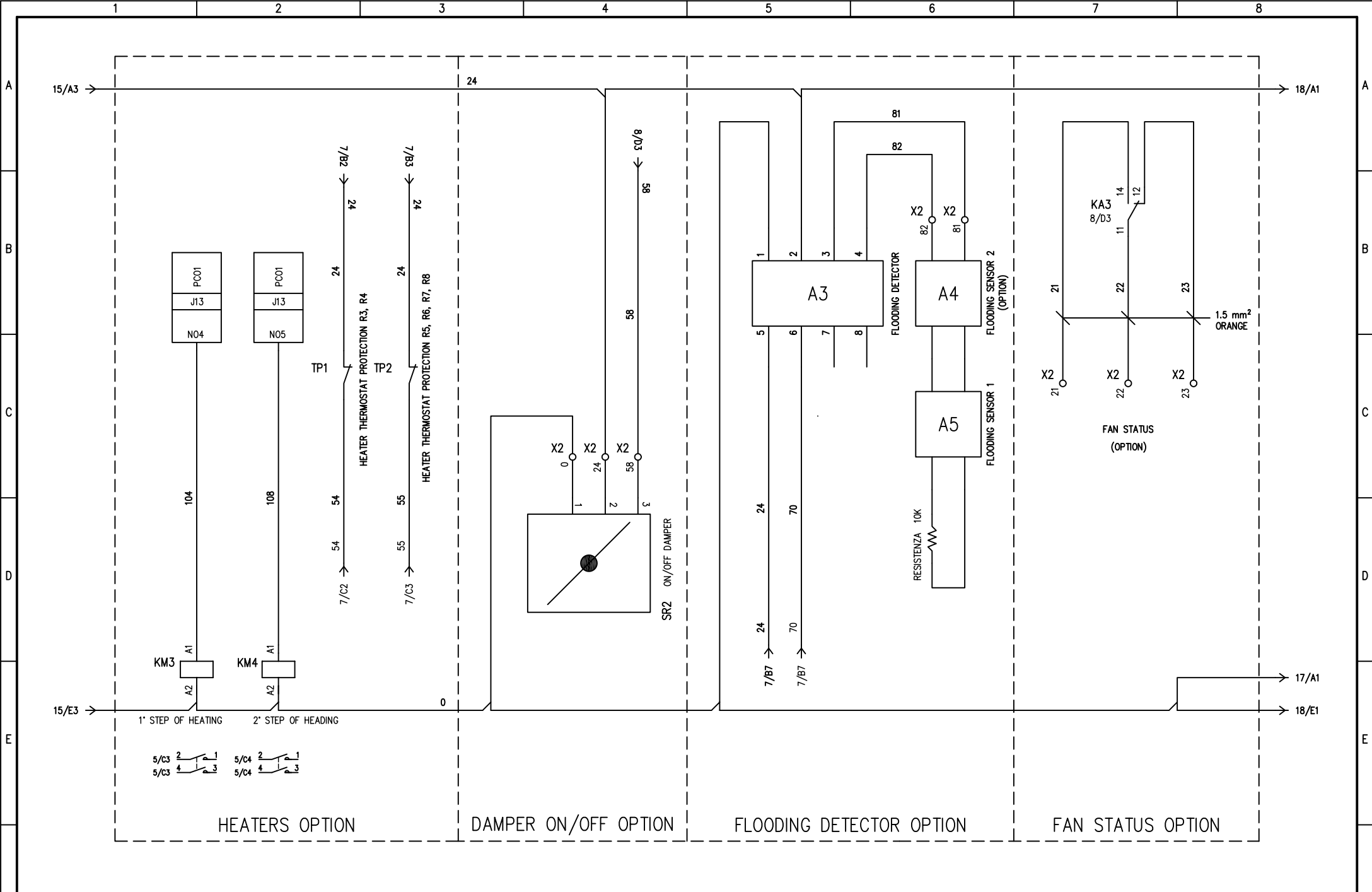


REV.	MODIFICATIONS	DATE	SIGN.	APPR.	M.M.
1					
2					

DATE 12/01/2010
 DRAW. N.C.1
 CHECK F.F.1
 APPR. M.M.



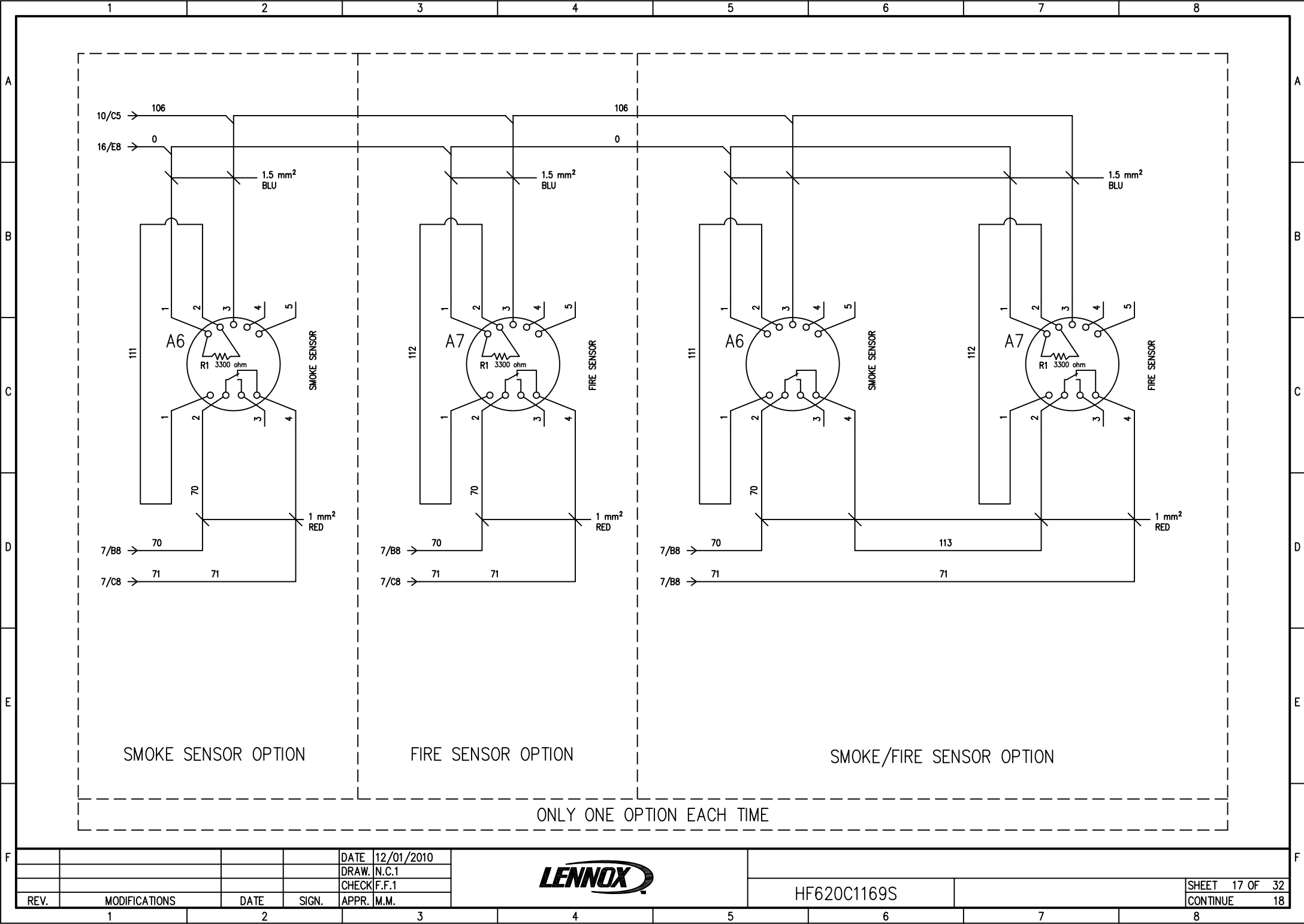
HF620C1169S



REV.	MODIFICATIONS	DATE	SIGN.	APPR.
1				
2				

DATE 12/01/2010
 DRAW. N.C.1
 CHECK F.F.1
 APPR. M.M.

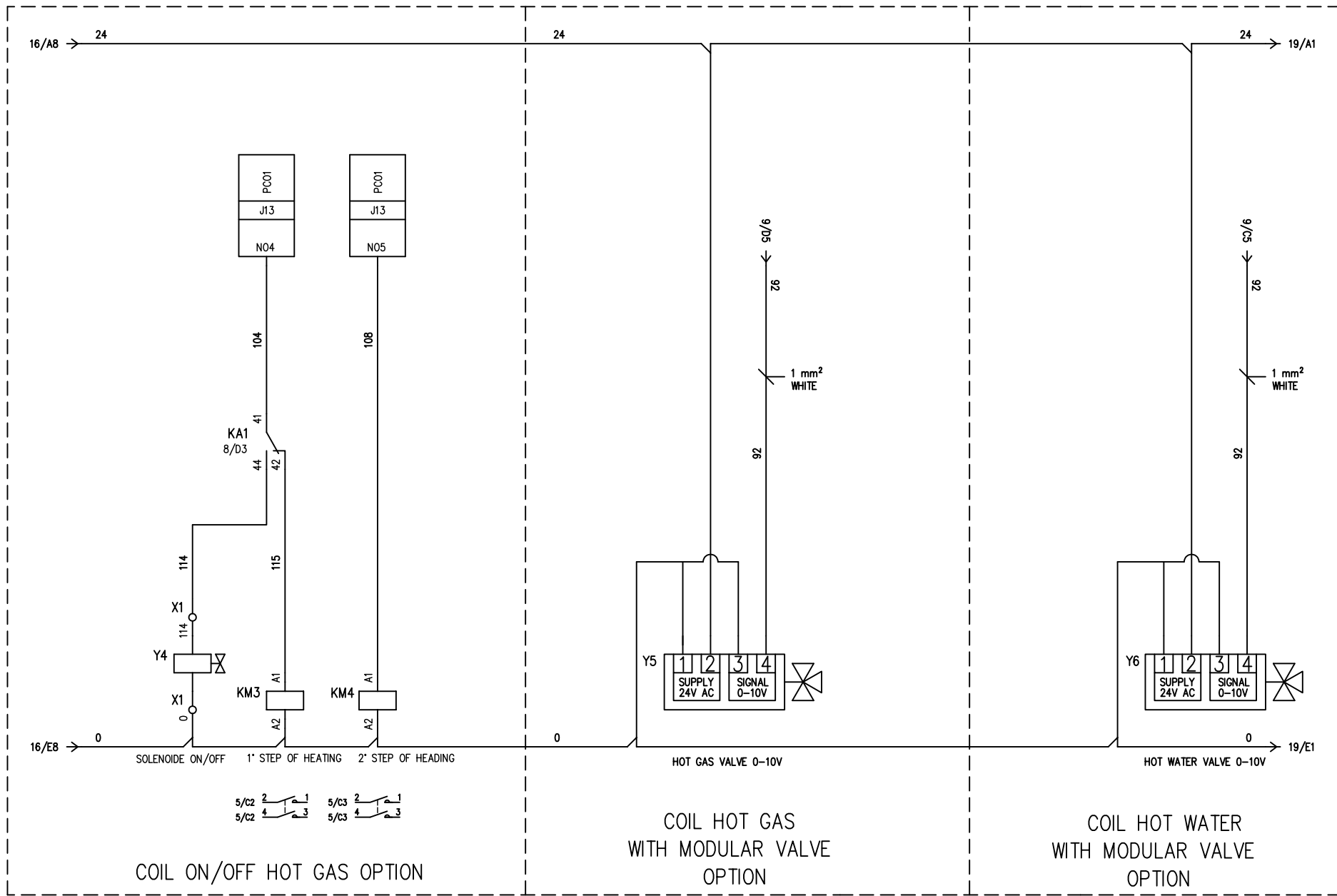




DATE	12/01/2010
DRAW.	N.C.1
CHECK	F.F.1
REV.	MODIFICATIONS
DATE	SIGN.
APPR.	M.M.



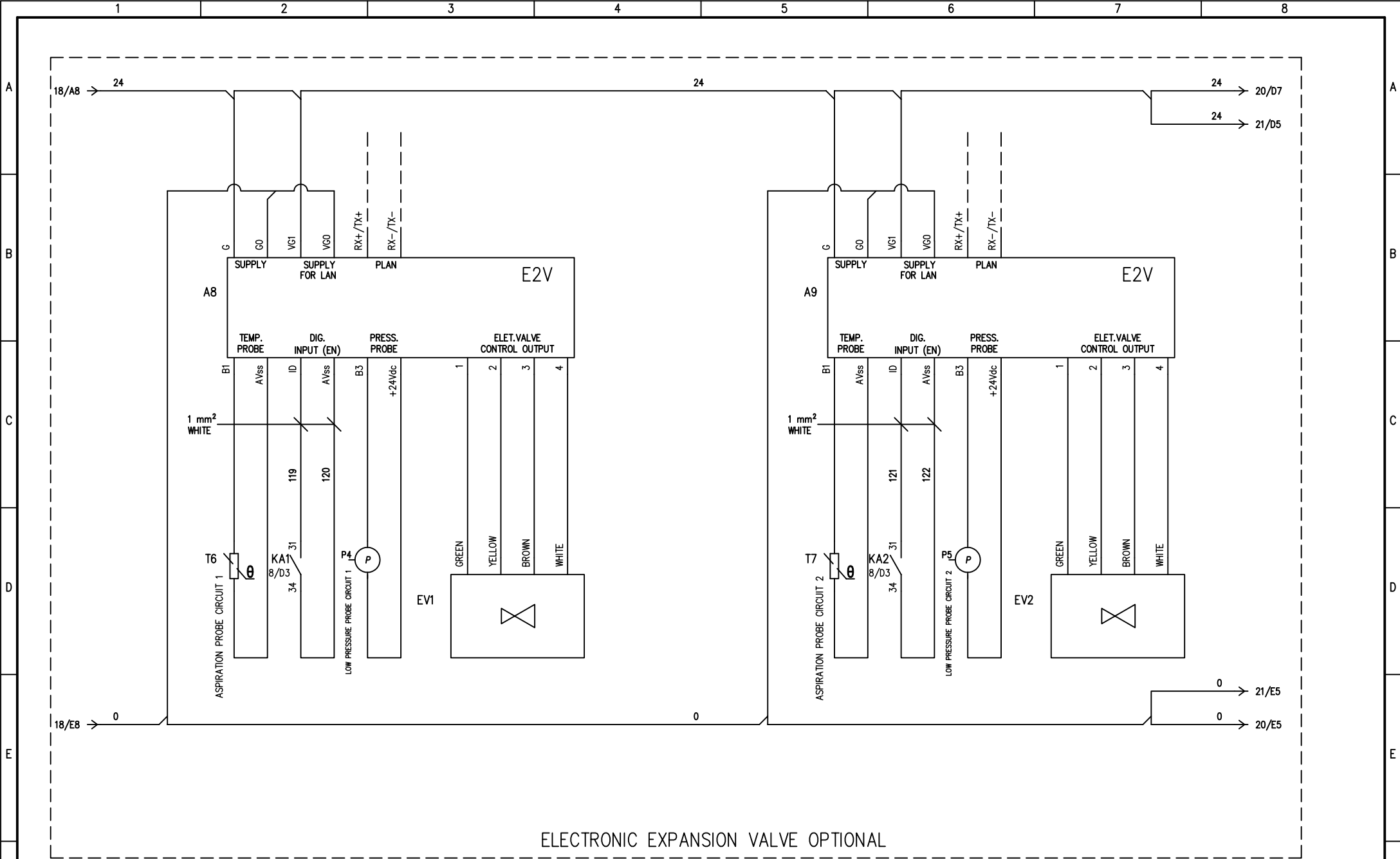
HF620C1169S



DATE	12/01/2010
DRAW.	N.C.1
CHECK	F.F.1
REV.	MODIFICATIONS
DATE	SIGN.
APPR.	M.M.



HF620C1169S



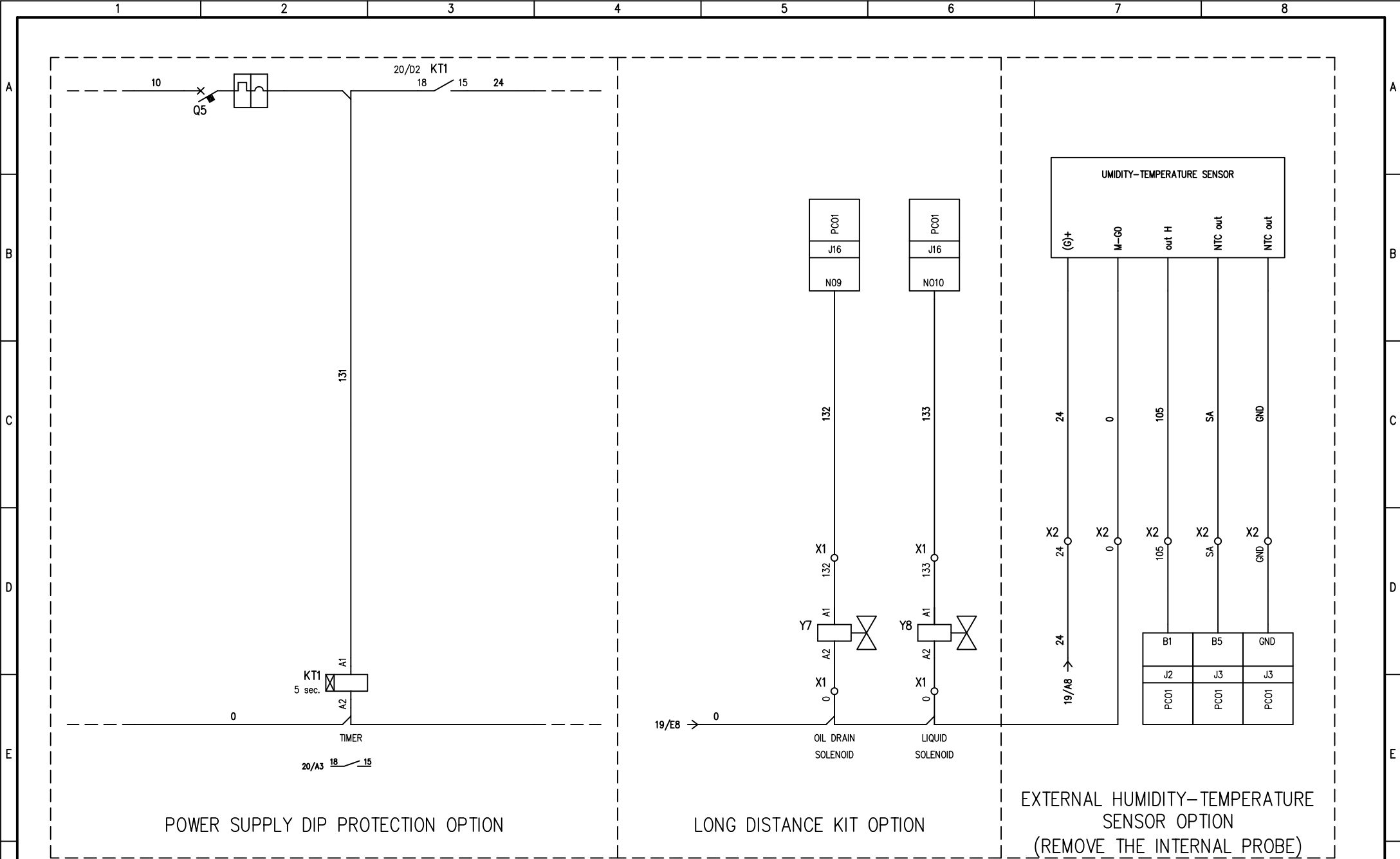
ELECTRONIC EXPANSION VALVE OPTIONAL

REV.	MODIFICATIONS	DATE	SIGN.	APPR.	M.M.

DATE	12/01/2010
DRAW.	N.C.1
CHECK	F.F.1
APPR.	M.M.



HF620C1169S



POWER SUPPLY DIP PROTECTION OPTION

LONG DISTANCE KIT OPTION

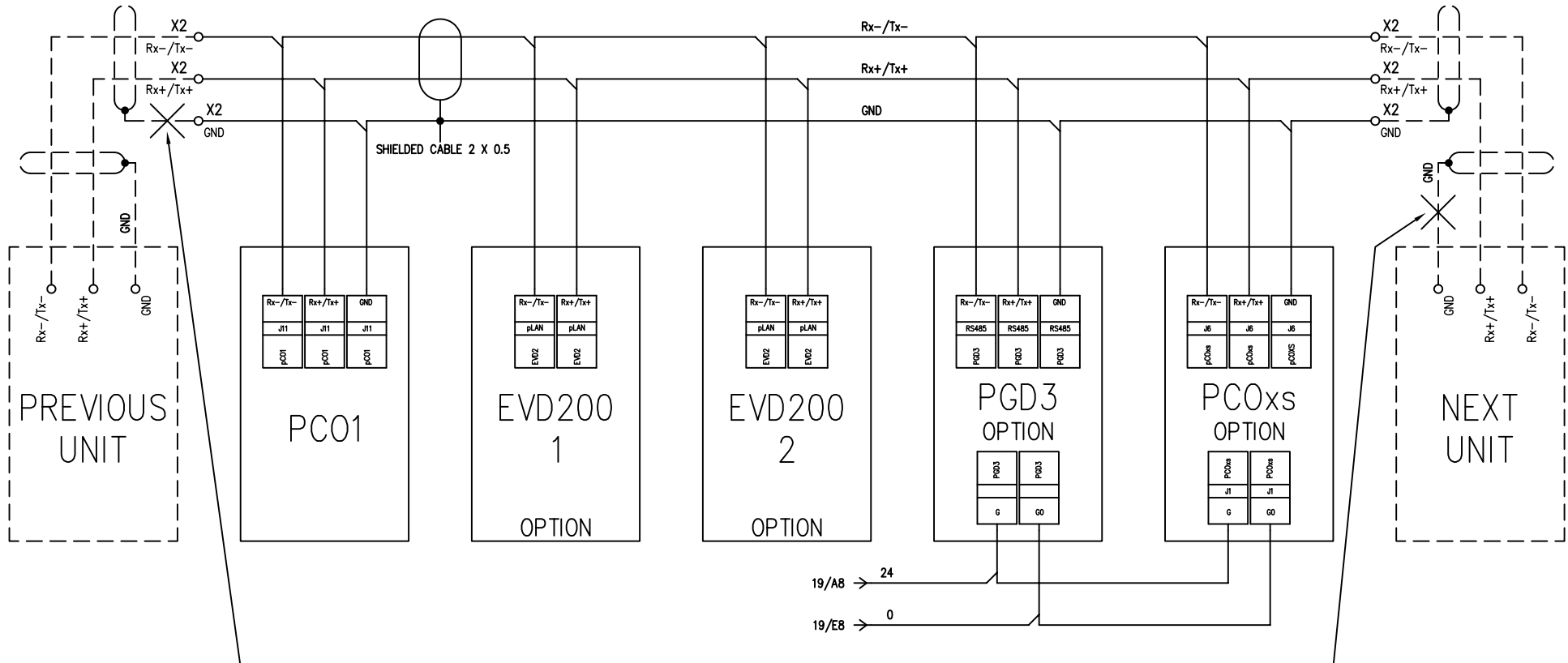
EXTERNAL HUMIDITY-TEMPERATURE SENSOR OPTION
(REMOVE THE INTERNAL PROBE)

DATE	12/01/2010
DRAW.	N.C.1
CHECK	F.F.1
REV.	MODIFICATIONS
DATE	SIGN.
APPR.	M.M.



HF620C1169S

pLAN CONNECTION



DON'T CONNECT THE SHIELD

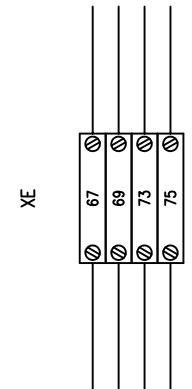
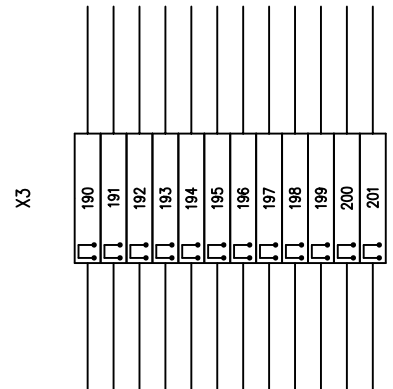
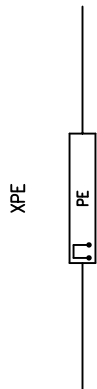
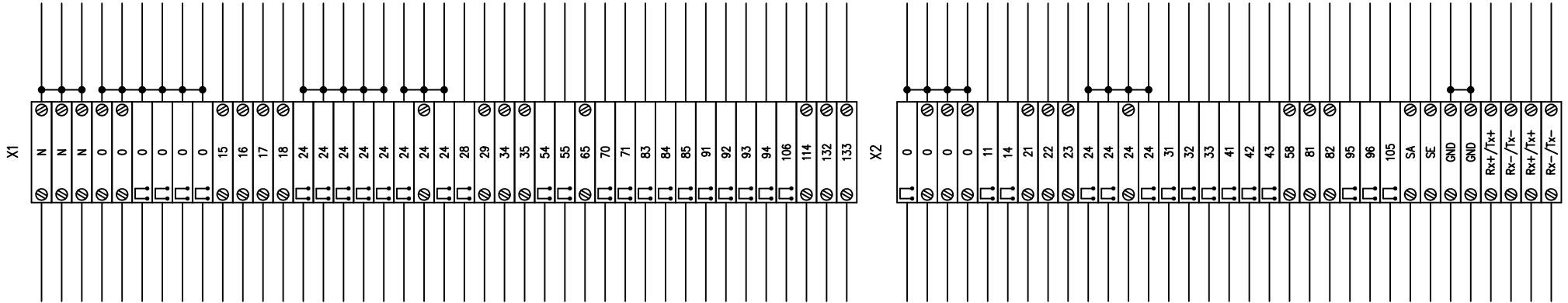
REV.	MODIFICATIONS	DATE	SIGN.	APPR.	M.M.

DATE 12/01/2010
 DRAW. N.C.1
 CHECK F.F.1



HF620C1169S

TERMINAL STRIP



REV.	MODIFICATIONS	DATE	SIGN.	APPR.	M.M.

DATE 12/01/2010

DRAW. N.C.1

CHECK F.F.1

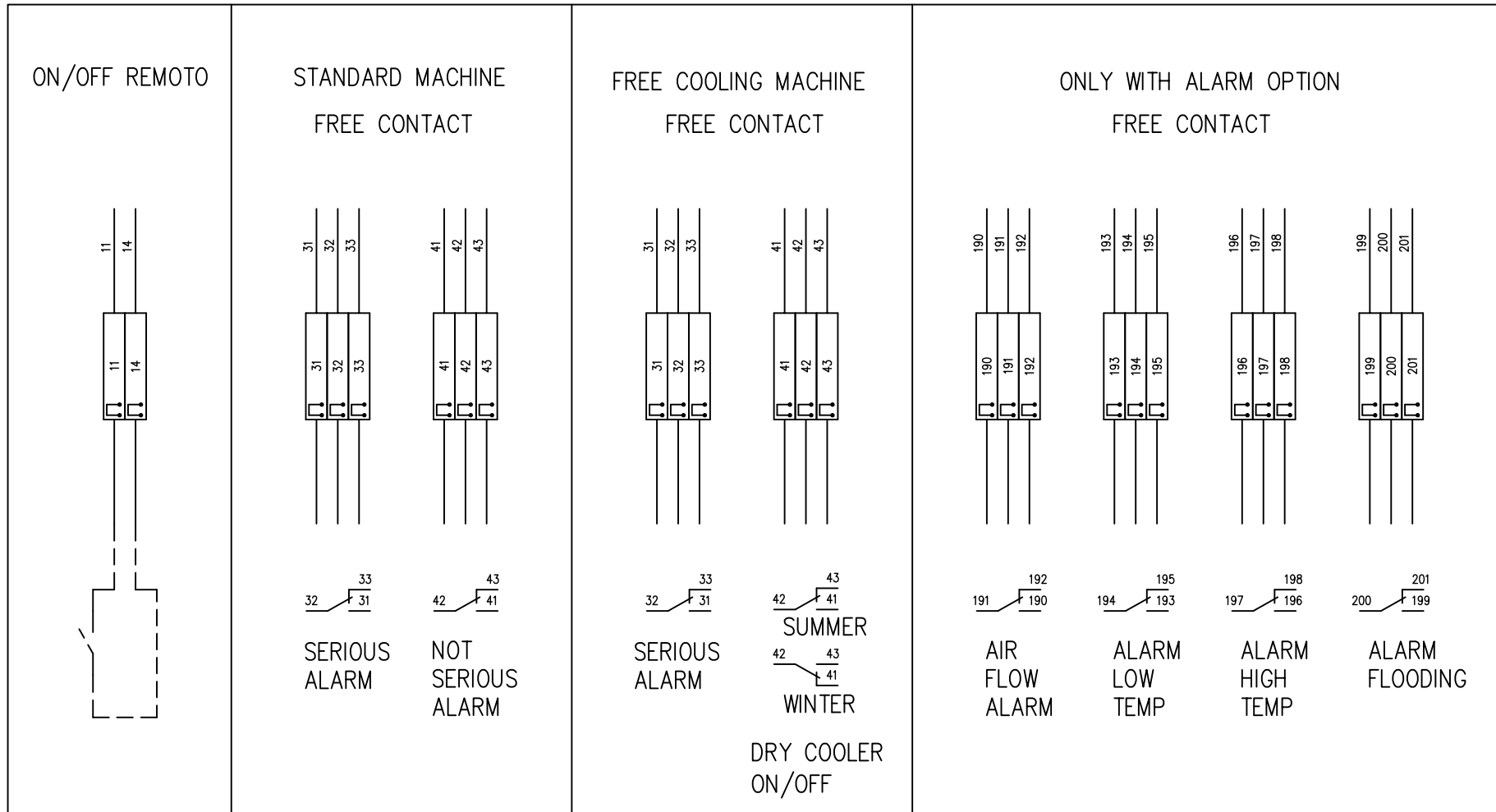


HF620C1169S

SHEET 22 OF 32

CONTINUE 23

USER CONNECTION

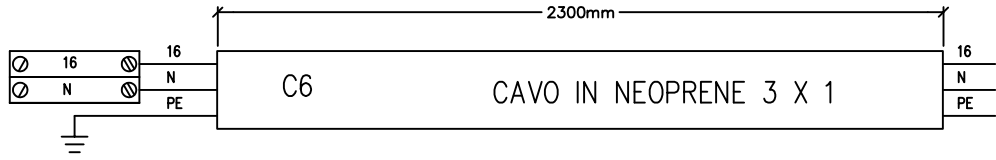
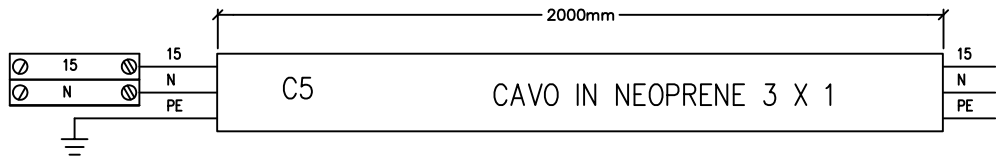
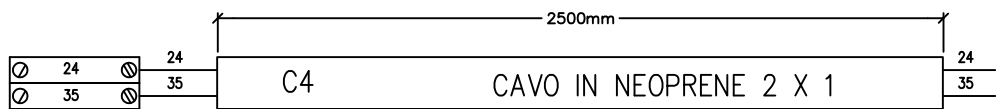
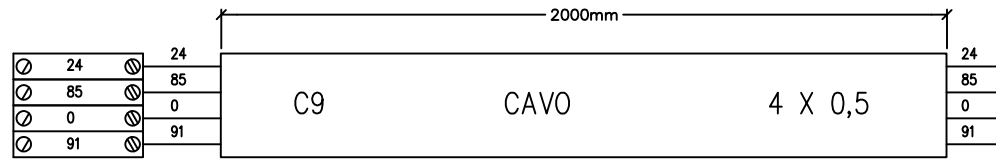
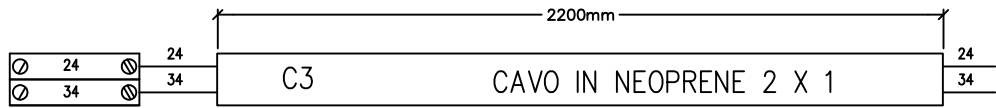
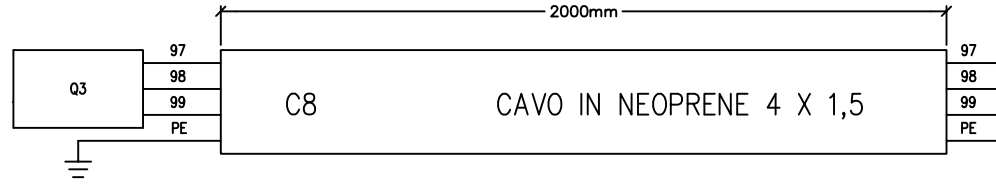
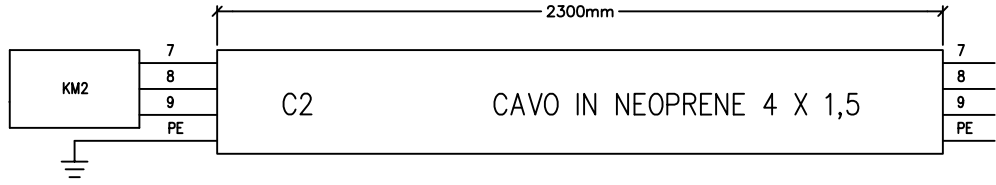
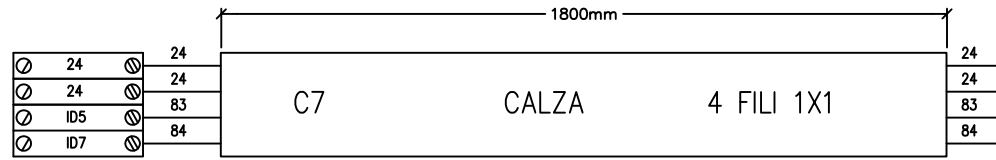
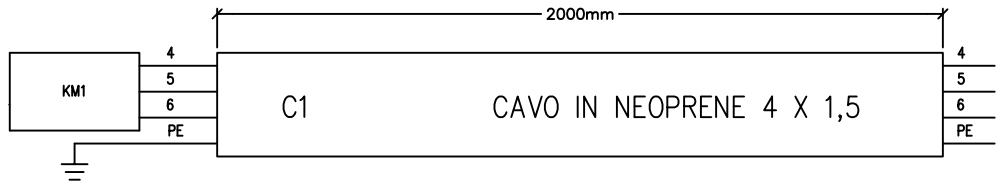


DATE	12/01/2010
DRAW.	N.C.1
CHECK	F.F.1
REV.	MODIFICATIONS
DATE	SIGN.
APPR.	M.M.



HF620C1169S

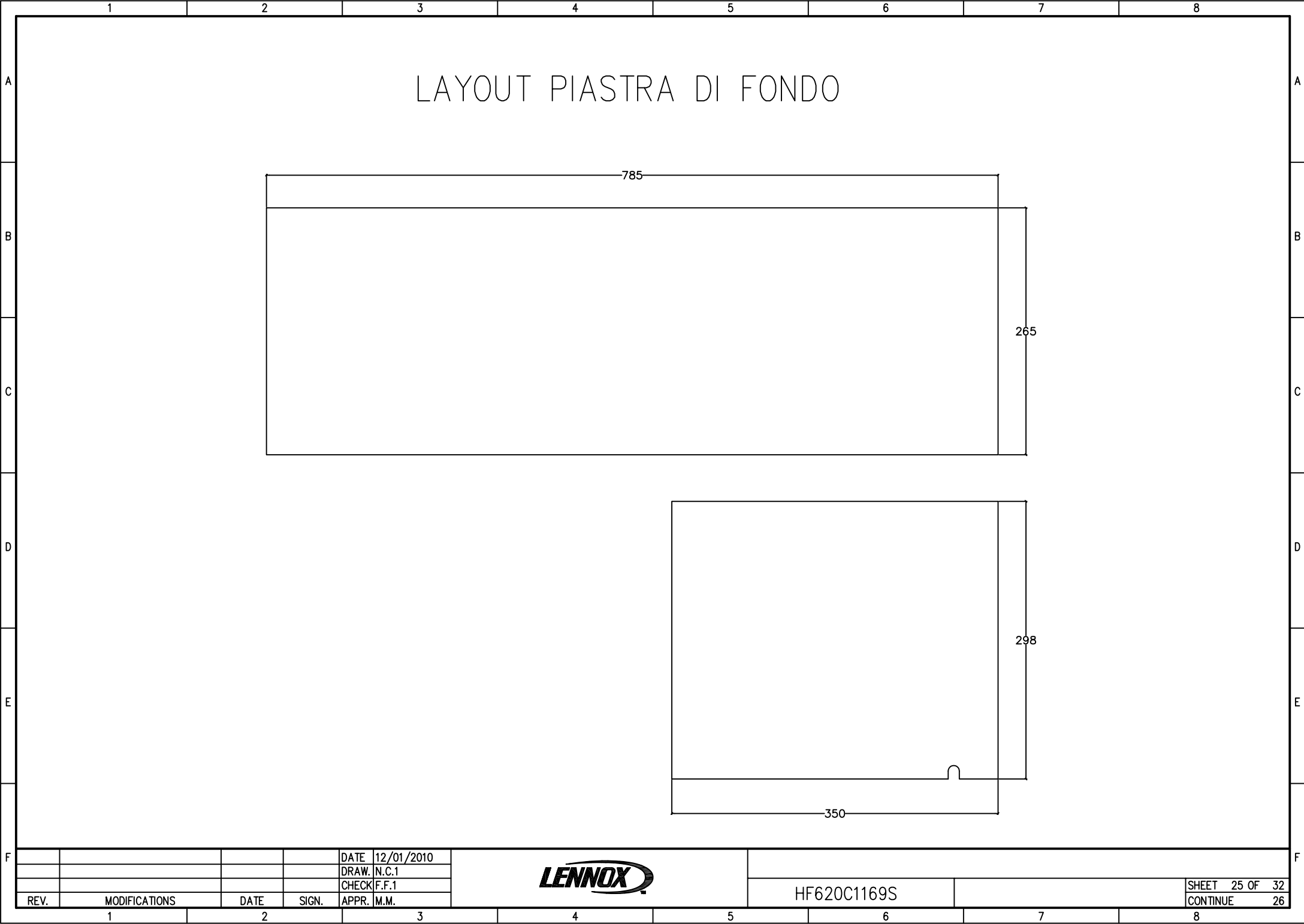
LA LUNGHEZZA DEI CAVI E' RIFERITA ALL'ESTERNO DEL QUADRO



DATE	12/01/2010
DRAW.	N.C.1
CHECK	F.F.1
REV.	MODIFICATIONS
DATE	SIGN.
APPR.	M.M.



HF620C1169S



LAYOUT PIASTRA DI FONDO

785

265

298

350

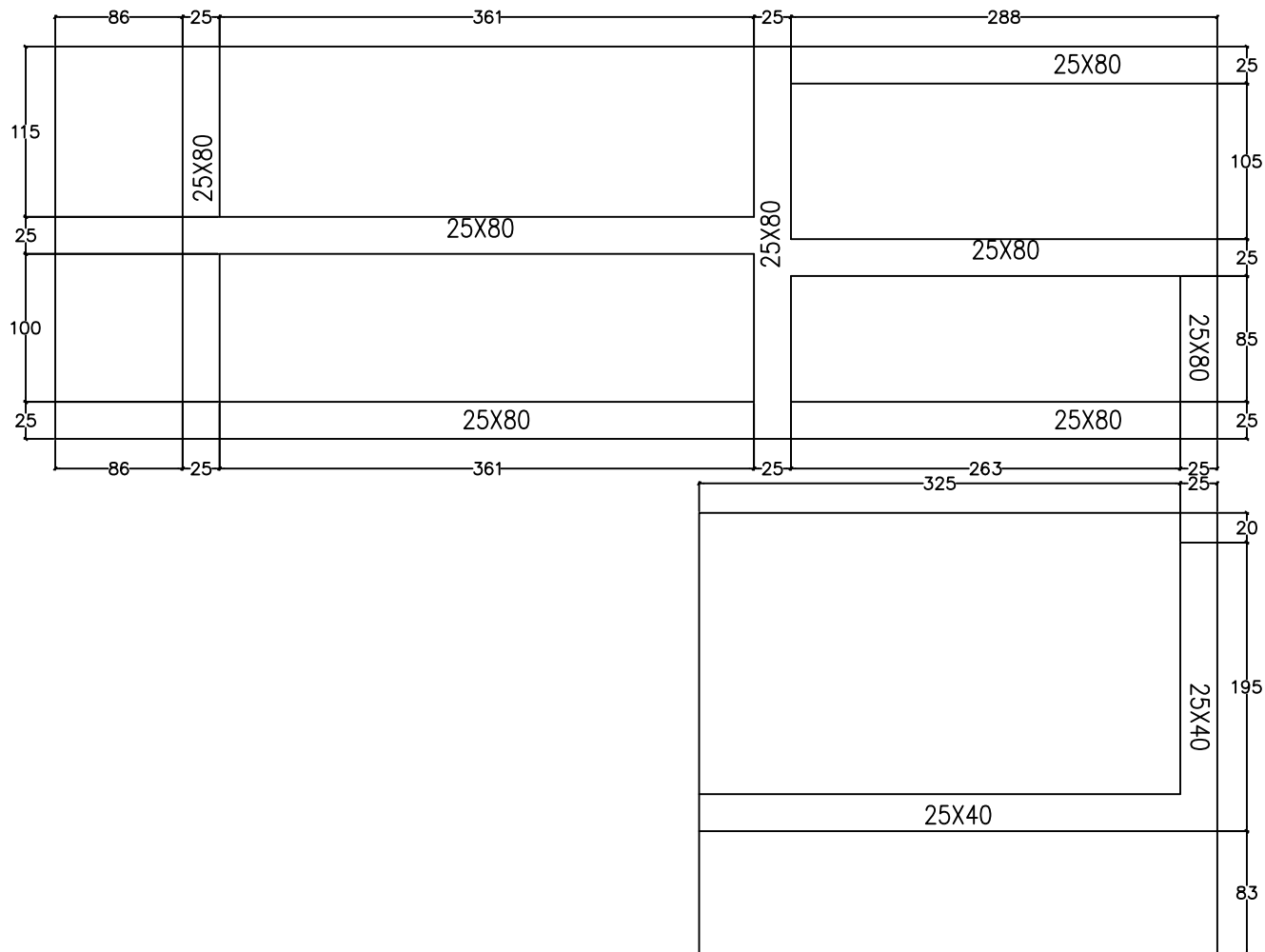
REV.	MODIFICATIONS	DATE	SIGN.	APPR.	M.M.

DATE 12/01/2010
 DRAW. N.C.1
 CHECK F.F.1



HF620C1169S

LAYOUT DISTIBUZIONE CANALINE



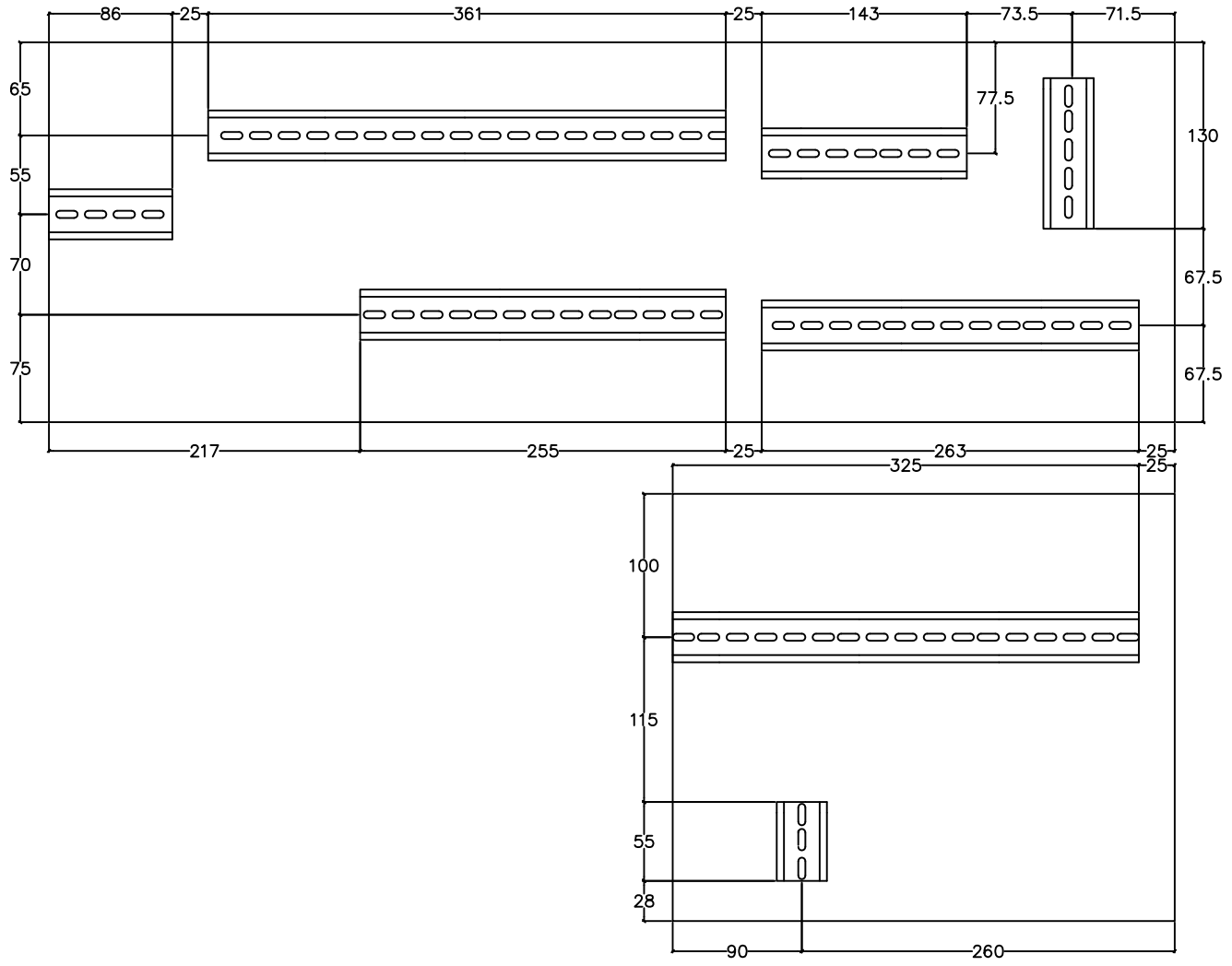
REV.	MODIFICATIONS	DATE	SIGN.	APPR.	M.M.

DATE 12/01/2010
 DRAW. N.C.1
 CHECK F.F.1



HF620C1169S

LAYOUT DISTRIBUZIONE GUIDE DIN



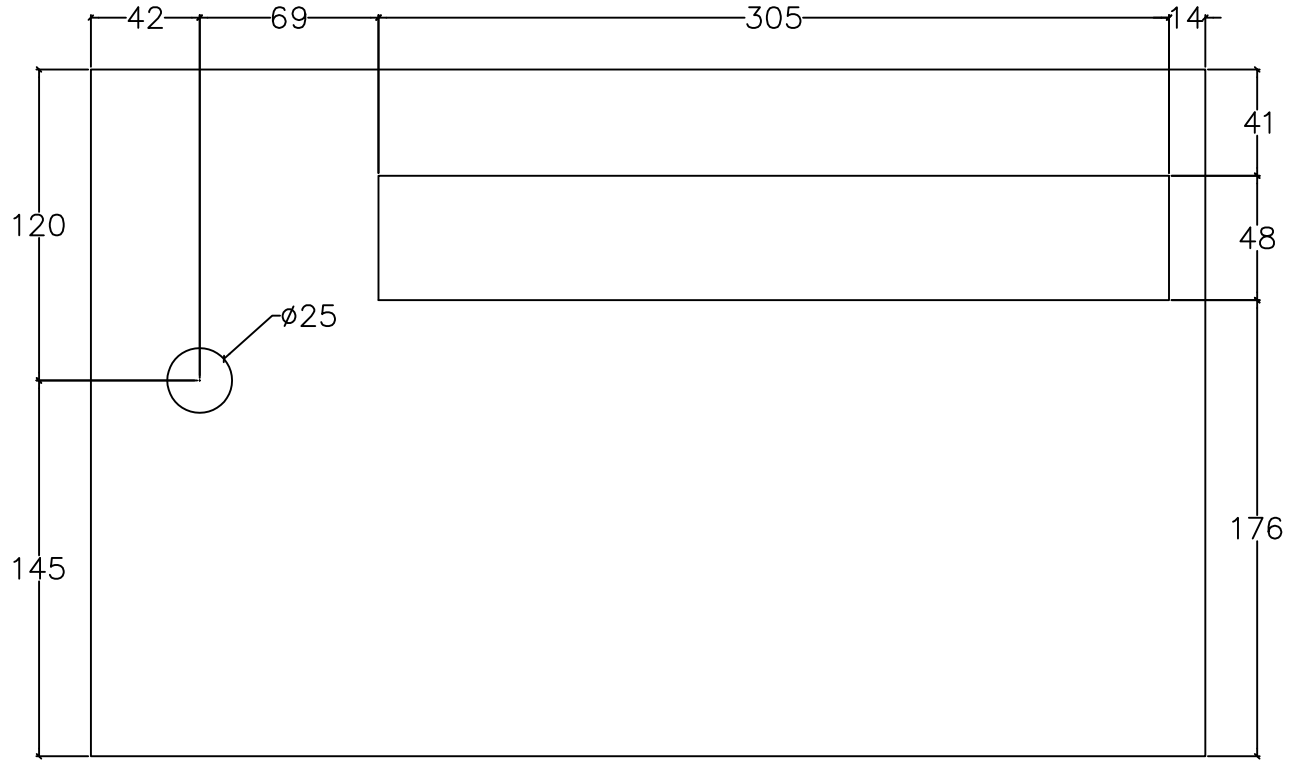
REV.	MODIFICATIONS	DATE	SIGN.	APPR.	M.M.

DATE 12/01/2010
 DRAW. N.C.1
 CHECK F.F.1



HF620C1169S

LAYOUT COPERTURA IN PLEXIGLASS



REV.	MODIFICATIONS	DATE	SIGN.	APPR.	M.M.

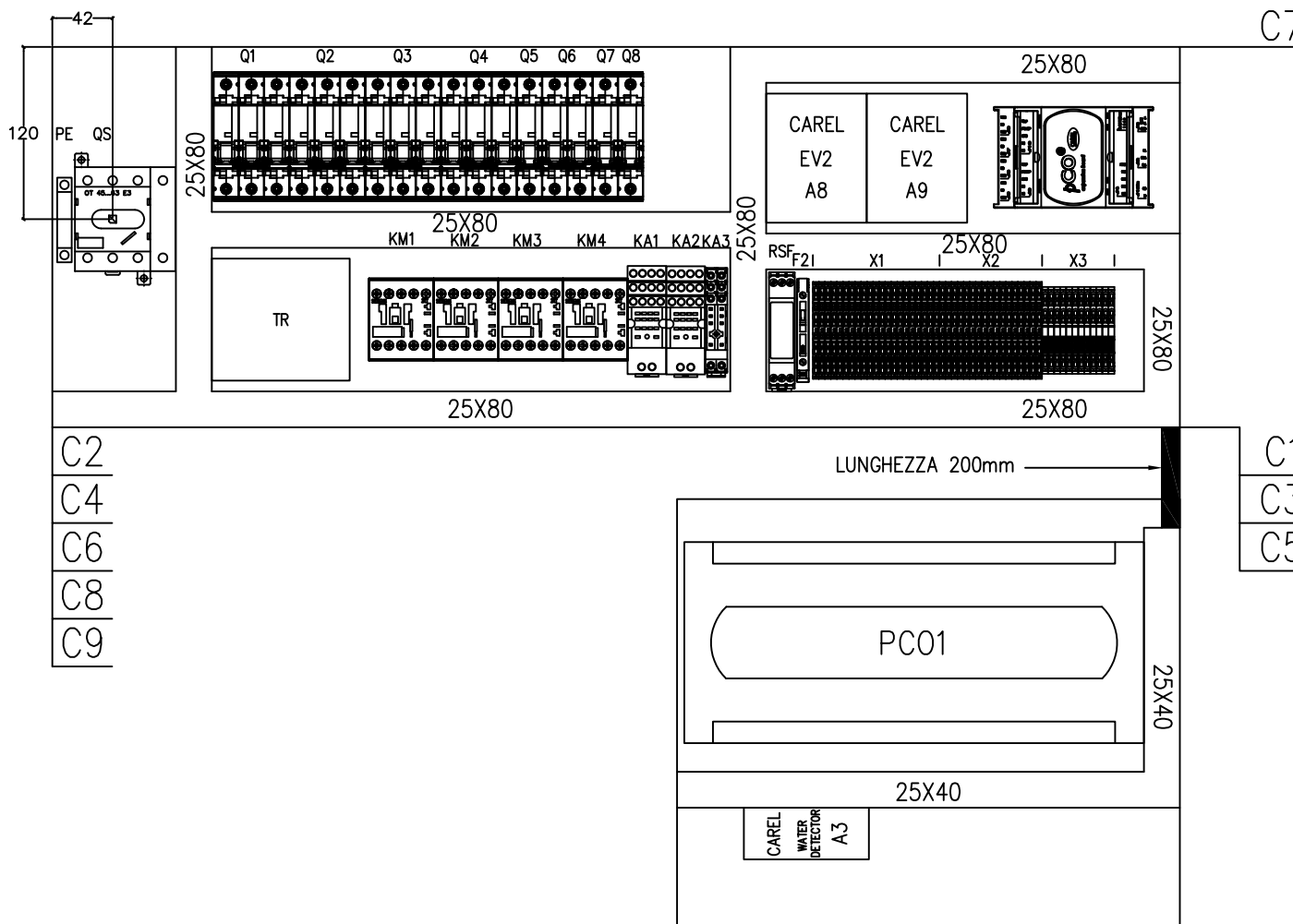
DATE	12/01/2010
DRAW.	N.C.1
CHECK	F.F.1



HF620C1169S

LAYOUT DISTRIBUZIONE DEI COMPONENTI DEL QUADRO

LA DISTANZA TRA LA PIASTRA DI FONDO E IL PLEXIGLASS NON DEVE SUPERARE GLI 80mm



DATE	12/01/2010
DRAW.	N.C.1
CHECK	F.F.1
APPR.	M.M.



HF620C1169S


DISTINTA BASE A CUI DEVE ATTENERSI IL QUADRISTA

UBICAZIONE	SIGLA	FUNZIONE	MARCA	CODICE	DESCRIZIONE	QUANTITA'	M.U.	POSIZIONE
	QS	SEZIONATORE	ABB	0T63E4+OHY3AH1+0XS5X120	SEZ. 4P In=63A + MANIGLIA + ALBERO DI COMANDO	1	PCE	
	Q1/Q2	PROTEZIONE COMPRESSORE 1/2	SIEMENS	5SY6 316-7	INT. AUT. 3P C 16A 6kA	2	PCE	
	Q3	PROTEZIONE VENTILATORE	SIEMENS	5SY6 316-7	INT. AUT. 3P C 16A 6kA	1	PCE	
	Q4	PROTEZIONE TRASFORMATORE / RSF	SIEMENS	5SY6 306-7	INT. AUT. 3P C 6A 6kA	1	PCE	
	Q5	PROTEZIONE CIRCUITO AUSILIARIO	SIEMENS	5SY6 106-7	INT. AUT. 1P C 6A 6kA	1	PCE	
	X1	MORSETTIERA	PHOENIX	3031157	MORSETTO A MOLLA GRIGIO STTB 1,5	21	PCE	
	X2	MORSETTIERA	PHOENIX	3031157	MORSETTO A MOLLA GRIGIO STTB 1,5	17	PCE	
	XPE	MORSETTO	PHOENIX	0449014	MORSETTO GIALLO VERDE USLKG35	1	PCE	
	RSF	RELE' SEQUENZA FASE	GAVAZZI	DPA51CM44	IL QUADRISTA DEVE PREDISPORRE SOLTANTO I FILI	1	PCE	
	TR	TRASFORMATORE MONOFASE	MARINI		TRASFORMATORE Vin=230V / Vout=24V S=160VA	1	PCE	
	KM1/KM2	ON/OFF COMPRESSORE 1/2	SIEMENS	3RT1017-1AB01	TELERUTTORE 5,5 KW 3P 400V BOB. 24V AC	2	PCE	
	KA1/KA2	ON/OFF COMPRESSORE 1/2	FINDER	55348024+9474+09471	RELE' + ZOCCOLO + PONTICELLO DI RITENUTA	2	PCE	
		GROUND PLATE	HIREF	HF17002296 HF17000756	PIASTRA DI FONDO	1	PCE	
		BARRA DI TERRA			BARRA DI TERRA	1	PCE	

				DATE 12/01/2010					
				DRAW. N.C.1					
				CHECK F.F.1					
REV.	MODIFICATIONS	DATE	SIGN.	APPR. M.M.		HF620C1169S			SHEET 30 OF 32 CONTINUE 31

1	2	3	4	5	6	7	8	
UBICAZIONE	SIGLA	FUNZIONE	MARCA	CODICE	DESCRIZIONE	QUANTITA'	M.U.	POSIZIONE
A		SPINE COMBICOM	PHOENIX	1757019	SPINE COMBICOM 2 POLI CON PASSO DA 5,08mm	1	PCE	A
		SPINE COMBICOM	PHOENIX	1757022	SPINE COMBICOM 3 POLI CON PASSO DA 5,08mm	6	PCE	
		SPINE COMBICOM	PHOENIX	1757035	SPINE COMBICOM 4 POLI CON PASSO DA 5,08mm	2	PCE	
B		SPINE COMBICOM	PHOENIX	1757048	SPINE COMBICOM 5 POLI CON PASSO DI 5,08mm	6	PCE	B
		SPINE COMBICOM	PHOENIX	1757051	SPINE COMBICOM 6 POLI CON PASSO DI 5,08mm	1	PCE	
		SPINE COMBICOM	PHOENIX	1757080	SPINE COMBICOM 9 POLI CON PASSO DI 5,08mm	1	PCE	



REV.	MODIFICATIONS	DATE	SIGN.	APPR.	M.M.		HF620C1169S	SHEET 31 OF 32
								CONTINUE 32

OPZIONE RESISTENZE

UBICAZIONE	SIGLA	FUNZIONE	MARCA	CODICE	DESCRIZIONE	QUANTITA'	M.U.	POSIZIONE
	Q6	PROTEZIONE RESISTENZE	SIEMENS	5SY6220-7/HF40000733	INT. AUT. 2P C20A 6KA	1	PCE	
	KM3	ON/OFF RESISTENZE 1' STEP	SIEMENS	3RT1017-1AB01/HF40000747	TELERUTTORE 5,5KW 3P 400V BOB. 24V AC	1	PCE	
	KM4	ON/OFF RESISTENZE 2'STEP	SIEMENS	3RT1017-1AB01/HF40000747	TELERUTTORE 5,5KW 3P 400V BOB. 24V AC	1	PCE	

OPZIONE CONTROLLO CONDENSAZIONE MONOCIRCUITO

UBICAZIONE	SIGLA	FUNZIONE	MARCA	CODICE	DESCRIZIONE	QUANTITA'	M.U.	POSIZIONE
	Q7	PROTEZIONE REGOLATORE DI GIRI	SIEMENS	5SY6116-7/HF40000796	INT. AUT. 1P C16A 6KA	1	PCE	
	Q8	PROTEZIONE REGOLATORE DI GIRI	SIEMENS	5SY6116-7/HF40000796	INT. AUT. 1P C16A 6KA	1	PCE	

OPZIONE CONTROLLO CONDENSAZIONE BICIRCUITO

UBICAZIONE	SIGLA	FUNZIONE	MARCA	CODICE	DESCRIZIONE	QUANTITA'	M.U.	POSIZIONE
	Q7	PROTEZIONE REGOLATORE DI GIRI	SIEMENS	5SY6116-7/HF40000796	INT. AUT. 1P C16A 6KA	1	PCE	

OPZIONE POMPA SCARICO CONDENSA

UBICAZIONE	SIGLA	FUNZIONE	MARCA	CODICE	DESCRIZIONE	QUANTITA'	M.U.	POSIZIONE
	F1	PROTEZIONE POMPA SCARICO CONDENSA	ITALWEBER	0101001/HF40000777	FUSIBILE IN VETRO 5 X 20 In= 1A	1	PCE	
	F	MORSETTO PORTA FUSIBILE	PHOENIX	3004100/HF40000756	PER FUSIBILI TIPO G 5 X 20	1	PCE	