



Serie	DHAD-U-XC/R
Model	60 - 80

Drawing code	HF620C0923	Controller	PC01
--------------	------------	------------	------

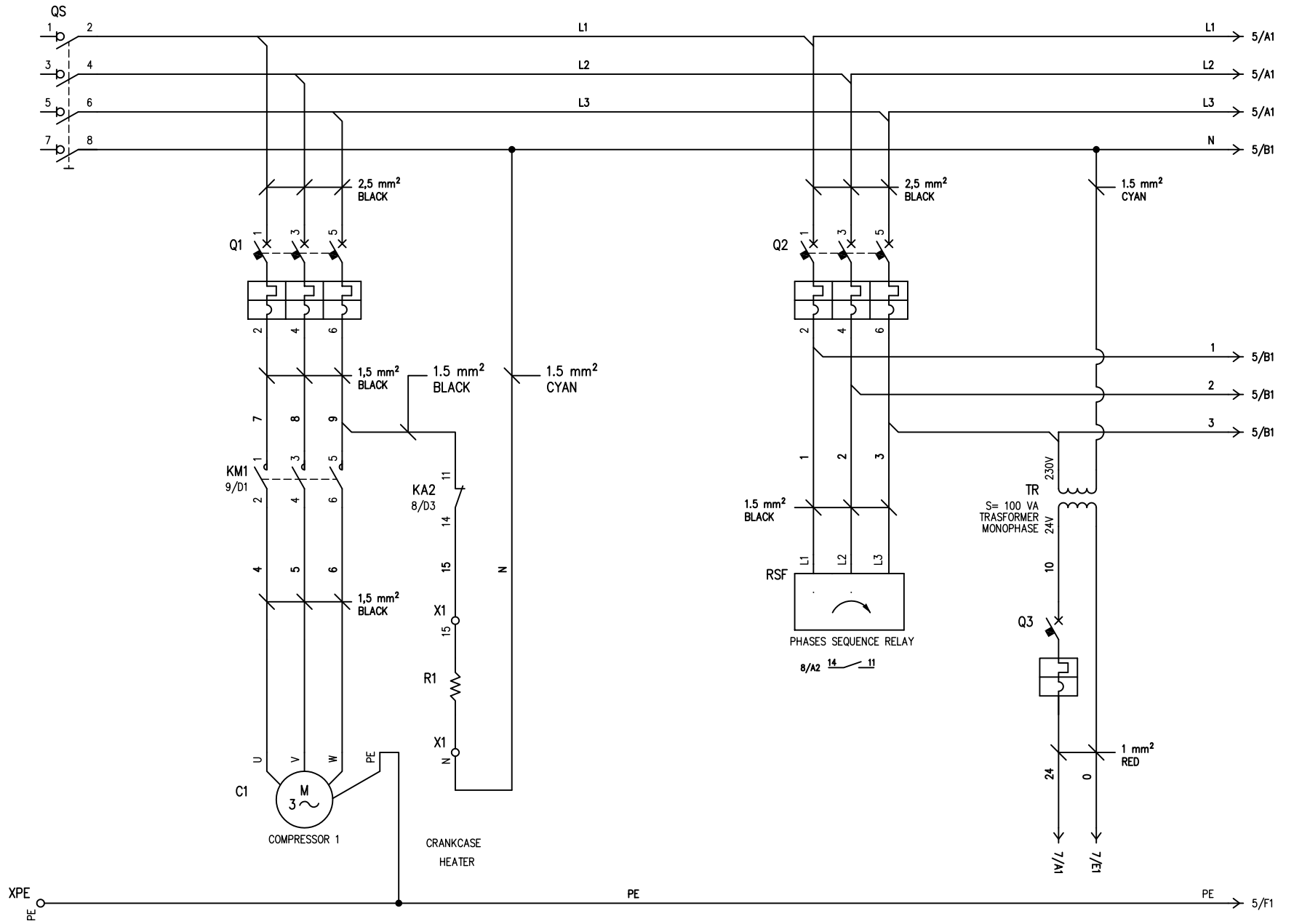
Power supply	400V/3~/50Hz + N	-
Auxiliary supply	24VAC	-

Created by	N.C.1	Revision by	-	Index	-
Date	27/10/2008	On	-		

Max power (kW)	SEE TABLE ON PAGE 2-3
FLA (A)	SEE TABLE ON PAGE 2-3
RLA (A)	SEE TABLE ON PAGE 2-3

Main protection	SEE TABLE ON PAGE 2-3
-----------------	-----------------------

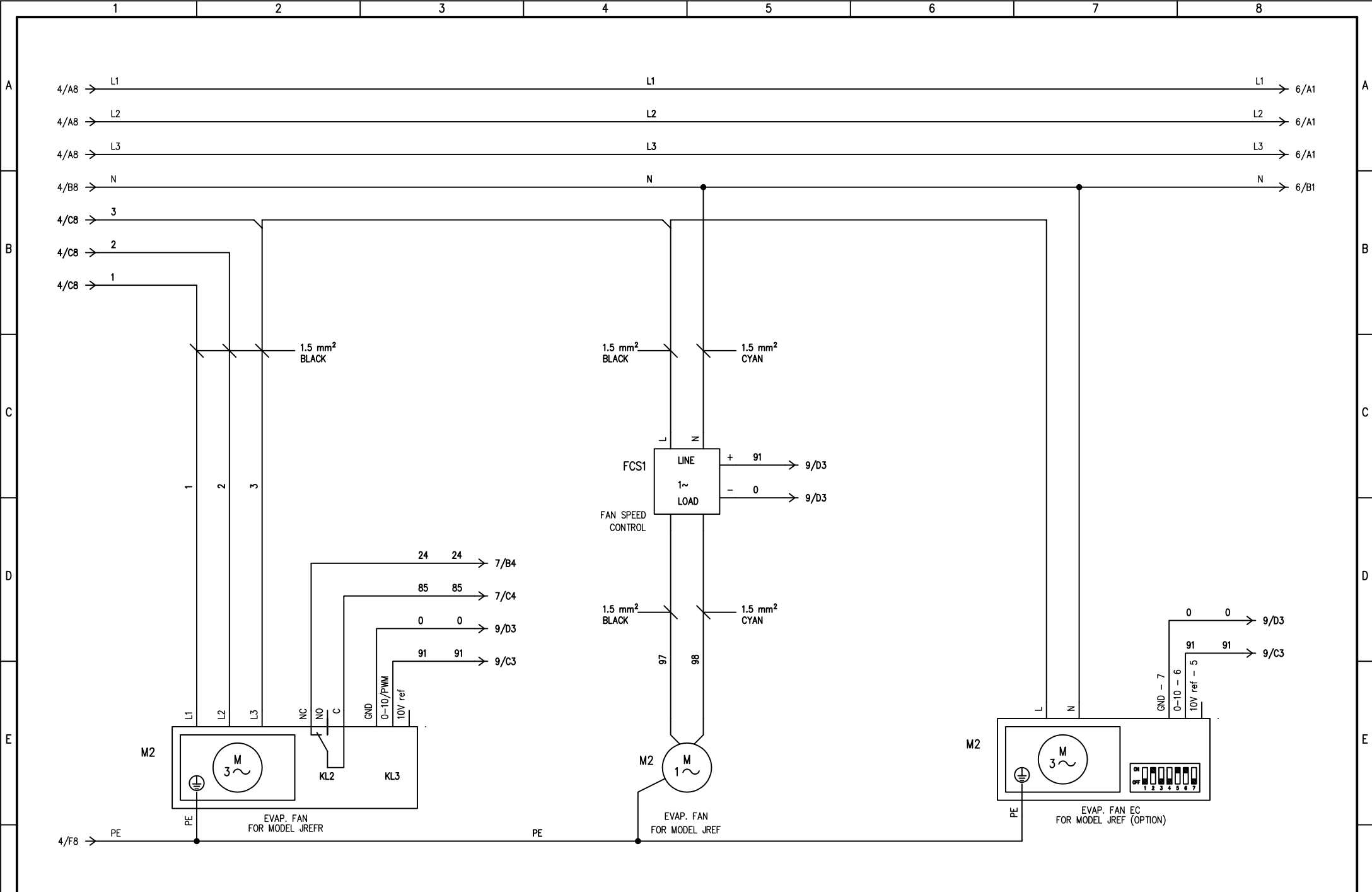
POWER SUPPLY
400/3~/50Hz + N



DATE	27/10/2008
DRAW.	N.C.1
CHECK	F.F.1
APPR.	M.M.



HF620C0923

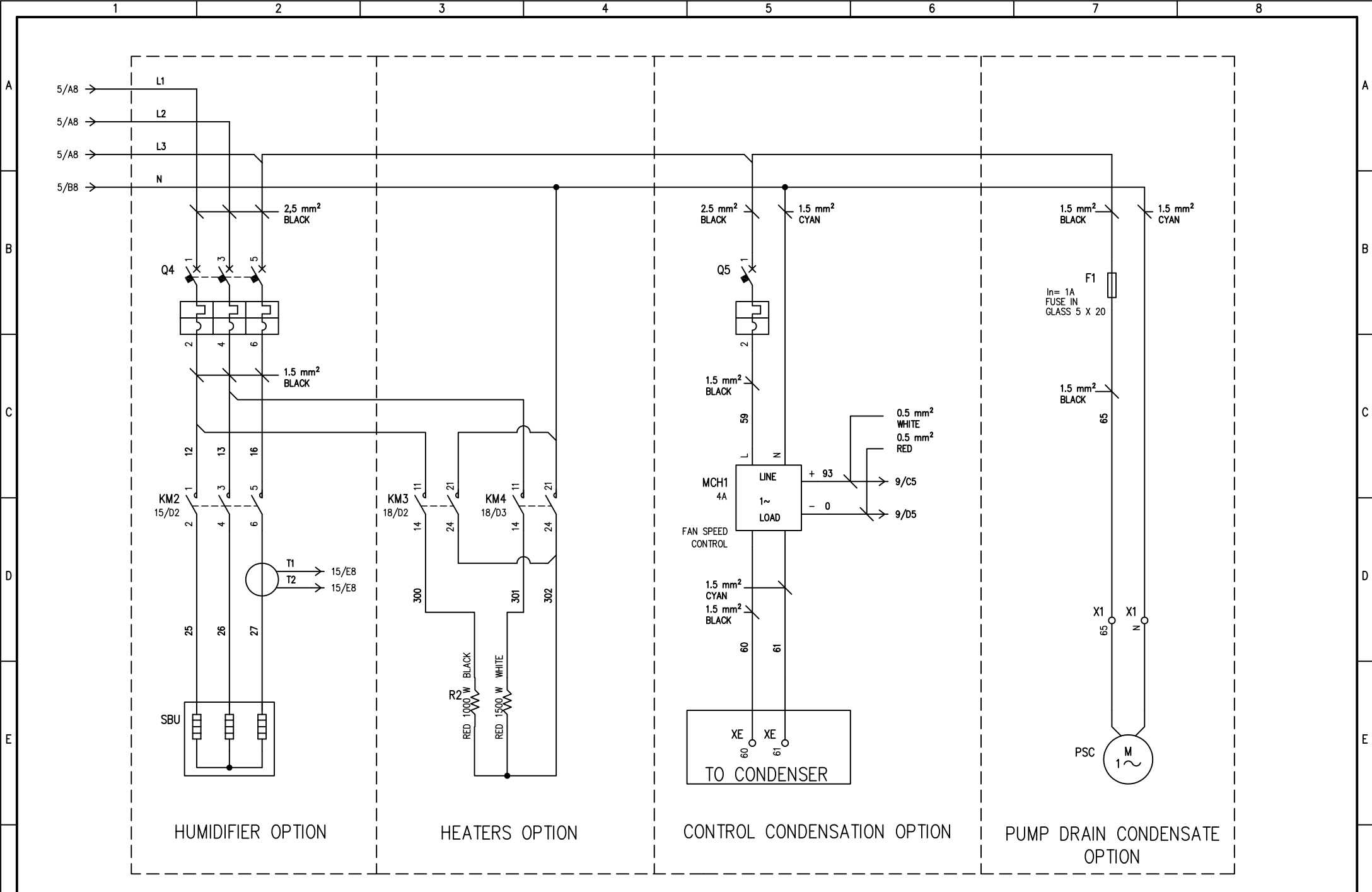


REV.	MODIFICATIONS	DATE	SIGN.	APPR.	M.M.

DATE 27/10/2008
 DRAW. N.C.1
 CHECK F.F.1
 APPR. M.M.



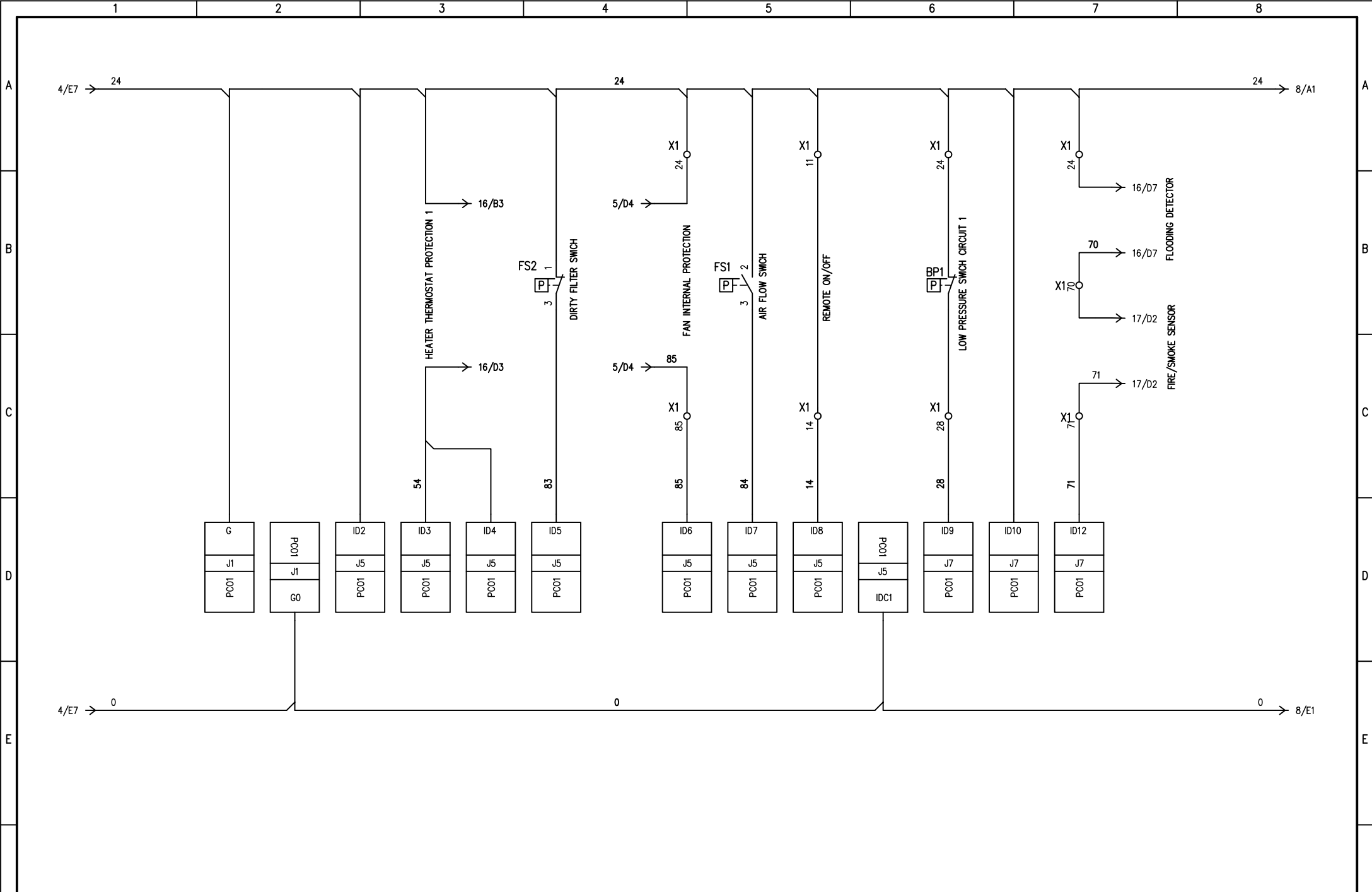
HF620C0923



DATE	27/10/2008
DRAW.	N.C.1
CHECK	F.F.1
REV.	MODIFICATIONS
DATE	SIGN.
APPR.	M.M.



HF620C0923

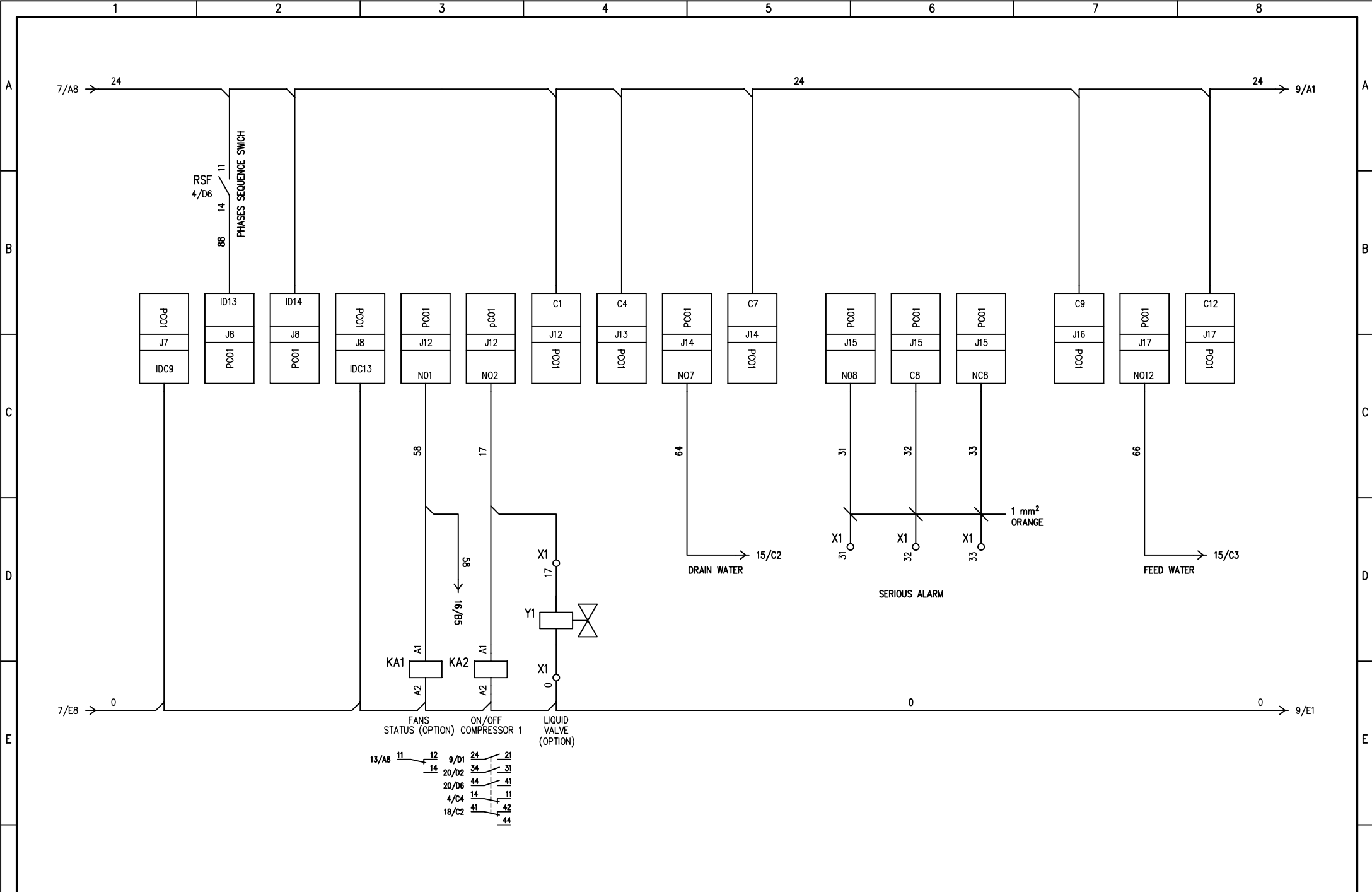


REV.	MODIFICATIONS	DATE	SIGN.	APPR.	M.M.

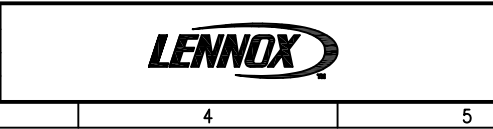
DATE 27/10/2008
 DRAW. N.C.1
 CHECK F.F.1
 APPR. M.M.

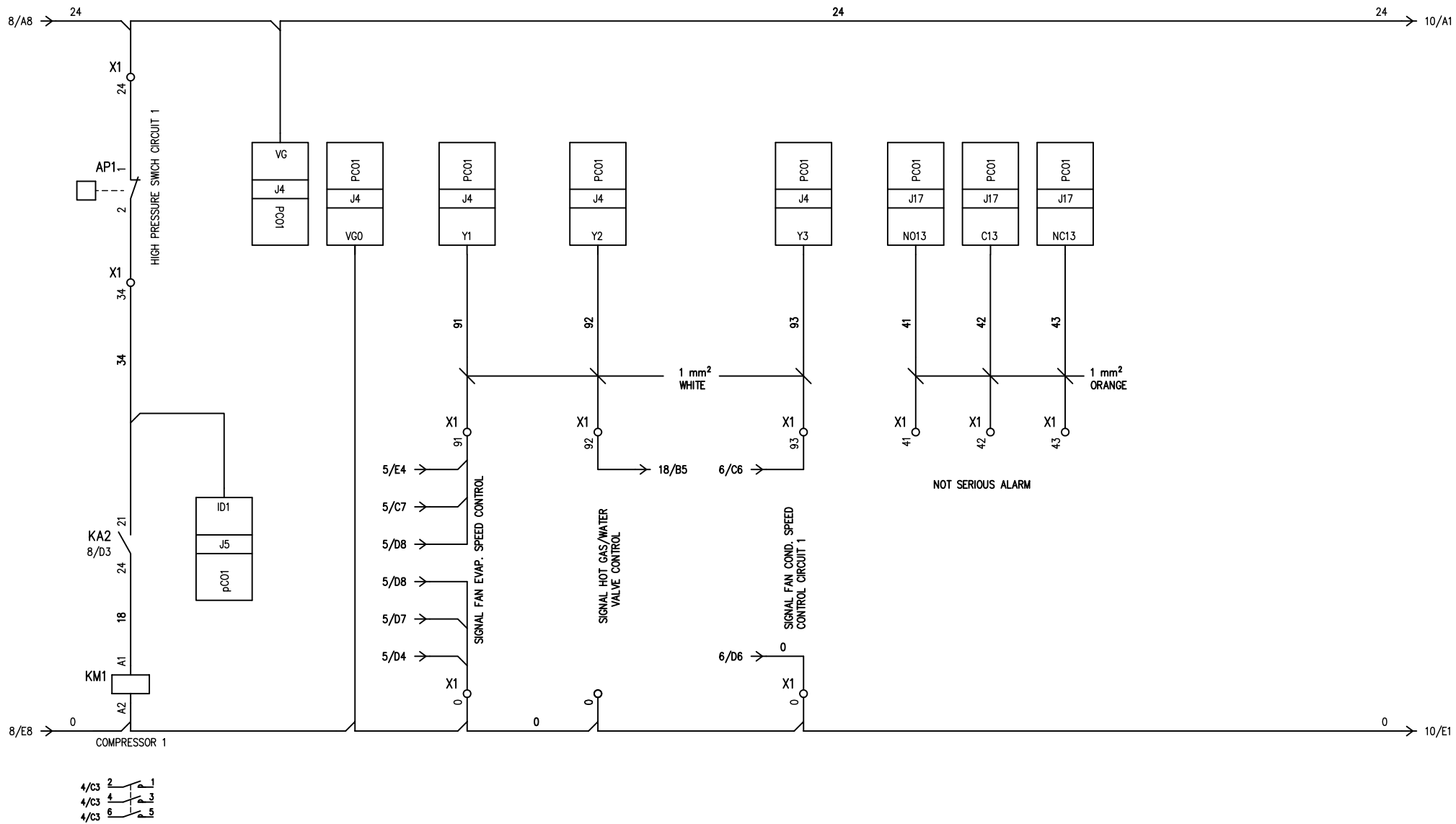


HF620C0923



DATE	27/10/2008
DRAW.	N.C.1
CHECK	F.F.1
REV.	MODIFICATIONS
DATE	SIGN.
APPR.	M.M.



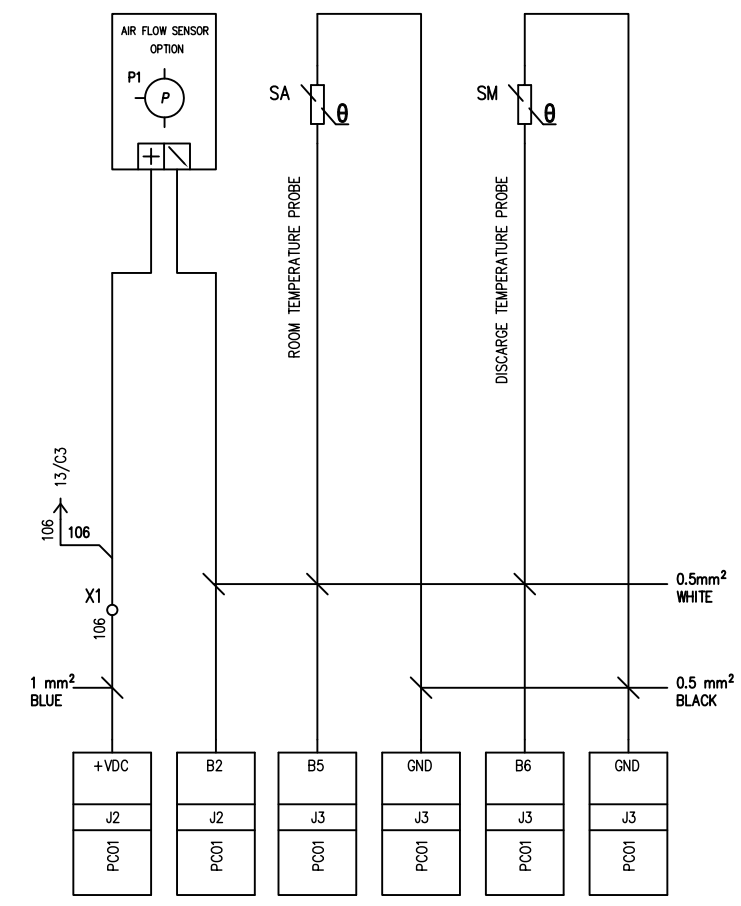
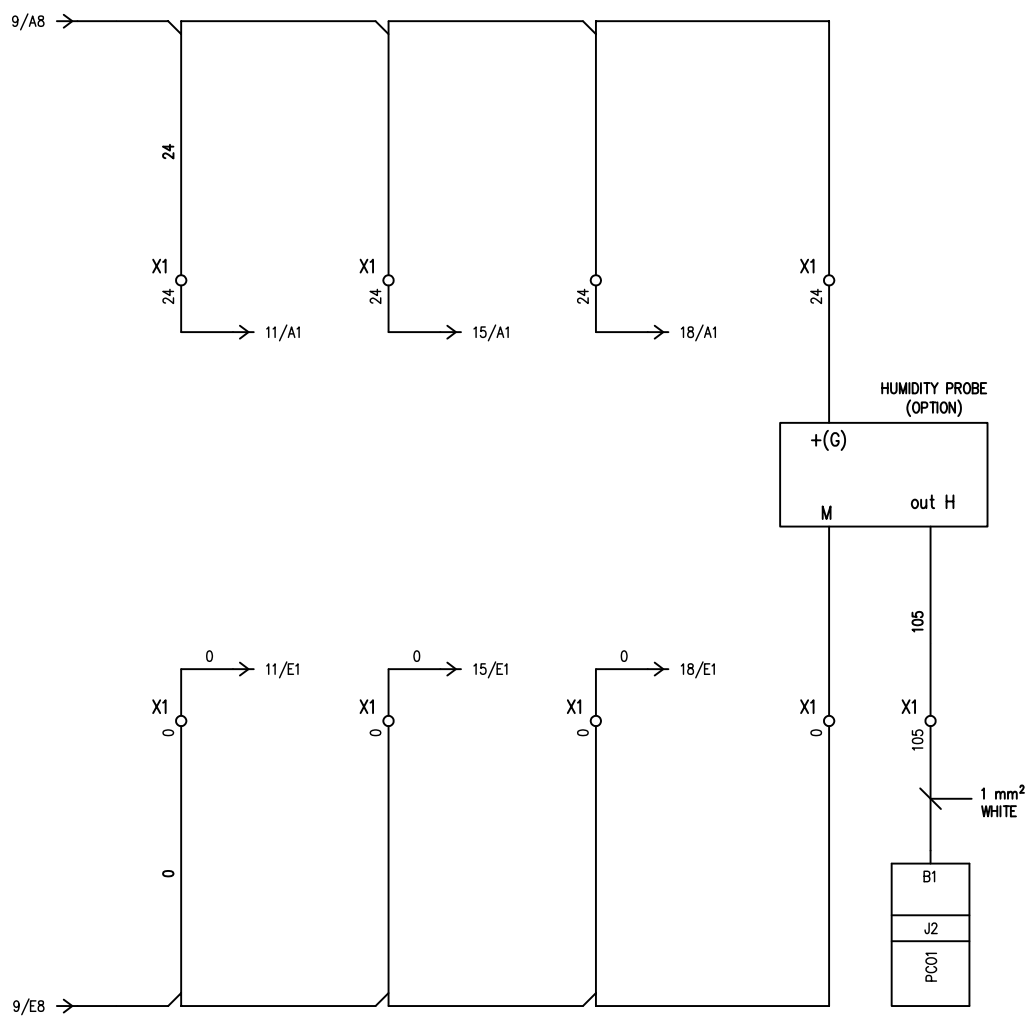


REV.	MODIFICATIONS	DATE	SIGN.	APPR.	M.M.

DATE 27/10/2008
 DRAW. N.C.1
 CHECK F.F.1
 APPR. M.M.



HF620C0923

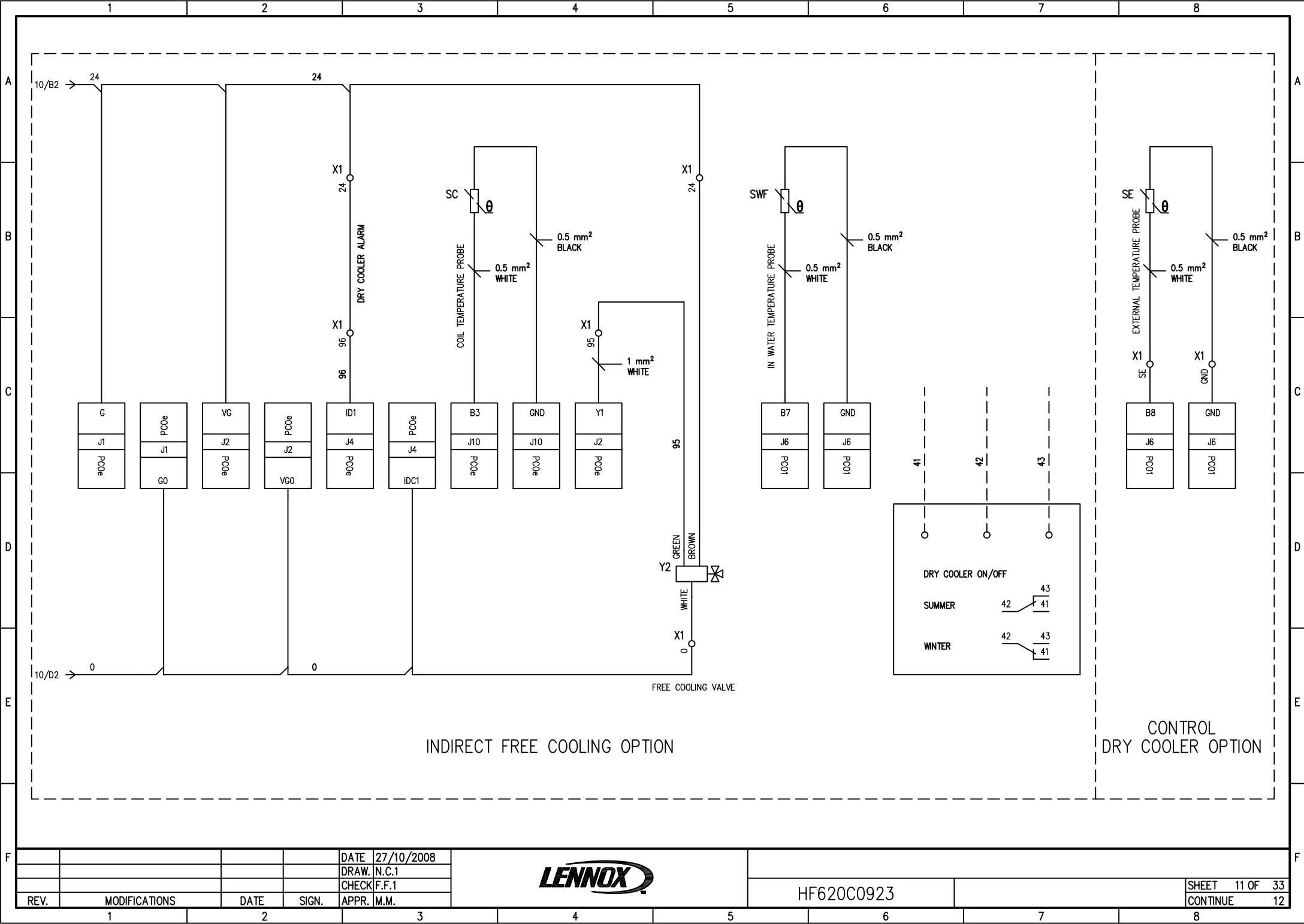


REV.	MODIFICATIONS	DATE	SIGN.	APPR.	M.M.

DATE 27/10/2008
 DRAW. N.C.1
 CHECK F.F.1



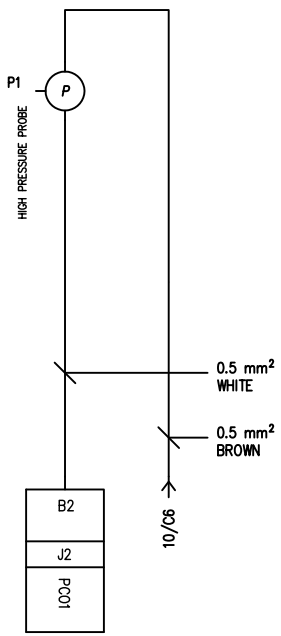
HF620C0923



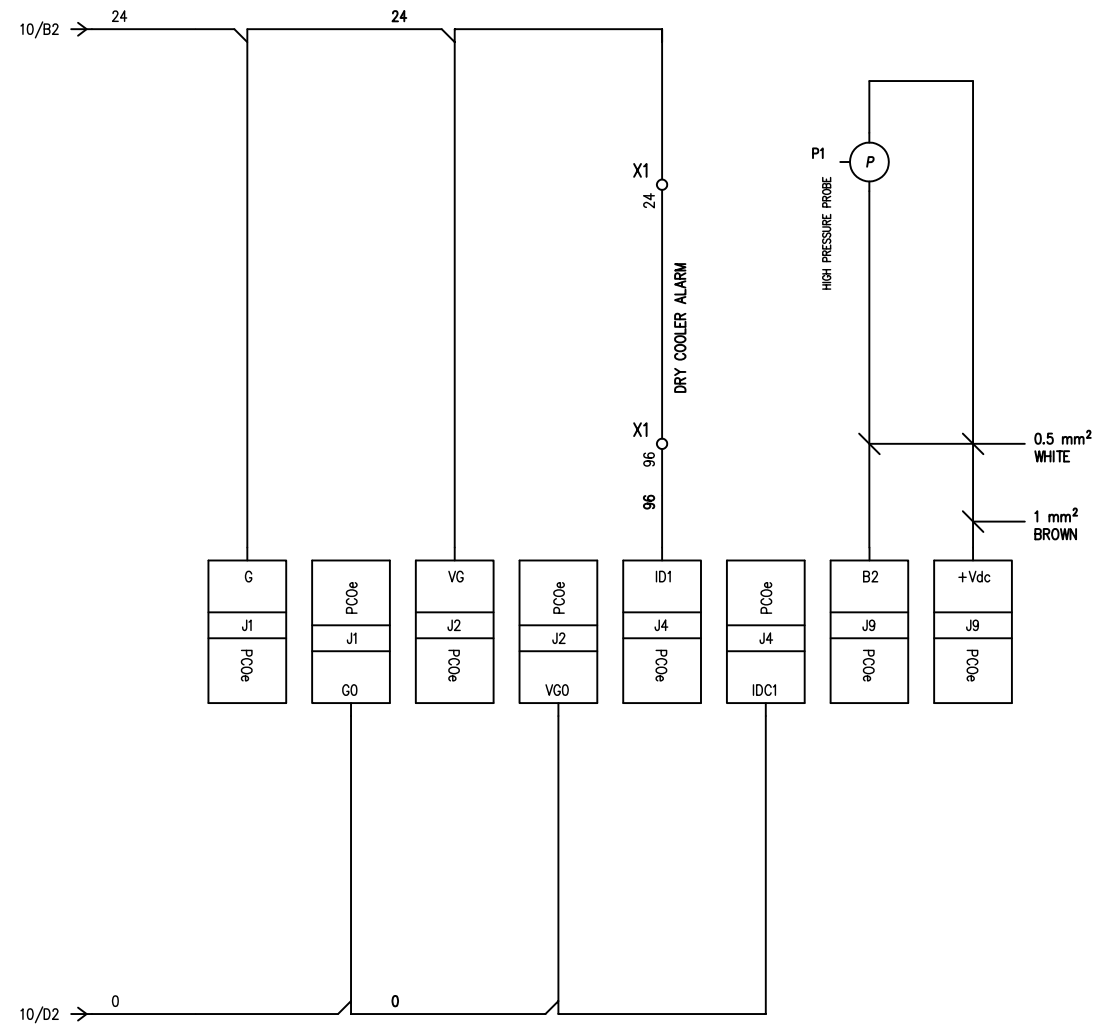
DATE	27/10/2008
DRAW.	N.C.1
CHECK	F.F.1
REV.	MODIFICATIONS
DATE	SIGN.
APPR.	M.M.



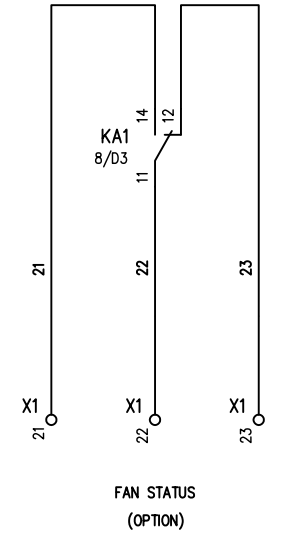
HF620C0923



CONDENSATION CONTROL OPTION
WITHOUT AIR FLOW CONTROL



CONTROL CONDENSATION OPTION WITH AIR
FLOW CONTROL



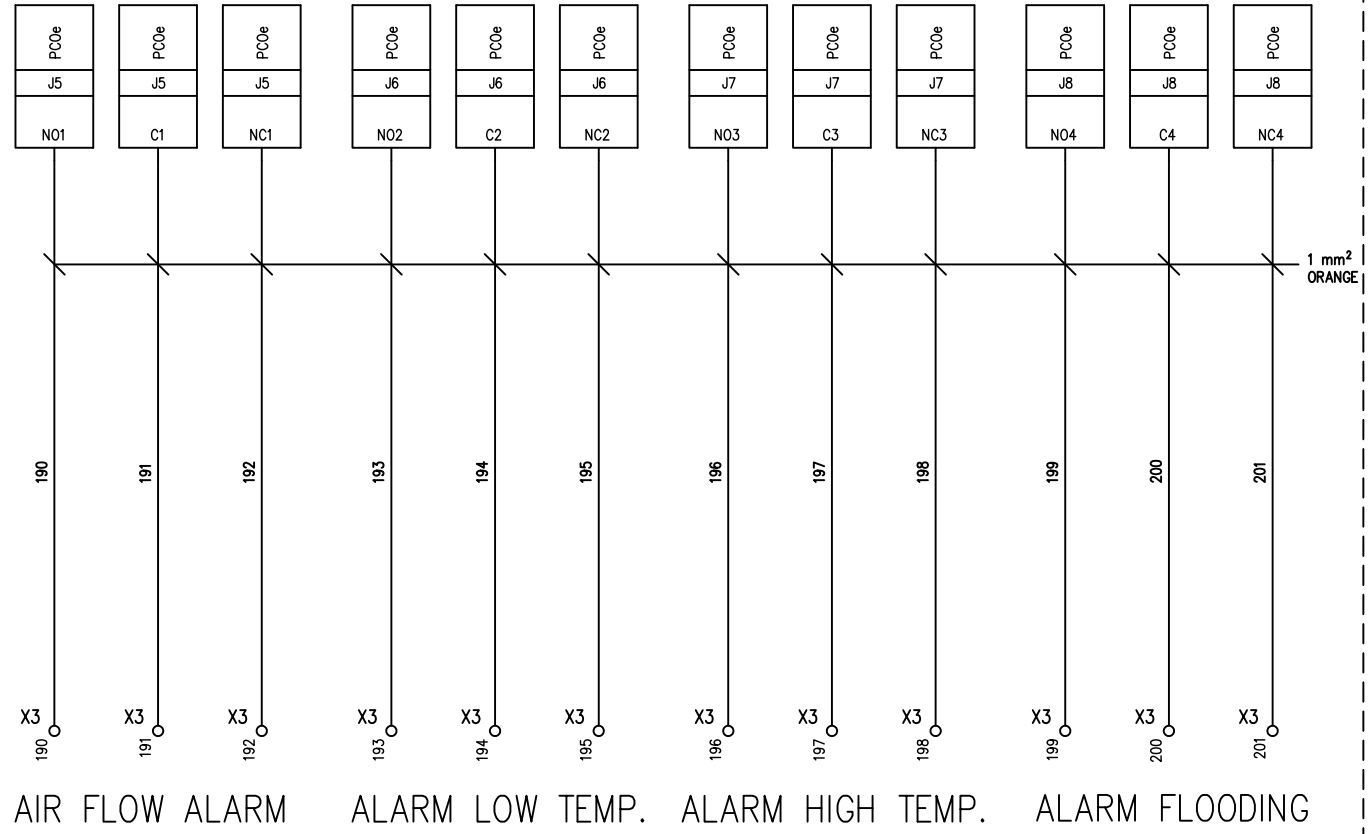
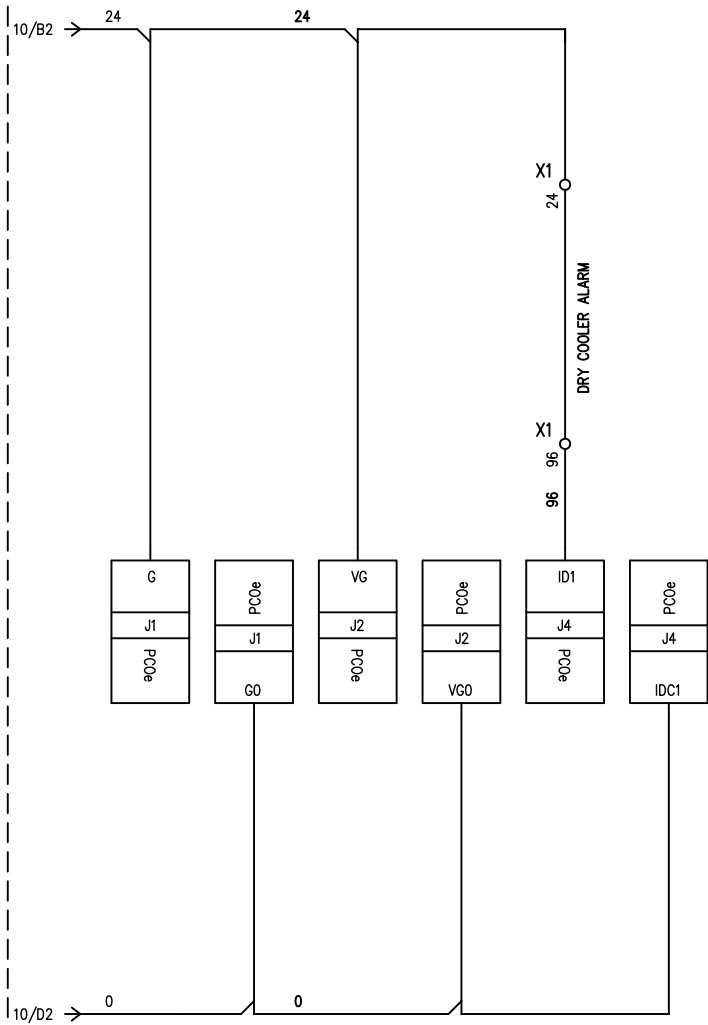
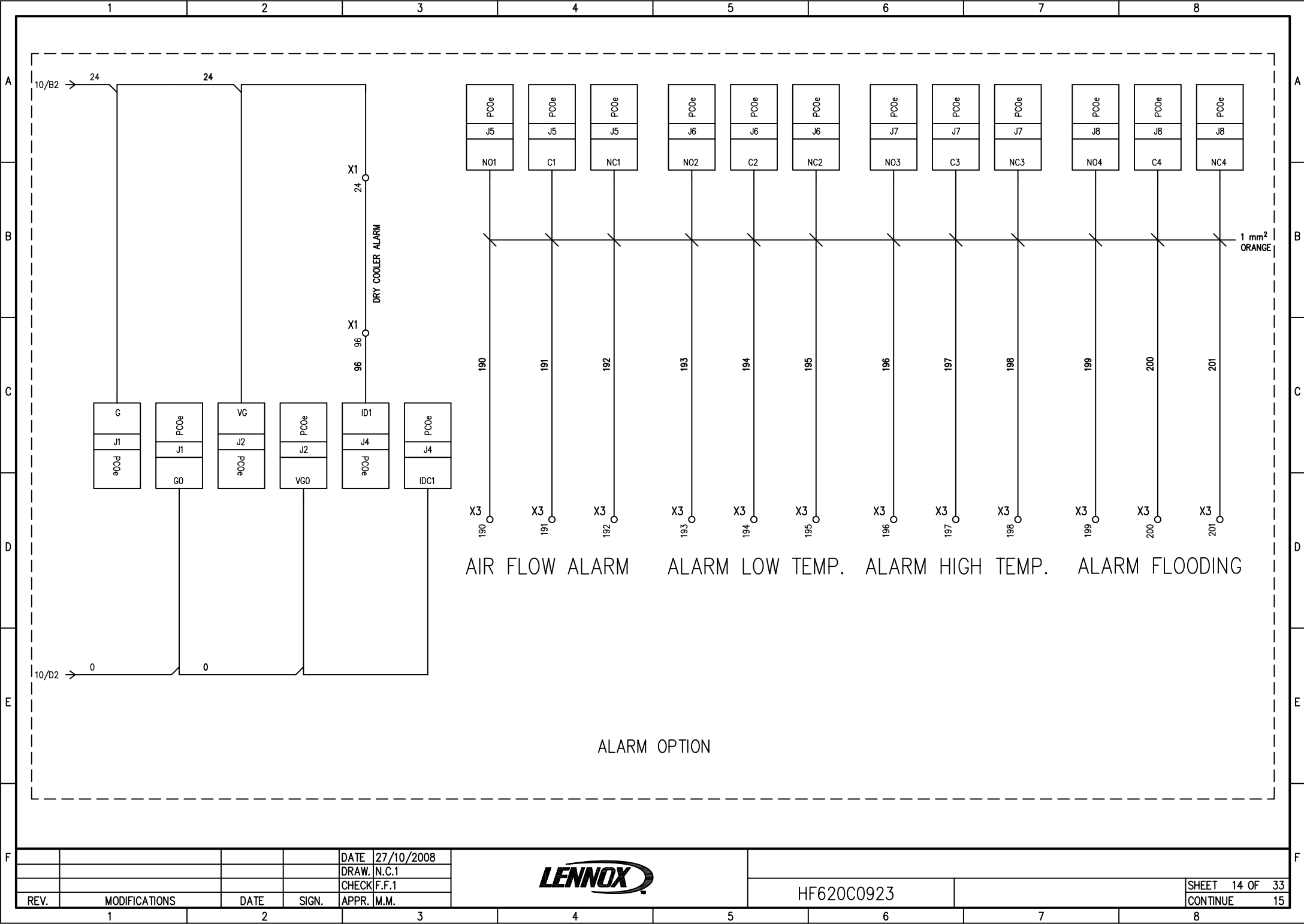
FAN STATUS
OPTION

REV.	MODIFICATIONS	DATE	SIGN.	APPR.	M.M.

DATE 27/10/2008
DRAW. N.C.1
CHECK F.F.1
APPR. M.M.



HF620C0923

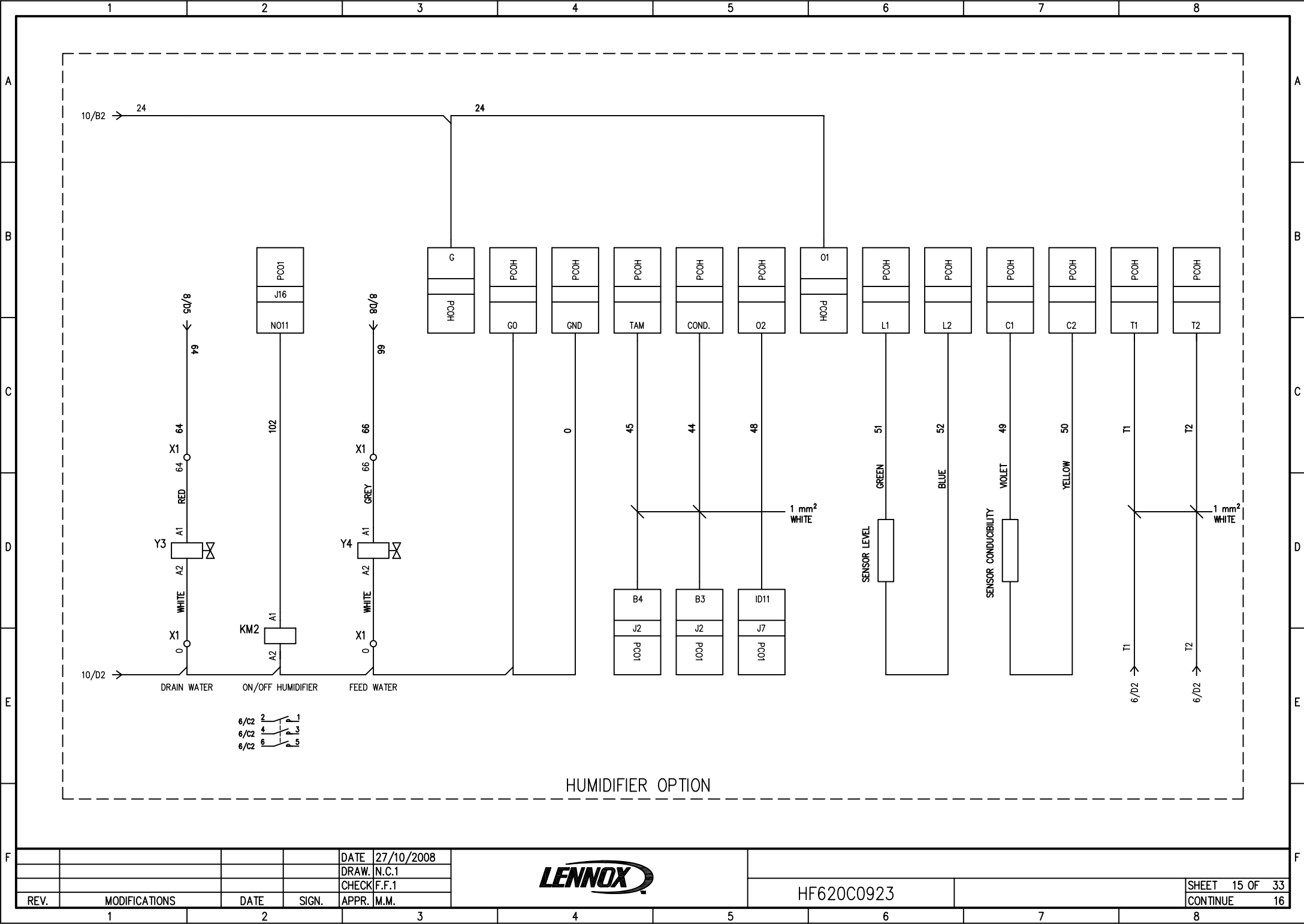


ALARM OPTION

DATE	27/10/2008
DRAW.	N.C.1
CHECK	F.F.1
REV.	MODIFICATIONS
DATE	SIGN.
APPR.	M.M.



HF620C0923

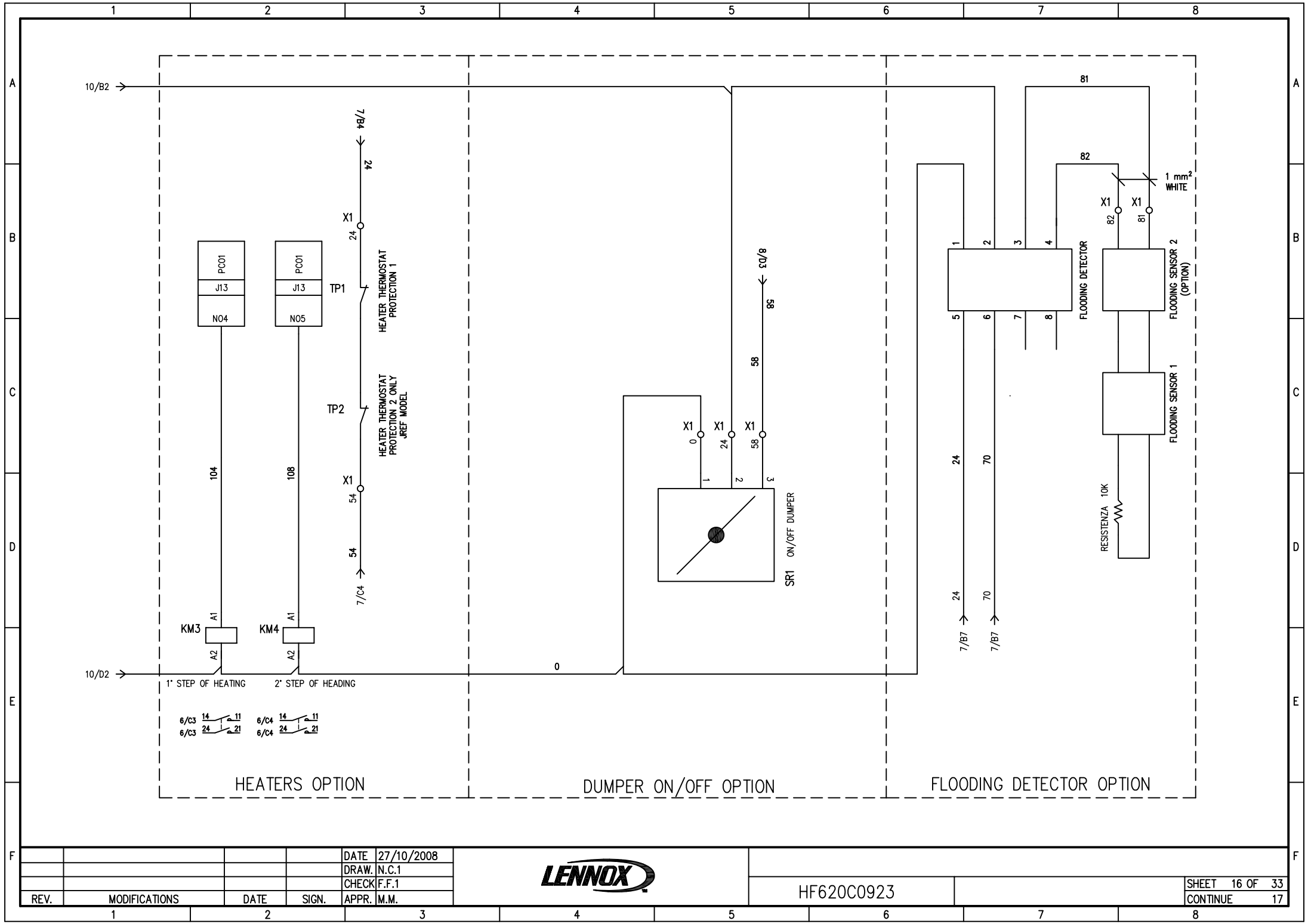


HUMIDIFIER OPTION

DATE	27/10/2008
DRAW.	N.C.1
CHECK	F.F.1
REV.	MODIFICATIONS
DATE	SIGN.
APPR.	M.M.



HF620C0923



HEATERS OPTION

DUMPER ON/OFF OPTION

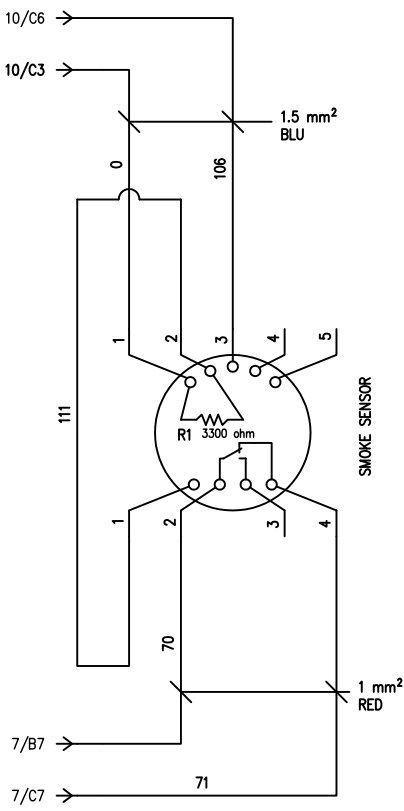
FLOODING DETECTOR OPTION

REV.	MODIFICATIONS	DATE	SIGN.	APPR.	M.M.

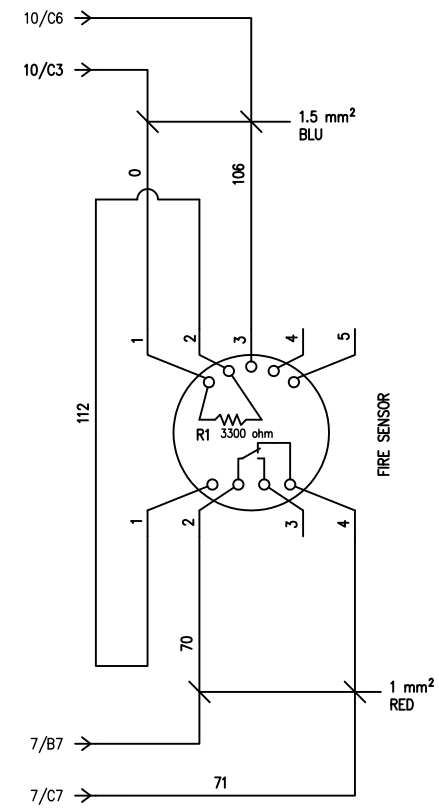
DATE	27/10/2008
DRAW.	N.C.1
CHECK	F.F.1
APPR.	M.M.



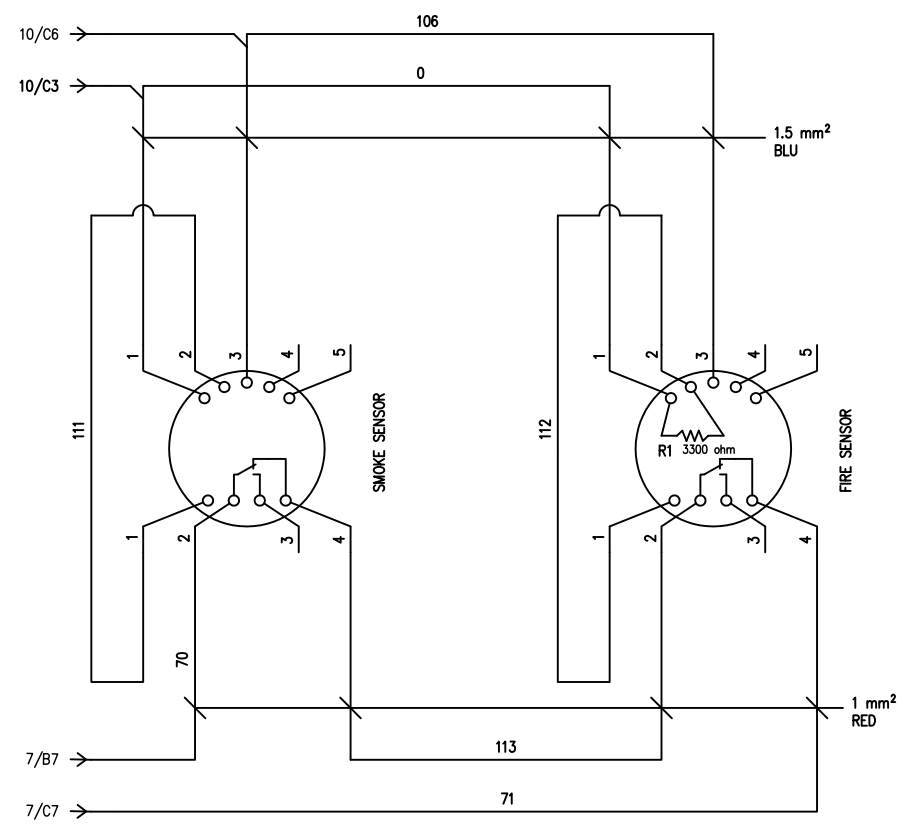
HF620C0923



SMOKE SENSOR OPTION



FIRE SENSOR OPTION

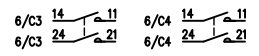
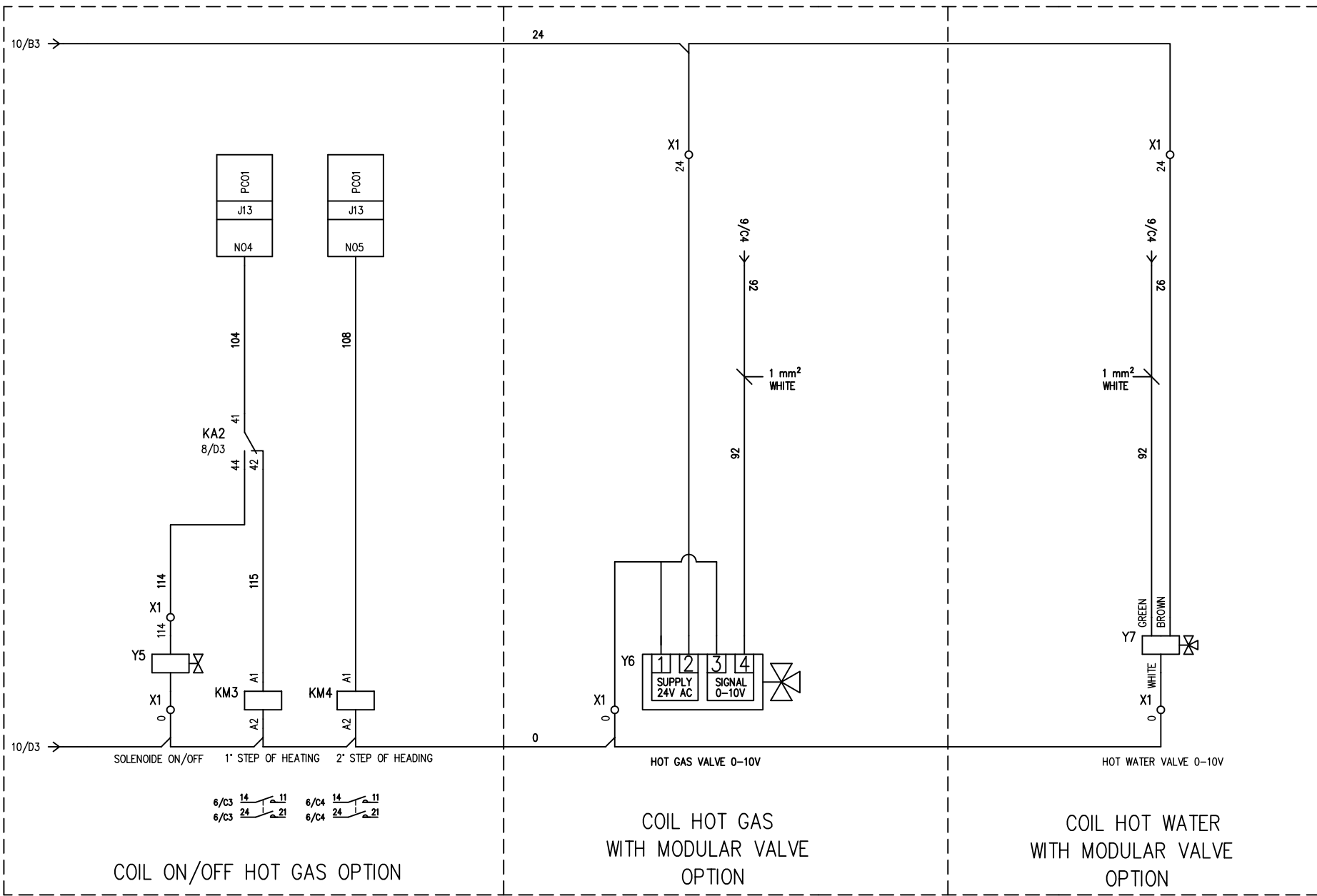


SMOKE/FIRE SENSOR OPTION

DATE	27/10/2008
DRAW.	N.C.1
CHECK	F.F.1
REV.	MODIFICATIONS
DATE	SIGN.
APPR.	M.M.



HF620C0923

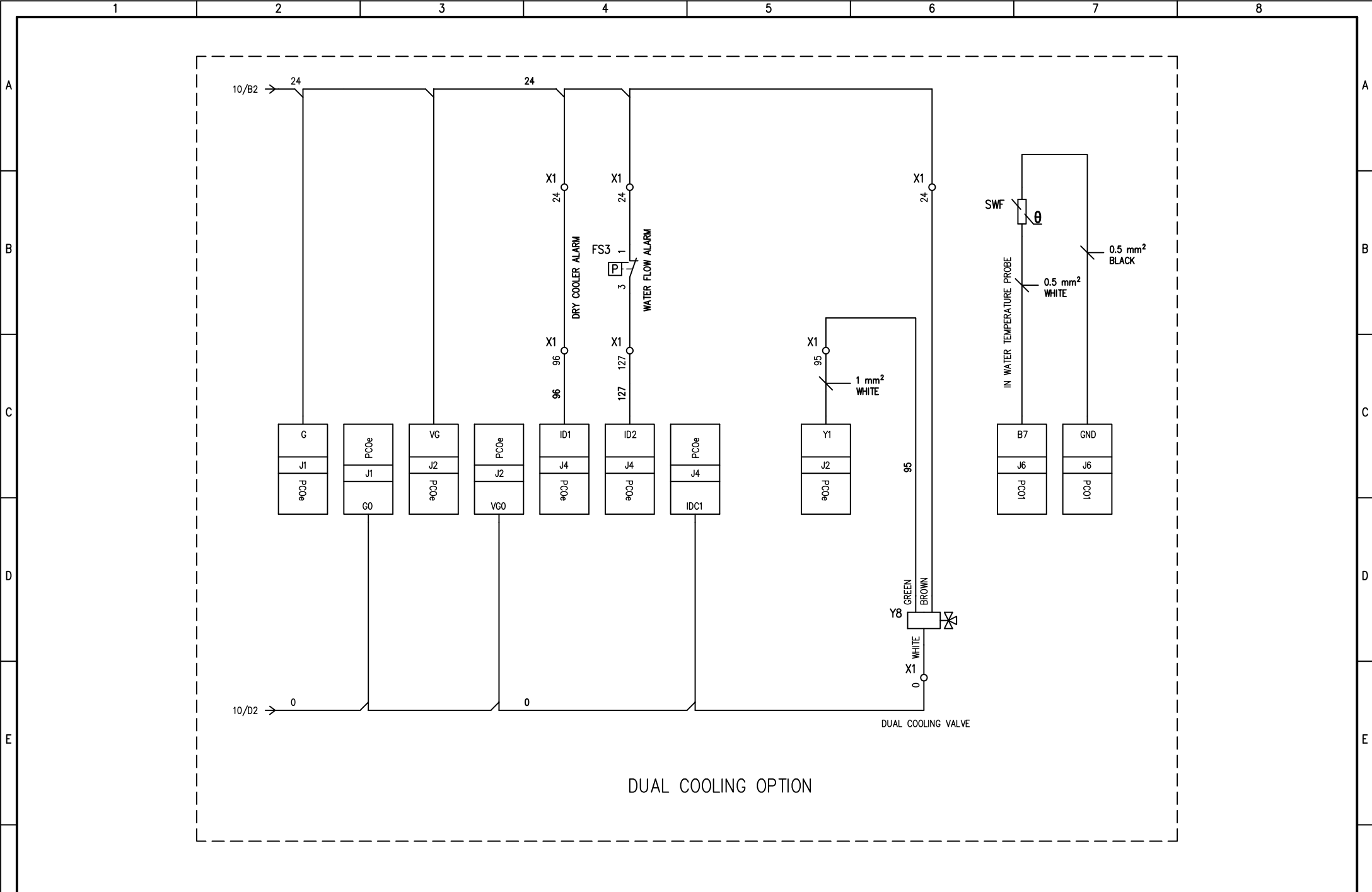


REV.	MODIFICATIONS	DATE	SIGN.	APPR.
1				
2				

DATE	27/10/2008
DRAW.	N.C.1
CHECK	F.F.1
APPR.	M.M.



HF620C0923



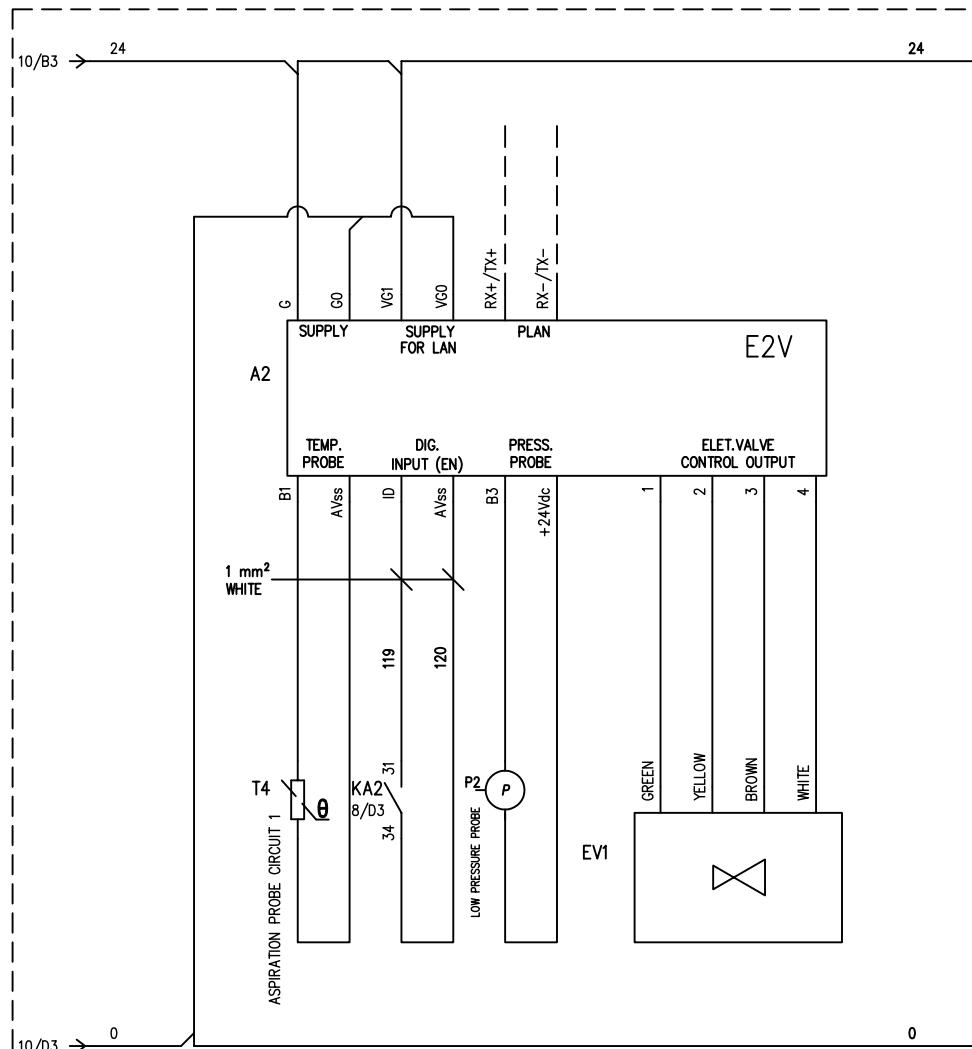
DUAL COOLING OPTION

REV.	MODIFICATIONS	DATE	SIGN.	APPR.	M.M.
1					
2					

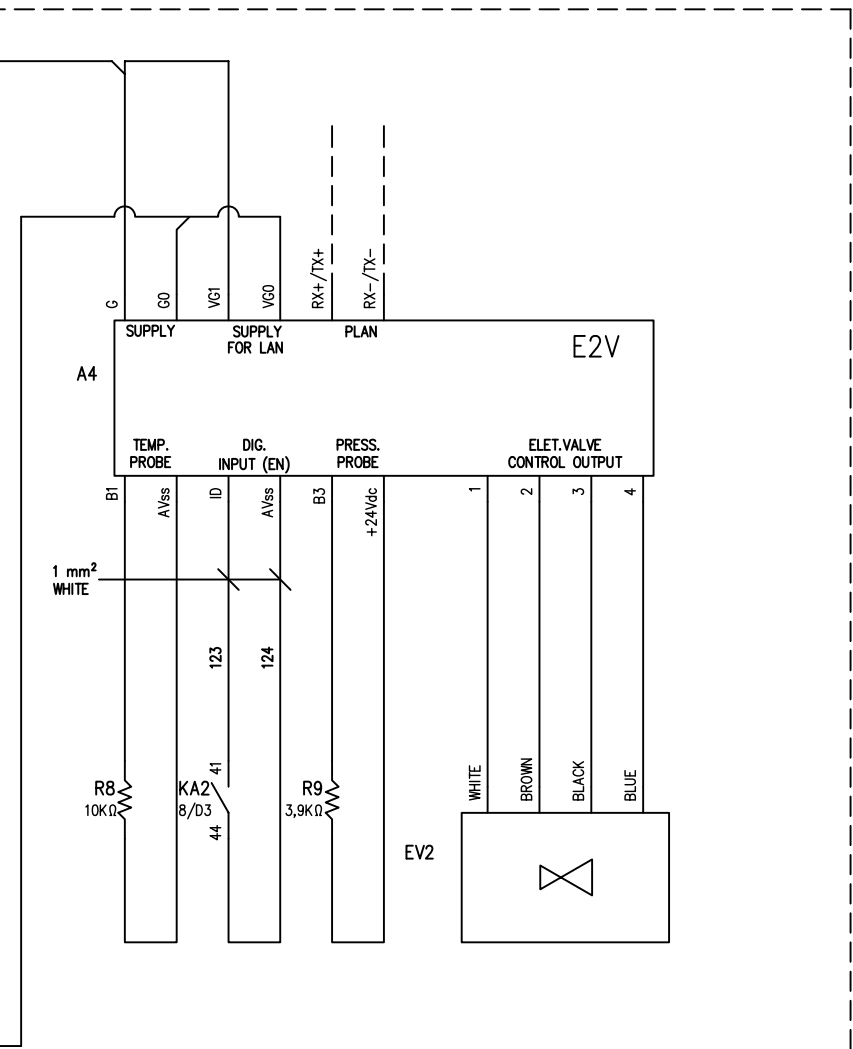
DATE 27/10/2008
 DRAW. N.C.1
 CHECK F.F.1
 APPR. M.M.



HF620C0923



ELECTRONIC EXPANSION VALVE OPTION

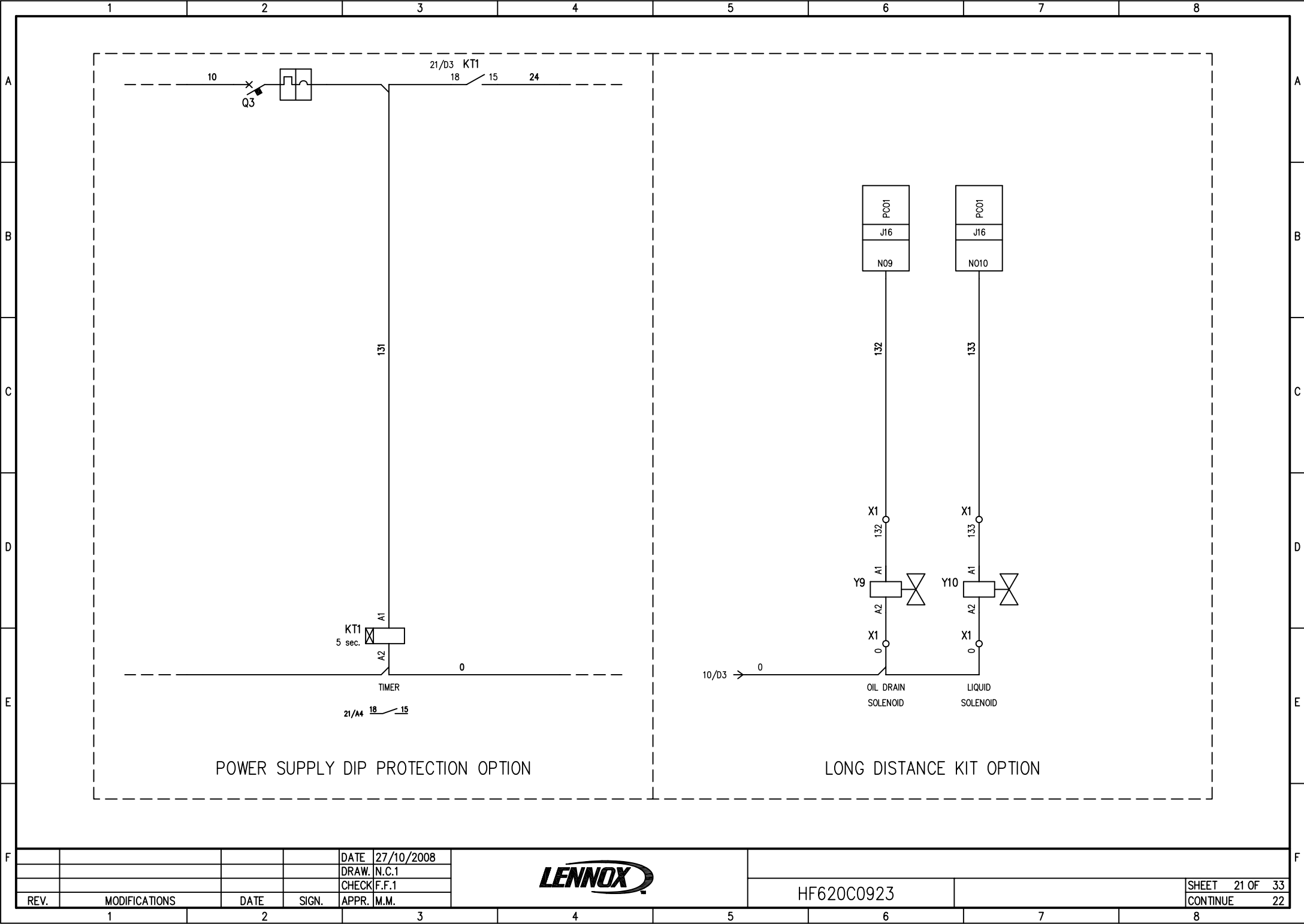


HOT GAS BYPASS OPTION

DATE	27/10/2008
DRAW.	N.C.1
CHECK	F.F.1
REV.	MODIFICATIONS
DATE	SIGN.
APPR.	M.M.



HF620C0923



POWER SUPPLY DIP PROTECTION OPTION

LONG DISTANCE KIT OPTION

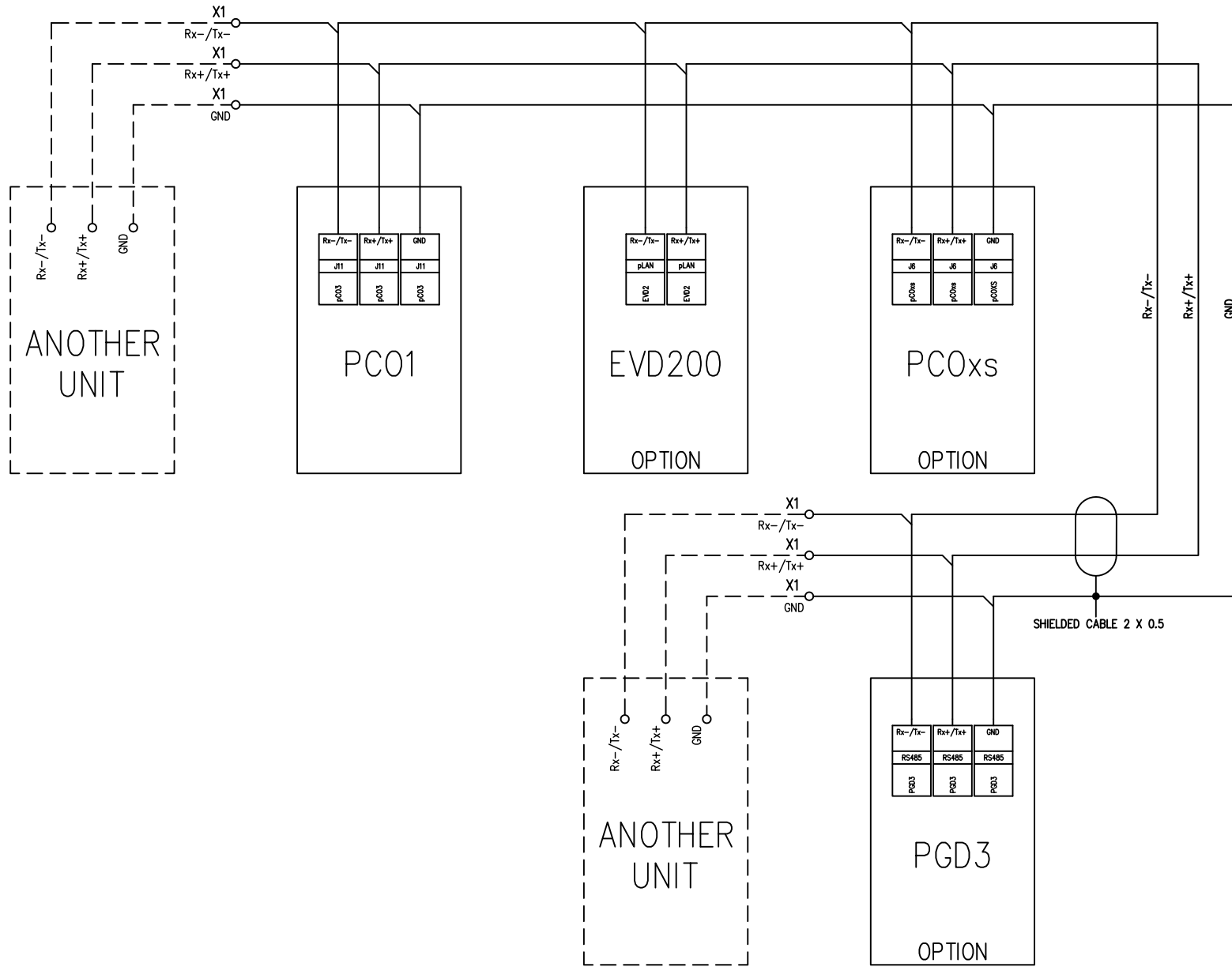
REV.	MODIFICATIONS	DATE	SIGN.	APPR.	M.M.

DATE 27/10/2008
 DRAW. N.C.1
 CHECK F.F.1
 APPR. M.M.



HF620C0923

pLAN CONNECTION



REV.	MODIFICATIONS	DATE	SIGN.	APPR.	M.M.

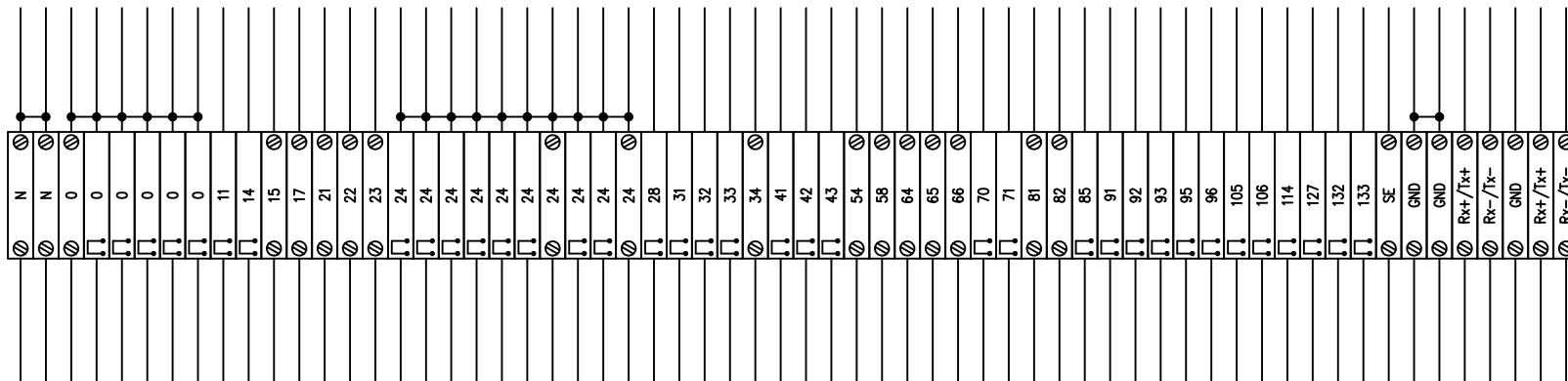
DATE 27/10/2008
 DRAW. N.C.1
 CHECK F.F.1



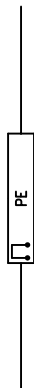
HF620C0923

TERMINAL STRIP

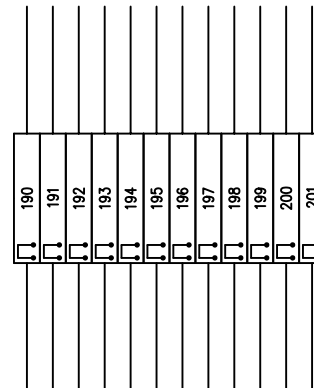
X1



XPE



X3



REV.	MODIFICATIONS	DATE	SIGN.	APPR.	M.M.

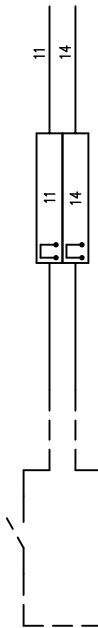
DATE	27/10/2008
DRAW.	N.C.1
CHECK	F.F.1



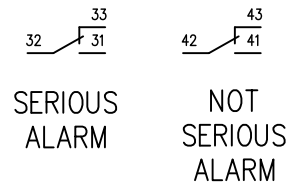
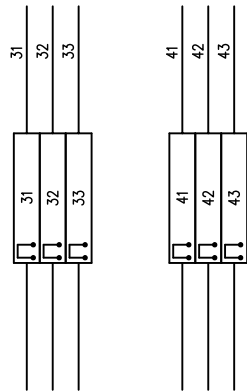
HF620C0923

USER CONNECTION

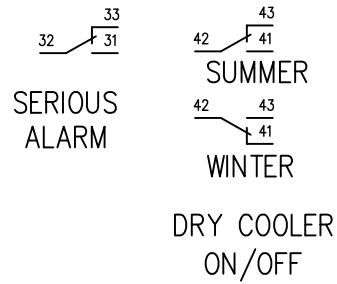
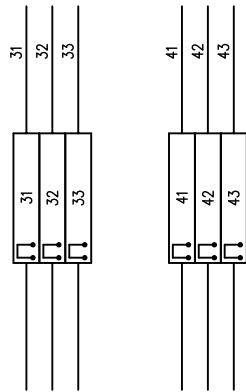
ON/OFF REMOTO



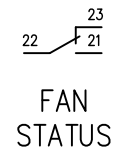
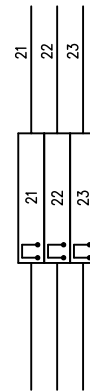
STANDARD MACHINE
ALARM FREE CONTACT



FREE COOLING MACHINE
ALARM FREE CONTACT

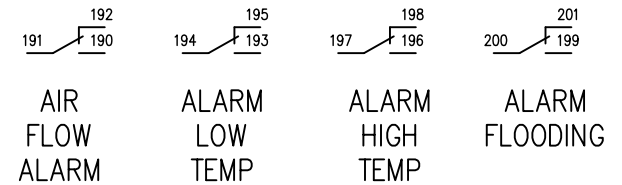
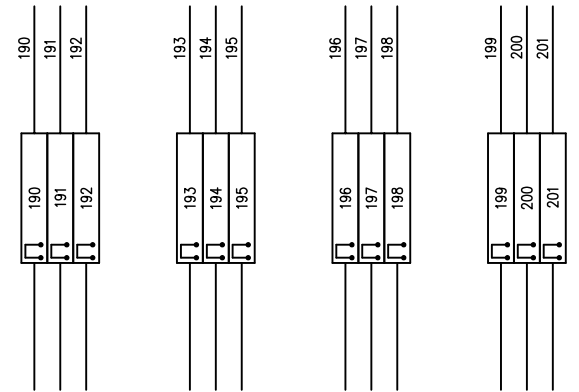


FAN STATUS
(OPTION)



FAN STATUS

ONLY WITH ALARM OPTION
FREE CONTACT

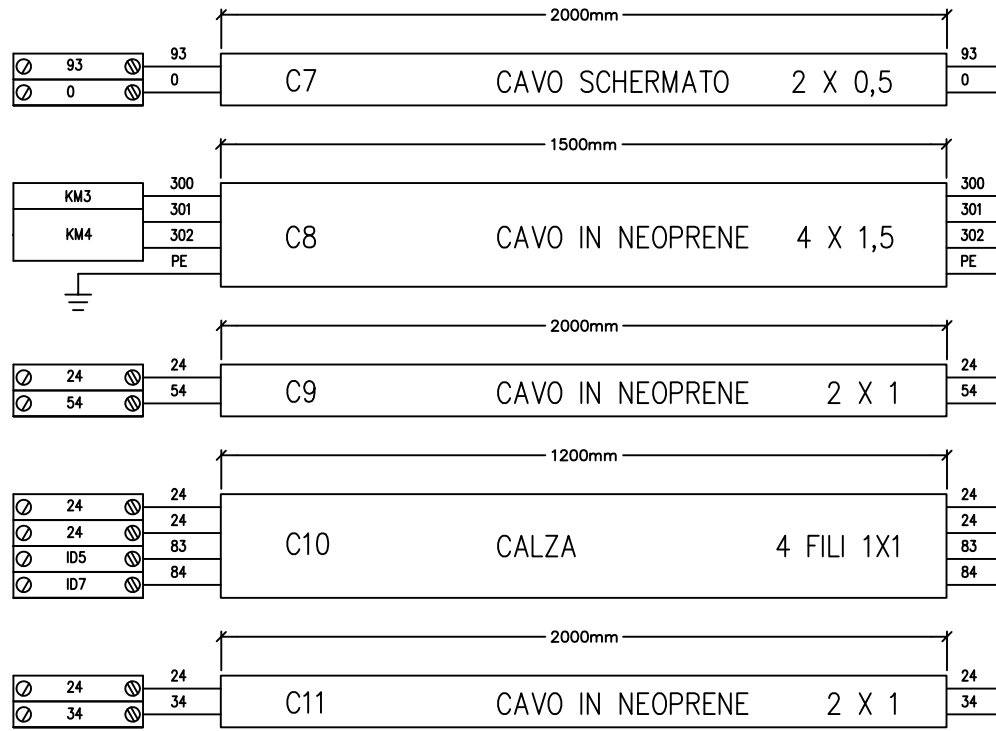
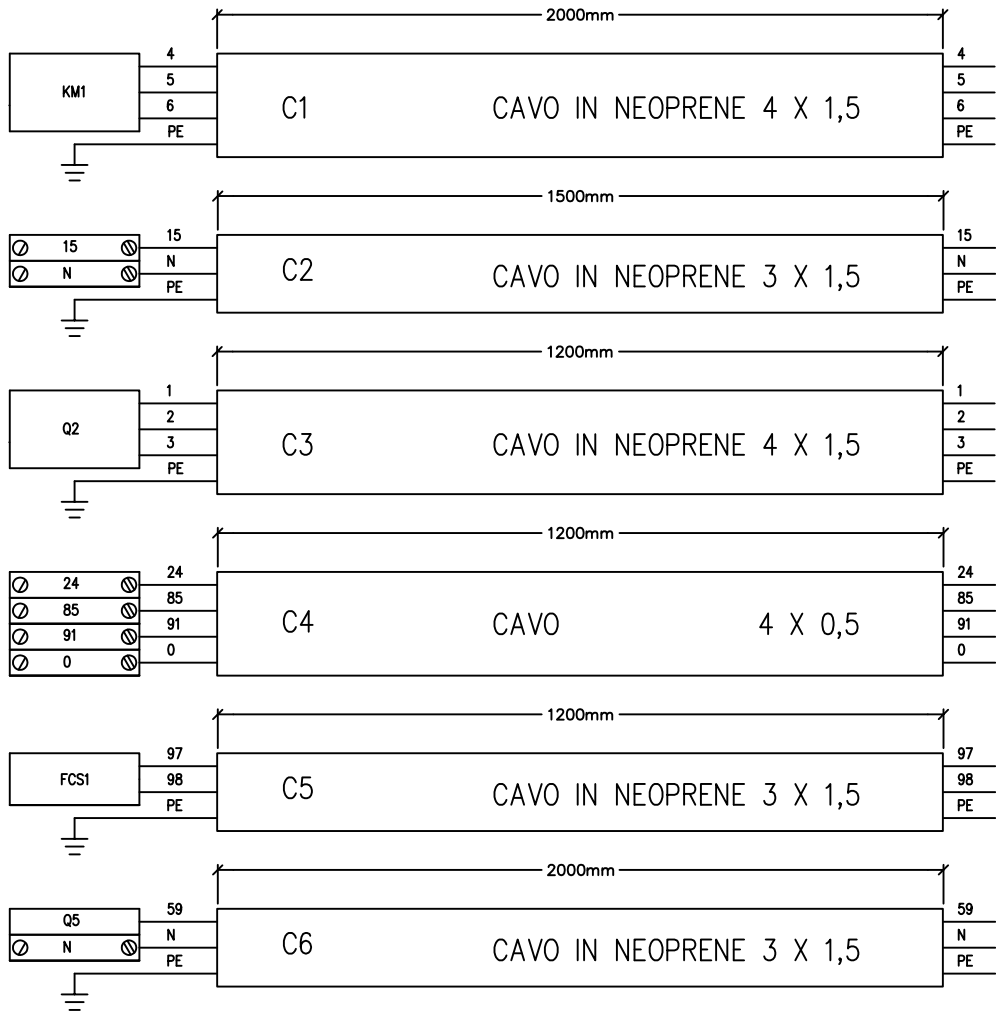


DATE	27/10/2008
DRAW.	N.C.1
CHECK	F.F.1
REV.	MODIFICATIONS
DATE	SIGN.
APPR.	M.M.



HF620C0923

LA LUNGHEZZA DEI CAVI E' RIFERITA ALL'ESTERNO DEL QUADRO

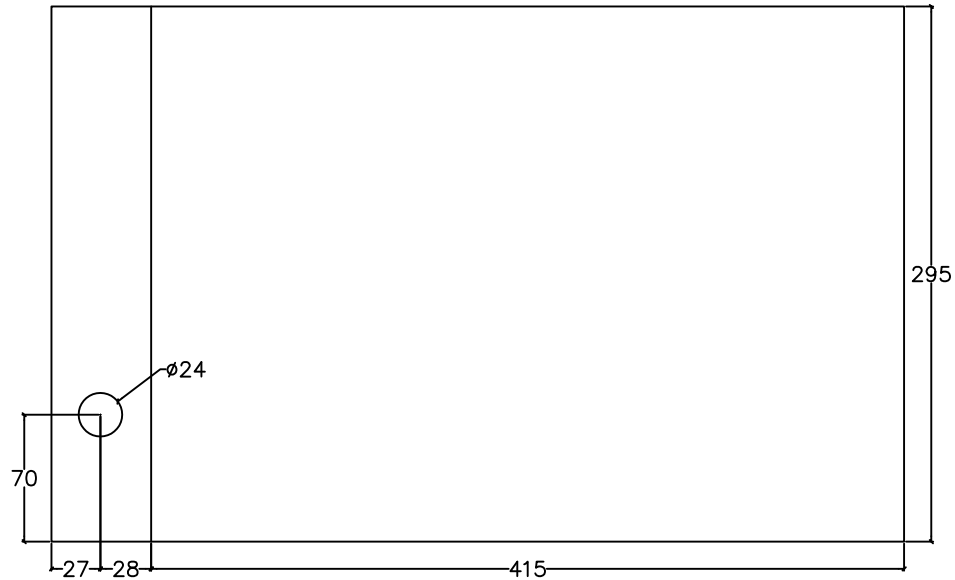
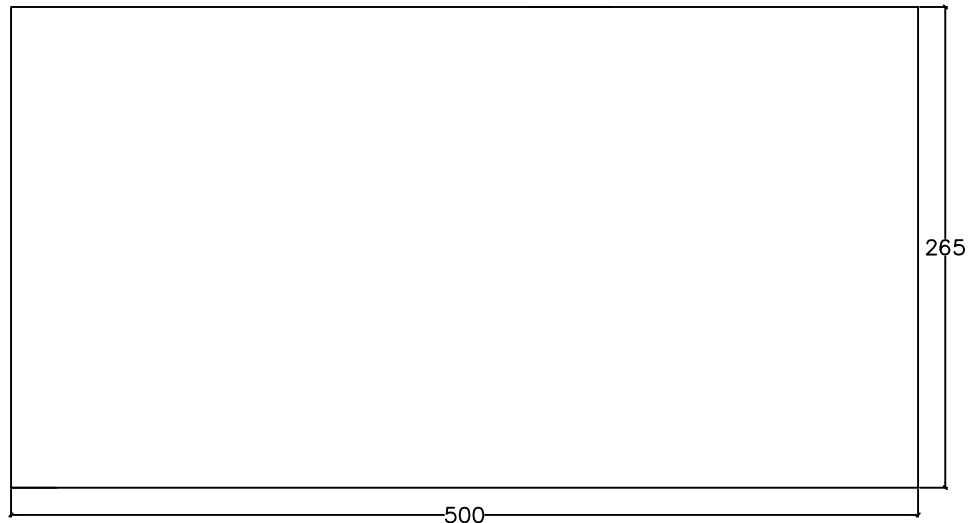


DATE	27/10/2008
DRAW.	N.C.1
CHECK	F.F.1
REV.	MODIFICATIONS
DATE	SIGN.
APPR.	M.M.



HF620C0923

LAYOUT PIASTRA DI FONDO



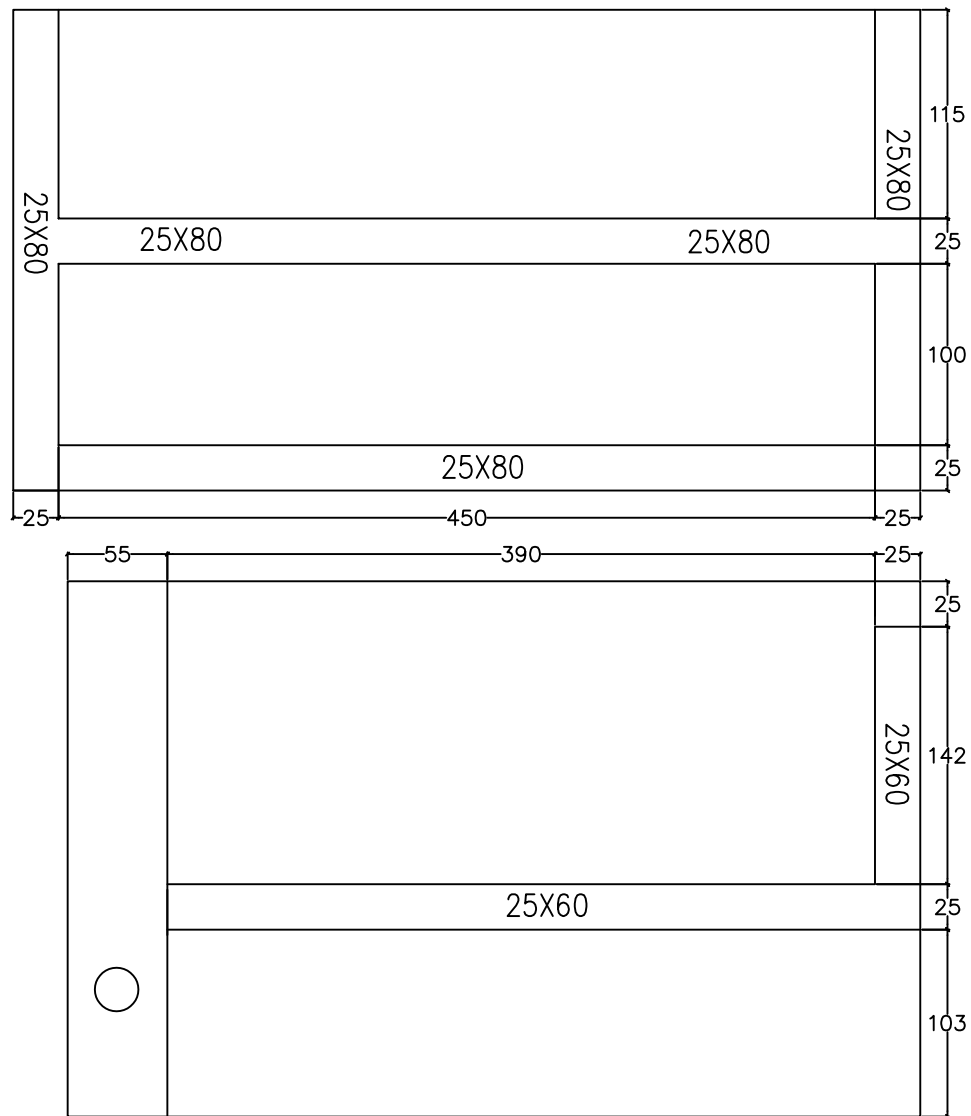
REV.	MODIFICATIONS	DATE	SIGN.	APPR.	M.M.

DATE	27/10/2008
DRAW.	N.C.1
CHECK	F.F.1
APPR.	M.M.



HF620C0923

LAYOUT DISTRIBUZIONE CANALINE



REV.	MODIFICATIONS	DATE	SIGN.	APPR.	M.M.

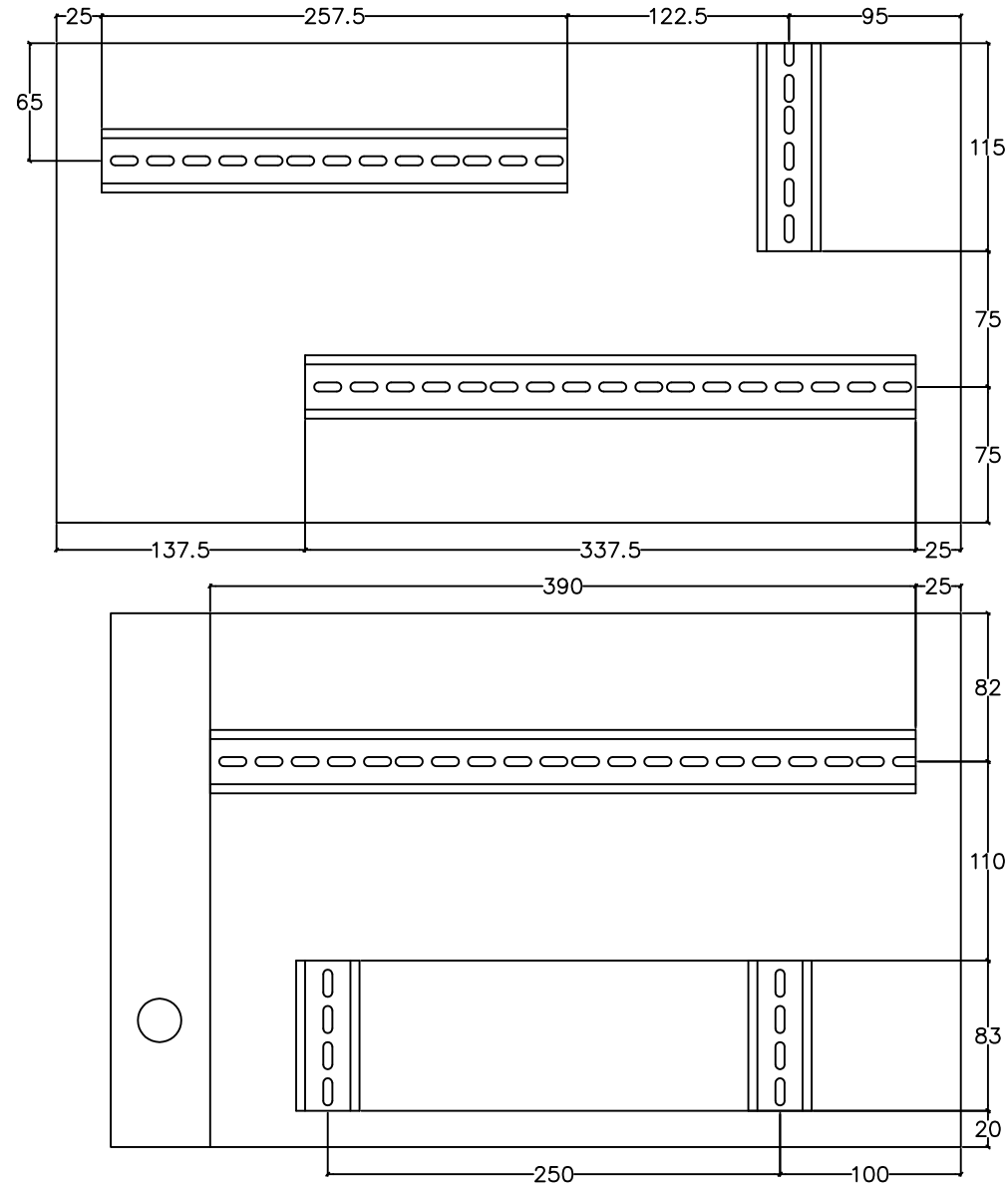
DATE 27/10/2008
 DRAW. N.C.1
 CHECK F.F.1



HF620C0923

LAYOUT DISTRIBUZIONE GUIDE DIN

LE GUIDE DIN DEVONO ESSERE ALTE 5mm



REV.	MODIFICATIONS	DATE	SIGN.	APPR.	M.M.

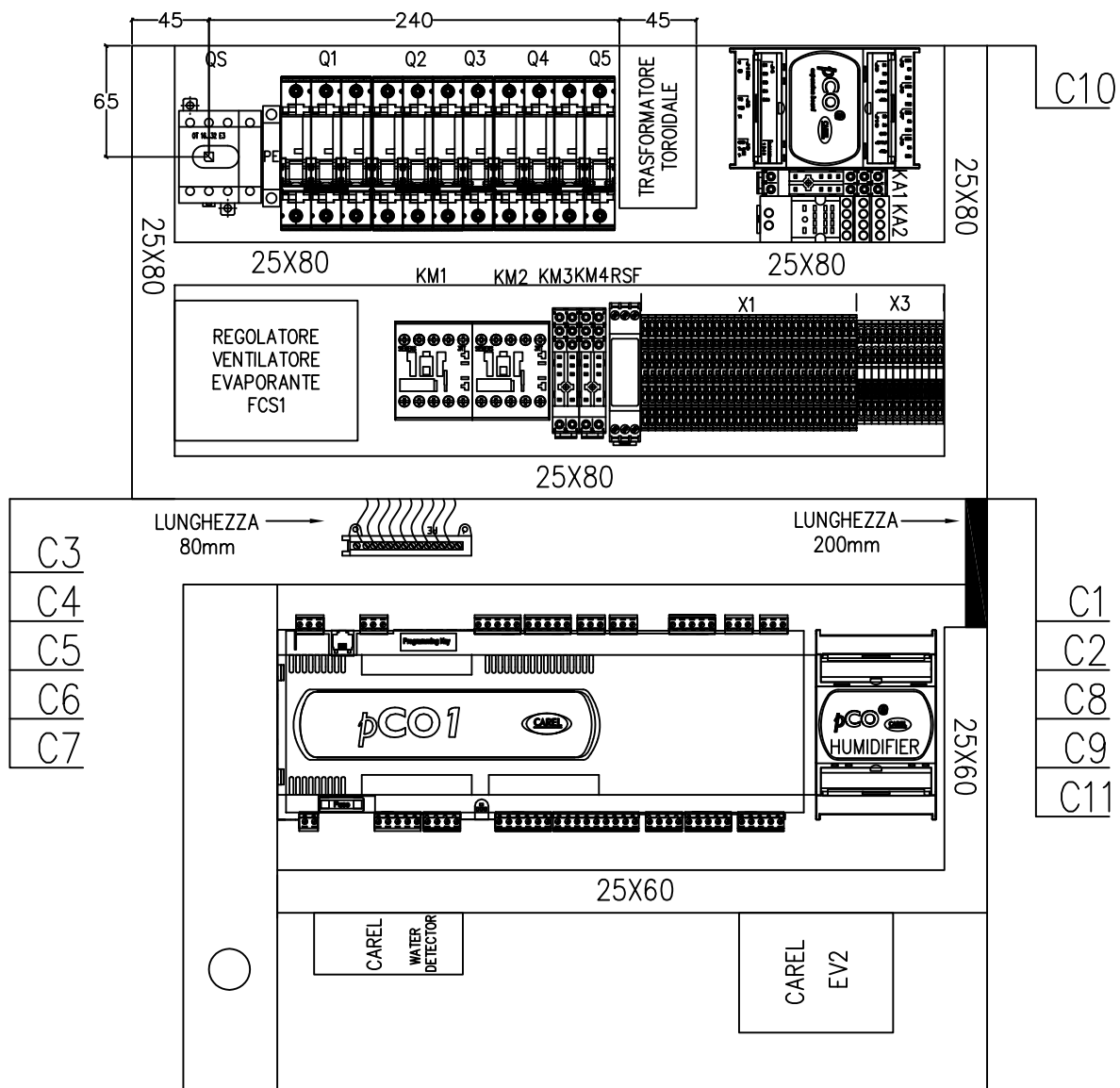
DATE 27/10/2008
 DRAW. N.C.1
 CHECK F.F.1



HF620C0923

LAYOUT DISTRIBUZIONE DEI COMPONENTI DEL QUADRO

L'ALTEZZA DEI COMPONENTI SULLA PIASTRA NON DEVE SUPERARE I 90mm



REV.	MODIFICATIONS	DATE	SIGN.	APPR.	M.M.

DATE	27/10/2008
DRAW.	N.C.1
CHECK	F.F.1
APPR.	M.M.



HF620C0923

DISTINTA BASE A CUI DEVE ATTENERSI IL QUADRISTA


UBICAZIONE	SIGLA	FUNZIONE	MARCA	CODICE	DESCRIZIONE	QUANTITA'	M.U.	POSIZIONE
	QS	SEZIONATORE	ABB	OT32E4+OHY3AJ+OXS5X85	SEZIONATORE 4P In= 32A + MANIGLIA + ALBERO	1	PCE	
	Q1	PROTEZIONE COMPRESSORE	SIEMENS	5SY6 310-7	INT. AUT. 3P C 10A 6kA	1	PCE	
	Q2	PROTEZIONE VENTILATORE + RSF + TR	SIEMENS	5SY6 310-7	INT. AUT. 3P C 10A 6kA	1	PCE	
	Q3	PROTEZIONE CIRCUITO DI COMANDO	SIEMENS	5SY6 104-7	INT. AUT. 1P C 4A 6KA	1	PCE	
	XPE	MORSETTIERA	PHOENIX	3044212	MORSETTO DI TERRA UT 16-PE	1	PCE	
	X1	MORSETTIERA	PHOENIX	3031157	MORSETTO A MOLLA GRIGIO STTB 1,5	31	PCE	
	RSF	RELE' SEQUENZA FASE	GAVAZZI	DPA51CM44	IL QUADRISTA DEVE PREDISPORRE SOLTANTO I FILI	1	PCE	
	TR	TRASFORMATORE MONOFASE TOROIDALE	MARINI		TRASFORMATORE Vin=230V / Vout=24V S=100VA	1	PCE	
	KM1	ON/OFF COMPRESSORE	SIEMENS	3RT1017-1AB01	TELERUTTORE 5,5 KW 3P 400V BOB. 24V AC	1	PCE	
	KA2	STATO COMPRESSORE	FINDER	55348024+9474+094.71	RELE' + ZOCCOLO + PONTICELLO DI RITENUTA	1	PCE	
		PIASTRA DI FONDO	HIREF	HF17000909 HF17001097	PIASTRA DI FONDO	1	PCE	
		BARRA DI TERRA			BARRA DI TERRA	1	PCE	



				DATE 27/10/2008				
				DRAW. N.C.1				
				CHECK F.F.1				
REV.	MODIFICATIONS	DATE	SIGN.	APPR. M.M.		HF620C0923		SHEET 30 OF 33 CONTINUE 31

1	2	3	4	5	6	7	8	
UBICAZIONE	SIGLA	FUNZIONE	MARCA	CODICE	DESCRIZIONE	QUANTITA'	M.U.	POSIZIONE
A		SPINE COMBICOM	PHOENIX	1757019	SPINE COMBICOM 2 POLI CON PASSO DA 5,08mm	1	PCE	A
		SPINE COMBICOM	PHOENIX	1757022	SPINE COMBICOM 3 POLI CON PASSO DA 5,08mm	6	PCE	
		SPINE COMBICOM	PHOENIX	1757035	SPINE COMBICOM 4 POLI CON PASSO DA 5,08mm	2	PCE	
B		SPINE COMBICOM	PHOENIX	1757048	SPINE COMBICOM 5 POLI CON PASSO DI 5,08mm	6	PCE	B
		SPINE COMBICOM	PHOENIX	1757051	SPINE COMBICOM 6 POLI CON PASSO DI 5,08mm	1	PCE	
		SPINE COMBICOM	PHOENIX	1757080	SPINE COMBICOM 9 POLI CON PASSO DI 5,08mm	1	PCE	



REV.	MODIFICATIONS	DATE	SIGN.	APPR.	M.M.		HF620C0923	SHEET 31 OF 33
								CONTINUE 32

1	2	3	4	5	6	7	8
OPZIONE UMIDIFICATORE							
A	UBICAZIONE	SIGLA	FUNZIONE	MARCA	CODICE	DESCRIZIONE	QUANTITA' M.U. POSIZIONE
	Q4		PROTEZIONE UMIDIFICATORE/RESISTENZE	SIEMENS	5SY6316-7/HF40000730	INT. AUT. 3P C16A 6KA	1 PCE
	KM2		ON/OFF UMIDIFICATORE	SIEMENS	HF40000747 3RT1017-1AB01	TELERUTTORE 5,5 KW 3P 400V BOB. 24V AC	1 PCE
OPZIONE RESISTENZE							
B	UBICAZIONE	SIGLA	FUNZIONE	MARCA	CODICE	DESCRIZIONE	QUANTITA' M.U. POSIZIONE
	Q4		PROTEZIONE UMIDIFICATORE/RESISTENZE	SIEMENS	5SY6316-7/HF40000730	INT. AUT. 3P C16A 6KA	1 PCE
	KM3		ON/OFF RESISTENZE 1' STEP	FINDER	HF40000253+HF40000251 40528024+9505+09571	RELE' + ZOCCOLO + PONTICELLO DI RITENUTA	1 PCE
C	KM4		ON/OFF RESISTENZE 2' STEP	FINDER	HF40000253+HF40000251 40528024+9505+09571	RELE' + ZOCCOLO + PONTICELLO DI RITENUTA	1 PCE
OPZIONE CONTROLLO CONDENSAZIONE MONOCIRCUITO							
D	UBICAZIONE	SIGLA	FUNZIONE	MARCA	CODICE	DESCRIZIONE	QUANTITA' M.U. POSIZIONE
	Q5		PROTEZIONE REGOLATORE DI GIRI	SIEMENS	5SY6106-7/HF40000723	INT. AUT. 1P C6A 6KA	1 PCE
OPZIONE SEGNALAZIONE STATO VENTILATORE							
E	UBICAZIONE	SIGLA	FUNZIONE	MARCA	CODICE	DESCRIZIONE	QUANTITA' M.U. POSIZIONE
	KA1		RELE'	FINDER	HF40000253 + HF40000251 40528024+9505+09571	RELE' + ZOCCOLO + PONTICELLO DI RITENUTA	1 PCE
F							
				DATE	27/10/2008		
				DRAW.	N.C.1		
				CHECK	F.F.1		
REV.	MODIFICATIONS	DATE	SIGN.	APPR.	M.M.		
						HF620C0923	SHEET 32 OF 33
							CONTINUE 33



HF620C0923

OPZIONE POMPA SCARICO CONDENZA

UBICAZIONE	SIGLA	FUNZIONE	MARCA	CODICE	DESCRIZIONE	QUANTITA'	M.U.	POSIZIONE
	F1	PROTEZIONE POMPA SCARICO CONDENZA	ITALWEBER	0101001	FUSIBILE IN VETRO 5 X 20 In= 1A	1	PCE	
	F	MORSETTO PORTA FUSIBILE	PHOENIX	3004100	PER FUSIBILI TIPO G 5 X 20	1	PCE	

OPZIONE PROTEZIONE CONTRO I BUCHI DI TENSIONE

UBICAZIONE	SIGLA	FUNZIONE	MARCA	CODICE	DESCRIZIONE	QUANTITA'	M.U.	POSIZIONE
	KT1	RELE' TEMPORIZZATORE	FINDER	HF40000876 801102400000	RELE' TEMPORIZZATORE	1	PCE	

