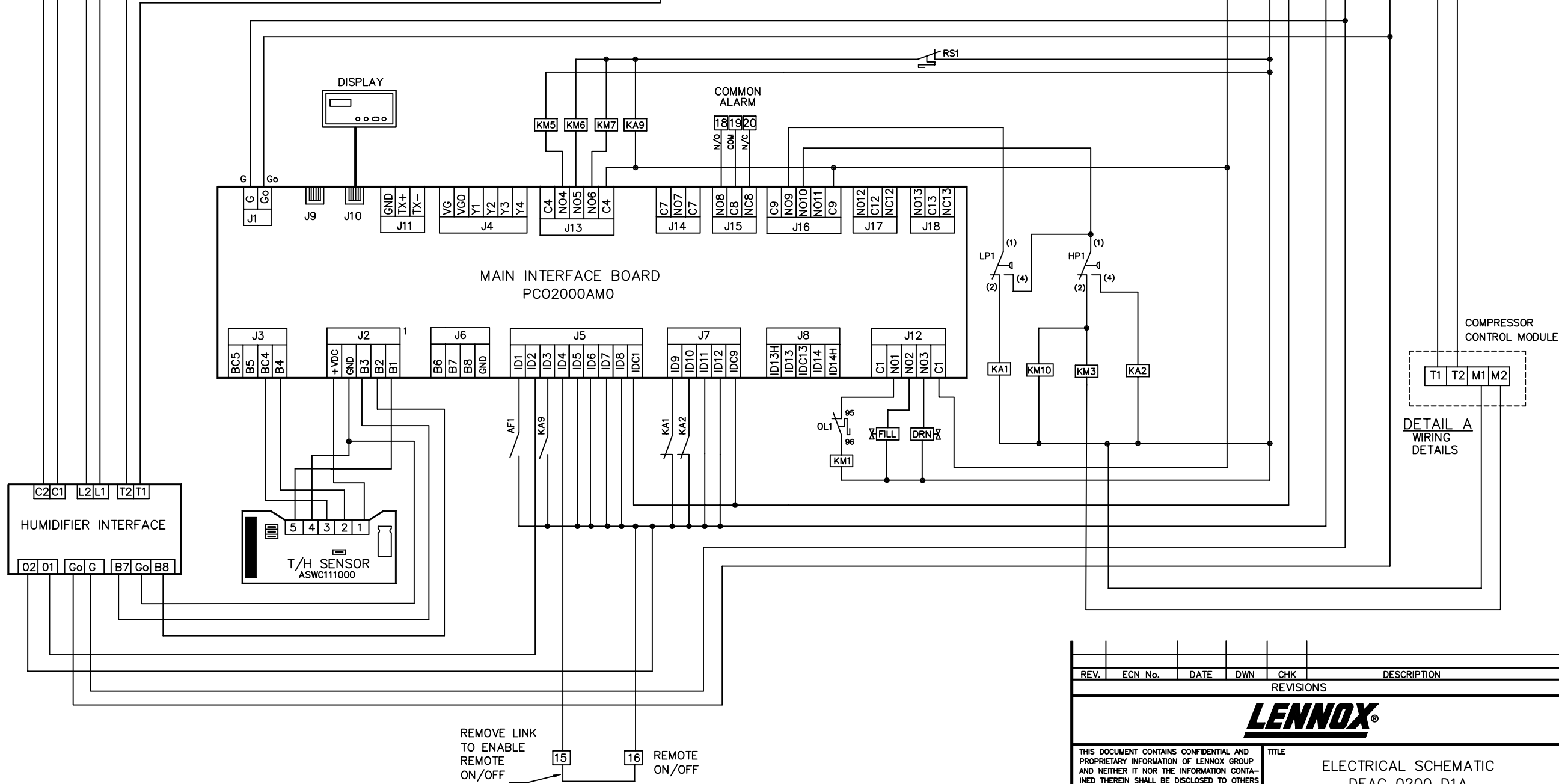


- LEGEND**
- AF1 - AIR FLOW SWITCH 1
 - AF2 - AIR FLOW SWITCH 2
 - CT1 - CURRENT TRANSFORMER
 - CH1,2 - CRANKCASE HEATER 1,2
 - C1 - CONDUCTIVITY PROBE 1
 - C2 - CONDUCTIVITY PROBE 2
 - CWV1 - CHILLED WATER VALVE
 - CWS - CHILLED WATER TEMP. SENSOR
 - DRN - HUMID. DRAIN VALVE
 - FILL - HUMID. FILL VALVE
 - FC1 - FILTER CLOG SWITCH
 - F1,2,3 - FUSE
 - FSC1 - FAN SPEED CONTROL MODULE 1
 - HP1 - HIGH PRESSURE SWITCH 1
 - HP2 - HIGH PRESSURE SWITCH 2
 - J12 - INTERCONNECTION SOCKET
 - KA1 - LP1 SIGNAL RELAY
 - KA2 - HP1 SIGNAL RELAY
 - KA3 - LP2 SIGNAL RELAY
 - KA4 - HP2 SIGNAL RELAY
 - KA6 - WATER WARNING RELAY
 - KA9 - REHEAT STAT SIGNAL RELAY
 - KM1 - MAIN FAN 1 CONTACTOR
 - KM2 - MAIN FAN 2 CONTACTOR
 - KM3 - COMPRESSOR 1 CONTACTOR
 - KM4 - COMPRESSOR 2 CONTACTOR
 - KM5 - HUMIDIFIER CONTACTOR
 - KM6 - REHEAT 1 CONTACTOR
 - KM7 - REHEAT 2 CONTACTOR
 - KM10 - CONDENSER MTR(S) CONTACTOR
 - LP1 - LOW PRESSURE SWITCH 1
 - LP2 - LOW PRESSURE SWITCH 2
 - LV1 - LEVEL PROBE 1
 - LV2 - LEVEL PROBE 2
 - OL1 - FAN 1 OVERLOAD RELAY
 - OL2 - FAN 2 OVERLOAD RELAY
 - PT1 - PRESSURE TRANSDUCER FSC
 - Q1 - MAIN FAN 1 MCB
 - Q2 - MAIN FAN 2 MCB
 - Q3 - COMPRESSOR 1 MCB
 - Q4 - COMPRESSOR 2 MCB
 - Q5 - HUMIDIFIER MCB
 - Q6,Q7,Q8 - REHEAT 1&2 MCB
 - Q9 - MAIN TRANSFORMER MCB
 - Q10 - CONDENSER MTR(S) MCB
 - RS1 - REHEAT 1 STAT
 - T1 - MAINS TRANSFORMER

- WIRE COLOUR CODE**
- POWER**
- L1,L2,L3 - Brown
 - Neutral (N) - Black
 - Earth (Pe) - Green/Yellow
- CONTROL**
- 24VAC (term 1) - Pink
 - 24VAC (term 2) - Grey
 - 24VAC (term 3) - Orange
 - 24VAC (term 4) - White
 - 24VAC (term 5) - Yellow
 - 24VAC (term 6) - Violet
 - Interconn. (1 & 2) - Red/Green
 - Interconn. (3 & 4) - White/Green
- Humidifier**
- B7 - Grey/Black
 - B8 - Grey/Blue
 - AVSS - Yellow/Black
 - Level Probes - White/Grey
 - Cond. Probes - White/Orange
 - Current Xfmr - White/Violet



REV.	ECN No.	DATE	DWN	CHK	DESCRIPTION
REVISIONS					
LENNOX					
ELECTRICAL SCHEMATIC DEAC 0200 D1A					
DRG. BY	DATE	CHK. BY	REV	DRG. NO.	
G. KELLEHER	12/03/04		A	EL1629CA	