

# PRODUCT CATALOGUE



PROVIDING **GLOBAL SYSTEM** SOLUTIONS

CHILLER  
MCW



## INTRODUCTION TO THE RANGE

The compact and robust design of the **MCW** range allows easy installation in machine rooms, for both commercial and industrial applications. A wide range of options, factory fitted, provides an ideal solution for each application.

To facilitate maintenance operations, the components are highly accessible. The water connections (evaporator and condensers) are also positioned to simplify installation on site as far as possible.

This range is also available in a split version, **MCB**. In this version, there is no condenser, and a liquid reservoir is fitted. It is also possible to connect a remote air condenser.

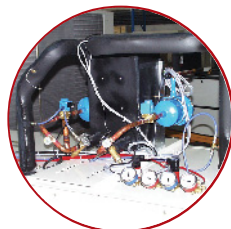
## CONSTRUCTION

- Machine welded framework for enhanced rigidity
- Paint protection (RAL 7023 for the frame and RAL 9002 for the superstructure)
- Hermetic scroll compressor (MCW S)
- Semi-hermetic piston compressor (MCW P)
- Isolation valve on the discharge of each compressor (MCW P only)
- R407C refrigerant
- Insulated stainless steel 316 brazed plate evaporator
- Stainless steel 316 brazed plate condensers
- Control and protection panel according to EN 60 204-1
- 1 or 2 independent cooling circuits according to size
- Filter dryer, liquid indicator, thermostatic expansion valve, HP and LP pressure switches
- Electronic controller
- Threaded or flanged hydraulic connection, according to size



## OPTIONS

- Cartridge type filter dryer
- Oil pressure gauge
- HP/LP pressure gauges
- Evaporator anti-freeze heater
- Pressure-sensitive water valve on condenser
- Suction and/or discharge valves
- Part-winding starting for 400/3/50 (MCW P)
- Timer
- CLIMATIC II
- Graphic display unit
- Pressure sensors
- Electronic expansion valve
- Main switch
- Compressor priority switch
- 6-step capacity control
- 2-step heating control
- 4-step heating control
- General fault relay
- Main switch with fuses
- Soundproof compressor cabinet
- Discharge silencer
- Water filter



MCW - 73 → 304 kW

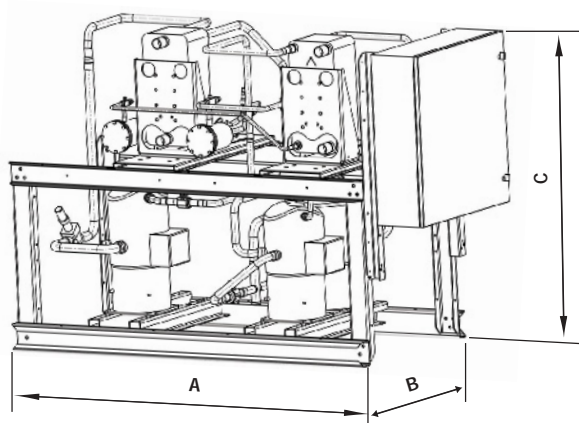
## □ GENERAL DATA

MCW		71 S	81 S	92 S	112 S	132 S	162 S	192 P	242 P	282 P	
<b>Cooling mode</b>											
Cooling capacity <sup>(1)</sup>	kW	73	88	102	119	145	175	209	256	304	
Absorbed power <sup>(1)</sup>	kW	18	21	25	28	36	43	57	67	81	
COP		4,1	4,2	4,1	4,2	4,1	4,1	3,7	3,9	3,8	
<b>Electrical data</b>											
Voltage	V / Ph / Hz	400/3/50									
Start-up intensity	A	185	220	240	190	235	275	400	515	620	
Maximum current	A	48	57	67	78	94	112	135	178	216	
<b>Refrigeration circuit</b>											
Number of circuits	Nb	1	1	2	2	2	2	2	2	2	
Compressor	Nb	2	2	3	4	4	4	2	2	2	
Evaporator	Type	Brazen plates									
Capacity steps	Nb	2	2	3	4	4	4	4	4	4	
Refrigerant charge per circuit	kg	10	10	5	7	8	10	11	12	13	
<b>Condenser (brazen plates)</b>											
Number	Nb	1									
Nominal water flow	m <sup>3</sup> /h	16	19	22	25	31	37	46	56	66	
Pressure drop	kPa	57	62	73	53	80	77	82	90	99	
<b>Evaporator hydraulic connection</b>											
Type		Threaded					Flanged				
Diameter		1"1/4	1"1/2	1"1/2	1"1/2	DN 65	DN 65	DN 65	DN 65	DN 65	
<b>Condenser hydraulic connection</b>											
Type		Threaded					Flanged				
Diameter		1"1/4	1"1/2	1"1/2	DN 65	DN 65	DN 65	DN 65	DN 65	DN 65	
<b>Acoustic</b>											
Sound pressure level <sup>(2)</sup>	dB(A)	82	83	82	82	85	86	90	93	94	
<b>Operating limits</b>											
Maximum water temperature to condenser	°C	50									
Minimum water temperature to condenser	°C	15									
Maximum inlet water temperature	°C	22									
Minimum outlet water temperature	°C	6°C without glycol									

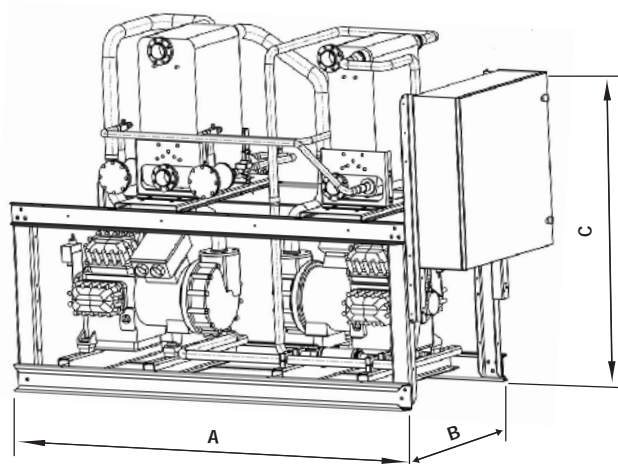
(1) Water in evaporator: 12°C / 7°C - Water in condenser :30°C / 35°C (2) EUROVENT conditions

## □ PHYSICAL DATA

1



2



MCW		71 S	81 S	92 S	112 S	132 S	162 S	192 P	242 P	282 P
<b>View</b>		<b>1</b>	<b>1</b>	<b>1</b>	<b>1</b>	<b>1</b>	<b>1</b>	<b>2</b>	<b>2</b>	<b>2</b>
A	mm	1830	1830	2240	2240	2240	2240	2240	2440	2440
B	mm	800	800	960	960	960	960	960	960	960
C	mm	1020	1020	1475	1640	1640	1655	1655	1655	1655
Weight without water	kg	457	505	668	795	861	945	1048	1249	1300
Operating weight	kg	470	520	687	820	890	980	1090	1300	1360



**BELGIUM,  
LUXEMBOURG :**

LENNOX BENELUX N.V./S.A.  
tel. : + 32 3 633 30 45  
fax : + 32 3 633 00 89  
e-mail : info.be@lennoxbenelux.com

**CZECH REPUBLIC :**

JANKA LENNOX a.s.  
tel. : + 420 2 510 88 111  
fax : + 420 2 579 10 393  
e-mail : janka@janka.cz

**FRANCE :**

LENNOX FRANCE  
tel. : + 33 1 64 76 23 23  
fax : + 33 1 64 76 35 75  
e-mail : marketing.france@lennoxfrance.com

**GERMANY :**

LENNOX DEUTSCHLAND GmbH  
tel. : + 49 69 42 09790  
fax : + 49 69 42 09 79 40  
e-mail : info.de@lennoxdeutschland.com

**NETHERLANDS :**

LENNOX BENELUX B.V.  
tel. : + 31 33 2471 800  
fax : + 31 33 2459 220  
e-mail : info@lennoxbenelux.com

**POLAND :**

LENNOX POLSKA Sp. z o.o.  
tel. : + 48 22 832 26 61  
fax : + 48 22 832 26 62  
e-mail : info@lennoxpolska.pl

**PORTUGAL :**

LENNOX PORTUGAL LDA.  
tel. : +351 22 998 33 70  
fax : +351 22 998 33 79  
e-mail : info@lennoxportugal.com

**RUSSIA :**

LENNOX DISTRIBUTION MOSCOW  
tel. : + 7 095 933 29 55  
fax : + 7 095 926 56 50  
e-mail : lennox.dist.moscow@co.ru

**SLOVAKIA :**

LENNOX SLOVENSKO s.r.o.  
tel. : + 421 2 44 87 19 27  
fax : + 421 2 44 88 64 72  
e-mail : lennox.slovensko@lennox.sk

**SPAIN :**

LENNOX REFAC S.A.  
tel. : + 34 915 40 18 10  
fax : + 34 915 42 84 04  
e-mail : marketing@lennox-refac.com

**UKRAINE :**

LENNOX DISTRIBUTION KIEV  
tel. : + 380 44 213 14 21  
fax : + 380 44 213 14 21  
e-mail : jankauk@uct.kiev.ua

**UNITED KINGDOM ,  
IRELAND :**

LENNOX INDUSTRIES LTD  
tel. : + 44 1604 669100  
fax : + 44 1604 669150  
e-mail : ukmarketing@lennoxind.com

**OTHER EUROPEAN COUNTRIES,  
AFRICA,  
MIDDLE-EAST :**

LENNOX DISTRIBUTION  
tel. : + 33 4 72 23 20 14  
fax : + 33 4 72 23 20 28  
e-mail : marketing@lennoxdist.com



**LENNOX**<sup>®</sup>

[www.lennox europe.com](http://www.lennox europe.com)

**MCW-PCA-0603-E**

Due to Lennox's ongoing commitment to quality, Specifications, Ratings and Dimensions subject to change without notice and without incurring liability. Improper installation, adjustment, alteration, service or maintenance can cause property damage or personal injury. Installation and service must be performed by a qualified installer and servicing agency.