

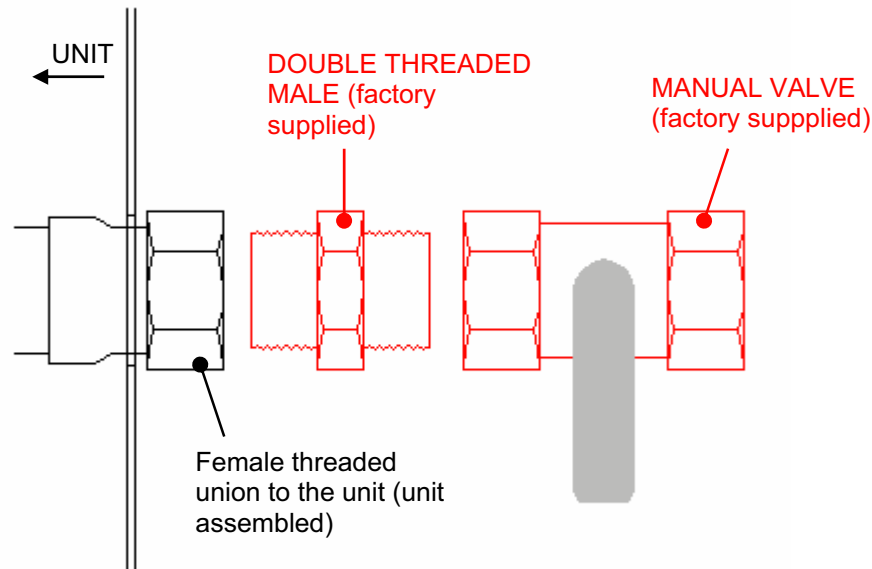
### IN/OUT ISOLATING VALVES KIT

UNIT RANGE	REFERENCE	DIAMETER (inch)	Installation	Valve kind	Material
EAC/R 009-021	M43061242	1"	Threaded	Manual	Brass
EAC/R 025-043	M43061243	1 ½"	Threaded	Manual	Brass
EAC/R 047-081	M43061244	2"	Threaded	Manual	Brass
EAC/R 100-140	M43061272	2 ½"	Threaded	Manual	Brass
EAC/R 160-180	43061274	3"	Flanges	Manual	Stainless steel axle and grey casting body

#### ▪ IN/OUT ISOLATING VALVES FOR EAC/R 009-140.

##### ○ Installation:

- Screw the double threaded male in the female threaded water outlet.
- Then screw the valve, the female thread, in the double threaded male as in the picture below.



- Then, weld a threaded male union (or a double threaded male and a female threaded union just like the connection done in the unit) and connect the water suction/discharge pipe to the valve. The valve keeps the pipe connection just like it was in the unit.

NOTE: In each of the treaded unions put Teflon to assure the isolation.

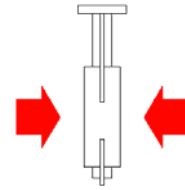
#### ▪ IN/OUT ISOLATING VALVES FOR EAC/R 160-180

##### ○ General characteristics:

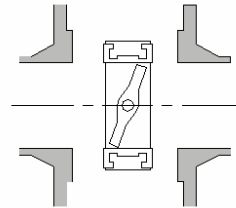
- Manual valve for 10 positions.
- Stainless steel axle and grey casting body GG-25 covered of Epoxi.
- Flanges installation DIN 2502. PN-16.
- Temperature range: -30 a 95 °C.

○ **Installation:**

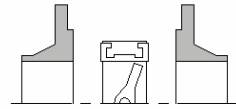
- Flow direction → bi-directional allowed.



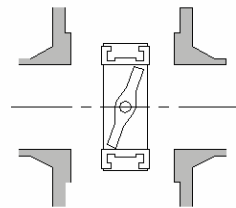
- Shaft position → valve shaft should be horizontal



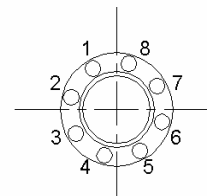
- Flange gaskets → no gaskets required.



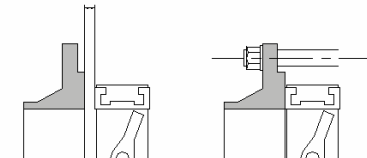
- Centring → installation in the centre of the pipe.



- Tightening of the bolts → criss-cross fashion.



- Tightening torque → until metal touches the flange face.



- Welding of flanges → avoid overheating of the valve lining.

